



SUBMITTAL SUMMARY REPORT 32641

PLAN NAME: MIDDLE SCHOOL 'DD'

LOCATION: 685 OAK RD
OCALA,

APPLICATION DATE: 03/20/2025

PARCEL: 37506-002-00

DESCRIPTION:

CONTACTS	NAME	COMPANY
Applicant	Joseph London	Kimley-Horn & Associates
Applicant	Kimley Horn	KIMLEY-HORN AND ASSOCIATES, INC
Applicant	Kimley Horn	KIMLEY-HORN AND ASSOCIATES, INC
Engineer of Record	Joseph London	Kimley-Horn & Associates
Engineer of Record	Kimley Horn	KIMLEY-HORN AND ASSOCIATES, INC
Engineer of Record	Kimley Horn	KIMLEY-HORN AND ASSOCIATES, INC

SUBMITTAL	STARTED	DUE	COMPLETE	STATUS
OCE: Plan Review (DR) v.5	05/20/2026	05/28/2026	05/22/2026	Approved
OCE: Plan Review (DR) v.4	05/05/2026	05/12/2026	05/18/2026	Requires Re-submit
OCE: Plan Review (DR) v.3	03/27/2026	04/06/2026	04/21/2026	Requires Re-submit
OCE: Plan Review (DR) v.2	01/16/2026	01/26/2026	03/03/2026	Requires Re-submit
OCE: Plan Review (DR) v.1	03/24/2025	04/07/2025	11/24/2025	Requires Re-submit

SUBMITTAL DETAILS

OCE: Plan Review (DR) v.5

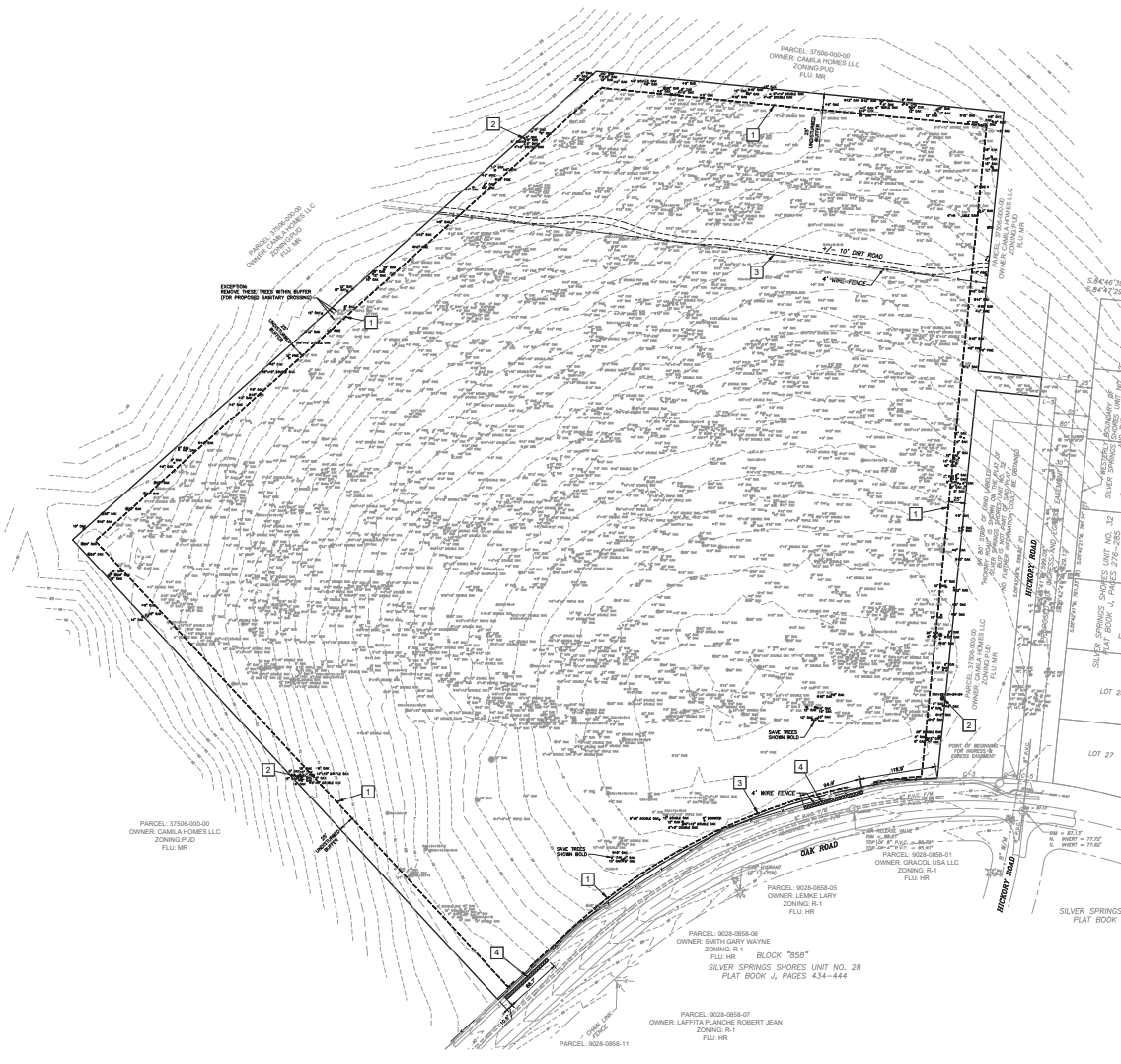
SUBMITTAL SUMMARY REPORT (32641)

ITEM REVIEW NAME (DEPARTMENT)	ASSIGNED TO	DUE	COMPLETE	STATUS
OCE Property Management (Plans) (Office of the County Engineer)		05/28/2026	05/20/2026	Informational
<i>Comments</i>				
<p>Owners Certification Up to Date/Valid. Per Property Manager - no further action needed to verify Owners Certification.</p> <p>IF APPLICABLE:</p> <p>Sec. 2.18.1.I - Show connections to other phases.</p> <p>Sec.2.19.2.H – Legal Documents</p> <p>Legal documents such as Declaration of Covenants and Restrictions, By-Laws, Articles of Incorporation, ordinances, resolutions, etc.</p> <p>Sec. 6.3.1.B.1 – Required Right of Way Dedication (select as appropriate)</p> <p>For Public Streets. "[All streets and rights-of-way shown on this plat or name specifically if less than all] are hereby dedicated for the use and benefit of the public."</p> <p>Sec. 6.3.1.B.2 – Required Right of Way Dedication</p> <p>For Non-Public Streets. "[All streets and rights-of-way shown on this plat or name specifically if less than all] are hereby dedicated privately to the [entity name]. All public authorities and their personnel providing services to the subdivision are granted an easement for access. The Board of County Commissioners of Marion County, Florida, shall have no responsibility, duty, or liability whatsoever regarding such streets. Marion County is granted an easement for emergency maintenance in the event of a local, state, or federal state of emergency wherein the declaration includes this subdivision or an emergency wherein the health, safety, or welfare of the public is deemed to be at risk."</p> <p>Sec. 6.3.1.D.3 - Cross Access Easements</p> <p>For Cross Access Easements. "All parallel access easements shown on this plat are hereby dedicated for the use and benefit of the public, and maintenance of said easements is the responsibility of [entity name]."</p> <p>Sec. 6.3.1.C.1 - Utility Easements (select as appropriate)</p> <p>"[All utility easements shown or noted or name specifically if less than all] are dedicated [private or to the public] for the construction, installation, maintenance, and operation of utilities by any utility provider."</p> <p>Sec. 6.3.1.C.2 – Utility Easements</p> <p>"[All utility tracts or identify each tract as appropriate] as shown are dedicated [private or to the public] for the construction and maintenance of such facilities."</p> <p>Sec.6.3.1.D(c)(1)(2)(3) - Stormwater easements and facilities, select as appropriate:</p> <p>1. "[All stormwater and drainage easements as shown or noted or name specifically if less than all] are dedicated [private or to the public] for the construction and maintenance of such facilities."</p> <p>2. "[All stormwater management tracts or identify each tract as appropriate] as shown are dedicated [private or to the public] for the construction and maintenance of such facilities."</p> <p>3. When any stormwater easement and/or management tract is not dedicated to the public or Marion County directly, the following statement shall be added to the dedication language: "Marion County is granted the right to perform emergency maintenance on the [stormwater easement and/or management tract, complete accordingly] in the event of a local, state, or federal state of emergency wherein the declaration includes this subdivision or an emergency wherein the health, safety, or welfare of the public is deemed to be at risk."</p> <p>Sec.6.3.1.D(f) –</p> <p>If a Conservation Easement is required the following shall be provided: "A conservation easement [as shown or on tract and identify the tract, complete accordingly] is dedicated to [the Board of County Commissioners of Marion County, Florida or entity name, if not Marion County] for the purpose of preservation of [listed species, habitat, Karst feature and/or native vegetation, complete accordingly]."</p> <p>DR 5/20/26</p>				

OCE: Plan Review (DR) v.4				
ITEM REVIEW NAME (DEPARTMENT)	ASSIGNED TO	DUE	COMPLETE	STATUS
911 Management (DR) (911 Management)	Janet Warbach	05/12/2026	05/07/2026	Approved
Environmental Health (Plans) (Environmental Health)	Evan Searcy	05/12/2026	05/18/2026	Approved
<i>Comments</i>				
Kitchen will need to be permitted through the Department of Health in Marion County. Please send a copy of the plans to Evan.Searcy@FLHealth.gov to ensure review is complete and approved. Group care inspection will also need to be done prior to opening.				
Fire Marshal (Plans) (Fire)	Jonathan Kenning	05/12/2026	05/05/2026	Approved
Growth Services Planning & Zoning (DR) (GS Planning and Zoning)	Xinyi Chen	05/12/2026	05/08/2026	Approved
Landscape (Plans) (Parks and Recreation)	Susan Heyen	05/12/2026	05/11/2026	Approved
OCE Design (Plans) (Office of the County Engineer)	Gerald Koch	05/12/2026	05/08/2026	Approved

SUBMITTAL SUMMARY REPORT (32641)

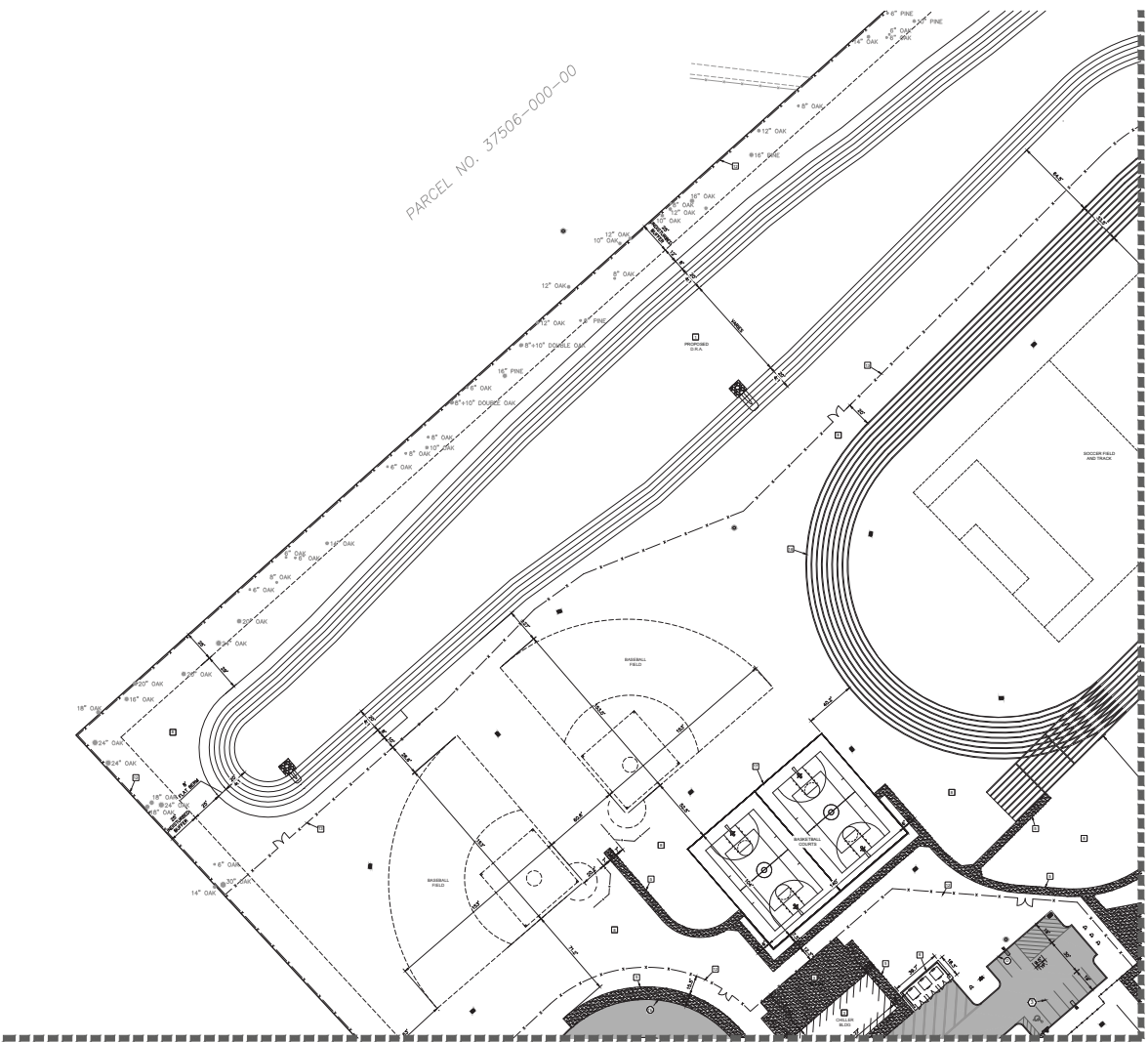
ITEM REVIEW NAME (DEPARTMENT)	ASSIGNED TO	DUE	COMPLETE	STATUS
OCE Property Management (Plans) (Office of the County Engineer)	Delenie Roman	05/12/2026	05/12/2026	Requires Re-submit
<i>Comments</i>	Road Project Map checked. Unable to locate on Sunbiz. Please update Owner's Certification or in the alternative, please ensure that signer's authority documents are uploaded at time of correction. IF APPLICABLE: Sec. 2.18.1.I - Show connections to other phases. Sec.2.19.2.H – Legal Documents Legal documents such as Declaration of Covenants and Restrictions, By-Laws, Articles of Incorporation, ordinances, resolutions, etc. Sec. 6.3.1.B.1 – Required Right of Way Dedication (select as appropriate) For Public Streets. "[All streets and rights-of-way shown on this plat or name specifically if less than all] are hereby dedicated for the use and benefit of the public." Sec. 6.3.1.B.2 – Required Right of Way Dedication For Non-Public Streets. "[All streets and rights-of-way shown on this plat or name specifically if less than all] are hereby dedicated privately to the [entity name]. All public authorities and their personnel providing services to the subdivision are granted an easement for access. The Board of County Commissioners of Marion County, Florida, shall have no responsibility, duty, or liability whatsoever regarding such streets. Marion County is granted an easement for emergency maintenance in the event of a local, state, or federal state of emergency wherein the declaration includes this subdivision or an emergency wherein the health, safety, or welfare of the public is deemed to be at risk." Sec. 6.3.1.D.3 - Cross Access Easements For Cross Access Easements. "All parallel access easements shown on this plat are hereby dedicated for the use and benefit of the public, and maintenance of said easements is the responsibility of [entity name]." Sec. 6.3.1.C.1 - Utility Easements (select as appropriate) "[All utility easements shown or noted or name specifically if less than all] are dedicated [private or to the public] for the construction, installation, maintenance, and operation of utilities by any utility provider." Sec. 6.3.1.C.2 – Utility Easements "[All utility tracts or identify each tract as appropriate] as shown are dedicated [private or to the public] for the construction and maintenance of such facilities." Sec.6.3.1.D(c)(1)(2)(3) - Stormwater easements and facilities, select as appropriate: 1. "[All stormwater and drainage easements as shown or noted or name specifically if less than all] are dedicated [private or to the public] for the construction and maintenance of such facilities." 2. "[All stormwater management tracts or identify each tract as appropriate] as shown are dedicated [private or to the public] for the construction and maintenance of such facilities." 3. When any stormwater easement and/or management tract is not dedicated to the public or Marion County directly, the following statement shall be added to the dedication language: "Marion County is granted the right to perform emergency maintenance on the [stormwater easement and/or management tract, complete accordingly] in the event of a local, state, or federal state of emergency wherein the declaration includes this subdivision or an emergency wherein the health, safety, or welfare of the public is deemed to be at risk." Sec.6.3.1.D(f) – If a Conservation Easement is required the following shall be provided: "A conservation easement [as shown or on tract and identify the tract, complete accordingly] is dedicated to [the Board of County Commissioners of Marion County, Florida or entity name, if not Marion County] for the purpose of preservation of [listed species, habitat, Karst feature and/or native vegetation, complete accordingly]." ----- OCE Stormwater (Permits & Plans) (Office of the County Engineer) Kevin Vickers 05/12/2026 05/11/2026 Approved <i>Recommendations</i> Copy of District Permit (County Interest) - Please provide a copy of the District permit prior to construction. <i>Recommendations</i> 6.13.10.B <input type="checkbox"/> Copy of NPDES Permit or NOI - Please provide a copy of the NPDES permit or NOI prior to construction. <i>Recommendations</i> Additional Stormwater comments - If you have questions or would like to discuss the stormwater review comments, please contact Kevin Vickers, PE at 352-671-8695 or kevin.vickers@marionfl.org. OCE Survey (Plans) (Office of the County Engineer) Theresa Smail 05/12/2026 05/06/2026 Approved OCE Traffic (Permits & Plans) (Office of the County Engineer) Chris Zeigler 05/12/2026 05/11/2026 Approved Utilities (OCE Plans) (Utilities) Heather Proctor 05/12/2026 05/12/2026 Approved <i>Corrections</i> 6.14.2.C(2) - Industrial Pretreatment/FOG (Resolved) - Corrective Action: PRIOR TO PLAN APPROVAL: Engineer of record must submit signed and sealed grease trap calculations . Grease traps shall not exceed 1,250 gallons unless they are multi-chambered. Informational: All grease traps will be required to undergo a hydrostatic leak test. The hydrostatic test report must be submitted to Marion County Utilities by the Engineer of Record. Project close-out and utility clearances will not be completed until all required reports have been submitted for review. - 6.14.2.C(2) - Industrial Pretreatment/FOG: <i>Comments</i> Project to be served by Marion County Utilities for water and wastewater. MCU staff has approved the site plans. Marion County Utilities requires a pre-construction meeting to be held at least 48 hours prior to the start of any utility work. Please contact MCU's Development Review Officer Heather.Proctor@MarionFL.org or call (352) 438-2846 to schedule your pre-construction meeting. ----- ----- -----			



- DEMOLITION NOTES:**
- 1. ALL EXISTING STRUCTURES TO BE DEMOLISHED BY THE CONTRACTOR SHALL BE DEMOLISHED BY THE CONTRACTOR IN LOCAL AREAS.
 - 2. BEFORE THE DEMOLITION OF ANY STRUCTURE, THE CONTRACTOR SHALL OBTAIN ALL NECESSARY PERMITS AND APPROVALS FROM THE LOCAL AGENCIES AND ADEQUATE PROTECTION SHALL BE PROVIDED TO ALL ADJACENT PROPERTIES. THE CONTRACTOR SHALL BE RESPONSIBLE FOR THE PROTECTION OF ALL ADJACENT PROPERTIES AND SHALL CONTACT THE OWNER PRIOR TO THE START OF ANY WORK.
 - 3. THE CONTRACTOR SHALL BE RESPONSIBLE FOR THE PROTECTION OF ALL UTILITIES AND SHALL OBTAIN ALL NECESSARY PERMITS AND APPROVALS FROM THE LOCAL AGENCIES AND ADEQUATE PROTECTION SHALL BE PROVIDED TO ALL ADJACENT PROPERTIES. THE CONTRACTOR SHALL BE RESPONSIBLE FOR THE PROTECTION OF ALL ADJACENT PROPERTIES AND SHALL CONTACT THE OWNER PRIOR TO THE START OF ANY WORK.
 - 4. ALL EXISTING UTILITIES SHALL BE PROTECTED BY THE CONTRACTOR AND SHALL BE DEMOLISHED BY THE CONTRACTOR IN LOCAL AREAS.
 - 5. ALL EXISTING UTILITIES SHALL BE PROTECTED BY THE CONTRACTOR AND SHALL BE DEMOLISHED BY THE CONTRACTOR IN LOCAL AREAS.



PARCEL NO. 37506-000-00



SEE SHEET - C3.3

SEE SHEET - C3.2



- FINISH LEGEND**
- 1 FINISHED GUY PROGRAM
 - 2 UNFINISHED GUY PROGRAM
 - 3 UNFINISHED CONCRETE
 - 4 UNFINISHED CONCRETE
 - 5 UNFINISHED CONCRETE
- FINISH LEGEND**
- 1 FINISH GUY PROGRAM
 - 2 FINISH GUY PROGRAM
 - 3 FINISH GUY PROGRAM
 - 4 FINISH GUY PROGRAM
 - 5 FINISH GUY PROGRAM

- SIGN AND EQUIPMENT MARKING LEGEND**
- 1 SIGN AND EQUIPMENT MARKING
 - 2 SIGN AND EQUIPMENT MARKING
 - 3 SIGN AND EQUIPMENT MARKING
 - 4 SIGN AND EQUIPMENT MARKING
 - 5 SIGN AND EQUIPMENT MARKING

- KEYNOTE LEGEND**
- 1 KEYNOTE LEGEND
 - 2 KEYNOTE LEGEND
 - 3 KEYNOTE LEGEND
 - 4 KEYNOTE LEGEND
 - 5 KEYNOTE LEGEND
 - 6 KEYNOTE LEGEND
 - 7 KEYNOTE LEGEND
 - 8 KEYNOTE LEGEND
 - 9 KEYNOTE LEGEND
 - 10 KEYNOTE LEGEND
 - 11 KEYNOTE LEGEND
 - 12 KEYNOTE LEGEND
 - 13 KEYNOTE LEGEND
 - 14 KEYNOTE LEGEND
 - 15 KEYNOTE LEGEND
 - 16 KEYNOTE LEGEND
 - 17 KEYNOTE LEGEND
 - 18 KEYNOTE LEGEND
 - 19 KEYNOTE LEGEND
 - 20 KEYNOTE LEGEND

NOTES

1. ALL WORK AND MATERIALS SHALL COMPLY WITH ALL COUNTY REGULATIONS AND ORDINANCES AND ALL APPLICABLE CODES.

2. REFER TO CONSTRUCTION WITHIN ANY EXISTING PUBLIC RIGHT-OF-WAY FOR CONSTRUCTION OF PUBLIC UTILITIES AND RECORDS FROM THE AUTHORITY HAVING JURISDICTION.

3. CONSTRUCTION SHALL BE IN ACCORDANCE WITH THE ARCHITECTURAL PLANS AND EXISTING RECORDS OF THE PROJECT. THE ARCHITECT, ENGINEER, ARCHITECTURAL FIRM, AND ANY OTHER CONSULTANTS SHALL BE RESPONSIBLE FOR OBTAINING ALL NECESSARY PERMITS AND APPROVALS FROM THE APPROPRIATE AGENCIES.

4. THE ARCHITECT, ENGINEER, ARCHITECTURAL FIRM, AND ANY OTHER CONSULTANTS SHALL BE RESPONSIBLE FOR OBTAINING ALL NECESSARY PERMITS AND APPROVALS FROM THE APPROPRIATE AGENCIES.

5. THE ARCHITECT, ENGINEER, ARCHITECTURAL FIRM, AND ANY OTHER CONSULTANTS SHALL BE RESPONSIBLE FOR OBTAINING ALL NECESSARY PERMITS AND APPROVALS FROM THE APPROPRIATE AGENCIES.

6. THE ARCHITECT, ENGINEER, ARCHITECTURAL FIRM, AND ANY OTHER CONSULTANTS SHALL BE RESPONSIBLE FOR OBTAINING ALL NECESSARY PERMITS AND APPROVALS FROM THE APPROPRIATE AGENCIES.

7. THE ARCHITECT, ENGINEER, ARCHITECTURAL FIRM, AND ANY OTHER CONSULTANTS SHALL BE RESPONSIBLE FOR OBTAINING ALL NECESSARY PERMITS AND APPROVALS FROM THE APPROPRIATE AGENCIES.

8. THE ARCHITECT, ENGINEER, ARCHITECTURAL FIRM, AND ANY OTHER CONSULTANTS SHALL BE RESPONSIBLE FOR OBTAINING ALL NECESSARY PERMITS AND APPROVALS FROM THE APPROPRIATE AGENCIES.

9. THE ARCHITECT, ENGINEER, ARCHITECTURAL FIRM, AND ANY OTHER CONSULTANTS SHALL BE RESPONSIBLE FOR OBTAINING ALL NECESSARY PERMITS AND APPROVALS FROM THE APPROPRIATE AGENCIES.

10. THE ARCHITECT, ENGINEER, ARCHITECTURAL FIRM, AND ANY OTHER CONSULTANTS SHALL BE RESPONSIBLE FOR OBTAINING ALL NECESSARY PERMITS AND APPROVALS FROM THE APPROPRIATE AGENCIES.

11. THE ARCHITECT, ENGINEER, ARCHITECTURAL FIRM, AND ANY OTHER CONSULTANTS SHALL BE RESPONSIBLE FOR OBTAINING ALL NECESSARY PERMITS AND APPROVALS FROM THE APPROPRIATE AGENCIES.

12. THE ARCHITECT, ENGINEER, ARCHITECTURAL FIRM, AND ANY OTHER CONSULTANTS SHALL BE RESPONSIBLE FOR OBTAINING ALL NECESSARY PERMITS AND APPROVALS FROM THE APPROPRIATE AGENCIES.

13. THE ARCHITECT, ENGINEER, ARCHITECTURAL FIRM, AND ANY OTHER CONSULTANTS SHALL BE RESPONSIBLE FOR OBTAINING ALL NECESSARY PERMITS AND APPROVALS FROM THE APPROPRIATE AGENCIES.

14. THE ARCHITECT, ENGINEER, ARCHITECTURAL FIRM, AND ANY OTHER CONSULTANTS SHALL BE RESPONSIBLE FOR OBTAINING ALL NECESSARY PERMITS AND APPROVALS FROM THE APPROPRIATE AGENCIES.

15. THE ARCHITECT, ENGINEER, ARCHITECTURAL FIRM, AND ANY OTHER CONSULTANTS SHALL BE RESPONSIBLE FOR OBTAINING ALL NECESSARY PERMITS AND APPROVALS FROM THE APPROPRIATE AGENCIES.

16. THE ARCHITECT, ENGINEER, ARCHITECTURAL FIRM, AND ANY OTHER CONSULTANTS SHALL BE RESPONSIBLE FOR OBTAINING ALL NECESSARY PERMITS AND APPROVALS FROM THE APPROPRIATE AGENCIES.

17. THE ARCHITECT, ENGINEER, ARCHITECTURAL FIRM, AND ANY OTHER CONSULTANTS SHALL BE RESPONSIBLE FOR OBTAINING ALL NECESSARY PERMITS AND APPROVALS FROM THE APPROPRIATE AGENCIES.

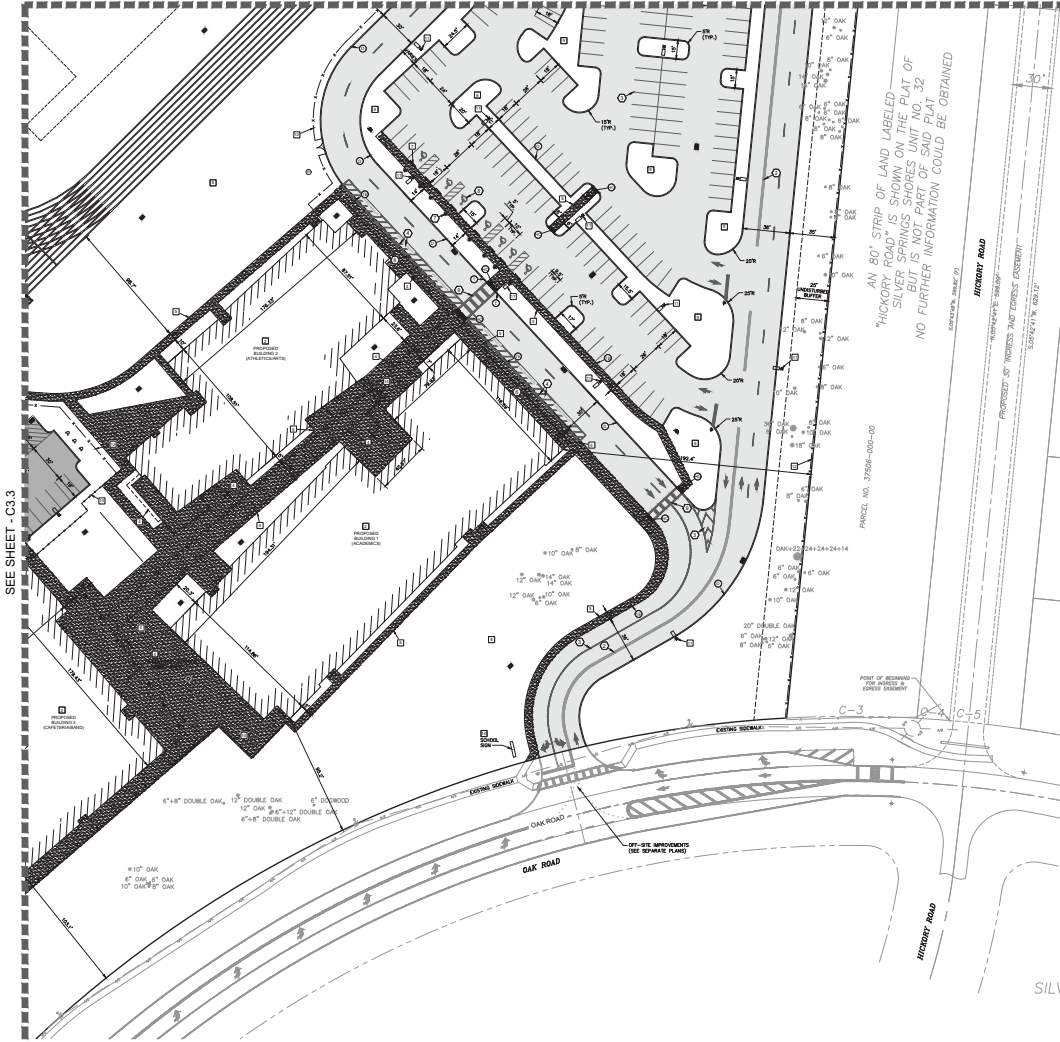
18. THE ARCHITECT, ENGINEER, ARCHITECTURAL FIRM, AND ANY OTHER CONSULTANTS SHALL BE RESPONSIBLE FOR OBTAINING ALL NECESSARY PERMITS AND APPROVALS FROM THE APPROPRIATE AGENCIES.

19. THE ARCHITECT, ENGINEER, ARCHITECTURAL FIRM, AND ANY OTHER CONSULTANTS SHALL BE RESPONSIBLE FOR OBTAINING ALL NECESSARY PERMITS AND APPROVALS FROM THE APPROPRIATE AGENCIES.

20. THE ARCHITECT, ENGINEER, ARCHITECTURAL FIRM, AND ANY OTHER CONSULTANTS SHALL BE RESPONSIBLE FOR OBTAINING ALL NECESSARY PERMITS AND APPROVALS FROM THE APPROPRIATE AGENCIES.



SEE SHEET - C3.2



SEE SHEET - C3.3

AN 80' STRIP OF LAND LABELED "HICKORY ROAD" IS SHOWN ON THE PLAT OF SILVER SPRINGS SHORES UNIT 32 BUT IS NOT PART OF SAID PLAT. NO FURTHER INFORMATION COULD BE OBTAINED.



- PAVEMENT LEGEND**
- ASPHALT DRIVEWAY PAVEMENT (SEE DETAIL C-1)
 - ASPHALT DRIVEWAY PAVEMENT (SEE DETAIL C-2)
 - ASPHALT DRIVEWAY PAVEMENT (SEE DETAIL C-3)
 - CONCRETE DRIVEWAY PAVEMENT (SEE DETAIL C-4)
 - CONCRETE DRIVEWAY PAVEMENT (SEE DETAIL C-5)

- CLUB LEGEND**
- SEE SHEET C-3 FOR DETAILS
 - TYPE OF CLUB
 - CLUB (INDICATE IN LAYOUT)
 - THICKNESS OF CLUB
 - CLUB (INDICATE IN LAYOUT)
 - CLUB (INDICATE IN LAYOUT)

- ROAD AND PAVEMENT MARKING LEGEND**
- SEE SHEET C-3 FOR DETAILS
 - SEE SHEET C-3 FOR DETAILS
 - SEE SHEET C-3 FOR DETAILS
 - SEE SHEET C-3 FOR DETAILS
 - SEE SHEET C-3 FOR DETAILS

- IRRI-GATE LEGEND**
- SEE SHEET C-3 FOR DETAILS
 - SEE SHEET C-3 FOR DETAILS
 - SEE SHEET C-3 FOR DETAILS
 - SEE SHEET C-3 FOR DETAILS
 - SEE SHEET C-3 FOR DETAILS

- IRRI-GATE LEGEND**
- SEE SHEET C-3 FOR DETAILS
 - SEE SHEET C-3 FOR DETAILS
 - SEE SHEET C-3 FOR DETAILS
 - SEE SHEET C-3 FOR DETAILS
 - SEE SHEET C-3 FOR DETAILS

- IRRI-GATE LEGEND**
- SEE SHEET C-3 FOR DETAILS
 - SEE SHEET C-3 FOR DETAILS
 - SEE SHEET C-3 FOR DETAILS
 - SEE SHEET C-3 FOR DETAILS
 - SEE SHEET C-3 FOR DETAILS

- IRRI-GATE LEGEND**
- SEE SHEET C-3 FOR DETAILS
 - SEE SHEET C-3 FOR DETAILS
 - SEE SHEET C-3 FOR DETAILS
 - SEE SHEET C-3 FOR DETAILS
 - SEE SHEET C-3 FOR DETAILS

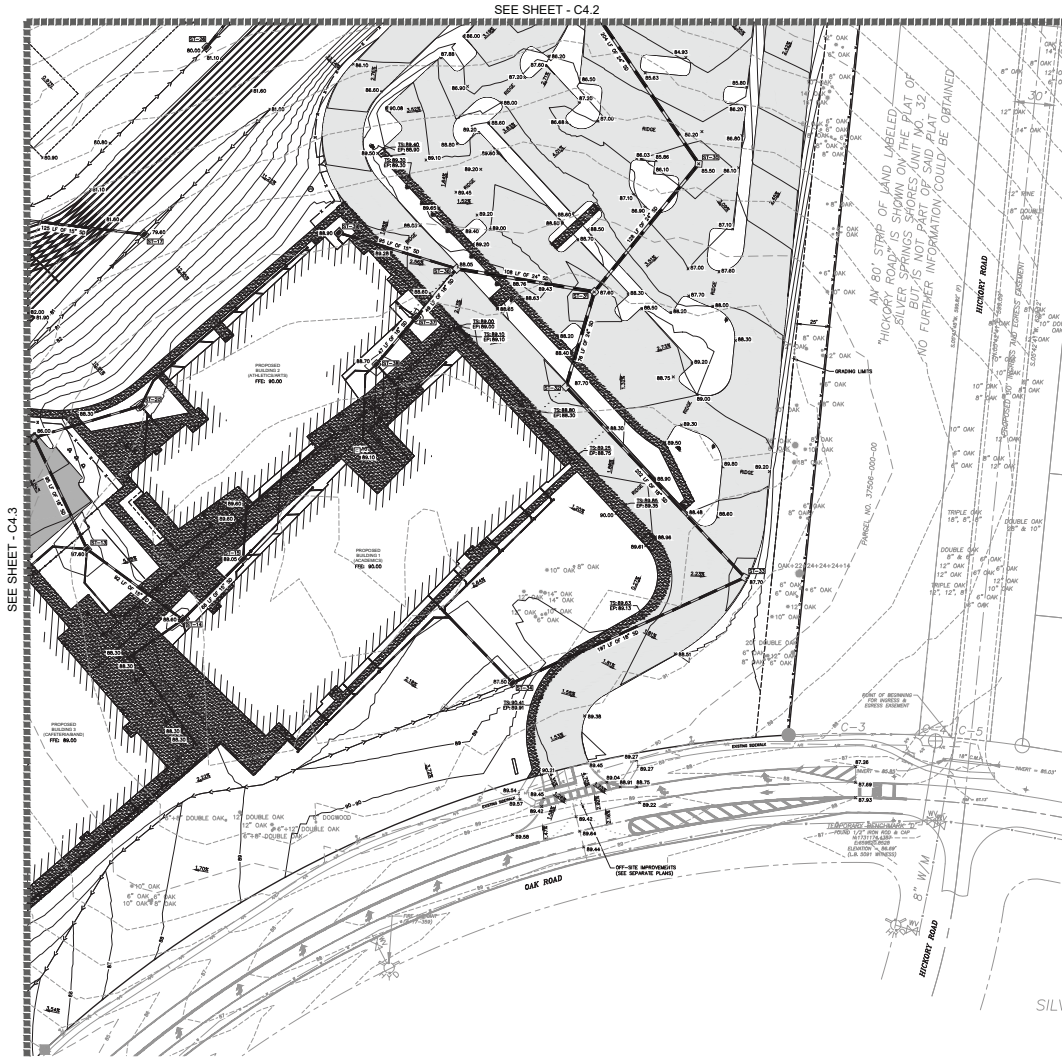
- IRRI-GATE LEGEND**
- SEE SHEET C-3 FOR DETAILS
 - SEE SHEET C-3 FOR DETAILS
 - SEE SHEET C-3 FOR DETAILS
 - SEE SHEET C-3 FOR DETAILS
 - SEE SHEET C-3 FOR DETAILS

- IRRI-GATE LEGEND**
- SEE SHEET C-3 FOR DETAILS
 - SEE SHEET C-3 FOR DETAILS
 - SEE SHEET C-3 FOR DETAILS
 - SEE SHEET C-3 FOR DETAILS
 - SEE SHEET C-3 FOR DETAILS

- IRRI-GATE LEGEND**
- SEE SHEET C-3 FOR DETAILS
 - SEE SHEET C-3 FOR DETAILS
 - SEE SHEET C-3 FOR DETAILS
 - SEE SHEET C-3 FOR DETAILS
 - SEE SHEET C-3 FOR DETAILS

- IRRI-GATE LEGEND**
- SEE SHEET C-3 FOR DETAILS
 - SEE SHEET C-3 FOR DETAILS
 - SEE SHEET C-3 FOR DETAILS
 - SEE SHEET C-3 FOR DETAILS
 - SEE SHEET C-3 FOR DETAILS





SEE SHEET - C4.2

SEE SHEET - C4.3

AN 80' STRIP OF LAND LABELED "HICKORY ROAD" IS SHOWN ON THE PLAT OF "SILVER SPRINGS SHOES UNIT #32" BUT IS PART OF SAID PLAT #32. NO FURTHER INFORMATION COULD BE OBTAINED.



- NOTES:**
- VERTICAL CURVES BASED ON CITY OF OCALA ENGINEERING DEPARTMENT (EPD) CONTROL POINT RISE WITH AN APPROXIMATE 10' HIGHER THAN INDICATED.
 - ALL GRADES ARE TO THE INSIDE OF PAVEMENT UNLESS OTHERWISE INDICATED.
 - MINIMUM FINISHING SLOPE FOR SIDEWALKS SHALL NOT BE LESS THAN 1.0%.
 - MINIMUM FINISHING SLOPE FOR DRIVEWAYS SHALL NOT BE LESS THAN 1.0%.
 - MINIMUM SLOPE IN ACCESSIBLE PARKING AREAS SHALL NOT BE LESS THAN 1.0% IN ANY DIRECTION.
 - STORM PIPE MATERIAL SHALL BE 15" DIA. 12" DEPTH 15" STORM PIPE WITH 12" DIA. 12" DEPTH 15" STORM PIPE CONNECTIONS TO EXISTING STORM PIPES AND CONNECTIONS TO EXISTING STORM PIPES TO EXISTING STORM PIPES SHALL BE 15" DIA. 12" DEPTH 15" STORM PIPE.
 - ALL PAVEMENT DRIVEWAYS SHALL BE APPROVED BY THE ENGINEER OF RECORD AND NOTED ON THE PROJECT DRAWINGS.
 - DISCHARGE INTO DRAINAGE AREAS INCLUDES INSTALLATION OF CONCRETE RETENTION WALL SECTION WITH 10' HIGH WALL AND 10' DEPTH. SEE SHEET C-4.3 FOR SECTION OF RETENTION WALL.
 - SEE SHEET C-4.3 FOR SPECIFIC FLOOD INFORMATION.
 - ALL AREAS DELIMITED BY THE CONSTRUCTION OF THIS PROJECT ARE NOT TO BE MAINTAINED PERMANENTLY FOR PARKING OR STORAGE OF VEHICLES OR EQUIPMENT. ALL AREAS SHALL BE RESTORED TO ORIGINAL GRADE AND CONDITION. SEE SHEET C-4.3 FOR SECTION OF RETENTION WALL.
 - ROOF DRAINS SHALL BE HEAVY DUTY P.C. INSTALLED AT 1.0% MINIMUM SLOPE.

STORM SEWER DATA					
STRUCTURE	TYPE	TOP EL.	INVT. EL.	PIPES OUT	PIPE SIZE / SLOPE
S1-12	INLET	86.00	86.00	S1-12 TO S1-11	24" SD 0.50%
S1-13	INLET	87.00	87.00	S1-13 TO S1-15	24" SD 0.50%
S1-14	INLET	88.00	88.00	S1-14 TO S1-13	18" SD 0.50%
S1-15	INLET	89.00	89.00	S1-15 TO S1-14	18" SD 0.50%
S1-17	INLET	78.00	78.00	S1-17 TO S1-16	18" SD 12.00%
S1-20	INLET	87.00	87.00	S1-20 TO S1-19	18" SD 0.50%
S1-26	INLET	86.00	86.00	S1-26 TO S1-25	18" SD 12.00%
S1-31	INLET	86.00	86.00	S1-31 TO S1-24	24" SD 20.00%
S1-32	INLET	87.00	87.00	S1-32 TO S1-30	24" SD 12.00%
S1-33	INLET	87.00	87.00	S1-33 TO S1-33	18" SD 20.00%
S1-34	INLET	87.00	87.00	S1-34 TO S1-33	18" SD 10.00%
S1-36	INLET	86.00	86.00	S1-36 TO S1-35	24" SD 10.00%
S1-37	INLET	86.00	86.00	S1-37 TO S1-36	18" SD 4.00%
S1-38	INLET	86.00	86.00	S1-38 TO S1-37	18" SD 4.00%
S1-39	INLET	86.00	86.00	S1-39 TO S1-38	18" SD 0.50%

TRENCH DRAIN QUANTITY LIST				
LOCATION	REMARKS	TOTAL LENGTH	CLOSED	OPEN
1	W/S	87'	87.00	0.00
2	W/S	87'	87.00	0.00
3	W/S	87'	87.00	0.00
4	W/S	87'	87.00	0.00
5	W/S	87'	87.00	0.00

HARVARD • JOLLY P&E

10155 ORANGE AVENUE, SUITE 100, Ocala, FL 34472 | 352.207.7222 | www.harvardjolly.com | PA010146

MARION COUNTY PUBLIC SCHOOLS
MIDDLE SCHOOL DD
685 OAK ROAD
OCALA, FL 34472
80% CONSTRUCTION DOCUMENTS
MAJOR SITE PLAN

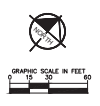
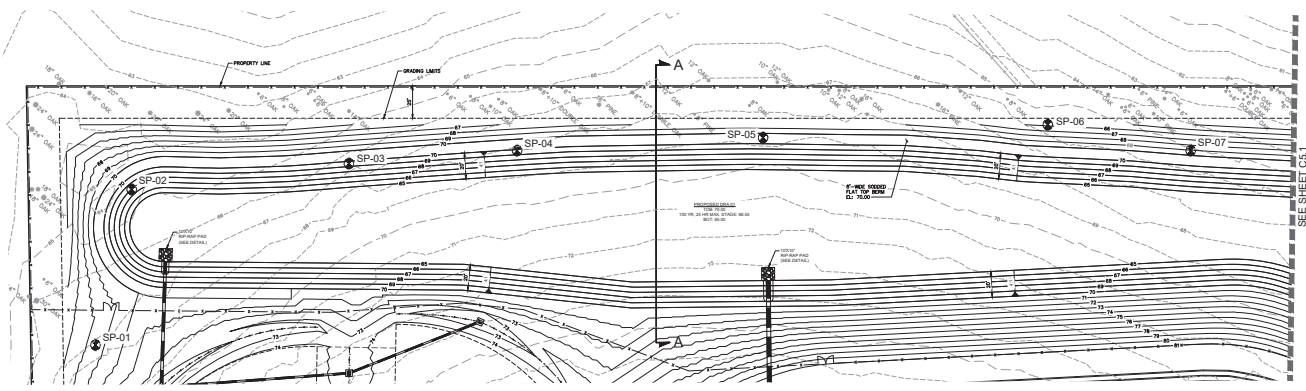
Drawn by: TEJ
Checked by: JMF

Date: December 2023

NAME, LIC # & DATE:
3/20/2023

PAVING GRADING AND DRAINAGE PLAN

C4.4



SEE SHEET C5.1

Log of Borehole SP-01

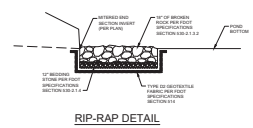
Depth (ft)	Soil Description	Remarks
0.0 - 0.5
0.5 - 1.0
1.0 - 1.5
1.5 - 2.0
2.0 - 2.5
2.5 - 3.0
3.0 - 3.5
3.5 - 4.0
4.0 - 4.5
4.5 - 5.0
5.0 - 5.5
5.5 - 6.0
6.0 - 6.5
6.5 - 7.0
7.0 - 7.5
7.5 - 8.0
8.0 - 8.5
8.5 - 9.0
9.0 - 9.5
9.5 - 10.0

Log of Borehole SP-02

Depth (ft)	Soil Description	Remarks
0.0 - 0.5
0.5 - 1.0
1.0 - 1.5
1.5 - 2.0
2.0 - 2.5
2.5 - 3.0
3.0 - 3.5
3.5 - 4.0
4.0 - 4.5
4.5 - 5.0
5.0 - 5.5
5.5 - 6.0
6.0 - 6.5
6.5 - 7.0
7.0 - 7.5
7.5 - 8.0
8.0 - 8.5
8.5 - 9.0
9.0 - 9.5
9.5 - 10.0

Log of Borehole SP-03

Depth (ft)	Soil Description	Remarks
0.0 - 0.5
0.5 - 1.0
1.0 - 1.5
1.5 - 2.0
2.0 - 2.5
2.5 - 3.0
3.0 - 3.5
3.5 - 4.0
4.0 - 4.5
4.5 - 5.0
5.0 - 5.5
5.5 - 6.0
6.0 - 6.5
6.5 - 7.0
7.0 - 7.5
7.5 - 8.0
8.0 - 8.5
8.5 - 9.0
9.0 - 9.5
9.5 - 10.0



- NOTES:**
1. DIMENSIONS BETWEEN PILES AND SPACING ARE TO BE MAINTAINED TO WITHIN 1/8" TOLERANCE. THE PILES WILL BE SET TO THE CENTERLINE OF THE POND AS SHOWN ON THE POND DETAIL DRAWING.
 2. ALL PILES SHALL BE SET TO THE CENTERLINE OF THE POND AS SHOWN ON THE POND DETAIL DRAWING.
 3. ALL PILES SHALL BE SET TO THE CENTERLINE OF THE POND AS SHOWN ON THE POND DETAIL DRAWING.
 4. ALL PILES SHALL BE SET TO THE CENTERLINE OF THE POND AS SHOWN ON THE POND DETAIL DRAWING.
 5. ALL PILES SHALL BE SET TO THE CENTERLINE OF THE POND AS SHOWN ON THE POND DETAIL DRAWING.
 6. ALL PILES SHALL BE SET TO THE CENTERLINE OF THE POND AS SHOWN ON THE POND DETAIL DRAWING.
 7. ALL PILES SHALL BE SET TO THE CENTERLINE OF THE POND AS SHOWN ON THE POND DETAIL DRAWING.
 8. ALL PILES SHALL BE SET TO THE CENTERLINE OF THE POND AS SHOWN ON THE POND DETAIL DRAWING.
 9. ALL PILES SHALL BE SET TO THE CENTERLINE OF THE POND AS SHOWN ON THE POND DETAIL DRAWING.
 10. ALL PILES SHALL BE SET TO THE CENTERLINE OF THE POND AS SHOWN ON THE POND DETAIL DRAWING.

Log of Borehole SP-04

Depth (ft)	Soil Description	Remarks
0.0 - 0.5
0.5 - 1.0
1.0 - 1.5
1.5 - 2.0
2.0 - 2.5
2.5 - 3.0
3.0 - 3.5
3.5 - 4.0
4.0 - 4.5
4.5 - 5.0
5.0 - 5.5
5.5 - 6.0
6.0 - 6.5
6.5 - 7.0
7.0 - 7.5
7.5 - 8.0
8.0 - 8.5
8.5 - 9.0
9.0 - 9.5
9.5 - 10.0

Log of Borehole SP-05

Depth (ft)	Soil Description	Remarks
0.0 - 0.5
0.5 - 1.0
1.0 - 1.5
1.5 - 2.0
2.0 - 2.5
2.5 - 3.0
3.0 - 3.5
3.5 - 4.0
4.0 - 4.5
4.5 - 5.0
5.0 - 5.5
5.5 - 6.0
6.0 - 6.5
6.5 - 7.0
7.0 - 7.5
7.5 - 8.0
8.0 - 8.5
8.5 - 9.0
9.0 - 9.5
9.5 - 10.0

Log of Borehole SP-06

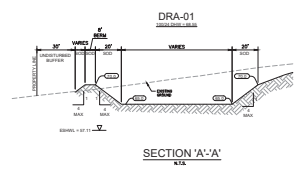
Depth (ft)	Soil Description	Remarks
0.0 - 0.5
0.5 - 1.0
1.0 - 1.5
1.5 - 2.0
2.0 - 2.5
2.5 - 3.0
3.0 - 3.5
3.5 - 4.0
4.0 - 4.5
4.5 - 5.0
5.0 - 5.5
5.5 - 6.0
6.0 - 6.5
6.5 - 7.0
7.0 - 7.5
7.5 - 8.0
8.0 - 8.5
8.5 - 9.0
9.0 - 9.5
9.5 - 10.0

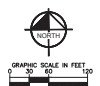
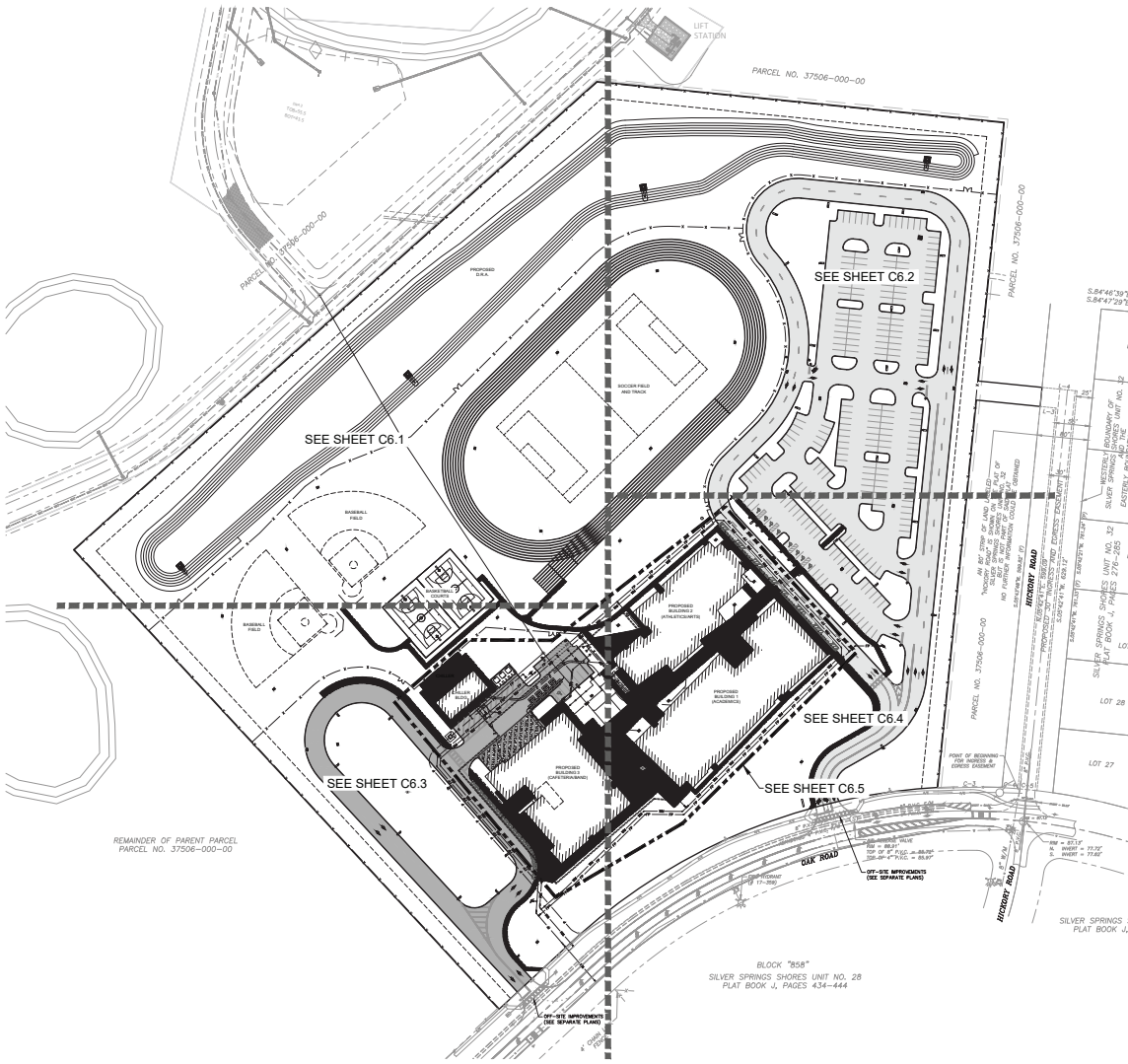
Log of Borehole SP-07

Depth (ft)	Soil Description	Remarks
0.0 - 0.5
0.5 - 1.0
1.0 - 1.5
1.5 - 2.0
2.0 - 2.5
2.5 - 3.0
3.0 - 3.5
3.5 - 4.0
4.0 - 4.5
4.5 - 5.0
5.0 - 5.5
5.5 - 6.0
6.0 - 6.5
6.5 - 7.0
7.0 - 7.5
7.5 - 8.0
8.0 - 8.5
8.5 - 9.0
9.0 - 9.5
9.5 - 10.0

DRA-01 STAGE STORAGE

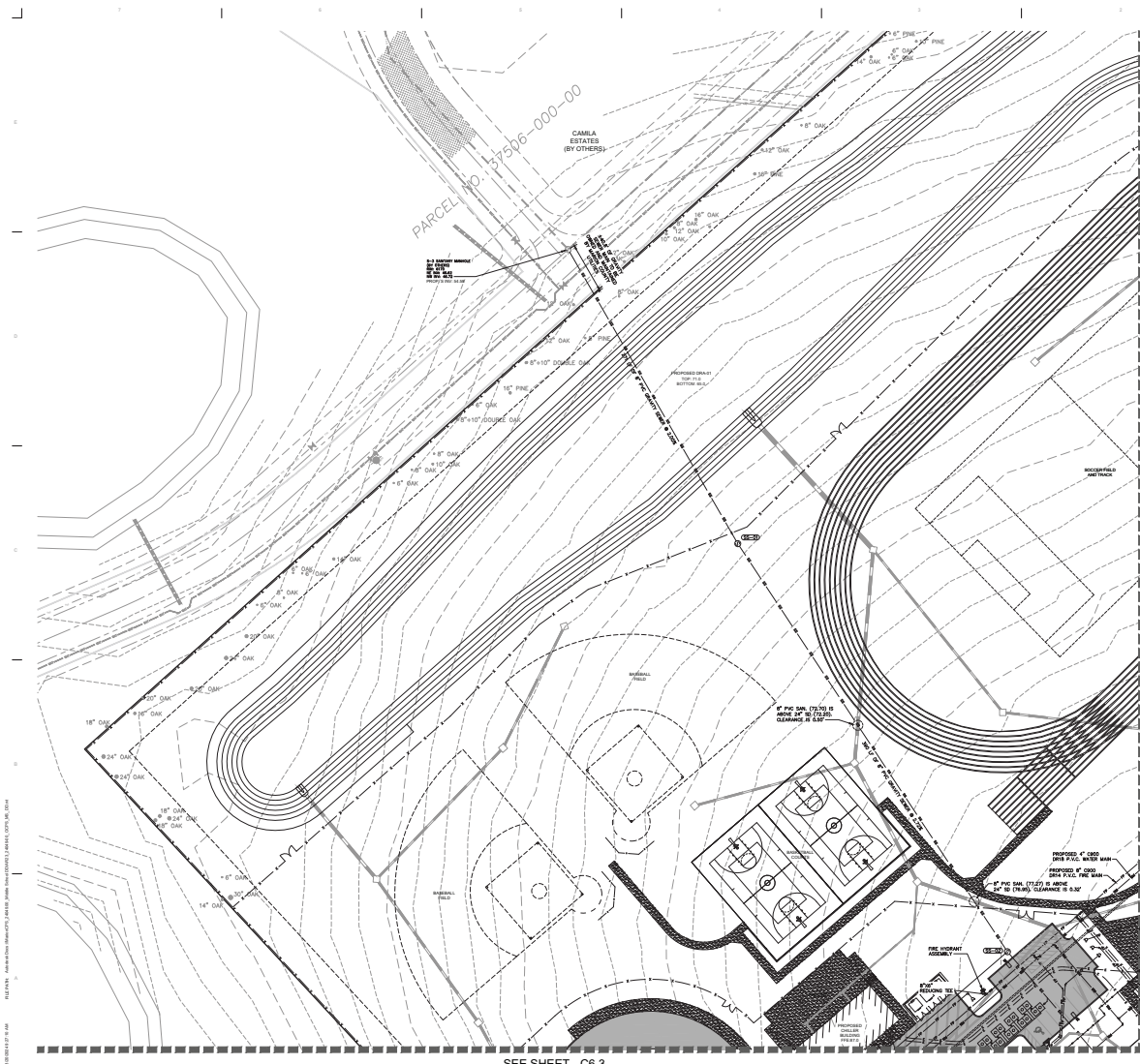
Pond Bottom	Flow (cfs)	Stage (ft)	Volume (cu ft)
66.00	1.00	0.00	0.00
66.00	10.00	2.00	1.00
67.00	100.00	2.50	4.10
68.00	1000.00	3.00	6.97
69.00	10000.00	3.50	9.93
70.00	100000.00	4.00	12.98
71.00	1000000.00	4.50	16.12





- LEGEND**
- PROPOSED BOUNDARY MARKERS
 - PROPOSED BOUNDARY STRUCTURE WALLS
 - PROPOSED BOUNDARY SEWER PIPE
 - PROPOSED BOUNDARY WATER PIPE
 - PROPOSED FENCE MARK
 - PROPOSED FIRE PROTECTION LINE
 - PROPOSED ELECTRIC PROTECTION CONDUIT
 - PROPOSED ELECTRIC CONDUIT
 - PROPOSED CABLE TELEVISION
 - PROPOSED TELEPHONE
 - PROPOSED DOUBLE CHECK DETECTOR
 - PROPOSED PRESSURE SENSITIVE DETECTOR
 - PROPOSED WATER MAIN
 - PROPOSED GAS MAIN
 - PROPOSED AIR CONDITIONING (EXCEPT BY OTHERS)
 - PROPOSED AIR CONDITIONING (EXCEPT BY OTHERS)
 - PROPOSED AIR CONDITIONING (EXCEPT BY OTHERS)
 - PROPOSED AIR CONDITIONING (EXCEPT BY OTHERS)

- NOTES**
1. QUALITY CONSTRUCTION SHALL CONFORM WITH THE BARRON COUNTY SPECIFICATIONS FOR CONSTRUCTION OF ALL BUILDINGS. THE CONTRACTOR IS RESPONSIBLE FOR OBTAINING ALL NECESSARY PERMITS AND APPROVALS FROM THE CITY OF SILVER SPRING.
 2. THE CONTRACTOR SHALL BE RESPONSIBLE FOR THE PROPER INSTALLATION OF ALL STRUCTURAL MEMBERS AND CONNECTIONS.
 3. FOR ALL UTILITY DEVIATIONS FROM THE BARRON COUNTY SPECIFICATIONS, THE CONTRACTOR SHALL SUBMIT A UTILITY DEVIATION REQUEST TO THE CITY OF SILVER SPRING FOR APPROVAL. ALL UTILITY DEVIATIONS SHALL BE IN ACCORDANCE WITH THE CITY OF SILVER SPRING SPECIFICATIONS.
 4. ALL STRUCTURAL MEMBERS SHALL BE PROTECTED AGAINST COLLISION BY ALL OTHER UTILITIES. THE CONTRACTOR SHALL BE RESPONSIBLE FOR OBTAINING ALL NECESSARY PERMITS AND APPROVALS FROM THE CITY OF SILVER SPRING.
 5. ALL UTILITIES SHALL BE PROTECTED BY A MINIMUM OF 18" OF GRANULAR FILL. ALL UTILITIES SHALL BE PROTECTED BY A MINIMUM OF 18" OF GRANULAR FILL.
 6. ALL UTILITIES SHALL BE PROTECTED BY A MINIMUM OF 18" OF GRANULAR FILL. ALL UTILITIES SHALL BE PROTECTED BY A MINIMUM OF 18" OF GRANULAR FILL.
 7. ALL UTILITIES SHALL BE PROTECTED BY A MINIMUM OF 18" OF GRANULAR FILL. ALL UTILITIES SHALL BE PROTECTED BY A MINIMUM OF 18" OF GRANULAR FILL.
 8. ALL UTILITIES SHALL BE PROTECTED BY A MINIMUM OF 18" OF GRANULAR FILL. ALL UTILITIES SHALL BE PROTECTED BY A MINIMUM OF 18" OF GRANULAR FILL.
 9. ALL UTILITIES SHALL BE PROTECTED BY A MINIMUM OF 18" OF GRANULAR FILL. ALL UTILITIES SHALL BE PROTECTED BY A MINIMUM OF 18" OF GRANULAR FILL.
 10. ALL UTILITIES SHALL BE PROTECTED BY A MINIMUM OF 18" OF GRANULAR FILL. ALL UTILITIES SHALL BE PROTECTED BY A MINIMUM OF 18" OF GRANULAR FILL.
 11. ALL UTILITIES SHALL BE PROTECTED BY A MINIMUM OF 18" OF GRANULAR FILL. ALL UTILITIES SHALL BE PROTECTED BY A MINIMUM OF 18" OF GRANULAR FILL.
 12. ALL UTILITIES SHALL BE PROTECTED BY A MINIMUM OF 18" OF GRANULAR FILL. ALL UTILITIES SHALL BE PROTECTED BY A MINIMUM OF 18" OF GRANULAR FILL.
 13. ALL UTILITIES SHALL BE PROTECTED BY A MINIMUM OF 18" OF GRANULAR FILL. ALL UTILITIES SHALL BE PROTECTED BY A MINIMUM OF 18" OF GRANULAR FILL.
 14. ALL UTILITIES SHALL BE PROTECTED BY A MINIMUM OF 18" OF GRANULAR FILL. ALL UTILITIES SHALL BE PROTECTED BY A MINIMUM OF 18" OF GRANULAR FILL.
 15. ALL UTILITIES SHALL BE PROTECTED BY A MINIMUM OF 18" OF GRANULAR FILL. ALL UTILITIES SHALL BE PROTECTED BY A MINIMUM OF 18" OF GRANULAR FILL.
 16. ALL UTILITIES SHALL BE PROTECTED BY A MINIMUM OF 18" OF GRANULAR FILL. ALL UTILITIES SHALL BE PROTECTED BY A MINIMUM OF 18" OF GRANULAR FILL.
 17. ALL UTILITIES SHALL BE PROTECTED BY A MINIMUM OF 18" OF GRANULAR FILL. ALL UTILITIES SHALL BE PROTECTED BY A MINIMUM OF 18" OF GRANULAR FILL.
 18. ALL UTILITIES SHALL BE PROTECTED BY A MINIMUM OF 18" OF GRANULAR FILL. ALL UTILITIES SHALL BE PROTECTED BY A MINIMUM OF 18" OF GRANULAR FILL.
 19. ALL UTILITIES SHALL BE PROTECTED BY A MINIMUM OF 18" OF GRANULAR FILL. ALL UTILITIES SHALL BE PROTECTED BY A MINIMUM OF 18" OF GRANULAR FILL.
 20. ALL UTILITIES SHALL BE PROTECTED BY A MINIMUM OF 18" OF GRANULAR FILL. ALL UTILITIES SHALL BE PROTECTED BY A MINIMUM OF 18" OF GRANULAR FILL.



- LEGEND**
- PROPOSED SANITARY SEWER
 - PROPOSED SANITARY STRUCTURE LABEL
 - PROPOSED SANITARY SEWER PIPE
 - PROPOSED STORM WATER
 - PROPOSED WATER MAIN
 - PROPOSED GAS
 - PROPOSED ELECTRIC PRIMARY CONDUIT
 - PROPOSED ELECTRIC SECONDARY CONDUIT
 - PROPOSED ELECTRICAL PANEL
 - PROPOSED PRESSURE CHECK VALVE
 - PROPOSED PRESSURE BACKFLOW PREVENTER
 - PROPOSED WATER MAIN
 - ELECTRIC TRANSFORMER (SEEN BY OTHERS)
 - PROPOSED SANITARY SEWER (SEE SHEET C-1 THROUGH C-6 FOR DETAILS)

- NOTES**
1. ALL UTILITY CONSTRUCTION SHALL COMPLY WITH THE MARION COUNTY UTILITY CONSTRUCTION SPECIFICATIONS, LATEST EDITION. ALL CONSTRUCTION SHALL BE IN ACCORDANCE WITH THE MARION COUNTY UTILITY CONSTRUCTION SPECIFICATIONS, LATEST EDITION.
 2. ALL UTILITY CONSTRUCTION SHALL BE IN ACCORDANCE WITH THE MARION COUNTY UTILITY CONSTRUCTION SPECIFICATIONS, LATEST EDITION. ALL UTILITY CONSTRUCTION SHALL BE IN ACCORDANCE WITH THE MARION COUNTY UTILITY CONSTRUCTION SPECIFICATIONS, LATEST EDITION.
 3. FOR ALL UTILITY CONSTRUCTION, THE CONTRACTOR SHALL BE RESPONSIBLE FOR OBTAINING ALL NECESSARY PERMITS AND APPROVALS FROM THE APPROPRIATE AGENCIES. THE CONTRACTOR SHALL BE RESPONSIBLE FOR OBTAINING ALL NECESSARY PERMITS AND APPROVALS FROM THE APPROPRIATE AGENCIES.
 4. THE CONTRACTOR SHALL BE RESPONSIBLE FOR OBTAINING ALL NECESSARY PERMITS AND APPROVALS FROM THE APPROPRIATE AGENCIES. THE CONTRACTOR SHALL BE RESPONSIBLE FOR OBTAINING ALL NECESSARY PERMITS AND APPROVALS FROM THE APPROPRIATE AGENCIES.
 5. ALL UTILITY CONSTRUCTION SHALL BE IN ACCORDANCE WITH THE MARION COUNTY UTILITY CONSTRUCTION SPECIFICATIONS, LATEST EDITION. ALL UTILITY CONSTRUCTION SHALL BE IN ACCORDANCE WITH THE MARION COUNTY UTILITY CONSTRUCTION SPECIFICATIONS, LATEST EDITION.
 6. ALL UTILITY CONSTRUCTION SHALL BE IN ACCORDANCE WITH THE MARION COUNTY UTILITY CONSTRUCTION SPECIFICATIONS, LATEST EDITION. ALL UTILITY CONSTRUCTION SHALL BE IN ACCORDANCE WITH THE MARION COUNTY UTILITY CONSTRUCTION SPECIFICATIONS, LATEST EDITION.
 7. ALL UTILITY CONSTRUCTION SHALL BE IN ACCORDANCE WITH THE MARION COUNTY UTILITY CONSTRUCTION SPECIFICATIONS, LATEST EDITION. ALL UTILITY CONSTRUCTION SHALL BE IN ACCORDANCE WITH THE MARION COUNTY UTILITY CONSTRUCTION SPECIFICATIONS, LATEST EDITION.
 8. ALL UTILITY CONSTRUCTION SHALL BE IN ACCORDANCE WITH THE MARION COUNTY UTILITY CONSTRUCTION SPECIFICATIONS, LATEST EDITION. ALL UTILITY CONSTRUCTION SHALL BE IN ACCORDANCE WITH THE MARION COUNTY UTILITY CONSTRUCTION SPECIFICATIONS, LATEST EDITION.
 9. ALL UTILITY CONSTRUCTION SHALL BE IN ACCORDANCE WITH THE MARION COUNTY UTILITY CONSTRUCTION SPECIFICATIONS, LATEST EDITION. ALL UTILITY CONSTRUCTION SHALL BE IN ACCORDANCE WITH THE MARION COUNTY UTILITY CONSTRUCTION SPECIFICATIONS, LATEST EDITION.
 10. ALL UTILITY CONSTRUCTION SHALL BE IN ACCORDANCE WITH THE MARION COUNTY UTILITY CONSTRUCTION SPECIFICATIONS, LATEST EDITION. ALL UTILITY CONSTRUCTION SHALL BE IN ACCORDANCE WITH THE MARION COUNTY UTILITY CONSTRUCTION SPECIFICATIONS, LATEST EDITION.
 11. ALL UTILITY CONSTRUCTION SHALL BE IN ACCORDANCE WITH THE MARION COUNTY UTILITY CONSTRUCTION SPECIFICATIONS, LATEST EDITION. ALL UTILITY CONSTRUCTION SHALL BE IN ACCORDANCE WITH THE MARION COUNTY UTILITY CONSTRUCTION SPECIFICATIONS, LATEST EDITION.
 12. ALL UTILITY CONSTRUCTION SHALL BE IN ACCORDANCE WITH THE MARION COUNTY UTILITY CONSTRUCTION SPECIFICATIONS, LATEST EDITION. ALL UTILITY CONSTRUCTION SHALL BE IN ACCORDANCE WITH THE MARION COUNTY UTILITY CONSTRUCTION SPECIFICATIONS, LATEST EDITION.
 13. ALL UTILITY CONSTRUCTION SHALL BE IN ACCORDANCE WITH THE MARION COUNTY UTILITY CONSTRUCTION SPECIFICATIONS, LATEST EDITION. ALL UTILITY CONSTRUCTION SHALL BE IN ACCORDANCE WITH THE MARION COUNTY UTILITY CONSTRUCTION SPECIFICATIONS, LATEST EDITION.
 14. ALL UTILITY CONSTRUCTION SHALL BE IN ACCORDANCE WITH THE MARION COUNTY UTILITY CONSTRUCTION SPECIFICATIONS, LATEST EDITION. ALL UTILITY CONSTRUCTION SHALL BE IN ACCORDANCE WITH THE MARION COUNTY UTILITY CONSTRUCTION SPECIFICATIONS, LATEST EDITION.
 15. ALL UTILITY CONSTRUCTION SHALL BE IN ACCORDANCE WITH THE MARION COUNTY UTILITY CONSTRUCTION SPECIFICATIONS, LATEST EDITION. ALL UTILITY CONSTRUCTION SHALL BE IN ACCORDANCE WITH THE MARION COUNTY UTILITY CONSTRUCTION SPECIFICATIONS, LATEST EDITION.
 16. ALL UTILITY CONSTRUCTION SHALL BE IN ACCORDANCE WITH THE MARION COUNTY UTILITY CONSTRUCTION SPECIFICATIONS, LATEST EDITION. ALL UTILITY CONSTRUCTION SHALL BE IN ACCORDANCE WITH THE MARION COUNTY UTILITY CONSTRUCTION SPECIFICATIONS, LATEST EDITION.
 17. ALL UTILITY CONSTRUCTION SHALL BE IN ACCORDANCE WITH THE MARION COUNTY UTILITY CONSTRUCTION SPECIFICATIONS, LATEST EDITION. ALL UTILITY CONSTRUCTION SHALL BE IN ACCORDANCE WITH THE MARION COUNTY UTILITY CONSTRUCTION SPECIFICATIONS, LATEST EDITION.
 18. ALL UTILITY CONSTRUCTION SHALL BE IN ACCORDANCE WITH THE MARION COUNTY UTILITY CONSTRUCTION SPECIFICATIONS, LATEST EDITION. ALL UTILITY CONSTRUCTION SHALL BE IN ACCORDANCE WITH THE MARION COUNTY UTILITY CONSTRUCTION SPECIFICATIONS, LATEST EDITION.
 19. ALL UTILITY CONSTRUCTION SHALL BE IN ACCORDANCE WITH THE MARION COUNTY UTILITY CONSTRUCTION SPECIFICATIONS, LATEST EDITION. ALL UTILITY CONSTRUCTION SHALL BE IN ACCORDANCE WITH THE MARION COUNTY UTILITY CONSTRUCTION SPECIFICATIONS, LATEST EDITION.
 20. ALL UTILITY CONSTRUCTION SHALL BE IN ACCORDANCE WITH THE MARION COUNTY UTILITY CONSTRUCTION SPECIFICATIONS, LATEST EDITION. ALL UTILITY CONSTRUCTION SHALL BE IN ACCORDANCE WITH THE MARION COUNTY UTILITY CONSTRUCTION SPECIFICATIONS, LATEST EDITION.

SEE SHEET - C6.2

SEE SHEET - C6.3

SANITARY SEWER DATA

STRUCTURE	TOP EL.	INVC. EL.	PIPES OUT	PIPE SIZE	PIPE LENGTH	SLOPE
EX 9-3	41.70	41.70	-	-	-	-
95-01	38.47	41.70	95-01 TO EX 9-3	12" PVC	275.0'	3.00%
95-02	38.43	41.70	95-02 TO 95-01	12" PVC	265.0'	3.75%
95-03	38.27	41.70	95-03 TO 95-02	12" PVC	128.7'	1.98%

HARVARD • JOLLY | **PRO**

1015 S. ORANGE AVENUE, SUITE 300, Ocala, FL 32668 | P: 352.267.0222 | www.harvardjolly.com | 14010104

MARION COUNTY PUBLIC SCHOOLS
MIDDLE SCHOOL DD

685 OAK ROAD
OCALA, FL 34472
80% CONSTRUCTION DOCUMENTS

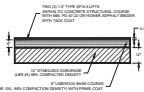
MAJOR SITE PLAN

DATE: 2024.09.09
 DRAWN BY: JZF
 CHECKED BY: JZF

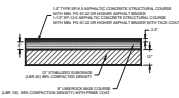
NAME, LIC. # & DATE:
 J. J. JOLLY, P.E., 12345, 12/15/2010

UTILITY PLAN

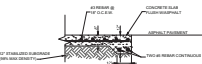
C6.1



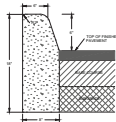
TYPICAL STANDARD DUTY PAVEMENT SECTION
N.T.S.



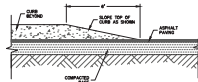
TYPICAL HEAVY DUTY PAVEMENT SECTION
N.T.S.



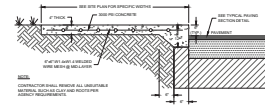
VEHICULAR CONCRETE PAVEMENT WITH THICKENED EDGE DETAIL



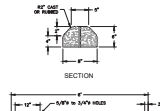
TYPE 'D' CURB
FINISH: 1.5\"/>



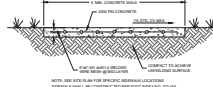
CURB TAPER
FINISH: 1.5\"/>



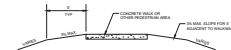
THICKENED EDGE SIDEWALK AND PAVEMENT SECTION



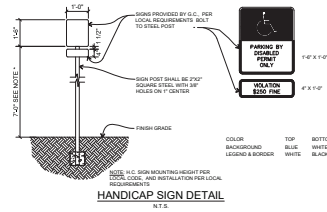
CONCRETE WHEEL STOP
FINISH: 1.5\"/>



TYPICAL SIDEWALK SECTION



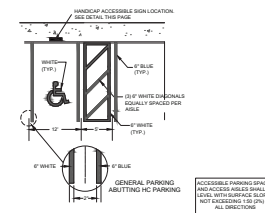
TYPICAL EDGE GRADING DETAIL



HANDICAP SIGN DETAIL
N.T.S.

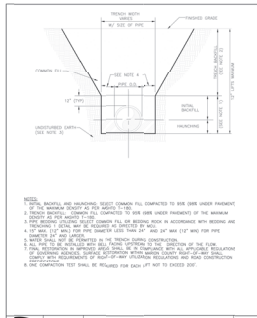


HANDICAP SYMBOL
N.T.S.

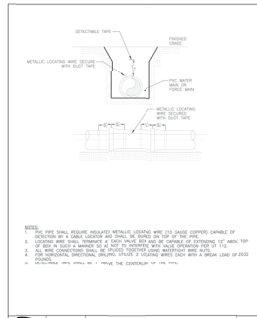


HANDICAP SPACE STRIPING DETAIL
N.T.S.

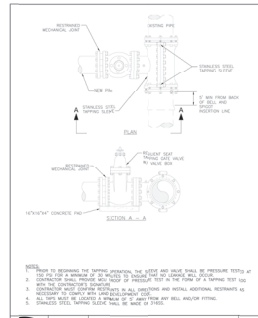
- NOTES:
1. WHEN BARRIER CURBS ARE USED IN LIEU OF TRAPEZOIDAL STOPPS, BARRIER CURBS MUST BE FINISHED BY 1\"/>



7.3.2 UT 103
BEDDING AND TRENCHING 2



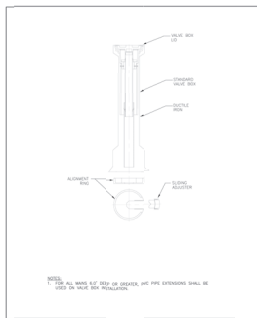
7.3.2 UT 104
PIPE LOCATING WIRE AND DETECTABLE TAPE



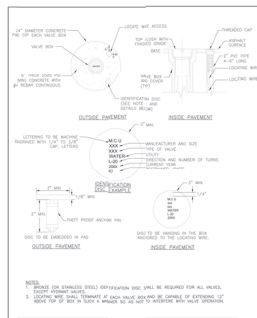
7.3.2 UT 105
TAPPING SLEEVE AND GATE VALVE ASSEMBLY



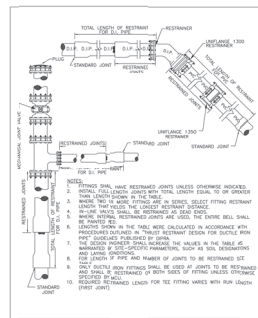
7.3.2 UT 110
TYPICAL VALVE BOX COVER



7.3.2 UT 111
SEALED VALVE BOX, ADJUSTABLE



7.3.2 UT 112
VALVE BOX PAD



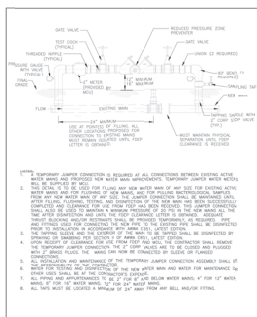
7.3.2 UT 116A
RESTRAINED PIPE TABLE

MINIMUM RESTRAINT LENGTHS (FT)

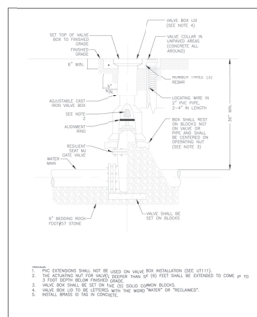
H-HORIZONTAL
= BACK SIDE OF FITTING AND VALVE
V-VERTICAL
= FOR TOP OR ENLARGED TOP OR BELL END VERTICAL-DOWN

Restraint Type	Restraint Length (ft)	Restraint Length (ft)
Restraint Type 1	10	10
Restraint Type 2	10	10
Restraint Type 3	10	10
Restraint Type 4	10	10
Restraint Type 5	10	10
Restraint Type 6	10	10
Restraint Type 7	10	10
Restraint Type 8	10	10
Restraint Type 9	10	10
Restraint Type 10	10	10
Restraint Type 11	10	10
Restraint Type 12	10	10
Restraint Type 13	10	10
Restraint Type 14	10	10
Restraint Type 15	10	10
Restraint Type 16	10	10
Restraint Type 17	10	10
Restraint Type 18	10	10
Restraint Type 19	10	10
Restraint Type 20	10	10
Restraint Type 21	10	10
Restraint Type 22	10	10
Restraint Type 23	10	10
Restraint Type 24	10	10
Restraint Type 25	10	10
Restraint Type 26	10	10
Restraint Type 27	10	10
Restraint Type 28	10	10
Restraint Type 29	10	10
Restraint Type 30	10	10
Restraint Type 31	10	10
Restraint Type 32	10	10
Restraint Type 33	10	10
Restraint Type 34	10	10
Restraint Type 35	10	10
Restraint Type 36	10	10
Restraint Type 37	10	10
Restraint Type 38	10	10
Restraint Type 39	10	10
Restraint Type 40	10	10
Restraint Type 41	10	10
Restraint Type 42	10	10
Restraint Type 43	10	10
Restraint Type 44	10	10
Restraint Type 45	10	10
Restraint Type 46	10	10
Restraint Type 47	10	10
Restraint Type 48	10	10
Restraint Type 49	10	10
Restraint Type 50	10	10
Restraint Type 51	10	10
Restraint Type 52	10	10
Restraint Type 53	10	10
Restraint Type 54	10	10
Restraint Type 55	10	10
Restraint Type 56	10	10
Restraint Type 57	10	10
Restraint Type 58	10	10
Restraint Type 59	10	10
Restraint Type 60	10	10
Restraint Type 61	10	10
Restraint Type 62	10	10
Restraint Type 63	10	10
Restraint Type 64	10	10
Restraint Type 65	10	10
Restraint Type 66	10	10
Restraint Type 67	10	10
Restraint Type 68	10	10
Restraint Type 69	10	10
Restraint Type 70	10	10
Restraint Type 71	10	10
Restraint Type 72	10	10
Restraint Type 73	10	10
Restraint Type 74	10	10
Restraint Type 75	10	10
Restraint Type 76	10	10
Restraint Type 77	10	10
Restraint Type 78	10	10
Restraint Type 79	10	10
Restraint Type 80	10	10
Restraint Type 81	10	10
Restraint Type 82	10	10
Restraint Type 83	10	10
Restraint Type 84	10	10
Restraint Type 85	10	10
Restraint Type 86	10	10
Restraint Type 87	10	10
Restraint Type 88	10	10
Restraint Type 89	10	10
Restraint Type 90	10	10
Restraint Type 91	10	10
Restraint Type 92	10	10
Restraint Type 93	10	10
Restraint Type 94	10	10
Restraint Type 95	10	10
Restraint Type 96	10	10
Restraint Type 97	10	10
Restraint Type 98	10	10
Restraint Type 99	10	10
Restraint Type 100	10	10

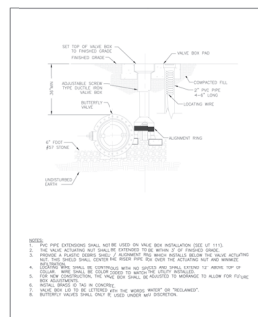
7.3.2 UT 116B
RESTRAINED PIPE TABLE



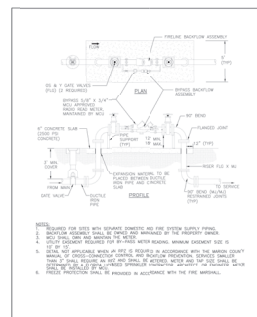
7.3.2 UT 203
TEMPORARY JUMPER CONNECTION



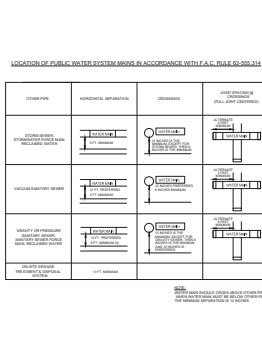
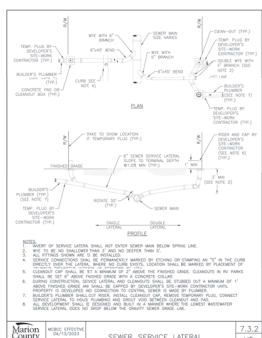
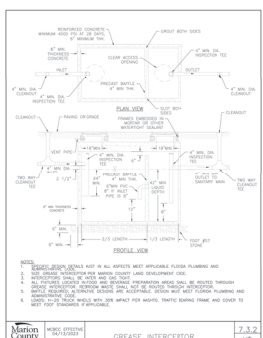
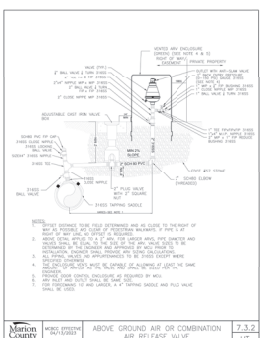
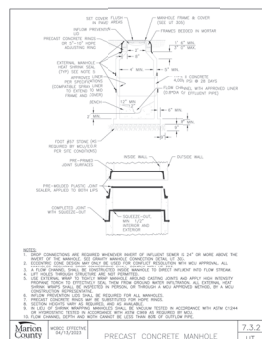
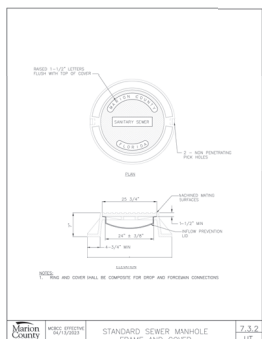
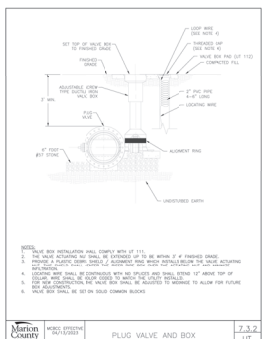
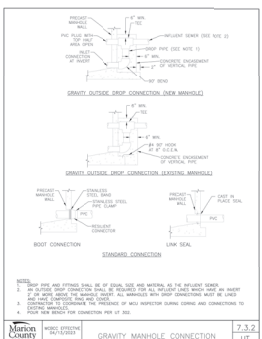
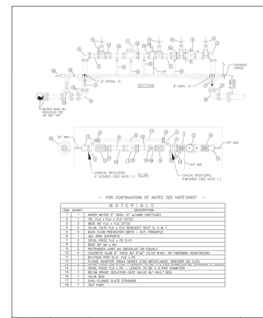
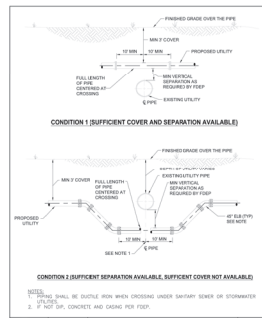
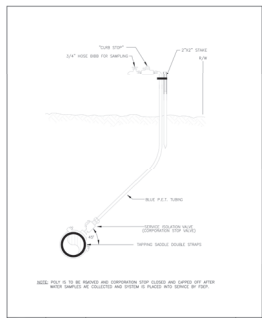
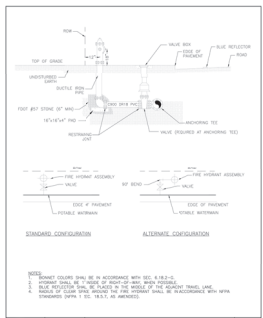
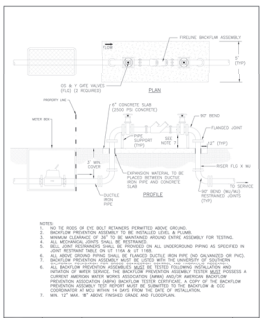
7.3.2 UT 204
GATE VALVE WATER AND RECLAIMED MAINS

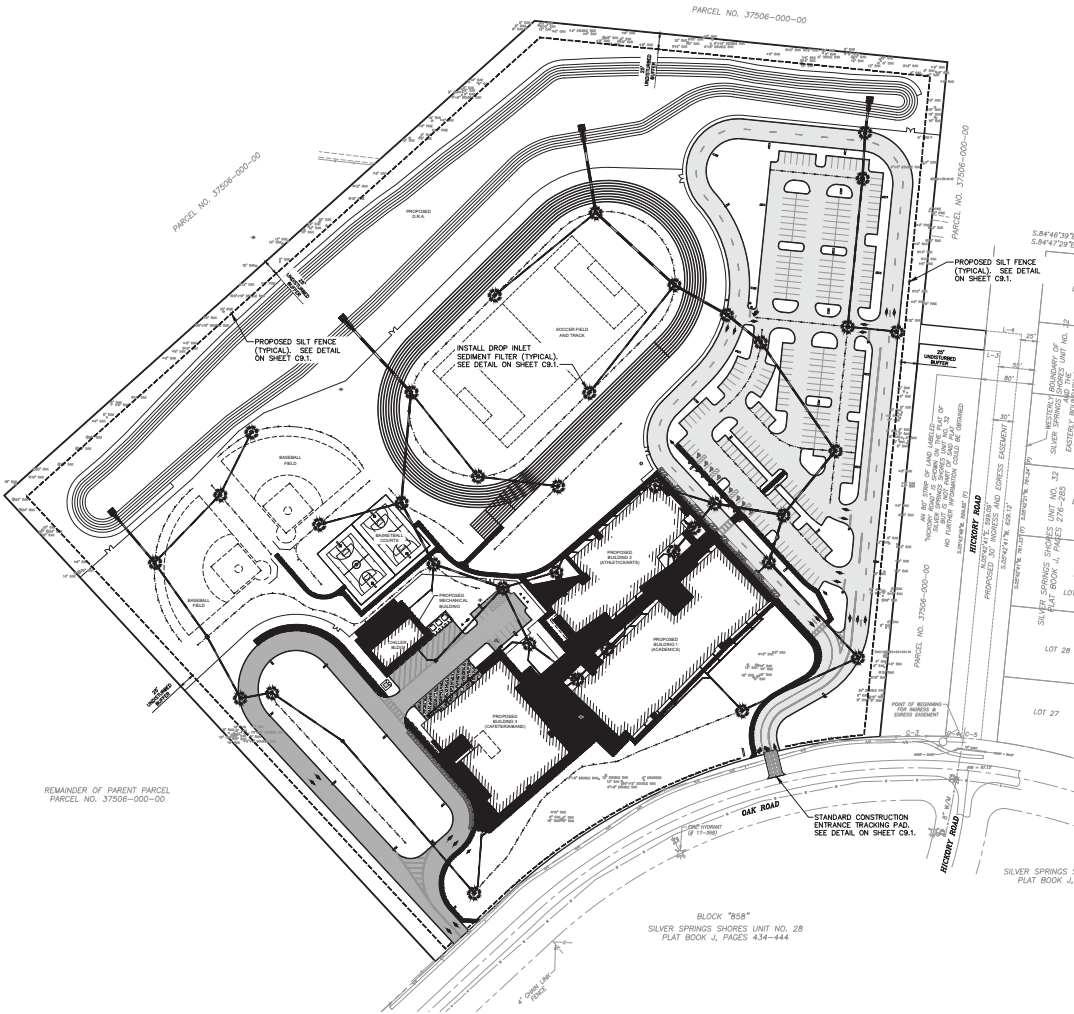


7.3.2 UT 205
BUTTERFLY VALVE AND BOX WATER AND RECLAIMED MAINS



7.3.2 UT 208
FIRE LINE DOUBLE DETECTOR CHECK VALVE ASSEMBLY



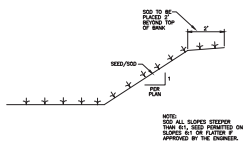


- EROSION CONTROL NOTES**
1. EROSION CONTROL AND SEDIMENT PROTECTION MEASURES SHALL BE INSTALLED AND MAINTAINED THROUGHOUT THE CONSTRUCTION PERIOD TO PREVENT EROSION AND SEDIMENTATION FROM OCCURRING ON THE CONSTRUCTION SITE. EROSION CONTROL MEASURES SHALL BE INSTALLED AND MAINTAINED THROUGHOUT THE CONSTRUCTION PERIOD TO PREVENT EROSION AND SEDIMENTATION FROM OCCURRING ON THE CONSTRUCTION SITE.
 2. THE CONSTRUCTION SITE SHALL BE PROTECTED FROM EROSION AND SEDIMENTATION BY THE INSTALLATION AND MAINTENANCE OF EROSION CONTROL MEASURES THROUGHOUT THE CONSTRUCTION PERIOD.
 3. THE SILT FENCES SHALL BE INSTALLED AND MAINTAINED THROUGHOUT THE CONSTRUCTION PERIOD TO PREVENT EROSION AND SEDIMENTATION FROM OCCURRING ON THE CONSTRUCTION SITE.
 4. THE SILT FENCES SHALL BE INSTALLED AND MAINTAINED THROUGHOUT THE CONSTRUCTION PERIOD TO PREVENT EROSION AND SEDIMENTATION FROM OCCURRING ON THE CONSTRUCTION SITE.
 5. THE SILT FENCES SHALL BE INSTALLED AND MAINTAINED THROUGHOUT THE CONSTRUCTION PERIOD TO PREVENT EROSION AND SEDIMENTATION FROM OCCURRING ON THE CONSTRUCTION SITE.
 6. THE SILT FENCES SHALL BE INSTALLED AND MAINTAINED THROUGHOUT THE CONSTRUCTION PERIOD TO PREVENT EROSION AND SEDIMENTATION FROM OCCURRING ON THE CONSTRUCTION SITE.
 7. THE SILT FENCES SHALL BE INSTALLED AND MAINTAINED THROUGHOUT THE CONSTRUCTION PERIOD TO PREVENT EROSION AND SEDIMENTATION FROM OCCURRING ON THE CONSTRUCTION SITE.
 8. THE SILT FENCES SHALL BE INSTALLED AND MAINTAINED THROUGHOUT THE CONSTRUCTION PERIOD TO PREVENT EROSION AND SEDIMENTATION FROM OCCURRING ON THE CONSTRUCTION SITE.
 9. THE SILT FENCES SHALL BE INSTALLED AND MAINTAINED THROUGHOUT THE CONSTRUCTION PERIOD TO PREVENT EROSION AND SEDIMENTATION FROM OCCURRING ON THE CONSTRUCTION SITE.
 10. THE SILT FENCES SHALL BE INSTALLED AND MAINTAINED THROUGHOUT THE CONSTRUCTION PERIOD TO PREVENT EROSION AND SEDIMENTATION FROM OCCURRING ON THE CONSTRUCTION SITE.
 11. THE SILT FENCES SHALL BE INSTALLED AND MAINTAINED THROUGHOUT THE CONSTRUCTION PERIOD TO PREVENT EROSION AND SEDIMENTATION FROM OCCURRING ON THE CONSTRUCTION SITE.
 12. THE SILT FENCES SHALL BE INSTALLED AND MAINTAINED THROUGHOUT THE CONSTRUCTION PERIOD TO PREVENT EROSION AND SEDIMENTATION FROM OCCURRING ON THE CONSTRUCTION SITE.
 13. THE SILT FENCES SHALL BE INSTALLED AND MAINTAINED THROUGHOUT THE CONSTRUCTION PERIOD TO PREVENT EROSION AND SEDIMENTATION FROM OCCURRING ON THE CONSTRUCTION SITE.
 14. THE SILT FENCES SHALL BE INSTALLED AND MAINTAINED THROUGHOUT THE CONSTRUCTION PERIOD TO PREVENT EROSION AND SEDIMENTATION FROM OCCURRING ON THE CONSTRUCTION SITE.
 15. THE SILT FENCES SHALL BE INSTALLED AND MAINTAINED THROUGHOUT THE CONSTRUCTION PERIOD TO PREVENT EROSION AND SEDIMENTATION FROM OCCURRING ON THE CONSTRUCTION SITE.
 16. THE SILT FENCES SHALL BE INSTALLED AND MAINTAINED THROUGHOUT THE CONSTRUCTION PERIOD TO PREVENT EROSION AND SEDIMENTATION FROM OCCURRING ON THE CONSTRUCTION SITE.
 17. THE SILT FENCES SHALL BE INSTALLED AND MAINTAINED THROUGHOUT THE CONSTRUCTION PERIOD TO PREVENT EROSION AND SEDIMENTATION FROM OCCURRING ON THE CONSTRUCTION SITE.
 18. THE SILT FENCES SHALL BE INSTALLED AND MAINTAINED THROUGHOUT THE CONSTRUCTION PERIOD TO PREVENT EROSION AND SEDIMENTATION FROM OCCURRING ON THE CONSTRUCTION SITE.
 19. THE SILT FENCES SHALL BE INSTALLED AND MAINTAINED THROUGHOUT THE CONSTRUCTION PERIOD TO PREVENT EROSION AND SEDIMENTATION FROM OCCURRING ON THE CONSTRUCTION SITE.
 20. THE SILT FENCES SHALL BE INSTALLED AND MAINTAINED THROUGHOUT THE CONSTRUCTION PERIOD TO PREVENT EROSION AND SEDIMENTATION FROM OCCURRING ON THE CONSTRUCTION SITE.

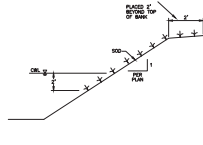
OPERATION AND MAINTENANCE INSTRUCTIONS

AS REQUIRED BY ALL COUNTY ORDINANCES AND REGULATIONS, THE OPERATOR SHALL MAINTAIN THE EROSION CONTROL MEASURES THROUGHOUT THE CONSTRUCTION PERIOD TO PREVENT EROSION AND SEDIMENTATION FROM OCCURRING ON THE CONSTRUCTION SITE.

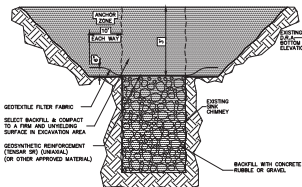
IN ADDITION, THE OPERATOR SHALL MAINTAIN THE EROSION CONTROL MEASURES THROUGHOUT THE CONSTRUCTION PERIOD TO PREVENT EROSION AND SEDIMENTATION FROM OCCURRING ON THE CONSTRUCTION SITE.



TYPICAL DRY DRAINAGE RETENTION AREA SECTION
A/E/A

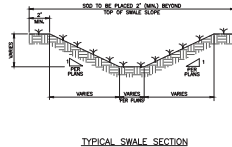
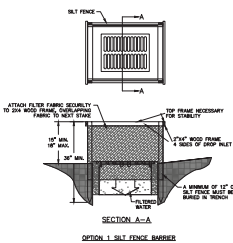


TYPICAL WET RETENTION/DETENTION POND SECTION
A/E/A

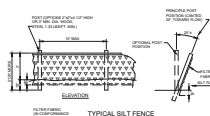


TYPICAL SINK CHIMNEY REPAIR DETAIL
A/E/A

1. ONLY ALUMINUM BARRIERS ARE TO BE USED FOR SMALL NEARLY LEVEL DRAINAGE AREAS, LESS THAN 500.
2. USE 2"x4" WOOD OR EQUIVALENT METAL STRIPS (3 FT. MIN. LENGTH).
3. REVEAL 2"x4" WOOD FRAME TO INSURE DURABILITY.
4. SEE EROSION CONTROL PLAN FOR LOCATIONS AND APPLICATIONS.



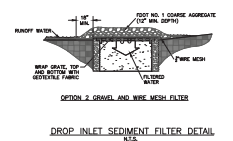
TYPICAL SWALE SECTION
A/E/A



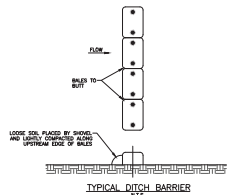
TYPICAL SILT FENCE
A/E/A



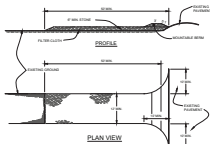
TREE PROTECTION DETAIL
A/E/A



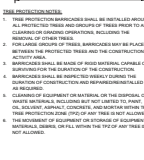
DROP INLET SEDIMENT FILTER DETAIL
A/E/A



TYPICAL DITCH BARRIER
A/E/A



STABILIZED CONSTRUCTION ENTRANCE
A/E/A



TREE PROTECTION DETAIL
A/E/A

1. TREE PROTECTION BARRIERS SHALL BE INSTALLED BEFORE ANY CONSTRUCTION OF THE SOAK AREA TO BE PROTECTED FROM EROSION.
2. FOR LARGE GROUPS OF TREES, BARRIERS MAY BE PLACED OUTSIDE THE PROTECTED TREES AND THE CONSTRUCTION DETOUR AREA.
3. BARRIERS SHALL BE MADE OF RIGID MATERIAL, CAPABLE OF WITHSTANDING THE WEIGHT OF THE CONSTRUCTION EQUIPMENT.
4. BARRIERS SHALL BE INSPECTED WEEKLY DURING THE CONSTRUCTION PERIOD AND REPAIRS SHALL BE MADE AS NEEDED.
5. CLEANING OF EQUIPMENT OR MATERIAL ON THE SURFACE OF SOAK AREAS SHALL BE PROHIBITED AND SHALL BE REPORTED TO THE DISTRICT IMMEDIATELY. CONSTRUCTION SHALL STOP WITHIN THE TREE PROTECTION ZONE UPON ANY TREE NOT SURVIVING.
6. THE DISTRICT WILL BE NOTIFIED OF ANY DAMAGE TO BARRIERS, MATERIALS, OR FILL WITHIN THE TREE PROTECTION ZONE AS SOON AS POSSIBLE.

TREE PROTECTION DETAIL
A/E/A



TO THE BEST OF HIS KNOWLEDGE AND BELIEF, THE DESIGN AND CONSTRUCTION DOCUMENTS ACCURATELY REPRESENT THE PROJECT AND THE SITE CONDITIONS.