

RESOLUTION NO. 25-R-____

A RESOLUTION OF THE BOARD OF COUNTY COMMISSIONERS OF MARION COUNTY, FLORIDA, TO SUPPORT THE WATER LINE EXTENSION PROGRAM/IN-HOUSE WATER LINE EXTENSION PROGRAM; PROVIDING CERTAIN FINDINGS AND AUTHORITY; ESTABLISHING THE PROGRAM SERVICE AREA; ESTABLISHING ONE-TIME CAPITAL CONNECTION FEE FOR THE SERVICE AREA; AND PROVIDING AN EFFECTIVE DATE.

WHEREAS, on May 21, 2024, the Board of County Commissioners of Marion County, Florida (the “Board”) approved Ordinance No. 2024-13 for the addition of the In-House Water Line Extension Program (“Program”) to include projects funded by the Board and completed by the Marion County Utilities (“MCU”) In-House Crew (“Crew”); and

WHEREAS, it is anticipated that lots not yet connected to MCU’s utility system (“System”) will pay a one-time Capital Connection Fee (“CCF”) to fund its portion of the water line extension and those monies will be reinvested into the Program to enable future water main extensions and connections; and

WHEREAS, the Program requires the Board to establish, by Resolution, a one-time CCF establishing a pro-rata share for parcels connecting single family residences participating in the Program (“Benefitting Lots”) and the payment terms and conditions applicable thereto, which may include differing fees based on the cost and distance of required extensions; and

WHEREAS, Alfred Reid (“Owner”) requested an Availability Notice from MCU on parcel number 3507-017-011 (“Parcel”) and MCU advised the parcel was subject to a standard water connection based on GIS data provided from the former utility, Marion Utilities, which upon field verification by MCU was erroneous; and

WHEREAS, MCU offered the Owner the option to build the main through its Crew; and

WHEREAS, Owner has been authorized by the then-MCU Director to alternatively participate in the Program through a unique set of circumstances which does not set any precedent for future water main extension projects; and

WHEREAS, each Benefitting Lot owner will pay only its lot’s CCF, which will be reinvested in the Program to help pay costs of the water line extension program; and

WHEREAS, the Board desires to establish discrete geographical area(s) of unincorporated Marion County designated by Board resolution as "In-House Water Main Extension Program Service Areas," where funding is available to cover the water main extension cost; and

WHEREAS, the CCF is determined by apportioning the estimated cost of the water line extension among all anticipated lots to be served by the water line extension on a pro rata basis; and

WHEREAS, the work is complete and certified as of August 20, 2024, and the actual total project's cost and resulting per parcel CCF are derived from MCU's final costs using actual materials, labor, equipment, and timeline to construct;

NOW, THEREFORE, BE IT RESOLVED by the Board of County Commissioners of Marion County, Florida:

SECTION 1. RECITALS. The above recitals are true and correct and are hereby incorporated herein by reference.

SECTION 2. AUTHORITY. This resolution is adopted pursuant to the provisions of Chapter 19 – Water and Sewers, Article III. – Water and Wastewater Facilities, Division 5. – Short Water Line Extension Program/In-House Water Line Extension Program, of the Code of Ordinances of Marion County, Florida.

SECTION 3. ESTABLISH THE IN-HOUSE LINE EXTENSION PROGRAM SERVICE AREA. Pursuant to Section 19-218, the Board hereby designates the following In-House Extension Program Service Area:

Parcel **3507-017-011** and surrounding improved parcels of the water main extension are herein attached as **Exhibit A**. Sketch is an MCU-verified as-built, based on work completed through a professionally engineered Issued for Construction ("IFC") plans on file with County.

SECTION 4. ESTABLISHING ONE-TIME CAPITAL CONNECTION FEE.

(A) Pursuant to Section 19-217, the one-time CCF will be determined by apportioning the actual cost of this water line extension work using County's bid pricing, labor and materials herein attached as **Exhibit B** to be served by the water line extension designed to serve the parcels in Exhibits A and B. It is further noted that additional fees may include:

1. Each qualifying water service applicant will additionally be responsible for the cost of all On-site facilities as defined in Section 19-122.

2. The water service applicant must pay all applicable costs and fees for the requested service which may include, without limitation, tap fees and system development fees as required by the County. All costs and fees are due in accordance with Section 19-217(c) and the County's existing utility regulations.
3. The water service is subject to all applicable federal, state, and local permits and requirements and any required encroachments

(B) The CCF for this In-House Water Line Extension Program Service Area Project **MCIH-KC22-01** is **\$4,235.38** per lot.

(C) Through this final Resolution.

1. All improved parcels will be supported by as-builts by County, actual materials, labor, and equipment used.
2. MCU will issue owners of all affected parcels a Benefitting Lot Notice which certifies MCU's costs, and confirms the total number of Benefitting Lots to support the CCF due at time of connection.
3. Property owners of Benefitting Lots which were developed and connected to the System before this final Resolution, and who were assessed a higher CCF will be refunded the difference by MCU within 90 days of the final Resolution's approval.

SECTION 5. EFFECTIVE DATE. This Resolution shall become effective immediately upon its adoption.

DULY ADOPTED in regular session this ____ day of _____, 2025.

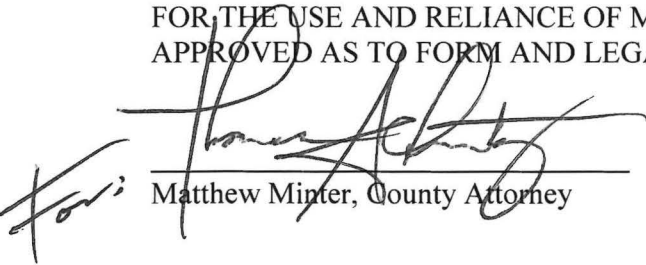
**BOARD OF COUNTY COMMISSIONERS
OF MARION COUNTY, FLORIDA**

Kathy Bryant, Chairman

ATTEST:

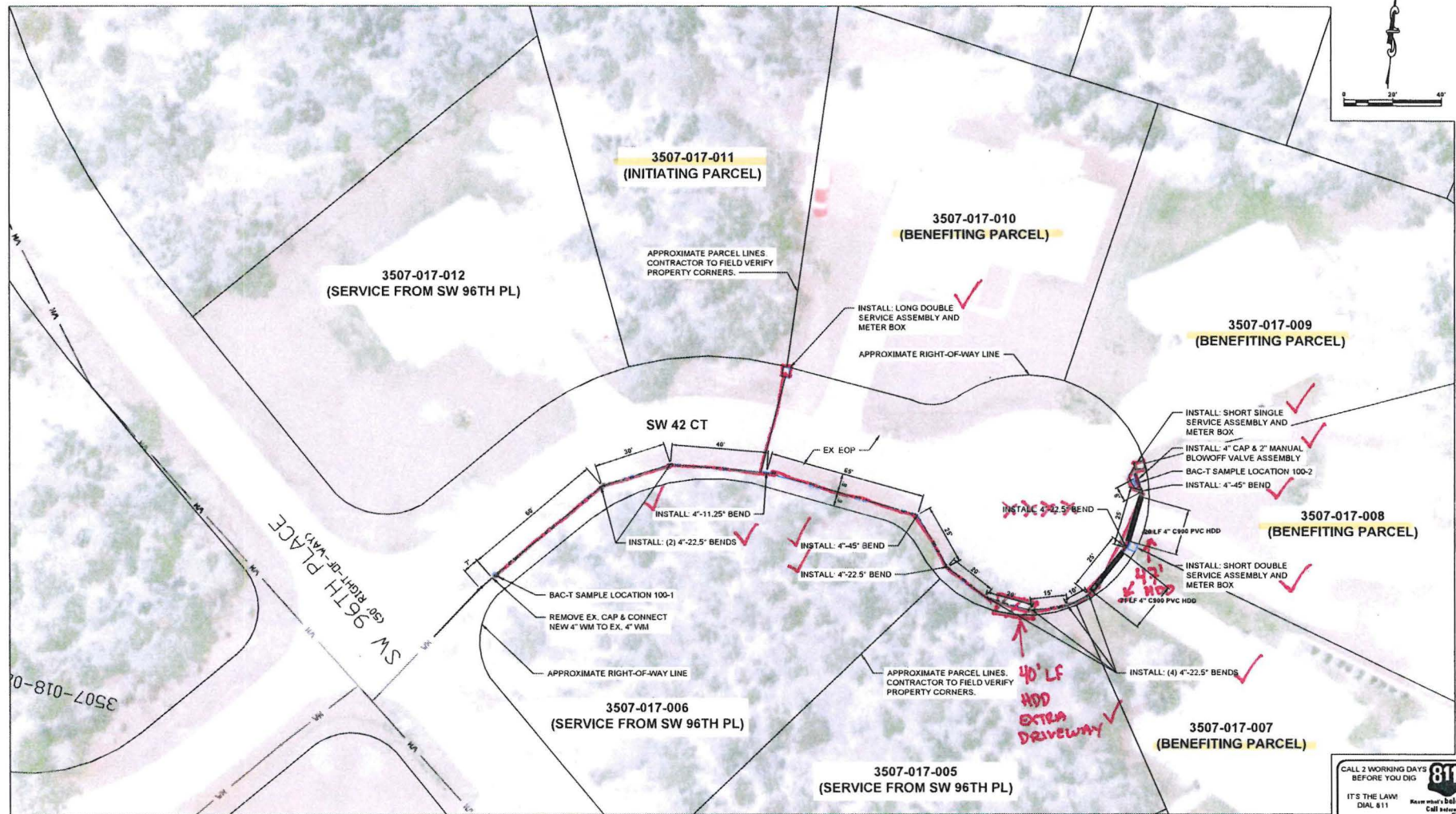
Gregory C. Harrell, Clerk

FOR THE USE AND RELIANCE OF MARION COUNTY ONLY.
APPROVED AS TO FORM AND LEGAL SUFFICIENCY:



Matthew Minter, County Attorney

EXHIBIT A - Improved Parcels



NOTE: SILT FENCE SHALL BE PLACED
ALONG ENTIRE LENGTH OF PROJECT

<div style="display: flex; justify-content: space-between;"> <div> BRN 7/29/24 </div> <div> ISSUED FOR CONSTRUCTION </div> <div> Verify Scale <small>Scale to match not original drawing</small> <hr/> <small>do not scale to this sheet, adjust to drawing as needed</small> </div> <div> Prepared By: MARION COUNTY UTILITIES DEPARTMENT </div> <div>  </div> <div> MARION COUNTY UTILITIES DEPARTMENT 11600 S US HWY 441 BELLEVUE, FLORIDA 34420 PH: 352-397-6800 FAX: 352-397-6901 </div> <div> <div style="display: flex; justify-content: space-between;"> <div> DESIGNED BY DRAWN BY CHECKED BY APPROVED BY </div> <div> DATE </div> </div> </div> <div> KINGSLAND COUNTRY ESTATES PID # 3507-017-011 WATER MAIN EXTENSION </div> <div> PROJECT NO. MCJH-KC22-01 </div> <div> DATE JUNE 2024 </div> <div> MARK W. THOMAS, P.E. FLORIDA LICENSE 86451 </div> <div> PLANSHEET 1 </div> <div> SHEET NO. C-100 </div> </div>			
NO.	DESCRIPTION	BY	DATE

FILE L:\Legal\InHouse VME\VMC\HRC22-01\Plansheets\100.dwg LAST SAVED: Thu, 06/20/24 10:17a PLOTTED: Thu, 06/20/24 10:10a BY mark.johnson

MARION COUNTY UTILITIES
ENGINEERING & CONSTRUCTION
IN HOUSE PROJECTS - THE AVENGERS

MCIH-KC22-01																	
Pipe Installed								Total Construction Cost		Benefitting Parcel							
Size	4	Inch	Qty	342	LF	≈	0.06	mi	\$21,176.92		Quantity	5	Cost/Parcel	\$	4,235.38		
ITEM	DESCRIPTION								INSTALLED COSTS								
									QTY	UNIT	UNIT PRICE	TOTAL					
1	MATERIALS																
										Material Construction Costs		\$			6,376.41		
2	SERVICES PER CONTRACT																
2.1	BAC-T TESTING - BID #: 23B-185																
2.1.1	Samples to be Pulled per day (1 to 3)								8	EA	\$	200.00	\$			1,600.00	
2.2	HORIZONTAL DIRECTIONAL DRILL - BID #: 23B-183																
2.2.1	Mobilization and Demobilization								1	LS	\$	900.00	\$			900.00	
2.2.2	Directional Drill 2-inch Schedule 40 PVC Casing (1 - 60 ft)								40	LF	\$	41.00	\$			1,640.00	
2.2.6	Directional Drill 4-inch PVC C900 DR 18 (61 ft or more)								140	LF	\$	25.00	\$			3,500.00	
2.4	SOD RESTORATION - BID #: 24B-118																
2.4.5	Bahia Sod - Rolls - Installed - \$500 Minimum (158 SY)								373	SY	\$	3.15	\$			1,174.95	
2.8	ENGINEERING - BID #: 20Q-074-TO-15																
2.8.1	Design Fee								1	EA	\$	700.00	\$			700.00	
										Services Per Contract Costs		\$			9,514.95		
3	MARION COUNTY UTILITIES																
3.1	EQUIPMENT ON-SITE																
3.1.1	Excavator, Skid Steer, Pickup Trucks, Trailers								0.51	Week	\$	807.04	\$			411.15	
3.2	MANPOWER ON-SITE																
3.2.1	Line Crew - 5 Employees (F + EO + PL + TM + HM)								0.73	Week	\$	6,400.00	\$			4,674.41	
3.3	PERMITTING																
3.3.1	Right of Way Permitting Fee								1	EA	\$	200.00	\$			200.00	
										MCU Construction Costs		\$			5,285.56		
										TOTAL Construction Costs		\$			21,176.92		