



STONE CREEK BY DEL WEBB SOLAIRE PHASE 1

A PLANNED UNIT DEVELOPMENT

SECTION 1, TOWNSHIP 16 SOUTH, RANGE 20 EAST

MARION COUNTY, FLORIDA

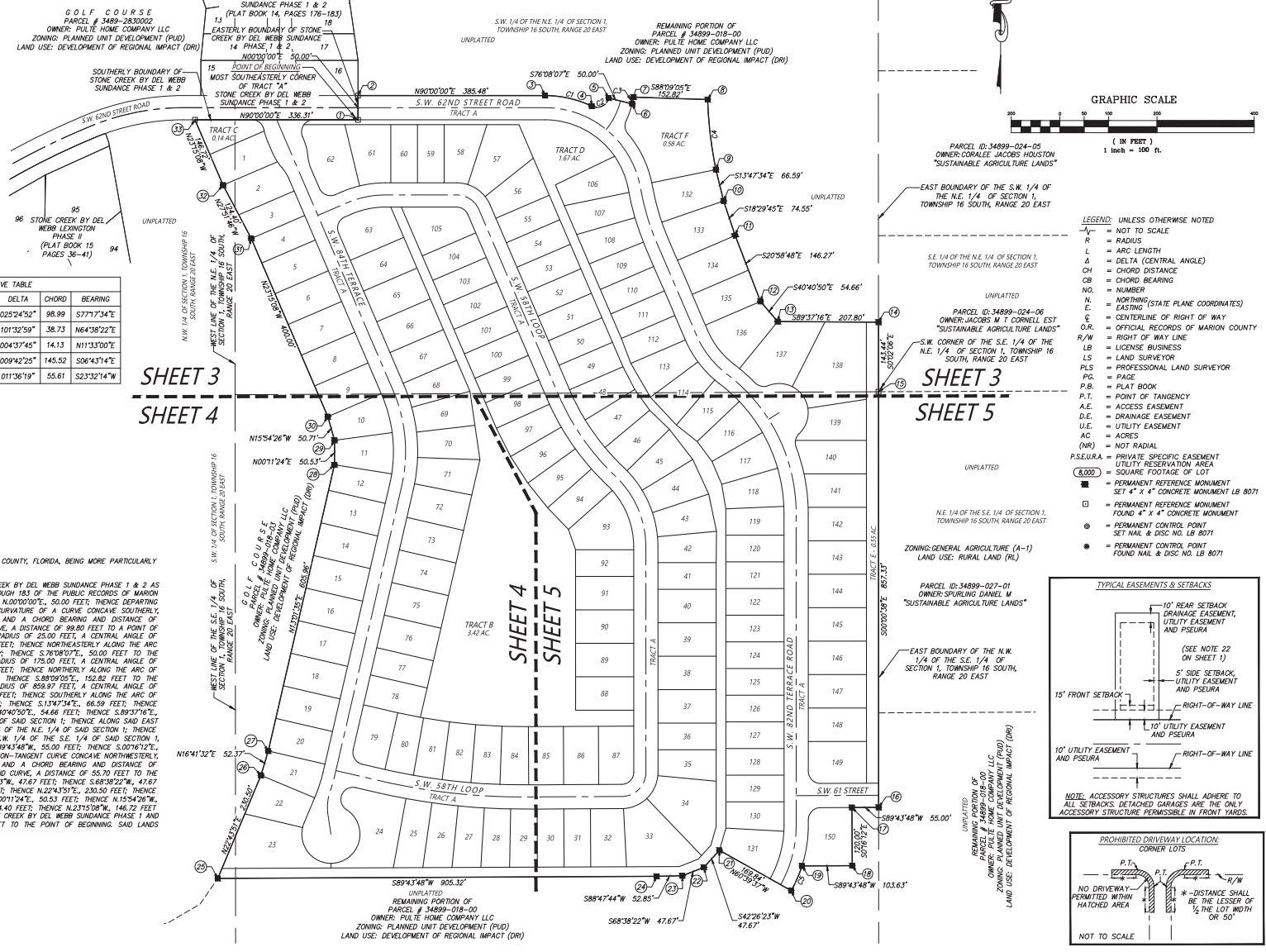
PLAT BOOK _____, PAGE _____
SHEET 2 OF 5

STATE PLANE COORDINATE	ID	NORTHING	EASTING
1743646.56	1	573305.89	
1743696.56	2	573306.21	
1743694.04	3	573691.68	
1743671.64	4	573788.10	
1743688.00	5	573823.21	
1743675.70	6	573871.67	
1743689.53	7	573874.59	
1743683.61	8	574027.30	
1743538.98	9	574043.39	
1743474.20	10	574058.84	
1743403.35	11	574082.03	
1743266.44	12	574133.51	
1743224.76	13	574168.86	
1743222.03	14	574376.64	
1743078.60	15	574375.79	
1742221.29	16	574370.36	
1742221.39	17	574315.36	
1742101.39	18	574315.14	
1742101.58	19	574211.51	
1742050.74	20	574188.97	
1742134.93	21	574041.46	
1742099.96	22	574009.07	
1742082.89	23	573964.56	
1742082.12	24	573911.71	
1742083.76	25	573906.39	
1742295.78	26	573906.84	
1742345.84	27	573112.21	
1742935.29	28	573252.64	
1742985.82	29	573253.14	
1743034.68	30	573239.56	
1743403.22	31	573084.05	
1743515.57	32	573026.63	
1743648.75	33	572969.59	

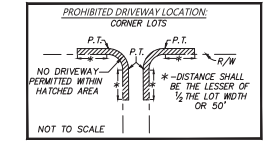
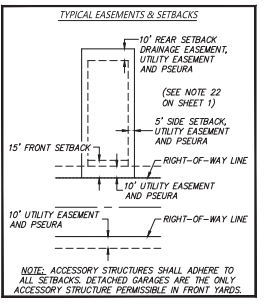
CURVE	LENGTH	RADIUS	DELTA	CHORD	BEARING
C1	99.80	225.00	025°24'52"	98.99	S77°17'34"E
C2	44.31	25.00	101°32'59"	38.73	N64°38'22"E
C3	14.14	175.00	004°37'45"	14.13	N11°33'00"E
C4	145.69	859.97	009°42'25"	145.52	S06°43'14"W
C5	55.70	275.00	011°36'19"	55.61	S23°32'14"W

DESCRIPTION
A PORTION OF SECTION 1, TOWNSHIP 16 SOUTH, RANGE 20 EAST, MARION COUNTY, FLORIDA, BEING MORE PARTICULARLY DESCRIBED AS FOLLOWS:
BEGIN AT THE MOST SOUTHEASTERLY CORNER OF TRACT "A" OF STONE CREEK BY DEL WEBB SOLAIRE PHASE 1 & 2 AS PER THE PLAT THEREOF AS RECORDED IN PLAT BOOK 14, PAGES 176 THROUGH 183 OF THE PUBLIC RECORDS OF MARION COUNTY, FLORIDA; THENCE ALONG THE EASTERLY BOUNDARY OF SAID PLAT, N0°00'00", 50.00 FEET; THENCE DEPARTING SAID EASTERLY BOUNDARY, N9°00'00", 385.48 FEET TO A POINT OF CURVATURE OF A CURVE CONCAVE SOUTHERLY, HAVING A RADIUS OF 225.00 FEET, A CENTRAL ANGLE OF 25°24'52", AND A CHORD BEARING AND DISTANCE OF S77°17'34"E, 98.99 FEET; THENCE EASTERLY ALONG THE ARC OF SAID CURVE, A DISTANCE OF 99.80 FEET TO A POINT OF REVERSE CURVATURE OF A CURVE CONCAVE NORTHEASTERLY, HAVING A RADIUS OF 25.00 FEET, A CENTRAL ANGLE OF 101°32'59", AND A CHORD BEARING AND DISTANCE OF N64°38'22"E, 38.73 FEET; THENCE NORTHEASTERLY ALONG THE ARC OF SAID CURVE, A DISTANCE OF 44.31 FEET TO A POINT OF TANGENCY; THENCE S76°08'07", 50.00 FEET TO THE BEGINNING OF A NON-TANGENT CURVE CONCAVE WESTERLY, HAVING A RADIUS OF 175.00 FEET, A CENTRAL ANGLE OF 04°37'45", AND A CHORD BEARING AND DISTANCE OF N11°33'00"E, 14.13 FEET; THENCE NORTHERLY ALONG THE ARC OF SAID CURVE, A DISTANCE OF 14.14 FEET TO THE END OF SAID CURVE; THENCE S69°09'09", 150.89 FEET TO THE BEGINNING OF A NON-TANGENT CURVE CONCAVE EASTERLY, HAVING A RADIUS OF 859.97 FEET, A CENTRAL ANGLE OF 09°42'25", AND A CHORD BEARING AND DISTANCE OF S06°43'14"E, 145.52 FEET; THENCE SOUTHERLY ALONG THE ARC OF SAID CURVE, A DISTANCE OF 145.69 FEET TO THE END OF SAID CURVE; THENCE S124°24'24", 168.94 FEET; THENCE S182°29'45"E, 74.55 FEET; THENCE S205°58'48"E, 146.27 FEET; THENCE S40°50'50", 54.66 FEET; THENCE S89°37'16", 207.80 FEET TO THE EAST BOUNDARY OF THE S.W. 1/4 OF THE N.E. 1/4 OF SAID SECTION 1; THENCE ALONG SAID EAST BOUNDARY, S02°02'02", 143.44 FEET TO THE S.W. CORNER OF THE S.E. 1/4 OF THE N.E. 1/4 OF SAID SECTION 1; THENCE DEPARTING SAID EAST BOUNDARY, ALONG THE EAST BOUNDARY OF THE N.W. 1/4 OF THE S.E. 1/4 OF SAID SECTION 1, S00°00'36", 897.33 FEET; THENCE DEPARTING SAID EAST BOUNDARY, S89°43'48"W, 55.00 FEET; THENCE S07°16'12", 123.00 FEET; THENCE S89°43'48"W, 103.63 FEET TO THE BEGINNING OF A NON-TANGENT CURVE CONCAVE NORTHEASTERLY, HAVING A RADIUS OF 275.00 FEET, A CENTRAL ANGLE OF 11°36'19", AND A CHORD BEARING AND DISTANCE OF S23°32'14"W, 55.61 FEET; THENCE SOUTHWESTERLY ALONG THE ARC OF SAID CURVE, A DISTANCE OF 55.70 FEET TO THE END OF SAID CURVE; THENCE N60°19'57"W, 169.84 FEET; THENCE S42°26'23"W, 47.67 FEET; THENCE S68°52'22"W, 47.67 FEET; THENCE S88°47'44"W, 52.85 FEET; THENCE S89°43'48"W, 90.52 FEET; THENCE N22°43'51"E, 230.50 FEET; THENCE N16°41'32", 52.37 FEET; THENCE N13°01'35", 605.96 FEET; THENCE N00°11'24"E, 50.53 FEET; THENCE N18°54'26"W, 50.71 FEET; THENCE N23°59'44"W, 400.00 FEET; THENCE N07°51'46"W, 124.40 FEET; THENCE N23°19'04", 145.72 FEET TO A POINT ON THE SOUTHERLY BOUNDARY OF THE AFORESAID STONE CREEK BY DEL WEBB SOLAIRE PHASE 1 AND 2; THENCE ALONG SAID SOUTHERLY BOUNDARY N9°00'00", 336.31 FEET TO THE POINT OF BEGINNING, SAID LANDS CONTAINING 41.97 ACRES, MORE OR LESS.

NOTE:
THIS PLAT IS 5 SHEETS IN TOTAL, AND ONE IS NOT COMPLETE WITHOUT THE OTHERS, FOR DEDICATION AND ACKNOWLEDGMENTS SEE SHEET 1, FOR LEGAL DESCRIPTION AND BOUNDARY DETAIL SEE SHEET 2, FOR LOTS DIMENSIONS SEE SHEETS 3, 4, AND 5.



- LEGEND:** UNLESS OTHERWISE NOTED
- N = NOT TO SCALE
 - R = RADIUS
 - L = ARC LENGTH
 - Δ = DELTA (CENTRAL ANGLE)
 - CH = CHORD DISTANCE
 - CB = CHORD BEARING
 - NO. = NUMBER
 - N = NORTHING (STATE PLANE COORDINATES)
 - E = EASTING
 - C.O.R. = CENTERLINE OF RIGHT OF WAY
 - O.R. = OFFICIAL RECORDS OF MARION COUNTY
 - R/W = RIGHT OF WAY LINE
 - LB = LICENSE BUSINESS
 - LS = LAND SURVEYOR
 - PLS = PROFESSIONAL LAND SURVEYOR
 - PG. = PAGE
 - P.B. = PLAT BOOK
 - P.T. = POINT OF TANGENCY
 - A.E. = ACCESS EASEMENT
 - D.E. = DRAINAGE EASEMENT
 - U.E. = UTILITY EASEMENT
 - AC = ACRES
 - (NR) = NOT RADIAL
 - P.S.E.U.R.A. = PRIVATE SPECIFIC EASEMENT UTILITY RESERVATION AREA
 - (8000) = SQUARE FOOTAGE OF LOT
 - (M) = PERMANENT REFERENCE MONUMENT SET 4" X 4" CONCRETE MONUMENT LB 8071
 - (M) = PERMANENT REFERENCE MONUMENT FOUND 4" X 4" CONCRETE MONUMENT
 - (M) = PERMANENT CONTROL POINT SET NAIL & DISC NO. LB 8071
 - (M) = PERMANENT CONTROL POINT FOUND NAIL & DISC NO. LB 8071



PREPARED BY: JCH CONSULTING GROUP, INC., 428 S.W. 15TH STREET, OCALA, FLORIDA 34471



JCH
CONSULTING GROUP, INC.
LAND DEVELOPMENT, SURVEYING & MAPPING
PLANNING - ENVIRONMENTAL - G.I.S.
CERTIFICATE OF AUTHORIZATION NO. LB-007
CIRENTORANGE/J. JOHNSON, P.S.M., C.F.M., L.S. 15453
40 SW 15TH STREET, OCALA, FLORIDA 34717
PHONE: (352) 469-1482 www.jch.com

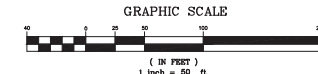
STONE CREEK BY DEL WEBB SOLAIRE PHASE 1

A PLANNED UNIT DEVELOPMENT

SECTION 1, TOWNSHIP 16 SOUTH, RANGE 20 EAST

MARION COUNTY, FLORIDA

PLAT BOOK _____, PAGE _____
SHEET 3 OF 5



- LEGEND:** UNLESS OTHERWISE NOTED
- = NOT TO SCALE
 - R = RADIUS
 - L = ARC LENGTH
 - Δ = DELTA (CENTRAL ANGLE)
 - CH = CHORD DISTANCE
 - CB = CHORD BEARING
 - NO. = NUMBER
 - N, E, S, W = NORTHING (STATE PLANE COORDINATES)
 - O.R. = OFFICIAL RECORDS OF MARION COUNTY
 - R/W = RIGHT OF WAY LINE
 - LB = LICENSE BUSINESS
 - LS = LAND SURVEYOR
 - PLS = PROFESSIONAL LAND SURVEYOR
 - P.G. = PAGE
 - P.B. = PLAT BOOK
 - P.T. = POINT OF TANGENCY
 - A.E. = ACCESS EASEMENT
 - D.E. = DRAINAGE EASEMENT
 - U.E. = UTILITY EASEMENT
 - AC = ACRES
 - (NR) = NOT RADIAL
 - P.S.E./U.R.A. = PRIVATE SPECIFIC EASEMENT / UTILITY RESERVATION AREA
 - 8,000 = SQUARE FOOTAGE OF LOT
 - = PERMANENT REFERENCE MONUMENT SET 4" X 4" CONCRETE MONUMENT LB 8071
 - = PERMANENT REFERENCE MONUMENT FOUND 4" X 4" CONCRETE MONUMENT
 - = PERMANENT CONTROL POINT SET NAIL & DISC NO. LB 8071
 - = PERMANENT CONTROL POINT FOUND NAIL & DISC NO. LB 8071



LINE	BEARING	LENGTH
L1	N13°01'35"E	9.89
L2	N57°25'34"E	25.62
L3	N11°34'26"W	22.65
L4	N22°43'51"E	5.01
L5	N22°43'51"E	56.32
L6	S07°04'18"W	9.64
L7	S42°26'23"W	28.27
L8	S42°26'23"W	10.09
L9	N68°38'22"E	41.88
L10	S20°58'48"E	0.65
L11	N23°15'08"W	3.11
L12	N23°15'08"W	4.99
L13	S11°34'26"E	10.13
L14	S11°34'26"E	12.52
L15	S11°34'26"E	22.65

CURVE TABLE					CURVE TABLE					CURVE TABLE					CURVE TABLE					CURVE TABLE					CURVE TABLE				
CURVE	LENGTH	RADIUS	DELTA	CHORD	CURVE	LENGTH	RADIUS	DELTA	CHORD	CURVE	LENGTH	RADIUS	DELTA	CHORD	CURVE	LENGTH	RADIUS	DELTA	CHORD	CURVE	LENGTH	RADIUS	DELTA	CHORD	CURVE	LENGTH	RADIUS	DELTA	CHORD
C1	99.80	225.00	025°24'52"	98.89	S77°17'34"E	C17	136.88	200.00	039°12'47"	134.22	N31°10'50"W	C29	80.55	295.00	015°38'41"	80.30	N15°25'47"W	C63	26.23	25.00	06°07'19"	25.05	N06°48'32"E	C90	41.13	525.00	004°29'19"	41.12	N13°49'06"W
C2	44.31	25.00	101°32'59"	38.73	N64°38'22"E	C18	101.91	500.00	011°40'42"	101.74	N17°24'47"W	C34	70.20	485.00	008°17'37"	70.14	N27°23'56"W	C64	23.18	25.00	05°10'48"	22.36	N63°28'52"E	C91	53.25	525.00	005°48'40"	53.23	N18°58'05"W
C3	14.14	175.00	004°37'45"	14.13	N11°33'00"E	C19	103.30	200.00	029°35'34"	102.15	N38°02'56"W	C35	20.02	75.00	019°17'33"	19.96	N30°53'54"W	C65	39.27	25.00	09°00'00"	35.36	N21°44'52"E	C92	12.63	525.00	001°22'43"	12.63	N22°33'47"W
C4	145.69	859.97	009°42'25"	145.52	S06°43'14"E	C20	127.37	360.00	020°16'16"	126.70	N42°42'34"W	C36	44.07	75.00	033°40'04"	43.44	N55°22'43"W	C66	47.59	345.00	007°54'15"	47.56	N19°18'00"W	C93	52.28	225.00	013°18'50"	52.17	N29°54'33"W
C5	202.62	320.00	036°16'43"	199.25	N05°06'46"W	C23	34.15	25.00	078°16'10"	31.56	N50°51'55"W	C37	23.28	75.00	017°47'15"	23.19	N81°06'22"W	C68	53.28	535.00	005°42'22"	53.26	N27°17'11"W	C94	51.01	225.00	012°59'20"	50.90	N43°03'38"W
C6	207.45	510.00	023°18'20"	206.02	N34°54'18"W	C24	3.37	135.00	001°25'52"	3.37	N12°26'46"W	C38	53.47	225.00	013°36'57"	53.34	N83°11'31"E	C68	11.03	535.00	001°10'52"	11.03	N23°50'34"W	C95	12.92	225.00	003°17'24"	12.92	N51°12'00"W
C7	58.25	50.00	066°44'52"	55.01	N56°37'34"W	C25	23.77	135.00	010°05'25"	23.74	N18°12'26"W	C39	37.84	225.00	009°38'11"	37.80	N71°33'58"E	C68	29.12	25.00	066°44'52"	27.51	N56°37'34"W	C96	54.39	335.00	009°18'09"	54.33	N48°11'37"W
C8	81.17	200.00	023°15'08"	80.61	N78°22'26"E	C26	21.55	115.00	010°44'17"	21.52	N28°37'16"W	C40	39.27	25.00	090°00'00"	35.36	N68°15'08"W	C67	71.02	175.00	023°15'08"	70.53	N78°22'26"E	C12	57.09	60.00	054°30'47"	54.96	N35°56'30"W
C9	136.88	200.00	039°12'47"	134.22	N70°23'37"W	C27	14.97	115.00	007°17'25"	14.96	N37°43'07"W	C61	26.99	85.00	019°11'42"	26.88	N14°09'17"W	C88	168.79	175.00	055°15'45"	162.32	N82°22'07"W	C13	50.97	60.00	048°40'29"	49.45	N87°32'09"W
C10	66.33	150.00	025°20'17"	65.60	N26°32'01"E	C28	26.99	85.00	018°11'42"	26.88	N32°20'59"W	C62	36.52	115.00	018°11'42"	36.37	N14°09'17"W	C89	70.75	175.00	023°09'49"	70.27	N23°09'20"W	C14	29.47	25.00	067°32'43"	27.79	N78°06'02"W

THIS PLAT IS 5 SHEETS IN TOTAL AND ONE IS NOT COMPLETE WITHOUT THE OTHERS. FOR DEDICATION AND ACKNOWLEDGEMENTS SEE SHEET 1. FOR LEGAL DESCRIPTION AND BOUNDARY DETAIL SEE SHEET 2. FOR LOTS DIMENSIONS SEE SHEETS 3, 4, AND 5.

PREPARED BY: JCH CONSULTING GROUP, INC., 426 SW 15TH STREET, OCALA, FLORIDA 34717

STONE CREEK BY DEL WEBB SOLAIRE PHASE 1

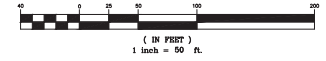
A PLANNED UNIT DEVELOPMENT

SECTION 1, TOWNSHIP 16 SOUTH, RANGE 20 EAST

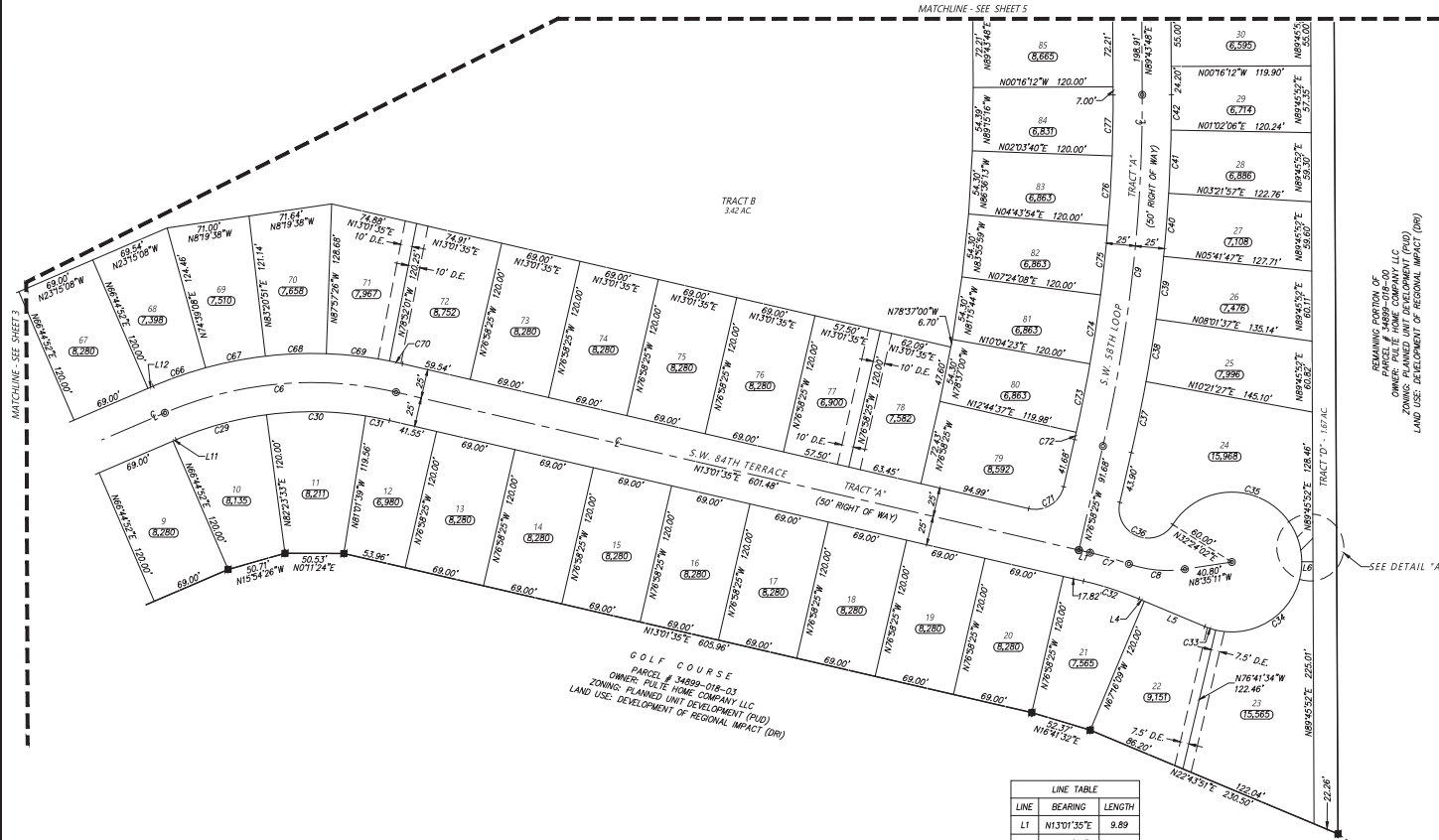
MARION COUNTY, FLORIDA



GRAPHIC SCALE



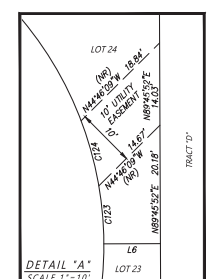
- LEGEND:** UNLESS OTHERWISE NOTED
- NOT TO SCALE
 - R = RADIUS
 - L = ARC LENGTH
 - Δ = DELTA (CENTRAL ANGLE)
 - CH = CHORD DISTANCE
 - CB = CHORD BEARING
 - NO. = NUMBER
 - N. = NORTHING (STATE PLANE COORDINATES)
 - E. = EASTING
 - C. = CENTERLINE OF RIGHT OF WAY
 - O.R. = OFFICIAL RECORDS OF MARION COUNTY
 - R.W. = RIGHT OF WAY LINE
 - LB = LICENSE BUSINESS
 - LS = LAND SURVEYOR
 - P.L.S. = PROFESSIONAL LAND SURVEYOR
 - PG. = PAGE
 - P.B. = PLAT BOOK
 - P.T. = POINT OF TANGENCY
 - A.E. = ACCESS EASEMENT
 - D.E. = DRAINAGE EASEMENT
 - U.E. = UTILITY EASEMENT
 - AC = ACRES
 - (NR) = NOT RADIAL
 - (P.S.) = PRIVATE SPECIFIC EASEMENT
 - (S.E.) = UTILITY RESERVATION AREA
 - (S.F.) = SQUARE FOOTAGE OF LOT
 - = PERMANENT REFERENCE MONUMENT SET 4" X 4" CONCRETE MONUMENT LB 8071
 - = PERMANENT REFERENCE MONUMENT FOUND 4" X 4" CONCRETE MONUMENT
 - ⊙ = PERMANENT CONTROL POINT SET NAIL & DISC NO. LB 8071
 - = PERMANENT CONTROL POINT FOUND NAIL & DISC NO. LB 8071



GOLF COURSE
PARCEL # 34899-018-03
OWNER: FULL TIME HOME COMPANY LLC
ZONING: PLANNED UNIT DEVELOPMENT (PUD)
LAND USE: DEVELOPMENT OF REGIONAL IMPACT (DRI)

CURVE TABLE					CURVE TABLE					CURVE TABLE				
CURVE	LENGTH	RADIUS	DELTA	BEARING	CURVE	LENGTH	RADIUS	DELTA	BEARING	CURVE	LENGTH	RADIUS	DELTA	BEARING
C6	202.62	320.00	036°16'43"	N05°06'46"W	C36	70.09	25.00	160°37'33"	N22°42'49"E	C70	11.40	345.00	001°53'36"	N12°04'47"E
C7	34.76	320.00	006°13'25"	N16°08'17"E	C37	62.18	1335.00	002°40'08"	N78°18'29"W	C71	39.27	25.00	090°00'00"	N31°58'25"W
C8	48.58	100.00	027°50'10"	N05°19'54"E	C38	54.30	1335.00	002°19'50"	N80°48'28"W	C72	6.34	1285.00	000°16'58"	N77°06'54"W
C9	304.00	1310.00	0131°47'	N03°37'18"W	C39	54.30	1335.00	002°19'50"	N83°08'18"W	C73	59.90	1285.00	002°40'14"	N78°35'30"W
C20	80.55	295.00	015°38'41"	N15°25'47"W	C40	54.30	1335.00	002°19'50"	N85°28'08"W	C74	59.90	1285.00	002°40'14"	N81°54'44"W
C29	85.37	295.00	016°34'48"	N10°04'57"E	C41	54.30	1335.00	002°19'50"	N87°47'59"W	C75	59.90	1285.00	002°40'14"	N83°55'59"W
C31	20.87	295.00	004°03'14"	N10°59'58"E	C42	30.41	1335.00	001°18'18"	N89°37'03"W	C76	59.90	1285.00	002°40'14"	N86°36'13"W
C32	49.96	295.00	009°42'16"	N17°52'43"E	C66	47.59	345.00	007°54'15"	N19°18'00"W	C77	52.28	1285.00	002°19'51"	N89°06'16"W
C33	9.87	60.00	009°25'25"	N18°01'08"E	C67	52.36	345.00	008°41'43"	N11°00'01"W	C123	9.93	60.00	009°29'09"	N85°01'18"E
C34	108.43	60.00	103°32'34"	N38°27'51"W	C68	52.36	345.00	008°41'43"	N02°18'18"W	C124	11.51	60.00	010°59'39"	N74°46'54"E
C35	154.32	60.00	147°21'50"	N16°04'57"E	C69	54.74	345.00	009°05'26"	N06°15'17"E					

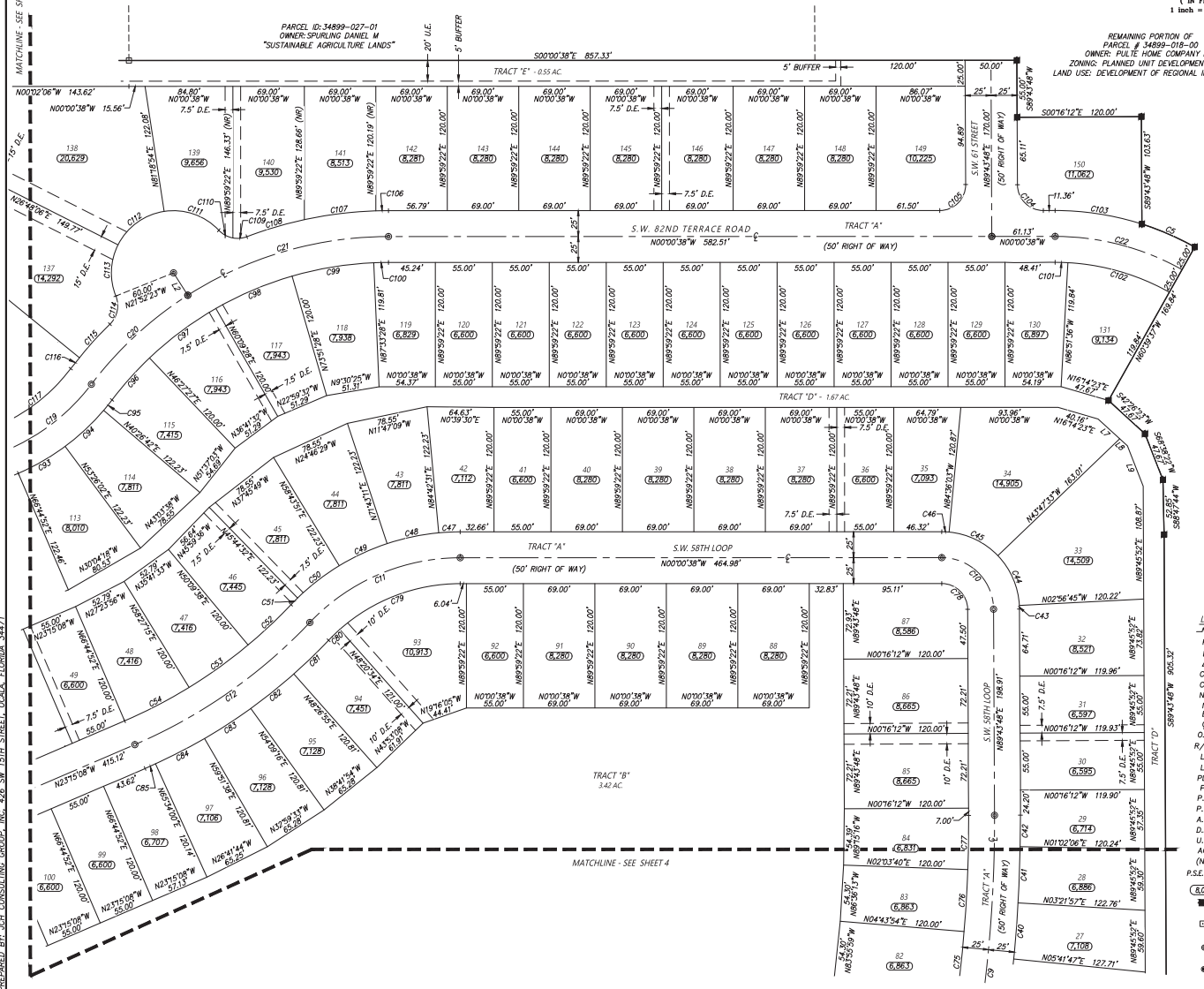
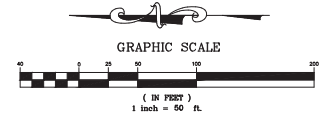
LINE TABLE		
LINE	BEARING	LENGTH
L1	N13°01'35"E	9.89
L2	N57°25'34"E	25.62
L3	N11°34'26"W	22.65
L4	N22°43'51"E	5.01
L5	N22°43'51"E	56.32
L6	S01°40'08"E	9.64
L7	S42°26'23"W	28.27
L8	S42°26'23"W	10.09
L9	N68°38'22"E	41.88
L10	S20°58'48"E	0.65
L11	N23°15'08"W	3.11
L12	N23°15'08"W	4.99
L13	S11°34'26"E	10.13
L14	S11°34'26"E	12.52
L15	S11°34'26"E	22.65



NOTE: THIS PLAT IS 5 SHEETS IN TOTAL, AND ONE IS NOT COMPLETE WITHOUT THE OTHERS, FOR DEDICATION AND ACKNOWLEDGMENTS SEE SHEET 1, FOR LEGAL DESCRIPTION AND BOUNDARY DETAIL SEE SHEET 2, FOR LOTS DIMENSIONS SEE SHEETS 3, 4, AND 5.

STONE CREEK BY DEL WEBB SOLAIRE PHASE 1

A PLANNED UNIT DEVELOPMENT
SECTION 1, TOWNSHIP 16 SOUTH, RANGE 20 EAST
MARION COUNTY, FLORIDA



LINE TABLE

LINE	BEARING	LENGTH
L1	N131°31'57\"	9.89
L2	N57°25'34\"	25.62
L3	N11°34'26\"	22.65
L4	N22°43'51\"	5.01
L5	N22°43'51\"	56.32
L6	S0°14'08\"	9.64
L7	S42°26'23\"	28.27
L8	S42°26'23\"	41.88
L9	N68°38'22\"	41.88
L10	S20°58'48\"	0.65
L11	N23°15'08\"	3.11
L12	N23°15'08\"	4.99
L13	S11°34'26\"	10.13
L14	S11°34'26\"	12.52
L15	S11°34'26\"	22.65

- LEGEND:** UNLESS OTHERWISE NOTED
- NOT TO SCALE
 - R = RADIUS
 - L = ARC LENGTH
 - Δ = DELTA (CENTRAL ANGLE)
 - CH = CHORD DISTANCE
 - CB = CHORD BEARING
 - NO. = NUMBER
 - N.P. = NORTHING (STATE PLANE COORDINATES)
 - E. = EASTING (STATE PLANE COORDINATES)
 - C.L. = CENTERLINE OF RIGHT OF WAY
 - O.R. = OFFICIAL RECORDS OF MARION COUNTY
 - R/W = RIGHT OF WAY LINE
 - LB = LICENSE BUSINESS
 - PLS = LAND SURVEYOR
 - PLS = PROFESSIONAL LAND SURVEYOR
 - POS. = PAGE
 - P.B. = PLAT BOOK
 - P.T. = POINT OF TANGENCY
 - A.E. = ACCESS EASEMENT
 - D.E. = DRAINAGE EASEMENT
 - U.E. = UTILITY EASEMENT
 - AC = ACRES
 - (NR) = NOT RADIAL
 - P.S.E.U.R.A. = PRIVATE SPECIFIC EASEMENT UTILITY RESERVATION AREA
 - (E.000) = SQUARE FOOTAGE OF LOT
 - = PERMANENT REFERENCE MONUMENT LB 8071
 - = PERMANENT REFERENCE MONUMENT FOUND 4" x 4" CONCRETE MONUMENT LB 8071
 - = PERMANENT CONTROL POINT
 - = PERMANENT CONTROL POINT SET NAIL & DISC NO. LB 8071
 - = PERMANENT CONTROL POINT FOUND NAIL & DISC NO. LB 8071

CURVE	LENGTH	RADIUS	DELTA	CHORD	BEARING
C5	55.70	275.00	011°36'19\"	55.61	S23°32'14\"
C9	304.00	1310.00	0131°74'27\"	303.32	N83°37'18\"
C10	78.31	50.00	089°44'27\"	70.55	N44°51'35\"
C11	162.48	200.00	046°32'50\"	158.05	N231°70'37\"
C12	207.45	510.00	0231°82'00\"	206.02	N34°54'16\"
C19	103.30	200.00	029°35'34\"	102.15	N38°02'55\"
C20	127.37	360.00	020°16'16\"	126.70	N42°42'34\"
C21	204.60	360.00	032°33'47\"	201.86	N161°32'57\"
C22	128.07	250.00	029°21'01\"	126.67	N14°39'52\"
C40	54.30	1335.00	002°19'50\"	54.30	N85°28'08\"
C41	54.30	1335.00	002°19'50\"	54.30	N87°47'59\"
C42	30.41	1335.00	001°18'18\"	30.41	N89°37'03\"
C43	3.50	75.00	002°40'34\"	3.50	N88°23'32\"
C44	53.47	75.00	040°50'48\"	52.34	N66°37'51\"
C45	53.42	75.00	040°48'29\"	52.34	N25°48'12\"
C46	7.08	75.00	005°24'35\"	7.08	N02°41'40\"
C47	20.74	225.00	005°16'51\"	20.74	N02°59'04\"
C48	51.01	225.00	012°59'20\"	50.90	N11°47'09\"
C49	51.01	225.00	012°59'20\"	50.90	N24°26'29\"
C50	51.01	225.00	002°40'14\"	50.90	N37°45'49\"
C51	9.03	225.00	002°18'00\"	9.03	N45°24'28\"
C52	56.87	485.00	060°43'06\"	56.84	N43°11'55\"
C53	70.20	485.00	008°17'37\"	70.14	N35°41'31\"
C54	70.20	485.00	008°17'37\"	70.14	N27°23'56\"
C75	59.90	1285.00	002°40'14\"	59.89	N83°55'59\"
C76	59.90	1285.00	002°40'14\"	59.89	N86°36'13\"
C77	52.28	1285.00	002°19'51\"	52.27	N89°06'16\"
C78	39.16	25.00	089°44'27\"	35.28	N44°51'35\"
C79	127.20	175.00	041°38'48\"	124.42	N02°50'27\"
C80	14.97	175.00	040°54'02\"	14.96	N44°06'27\"
C81	46.75	535.00	005°00'23\"	46.73	N44°03'17\"
C82	53.28	535.00	005°42'22\"	53.26	N38°41'54\"
C83	53.28	535.00	005°42'22\"	53.26	N32°59'33\"
C84	53.28	535.00	005°42'22\"	53.26	N27°17'11\"
C85	11.03	535.00	001°10'52\"	11.03	N23°50'34\"
C93	52.28	225.00	013°18'50\"	52.17	N29°54'33\"
C94	51.01	225.00	012°59'20\"	50.90	N43°03'38\"
C95	12.92	225.00	003°17'24\"	12.92	N51°21'00\"
C96	54.39	335.00	009°18'09\"	54.33	N48°11'37\"
C97	80.10	335.00	013°42'00\"	79.91	N36°41'32\"
C98	80.10	335.00	013°42'00\"	79.91	N22°59'32\"
C99	80.10	335.00	013°42'00\"	79.91	N09°17'32\"
C100	14.22	335.00	002°25'54\"	14.22	N01°13'35\"
C101	12.37	225.00	003°09'02\"	12.37	N01°33'53\"
C102	102.89	225.00	026°11'59\"	101.93	N16°14'23\"
C103	85.17	275.00	017°44'43\"	84.83	N08°51'47\"
C104	39.16	25.00	089°44'27\"	35.28	N44°51'35\"
C105	39.38	25.00	090°15'33\"	35.44	N45°08'25\"
C106	12.21	385.00	001°49'04\"	12.21	N00°55'10\"
C107	69.61	385.00	010°21'35\"	69.52	N07°00'30\"
C108	58.00	385.00	008°37'53\"	57.94	N16°30'14\"
C109	13.66	25.00	031°18'53\"	13.49	N05°09'44\"
C110	15.81	25.00	036°13'50\"	15.55	N28°36'37\"
C111	58.03	60.00	065°24'38\"	55.79	N19°01'13\"
C112	57.09	60.00	054°30'47\"	54.96	N35°56'30\"
C113	50.97	60.00	048°40'29\"	49.45	N87°32'09\"
C114	29.47	25.00	067°32'43\"	27.79	N78°06'02\"
C115	43.77	385.00	006°30'50\"	43.75	N47°35'05\"
C116	13.46	385.00	002°00'11\"	13.46	N51°50'36\"
C117	90.39	175.00	029°35'34\"	89.38	N38°02'55\"

NOTE: THIS PLAT IS 5 SHEETS IN TOTAL, AND ONE IS NOT COMPLETE WITHOUT THE OTHERS. FOR DECISION AND ACKNOWLEDGEMENTS SEE SHEET 1, FOR LEGAL DESCRIPTION AND BOUNDARY DETAIL SEE SHEET 2, FOR LOTS DIMENSIONS SEE SHEETS 3, 4, AND 5.

PREPARED BY: JCH CONSULTING GROUP, INC. 428 SW 15TH STREET, OCALA, FLORIDA 34701