

ANNULLED AND/OR VACATED, IN PART OR WHOLE,
BY BOARD OF COUNTY COMMISSION RESOLUTION
NUMBER 78-2-151, RECORDED IN OFFICIAL
RECORD BOOK 407, PAGE 237.

ANNULLED AND/OR VACATED, IN PART OR WHOLE,
BY BOARD OF COUNTY COMMISSION RESOLUTION
NUMBER 80-2-31, RECORDED IN OFFICIAL
RECORD BOOK 1031, PAGE 1044.

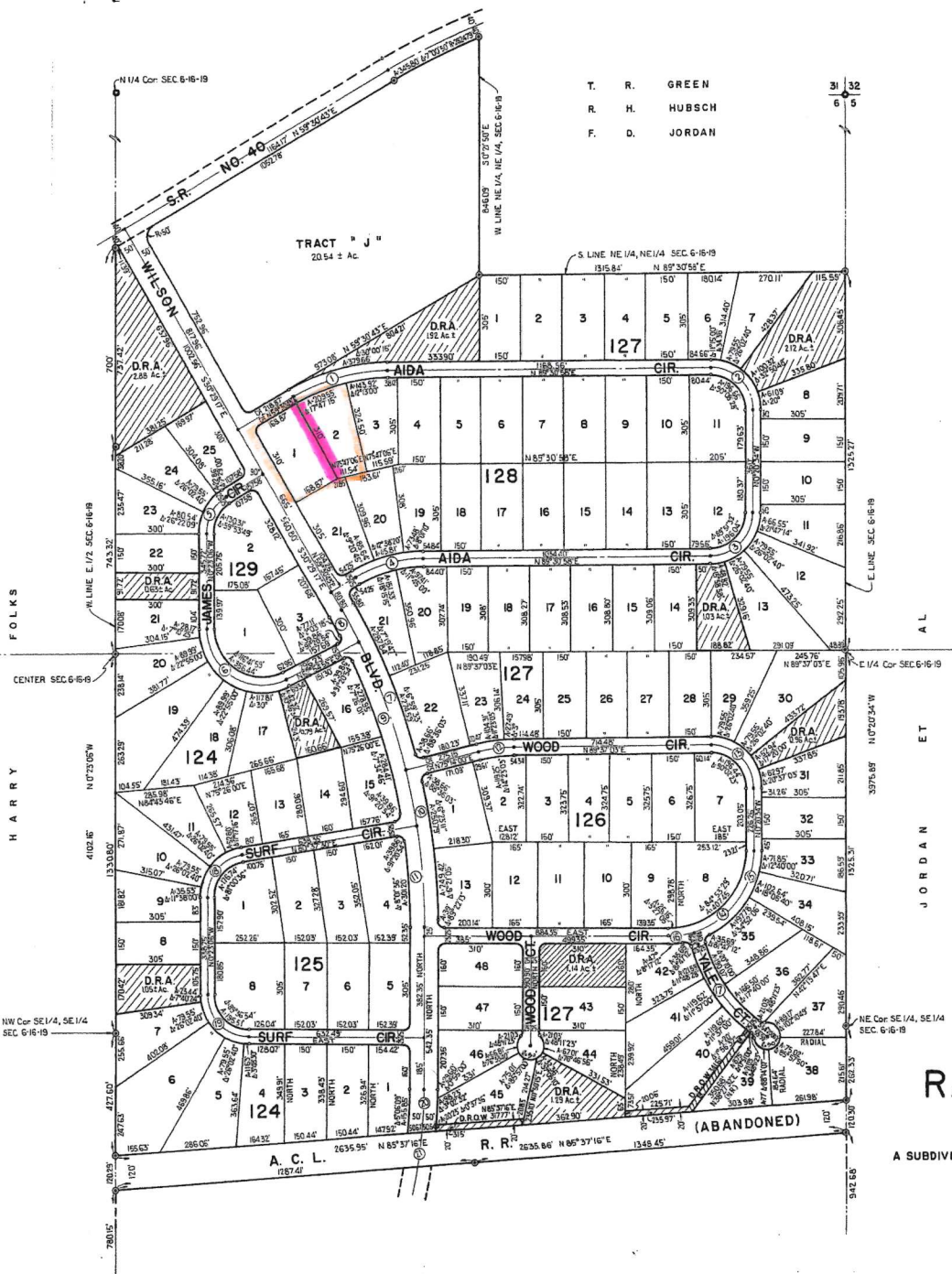
ANNULLED AND/OR VACATED, IN PART OR WHOLE,
BY BOARD OF COUNTY COMMISSION RESOLUTION
NUMBER 83-2-11, RECORDED IN OFFICIAL
RECORD BOOK 1141, PAGE 449.

ANNULLED AND/OR VACATED, IN PART OR WHOLE,
BY BOARD OF COUNTY COMMISSION RESOLUTION
NUMBER 84-2-16, RECORDED IN OFFICIAL
RECORD BOOK 587, PAGE 256.

ANNULLED AND/OR VACATED, IN PART OR WHOLE,
BY BOARD OF COUNTY COMMISSION RESOLUTION
NUMBER 88-2-17, RECORDED IN OFFICIAL
RECORD BOOK 927, PAGE 261.

NOTICE: There may be additional
restrictions that are not recorded
on this plat that may be found in
the public records of this County.

C CURVE DATA					
CURVE NO.	R	Δ	A	C'	C.B.
(1)	700'	30°00'15"	366.57'	362.40'	N74°30'51"E
(2)	150'	90°08'28"	235.99'	212.39'	S45°24'48"E
(3)	150'	89°51'32"	235.25'	211.87'	N44°35'12"E
(4)	500'	30°00'15"	261.84'	258.85'	N74°30'51"E
(5)	150'	59°53'49"	156.81'	149.77'	N29°33'49"E
(6)	200'	116°41'59"	407.36'	340.51'	S57°57'54"E
(7)	2200'	15°43'17"	603.66'	601.77'	N22°37'39"W
(8)	"	3°24'12"	130.68'	130.66'	N28°47'11"W
(9)	"	17°42'35"	680.04'	677.30'	N18°13'48"W
(10)	"	14°46'00"	567'	365.43'	N7°23'00"W
(11)	"	9°22'30"	359.97'	359.57'	N4°51'15"W
(12)	500'	14°23'03"	125.53'	125.20'	N82°25'32"E
(13)	150'	90°02'23"	235.72'	212.20'	S45°21'46"E
(14)	300'	90°20'34"	473.03'	425.53'	N44°49'43"E
(15)	300'	73°50'34"	386.69'	360.43'	N36°34'43"E
(16)	300'	16°30'00"	86.39'	86.10'	N81°45'00"E
(17)	565'	37°50'00"	373.08'	366.34'	S35°25'00"E
(18)	150'	81°00'36"	212.08'	194.85'	N40°07'12"E
(19)	150'	89°36'54"	234.61'	211.42'	S45°11'33"E
(20)	1800'	4°50'12"	151.95'	151.91'	N2°25'06"E
(21)	1800'	3°53'39"	122.34'	122.31'	N6°47'02"E



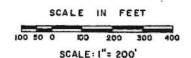
NOTE: All lot lines are 90° or radial to streets,
unless otherwise shown.

RAINBOW SPRINGS

A SUBDIVISION IN SECTIONS 10, 11, 12, 13, 14, 15, 22, 23 AND 24, T16S, R18E
AND SECTIONS 6, 7, 8, 18 AND 19, T16S, R19E

MARION COUNTY, FLORIDA

SHEET 20 OF 20 SHEETS



118 LOTS THIS SHEET