

## PARKS & RECREATION DEPARTMENT

BELLEVUE SPORTSPLEX



### Belleview Sportsplex

#### Topics for Discussion

- Park overview and finances
- History of Marion County's Involvement
- Projects at the park
- Existing Conditions and Needs
- Park Master Plan



### Park Data

- **Total Park Size:** 80.64 acres
- **Annual Average Visitation:** 313,706
- **Amenities:**
  - 7 Baseball fields
  - 7 Softball fields
  - 3 Soccer fields
  - 2 Football fields
  - 2 Basketball courts
  - 2 Tennis courts (multi-striped for pickleball)
  - Open batting cages
  - 3 Small playgrounds
- **Annual Operating Cost:** \$182,701



## Budget and Expenditures

### Annual Personnel and Operating Budget:

- **Personnel\*:** 2 Full-time Employees
  - Budgeted: \$136,219
  - Actual: \$93,759
- **Seasonal Staffing\*:**
  - Budgeted: \$25,376
  - Actual: \$2,386
- **Operating\*:**
  - Budgeted: \$133,113
  - Actual: \$109,412

\* Average over a five-year period



## History of Agreements

### 1994

- Marion County and City of Belleview enter first Interlocal Agreement.
- Marion County acquires Perry Property (63.64 acres) for \$288,930 through Pennies for Parks bond and commits to making \$250,000 in improvements at park.

### 2009

- **5<sup>th</sup> Amendment** of Agreement includes payment schedule from the City to the County.

First Four (4) Years	Personal Services/ Operating Expenses (City)	Capital Outlay (City)	Capital Outlay (County)	Total
July 1, 2009 (pro-rated)	\$56,573	\$41,524	\$59,976	<b>\$158,073</b>
October 1, 2009	\$201,464			<b>\$201,464</b>
October 1, 2010	\$202,491	\$47,250*	\$47,250*	<b>\$296,991</b>
October 1, 2011	\$208,122	\$19,750*	\$19,750*	<b>\$247,622</b>
*50/50 match				

## History of Agreements



### 2011

- **6<sup>th</sup> Amendment** of Agreement stipulated that budget savings be utilized for capital improvements as outlined in the Departments 5-Year CIP.

### 2012

- **7<sup>th</sup> Amendment** of Agreement changes operation of the park to the County, including 17 acres owned by the City.
- Entitles County to all revenue generated at the park.
- Fee schedule established in 2009 in 5<sup>th</sup> Amendment removed and the \$50,000 annual payment from the City to the County established.
- Term of agreement runs to 2039.

## Completed Projects



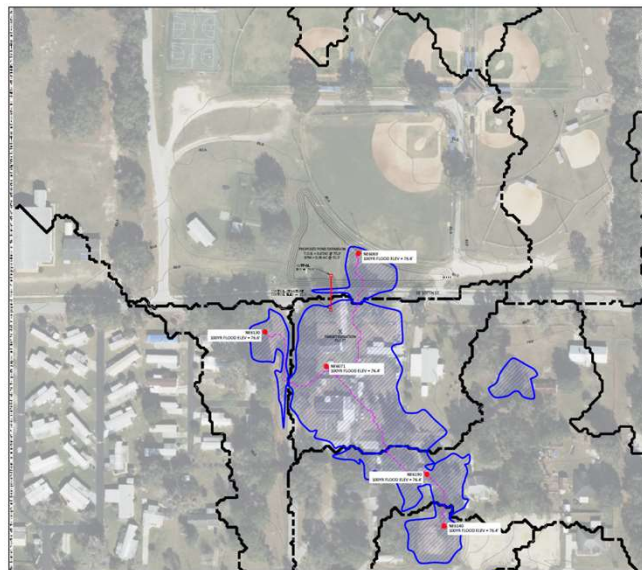
### Small Projects Completed

- Bathrooms at soccer fields
- Resurfaced/striped tennis courts and basketball courts
- Renovated dugouts at baseball fields
- Steel shelter/pavilion at softball fields
- More general upkeep, repairs and maintenance



# Existing Conditions and Needs

- Stormwater facilities and offsite flooding
- Paved parking
- Handicap and Pedestrian Accessibility
- Concession/restroom buildings
- Baseball and softball field dimensions
- Electrical issues (direct burial)
- Wear and tear



**LEGEND**

- \*\*\*\*\* BOUNDARY
- ICR LINE
- ICR NODE
- 2008 ZONE
- FLOOD PLAIN

**NOTES:**  
 ALL UNRECORDED INFORMATION HAS BEEN OBTAINED FROM THE CITY RECORDS AND MARION COUNTY RECORDS. UNRECORDED INFORMATION IS SHOWN AS IS AND IS NOT GUARANTEED BY MARION COUNTY, FLORIDA.

**Kimley-Horn**

**BELLEVUE SPORTSPLEX CITY OF BELLEVUE**

**DRAINAGE EXHIBIT**

**EX-01**

## Existing Conditions and Needs



## Existing Conditions and Needs



# Existing Conditions and Needs



# Major Projects



Bellevue Sportsplex - Master Plan Projects		
Baseball field complex improvements; new quad/star with restroom/concession	\$	4,000,000
Softball field complex improvements; re-align fields with new baseball quad/star	\$	3,500,000
Soccer field renovations; phased re-grading and sprigging	\$	120,000
Renovation of Field 14 for adult league play and field rentals	\$	45,000
Football concessions/restroom building; storage building	\$	1,500,000
Four smaller playgrounds; baseball, softball, soccer and football areas	\$	240,000
Parking/ vehicular circulation improvements	\$	750,000
Maintenance facility; includes storage bins, shop, office space, pole barn	\$	475,000
Convert lighting to all fields to LED	\$	2,000,000
	<b>Subtotal:</b>	<b>\$ 12,630,000</b>
Bellevue Sportsplex - Redevelopment of City Parcel		
Landfill remediation and excavation for DRA	\$	1,750,000
Courts; pickleball, tennis, sand volleyball, basketball	\$	325,000
Splashpad	\$	400,000
Restroom; 4-stall each side	\$	325,000
Parking area and sidewalks	\$	460,000
Large destination playground	\$	750,000
	<b>Subtotal:</b>	<b>\$ 4,010,000</b>
	<b>TOTAL:</b>	<b>\$ 16,640,000</b>

# Bellevue Sportsplex Discussion & Questions



## Discussion & Questions

