



PUD/RESIDENTIAL APPLICATION IMPACTS TO FIRE RESCUE SERVICES

COVENTRY/15700 SE 73RD AVENUE/ PARCEL # 47667-000-00



Coventry- 15700 SE 73rd Ave, Ocala, FL 34482



- The request is to modify a 55-acre parcel, originally zoned as a A-1 General Agriculture for the purpose of a residential subdivision. The concept plan as provided, shows a change from General Agriculture to a residential development with a maximum proposed residential units of 175.

Common Definitions Used By Fire Rescue



- ISO- The ISO (Insurance Services Office) rating is a crucial assessment for fire departments in the United States, directly influencing both the department's operations and the community it serves.
 - The ISO's Public Protection Classification (PPC) program evaluates a fire department's ability to protect its community from fire-related incidents, and assigns a rating that can affect property insurance rates for homes and businesses within the department's jurisdiction.
 - MCFR has a ISO rating of 2/2Y
- NFPA-The National Fire Protection Association (NFPA) is a global nonprofit organization devoted to eliminating death, injury, property, and economic loss due to fire, electrical, and related hazards.
 - Founded in 1896, the NFPA develops and publishes more than 300 codes and standards that are designed to minimize the risk and effects of fire and other hazards.

Common Definitions Used By Fire Rescue



- Response Availability – indicates how often multiple emergency calls occur at the same time within our service area. As the number of overlapping incidents increases, our ability to respond to new calls is reduced.
- This is expressed as a percentage:

Percentage	Service Demand
0–10% (Green)	Normal Operations – calls are handled promptly.
11–20% (Yellow)	Increased Demand – response may be delayed during busy periods.
21–30% or higher (Red)	High Demand – staffing and resources may not keep pace with call volume.

Common Definitions Used By Fire Rescue



- Workload – Workload is a critical factor in evaluating unit performance and operational demands. While it can be measured by simply counting the number of incidents a unit handles over a period, this approach doesn't reflect the complexity or duration of each call.
- A more meaningful assessment considers how often calls for service overlap, placing simultaneous demands on available units. Overlapping incidents can stretch resources thin, reduce response availability, and increase reliance on neighboring units. This measure provides a clearer view of the actual strain on personnel and apparatus, especially during periods of high call volume.
- It's important to note that workload assessments based solely on incident volume do not capture the full scope of a unit's responsibilities, such as training, equipment maintenance, pre-incident planning, and community outreach.

Common Standards Governing Fire Rescue

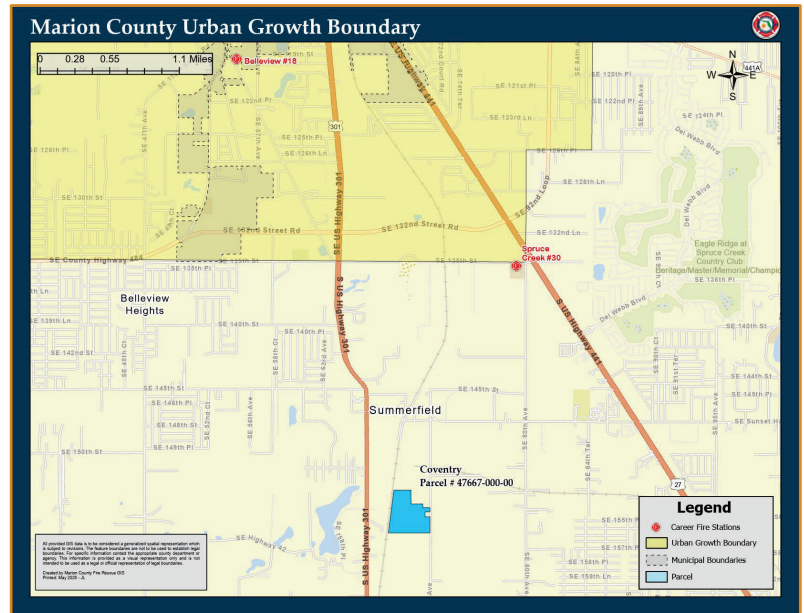


- NFPA 1061: Standard for Public Safety Telecommunications Personnel Professional Standards Qualifications
- NFPA 1201: Standard for Providing Fire and Emergency Services to the Public
- NFPA 1225, Standard for Emergency Services Communications
- NFPA 1660: Standard for Emergency, Continuity, and Crisis Management: Preparedness, Response, and Recovery
- NFPA 1620: Standard for Pre-Incident Planning
- NFPA 1710, Standard for the Organization and Deployment of Fire Suppression Operations, Emergency Medical Operations, and Special Operations to the Public by Career Fire Departments.
- NFPA 1720, Standard for the Organization and Deployment of Fire Suppression Operations, Emergency Medical Operations, and Special Operations to the Public by Volunteer Fire Departments.

URBAN GROWTH BOUNDARY

THE PARCEL IS OUTSIDE THE URBAN GROWTH BOUNDARY.

THIS PARCEL IS IN COMMISSION DISTRICT 3.



Empowering Marion for Success

7

CLOSEST FIRE STATION LOCATIONS

THE FOLLOWING FIRE STATIONS ARE LOCATED NEAR THE PARCEL FOR CONSIDERATION:

FIRE STATION 10, 2.1 ROAD MILES

FIRE STATION 30, 3.0 ROAD MILES

FIRE STATION 18, 4.7 ROAD MILES

FIRE STATION 27, 7.8 ROAD MILES

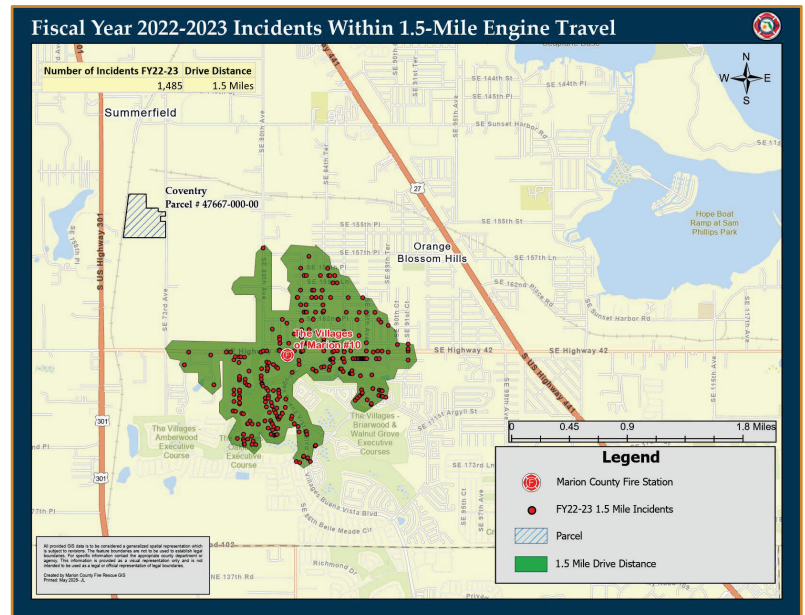


Empowering Marion for Success

8

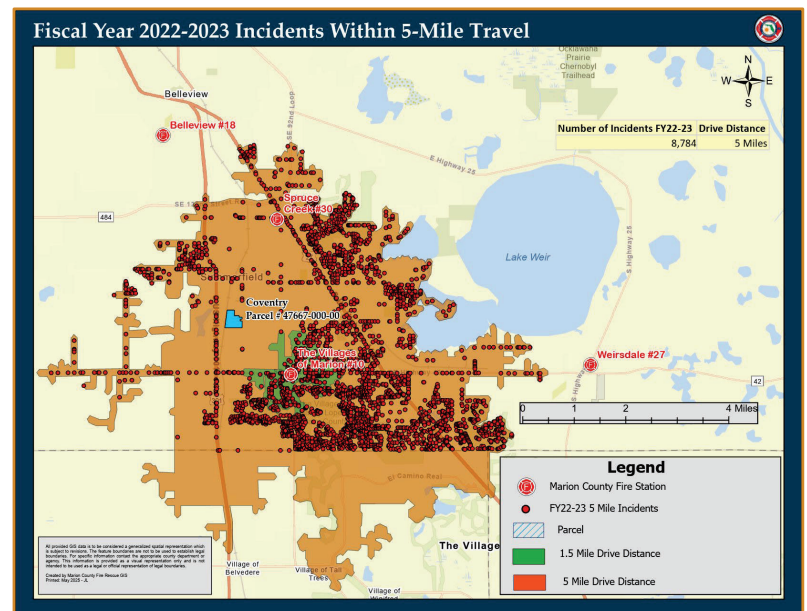
FY22/23 INCIDENTS WITHIN 1.5-MILE ENGINE TRAVEL

THERE WERE 1,485 CALLS FOR SERVICE WITHIN THE 1.5 MILE ENGINE TRAVEL FOR FIRE STATION 10.



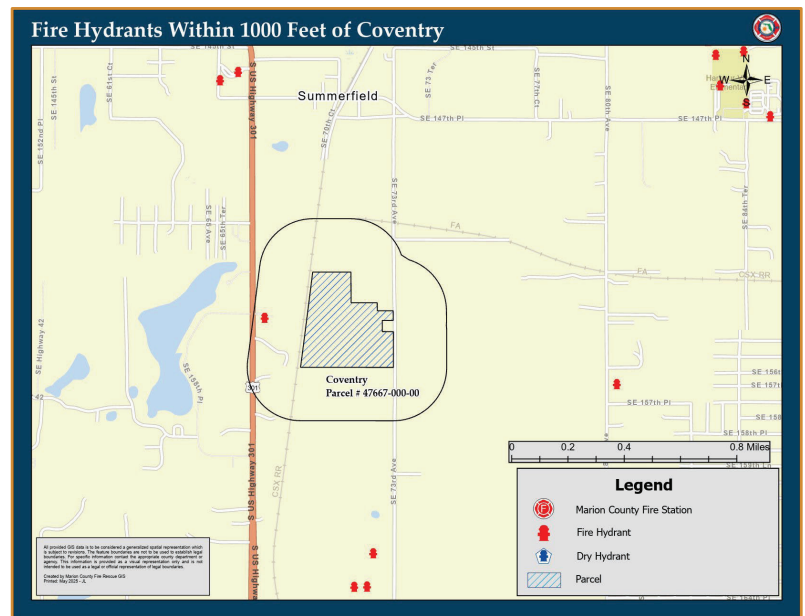
FY22/23 INCIDENTS WITHIN 5-MILE TRAVEL

THERE WERE 8,784 CALLS FOR SERVICE WITHIN THE 5 MILE TRAVEL FOR FIRE STATION 10.



FIRE HYDRANTS WITHIN 1000 FEET

THIS PARCEL IS WITHIN 1,000 FEET OF
1 FIRE HYDRANT AND 0 DRY
HYDRANTS.



Empowering Marion for Success

11

Closest Fire Suppression Response



- Station 10 (The Villages)
 - 4-minute travel time
 - Overlapping Incidents: FY22/23 suppression unit overlap rate: 11.56% – (Yellow)
 - 4,255 incidents/unit (Above Trigger Point)
- Station 30 (Spruce Creek)
 - 5-minute travel time
 - Overlapping Incidents: FY22/23 suppression unit overlap rate: 7.62% – (Green)
 - 2,415 incidents/unit (Above Trigger Point)
- Station 18 (Bellevue)
 - 9-minute travel time
 - Overlapping Incidents: FY22/23 suppression unit overlap rate: 10.34% – (Green)
 - 1,765 incidents/unit (Engine and Tower)
- Station 27 (Weirsdale)
 - 13-minute travel time
 - Overlapping Incidents: FY22/23 suppression unit overlap rate: 6.63% – (Green)
 - 1,263 incidents/unit

Note: non-transport units with greater than 2,000 incidents is measure to consider adding additional resources.

Closest Ambulance Response

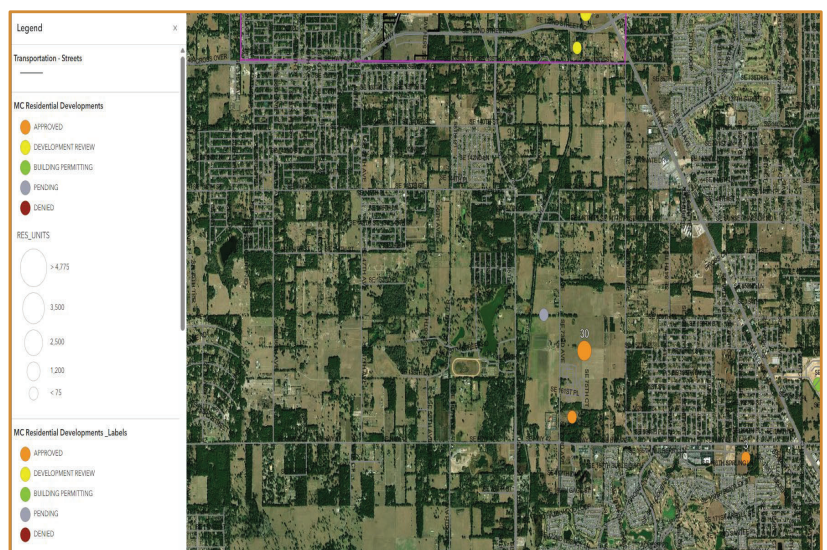


- Station 10 (The Villages)
 - 4-minute travel time
 - Overlapping Incidents: FY22/23 transport unit overlap rate: 7.34% – (Green)
 - 3,013 incidents/unit (Above Trigger Point)
 - 2 Transport Units
- Station 30 (Spruce Creek)
 - 5-minute travel time
 - Overlapping Incidents: FY22/23 transport unit overlap rate: 1.69% – (Green)
 - 1,644 incidents/unit
 - 2 Transport Units
- Station 18 (Bellevue)
 - 9-minute travel time
 - Overlapping Incidents: FY22/23 transport unit overlap rate: 5.63% – (Green)
 - 2,212 incidents/unit
 - 2 transport Units
- Station 27 (Weirsdale)
 - 13-minute travel time
 - Overlapping Incidents: FY22/23 transport unit overlap rate: 20.47% – (Red)
 - 2,321 incidents/unit
 - 1 transport Unit

Note: transport units with greater than 2,500 incidents is measure to consider adding additional resources.

OTHER RESIDENTIAL DEVELOPMENTS

THERE WERE 6 OTHER DEVELOPMENTS CONSIDERING FIRE RESCUE SERVICE LEVELS IN ADDITION TO THIS REQUEST.



Current Status of Fire Rescue Service in the Area.



- There are no additional resources planned for the area.

Recommendations from Fire Rescue



- If approved, additional resources are warranted to handle increased demand from the proposed parcel.
 - The suppression units from two of the four closest fire stations are above the adopted capacity limits currently and additional growth will exacerbate these numbers.
 - The transport units from one of the four closest fire stations are above the adopted capacity limits currently and additional growth will exacerbate these numbers.
 - Additional Suppression Unit is warranted.
 - Additional Transport Units is warranted.



QUESTIONS?