



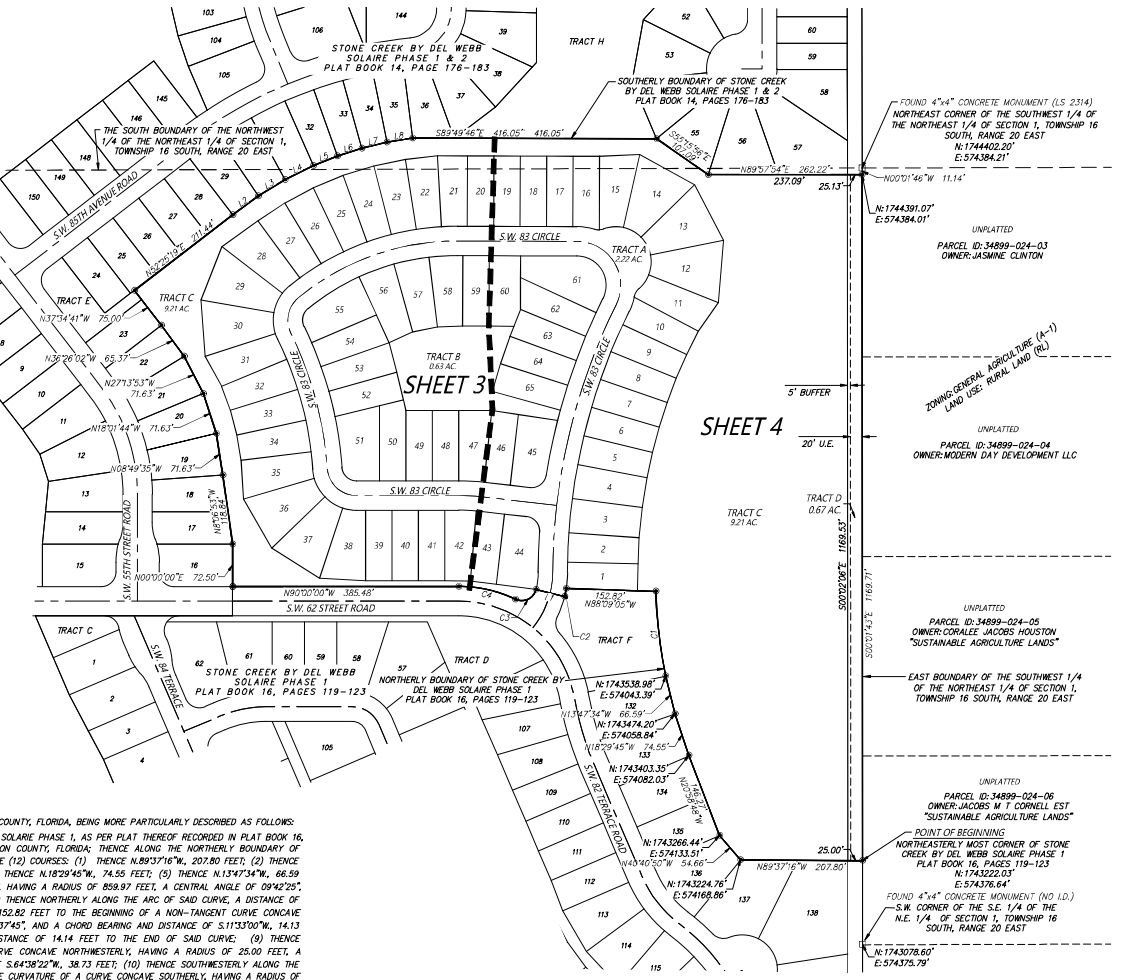
STONE CREEK BY DEL WEBB SUNDANCE PHASE 4

A PLANNED UNIT DEVELOPMENT
SECTION 1, TOWNSHIP 16 SOUTH, RANGE 20 EAST
MARION COUNTY, FLORIDA

NOTES:
THIS PLAT IS 4 SHEETS IN TOTAL, AND ONE IS NOT COMPLETE WITHOUT THE OTHERS. FOR DEDICATION AND ACKNOWLEDGMENTS SEE SHEET 1 FOR LEGAL DESCRIPTION AND BOUNDARY DETAIL. SEE SHEET 2, FOR LOTS DIMENSIONS SEE SHEETS 3 AND 4.

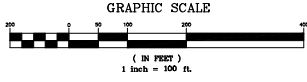
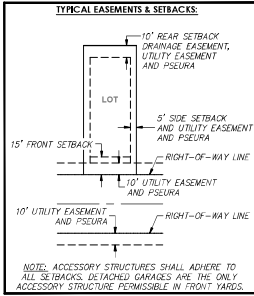
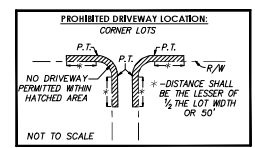
- LEGEND** UNLESS OTHERWISE NOTED
- NOT TO SCALE
 - R = RADIUS
 - L = ARC LENGTH
 - Δ = DELTA (CENTRAL ANGLE)
 - CH = CHORD DISTANCE
 - CB = CHORD BEARING
 - NOL = NUMBER
 - N, E = NORTHING (STATE PLANE COORDINATES)
 - S, W = SOUTHERING (STATE PLANE COORDINATES)
 - C = CENTERLINE OF RIGHT OF WAY
 - O.R. = OFFICIAL RECORDS OF MARION COUNTY
 - R/W = RIGHT OF WAY LINE
 - LB = LICENSE BUSINESS
 - LS = LAND SURVEYOR
 - PLS = PROFESSIONAL LAND SURVEYOR
 - PG. = PAGE
 - P.B. = PLAT BOOK
 - P.T. = POINT OF TANGENCY
 - A.E. = ACCESS EASEMENT
 - D.E. = DRAINAGE EASEMENT
 - U.E. = UTILITY EASEMENT
 - AC = ACRES
 - (NR) = NOT RADIAL
 - P.S.E./U.A. = PRIVATE SPECIFIC EASEMENT UTILITY RESERVATION AREA SQUARE FOOTAGE OF LOT
- PERMANENT REFERENCE MONUMENT FOUND 4" x 4" CONCRETE MONUMENT (AS NOTED)
 - PERMANENT CONTROL POINT SET NAIL & DISC NO. LB 8071
 - PERMANENT CONTROL POINT FOUND NAIL & DISC NO. LB 8071

DESCRIPTION:
A PORTION OF SECTION 1, TOWNSHIP 16 SOUTH, RANGE 20 EAST, MARION COUNTY, FLORIDA, BEING MORE PARTICULARLY DESCRIBED AS FOLLOWS:
BEGIN AT THE MOST NORTHEAST CORNER OF STONE CREEK BY DEL WEBB SOLAIRE PHASE 1, AS PER PLAT THEREOF RECORDED IN PLAT BOOK 16, PAGES 119 THROUGH 123, INCLUSIVE, OF THE PUBLIC RECORDS OF MARION COUNTY, FLORIDA; THENCE ALONG THE NORTHERLY BOUNDARY OF SAID STONE CREEK BY DEL WEBB SOLAIRE PHASE 1 THE FOLLOWING TWELVE (12) COURSES: (1) THENCE N.89°37'16"W, 207.80 FEET; (2) THENCE N.40°40'50"W, 54.66 FEET; (3) THENCE N.20°58'48"W, 146.27 FEET; (4) THENCE N.18°29'45"W, 74.55 FEET; (5) THENCE N.13°43'34"W, 66.59 FEET TO THE BEGINNING OF A NON-TANGENT CURVE CONVEXE EASTERLY, HAVING A RADIUS OF 859.97 FEET, A CENTRAL ANGLE OF 09°42'25", AND A CHORD BEARING AND DISTANCE OF N.06°43'14"W, 145.52 FEET; (6) THENCE NORTHERLY ALONG THE ARC OF SAID CURVE, A DISTANCE OF 145.69 FEET TO THE END OF SAID CURVE; (7) THENCE N.89°09'05"W, 152.82 FEET TO THE BEGINNING OF A NON-TANGENT CURVE CONVEXE WESTERLY, HAVING A RADIUS OF 175.00 FEET, A CENTRAL ANGLE OF 04°37'45", AND A CHORD BEARING AND DISTANCE OF S.11°33'00"W, 14.13 FEET; (8) THENCE SOUTHERLY ALONG THE ARC OF SAID CURVE, A DISTANCE OF 14.14 FEET TO THE END OF SAID CURVE; (9) THENCE N.76°08'07"W, 50.00 FEET TO THE BEGINNING OF A NON-TANGENT CURVE CONVEXE NORTHWESTERLY, HAVING A RADIUS OF 25.00 FEET, A CENTRAL ANGLE OF 101°52'50", AND A CHORD BEARING AND DISTANCE OF S.64°52'22"W, 38.73 FEET; (10) THENCE SOUTHWESTERLY ALONG THE ARC OF SAID CURVE, A DISTANCE OF 44.31 FEET TO A POINT OF REVERSE CURVATURE OF A CURVE CONVEXE SOUTHERLY, HAVING A RADIUS OF 225.00 FEET, A CENTRAL ANGLE OF 25°24'52", AND A CHORD BEARING AND DISTANCE OF N.77°17'34"W, 98.99 FEET; (11) THENCE WESTERLY ALONG THE ARC OF SAID CURVE, A DISTANCE OF 98.80 FEET TO A POINT OF TANGENCY; (12) THENCE N.90°00'00"W, 385.48 FEET TO A POINT ON THE SOUTHERLY BOUNDARY OF STONE CREEK BY DEL WEBB SUNDANCE PHASE 1&2, AS PER PLAT THEREOF RECORDED IN PLAT BOOK 14, PAGES 176 THROUGH 183, INCLUSIVE, OF THE PUBLIC RECORDS OF MARION COUNTY, FLORIDA; THENCE DEPARTING SAID NORTHERLY BOUNDARY ALONG SAID SOUTHERLY BOUNDARY THE FOLLOWING EIGHTEEN (18) COURSES: (1) THENCE N.00°00'00"E, 72.50 FEET; (2) THENCE N.08°06'53"W, 118.84 FEET; (3) THENCE N.08°49'35"W, 71.63 FEET; (4) THENCE N.18°01'44"W, 71.63 FEET; (5) THENCE N.27°13'53"W, 71.63 FEET; (6) THENCE N.36°28'02"W, 65.37 FEET; (7) THENCE N.37°54'41"W, 75.00 FEET; (8) THENCE N.52°25'19"E, 211.44 FEET; (9) THENCE N.53°41'22"E, 54.09 FEET; (10) THENCE N.55°41'05"E, 53.68 FEET; (11) THENCE N.63°59'04"E, 53.68 FEET; (12) THENCE N.68°19'19"E, 43.90 FEET; (13) THENCE N.72°25'50"E, 43.90 FEET; (14) THENCE N.76°16'37"E, 43.91 FEET; (15) THENCE N.81°04'14"E, 44.16 FEET; (16) THENCE S.89°40'46"E, 416.05 FEET; (17) THENCE S.55°15'56"E, 107.09 FEET; (18) THENCE N.89°51'54"E, 262.22 FEET TO A POINT ON THE EAST BOUNDARY OF THE SOUTHWEST 1/4 OF THE NORTHEAST 1/4 OF SAID SECTION 1; THENCE DEPARTING SAID SOUTHERLY BOUNDARY, ALONG SAID EAST BOUNDARY, S.00°01'43"E, 1,169.71 FEET TO A POINT OF BEGINNING SAID LANDS CONTAINING 22.15 ACRES, MORE OR LESS.



CURVE	LENGTH	RADIUS	DELTA	CHORD	BEARING
C1	145.69	859.97	009°42'25"	145.52	N06°43'14"W
C2	14.14	175.00	004°37'45"	14.13	S11°33'00"W
C3	44.31	25.00	101°52'50"	38.73	S64°52'22"W
C4	98.80	225.00	025°24'52"	98.99	N77°17'34"W

LINE	BEARING	LENGTH	LINE	BEARING	LENGTH
L1	N76°08'07"W	50.00	L5	N68°16'19"E	43.90
L2	N5°24'22"E	54.09	L6	N72°25'50"E	43.90
L3	N58°54'05"E	53.68	L7	N76°16'37"E	43.91
L4	N63°59'04"E	53.68	L8	N81°04'14"E	44.16



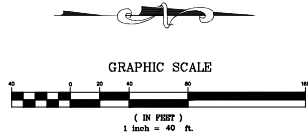
PREPARED BY: JCH CONSULTING GROUP, INC., 226 SW 15TH STREET, Ocala, FLORIDA 34721



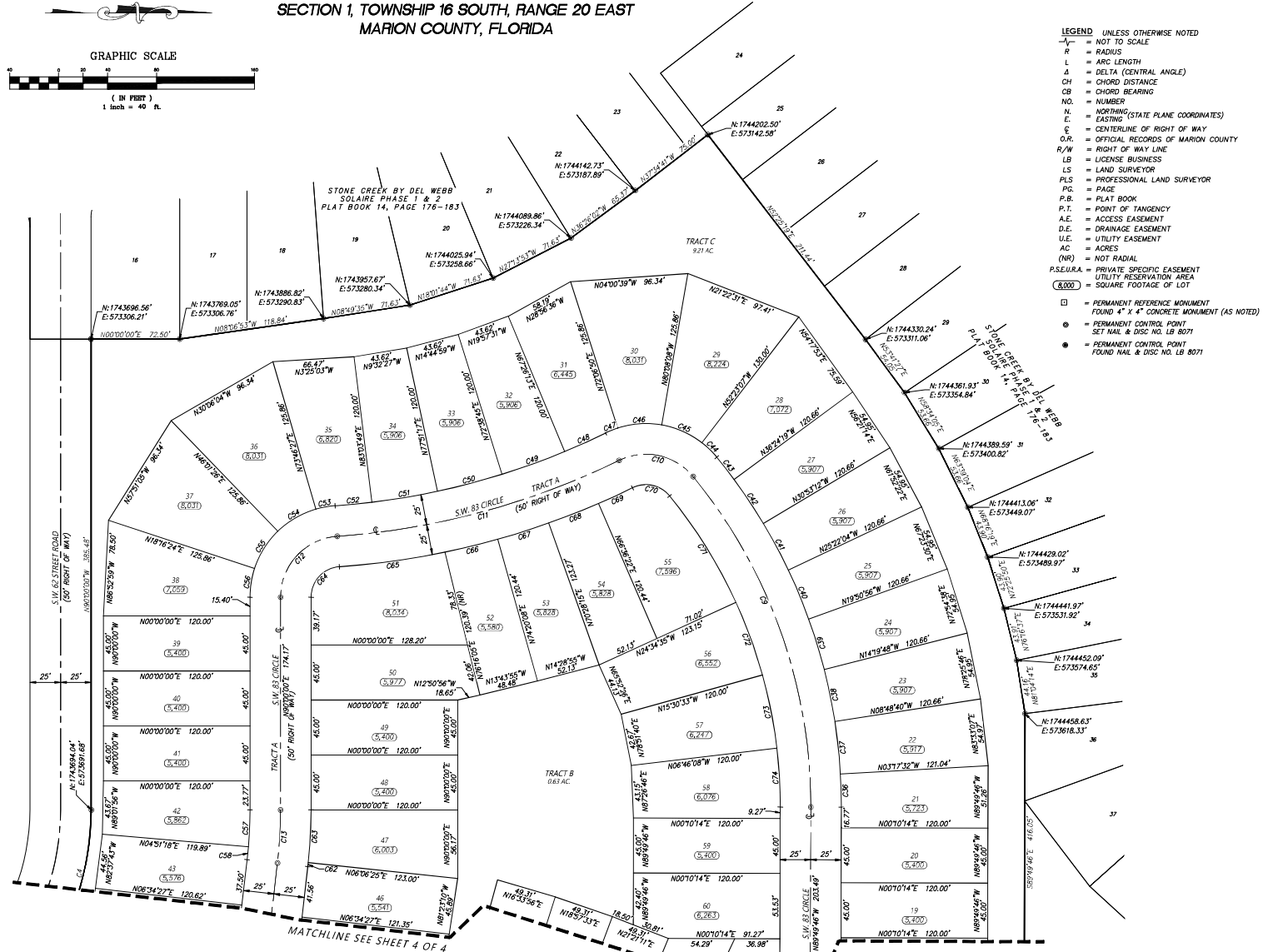
STONE CREEK BY DEL WEBB SUNDANCE PHASE 4

A PLANNED UNIT DEVELOPMENT
SECTION 1, TOWNSHIP 16 SOUTH, RANGE 20 EAST
MARION COUNTY, FLORIDA

PLAT BOOK _____, PAGE _____
SHEET 3 OF 4



CURVE	LENGTH	RADIUS	DELTA	CHORD	BEARING
C9	293.01'	425.00'	039°30'07"	287.24'	N70°25'10"E
C10	66.98'	50.00'	076°45'08"	62.08'	N12°17'33"E
C11	240.28'	625.00'	022°01'39"	238.81'	N15°04'12"W
C12	75.00'	50.00'	085°56'38"	68.16'	N47°01'41"W
C13	43.60'	380.00'	006°34'27"	43.58'	N86°42'46"W
C36	27.20'	450.00'	003°27'46"	27.19'	N88°26'21"E
C37	43.35'	450.00'	005°31'08"	43.33'	N83°56'54"E
C38	43.35'	450.00'	005°31'08"	43.33'	N78°25'46"E
C39	43.35'	450.00'	005°31'08"	43.33'	N72°54'39"E
C40	43.35'	450.00'	005°31'08"	43.33'	N67°33'30"E
C41	43.35'	450.00'	005°31'08"	43.33'	N61°52'22"E
C42	43.35'	450.00'	005°31'08"	43.33'	N56°21'14"E
C43	22.98'	450.00'	002°58'34"	22.98'	N52°19'24"E
C44	17.09'	75.00'	013°03'14"	17.05'	N44°08'30"E
C45	36.33'	75.00'	027°45'01"	35.97'	N23°44'22"E
C46	36.33'	75.00'	027°45'01"	35.97'	N04°00'39"W
C47	10.73'	75.00'	008°11'52"	10.72'	N21°39'06"W
C48	36.87'	600.00'	003°31'14"	36.86'	N24°19'24"W
C49	54.55'	600.00'	005°12'32"	54.53'	N19°57'31"W
C50	54.55'	600.00'	005°12'32"	54.53'	N14°44'59"W
C51	54.55'	600.00'	005°12'32"	54.53'	N09°30'27"W
C52	30.16'	600.00'	002°52'49"	30.16'	N05°29'46"W
C53	15.93'	75.00'	012°10'11"	15.93'	N10°08'28"W
C54	36.33'	75.00'	027°45'01"	35.97'	N30°06'04"W
C55	36.33'	75.00'	027°45'01"	35.97'	N57°31'05"W
C56	23.92'	75.00'	018°16'24"	23.82'	N80°51'48"W
C57	30.08'	355.00'	004°51'18"	30.07'	N87°34'21"W
C58	10.65'	355.00'	001°43'09"	10.65'	N84°17'07"W
C62	3.30'	405.00'	000°28'03"	3.30'	N83°39'34"W
C63	43.17'	405.00'	006°06'25"	43.15'	N86°56'48"W
C64	37.50'	25.00'	085°56'38"	34.08'	N47°01'41"W
C65	87.26'	650.00'	007°41'32"	87.20'	N07°54'08"W
C66	44.43'	650.00'	003°54'58"	44.42'	N13°42'23"W
C67	43.84'	650.00'	003°51'53"	43.84'	N17°25'46"W
C68	43.84'	650.00'	003°51'53"	43.84'	N21°27'42"W
C69	30.51'	650.00'	002°41'23"	30.51'	N24°44'20"W
C70	33.49'	25.00'	076°45'08"	31.04'	N12°17'33"E
C71	103.01'	400.00'	014°45'18"	102.75'	N58°20'46"E
C72	63.50'	400.00'	009°34'02"	63.24'	N69°57'26"E
C73	61.02'	400.00'	008°44'28"	60.96'	N78°51'40"E
C74	48.45'	400.00'	006°56'22"	48.42'	N86°42'03"E



- LEGEND UNLESS OTHERWISE NOTED**
- = NOT TO SCALE
 - R = RADIUS
 - L = ARC LENGTH
 - A = DELTA (CENTRAL ANGLE)
 - CH = CHORD DISTANCE
 - CB = CHORD BEARING
 - NO. = NUMBER
 - N. = NORTHING (STATE PLANE COORDINATES)
 - E. = EASTING
 - C. = CENTERLINE OF RIGHT OF WAY
 - O.R. = OFFICIAL RECORDS OF MARION COUNTY
 - R/W = RIGHT OF WAY LINE
 - LB = LICENSE BUSINESS
 - LS = LAND SURVEYOR
 - PLS = PROFESSIONAL LAND SURVEYOR
 - PG. = PAGE
 - P.B. = PLAT BOOK
 - P.T. = POINT OF TANGENCY
 - A.E. = ACCESS EASEMENT
 - D.E. = DRAINAGE EASEMENT
 - U.E. = UTILITY EASEMENT
 - AC = ACRES
 - (NR) = NOT RADIAL
 - P.SUR/A = PRIVATE SPECIFIC EASEMENT UTILITY RESERVATION AREA
 - (SQ. FT.) = SQUARE FOOTAGE OF LOT
 - = PERMANENT REFERENCE MONUMENT FOUND 4" x 4" CONCRETE MONUMENT (AS NOTED)
 - = PERMANENT CONTROL POINT
 - = SET NAL & DISC NO. LB 8071
 - = PERMANENT CONTROL POINT FOUND NAL & DISC NO. LB 8071

PREPARED BY: JCH CONSULTING GROUP, INC., 426 SW 15TH STREET, SUITE 200, MIAMI, FLORIDA 33137

NOTES:
THIS PLAT IS 4 SHEETS IN TOTAL, AND ONE IS NOT COMPLETE WITHOUT THE OTHERS. FOR DEDICATION AND ACKNOWLEDGEMENTS, SEE SHEET 1 FOR LEGAL DESCRIPTION AND BOUNDARY DETAIL, SEE SHEET 2 FOR LOTS DIMENSIONS, SEE SHEETS 3 AND 4.



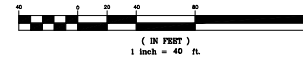
JCH
CONSULTING GROUP, INC.
LAND DEVELOPMENT, SURVEYING & ALIENATION
PLANNING, ENGINEERING & ARCHITECTURE
CORPORATE OFFICE: 1000 W. UNIVERSITY BLVD., SUITE 1000
GAINESVILLE, FLORIDA 32609-4000
PHONE: (352) 454-7400 WWW: JCH.com

STONE CREEK BY DEL WEBB SUNDANCE PHASE 4

PLAT BOOK _____, PAGE _____
SHEET 4 OF 4

A PLANNED UNIT DEVELOPMENT
SECTION 1, TOWNSHIP 16 SOUTH, RANGE 20 EAST
MARION COUNTY, FLORIDA

GRAPHIC SCALE



MATCHLINE SEE SHEET 3 OF 4



CURVE TABLE				
CURVE	LENGTH	RADIUS	DELTA	CHORD
C5	25.66'	150.00'	01°33'23"	35.58'
C6	114.39'	1035.00'	006°19'57"	114.33'
C7	358.20'	1035.00'	019°49'45"	356.41'
C8	152.15'	75.00'	116°13'58"	127.37'
C14	27.47'	175.00'	008°59'38"	27.44'
C15	17.41'	1010.00'	000°59'15"	17.41'
C16	50.22'	1010.00'	002°50'56"	50.22'
C17	58.59'	1010.00'	003°19'26"	58.58'
C18	58.59'	1010.00'	003°19'26"	58.58'
C19	50.22'	1010.00'	002°50'56"	50.22'
C20	50.22'	1010.00'	002°50'56"	50.22'
C21	50.22'	1010.00'	002°50'56"	50.22'
C22	50.22'	1010.00'	002°50'56"	50.22'
C23	50.22'	1010.00'	002°50'56"	50.22'
C24	25.25'	1010.00'	001°29'56"	25.25'
C25	25.33'	100.00'	014°30'46"	25.26'
C26	1.32'	100.00'	000°45'17"	1.32'
C27	16.43'	25.00'	037°39'09"	16.13'
C28	28.44'	60.00'	027°09'37"	28.18'
C29	34.58'	60.00'	033°01'09"	34.10'
C30	34.58'	60.00'	033°01'09"	34.10'

CURVE TABLE				
CURVE	LENGTH	RADIUS	DELTA	CHORD
C31	34.58'	60.00'	033°01'09"	34.10'
C32	34.61'	60.00'	033°01'09"	34.13'
C33	7.28'	25.00'	016°41'06"	7.25'
C34	9.15'	25.00'	020°58'04"	9.10'
C35	29.67'	100.00'	017°00'02"	29.56'
C36	10.65'	355.00'	001°43'09"	10.65'
C39	38.12'	25.00'	087°21'31"	34.53'
C60	68.29'	1060.00'	003°41'29"	68.28'
C61	29.72'	125.00'	013°33'23"	29.65'
C62	3.30'	405.00'	000°28'03"	3.30'
C75	101.43'	50.00'	116°13'58"	84.91'
C76	27.00'	1060.00'	001°27'35"	27.00'
C77	44.29'	1060.00'	002°23'38"	44.28'
C78	44.29'	1060.00'	002°23'38"	44.28'
C79	44.29'	1060.00'	002°23'38"	44.28'
C80	44.29'	1060.00'	002°23'38"	44.28'
C81	18.32'	1060.00'	000°59'24"	18.31'
C82	95.52'	1060.00'	005°09'47"	95.49'
C83	38.12'	25.00'	087°21'31"	34.53'

LEGEND UNLESS OTHERWISE NOTED

- NOT TO SCALE
- R = RADIUS
- L = ARC LENGTH
- Δ = DELTA (CENTRAL ANGLE)
- CH = CHORD DISTANCE
- CB = CHORD BEARING
- NO. = NUMBER
- N. = NORTHING (STATE PLANE COORDINATES)
- E. = EASTING (STATE PLANE COORDINATES)
- CL = CENTERLINE OF RIGHT OF WAY
- O.R. = OFFICIAL RECORDS OF MARION COUNTY
- R/W = RIGHT OF WAY LINE
- LB = LICENSE BUSINESS
- LS = LAND SURVEYOR
- PLS = PROFESSIONAL LAND SURVEYOR
- PG. = PAGE
- P.B. = PLAT BOOK
- P.T. = POINT OF TANGENCY
- A.E. = ACCESS EASEMENT
- D.E. = DRAINAGE EASEMENT
- U.E. = UTILITY EASEMENT
- AC. = ACRES
- (N/R) = NOT RADIAL
- P.S.E.U.R.A. = PRIVATE SPECIFIC EASEMENT UTILITY RESERVATION AREA
- (S.F.) = SQUARE FOOTAGE OF LOT
- = PERMANENT REFERENCE MONUMENT FOUND 4" x 4" CONCRETE MONUMENT (AS NOTED)
- = PERMANENT CONTROL POINT SET NAIL & DISC NO. LB 8071
- = PERMANENT CONTROL POINT FOUND NAIL & DISC NO. LB 8071

NOTES:
THIS PLAT IS 4 SHEETS IN TOTAL, AND ONE IS NOT COMPLETE WITHOUT THE OTHERS FOR REVISION AND ACKNOWLEDGEMENTS. SEE SHEET 1 FOR LEGAL DESCRIPTION AND BOUNDARY DETAIL. SEE SHEET 2, FOR LOT DIMENSIONS. SEE SHEETS 3 AND 4.

PREPARED BY: JCH CONSULTING GROUP, INC., 426 SW 15TH STREET, GAINESVILLE, FLORIDA 32607