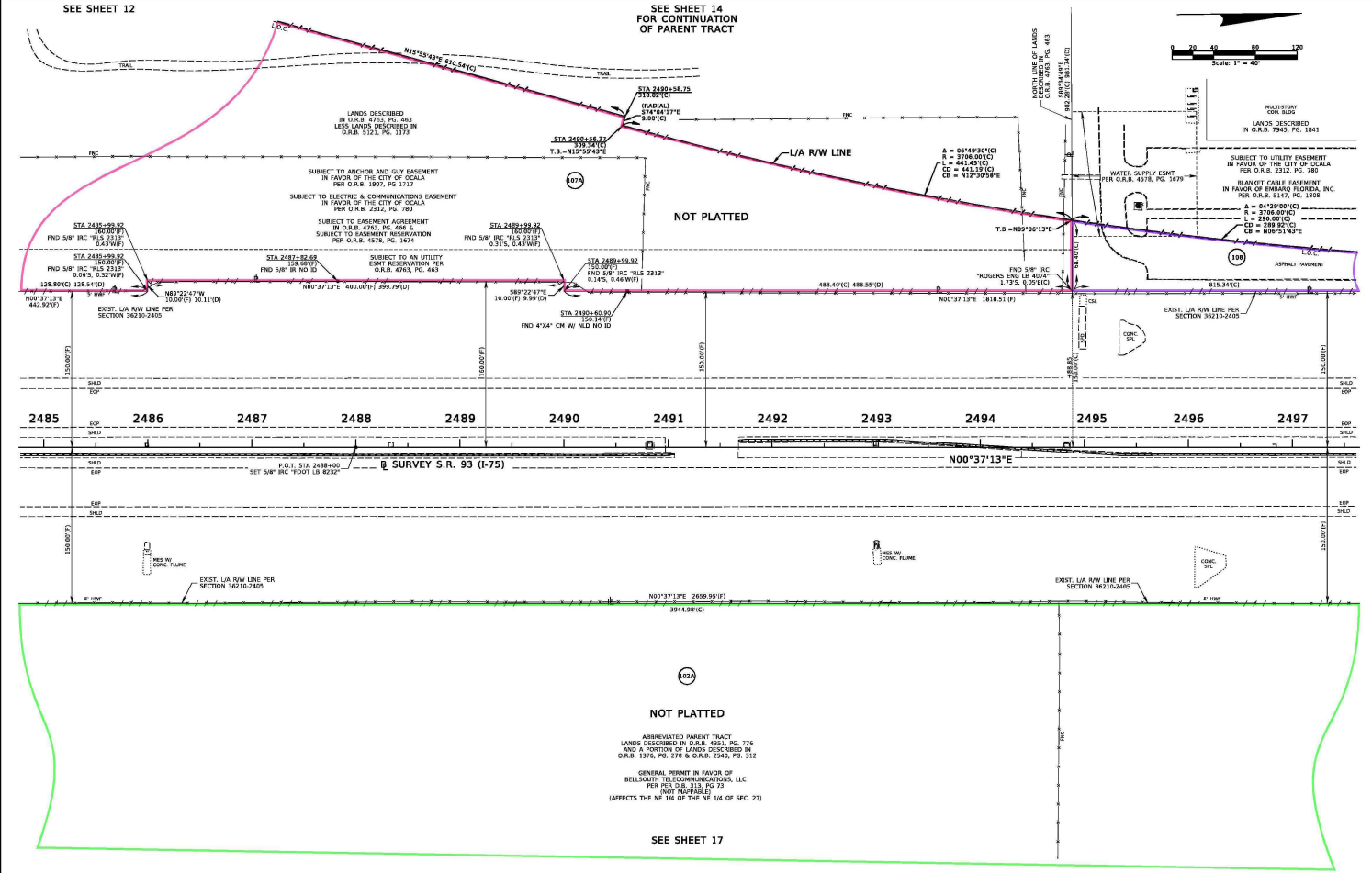


SEE SHEET 12

SEE SHEET 14
FOR CONTINUATION
OF PARENT TRACT

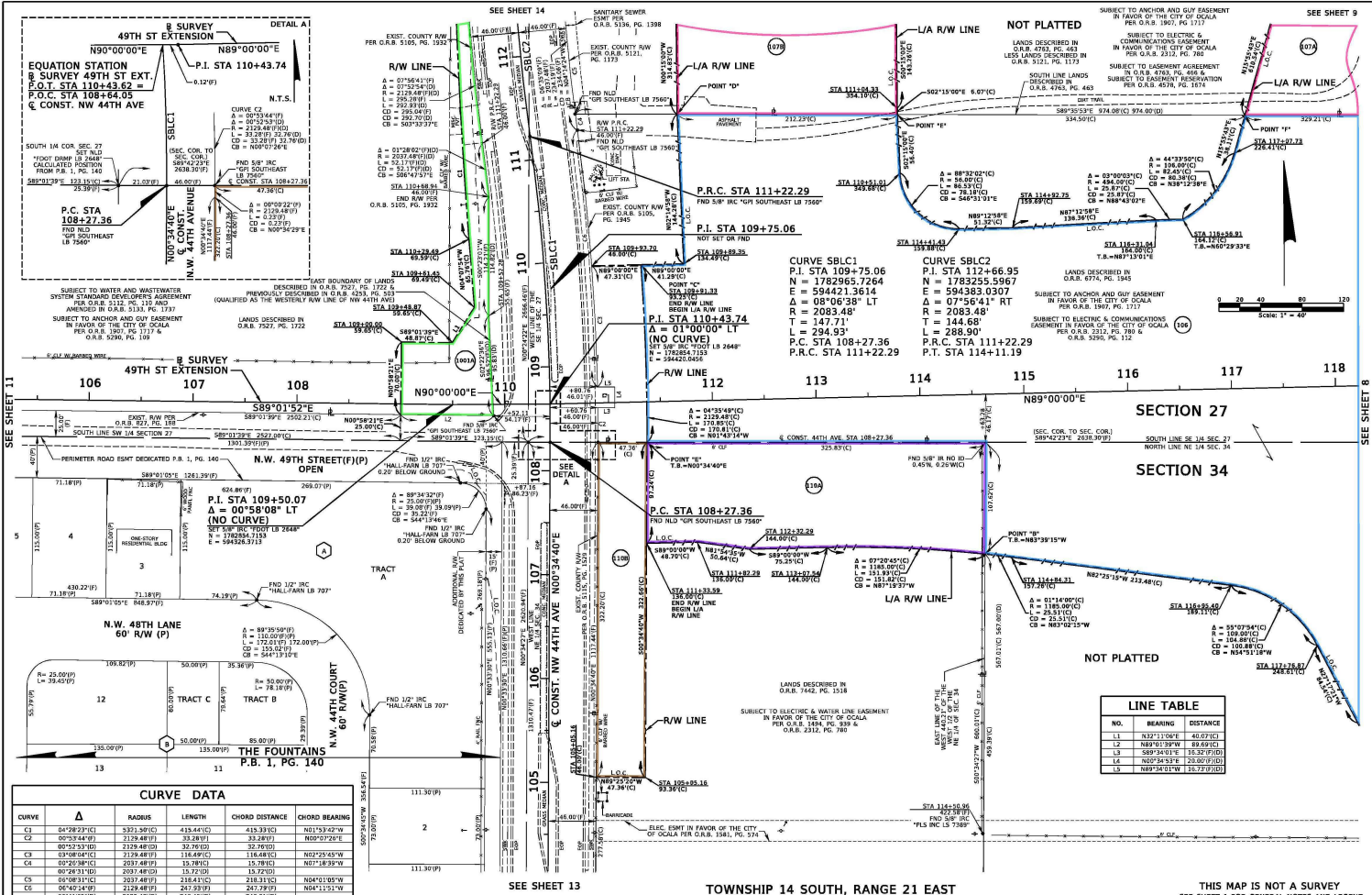


SECTION 27, TOWNSHIP 14 SOUTH, RANGE 21 EAST

THIS MAP IS NOT A SURVEY
SEE SHEET 1 FOR GENERAL NOTES AND LEGEND
STATE ROAD 93 (I-75) AT NW 49TH STREET

RIGHT OF WAY MAP	FLORIDA DEPARTMENT OF TRANSPORTATION SURVEYING AND MAPPING	APPROVED BY:	DATE: 07/22/2024	BY: FRELIN, K. WOOD	DATE: 08/15/2024	FED. PROJ. D523-045-B	SECTION 36210	MAP PROVIDED BY: DAVIS, P.C. 1615 LANE, SEVEN LAKES, CHLANDO, FL 32814	DATE CHECKED: 07/22/2024	BY: FRELIN, K. WOOD	DATE: 08/15/2024	STATE ROAD NO. 93	MARION COUNTY	F.P. NO. 435209-1	SCALE: 1"=40'	SEE LEGEND FOR GENERAL NOTES	SHEET 9 OF 21
		FOR CORRECT SECRETARY		REVISION	BY	DATE	REVISION	BY	DATE	REVISION	BY	DATE					

07/22/2024



CURVE DATA					
CURVE	Δ	RADIUS	LENGTH	CHORD DISTANCE	CHORD BEARING
C1	04°28'27"(C)	3331.30(C)	415.44(C)	415.33(C)	N21°53'42"W
C2	02°53'44"(P)	2129.48(P)	33.28(P)	33.28(P)	N50°27'26"E
C3	02°53'37"(P)	2129.48(P)	32.78(P)	32.78(P)	N50°27'26"E
C4	02°53'37"(P)	2129.48(P)	116.69(C)	116.69(C)	N50°27'26"E
C5	02°53'37"(P)	2129.48(P)	15.79(C)	15.79(C)	N50°27'26"E
C6	02°53'37"(P)	2129.48(P)	218.41(C)	218.31(C)	N50°27'26"E
C7	02°53'37"(P)	2129.48(P)	261.55(P)	261.72(P)	N50°27'26"E
C8	02°53'37"(P)	2129.48(P)	248.45(C)	248.31(C)	N50°27'26"E

LINE TABLE		
NO.	BEARING	DISTANCE
L1	N21°11'00"E	40.07(C)
L2	N89°21'30"W	89.07(C)
L3	S89°21'30"W	15.35(P/ID)
L4	N00°34'57"E	20.00(P/ID)
L5	N89°21'30"W	15.35(P/ID)

RIGHT OF WAY MAP FLORIDA DEPARTMENT OF TRANSPORTATION SURVEYING AND MAPPING APPROVED BY: [Signature] DATE: [Blank] BY: [Blank] DATE: [Blank] FEDERAL PROJECT: D523-045-B SECTION 36210 MARION COUNTY P.P. NO. 435209-1 SHEET 12 OF 21

07/22/2024

