

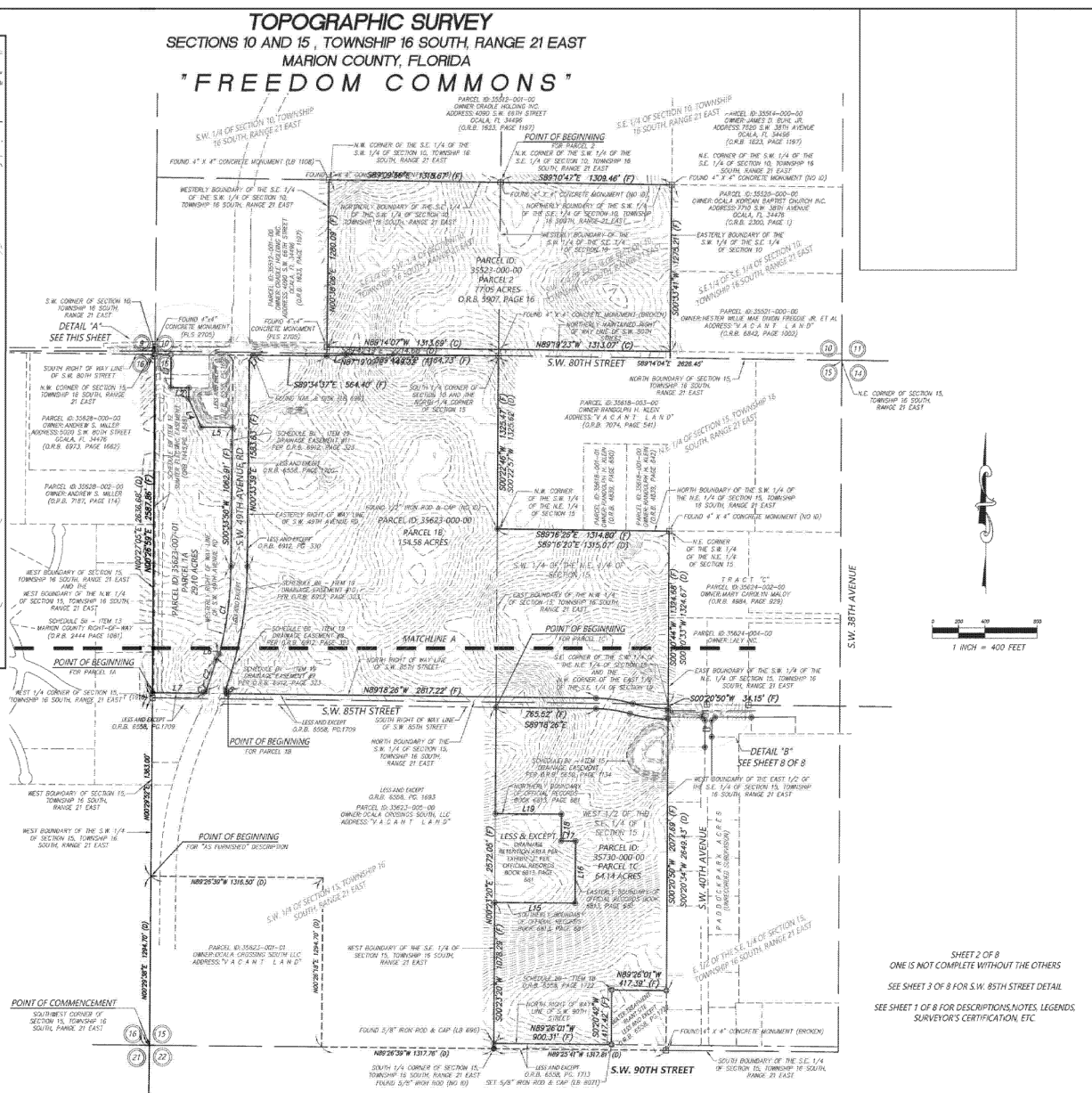
SHEET INDEX	
SHEET	CONTENTS
1	DESCRIPTIONS, NOTES, LEGEND, SURVEYOR'S CERTIFICATION
2	OVERALL BOUNDARY, CURVE & LINE TABLES
3	TOPOGRAPHY, TREES & FLOOD ZONE DELINEATION (NORTH OF MATCHLINE A)
4	TOPOGRAPHY, TREES & FLOOD ZONE DELINEATION (SOUTH OF MATCHLINE A)
5	DETAILS OF S.W. 40TH STREET
6	DETAILS OF S.W. 40TH AVENUE RD
7	DETAILS OF S.W. 40TH AVENUE RD

REVISIONS				
FB/PG	DATE	DRAWN	REVISION	OKD
	7/15/21	KLJ	ADD "AS SURVEYED" DESCRIPTIONS	GJH
	07/27/21	GJH	REWESED PARCEL 1C	GJH
21-23	08/08/21	KLJ	ADD TOPOGRAPHY	GJH
	08/21/22	M.A.	ADD TOPOGRAPHY ALONG S.W. 85TH STREET	GJH



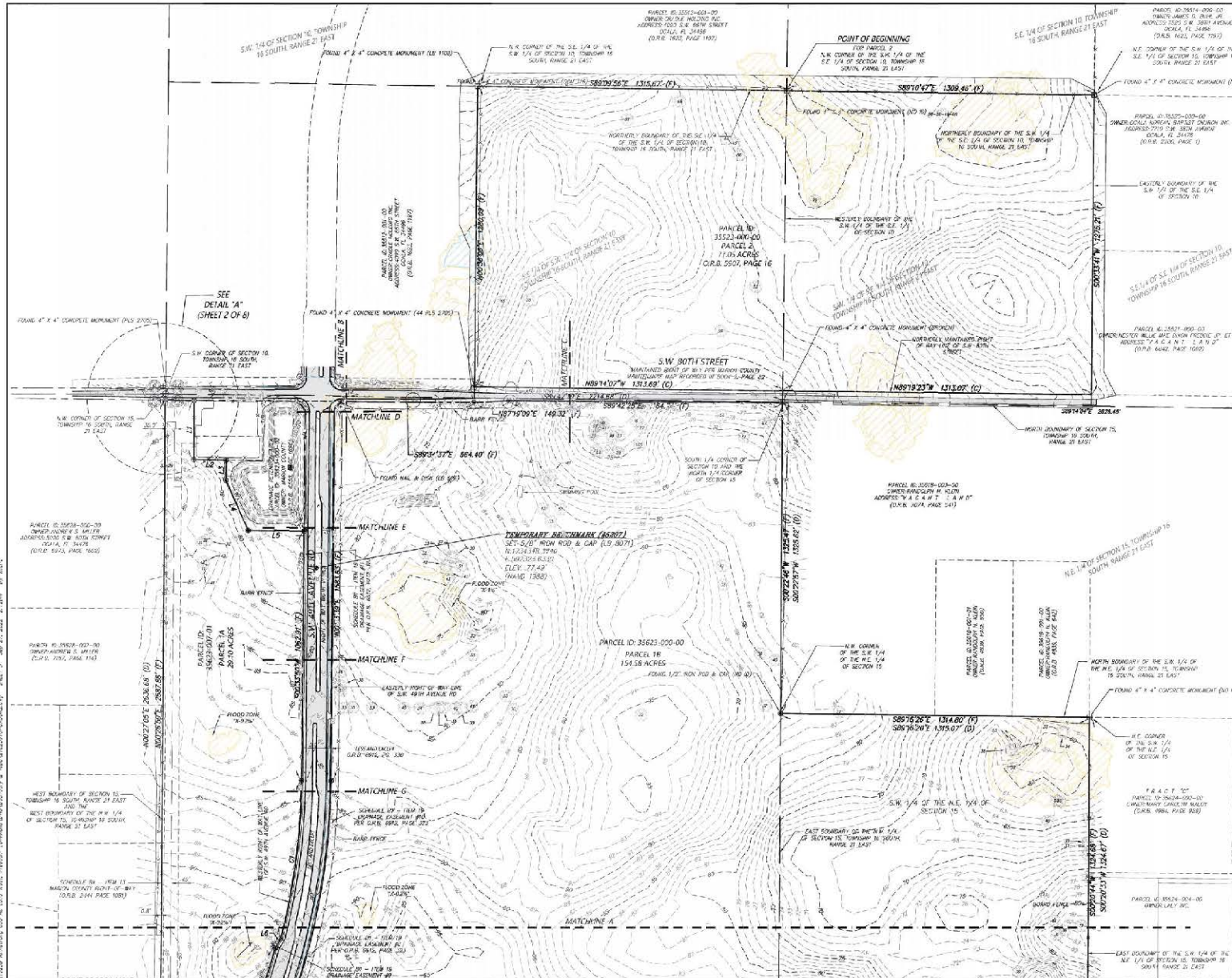
LOCATED IN SECTIONS 10 & 15,
TOWNSHIP 16 SOUTH,
RANGE 21 EAST

PLAT OF
BOUNDARY & TOPOGRAPHIC SURVEY
-FOR-
FREEDOM COMMONS DEVELOPMENT, LLC



SHEET 2 OF 8
ONE IS NOT COMPLETE WITHOUT THE OTHERS
SEE SHEET 3 OF 8 FOR S.W. 85TH STREET DETAIL
SEE SHEET 1 OF 8 FOR DESCRIPTIONS, NOTES, LEGENDS,
SURVEYOR'S CERTIFICATION, ETC

FB/PG		FIELD DATE		JOB NO. 21023970POADDR2	<div style="text-align: center; vertical-align: middle;"> <div>2</div> <div>OF</div> <div>8</div> </div>
21-2/58		03/03/2021			
DRAWING DATE	BY	APPROVED		SCALE 1" = 400'	
07/01/2021	M.A.	C.H.			



TOPOGRAPHIC SURVEY
SECTIONS 10 AND 15,
TOWNSHIP 16 SOUTH, RANGE 21 EAST
MARION COUNTY, FLORIDA
"FREEDOM COMMONS"

TREE LEGEND
 (SIZE DENOTED INSIDE SYMBOL)

CEGAR
HICKORY
HOLLY
LAUREL OAK
LYR
MAGNOLIA
MAPLE
MIMOSA
OAK
PAIM
PECAN
PINE

SHEET INDEX

SHEET	CONTENTS
1	DESCRIPTIONS, TOWNSHIP 16 SOUTH, RANGE 21 EAST
2	DETAILED SURVEY, PARCELS 1A, 1B, 1C, 1D
3	TOPOGRAPHY, TREES & FLOOD ZONE DETERMINATION (NORTH OF MATCHLINE 2)
4	TOPOGRAPHY, TREES & FLOOD ZONE DETERMINATION (SOUTH OF MATCHLINE 2)
5	DETAILS OF S.W. 80TH STREET
6	DETAILS OF S.W. 80TH AVENUE RD
7	DETAILS OF S.W. 80TH AVENUE RD

SHEET 3 OF 8
 ONE IS NOT COMPLETE WITHOUT THE OTHERS
 SEE SHEET 1 OF 8 FOR DESCRIPTIONS, NOTES, LEGENDS,
 SURVEYOR'S CERTIFICATION, ETC.

REVISIONS

REV.	DATE	DRAWN	REASON	CHKD
1	7/15/21	N.L.	ADD "AS SURVEYED" DESCRIPTIONS	CH
2	07/27/21	CH	RENAME PARCEL 1D	CH
3	07/29/21	N.L.	ADD TOPOGRAPHY	CH
4	03/23/22	M.A.	ADD TOPOGRAPHY ALONG S.W. 80TH STREET	CH

JCH
 CONSULTING GROUP, INC.
 LAND DEVELOPMENT - SURVEYING & PLANNING
 PLANNING - ENVIRONMENTAL - C.E.S.
 4010 S.W. 11TH AVENUE, SUITE 100
 MIAMI, FL 33135
 (305) 555-1111 FAX (305) 555-1112
 WWW.JCHCONSULTING.COM

LOCATED IN SECTIONS 10 & 15,
 TOWNSHIP 16 SOUTH,
 RANGE 21 EAST

PLAT OF
 BOUNDARY & TOPOGRAPHIC SURVEY
 -FOR-
 FREEDOM COMMONS DEVELOPMENT, LLC

FL/PC	FIELD DATE	JOB NO.	3 OF 8
21-249	03/23/2021	21023910400R2	
DRAWING DATE	BY	APPROVED	SCALE
07/29/2021	N.L.	CH	1" = 200'

Project Name: 21023910400R2 Freedom Commons 2021-249 100% Final Topographic Survey and Plat for Development of Freedom Commons, LLC
 Date: 03/23/2022 2:20pm By: M.A.

Erving, Ronald L. "Freedom, Liberty, and the American Dream." *Journal of American Studies* 40 (2006): 1-15. <https://doi.org/10.1017/S0021871806004004>. Web. 22 Jan. 2022. 2 Jan. 2022.

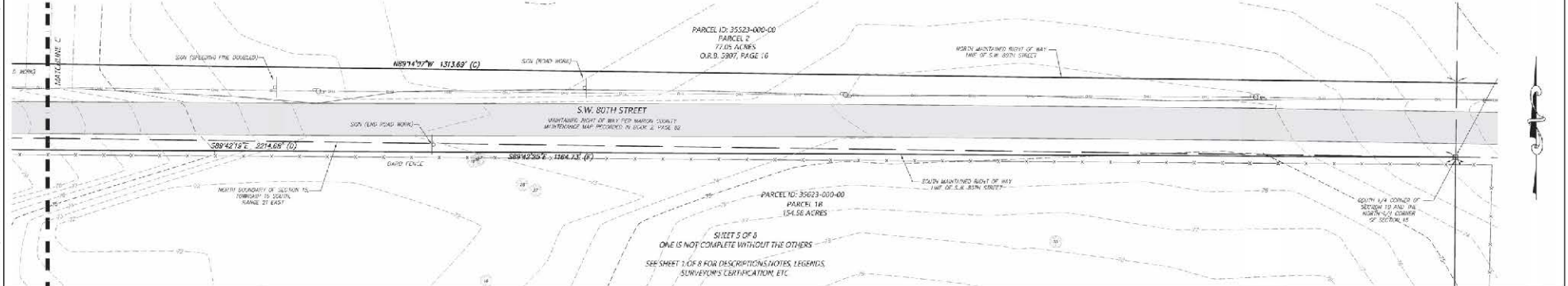
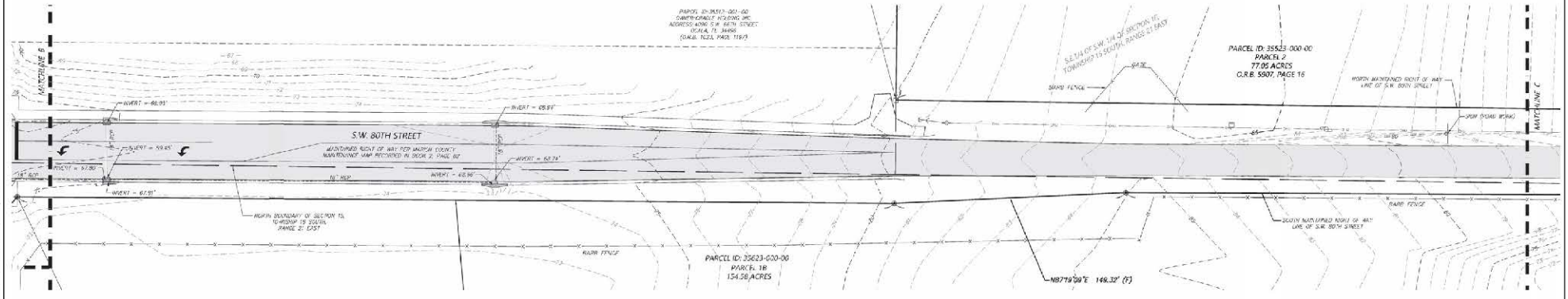
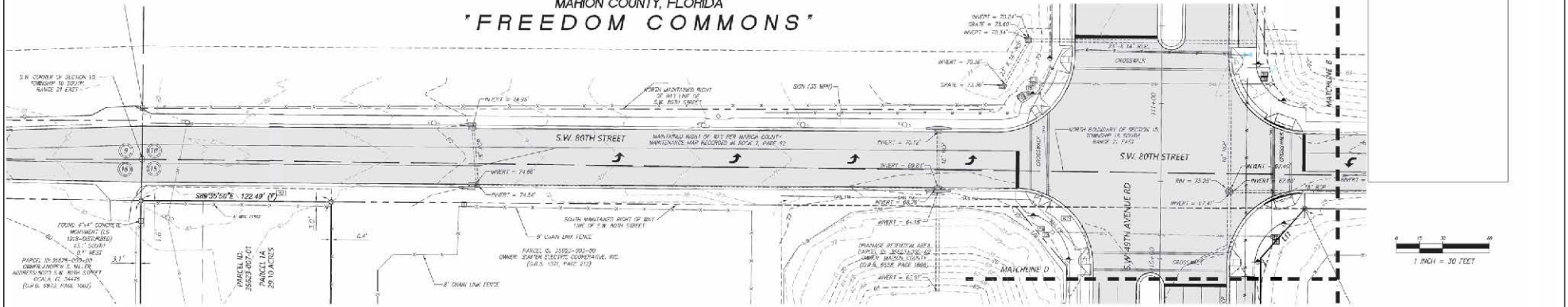


JCH
CONSULTING GROUP, INC.
LAND DEVELOPMENT • SURVEYING & MAPPING
PLANNING • ENVIRONMENTAL • C.E.S.
425 S.W. 15TH STREET, OCEAN FLORIDA 33477
PHONE: (407) 861-1192 FAX: (407) 861-2733 www.jchcg.com

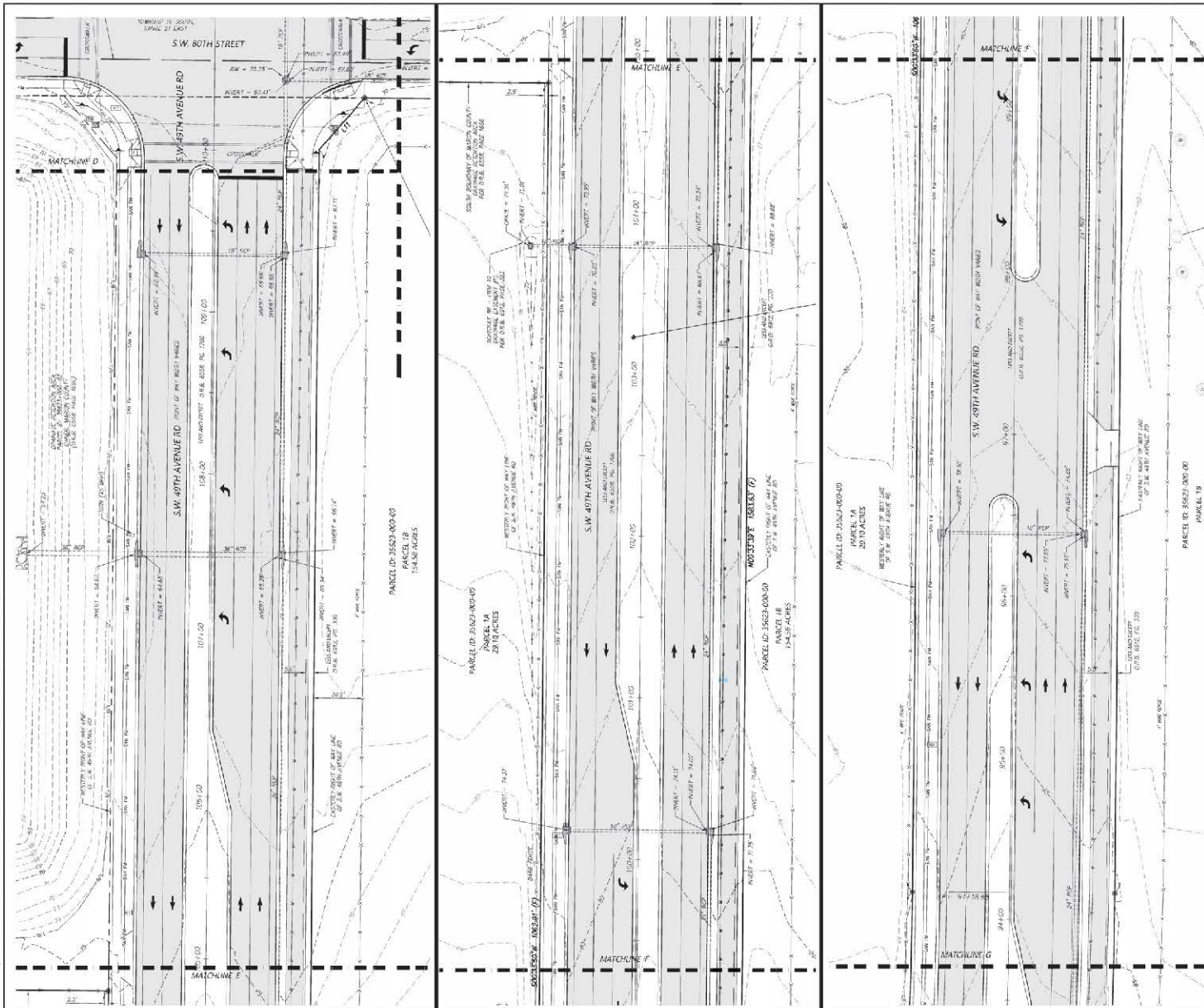
PLAT OF
BOUNDARY & TOPOGRAPHIC SURVEY
-FOR-
FREEDOM COMMONS DEVELOPMENT, LLC

FB/PC		FIELD DATE	JOB NO. 210239TOP0ADDR2	4 OF 8
21-2-2021		05/03/2021		
DRAWING DATE	BY	APPROVED	SCALE 1" = 200'	
07/10/2021	V.A.	C.M.		

TOPOGRAPHIC SURVEY
SECTIONS 10 AND 15, TOWNSHIP 16 SOUTH, RANGE 21 EAST
MARION COUNTY, FLORIDA
"FREEDOM COMMONS"



REVISIONS					 <div>JCH CONSULTING GROUP, INC. LAND DEVELOPMENT - SURVEYING & PLANNING PLANNING - ENVIRONMENTAL - C.E.S. 40101 STATE STREET, SUITE 100, MARION COUNTY, FLORIDA 32003 PHONE: (407) 444-1400 FAX: (407) 444-1401 WWW.JCHGROUP.COM</div>	LOCATED IN SECTIONS 10 & 15, TOWNSHIP 16 SOUTH, RANGE 21 EAST		PLAT OF BOUNDARY & TOPOGRAPHIC SURVEY -FOR- FREEDOM COMMONS DEVELOPMENT, LLC			FL/PC	FIELD DATE	JOB NO.	5 OF 8
REV#	DATE	DRAWN	REVISION	CHK										
01-02	7/15/21	N.L.	ADD "AS SURVEYED" DESCRIPTORS	C.H.								2102391TOP000R2		
	07/27/21	C.H.	REMOVED PARCEL 10	C.H.										
	06/29/21	N.L.	ADD TOPOGRAPHY	C.H.										
	06/21/22	M.A.	ADD TOPOGRAPHY ALONG S.W. 80th STREET	C.H.										
						MARION COUNTY, FLORIDA					DATE	BY	APPROVED	SCALE
											07/01/2021	N.L.	C.H.	1" = 30'



TOPOGRAPHIC SURVEY
SECTIONS 10 AND 15, TOWNSHIP 16 SOUTH, RANGE 21 EAST
MARION COUNTY, FLORIDA
"FREEDOM COMMONS"



SHEET INDEX	
SHEET	CONTENTS
1	EXISTING ROAD, RAIL, UTILITY, SURVEYOR'S CERTIFICATION
2	OVERALL BOUNDARY, CORNER & LINE TABLES
3	TOPOGRAPHY, TREES & FLOOD ZONE DELINEATION (NORTH OF MATCHLINE A)
4	TOPOGRAPHY, TREES & FLOOD ZONE DELINEATION (SOUTH OF MATCHLINE A)
5	DETAILS OF SW 40TH AVENUE RD
6	DETAILS OF SW 45TH AVENUE RD
7	DETAILS OF SW 46TH AVENUE RD

SHEET 6 OF 8
ONE IS NOT COMPLETE WITHOUT THE OTHERS
SEE SHEET 1 OF 8 FOR DESCRIPTIONS, NOTES, LEGENDS, SURVEYOR'S CERTIFICATION, ETC.

REVISIONS				
REV	DATE	DRAWN	REVISION	CHK
1	7/15/21	N.L.	ADD "AS SURVEYED" DESCRIPTIONS	CAH
2	07/27/21	CAH	REVISED PARCEL 1C	CAH
3	07/27/21	N.L.	ADD TOPOGRAPHY	CAH
4	03/29/23	M.A.	ADD X-COMMUNITY ALONG S.W. 35TH STREET	CAH



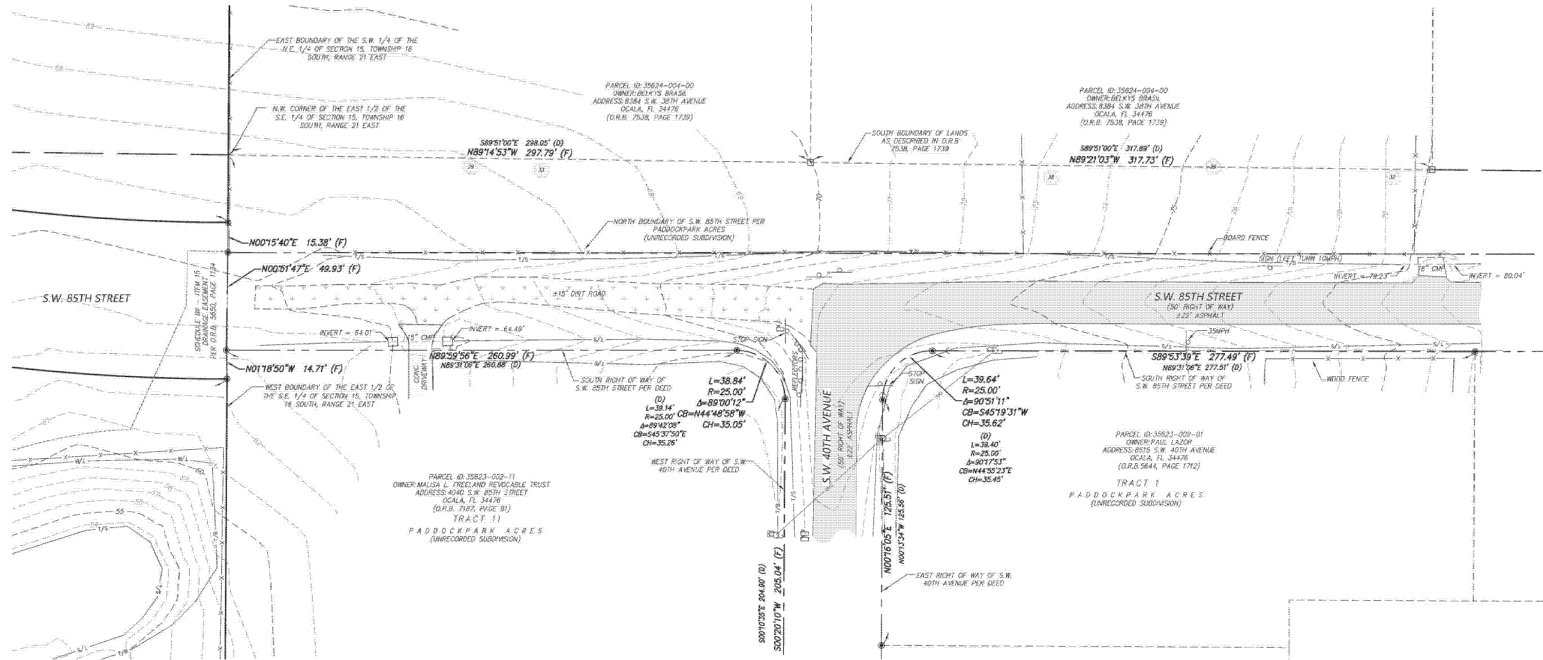
LOCATED IN SECTIONS 10 & 15,
TOWNSHIP 16 SOUTH,
RANGE 21 EAST
MARION COUNTY, FLORIDA

PLAT OF
BOUNDARY & TOPOGRAPHIC SURVEY
-FOR-
FREEDOM COMMONS DEVELOPMENT, LLC

REV/PC		FIELD DATE		JOB NO.		6 OF 8
21-2493		05/13/2021		210239TOP000R2		
DRAWING DATE		BY	APPROVED	SCALE		
07/01/2021		N.L.	CAH	1" = 30'		

6
OF
8

TOPOGRAPHIC SURVEY SECTIONS 10 AND 15, TOWNSHIP 16 SOUTH, RANGE 21 EAST MARION COUNTY, FLORIDA "FREEDOM COMMONS"



SHEET 8 OF 8
ONE IS NOT COMPLETE WITHOUT THE OTHERS
SEE SHEET 1 OF 8 FOR DESCRIPTIONS, NOTES, LEGENDS,
SURVEYOR'S CERTIFICATION, ETC.

REVISIONS				
FB/PG	DATE	DRAWN	REVISION	OKD
	7/15/21	KLJ	ADD "AS SURVEYED" DESCRIPTIONS	CJH
	07/27/21	CJH	REVISED PARCEL 1C	CJH
21-03	08/08/21	KLJ	ADD TOPOGRAPHY	CJH
	09/21/22	M.A.	ADD TOPOGRAPHY ALONG SW 85 STREET	CJH

JCH
CONSULTING GROUP, INC.
LAND DEVELOPMENT - SURVEYING - PLANNING - ENVIRONMENTAL - G.I.S.
4678 75th STREET, SUITE 100, MARION COUNTY, FLORIDA 32009
PHONE: (407) 467-1000 FAX: (407) 467-1001 WWW.JCHGROUP.COM
E-MAIL: JCH@JCHGROUP.COM

LOCATED IN SECTIONS 10 & 15,
TOWNSHIP 16 SOUTH,
RANGE 21 EAST
MARION COUNTY, FLORIDA

PLAT OF
BOUNDARY & TOPOGRAPHIC SURVEY
-FOR-
FREEDOM COMMONS DEVELOPMENT, LLC

FB/PG		FIELD DATE		JOB NO. 210239TOPORADD2
21-2/58		05/03/2021		
DRAWING DATE		BY	APPROVED	SCALE 1" = 30'
07/01/2021		M.A.	CJH	

8
OF
8