



FDOT Land Acquisition-105.05  
 PID # 13689-000-00  
 0.31 Acres Acquired by FDOT

Roads

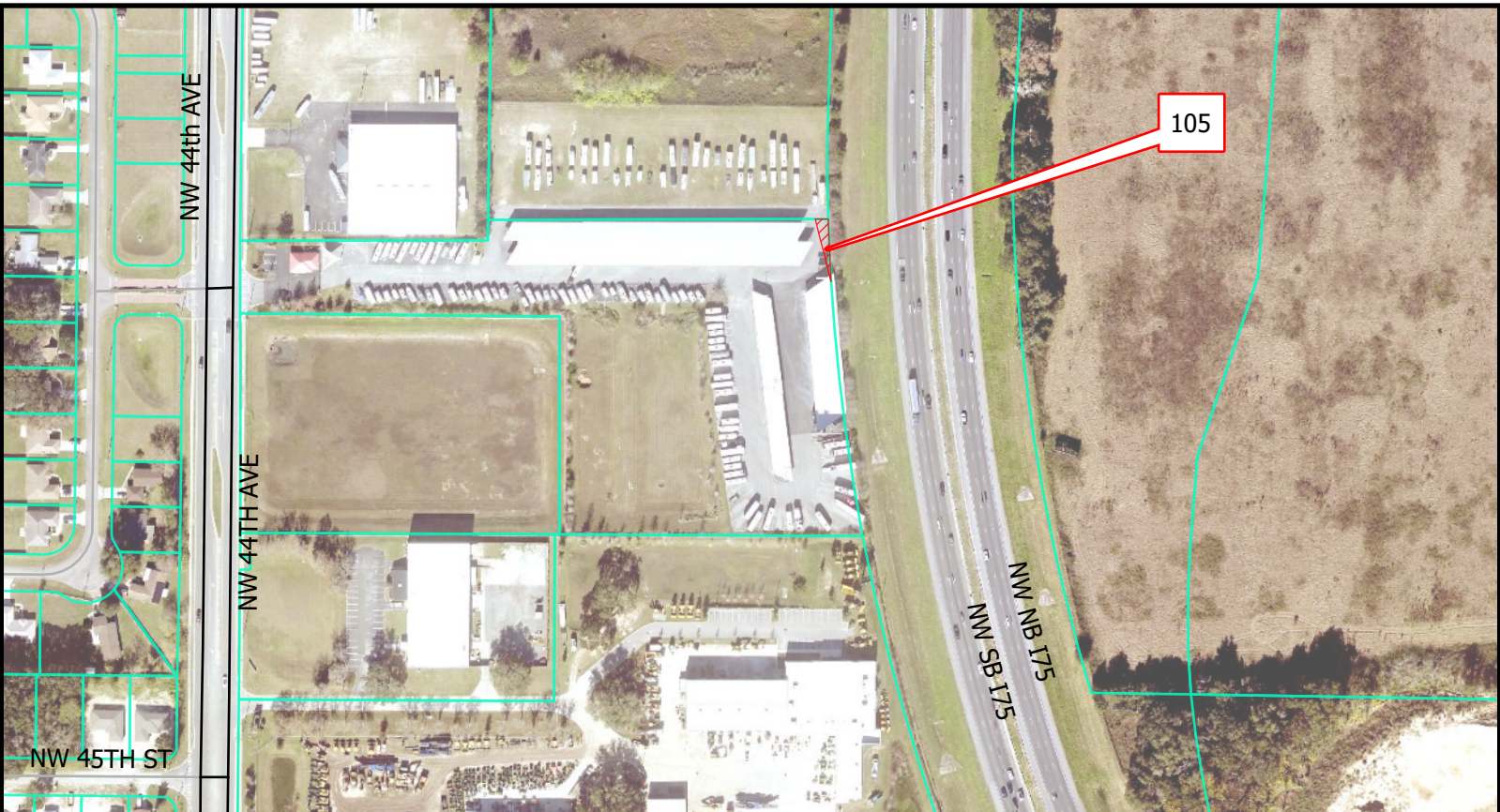
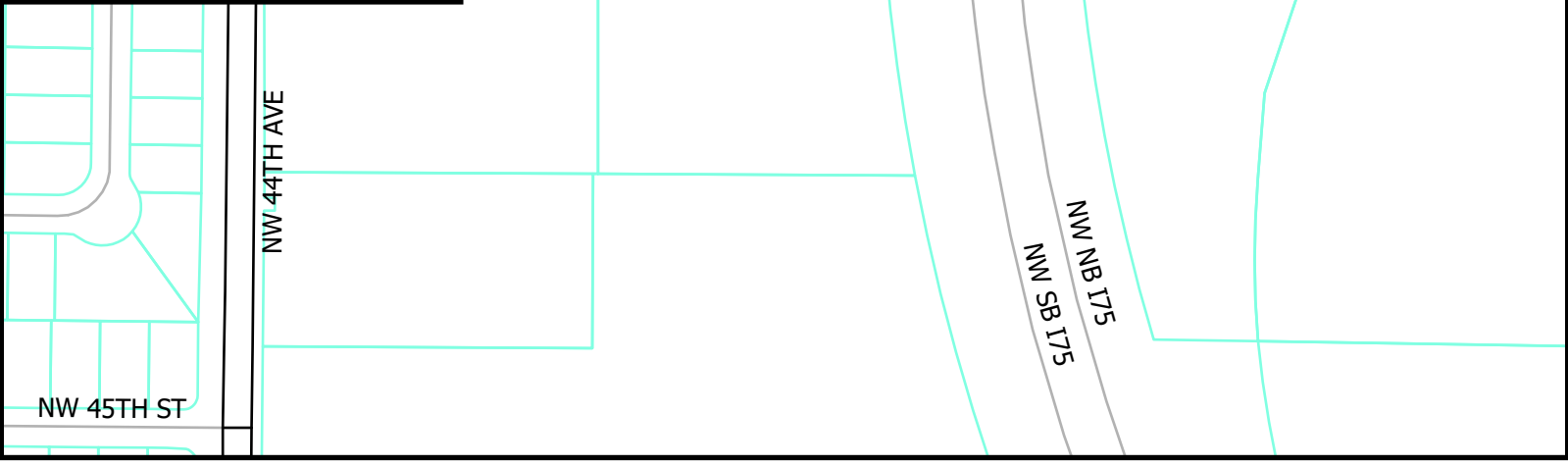
- OCE Maintained Paved
- OCE Maintained Unpaved
- Not Maintained

Project Area

- ▨ FDOT Reference Parcel-105

0.1

Miles



Pathway:

\\mcbcc1\dfs\GIS\_TR\Clay.Gibson\PDFs

Technician: CG

Printed: 12/29/2025

Marion County Office of the County Engineer  
 Asset Management Section  
 412 S.E. 25th Avenue  
 Ocala, FL 34471

