



JCH

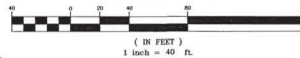
CONSULTING GROUP, INC.
LAND DEVELOPMENT, SURVEYING & PLANNING
PLANNING, ENVIRONMENTAL & GIS
3818 W. UNIVERSITY AVENUE, SUITE 200
OCALA, FLORIDA 34701
TEL: 352.237.4400 FAX: 352.237.4401 www.jch.com

OCALA PRESERVE PHASE 8

A REPLAT OF A PORTION OF ASHLEY FARMS GOLF AND COUNTRY CLUB - PHASE 10 AS PER PLAT THEREOF RECORDED IN PLAT BOOK 11, PAGES 65 THROUGH 72, INCLUSIVE OF THE PUBLIC RECORDS OF MARION COUNTY, FLORIDA.

A PLANNED UNIT DEVELOPMENT
SECTIONS 33 & 34, TOWNSHIP 14 SOUTH, RANGE 21 EAST
MARION COUNTY, FLORIDA

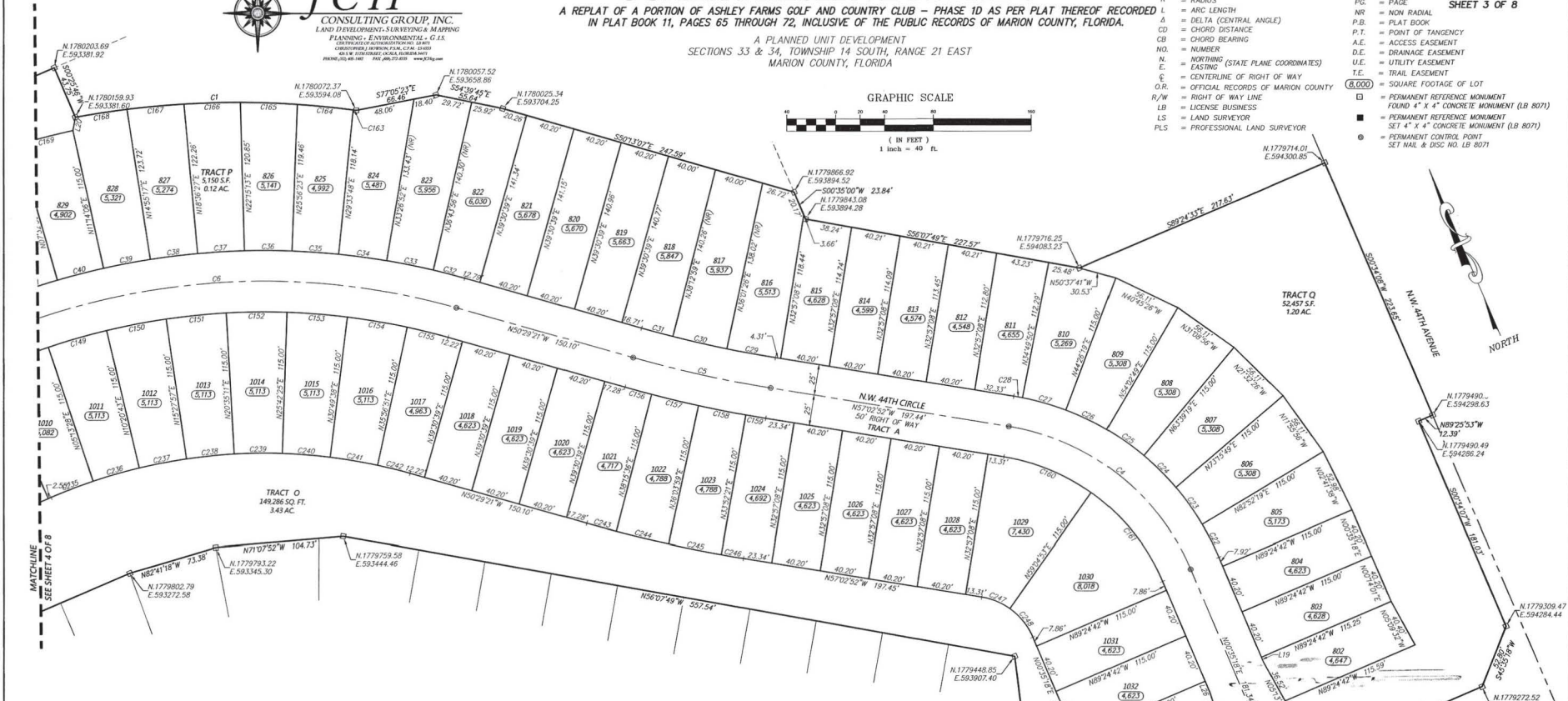
GRAPHIC SCALE



- LEGEND** UNLESS OTHERWISE NOTED
- R = RADIUS
 - L = ARC LENGTH
 - Δ = DELTA (CENTRAL ANGLE)
 - CD = CHORD DISTANCE
 - CB = CHORD BEARING
 - NO. = NUMBER
 - N. = NORTHING (STATE PLANE COORDINATES)
 - E. = EASTING (STATE PLANE COORDINATES)
 - € = CENTERLINE OF RIGHT OF WAY
 - O.R. = OFFICIAL RECORDS OF MARION COUNTY
 - R/W = RIGHT OF WAY LINE
 - LB = LICENSE SURVEYOR
 - LS = LAND SURVEYOR
 - PLS = PROFESSIONAL LAND SURVEYOR

PLAT BOOK 15, PAGE 151
SHEET 3 OF 8

- PG. = PAGE
- NR. = NON RADIAL
- P.B. = PLAT BOOK
- P.T. = POINT OF TANGENCY
- A.E. = ACCESS EASEMENT
- D.E. = DRAINAGE EASEMENT
- U.E. = UTILITY EASEMENT
- T.E. = TRAIL EASEMENT
- = SQUARE FOOTAGE OF LOT
- = PERMANENT REFERENCE MONUMENT FOUND 4" X 4" CONCRETE MONUMENT (LB 8071)
- = PERMANENT REFERENCE MONUMENT SET 4" X 4" CONCRETE MONUMENT (LB 8071)
- = PERMANENT CONTROL POINT SET NAIL & DISC NO. LB 8071



CURVE TABLE				CURVE TABLE				CURVE TABLE										
CURVE	LENGTH	RADIUS	DELTA	CHORD	BEARING	CURVE	LENGTH	RADIUS	DELTA	CHORD	BEARING	CURVE	LENGTH	RADIUS	DELTA	CHORD	BEARING	
C1	230.77	735.00	017°59'20"	229.82	S87°36'16"E	C37	38.50	605.00	003°38'46"	38.49	S89°34'10"E	C64	45.80	735.00	003°34'12"	45.79	N60°35'38"W	
C4	196.16	195.00	057°38'10"	187.99	S28°13'47"E	C38	38.92	605.00	003°41'10"	38.92	S73°14'08"E	C65	46.67	735.00	003°38'16"	46.66	N64°11'52"W	
C5	115.04	1005.00	006°33'31"	114.98	S53°46'08"E	C39	38.92	605.00	003°41'10"	38.92	S76°55'18"E	C66	46.26	735.00	003°36'21"	46.25	N67°49'12"W	
C6	305.62	580.00	039°04'54"	388.00	S70°01'48"E	C40	38.92	605.00	003°41'10"	38.92	S80°36'29"E	C67	48.86	735.00	003°39'10"	48.85	N71°26'58"W	
C21	36.74	25.00	084°11'29"	33.52	S47°19'21"E	C41	38.92	605.00	003°41'10"	38.92	S84°17'39"E	C68	42.63	735.00	003°39'24"	42.63	N74°56'15"W	
C22	29.63	220.00	007°42'59"	29.61	S03°16'11"E	C49	49.60	555.00	005°07'15"	49.59	N82°12'54"W	C69	46.32	720.00	003°41'10"	46.31	N80°36'29"W	
C23	36.89	220.00	009°36'30"	36.85	S11°55'56"E	C50	49.60	555.00	005°07'14"	49.58	N77°05'40"W	C70	33.83	440.00	004°47'43"	33.82	S87°10'23"E	
C24	36.89	220.00	009°36'30"	36.85	S21°32'26"E	C51	49.60	555.00	005°07'14"	49.58	N71°58'26"W	C71	39.32	440.00	005°07'14"	39.31	S82°12'54"E	
C25	36.89	220.00	009°36'30"	36.85	S31°08'56"E	C52	49.60	555.00	005°07'14"	49.58	N66°51'12"W	C72	39.32	440.00	005°07'14"	39.31	S77°05'40"E	
C26	36.89	220.00	009°36'30"	36.85	S40°45'26"E	C53	49.60	555.00	005°07'13"	49.58	N61°43'58"W	C73	39.32	440.00	005°07'14"	39.31	S71°58'26"E	
C27	36.89	220.00	009°36'30"	36.85	S50°21'55"E	C54	49.60	555.00	005°07'13"	49.58	N56°36'45"W	C74	39.32	440.00	005°07'13"	39.31	S86°51'12"E	
C28	7.21	220.00	001°52'42"	7.21	S56°16'31"E	C55	34.52	555.00	003°33'48"	34.51	N52°16'15"W	C75	40.20	39.32	440.00	005°07'13"	39.31	S61°43'58"E
C29	40.43	980.00	002°21'50"	40.43	S55°51'57"E	C56	22.49	1030.00	001°15'03"	22.49	N51°06'52"W	C76	27.36	440.00	003°33'48"	27.36	S52°16'15"E	
C30	45.29	980.00	002°38'52"	45.28	S53°21'36"E	C57	39.44	1030.00	002°11'37"	39.43	N52°50'15"W	C77	25.00	55.00	002°11'37"	25.00	S52°16'15"E	
C31	45.29	980.00	002°32'49"	45.28	S51°15'45"E	C58	39.44	1030.00	002°11'37"	39.43	N55°01'50"W	C78	25.00	1145.00	001°15'03"	25.00	S51°06'52"E	
C32	26.54	605.00	001°32'49"	26.54	S51°44'45"E	C59	16.54	1030.00	000°55'13"	16.54	N56°35'15"W	C79	44.00	1145.00	002°11'37"	43.84	S52°50'13"E	
C33	38.92	605.00	003°41'10"	38.91	S45°50'43"E	C60	77.53	1700.00	028°07'45"	76.86	N43°59'00"W	C80	43.84	1145.00	002°11'37"	43.84	S55°01'50"E	
C34	38.50	605.00	003°44'54"	38.57	S58°33'45"E	C61	93.48	1700.00	031°30'26"	92.31	N15°09'55"W	C81	48.39	1145.00	000°55'13"	48.39	S56°35'15"E	
C35	38.26	605.00	003°32'25"	38.26	S62°14'59"E	C62	36.95	25.00	084°40'59"	33.68	N48°14'26"E	C82	24.67	55.00	026°07'45"	24.67	S43°59'00"E	
C36	38.92	605.00	003°41'10"	38.92	S65°54'12"E	C63	2.55	735.00	000°11'56"	2.55	N58°42'54"W	C83	30.24	55.00	031°30'26"	29.86	S15°09'55"E	

LINE TABLE			LINE TABLE		
LINE	BEARING	LENGTH	LINE	BEARING	LENGTH
L1	N03°35'49"E	50.00	L14	N100°07'57"W	23.47
L2	N89°24'11"W	50.00	L15	N44°00'51"E	50.65
L3	S03°35'49"W	50.00	L16	N29°59'43"E	12.78
L4	S12°33'07"W	60.00	L17	S89°36'29"E	45.59
L5	S48°37'07"E	49.33	L18	S89°36'29"E	28.64
L6	S36°41'44"E	70.28	L19	S03°35'16"W	3.87
L7	S25°03'59"E	41.85	L20	S34°26'23"W	10.95
L8	S19°48'43"E	12.36	L21	S89°34'13"E	6.19
L9	S12°39'24"E	67.92	L22	N95°24'14"W	8.65
L10	N80°04'36"E	90.00	L23	N89°36'30"W	12.69
L11	N15°05'39"W	65.87	L24	S89°36'29"E	12.69
L12	N20°59'31"W	69.07	L25	S80°04'36"W	15.22
L13	N28°37'41"W	43.48	L26	N03°35'16"E	10.12

NOTE:
THIS PLAT IS 8 SHEETS IN TOTAL, AND ONE IS NOT COMPLETED WITHOUT THE OTHERS. FOR REVISIONS, NOTES AND ACKNOWLEDGMENTS SEE SHEET 1. FOR BOUNDARY DETAIL AND LEGAL DESCRIPTION SEE SHEET 2. FOR LOT DIMENSIONS SEE SHEETS 3, 4, 5, 6, 7, AND 8.

PREPARED BY: JCH CONSULTING GROUP, INC. 428 SW 15TH STREET, OCALA, FL 34471



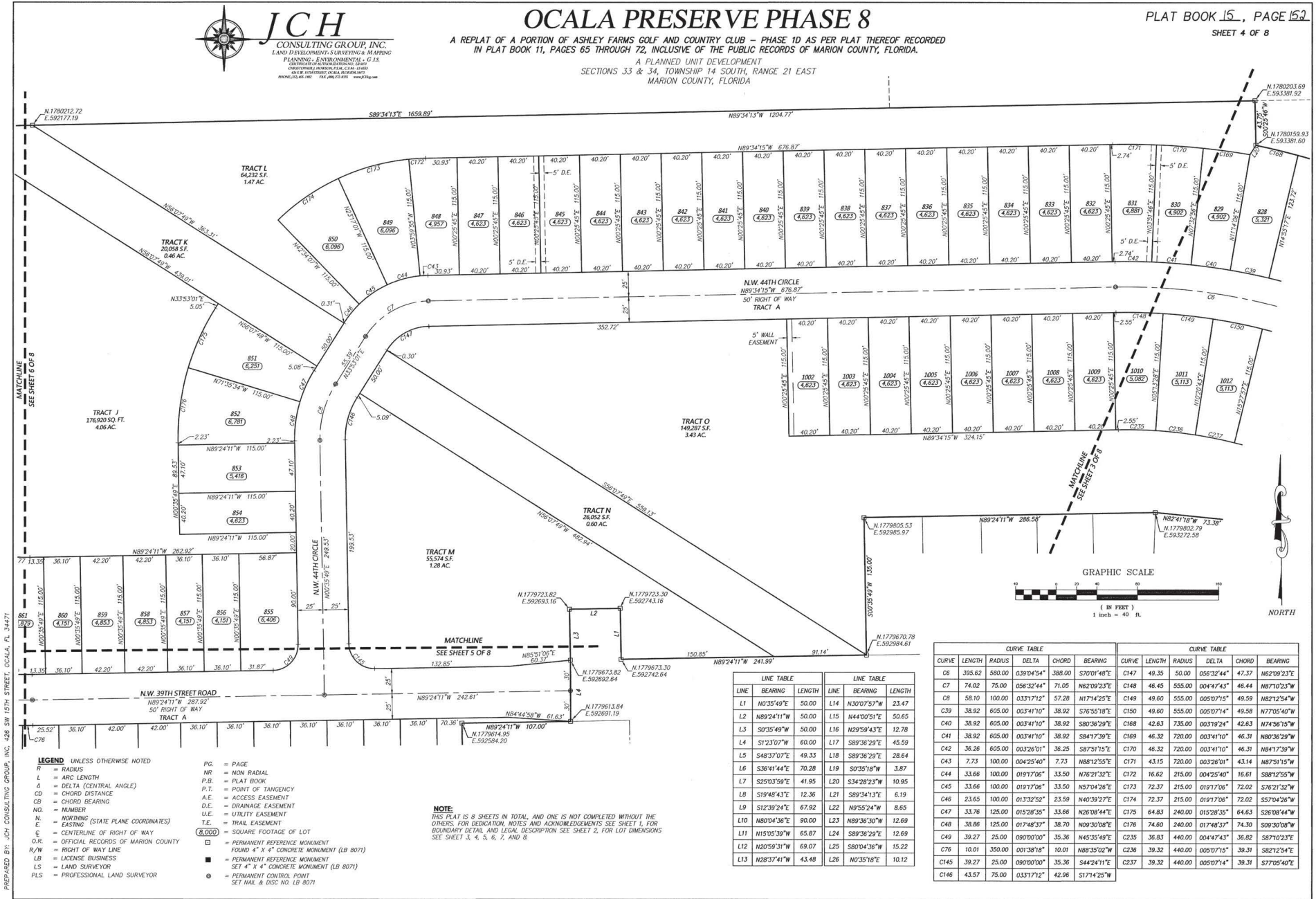
JCH
 CONSULTING GROUP, INC.
 LAND DEVELOPMENT SURVEYING & MAPPING
 PLANNING, ENVIRONMENTAL, & I.S.
 CONSULTING SERVICES
 10000 N.W. 11th Street, Suite 100
 Ocala, Florida 34476
 PHONE: 352.462.1100 FAX: 352.462.1101 WWW: JCH.COM

OCALA PRESERVE PHASE 8

A REPLAT OF A PORTION OF ASHLEY FARMS GOLF AND COUNTRY CLUB - PHASE 10 AS PER PLAT THEREOF RECORDED IN PLAT BOOK 11, PAGES 65 THROUGH 72, INCLUSIVE OF THE PUBLIC RECORDS OF MARION COUNTY, FLORIDA.

A PLANNED UNIT DEVELOPMENT
 SECTIONS 33 & 34, TOWNSHIP 14 SOUTH, RANGE 21 EAST
 MARION COUNTY, FLORIDA

PLAT BOOK 15, PAGE 152
 SHEET 4 OF 8

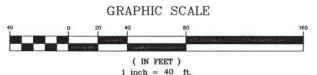


PREPARED BY: JCH CONSULTING GROUP, INC. 1426 SW 15TH STREET, OCALA, FL 34471

- LEGEND** UNLESS OTHERWISE NOTED
- R = RADIUS
 - A = ARC LENGTH
 - Δ = DELTA (CENTRAL ANGLE)
 - CD = CHORD DISTANCE
 - CB = CHORD BEARING
 - NO. = NUMBER
 - N. = NORTHING (STATE PLANE COORDINATES)
 - E. = EASTING
 - C.R. = CENTERLINE OF RIGHT OF WAY
 - O.R. = OFFICIAL RECORDS OF MARION COUNTY
 - R/W = RIGHT OF WAY LINE
 - LB = LICENSE BUSINESS
 - LS = LAND SURVEYOR
 - PLS = PROFESSIONAL LAND SURVEYOR
 - P.C. = PAGE
 - NR = NON RADIAL
 - P.B. = PLAT BOOK
 - P.T. = POINT OF TANGENCY
 - A.E. = ACCESS EASEMENT
 - D.E. = DRAINAGE EASEMENT
 - U.E. = UTILITY EASEMENT
 - T.E. = TRAIL EASEMENT
 - (8,000) = SQUARE FOOTAGE OF LOT
 - = PERMANENT REFERENCE MONUMENT
 - = FOUND 4" X 4" CONCRETE MONUMENT (LB 8071)
 - = PERMANENT REFERENCE MONUMENT SET 4" X 4" CONCRETE MONUMENT (LB 8071)
 - = PERMANENT CONTROL POINT SET 1/2" X 1/2" COPPER NAIL (LB 8071)

NOTE
 THIS PLAT IS 8 SHEETS IN TOTAL, AND ONE IS NOT COMPLETED WITHOUT THE OTHERS. FOR DEDICATION, NOTES AND ACKNOWLEDGEMENTS SEE SHEET 1, FOR BOUNDARY DETAIL AND LEGAL DESCRIPTION SEE SHEET 2, FOR LOT DIMENSIONS SEE SHEET 3, 4, 5, 6, 7, AND 8.

LINE TABLE			LINE TABLE		
LINE	BEARING	LENGTH	LINE	BEARING	LENGTH
L1	N03°54'49"E	50.00	L14	N130°07'57"W	23.47
L2	N89°24'11"W	50.00	L15	N44°00'51"E	50.65
L3	S03°54'49"W	50.00	L16	N29°59'43"E	12.78
L4	S12°30'7"W	60.00	L17	S89°36'29"E	45.59
L5	S48°37'07"E	49.33	L18	S89°36'29"E	28.84
L6	S36°41'44"E	70.28	L19	S03°54'49"W	3.87
L7	S25°03'59"E	41.95	L20	S34°28'23"W	10.95
L8	S19°48'43"E	12.36	L21	S89°34'13"E	6.19
L9	S12°39'24"E	67.92	L22	N89°55'24"W	8.65
L10	N80°04'36"E	90.00	L23	N89°36'30"W	12.69
L11	N15°05'39"W	65.87	L24	S89°36'29"E	12.69
L12	N20°59'31"W	69.07	L25	S80°04'36"W	15.22
L13	N28°37'41"W	43.48	L26	N03°54'49"E	10.12



CURVE TABLE				CURVE TABLE			
CURVE	LENGTH	RADIUS	CHORD	BEARING	CURVE	LENGTH	CHORD
C6	395.62	580.00	Q39°04'54"	S88.00	S70°01'48"E	C147	49.35
C7	74.02	75.00	Q56°32'44"	71.05	N82°09'23"E	C148	46.45
C8	58.10	100.00	Q33°17'12"	57.28	N171°42'25"E	C149	49.60
C9	38.92	605.00	Q03°41'10"	38.92	S76°55'18"E	C150	49.60
C10	38.92	605.00	Q03°41'10"	38.92	S80°36'29"E	C168	42.63
C11	36.92	605.00	Q03°41'10"	36.92	S84°17'39"E	C169	46.32
C12	36.26	605.00	Q03°26'01"	36.25	S87°51'15"E	C170	46.32
C13	7.73	100.00	Q04°25'40"	7.73	N88°12'55"E	C171	43.15
C14	33.66	100.00	Q19°17'06"	33.50	N76°21'32"E	C172	16.62
C15	33.66	100.00	Q19°17'06"	33.50	N57°04'26"E	C173	72.37
C16	23.65	100.00	Q13°32'52"	23.59	N40°39'27"E	C174	72.37
C17	33.76	125.00	Q15°28'35"	33.66	N26°08'44"E	C175	64.83
C18	38.86	125.00	Q17°48'37"	38.70	N09°30'08"E	C176	74.60
C19	39.27	25.00	Q90°00'00"	35.36	N45°35'49"E	C235	36.83
C26	10.01	350.00	Q01°38'18"	10.01	N88°35'02"W	C236	39.32
C145	39.27	25.00	Q90°00'00"	35.36	S44°24'11"E	C237	39.32
C146	43.57	75.00	Q33°17'12"	42.96	S174°25'W		



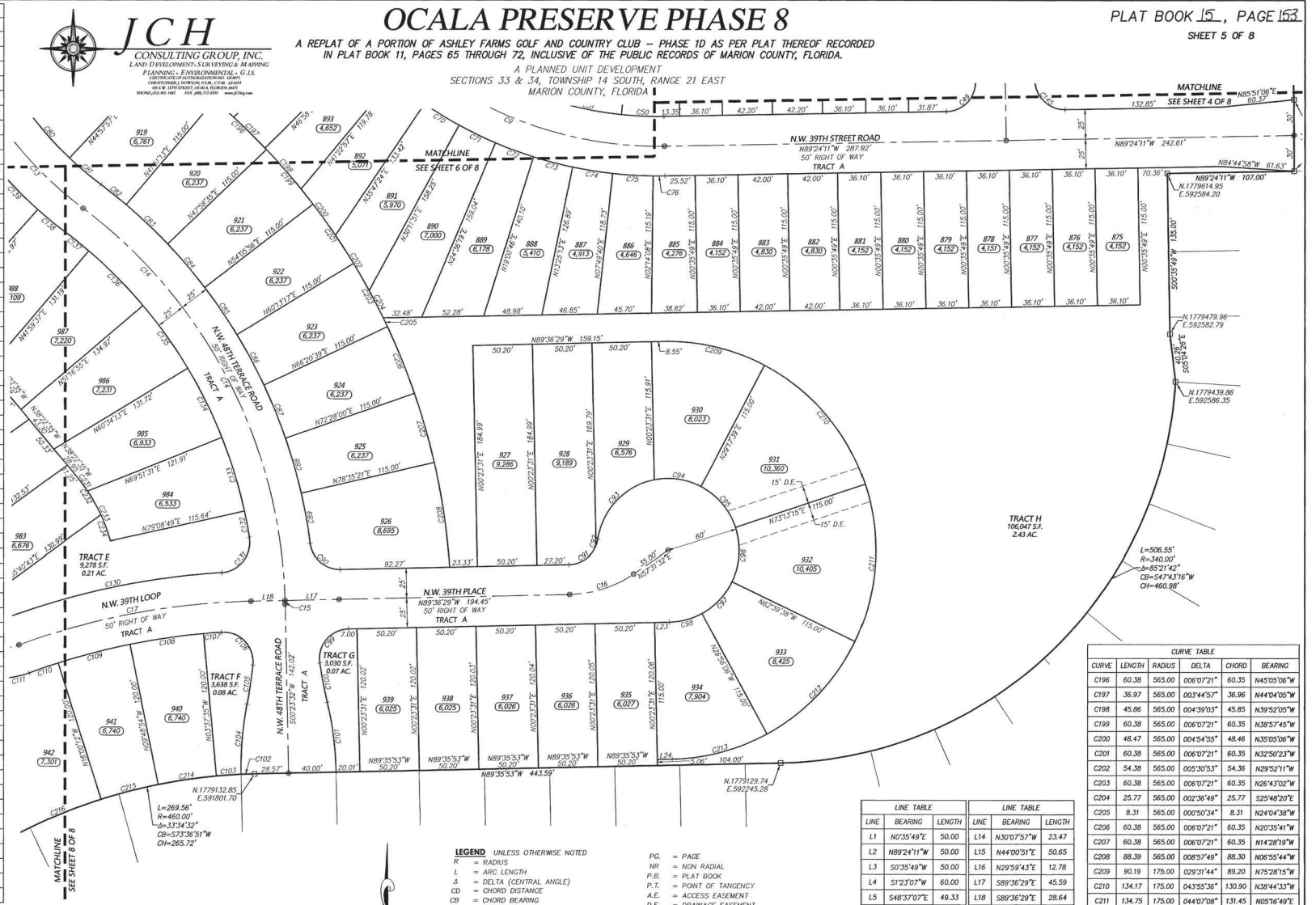
OCALA PRESERVE PHASE 8

A REPLAT OF A PORTION OF ASHLEY FARMS GOLF AND COUNTRY CLUB - PHASE 1D AS PER PLAT THEREOF RECORDED IN PLAT BOOK 11, PAGES 65 THROUGH 72, INCLUSIVE OF THE PUBLIC RECORDS OF MARION COUNTY, FLORIDA.

A PLANNED UNIT DEVELOPMENT
SECTIONS 33 & 34, TOWNSHIP 14 SOUTH, RANGE 21 EAST
MARION COUNTY, FLORIDA

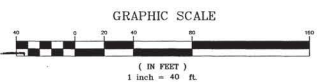


CURVE TABLE					
CURVE	LENGTH	RADIUS	DELTA	CHORD	BEARING
C9	266.97	325.00	047°03'58"	259.53	N65°52'17"W
C13	236.58	325.00	041°42'29"	231.39	S30°46'58"E
C14	382.90	425.00	051°37'14"	370.08	S25°49'15"E
C15	2.99	425.00	000°24'10"	2.99	S00°11'27"W
C16	57.36	100.00	032°51'59"	56.58	N73°57'32"E
C17	199.98	605.00	018°56'21"	199.07	N80°55'21"E
C49	39.27	25.00	090°00'00"	35.36	N45°35'49"E
C50	35.97	300.00	006°52'11"	35.95	S85°58'05"E
C51	57.17	300.00	010°55'10"	57.09	S77°04'25"E
C70	34.16	350.00	005°35'33"	34.15	N65°02'22"W
C71	34.16	350.00	005°35'33"	34.15	N62°35'59"W
C72	34.16	350.00	005°35'33"	34.15	N68°11'28"W
C73	34.16	350.00	005°35'33"	34.15	N73°47'01"W
C74	34.16	350.00	005°35'33"	34.15	N79°22'33"W
C75	34.16	350.00	005°35'33"	34.15	N84°58'06"W
C76	10.01	350.00	001°38'18"	10.01	N88°35'02"W
C80	55.50	300.00	010°35'57"	55.42	S39°44'04"E
C81	34.54	300.00	006°35'49"	34.52	S48°19'58"E
C82	27.37	450.00	003°29'06"	27.37	S49°53'19"E
C83	48.09	450.00	006°07'21"	48.06	S45°05'06"E
C84	48.09	450.00	006°07'21"	48.06	S38°57'45"E
C85	48.09	450.00	006°07'21"	48.06	S32°50'23"E
C86	48.09	450.00	006°07'21"	48.06	S26°43'02"E
C87	48.09	450.00	006°07'21"	48.06	S20°35'41"E
C88	48.09	450.00	006°07'21"	48.06	S14°28'19"E
C89	42.40	450.00	005°23'53"	42.38	S08°42'42"E
C90	36.48	25.00	083°35'43"	33.33	S47°48'37"E
C91	28.20	25.00	066°55'36"	27.57	N66°55'33"E
C92	5.63	25.00	012°54'13"	5.62	N17°00'29"E
C93	73.09	60.00	069°47'28"	68.65	N45°27'08"E
C94	40.79	60.00	038°56'49"	40.00	S80°10'43"E
C95	46.00	60.00	043°55'36"	44.88	S38°44'33"E
C96	46.20	60.00	044°07'07"	45.07	S05°16'49"W
C97	37.41	60.00	035°43'32"	36.81	S45°12'08"W
C98	28.62	60.00	027°19'37"	28.35	S76°43'43"W
C99	42.42	25.00	097°12'56"	37.51	S41°47'03"W
C100	33.55	400.00	004°48'19"	33.54	S09°13'34"E
C101	59.24	282.00	012°02'09"	59.13	S05°36'39"E
C102	11.43	460.00	001°25'25"	11.43	S89°41'29"W
C103	20.91	460.00	002°36'18"	20.91	N87°40'33"E
C104	59.28	282.00	012°02'41"	59.17	N06°28'53"E
C105	33.05	400.00	004°44'04"	33.04	N10°05'21"E
C106	43.57	25.00	099°50'40"	38.26	N42°12'01"W
C107	15.22	580.00	001°30'14"	15.22	S07°30'32"W
C108	62.64	580.00	006°11'18"	62.61	S83°16'46"W
C109	62.65	580.00	006°11'19"	62.62	S77°05'27"W
C110	25.75	580.00	002°32'38"	25.75	S72°43'29"W
C111	20.13	75.00	015°22'35"	20.07	S79°08'28"W
C130	184.16	630.00	016°44'31"	183.50	N79°49'37"E
C131	41.83	25.00	095°51'29"	37.12	N40°16'19"E
C132	22.31	400.00	003°11'45"	22.31	N09°15'18"W
C133	64.85	400.00	009°17'18"	64.77	N15°29'50"W
C134	64.85	400.00	009°17'18"	64.77	N24°47'08"W
C135	64.85	400.00	009°17'18"	64.77	N34°04'28"W
C136	64.85	400.00	009°17'18"	64.77	N43°21'14"W
C137	25.31	400.00	003°37'29"	25.30	N49°49'06"W
C138	30.00	350.00	004°54'43"	30.00	N49°10'31"W
C139	47.52	350.00	007°46'47"	47.49	N42°49'46"W
C45	39.27	25.00	090°00'00"	35.36	S44°24'11"E



PREPARED BY: JCH CONSULTING GROUP, INC. 426 SW 15TH STREET, OCALA, FL 34477

NOTE:
THIS PLAT IS 8 SHEETS IN TOTAL, AND ONE IS NOT COMPLETED WITHOUT THE OTHERS. FOR DEDICATION, NOTES AND ACKNOWLEDGMENTS SEE SHEET 1. FOR DIMENSIONS, DETAILS AND LEGAL DESCRIPTIONS SEE SHEET 2. FOR LOT DIMENSIONS SEE SHEET 3, 4, 5, 6, 7, AND 8.



LEGEND UNLESS OTHERWISE NOTED
 R = RADIUS
 L = ARC LENGTH
 Δ = DELTA (CENTRAL ANGLE)
 CD = CHORD DISTANCE
 CB = CHORD BEARING
 NO. = NUMBER
 N. = NORTHING (STATE PLANE COORDINATES)
 E. = EASTING
 C. = CENTERLINE OF RIGHT OF WAY
 O.R. = OFFICIAL RECORDS OF MARION COUNTY
 R/W = RIGHT OF WAY LINE
 LB = LICENSE BUSINESS
 LS = LAND SURVEYOR
 PLS = PROFESSIONAL LAND SURVEYOR

PG. = PAGE
 NR = NON RADIAL
 P.B. = PLAT BOOK
 P.T. = POINT OF TANGENCY
 A.E. = ACCESS EASEMENT
 D.E. = DRAINAGE EASEMENT
 U.E. = UTILITY EASEMENT
 T.E. = TRAIL EASEMENT
 L = TRAIL EASEMENT
 S = SQUARE FOOTAGE OF LOT
 PERMANENT REFERENCE MONUMENT FOUND 4" X 4" CONCRETE MONUMENT (LB 8071)
 PERMANENT REFERENCE MONUMENT SET 4" X 4" CONCRETE MONUMENT (LB 8071)
 PERMANENT REFERENCE POINT
 PERMANENT CONTROL POINT SET NAIL & DISC NO. LB 8071

LINE	BEARING	LENGTH	LINE	BEARING	LENGTH
L1	N03°35'49"E	50.00	L14	N30°07'57"W	23.47
L2	N89°24'11"W	50.00	L15	N44°00'31"E	50.65
L3	S03°35'49"E	50.00	L16	N29°59'43"E	12.78
L4	S12°07'07"W	60.00	L17	S89°36'29"E	25.59
L5	S48°37'07"E	49.33	L18	S89°36'29"E	48.64
L6	S38°41'44"E	70.28	L19	S03°35'18"W	3.87
L7	S25°03'59"E	41.95	L20	S34°28'23"W	10.95
L8	S19°48'43"E	12.36	L21	S89°34'13"E	6.19
L9	S12°39'24"E	69.92	L22	N95°52'44"W	8.65
L10	N80°04'36"E	90.00	L23	N89°36'30"W	12.69
L11	N15°05'39"W	65.87	L24	S89°36'29"E	12.69
L12	N20°59'31"W	69.07	L25	S80°04'36"W	15.22
L13	N28°37'41"W	43.48	L26	N03°35'18"E	10.12

CURVE	LENGTH	RADIUS	DELTA	CHORD	BEARING
C196	60.38	565.00	006°07'21"	60.35	N45°05'06"W
C197	36.97	565.00	003°44'57"	36.96	N44°04'05"W
C198	45.86	565.00	004°39'03"	45.85	N39°52'05"W
C199	60.38	565.00	006°07'21"	60.35	N38°57'45"W
C200	48.47	565.00	004°54'55"	48.46	N35°05'08"W
C201	60.38	565.00	006°07'21"	60.35	N32°50'23"W
C202	54.38	565.00	005°30'53"	54.36	N29°52'11"W
C203	60.38	565.00	006°07'21"	60.35	N26°43'02"W
C204	25.77	565.00	002°36'49"	25.77	S25°48'20"E
C205	8.31	565.00	000°50'34"	8.31	N24°04'38"W
C206	60.38	565.00	006°07'21"	60.35	N20°35'41"W
C207	60.38	565.00	006°07'21"	60.35	N14°28'19"W
C208	88.39	565.00	006°57'49"	88.30	N06°55'44"W
C209	90.19	175.00	029°31'44"	89.20	N75°28'15"W
C210	134.17	175.00	043°55'36"	130.90	N45°04'33"W
C211	134.75	175.00	044°07'08"	131.45	N05°16'49"E
C212	109.12	175.00	035°43'32"	107.36	N45°12'09"E
C213	83.46	175.00	027°19'36"	82.68	N76°43'43"E
C214	49.68	460.00	006°11'18"	49.66	N83°16'46"E
C215	49.68	460.00	006°11'19"	49.66	N77°05'27"E
C216	75.07	460.00	009°21'01"	74.98	N69°19'17"E
C231	16.38	150.00	006°15'18"	16.37	S35°45'7"E
C232	39.16	150.00	014°57'31"	39.05	N30°53'50"W
C233	46.15	150.00	017°37'39"	45.97	N23°18'28"W
C234	23.36	150.00	008°55'26"	23.34	N18°57'22"W

NORTH



JCH
CONSULTING GROUP, INC.
LAND DEVELOPMENT SURVEYING & MEASURING
PLANNING & ENVIRONMENTAL, P.L.L.C.
CORPORATE HEADQUARTERS, P.O. BOX 1000
1000 W. UNIVERSITY BLVD., SUITE 1000
ORLANDO, FL 32801
TEL: (407) 253-1100 FAX: (407) 253-1101 WWW: JCH.COM

OCALA PRESERVE PHASE 8

A REPLAT OF A PORTION OF ASHLEY FARMS GOLF AND COUNTRY CLUB - PHASE 1D AS PER PLAT THEREOF RECORDED IN PLAT BOOK 11, PAGES 65 THROUGH 72, INCLUSIVE OF THE PUBLIC RECORDS OF MARION COUNTY, FLORIDA.

A PLANNED UNIT DEVELOPMENT
SECTIONS 33 & 34, TOWNSHIP 14 SOUTH, RANGE 21 EAST
MARION COUNTY, FLORIDA

PLAT BOOK 15, PAGE 154
SHEET 6 OF 8

CURVE TABLE				
CURVE	LENGTH	RADIUS	DELTA	CHORD BEARING
C2	39.29	25.00	090°03'19"	35.37 N35°02'57"E
C3	11.22	400.00	001°36'25"	11.22 N10°46'55"W
C9	266.97	325.00	047°03'58"	259.53 N65°32'12"W
C10	78.64	140.00	032°35'28"	78.57 N26°13'08"W
C11	80.12	115.00	039°55'04"	78.51 N10°02'09"E
C12	12.32	425.00	001°39'38"	12.32 S10°45'08"E
C13	236.58	325.00	041°42'29"	231.39 S30°46'39"E
C14	382.90	425.00	051°37'14"	370.08 S25°49'15"E
C50	35.97	300.00	006°52'11"	35.95 S85°38'05"E
C51	57.17	300.00	010°55'10"	57.09 S77°04'25"E
C52	57.33	300.00	010°56'57"	57.24 S66°08'22"E
C53	59.83	300.00	011°26'42"	59.83 S54°56'32"E
C54	36.08	300.00	006°53'24"	36.05 S45°46'29"E
C55	65.41	115.00	032°35'28"	64.54 S26°13'08"E
C56	33.54	25.00	076°52'14"	31.08 S28°30'43"W
C57	1.29	25.00	002°57'55"	1.29 S68°25'48"W
C58	51.76	60.00	049°25'28"	50.17 S45°12'01"W
C59	36.70	60.00	035°03'02"	36.14 S68°07'46"W
C60	46.67	60.00	044°33'53"	45.50 S36°50'42"E
C61	63.76	60.00	060°53'12"	60.80 S89°34'14"E
C62	45.95	60.00	043°52'35"	44.83 N36°02'53"E
C63	27.26	60.00	026°01'59"	27.03 N03°05'36"E
C64	33.15	165.00	011°30'43"	33.10 N15°40'45"W
C65	38.19	165.00	013°15'43"	38.11 N28°03'58"W
C66	22.51	165.00	007°49'02"	22.49 N38°36'21"W
C67	4.17	350.00	000°40'55"	4.17 N42°41'03"W
C68	34.16	350.00	005°35'33"	34.15 N45°49'17"W
C69	34.16	350.00	005°35'33"	34.15 N51°24'50"W
C70	34.16	350.00	005°35'33"	34.15 N57°00'22"W
C71	34.16	350.00	005°35'33"	34.15 N62°35'55"W
C72	34.16	350.00	005°35'33"	34.15 N68°11'28"W
C73	34.16	350.00	005°35'33"	34.15 N73°47'01"W
C74	34.16	350.00	005°35'33"	34.15 N79°22'33"W
C75	34.16	350.00	005°35'33"	34.15 N84°58'06"W
C76	10.01	350.00	001°38'18"	10.01 N88°35'02"W
C77	13.00	450.00	001°38'18"	13.00 S10°45'08"E
C78	55.60	300.00	010°37'10"	55.52 S15°33'59"E
C79	72.74	300.00	013°33'32"	72.56 S27°29'20"E
C80	55.50	300.00	010°35'57"	55.42 S39°44'04"E
C81	34.54	300.00	006°35'49"	34.52 S48°19'58"E
C82	27.37	450.00	003°29'08"	27.37 S49°53'19"E
C83	48.09	450.00	006°07'21"	48.06 S45°05'06"E
C84	48.09	450.00	006°07'21"	48.06 S38°57'45"E
C85	48.09	450.00	006°07'21"	48.06 S32°50'23"E
C136	64.85	400.00	009°17'18"	64.77 N43°21'44"W
C137	25.31	400.00	003°37'29"	25.30 N49°49'08"W
C138	30.00	350.00	004°54'43"	30.00 N49°10'31"W
C139	47.52	350.00	007°46'47"	47.49 N42°49'46"W
C140	47.52	350.00	007°46'47"	47.49 N35°03'00"W
C141	47.52	350.00	007°46'47"	47.49 N27°16'13"W

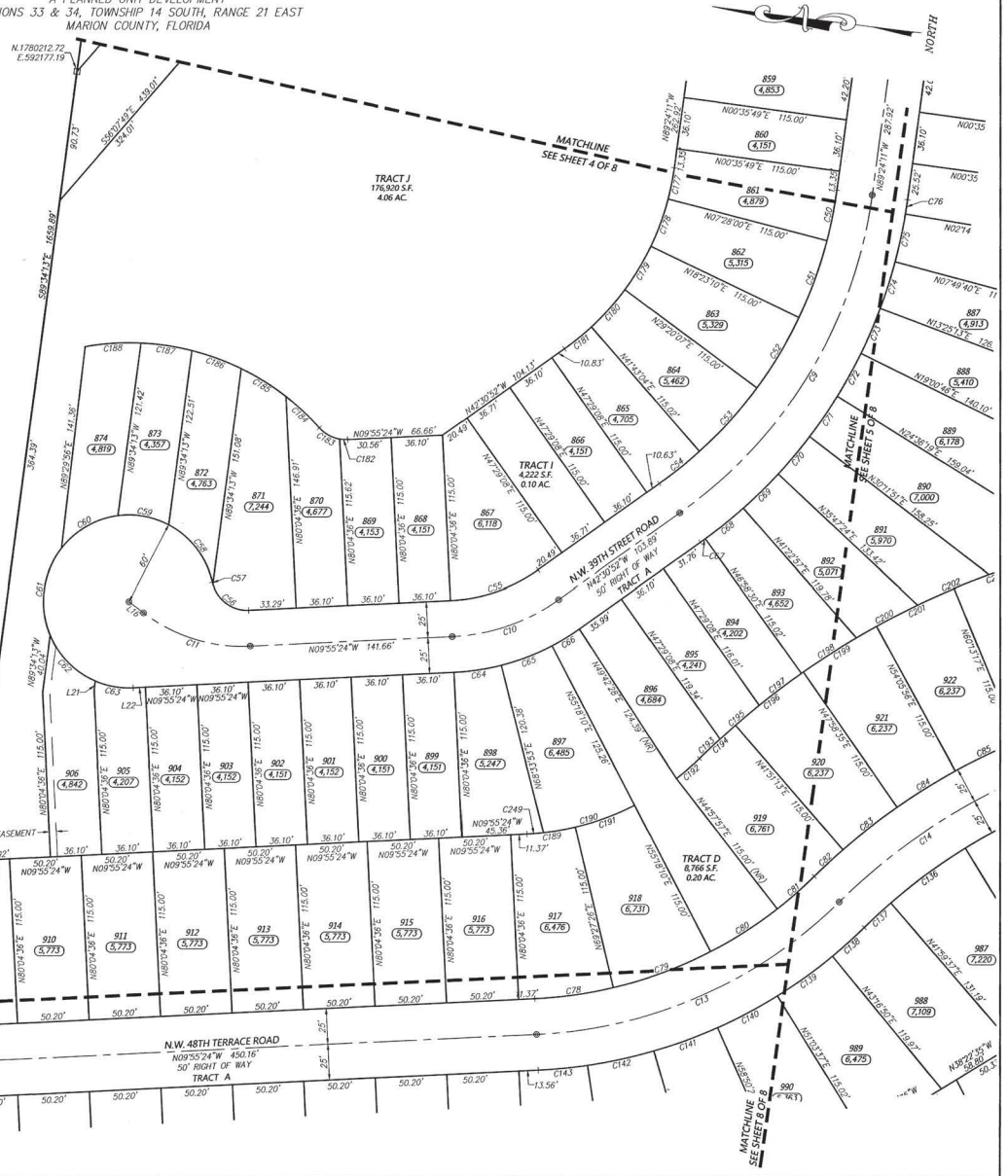
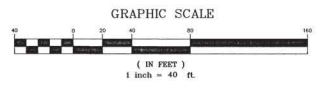
CURVE TABLE				
CURVE	LENGTH	RADIUS	DELTA	CHORD BEARING
C142	47.52	350.00	007°46'47"	47.49 N19°29'28"W
C143	34.68	350.00	005°40'39"	34.67 N12°45'43"W
C144	39.27	25.00	090°00'00"	35.36 N54°55'24"W
C177	22.18	185.00	006°52'11"	22.17 N85°58'05"W
C178	35.26	185.00	010°55'10"	35.20 N77°04'25"W
C179	35.35	185.00	010°56'58"	35.30 N66°08'22"W
C180	35.07	185.00	010°51'43"	35.02 N55°11'01"W
C181	24.29	185.00	007°31'25"	24.27 N46°02'27"W
C182	5.58	25.00	012°47'42"	5.57 N03°31'33"W
C183	16.78	25.00	038°27'08"	16.46 N22°05'52"E
C184	31.65	180.00	010°04'27"	31.61 N35°36'58"E
C185	37.10	180.00	011°48'33"	37.03 N24°40'28"E
C186	37.03	180.00	011°47'18"	36.97 N12°52'33"E
C187	36.16	180.00	011°30'41"	36.10 N01°13'33"E
C188	39.33	180.00	012°31'11"	39.25 N10°47'23"E
C189	34.29	185.00	010°37'10"	34.24 S15°33'59"E
C190	67.01	185.00	020°45'16"	66.65 S23°53'41"E
C191	44.33	185.00	013°43'45"	44.22 N27°24'26"W
C192	21.30	185.00	006°35'49"	21.29 S48°19'58"E
C193	19.84	565.00	002°00'42"	19.84 N50°37'31"W
C194	34.36	565.00	003°29'08"	34.36 N49°53'19"W
C195	36.26	565.00	003°40'37"	36.25 N47°46'52"W
C196	60.38	565.00	006°07'21"	60.35 N45°05'06"W
C197	36.97	565.00	003°44'57"	36.96 N44°04'05"W
C198	45.86	565.00	004°39'03"	45.85 N39°52'05"W
C199	60.38	565.00	006°07'21"	60.35 N38°57'45"W
C200	48.47	565.00	004°54'55"	48.46 N35°05'06"W
C201	60.38	565.00	006°07'21"	60.35 N32°50'23"W
C202	54.38	565.00	005°30'53"	54.38 N29°52'11"W
C203	60.38	565.00	006°07'21"	60.35 N26°43'02"W
C249	11.61	185.00	003°35'39"	11.60 S11°43'13"E

LINE TABLE			LINE TABLE		
LINE	BEARING	LENGTH	LINE	BEARING	LENGTH
L1	N0°35'49"E	50.00	L14	N30°07'57"W	23.47
L2	N89°24'11"W	50.00	L15	N44°00'51"E	50.65
L3	S0°35'49"W	50.00	L16	N29°59'43"E	12.78
L4	S1°23'07"W	60.00	L17	S89°36'28"E	45.59
L5	S48°37'07"E	49.33	L18	S89°36'28"E	28.64
L6	S36°41'44"E	70.28	L19	S0°35'18"W	3.67
L7	S25°03'59"E	41.95	L20	S34°28'23"W	10.95
L8	S19°48'43"E	12.36	L21	S89°34'13"E	6.19
L9	S12°39'24"E	67.92	L22	N0°55'24"W	8.65
L10	N80°04'36"E	90.00	L23	N89°36'30"W	12.69
L11	N15°05'39"W	65.87	L24	S89°36'28"E	12.69
L12	N20°59'31"W	69.07	L25	S80°04'36"W	15.22
L13	N28°37'41"W	43.48	L26	N0°35'18"E	10.12

LEGEND UNLESS OTHERWISE NOTED

- R = RADIUS
- L = ARC LENGTH
- Δ = DELTA (CENTRAL ANGLE)
- CD = CHORD DISTANCE
- CB = CHORD BEARING
- N.O. = NUMBER
- N = NORTHING (STATE PLANE COORDINATES)
- E. = EASTING (STATE PLANE COORDINATES)
- C. = CENTERLINE OF RIGHT OF WAY
- O.R. = OFFICIAL RECORDS OF MARION COUNTY
- R/W = RIGHT OF WAY LINE
- LB = LICENSE BUSINESS
- LS = LAND SURVEYOR
- P.L.S. = PROFESSIONAL LAND SURVEYOR
- PG. = PAGE
- NR = NODI RADIAL
- P.B. = PLAT BOOK
- P.T.I. = POINT OF TANGENCY
- A.E. = ACCESS EASEMENT
- D.E. = DRAINAGE EASEMENT
- U.E. = UTILITY EASEMENT
- T.E. = TRAIL EASEMENT
- S.O. = SQUARE FOOTAGE OF LOT
- = PERMANENT REFERENCE MONUMENT FOUND 4" X 4" CONCRETE MONUMENT (LB 8071)
- = PERMANENT REFERENCE MONUMENT SET 4" X 4" CONCRETE MONUMENT (LB 8071)
- = PERMANENT CONTROL POINT SET NAIL & DISC NO. LB 8071

NOTE: THIS PLAT IS 8 SHEETS IN TOTAL AND ONE IS NOT COMPLETED WITHOUT THE OTHERS. FOR DETAIL NOTES AND ACKNOWLEDGMENTS SEE SHEET 1, FOR BOUNDARY DETAIL AND LEGAL DESCRIPTION SEE SHEET 2, FOR LOT DIMENSIONS SEE SHEET 3, 4, 5, 6, 7, AND 8.



PREPARED BY: JCH CONSULTING GROUP, INC. 426 SW 15TH STREET, OCALA, FL 34471

OCALA PRESERVE PHASE 8

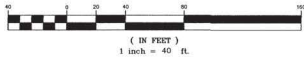
A REPLAT OF A PORTION OF ASHLEY FARMS GOLF AND COUNTRY CLUB - PHASE 1D AS PER PLAT THEREOF RECORDED IN PLAT BOOK 11, PAGES 65 THROUGH 72, INCLUSIVE OF THE PUBLIC RECORDS OF MARION COUNTY, FLORIDA.

A PLANNED UNIT DEVELOPMENT
 SECTIONS 33 & 34, TOWNSHIP 14 SOUTH, RANGE 21 EAST
 MARION COUNTY, FLORIDA



NOTE:
 THIS PLAT IS 8 SHEETS IN TOTAL, AND ONE IS NOT COMPLETED WITHOUT THE OTHERS. FOR DEDICATION, NOTES AND ACKNOWLEDGMENTS SEE SHEET 1. FOR BOUNDARY DETAIL AND LEGAL DESCRIPTION SEE SHEET 2. FOR LOT DIMENSIONS SEE SHEET 3, 4, 5, 6, 7, AND 8.

GRAPHIC SCALE



LINE	BEARING	LENGTH	LINE	BEARING	LENGTH
L1	N0°35'49"E	50.00	L14	N30°07'57"W	23.47
L2	N89°24'11"W	50.00	L15	N44°00'51"E	50.65
L3	S0°35'49"W	50.00	L16	N29°59'43"E	12.78
L4	S12°03'07"W	60.00	L17	S89°36'29"E	45.59
L5	S48°37'07"E	49.33	L18	S89°36'29"E	28.64
L6	S36°41'44"E	70.28	L19	S0°35'18"W	3.87
L7	S25°03'59"E	41.95	L20	S34°28'23"W	10.95
L8	S18°48'43"E	12.36	L21	S89°34'13"E	6.19
L9	S12°39'24"E	67.92	L22	N9°55'24"W	8.65
L10	N8°04'36"E	90.00	L23	N89°36'30"W	12.69
L11	N15°05'39"W	65.87	L24	S89°36'29"E	12.69
L12	N20°59'31"W	69.07	L25	S8°04'36"W	15.22
L13	N28°37'41"W	43.48	L26	N0°35'18"E	10.12

CURVE	LENGTH	RADIUS	DELTA	CHORD	BEARING
C3	11.22	400.00	001°36'25"	11.22	N10°46'55"W
C12	12.32	425.00	001°39'38"	12.32	S10°45'08"E
C13	236.58	325.00	041°42'29"	231.39	S30°46'38"E
C14	382.90	425.00	051°37'14"	370.08	S25°49'15"E
C19	257.63	605.00	024°23'53"	255.68	S22°07'20"E
C20	78.54	50.00	090°00'00"	70.71	S35°04'36"W
C27	13.00	450.00	001°39'18"	13.00	S10°45'08"E
C78	55.60	300.00	010°37'10"	55.52	S15°13'59"W
C79	72.74	300.00	013°53'32"	72.56	S27°29'20"E
C80	55.50	300.00	010°35'33"	55.42	S39°44'04"E
C114	40.74	630.00	003°42'17"	40.73	N23°28'08"W
C115	58.37	630.00	005°18'30"	58.35	N27°57'45"W
C116	58.37	630.00	005°18'30"	58.35	N22°39'14"W
C117	58.37	630.00	005°18'30"	58.35	N17°20'44"W
C118	52.43	630.00	004°46'06"	52.41	N12°18'26"W

CURVE	LENGTH	RADIUS	DELTA	CHORD	BEARING
C119	21.80	75.00	016°39'27"	21.73	N01°35'40"W
C120	54.14	75.00	041°21'40"	52.97	N27°24'53"E
C121	41.66	75.00	031°58'53"	41.32	N64°05'10"E
C122	39.27	25.00	090°00'00"	35.36	S35°04'36"W
C123	14.73	580.00	001°27'19"	14.73	S10°39'03"E
C124	61.98	580.00	006°07'21"	61.95	S14°26'24"E
C125	61.98	580.00	006°07'21"	61.95	S20°33'45"E
C126	61.98	580.00	006°07'21"	61.95	S28°41'08"E
C127	46.31	580.00	004°34'30"	46.30	S32°02'02"E
C137	25.31	400.00	003°37'29"	25.30	N49°49'08"W
C138	30.00	350.00	004°54'43"	30.00	N49°10'31"W
C139	47.52	350.00	007°46'47"	47.49	N42°49'46"W
C140	47.52	350.00	007°46'47"	47.49	N35°03'00"W
C141	47.52	350.00	007°46'47"	47.49	N27°18'13"W
C142	47.52	350.00	007°46'47"	47.49	N19°29'26"W

CURVE	LENGTH	RADIUS	DELTA	CHORD	BEARING
C143	34.68	350.00	005°40'39"	34.67	N12°45'13"W
C144	39.27	25.00	090°00'00"	35.36	N54°55'24"W
C218	55.24	190.00	016°39'27"	55.04	S01°35'40"E
C219	137.16	190.00	041°21'40"	134.20	S27°24'53"W
C220	106.05	190.00	031°58'53"	104.68	S64°05'10"W
C221	11.81	465.00	001°27'19"	11.81	S10°39'03"E
C222	46.08	465.00	005°40'39"	46.06	S12°45'43"E
C223	49.69	465.00	006°07'21"	49.67	S14°26'24"E
C224	63.14	465.00	007°46'47"	63.09	S19°29'26"E
C225	49.69	465.00	006°07'21"	49.67	S20°33'45"E
C226	49.69	465.00	006°07'21"	49.67	S28°41'06"E
C227	63.14	465.00	007°46'47"	63.09	S27°18'13"E
C228	58.57	465.00	007°12'59"	58.53	S34°46'06"E
C229	49.82	465.00	006°08'21"	49.80	S32°48'58"E
C230	20.22	465.00	002°29'27"	20.21	S37°07'52"E

LEGEND UNLESS OTHERWISE NOTED
 R = RADIUS
 L = ARC LENGTH
 A = DELTA (CENTRAL ANGLE)
 CD = CHORD DISTANCE
 CB = CHORD BEARING
 NO. = NUMBER
 N. = NORTHING (STATE PLANE COORDINATES)
 E. = EASTING (STATE PLANE COORDINATES)
 C = CENTERLINE OF RIGHT OF WAY
 O.R. = OFFICIAL RECORDS OF MARION COUNTY
 R/W = RIGHT OF WAY LINE
 LB = LICENSE BUSINESS
 LS = LAND SURVEYOR
 PLS = PROFESSIONAL LAND SURVEYOR
 P.C. = PAGE
 NR = NON RADIAL
 P.B. = PLAT BOOK
 P.O.T. = POINT OF TANGENCY
 A.E. = ACCESS EASEMENT
 D.E. = DRAINAGE EASEMENT
 U.E. = UTILITY EASEMENT
 T.E. = TRAIL EASEMENT
 (8,000) = SQUARE FOOTAGE OF LOT
 □ = PERMANENT REFERENCE MONUMENT
 ■ = FOUND 4" x 4" CONCRETE MONUMENT (LB 8071)
 ○ = PERMANENT REFERENCE MONUMENT SET 4" x 4" CONCRETE MONUMENT (LB 8071)
 ● = PERMANENT CONTROL POINT SET MAIL & BCC NO. LB 8071



OCALA PRESERVE PHASE 8

A REPLAT OF A PORTION OF ASHLEY FARMS GOLF AND COUNTRY CLUB - PHASE 10 AS PER PLAT THEREOF RECORDED IN PLAT BOOK 11, PAGES 65 THROUGH 72, INCLUSIVE, OF THE PUBLIC RECORDS OF MARION COUNTY, FLORIDA.

A PLANNED UNIT DEVELOPMENT
SECTIONS 33 & 34, TOWNSHIP 14 SOUTH, RANGE 21 EAST
MARION COUNTY, FLORIDA

PLAT BOOK 15, PAGE 150
SHEET 8 OF 8

CURVE TABLE					
CURVE	LENGTH	RADIUS	DELTA	CHORD	BEARING
C13	236.58	325.00	041°42'29"	231.39	S30°46'38"E
C14	382.90	425.00	051°37'14"	370.08	S25°49'15"E
C15	2.99	425.00	000°24'10"	2.99	S00°11'27"W
C17	199.88	695.00	018°56'21"	199.07	N80°59'21"E
C18	64.77	50.00	074°13'33"	60.34	S71°26'03"E
C19	257.63	605.00	024°23'51"	255.68	S22°07'20"E
C20	55.60	300.00	010°17'10"	55.52	S15°13'59"E
C78	72.74	300.00	0135°33'2"	72.56	S27°29'20"E
C80	55.50	300.00	010°15'57"	55.42	S39°44'04"E
C81	34.54	300.00	006°35'49"	34.52	S48°19'58"E
C82	27.37	450.00	003°29'06"	27.37	S49°31'97"E
C83	48.09	450.00	006°07'21"	48.06	S45°05'06"E
C84	48.09	450.00	006°07'21"	48.06	S38°57'45"E
C85	48.09	450.00	006°07'21"	48.06	S32°50'23"E
C86	48.09	450.00	006°07'21"	48.06	S26°43'02"E
C87	48.09	450.00	006°07'21"	48.06	S20°35'41"E
C88	48.09	450.00	006°07'21"	48.06	S14°28'19"E
C89	42.40	450.00	005°23'53"	42.38	S08°14'42"E
C90	36.48	25.00	083°35'43"	33.33	S47°48'37"E
C99	42.42	25.00	097°12'56"	37.51	S41°47'03"W
C100	33.55	400.00	004°48'19"	33.54	S09°13'34"E
C101	59.24	282.00	012°02'09"	59.13	S09°36'39"E
C102	11.43	460.00	001°25'25"	11.43	S89°41'25"W
C103	20.91	460.00	002°36'18"	20.91	N87°40'13"E
C104	59.28	282.00	012°02'41"	59.17	N06°26'03"E
C105	33.05	400.00	004°44'04"	33.04	N10°05'21"E
C106	43.57	25.00	099°50'40"	38.26	N42°12'01"W
C107	15.22	580.00	001°30'14"	15.22	S87°07'32"W
C108	62.64	580.00	006°11'18"	62.61	S83°16'46"W
C109	62.65	580.00	006°11'19"	62.62	S77°05'27"W
C110	25.75	580.00	002°32'38"	25.75	S72°43'29"W
C111	20.13	75.00	015°22'35"	20.07	S79°08'28"W
C112	40.11	75.00	030°38'24"	39.63	N77°51'03"W
C113	36.93	75.00	028°12'34"	36.55	N48°25'34"W
C114	40.74	630.00	003°42'17"	40.73	N32°28'08"W
C115	58.37	630.00	005°18'30"	58.35	N27°57'45"W
C116	58.37	630.00	005°18'30"	58.35	N22°39'14"W
C117	58.37	630.00	005°18'30"	58.35	N17°20'44"W
C118	52.43	630.00	004°46'06"	52.41	N12°18'26"W
C123	14.73	580.00	001°27'18"	14.73	S10°39'03"E
C124	61.98	580.00	006°07'21"	61.95	S14°26'24"E
C125	61.98	580.00	006°07'21"	61.95	S20°33'45"E
C126	61.98	580.00	006°07'21"	61.95	S26°41'06"E
C127	46.31	580.00	004°34'30"	46.30	S32°02'02"E
C128	0.50	25.00	001°09'08"	0.50	S34°51'51"E
C129	31.88	25.00	073°04'28"	29.77	S70°00'34"E
C130	184.16	630.00	016°44'53"	183.50	N79°49'37"E
C131	41.83	25.00	095°51'29"	37.12	N40°16'19"E
C132	22.31	400.00	003°11'45"	22.31	N09°51'16"W
C133	64.85	400.00	009°17'18"	64.77	N15°29'50"W
C134	64.85	400.00	009°17'18"	64.77	N24°47'08"W
C135	64.85	400.00	009°17'18"	64.77	N34°04'26"W

CURVE TABLE					
CURVE	LENGTH	RADIUS	DELTA	CHORD	BEARING
C136	64.85	400.00	009°17'18"	64.77	N43°21'44"W
C137	25.31	400.00	003°37'29"	25.30	N49°49'08"W
C138	30.00	350.00	004°54'43"	30.00	N49°10'31"W
C139	47.52	350.00	007°46'47"	47.49	N42°49'46"W
C140	47.52	350.00	007°46'47"	47.49	N35°03'00"W
C141	47.52	350.00	007°46'47"	47.49	N27°16'13"W
C142	47.52	350.00	007°46'47"	47.49	N19°29'26"W
C143	34.68	350.00	005°40'39"	34.67	N12°45'43"W
C214	49.68	460.00	006°11'18"	49.66	N83°16'46"E
C215	49.68	460.00	006°11'19"	49.66	N77°05'27"E
C216	75.07	460.00	009°21'01"	74.98	N69°19'17"E
C217	62.78	460.00	007°49'12"	62.74	N60°44'11"E
C221	11.81	465.00	001°27'19"	11.81	S10°39'03"E
C222	46.08	465.00	005°40'39"	46.06	S12°45'43"E
C223	49.69	465.00	006°07'21"	49.67	S14°26'24"E
C224	63.14	465.00	007°46'47"	63.09	S19°29'26"E
C225	49.69	465.00	006°07'21"	49.67	S20°33'45"E
C226	49.69	465.00	006°07'21"	49.67	S26°41'06"E
C227	63.14	465.00	007°46'47"	63.09	S27°16'13"E
C228	58.57	465.00	007°12'59"	58.53	S34°46'06"E
C229	49.82	465.00	006°08'21"	49.80	S32°48'58"E
C230	20.22	465.00	002°29'27"	20.21	S37°07'52"E
C231	16.38	150.00	006°15'18"	16.37	S35°14'57"E
C232	39.16	150.00	014°57'31"	39.05	N30°53'50"W
C233	46.15	150.00	017°37'39"	45.97	N23°18'28"W
C234	23.36	150.00	008°55'26"	23.34	N18°57'22"W

LINE TABLE			LINE TABLE		
LINE	BEARING	LENGTH	LINE	BEARING	LENGTH
L1	N0°35'49"E	50.00	L14	N30°10'57"W	23.47
L2	N89°24'11"W	50.00	L15	N44°00'51"E	50.65
L3	S0°35'49"W	50.00	L16	N29°59'43"E	12.78
L4	S12°37'07"E	60.00	L17	S89°36'29"E	45.59
L5	S48°37'07"E	49.33	L18	S89°36'29"E	28.64
L6	S36°41'44"E	70.28	L19	S0°51'18"W	3.87
L7	S25°03'59"E	41.95	L20	S34°28'23"W	10.95
L8	S19°48'43"E	12.36	L21	S89°34'13"E	6.19
L9	S12°39'24"E	67.92	L22	N9°55'24"W	8.65
L10	N80°04'36"E	90.00	L23	N89°36'30"W	12.69
L11	N15°05'38"W	65.87	L24	S89°36'29"E	12.69
L12	N20°59'31"W	69.07	L25	S80°04'36"W	15.22
L13	N28°37'41"W	43.48	L26	N0°35'18"E	10.12

LEGEND
 R = RADIUS
 L = ARC LENGTH
 Δ = DELTA (CENTRAL ANGLE)
 CD = CHORD DISTANCE
 CB = CHORD BEARING
 NO. = NUMBER
 N. = NORTHING (STATE PLANE COORDINATES)
 E. = EASTING
 C. = CENTERLINE OF RIGHT OF WAY
 O.R. = OFFICIAL RECORDS OF MARION COUNTY
 R/W = RIGHT OF WAY LINE
 LB = LICENSE BUSINESS
 LS = LAND SURVEYOR
 PLS = PROFESSIONAL LAND SURVEYOR
 PCL = PAGE
 NR = NON RADIAL
 P.B. = PLAT BOOK
 P.T. = POINT OF TANGENCY
 A.E. = ACCESS EASEMENT
 D.E. = DRAINAGE EASEMENT
 U.E. = UTILITY EASEMENT
 T.E. = TRAIL EASEMENT
 (8.000) = SQUARE FOOTAGE OF LOT
 ■ = PERMANENT REFERENCE MONUMENT FOUND 4" x 4" CONCRETE MONUMENT (LB 8071)
 ■ = PERMANENT REFERENCE MONUMENT SET 4" x 4" CONCRETE MONUMENT (LB 8071)
 ● = PERMANENT CONTROL POINT SET MAIL & POST NO. LB 8071



NOTE:
 THIS PLAT IS 8 SHEETS IN TOTAL, AND ONE IS NOT COMPLETED WITHOUT THE OTHERS. FOR DEDICATION, NOTES AND ACKNOWLEDGEMENTS SEE SHEET 1, FOR BOUNDARY DETAIL AND LEGAL DESCRIPTION SEE SHEET 2, FOR LOT DIMENSIONS SEE SHEET 3, 4, 5, 6, 7, AND 8.

PREPARED BY: JCH CONSULTING GROUP, INC., 426 SW 15TH STREET, OCALA, FL 34471