

LEGAL DESCRIPTION:

COMMENCE AT THE SOUTHWEST CORNER OF SECTION 9, TOWNSHIP 16 SOUTH, RANGE 22 EAST, MARION COUNTY, FLORIDA, SAID POINT ALSO BEING THE SOUTH EAST CORNER OF SECTION 8, TOWNSHIP 16 SOUTH, RANGE 22 EAST; THENCE N00°22'10"E. ALONG THE WEST BOUNDARY OF SAID SECTION 9 AND EAST BOUNDARY OF SAID SECTION 8, A DISTANCE OF 33.00 FEET TO THE NORTH RIGHT OF WAY LINE OF COUNTY ROAD C-328 (S.E. 80th STREET, 66.00 FEET WIDE RIGHT OF WAY) AND THE POINT OF BEGINNING; THENCE CONTINUE N00°22'10"E. ALONG THE SAID WEST BOUNDARY OF SECTION 9 AND EAST BOUNDARY OF SECTION 8, A DISTANCE OF 1301.94 FEET TO THE SOUTHWEST CORNER OF THE N1/2 OF THE S.W. 1/4 OF SAID SECTION 9; THENCE S89°44'15"E. ALONG THE SOUTH BOUNDARY OF SAID N1/2 OF THE S.W. 1/4 A DISTANCE OF 2656.10 FEET TO THE SOUTHEAST CORNER THEREOF; THENCE N00°13'26"E. ALONG THE EAST BOUNDARY OF SAID N1/2 OF THE S.W. 1/4 A DISTANCE OF 1336.53 FEET TO THE NORTHEAST CORNER THEREOF; THENCE N89°46'19"W. ALONG THE NORTH BOUNDARY OF SAID S.W. 1/4 A DISTANCE OF 450.78 FEET; THENCE N17°49'26"W. 521.10 FEET; THENCE S83°10'34"W. 81.48 FEET; THENCE N06°49'26"W. 210.09 FEET; THENCE N89°47'15"W. 662.18 FEET; THENCE S09°25'09"W. 157.84 FEET; THENCE S74°24'15"E. 31.89 FEET TO A POINT OF CURVATURE OF A CURVE CONCAVE SOUTHWESTERLY, HAVING A RADIUS OF 205.00 FEET AND A CENTRAL ANGLE OF 22°23'50"; THENCE SOUTHEASTERLY ALONG SAID CURVE AN ARC DISTANCE OF 80.14 FEET, WITH A CHORD BEARING AND DISTANCE OF S63°39'50"E. 79.63 FEET TO THE POINT OF TANGENCY OF SAID CURVE; THENCE N37°32'05"E. ON A RADIAL LINE TO SAID CURVE A DISTANCE OF 157.18 FEET; THENCE S89°47'15"E. 216.63 FEET; THENCE S23°09'32"E. 61.89 FEET; THENCE N40°14'52"W. 352.22 FEET; THENCE S49°45'08"W. 125.77 FEET; THENCE N67°44'14"W. 449.38 FEET; THENCE N32°02'23"W. 473.05 FEET; THENCE N00°05'55"W. 950.91 FEET; THENCE N38°59'55"W. 90.60 FEET; THENCE N76°46'55"W. 343.42 FEET; THENCE N72°57'02"W. 140.84 FEET; THENCE N87°53'16"W. 172.75 FEET; THENCE S73°24'55"W. 165.13 FEET; THENCE S30°04'09"W. 86.07 FEET; THENCE S08°48'12"W. 307.15 FEET; THENCE S21°52'27"W. 236.51 FEET; THENCE N12°22'10"E. 227.05 FEET; THENCE N73°07'29"W. 251.84 FEET; THENCE N46°25'29"W. 146.70 FEET; THENCE N10°56'35"E. 604.20 FEET; THENCE N56°31'17"W. 281.31 FEET; THENCE N74°33'46"W. 800.20 FEET; THENCE S58°08'46"W. 632.14 FEET; THENCE S03°20'58"W. 106.82 FEET; THENCE S79°52'17"E. 125.72 FEET; THENCE N69°49'34"E. 197.85 FEET; THENCE S88°56'20"E. 761.41 FEET; THENCE S02°23'03"W. 599.98 FEET; THENCE S21°28'27"W. 797.52 FEET; THENCE S89°43'21"W. 173.50 FEET; THENCE N02°54'10"W. 509.05 FEET; THENCE N12°22'10"E. 227.05 FEET; THENCE S70°18'12"E. 246.34 FEET; THENCE N19°41'48"E. 141.07 FEET TO A POINT OF CURVATURE OF A CURVE CONCAVE NORTHWESTERLY, HAVING A RADIUS OF 155.00 FEET AND A CENTRAL ANGLE OF 6°52'25"; THENCE NORTHEASTERLY ALONG SAID CURVE AN ARC DISTANCE OF 18.55 FEET, WITH A CHORD BEARING AND DISTANCE OF N16°16'05"E. 18.54 FEET TO THE POINT OF TANGENCY OF SAID CURVE; THENCE N17°09'37"W. ALONG THE RADIAL OF SAID CURVE 187.16 FEET; THENCE N20°46'46"W. 339.74 FEET; THENCE S02°24'17"W. 57.16 FEET TO A POINT OF CURVATURE OF A CURVE CONCAVE SOUTHEASTERLY, HAVING A RADIUS OF 155.00 FEET AND A CENTRAL ANGLE OF 16°55'02"; THENCE SOUTHWESTERLY ALONG SAID CURVE AN ARC DISTANCE OF 45.77 FEET, WITH A CHORD BEARING AND DISTANCE OF S73°56'46"W. 45.60 FEET TO THE POINT OF TANGENCY OF SAID CURVE; THENCE S65°29'15"W. 231.57 FEET; THENCE S24°30'44"E. 134.10 FEET; THENCE S36°57'46"W. 187.99 FEET; THENCE S14°05'10"W. 866.03 FEET; THENCE S88°42'04"E. 79.95 FEET; THENCE N27°14'31"E. 375.39 FEET; THENCE S65°15'25"E. 219.74 FEET; THENCE S08°45'42"E. 372.65 FEET; THENCE S14°38'54"E. 557.74 FEET; THENCE S25°35'04"W. 231.88 FEET; THENCE S88°07'55"W. 300.00 FEET; THENCE S08°15'13"E. 339.06 FEET; THENCE S89°34'35"E. 206.96 FEET; THENCE S55°48'24"E. 256.97 FEET; THENCE S88°57'57"E. 209.56 FEET; THENCE S40°17'20"E. 707.70 FEET; THENCE S24°55'56"E. 414.46 FEET; THENCE S53°29'17"W. 211.76 FEET; THENCE S38°00'43"E. 67.35 FEET TO A POINT OF CURVATURE OF A CURVE CONCAVE NORTHWESTERLY, HAVING A RADIUS OF 155.00 FEET AND A CENTRAL ANGLE OF 32°14'40"; THENCE SOUTHEASTERLY ALONG SAID CURVE AN ARC DISTANCE OF 87.23 FEET, WITH A CHORD BEARING AND DISTANCE OF S52°35'03"E. 86.08 FEET TO THE POINT OF TANGENCY OF SAID CURVE; THENCE S21°14'37"W. ON A RADIAL LINE TO SAID CURVE A DISTANCE OF 50.00 FEET; THENCE S53°29'17"W. 225.24 FEET; THENCE N42°38'53"E. 462.59 FEET; THENCE N14°20'44"W. 509.57 FEET; THENCE N53°29'17"E. 100.40 FEET; THENCE N28°34'54"W. 90.14 FEET TO A POINT OF CURVATURE OF A CURVE CONCAVE SOUTHWESTERLY, HAVING A RADIUS OF 155.00 FEET AND A CENTRAL ANGLE OF 60°59'51"; THENCE NORTHWESTERLY ALONG SAID CURVE AN ARC DISTANCE OF 165.01 FEET, WITH A CHORD BEARING AND DISTANCE OF N50°04'47"W. 157.33 FEET TO THE POINT OF TANGENCY OF SAID CURVE; THENCE N89°34'45"W. 40.50 FEET TO THE NORTHWEST CORNER OF THE S.E. 1/4 OF THE S.W. 1/4 OF AFORESAID SECTION 9; THENCE S08°15'13"E. 339.06 FEET TO THE SOUTHWEST CORNER OF SAID S.E. 1/4 OF THE S.W. 1/4 A DISTANCE OF 1304.53 FEET TO THE NORTH RIGHT OF WAY LINE OF AFORESAID COUNTY ROAD C-328; THENCE S89°44'24"E. ALONG SAID NORTH RIGHT OF WAY LINE 1328.95 FEET TO THE POINT OF BEGINNING, CONTAINING 253.55 ACRES, MORE OR LESS.

AND TOGETHER WITH (TRACT "C")

COMMENCE AT THE SOUTHWEST CORNER OF SECTION 9, TOWNSHIP 16 SOUTH, RANGE 22 EAST, MARION COUNTY, FLORIDA, SAID POINT ALSO BEING THE SOUTH EAST CORNER OF SECTION 8, TOWNSHIP 16 SOUTH, RANGE 22 EAST; THENCE N00°22'10"E. ALONG THE WEST BOUNDARY OF SAID SECTION 9 AND EAST BOUNDARY OF SAID SECTION 8, A DISTANCE OF 33.00 FEET TO THE NORTH RIGHT OF WAY LINE OF COUNTY ROAD C-328 (S.E. 80th STREET, 66.00 FEET WIDE RIGHT OF WAY); THENCE N89°44'24"W. ALONG SAID NORTH RIGHT OF WAY LINE 1328.95 FEET TO A POINT ON THE WEST BOUNDARY OF THE S.E. 1/4 OF THE S.W. 1/4 OF AFORESAID SECTION 9; THENCE N00°14'55"E. ALONG SAID WEST BOUNDARY 1304.53 FEET; THENCE N89°34'45"W. ALONG THE SOUTH BOUNDARY OF THE S.W. 1/4 OF SAID SECTION 8 A DISTANCE OF 665.86 FEET; THENCE N00°11'18"E. ALONG THE WEST BOUNDARY OF THE S.E. 1/4 OF SAID SECTION 8 A DISTANCE OF 1338.82 FEET; THENCE N89°28'04"W. ALONG THE SOUTH BOUNDARY OF THE N.E. 1/4 OF SAID SECTION 9 A DISTANCE OF 667.27 FEET TO THE SOUTHWEST CORNER THEREOF; THENCE N00°06'42"E. ALONG THE WEST BOUNDARY OF SAID N.E. 1/4 A DISTANCE OF 462.55 FEET TO THE POINT OF BEGINNING; THENCE CONTINUE N00°06'42"E. ALONG SAID WEST BOUNDARY 288.67 FEET; THENCE S55°58'30"E. 131.91 FEET; THENCE S13°27'45"E. 240.00 FEET; THENCE S02°05'10"W. 210.83 FEET TO A POINT OF CURVATURE OF A CURVE CONCAVE SOUTHEASTERLY, HAVING A RADIUS OF 205.00 FEET AND A CENTRAL ANGLE OF 22°09'19"; THENCE SOUTHWESTERLY ALONG SAID CURVE AN ARC DISTANCE OF 72.11 FEET, WITH A CHORD BEARING AND DISTANCE OF S10°49'14"W. 71.74 FEET TO THE POINT OF TANGENCY OF SAID CURVE; THENCE S00°44'34"W. 214.61 FEET; THENCE N89°15'26"W. 260.82 FEET TO THE NORTH CORNER OF SECTION 9, TOWNSHIP 16 SOUTH, RANGE 22 EAST, MARION COUNTY, FLORIDA, CONTAINING 6.42 ACRES, MORE OR LESS.

AND TOGETHER WITH (TRACT "F")

COMMENCE AT THE SOUTHWEST CORNER OF SECTION 9, TOWNSHIP 16 SOUTH, RANGE 22 EAST, MARION COUNTY, FLORIDA, SAID POINT ALSO BEING THE SOUTH EAST CORNER OF SECTION 8, TOWNSHIP 16 SOUTH, RANGE 22 EAST; THENCE N00°22'10"E. ALONG THE WEST BOUNDARY OF SAID SECTION 9 AND EAST BOUNDARY OF SAID SECTION 8, A DISTANCE OF 33.00 FEET TO THE NORTH RIGHT OF WAY LINE OF COUNTY ROAD C-328 (S.E. 80th STREET, 66.00 FEET WIDE RIGHT OF WAY); THENCE N89°44'24"W. ALONG SAID NORTH RIGHT OF WAY LINE 1328.95 FEET TO A POINT ON THE WEST BOUNDARY OF THE S.E. 1/4 OF THE S.W. 1/4 OF AFORESAID SECTION 9; THENCE N00°14'55"E. ALONG SAID WEST BOUNDARY 1304.53 FEET; THENCE N89°34'45"W. ALONG THE SOUTH BOUNDARY OF THE S.W. 1/4 OF SAID SECTION 8 A DISTANCE OF 665.86 FEET; THENCE N00°11'18"E. ALONG THE WEST BOUNDARY OF THE S.E. 1/4 OF SAID SECTION 8 A DISTANCE OF 1338.82 FEET TO THE POINT OF BEGINNING; THENCE CONTINUE N00°11'18"E. ALONG SAID WEST BOUNDARY 288.67 FEET; THENCE S55°58'30"E. 131.91 FEET; THENCE S13°27'45"E. 240.00 FEET; THENCE S02°05'10"W. 210.83 FEET TO A POINT OF CURVATURE OF A CURVE CONCAVE SOUTHEASTERLY, HAVING A RADIUS OF 205.00 FEET AND A CENTRAL ANGLE OF 22°09'19"; THENCE SOUTHWESTERLY ALONG SAID CURVE AN ARC DISTANCE OF 72.11 FEET, WITH A CHORD BEARING AND DISTANCE OF S10°49'14"W. 71.74 FEET TO THE POINT OF TANGENCY OF SAID CURVE; THENCE S00°44'34"W. 214.61 FEET; THENCE N89°15'26"W. 260.82 FEET TO THE NORTH CORNER OF SECTION 9, TOWNSHIP 16 SOUTH, RANGE 22 EAST, MARION COUNTY, FLORIDA, CONTAINING 2.95 ACRES, MORE OR LESS.

FOR A TOTAL OF 262.92 ACRES, MORE OR LESS.

ASSESSMENT NOTIFICATION

THE BOARD OF COUNTY COMMISSIONERS OF MARION COUNTY, FLORIDA, AS A CONDITION PRECEDENT TO THE ACCEPTANCE OF THIS PLAT FOR RECORD, DOES HEREBY NOTIFY ALL PRESENT AND FUTURE OWNERS OF PROPERTY SHOWN ON THIS PLAT THAT THE LANDS INCLUDED IN THIS PLAT ARE SUBJECT TO THE SPECIAL ASSESSMENTS AS MAY BE PERMITTED BY LAW TO FINANCE COSTS INCURRED IN CONNECTION WITH THE MAINTENANCE, OPERATION AND CONSTRUCTION OF A CENTRAL WATER SYSTEM AND SEWER SYSTEM AND/OR TRAFFIC SAFETY IMPROVEMENTS, INCLUDING, BUT NOT LIMITED TO, TURN LANES, BY-PASS LANES AND TRAFFIC SIGNALS WHEN IN THE OPINION OF SAID BOARD OR OTHER GOVERNING BODY HAVING JURISDICTION, SUCH FACILITIES ARE NECESSARY IN ORDER TO PROTECT THE ENVIRONMENT AND THE HEALTH, SAFETY AND WELFARE OF THE GENERAL PUBLIC.

NORM PURDY, CHAIRMAN
BOARD OF COUNTY COMMISSIONERS

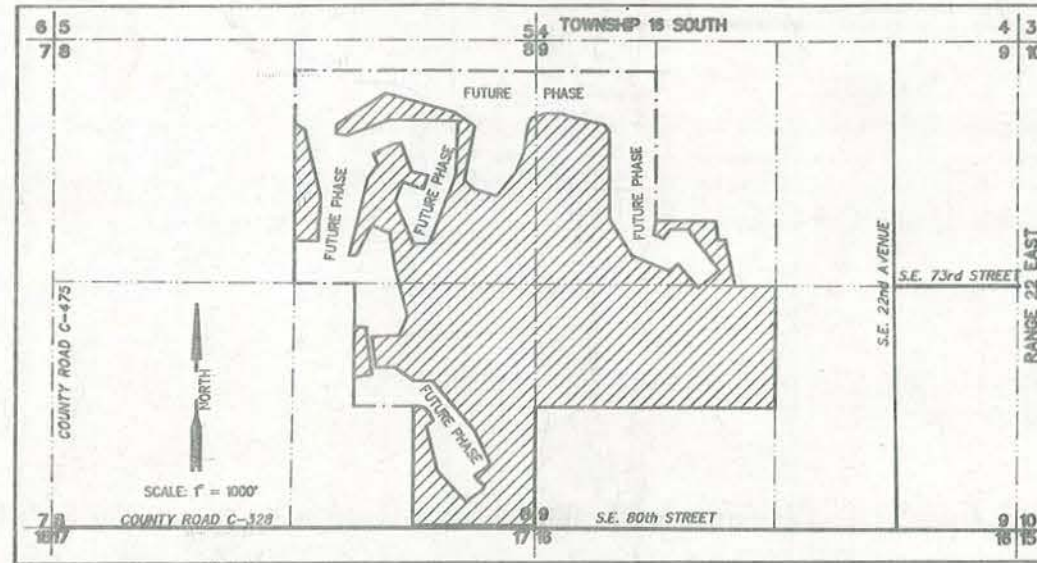
SURVEYOR'S CERTIFICATE

I HEREBY CERTIFY THAT THIS PLAT OF THE COUNTRY CLUB OF OCALA UNIT I IS A TRUE AND CORRECT REPRESENTATION OF THE LAND AS RECENTLY SURVEYED AND PLATTED UNDER MY DIRECTION, THAT THE PERMANENT REFERENCE MONUMENTS AS SHOWN HEREON WERE IN PLACE ON THE 25th DAY OF JULY, 1993, AND THAT THIS PLAT COMPLIES WITH THE REQUIREMENTS OF CHAPTER 177, FLORIDA STATUTES, AND RULE 21 H-06, FLORIDA ADMINISTRATIVE CODE.

BY: *Norm Purdy*
NORM PURDY, CHAIRMAN
REGISTERED SURVEYOR NO. 198
STATE OF FLORIDA

THE COUNTRY CLUB OF OCALA UNIT I

IN SECTIONS 8 & 9, TOWNSHIP 16 SOUTH, RANGE 22 EAST
MARION COUNTY, FLORIDA



LOCATION MAP

STANDARD NOTES:

- UTILITY, DRAINAGE AND ACCESS EASEMENTS ARE SHOWN BY DASHED LINES ON THE ATTACHED PLAT AND ARE 10 FEET WIDE UNLESS OTHERWISE NOTED. ALL PUBLIC UTILITY COMPANIES AND GOVERNMENTAL AGENCIES ARE GRANTED THE RIGHT TO INSTALL AND MAINTAIN UTILITIES AND DRAINAGE FACILITIES IN THE EASEMENTS.
- NO LOT OR TRACT AS SHOWN ON THIS PLAT SHALL BE DIVIDED OR RE-DIVIDED EXCEPT FOR THE SOLE PURPOSE OF PROVIDING ADDITIONAL AREA TO ADJACENT LOTS OR TRACTS OR UNITS. A REPLAT, IF FILED WITH MARION COUNTY WHICH REPLAT COMPLIES WITH THE PROVISIONS OF THE COUNTY LAND DEVELOPMENT CODE. VIOLATION OF THIS PROVISION MAY BE PUNISHABLE AS PROVIDED IN THE CODE OF MARION COUNTY.
- APPLICATIONS FOR SEPTIC TANKS SYSTEMS SHALL BE CONSIDERED ON A LOT BY LOT BASIS EACH DEPENDENT ON ITS OWN MERITS. INSTALLATION SHALL BE SUBJECT TO REGULATIONS IN EFFECT AT THE TIME OF INSTALLATION.
- COUNTY OFFICIALS EMPLOYED BY THE COUNTY BUILDING, ZONING, RIGHT-OF-WAY, PLANNING, ENGINEERING, AND ENVIRONMENTAL HEALTH DEPARTMENTS, AND THE COUNTY SURVEYOR, SHALL HAVE THE RIGHT TO ENTER UPON THE LANDS INCLUDED IN THIS PLAT FOR THE PURPOSES OF INSPECTING ANY AND ALL FACILITIES, STRUCTURES, AND CONSTRUCTION OF IMPROVEMENTS IN ORDER TO ASSURE THAT THE SAME ARE IN KEEPING WITH THE PUBLIC SAFETY, HEALTH AND WELFARE OF THE GENERAL PUBLIC.
- EACH PURCHASER OF LOTS OR TRACTS WITHIN THIS SUBDIVISION IS ADVISED OF THE FOLLOWING: UNLESS IMPROVEMENTS (INCLUDING BUT NOT LIMITED TO ROADS) ARE IN EXISTENCE AT THE TIME THIS PLAT WAS RECORDED IN THE PUBLIC RECORDS, OR 2. ASSURED BY WRITTEN AGREEMENT BETWEEN THE DEVELOPER AND MARION COUNTY BOARD OF COUNTY COMMISSIONERS, THEN SAID IMPROVEMENTS ARE NOT IN ANY MANNER ASSURED FOR CONSTRUCTION IN THE FUTURE BY EITHER MARION COUNTY OR SELLER OF SAID LOTS OR TRACTS.
- REMARKS ARE BASED ON AN ASSUMED MERIDIAN WITH THE SOUTH BOUNDARY OF SECTION 8, TOWNSHIP 16 SOUTH, RANGE 22 EAST BEARING N89°44'24"W.
- NO IMPROVEMENTS ARE LOCATED ON THIS PLAT.
- THIS PLAT CONTAINS 88 LOTS AND 1.02 MILES OF ROADWAY.
- ALL RAIN ARE 25 FEET UNLESS OTHERWISE SHOWN.
- THE PRIVATE DRAINAGE EASEMENTS AS SHOWN HEREON SHALL NOT BE ALTERED IN ANY WAY FROM THE APPROVED IMPROVEMENT PLANS DATED 10-09-82 & 12-08-82, RESPECTIVELY FOR UNIT I (AND ON FILE IN THE MARION COUNTY ENGINEERING DEPARTMENT) WITHOUT THE PRIOR WRITTEN APPROVAL OF THE MARION COUNTY BOARD OF COUNTY COMMISSIONERS. SAID PRIVATE DRAINAGE EASEMENTS SHALL BE USED FOR THE COLLECTION AND DISPOSAL OF STORMWATER RUN-OFF FROM THE ROADS AND LOTS IN THIS SUBDIVISION AND SHALL NOT BE USED FOR ANY USE INCONSISTANT THEREWITH. MARION COUNTY HAS NO OBLIGATION FOR THE MAINTENANCE OF THESE SAID PRIVATE DRAINAGE EASEMENTS.
- SPECIAL NOTE: THESE LOTS MAY REQUIRE ADVANCE ON-SITE SEWAGE TREATMENT DISPOSAL SYSTEMS IF SOIL CONDITIONS WARRANT.

NOTICE: THERE MAY BE ADDITIONAL RESTRICTIONS THAT ARE NOT RECORDED ON THIS PLAT THAT MAY BE FOUND IN THE PUBLIC RECORDS OF THIS COUNTY.

LEGEND:

- | | |
|---|---------------------------|
| □ INDICATES PERMANENT REFERENCE MONUMENT (P.R.M.) | C/ INDICATES CURVE NUMBER |
| ○ INDICATES PERMANENT CONTROL POINT (P.C.P.) | L# INDICATES LINE NUMBER |
| SEC. INDICATES SECTION - (TOWNSHIP) - (RANGE) | BDY INDICATES BOUNDARY |
| P.O.B. INDICATES POINT OF BEGINNING | COR INDICATES CORNER |
| P.O.C. INDICATES POINT OF COMMENCEMENT | FD. INDICATES FOUND |
| P.C. INDICATES POINT OF CURVATURE | EL INDICATES CENTERLINE |
| P.T. INDICATES POINT OF TANGENCY | N INDICATES NORTH |
| D.E. INDICATES DRAINAGE EASEMENT | S INDICATES SOUTH |
| U.E. INDICATES UTILITY EASEMENT | E INDICATES EAST |
| G.C.E. INDICATES GOLF COURSE EASEMENT | W INDICATES WEST |
| L.S.E. INDICATES LIFT STATION EASEMENT | |
| B.S.L. INDICATES BUILDING SETBACK LINE | |
| F.P. INDICATES 100 YEAR FLOOD PLAIN | |
| EL. INDICATES ELEVATION | |
| (MR) INDICATES NON-RADIAL | |
| (R) INDICATES RADIAL | |

DEVELOPER'S ACKNOWLEDGEMENT AND DEDICATION:

KNOW ALL MEN BY THESE PRESENTS, THAT THE COUNTRY CLUB OF OCALA, INC., A FLORIDA CORPORATION, AND COUNTRY CLUB OF OCALA, A FLORIDA LIMITED PARTNERSHIP HAS CAUSED TO BE MADE THE ATTACHED PLAT OF "THE COUNTRY CLUB OF OCALA, UNIT I" A SUBDIVISION OF THE LAND HEREON DESCRIBED, THAT S.E. 14TH CIRCLE, S.E. 14TH COURT AND S.E. 73RD PLACE, DESIGNATED HEREON SHALL BE PRIVATE PROPERTY AND WHICH ARE HEREBY DEDICATED TO THE USE OF THE OWNERS ASSOCIATION ESTABLISHED FOR THIS SUBDIVISION, SUBJECT HOWEVER TO A PERPETUAL RIGHT OF EASEMENT, HEREIN GRANTED, FOR THE PURPOSE OF INGRESS, EGRESS AND UTILITIES BY SANITATION, POSTAL, FIRE, LAW ENFORCEMENT, UTILITIES (MUNICIPAL AND PRIVATE) AND EMERGENCY MEDICAL SERVICE VEHICLES AND THEIR PERSONNEL PROVIDING SERVICES TO THE SUBDIVISION; AND THAT THE PRIVATE DRAINAGE EASEMENTS DESIGNATED HEREON SHALL BE PRIVATE PROPERTY AND WHICH ARE HEREBY DEDICATED TO THE PROPERTY OWNER'S ASSOCIATION ESTABLISHED FOR THIS SUBDIVISION, PROVIDED HOWEVER, THAT THE SAME SHALL BE USED FOR THE COLLECTION AND DISPOSAL OF STORM WATER DRAINAGE AND FOR NO USE INCONSISTANT THEREWITH; AND SAID PRIVATE DRAINAGE EASEMENTS ARE SUBJECT TO A PERPETUAL RIGHT OF EASEMENT GRANTED HEREBY UNTO MARION COUNTY, A POLITICAL SUBDIVISION OF THE STATE OF FLORIDA, FOR THE PURPOSE OF COLLECTION AND DISPOSAL OF STORM WATER RUNOFF FROM THE PRIVATE ROADS SHOWN ON THIS PLAT IN ACCORDANCE WITH THE DRAINAGE PLAN ON FILE IN THE MARION COUNTY ENGINEERING DEPARTMENT, AND THAT THE SEWER/WATER EASEMENTS AND UTILITY EASEMENTS AS SHOWN OR NOTED ARE RESERVED AND GRANTED EXCLUSIVELY FOR SUCH USES BY THE UTILITIES (MUNICIPAL AND PRIVATE) TO WHOM RIGHTS IN SUCH EASEMENTS SHALL BE GRANTED FROM TIME TO TIME BY THE DEDICATOR OR HEIRS IN INTEREST; THAT NEITHER THE FOREGOING INSTRUMENT AND WRITTEN AGREEMENTS HEREIN MADE NOR THE EASEMENTS SHALL CONSTITUTE A DEDICATION TO THE GENERAL PUBLIC OR MARION COUNTY AND THAT NO OBLIGATION IS IMPOSED UPON THE COUNTY OR ANY OTHER PUBLIC BODY FOR THE IMPROVEMENT OR MAINTENANCE OF THE STORM WATER DRAINAGE FACILITIES OR EASEMENTS.

IN WITNESS WHEREOF THE SAID THE COUNTRY CLUB OF OCALA, INC. HAS CAUSED THESE PRESENTS TO BE SIGNED IN ITS CORPORATE NAME BY ITS PRESIDENT AND SECRETARY, AND ITS CORPORATE SEAL TO BE HEREUNTO AFFIXED BY ITS SECRETARY ON THIS 12th DAY OF JULY, 1993, ALL BY AND WITH THE AUTHORITY OF THE BOARD OF DIRECTORS OF SAID CORPORATION.

BY: *Albert B. Peek* PRESIDENT
BY: *Fred C. Wollett* SECRETARY (SEAL)
THE COUNTRY CLUB OF OCALA, INC.
STATE OF FLORIDA COUNTY OF MARION

BEFORE ME THIS DAY PERSONALLY APPEARED B. DUKE WEST AND FREDRIC C. WOLLETT AS PRESIDENT AND SECRETARY RESPECTIVELY OF THE COUNTRY CLUB OF OCALA, INC. TO ME WELL KNOWN TO BE THE PERSONS DESCRIBED IN AND WHO EXECUTED THE FOREGOING INSTRUMENT AND WRITTEN AGREEMENTS HEREIN MADE SAID CORPORATION ALL BY AND WITH THE BOARD OF DIRECTORS OF SAID CORPORATION.

MY COMMISSION EXPIRES 6-14-95 (SIGNED) NOTARY PUBLIC
DATE 7-1-93 DATE OF FLORIDA AT LARGE
#CC19949 (SEAL)

AND:

IN WITNESS WHEREOF THE SAID COUNTRY CLUB OF OCALA, LTD., A FLORIDA LIMITED PARTNERSHIP, BY CCOO, INC., A FLORIDA CORPORATION, ITS SOLE GENERAL PARTNER HAS CAUSED THESE PRESENTS TO BE SIGNED IN ITS CORPORATE NAME BY ITS PRESIDENT AND VICE PRESIDENT, AND ITS CORPORATE SEAL TO BE HEREUNTO AFFIXED BY ITS VICE-PRESIDENT ON THIS 12th DAY OF JULY, 1993, ALL BY AND WITH THE AUTHORITY OF THE BOARD OF DIRECTORS OF SAID CORPORATION.

BY: *Albert B. Peek* PRESIDENT
BY: *John S. Rudniansky* VICE-PRESIDENT
CCOO, INC.
STATE OF FLORIDA COUNTY OF MARION

BEFORE ME THIS DAY PERSONALLY APPEARED ALBERT B. PEEK AND JOHN S. RUDNIANSKY, AS PRESIDENT AND VICE-PRESIDENT RESPECTIVELY OF CCOO, INC. TO ME WELL KNOWN TO BE THE PERSONS DESCRIBED IN AND WHO EXECUTED THE FOREGOING INSTRUMENT AND WHO ACKNOWLEDGED THAT THEY DID SO AS OFFICERS OF SAID CORPORATION ALL BY AND WITH THE BOARD OF DIRECTORS OF SAID CORPORATION, FOR THE USES AND PURPOSES THEREIN EXPRESSED.

MY COMMISSION EXPIRES 6-14-95 (SIGNED) NOTARY PUBLIC, VERNIA GOODEN
DATE 9-28-93 DATE OF FLORIDA AT LARGE
#CC19949 (SEAL)

CONSENT OF MORTGAGEE

KNOW ALL MEN BY THESE PRESENTS: THAT BARNETT BANK OF MARION COUNTY, N.A. A NATIONAL ASSOCIATION EXISTING UNDER THE LAWS OF THE UNITED STATES OF AMERICA, THE OWNER AND HOLDER OF THAT CERTAIN MORTGAGE DEED FROM CATHRYN POWERS AND HER HUSBAND, MARK E. POWERS, DATED APRIL 6, 1993 AND RECORDED IN OFFICIAL RECORDS BOOK 1915, AT PAGE 0699, AS MODIFIED BY PARTIAL MORTGAGE ASSUMPTION AGREEMENT BETWEEN COUNTRY CLUB OF OCALA, LTD., CATHRYN POWERS, MARK E. POWERS, AND BARNETT BANK OF MARION COUNTY, N.A. DATED MAY 6, 1993 AND RECORDED IN OFFICIAL RECORDS BOOK 1923, PAGE 1442, ALL OF THE PUBLIC RECORDS OF MARION COUNTY, FLORIDA, ENCUMBERING THE PROPERTY DESCRIBED HEREON, DOES HEREBY CONSENT TO THIS PLAT AND JOINS IN THE ABOVE DEDICATION.

IN WITNESS WHEREOF SAID BARNETT BANK OF MARION COUNTY, N.A. HAS CAUSED THESE PRESENTS TO BE SIGNED IN ITS NAME BY ITS VICE PRESIDENT AND ASSISTANT CASHIER ON THIS 12th DAY OF JULY, 1993, ALL BY AND WITH THE AUTHORITY OF THE BOARD OF DIRECTORS OF SAID NATIONAL ASSOCIATION.

BARNETT BANK OF MARION COUNTY, N.A.

BY: *Rusty Branson* RUSTY BRANSON, VICE PRESIDENT
BY: *Polly A. Davis* POLLY A. DAVIS, ASSISTANT CASHIER (SEAL)
STATE OF FLORIDA COUNTY OF MARION

BEFORE ME THIS DAY PERSONALLY APPEARED RUSTY BRANSON AND POLLY A. DAVIS AS VICE PRESIDENT AND ASSISTANT CASHIER, RESPECTIVELY OF BARNETT BANK OF MARION COUNTY, N.A., TO ME WELL KNOWN TO BE THE PERSONS WHO ACKNOWLEDGED THAT THEY DID SO AS OFFICERS OF SAID NATIONAL ASSOCIATION, ALL BY AND WITH THE AUTHORITY OF THE BOARD OF DIRECTORS OF SAID NATIONAL ASSOCIATION.

DATE: 6-12-93 (SIGNED) *Sharon A. Warren*
MY COMMISSION EXPIRES: 4-22-94 NOTARY PUBLIC STATE OF FLORIDA AT LARGE (SEAL)

APPROVAL OF OFFICIALS

APPROVED: *James L. Lantry* COUNTY ADMINISTRATION DEPARTMENT
BY: *John S. Rudniansky* COUNTY DEVELOPMENT COORDINATOR
BY: *John S. Rudniansky* COUNTY ENGINEERING DEPARTMENT
BY: *John S. Rudniansky* COUNTY SURVEYOR
BY: *John S. Rudniansky* COUNTY ENVIRONMENTAL HEALTH DEPARTMENT
BY: *John S. Rudniansky* COUNTY RIGHT-OF-WAY DEPARTMENT
BY: *John S. Rudniansky* COUNTY PLANNING DEPARTMENT
BY: *John S. Rudniansky* COUNTY BUILDING DEPARTMENT
BY: *John S. Rudniansky* COUNTY ZONING DEPARTMENT
THE BOARD OF COUNTY COMMISSIONERS OF MARION COUNTY, FLORIDA DOES HEREBY APPROVE THIS PLAT FOR RECORDING IN THE PUBLIC RECORDS.

BY: *Norm Purdy* NORM PURDY, CHAIRMAN OF THE BOARD
ATTEST: *Frances E. Threlk* FRANCES E. THRELK, CLERK OF THE CIRCUIT COURT

I HEREBY CERTIFY THAT THE ATTACHED PLAT CONFORMS WITH THE PROVISIONS OF CHAPTER 177, FLORIDA STATUTES, AND THAT SAID PLAT WAS FILED FOR RECORD IN PLAT BOOK 2, PAGES 176-178 OF THE PUBLIC RECORDS OF MARION COUNTY, FLORIDA, AT 11:40AM ON 1993 - JAN 19,

BY: *Frances E. Threlk*
FRANCES E. THRELK, CLERK OF THE CIRCUIT COURT

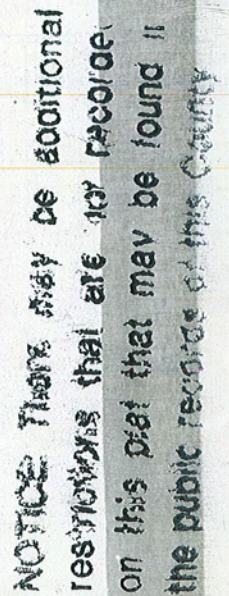
NOTICE: There may be additional restrictions that are for record on this plat that may be found in the public records of this County

#2-17



NOTICE There may be additional restrictions that are not recorded on this plat that may be found in the public records of this County.

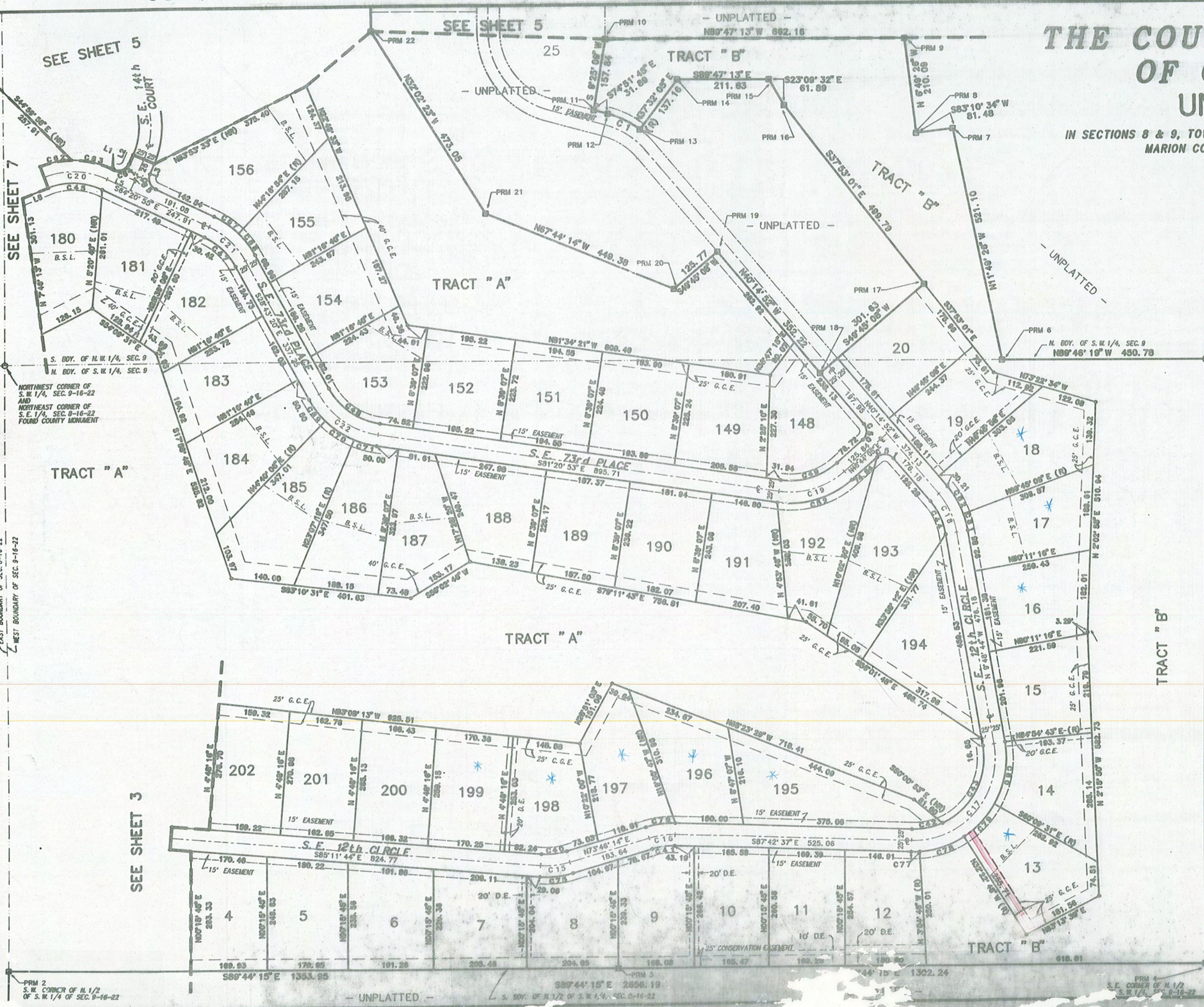
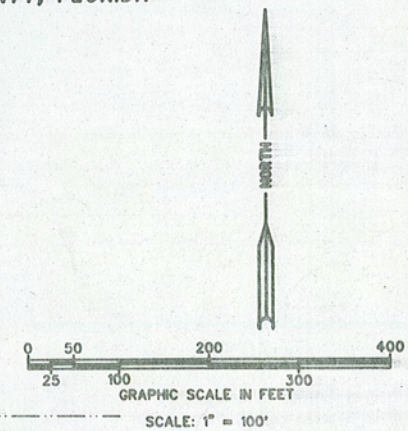
#2-172



2-173

THE COUNTRY CLUB OF OCALA UNIT I

IN SECTIONS 8 & 9, TOWNSHIP 16 SOUTH, RANGE 22 EAST
MARION COUNTY, FLORIDA



Lots 13, 16-18 & Lots 195-199
* HEID FOR IMPROV
O.R. 2082 PG. 0757
8-29-94

Reconveyed
See
2149/1116

(GCE)
* PORTION OF 25' ESMT
W/ LINE LOT 13
VACATED BY RESO
05-R-6 O.R. 3918
PG. 656 1-4-05

LINE TABLE:

NO.	DIRECTION	LENGTH
1	S64°20'55"E	5.33
2	N23°57'36"E	21.78
3	N23°57'36"E	24.71
4	N23°57'36"E	73.26
5	S64°20'55"E	58.83
6	N89°36'49"E	61.62

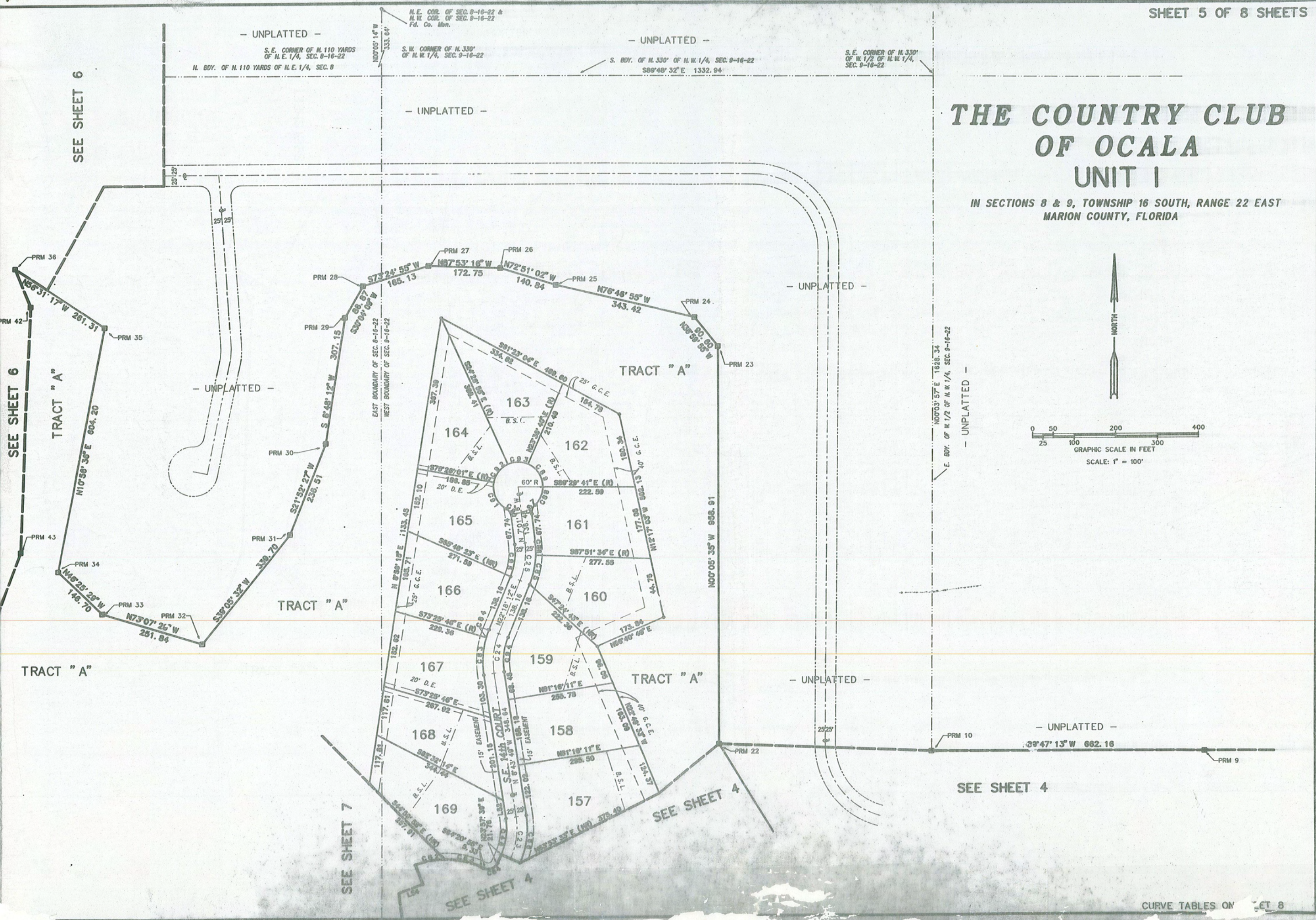
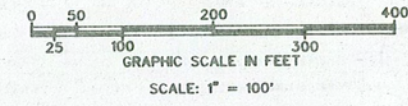
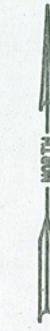
NOTICE: There may be additional
reservations that are for record
on this plat that may be found in
the public records of this County.

#2-174

CURVE TABLES
ON SHEET 8

THE COUNTRY CLUB OF OCALA UNIT I

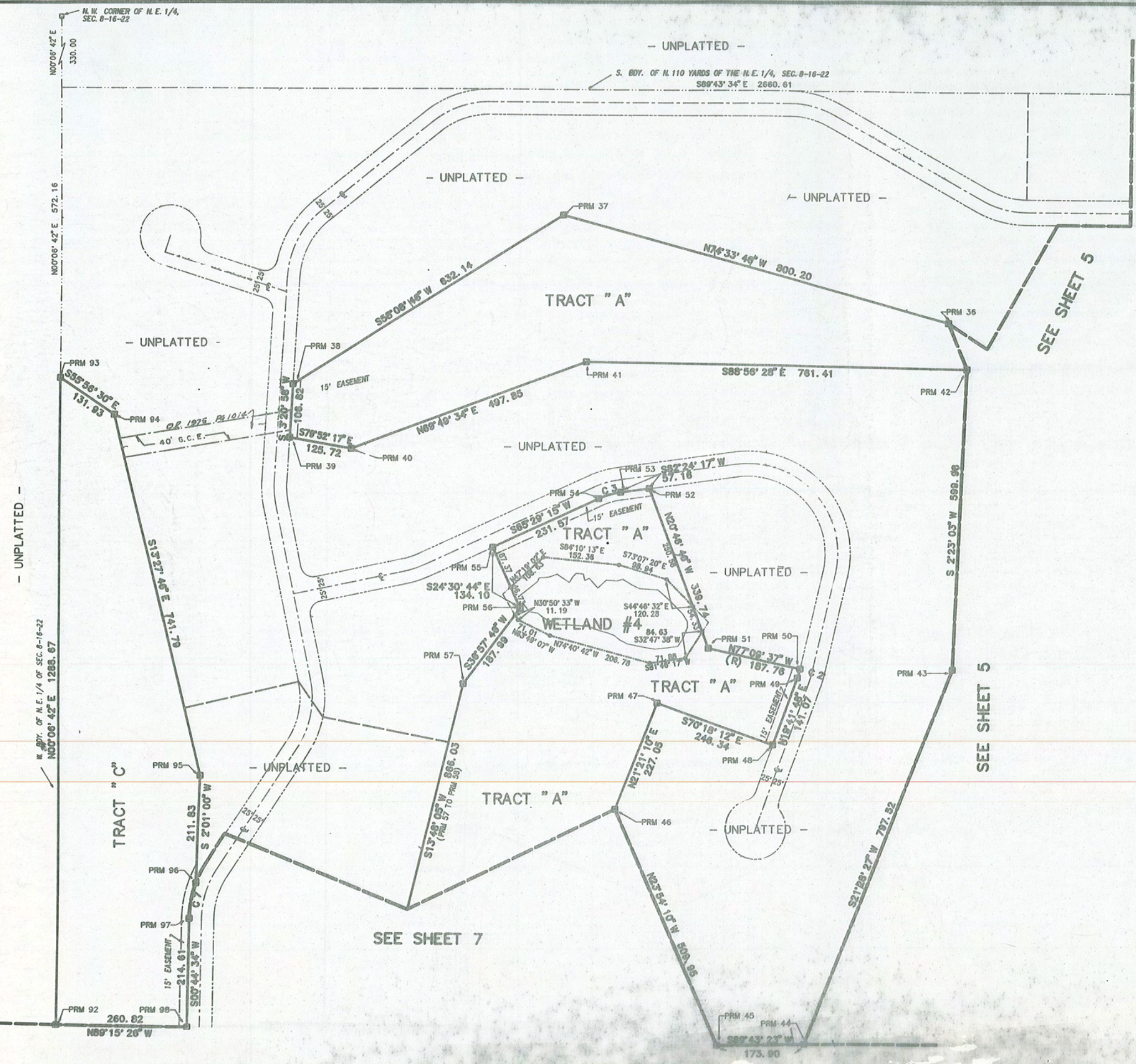
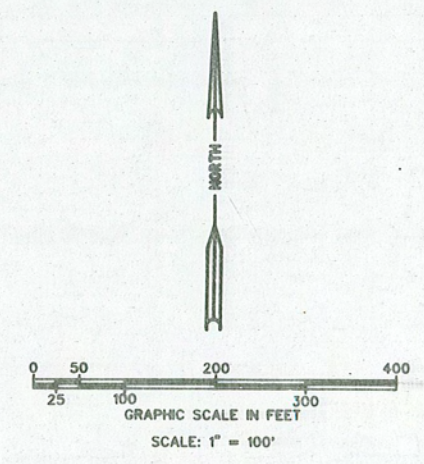
IN SECTIONS 8 & 9, TOWNSHIP 16 SOUTH, RANGE 22 EAST
MARION COUNTY, FLORIDA



NOTICE: There may be additional
reservations that are not recorded
on this plat that may be found in
the public records of this County

THE COUNTRY CLUB OF OCALA UNIT I

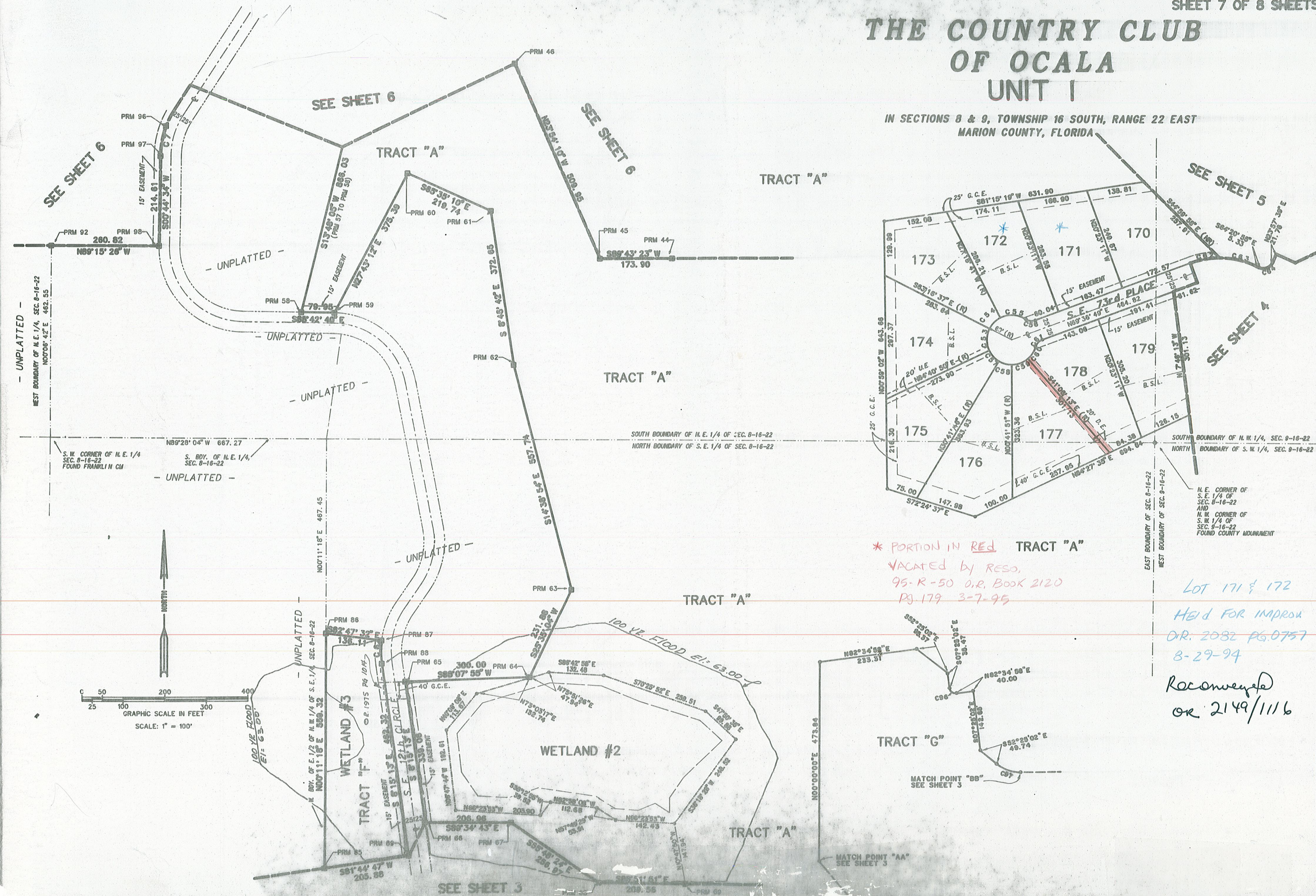
IN SECTIONS 8 & 9, TOWNSHIP 16 SOUTH, RANGE 22 EAST
MARION COUNTY, FLORIDA



NOTICE: There may be additional
reservations that are not recorded
on this plat that may be found in
the public records of this County.

THE COUNTRY CLUB OF OCALA UNIT I

IN SECTIONS 8 & 9, TOWNSHIP 16 SOUTH, RANGE 22 EAST
MARION COUNTY, FLORIDA



* PORTION IN RED TRACT "A"
VACATED by RESO.
95-R-50 O.R. BOOK 2120
PG. 179 3-7-95

Lot 171 & 172
HELD FOR IMPROV
O.R. 2082 PG. 0757
8-29-94

Reconveyed
or 2149/1116

NOTICE: There may be additional
resolutions that are not recorded
on this plat that may be found in
the public records of this County.

THE COUNTRY CLUB OF OCALA UNIT I

IN SECTIONS 8 & 9, TOWNSHIP 16 SOUTH, RANGE 22 EAST
MARION COUNTY, FLORIDA

STATE PLANE COORDINATES BASED ON THE NORTH AMERICAN
DATUM OF 1983, FLORIDA HIGH PRECISION GEODETIC NETWORK,
1990 ADJUSTMENT.

P.R.M. STATE PLANE COORDINATES

P.R.M. #	NORTHING	EASTING
1	1735009.243 N	618014.766 E
2	1736304.086 N	618020.849 E
3	1736300.248 N	619374.707 E
4	1736296.567 N	620676.863 E
5	1737633.008 N	620679.743 E
6	1737634.012 N	620228.984 E
7	1738143.837 N	620121.329 E
8	1738134.014 N	620040.452 E
9	1738342.580 N	620015.125 E
10	1738343.863 N	619353.010 E
11	1738188.115 N	619327.455 E
12	1738179.841 N	619358.248 E
13	1738144.641 N	619429.672 E
14	1738253.544 N	619513.036 E
15	1738253.131 N	619724.654 E
16	1738196.274 N	619749.093 E
17	1737802.371 N	620056.667 E
18	1737807.099 N	619826.796 E
19	1737875.517 N	619598.780 E
20	1737794.100 N	619502.928 E
21	1737963.611 N	619088.780 E
22	1738364.141 N	618835.134 E
23	1739322.981 N	618831.904 E
24	1739393.290 N	618774.769 E
25	1739471.226 N	618440.328 E
26	1739512.522 N	618305.689 E
27	1739518.585 N	618133.057 E
28	1739471.177 N	617974.888 E
29	1739395.927 N	617931.497 E
30	1739092.339 N	617895.026 E
31	1738872.716 N	617797.299 E
32	1738608.708 N	617583.566 E
33	1738681.391 N	617342.459 E
34	1738782.320 N	617236.007 E
35	1739375.694 N	617349.662 E
36	1739519.454 N	617131.463 E
37	1739731.094 N	616359.810 E
38	1739386.581 N	615823.487 E
39	1739289.917 N	615817.435 E
40	1739268.024 N	615941.233 E
41	1739440.527 N	616408.210 E
42	1739427.784 N	617169.467 E
43	1738828.324 N	617145.555 E
44	1738085.700 N	616854.915 E
45	1738084.559 N	616681.028 E
46	1738550.381 N	616473.605 E
47	1738761.975 N	616555.899 E
48	1738679.357 N	616787.962 E
49	1738812.247 N	616835.267 E
50	1738830.056 N	616840.430 E
51	1738871.457 N	616657.300 E
52	1739188.867 N	616536.227 E
53	1739181.213 N	616479.585 E
54	1739168.526 N	616435.790 E
55	1739072.089 N	616225.271 E
56	1738950.180 N	616281.118 E
57	1738799.780 N	616168.349 E
58	1737958.450 N	615963.238 E
59	1737956.793 N	616043.164 E
60	1738289.381 N	616217.184 E
61	1738198.915 N	616417.425 E
62	1737830.734 N	616474.826 E
63	1737291.404 N	616616.808 E
64	1737082.100 N	616517.042 E
65	1737071.798 N	616217.236 E
66	1736736.356 N	616266.494 E
67	1736735.195 N	616473.441 E
68	1736591.163 N	616686.232 E
69	1736587.377 N	616895.742 E
70	1736047.578 N	617353.342 E
71	1735672.077 N	617528.705 E
72	1735545.791 N	617358.737 E
73	1735491.732 N	617398.902 E
74	1735439.613 N	617467.404 E
75	1735392.983 N	617449.372 E
76	1735258.662 N	617268.643 E
77	1735596.343 N	616954.659 E
78	1736091.771 N	616827.548 E
79	1736151.646 N	616908.130 E
80	1736230.720 N	616864.873 E
81	1736311.321 N	616729.770 E
82	1736311.547 N	616689.274 E
83	1735014.119 N	616685.919 E
84	1736315.277 N	616023.464 E
85	1736627.308 N	616023.942 E
86	1737186.591 N	616024.789 E
87	1737169.751 N	616159.863 E
88	1737114.606 N	616180.481 E
89	1736657.219 N	616227.629 E
90	VOID	
91	VOID	
92	1738121.563 N	615358.389 E
93	1739410.150 N	615358.639 E
94	1739336.462 N	615468.062 E
95	1738615.401 N	615642.011 E
96	1738403.705 N	615634.930 E
97	1738333.223 N	615621.588 E
98	1738118.637 N	615619.176 E

CURVE TABLE

NO.	DELTA	RADIUS	ARC LENGTH	TANGENT	CHORD LENGTH & BEARING
1	22°23'50"	205.00	80.14	40.59	79.63 S63°39'50"E
2	6°51'25"	155.00	18.55	9.29	18.54 N16°16'05"E
3	16°55'02"	155.00	45.77	23.05	45.60 S73°58'48"W
4	32°14'40"	155.00	87.23	44.80	86.08 S52°38'03"E
5	60°59'51"	155.00	165.01	91.30	157.33 N59°04'48"W
6	15°27'42"	205.00	55.32	27.83	55.15 S00°31'23"E
7	20°09'19"	205.00	72.11	36.43	71.74 S10°49'14"W
8	21°21'21"	180.00	67.09	33.94	66.70 N11°02'51"E
9	10°29'46"	180.00	32.97	16.53	32.93 N 5°37'04"E
10	10°51'34"	180.00	34.12	17.11	34.07 N16°17'44"E
11	21°21'21"	180.00	67.09	33.94	66.70 N11°02'51"E
12	43°47'12"	180.00	137.56	72.34	134.24 N21°31'26"W
13	37°00'49"	180.00	116.28	60.25	114.27 N65°05'23"E
14	11°12'29"	180.00	35.21	17.68	35.15 N89°12'02"E
15	21°02'02"	180.00	66.08	33.42	65.71 N84°17'15"E
16	18°31'09"	180.00	58.18	29.35	57.93 N83°01'49"E
17	102°08'07"	180.00	320.76	279.97	N41°14'20"E
18	30°26'08"	180.00	95.62	48.98	94.50 N25°01'48"W
19	49°55'02"	180.00	156.82	83.78	151.91 N73°41'36"E
20	48°02'16"	180.00	144.63	76.48	140.77 S87°22'03"E
21	35°37'34"	180.00	111.92	57.84	110.13 S46°32'07"E
22	52°37'34"	180.00	165.33	89.01	159.58 S55°02'06"E
23	32°41'26"	180.00	102.70	52.79	101.31 N 7°36'55"E
24	31°02'51"	180.00	97.50	49.88	96.31 N 6°47'12"E
25	29°19'28"	180.00	92.13	47.10	91.12 N 7°38'28"E
26	21°21'21"	205.00	76.41	38.65	75.97 N11°02'51"E
27	39°27'35"	205.00	141.18	73.52	138.41 N19°21'37"W
28	4°19'37"	205.00	15.48	7.74	15.48 N41°15'13"W
29	90°00'00"	25.00	39.27	25.00	35.36 N 1°34'58"E
30	90°00'00"	25.00	39.27	25.00	35.36 S89°25'02"E
31	89°31'06"	25.00	39.06	24.79	35.21 N66°29'04"E
32	69°07'33"	25.00	30.16	17.22	28.37 S34°11'36"E
33	89°56'26"	25.00	39.24	24.97	35.34 N45°20'23"E
34	90°03'34"	25.00	39.30	25.03	35.37 S44°39'37"E
35	21°21'21"	155.00	57.77	29.23	57.44 N11°02'51"E
36	21°21'21"	155.00	57.77	29.23	57.44 N11°02'51"E
37	43°47'12"	155.00	118.45	62.29	115.59 N21°31'26"W
38	37°00'49"	155.00	100.13	51.88	98.40 N65°05'23"E
39	11°12'29"	155.00	30.32	15.21	30.27 N89°12'02"E
40	21°02'02"	155.00	56.90	28.77	56.58 N84°17'15"E
41	18°31'09"	155.00	50.10	25.27	49.88 N83°01'49"E
42	25°38'36"	155.00	69.37	35.28	68.79 N79°28'07"E
43	76°27'32"	155.00	206.84	122.10	191.83 N28°25'02"E
44	30°26'08"	155.00	82.34	42.16	81.37 N25°01'48"E
45	48°02'16"	155.00	124.54	65.85	121.22 S87°22'03"E
46	32°41'26"	155.00	88.44	45.46	87.24 N 7°36'55"E
47	35°37'35"	155.00	96.38	49.80	94.83 S46°32'07"E
48	52°37'34"	155.00	142.37	76.65	137.42 S55°02'06"E
49	49°55'02"	155.00	135.04	72.14	130.81 N73°41'36"E
50	88°58'57"	25.00	38.83	24.56	35.04 N 4°14'38"E
51	91°01'03"	25.00	39.71	25.45	35.67 S85°45'24"E
52	49°55'02"	205.00	178.60	95.41	173.01 N73°41'36"E
53	52°02'33"	60.00	54.50	29.29	52.64 N00°42'07"E
54	35°57'56"	60.00	37.66	19.48	37.05 N44°42'21"E
55	60°53'38"	60.00	63.77	35.27	60.81 S86°51'53"E
56	53°58'05"	25.00	23.55	12.73	22.69 S83°24'08"E
57	33°59'04"	60.00	35.59	18.33	35.07 S42°18'42"E
58	31°23'38"	60.00	32.88	16.86	32.47 S75°00'02"E
59	40°24'21"	60.00	42.31	22.08	41.44 N69°05'58"E
60	33°15'03"	60.00	34.82	17.92	34.33 N32°16'16"E
61	53°58'05"	25.00	23.55	12.73	22.69 N42°37'47"E
62	20°12'16"	205.00	72.29	36.52	71.92 N79°42'58"E
63	25°49'59"	205.00	92.43	47.01	91.65 S77°15'55"E
64	91°41'26"	25.00	40.01	25.75	35.87 N69°48'22"E
65	88°18'34"	25.00	38.53	24.27	34.83 N20°11'58"W
66	32°41'26"	205.00	116.97	60.12	115.39 N 7°36'55"E
67	18°37'49"	205.00	66.66	33.63	66.36 S55°02'00"E
68	16°59'48"	205.00	60.81	30.63	60.59 S37°13'13"E
69	16°38'34"	205.00	59.43	29.92	59.22 S37°01'37"E
70	21°32'47"	205.00	77.09	39.01	76.64 S56°08'17"E
71	14°28'13"	205.00	51.77	26.03	51.64 S74°06'47"E
72	17°58'51"	205.00	64.33	32.43	64.07 N55°34'24"E
73	19°01'58"	205.00	68.10	34.37	67.79 N74°04'48"E
74	11°12'29"	205.00	40.10	20.11	40.04 N89°12'02"E
75	21°02'02"	205.00	75.26	38.08	74.84 N84°17'15"E
76	18°31'09"	205.00	66.26	33.42	65.97 N83°01'49"E
77	5°22'11"	205.00	19.21	9.61	19.21 N89°36'18"E
78	29°18'00"	205.00	104.83	53.59	103.69 N72°16'12"E
79	27°46'42"	205.00	99.39	50.69	98.42 N43°43'51"E
80	39°39'18"	205.00	141.88	73.91	139.06 N10°00'53"E
81	10°28'08"	205.00	37.38	18.72	37.29 N15°01'48"W
82	20°00'00"	205.00	71.56	36.15	71.20 N30°14'52"W
83	25°18'03"	205.00	90.52	46.01	89.79 N 3°55'13"E
84	5°43'58"	205.00	20.51	10.26	20.50 N19°26'13"E
85	20°09'48"	205.00	72.14	36.45	71.77 N12°13'19"E
86	9°09'42"	205.00	32.78	16.42	32.74 N 2°26'25"W
87	53°58'05"	25.00	23.55	12.73	22.69 N19°57'47"E
88	48°26'31"	60.00	48.63	25.74	47.31 N23°43'34"E
89	68°53'39"	60.00	70.05	39.63	66.14 N32°56'30"W
90	53°58'05"	25.00	23.55	12.73	22.69 S34°00'18"E
91	71°33'20"	60.00	74.83	43.24	70.16 N25°12'41"W
92	54°59'05"	60.00	57.58	31.22	55.40 N38°03'32"E
93	48°03'36"	60.00	50.33	26.75	48.87 N89°34'52"E
94	31°02'01"	155.00	83.95	43.03	82.93 N 6°47'12"E
95	29°19'28"	155.00	79.33	40.55	78.47 N 7°38'28"E
96	90°00'00"	15.00	23.56	15.00	21.21 S52°25'02"E
97	37°34'56"	100.00	65.59	34.00	64.42 S71°12'31"E

