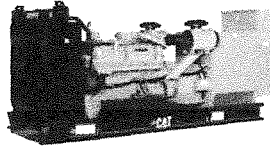


# MID FLORIDA DIESEL



2215 HIGHWAY 60 EAST  
BARTOW, FL. 33830  
(863) 519-0107 FAX (863) 519-0109  
WWW.MIDFLORIDADIESEL.COM

October 21, 2024

## PROPOSAL

For

**80KW Diesel Generator**

**Florida Sheriff Association Bid FSA23-EQU21.0 Item #151**

**Marion County**

**ATTN: Karen Holgate**

Mid Florida Diesel submits the following proposal for the project:

**Blue Star Power Systems MODEL: (Qty. - 3) JD80-02**

(Quote # 10212024-JA)

**GENERATOR: 80 kW**

**VOLTAGE: 240 volt Three-Phase**

**ENGINE: John Deere 4045HF285, 60 Hz Diesel, 1800 RPM**

**Standard Features Included:**

Microprocessor based, digital readout control system.

Engine vitals monitored by LCD display: Oil pressure, Running time, Engine temperature, Safety shutdowns (HWT, OC, OS, OP, LWL), Battery voltage, Generator AC voltage, AC amperage, Frequency.

Additional Features: Oil drain extension, Vibration isolation pads, Water heater, Fuel solenoid valve.

**Selected Model Features Included:**

Isochronous Governor + / - .25%

UL2200

EPA Tier III Certified

Stamford UC1274E 12 Lead Wired 480V 3 Phase High Wye 80°C Rise Over 40°C Ambient

**CONTROL PANEL: DGC-2020 Control Panel (Expanded)**

Blue Star DGC-2020 Microprocessor Based Gen-Set Controller

Mounted Facing Left from Generator End (Unless Specified Otherwise)

Standard Features: Low Oil Pressure, High Coolant Temp, Overspeed, Overcrank Shutdowns

Emergency Stop Pushbutton, Audible Alarm Buzzer with Silencing Switch

Optional Features Include: Generator Protection (Undervoltage, Overvoltage, Underfrequency,

Overfrequency, Overcurrent)

**Included Accessories**

**ENCLOSURE:**

**Weather Proof Steel Enclosure-- Level II**

Weather Proof Enclosure- Made with 14 Gauge Steel with louvered rear opening for air intake and punched side air openings for air intake and silencer is mounted inside

enclosure with exhaust exiting through front sound compartment. Pitched roof for increased structural integrity and improved watershed. Lockable handles keyed alike with hinged doors

**Accessories:**

Sound Attenuation Foam 1.5"  
150 mph Wind Load Rated  
Color-White

**COOLING SYSTEM:**

Unit Mounted Radiator

**Accessories:**

Low Coolant Level Shutdown

**CIRCUIT BREAKERS:**

250A BREAKER – 240v Thermal Magnetic 80% rated  
Mounted and Wired in a NEMA 1 Enclosure (Qty: (1 per gen)  
Circuit Breaker - UL listed and CSA certified.

**Accessories:**

**BATTERY:**

Lead Acid Battery

**BLOCK HEATER:**

Standard @ 20 F w/isolation valves  
120v 1 phase

**VIBRATION ISOLATION:**

Vibration Pads Isolator

**BATTERY CHARGER:**

(12 Volt, 6 Amp)

**Included Accessories:**

**SUB BASE TANK:**

**Sub Base Fuel Tank Steel (with Stub Up) (250 Gallons Capacity-24hrs run time)**

**Accessories:**

UL 142 Approved

Double Wall

Emergency Pressure Relief Vent Cap Set (1/2 PSI) - 2" (1)

1.5" Normal Vent Cap

**MUFFLER:**

Critical Grade Muffler –

**Accessories:**

Rain Cap

**MISCELLANEOUS:**

Certified Factory Test

Manual – One (1) Instruction Manuals

2 Yr/2000 Hr Standby Limited Warranty

Test Acceptance Run by Factory Trained Representative (Start Up)

**NOTES:**

1. This proposal is our interpretation of your requirement and includes only the items listed. Should there be other requirements or specifications, we will requote accordingly.
2. Units are shipped wet to include lube oil and a 50/50 water and anti-freeze mix unless otherwise noted in this quotation.
3. Startup performed upon notification of completed installation by installing contractor.
4. CANCELLATION: Shall be subject to applicable fees but no less than 20% of the purchase price
6. EXCLUSIONS: Installation of any kind, Offloading of Generator, Placement of Generator on Pad, Fuel, Springs Isolator, Tank, Piping, and Insulation. We have not seen specs.
7. Start Up included in price
8. Freight included in the price. Off-loading of generator by others
9. Terms: Net 30 Day-- No retain age without written pre-accepted agreement.

**Proposal Summary:** FSA Item #151 Standard Blue Star JD125-02 Bid: \$47,430.00  
FSA Item #151 Credit Option-Downgrade to an JD80-02 -Deduct: -\$5,050.00

Sub-Total Price: \$42,380.00  
X 3 Each  
**Total Price: \$127,140.00**  
(Tax Not Included)

**NOTES:**

1. This proposal is our interpretation of your requirement and includes only the items listed. Should there be other requirements or specifications, we will requote accordingly.
2. Units are shipped wet to include lube oil and a 50/50 water and anti-freeze mix unless otherwise noted in this quotation.
3. Startup performed upon notification of completed installation by installing contractor.
4. CANCELLATION: Shall be subject to applicable fees but no less than 20% of the purchase price
6. EXCLUSIONS: Installation of any kind, Offloading of Generator, Placement of Generator on Pad, Fuel, Springs Isolator, Tank, Piping, and Insulation. We have not seen specs.
7. Start Up included in price
8. Freight included in the price. Off-loading of generator by others
9. Terms: Net 30 Day-- No retain age without written pre-accepted agreement.

**Note:**

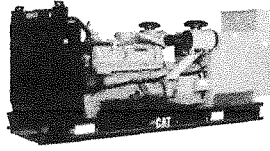
\*\*\*\*\*

Quoted prices do not include Federal, State or Local taxes which may be applicable. Quoted prices include normal testing, packaging and instructional literature. Special testing, packaging, additional instructional literature, parts, provisioning lists or prints are not included, and prices will be quoted separately.

Quotation Firm for 30 Day(s)  
Delivery Notes: 30-32 Weeks (Contingent on component availability)

BY: Joe Antonini  
Joe Antonini  
Mid Florida Diesel, Inc.

# MID FLORIDA DIESEL



2215 HIGHWAY 60 EAST  
BARTOW, FL. 33830  
(863) 519-0107 FAX (863) 519-0109  
WWW.MIDFLORIDADIESEL.COM

October 21, 2024

## PROPOSAL

For

150KW Diesel Generator

Florida Sheriff Association Bid FSA23-EQU21.0 Item #151

Marion County

ATTN: Karen Holgate

Mid Florida Diesel submits the following proposal for the project:

Blue Star Power Systems MODEL: (Qty. - 1) JD150-01

(Quote # 10212024-JA)

GENERATOR: 150kW

VOLTAGE: 240 volt Three-Phase

ENGINE: John Deere 6068HF285, 60 Hz Diesel, 1800 RPM

### Standard Features Included:

Microprocessor based, digital readout control system.

Engine vitals monitored by LCD display: Oil pressure, Running time, Engine temperature, Safety shutdowns (HWT, OC, OS, OP, LWL), Battery voltage, Generator AC voltage, AC amperage, Frequency.

Additional Features: Oil drain extension, Vibration isolation pads, Water heater, Fuel solenoid valve.

### Selected Model Features Included:

Isochronous Governor + / - .25%

UL2200

EPA Tier III Certified

Stamford UCI274G 12 Lead Wired 240V 3 Phase Delta 125°C Rise Over 40°C Ambient

### CONTROL PANEL: DGC-2020 Control Panel (Expanded)

Blue Star DGC-2020 Microprocessor Based Gen-Set Controller

Mounted Facing Left from Generator End (Unless Specified Otherwise)

Standard Features: Low Oil Pressure, High Coolant Temp, Overspeed, Overcrank Shutdowns

Emergency Stop Pushbutton, Audible Alarm Buzzer with Silencing Switch

Optional Features Include: Generator Protection (Undervoltage, Overvoltage, Underfrequency,

Overfrequency, Overcurrent)

Included Accessories

### ENCLOSURE:

#### Weather Proof Steel Enclosure-- Level II

Weather Proof Enclosure- Made with 14 Gauge Steel with louvered rear opening for air intake and punched side air openings for air intake and silencer is mounted inside enclosure with exhaust exiting through front sound compartment. Pitched roof for increased structural integrity and improved watershed. Lockable handles keyed alike with hinged doors

**Accessories:**

Sound Attenuation Foam 1.5"  
150 mph Wind Load Rated  
Color-White

**COOLING SYSTEM:**

Unit Mounted Radiator

**Accessories:**

Low Coolant Level Shutdown

**CIRCUIT BREAKERS:**

450 Amp 3 Pole 600Thermal Magnetic 80% rated  
Mounted and Wired in a NEMA 1 Enclosure (Qty: (1 per gen)  
Circuit Breaker - UL listed and CSA certified.

**Accessories:**

**BATTERY:**

Lead Acid Battery

**BLOCK HEATER: 2000W 240VAC**

Standard @ 20 F w/isolation valves  
240v 1 phase

**VIBRATION ISOLATION:**

Vibration Pads Isolator

**BATTERY CHARGER:**

(12 Volt, 6 Amp)

**Included Accessories:**

**SUB BASE TANK:**

**Sub Base Fuel Tank Steel (with Stub Up) (375 Gallons Capacity-24hrs run time)**

**Accessories:**

UL 142 Approved  
Double Wall  
Emergency Pressure Relief Vent Cap Set (1/2 PSI) - 2" (1)  
1.5" Normal Vent Cap

**MUFFLER:**

Critical Grade Muffler –

**Accessories:**

Rain Cap

**MISCELLANEOUS:**

Certified Factory Test  
Manual – One (1) Instruction Manuals  
2 Yr/2000 Hr Standby Limited Warranty  
Test Acceptance Run by Factory Trained Representative (Start Up)

**NOTES:**

1. This proposal is our interpretation of your requirement and includes only the items listed. Should there be other requirements or specifications, we will requote accordingly.
2. Units are shipped wet to include lube oil and a 50/50 water and anti-freeze mix unless otherwise noted in this quotation.
3. Startup performed upon notification of completed installation by installing contractor.
4. CANCELLATION: Shall be subject to applicable fees but no less than 20% of the purchase price
6. EXCLUSIONS: Installation of any kind, Offloading of Generator, Placement of Generator on Pad, Fuel, Springs Isolator, Tank, Piping, and Insulation. We have not seen specs.
7. Start Up included in price
8. Freight included in the price. Off-loading of generator by others
9. Terms: Net 30 Day-- No retain age without written pre-accepted agreement.

**Proposal Summary:**

FSA Item #151 Standard Blue Star JD125-02 Bid: \$47,430.00  
FSA Item #151 Adder Option-Upgrade to an JD150-01: \$9,155.00

**Total Price: \$56,585.00**  
(Tax Not Included)

**NOTES:**

1. This proposal is our interpretation of your requirement and includes only the items listed. Should there be other requirements or specifications, we will requote accordingly.
2. Units are shipped wet to include lube oil and a 50/50 water and anti-freeze mix unless otherwise noted in this quotation.
3. Startup performed upon notification of completed installation by installing contractor.
4. CANCELLATION: Shall be subject to applicable fees but no less than 20% of the purchase price
6. EXCLUSIONS: Installation of any kind, Offloading of Generator, Placement of Generator on Pad, Fuel, Springs Isolator, Tank, Piping, and Insulation. We have not seen specs.
7. Start Up included in price
8. Freight included in the price. Off-loading of generator by others
9. Terms: Net 30 Day-- No retain age without written pre-accepted agreement.

**Note:** sheets

\*\*\*\*\*

Quoted prices do not include Federal, State or Local taxes which may be applicable. Quoted prices include normal testing, packaging and instructional literature. Special testing, packaging, additional instructional literature, parts, provisioning lists or prints are not included, and prices will be quoted separately.

Quotation Firm for 30 Day(s)  
Delivery Notes: 30-32 Weeks (Contingent on component availability)

BY: Joe Antonini  
Joe Antonini  
Mid Florida Diesel, Inc.



## Marion County Board of County Commissioners

### Utilities Department

11800 SE U.S. Highway 441  
Bellevue, FL 34420  
Phone: 352-307-6000 (available 24/7)  
Fax: 352-307-6001

### Memorandum

**To:** Mounir Bouyounes, P.E., County Administrator

**Through:** Angel Roussel, P.E., Assistant County Administrator – Public Works

**Through:** Jody C. Kirkman, P.E., Utilities Director

**From:** Joshua Kramer, Utilities Deputy Director

**Date:** October 28, 2024

**Re:** Request to Purchase Replacement Capital Assets not in the FY25 Budget.

---

The Utilities Department acquired the Marion Utilities, Inc. utilities system and began operating the system in June of 2021. Included in the acquisition are the following facilities: Cedar Hills, Hi-Cliff Estates, Pine Ridge Estates, and Spruce Creek North Water Treatment Plants which are critical infrastructure utilized by the department to provide and maintain potable water and fire protection to the water distributions for those utility service areas.

Upon inspection of the stationary backup generators it was noted that they required extensive repairs. After in-depth evaluations and attempts to repair these generators by the Fleet Management Department, it was determined that the generator units would need to be replaced. Due to regulations requiring on-site stand-by emergency power requirements for each site, staff positioned portable generators at each water treatment plant to maintain compliance and maintain the current level of service. The portable generators utilized at the sites are actually required to maintain the department's 197 lift stations located throughout the county. With the recent Hurricane Milton storm event the utilities department experienced a loss of commercial power to more than 60 lift stations, which proved challenging without these portable additional units in the resource pool.

The Utilities Department is requesting approval to conduct an out-of-cycle purchase to replace the existing stationary generators located at the above-mentioned water treatment plants. The proposed new stationary generators will be purchased utilizing the Florida Sheriff's bid for a total cost of \$183,725.00. The below table provides a breakdown of the proposed manufacturer and cost per unit/site. The Fleet Management Department has approved the selected make and model generators proposed to replace the existing systems at these facilities. Because these capital assets were not budgeted in the FY25 Budget, Utilities is requesting funds be made available to purchase the new units from the Water Department Machinery and Equipment Budget Line (ZF442533-564101) after transferring available funds from Reserves.

<b>SITE</b>	<b>SIZE</b>	<b>MANUFACTURER</b>	<b>COST</b>
Cedar Hills WTP	80 KW	Blue Star Power Systems	\$ 42,380.00
Hi-Cliff Estates	80 KW	Blue Star Power Systems	\$ 42,380.00
Pine Ridge Estates	80 KW	Blue Star Power Systems	\$ 42,380.00
Spruce Creek North	150 KW	Blue Star Power Systems	\$ 56,585.00
<b>TOTAL</b>			<b>\$183,725.00</b>



## Holgate, Karen

---

**From:** Kramer, Joshua  
**Sent:** Wednesday, October 30, 2024 3:54 PM  
**To:** Holgate, Karen  
**Cc:** Williams, Mark; Davis, Billy; Corneilson, John  
**Subject:** FW: Off-cycle Generator Replacement Purchase  
**Attachments:** Off-cycle Generator Replacement Purchases\_Memo 10-18-24.docx; JD80-02\_SpecSheet.pdf; JD150-01\_SpecSheet.pdf

Karen,

Please see Angel's email below indicating that we have the green light to purchase the replacement generators indicated in the memo that's attached. John will prepare the BAR but we would like both to be on the same Board meeting.

**Joshua Kramer**  
*Deputy Director*  
Utilities

Main: 352-307-6000 | Direct: 352-438-2383 | FAX: 352-307-6001  
*Empowering Marion for Success!*

**From:** Roussel, Angel <Angel.Roussel@marionfl.org>  
**Sent:** Wednesday, October 30, 2024 1:42 PM  
**To:** Kramer, Joshua <Joshua.Kramer@marionfl.org>  
**Subject:** FW: Off-cycle Generator Replacement Purchase

Hi Josh,

Green light. Can you get an answer to his question? And if they are, why?

Thank you,

**Angel Roussel, P.E.**  
*Assistant County Administrator*  
Administration  
Main: 352-438-2300  
*Empowering Marion for Success!*