

SITE LANDSCAPE REQUIREMENTS

SITE TREE REQUIREMENTS

SITE: 1.033 AC (43,690 S.F.)
 SITE TREE REQUIREMENT: 1 / 5000 = 19 SHADE TREES
 PROVIDED: 0 EXISTING SHADE TREES
 19 PROPOSED SHADE TREES

LANDSCAPE AREA REQUIREMENT:

REQUIRED: 1.033 AC X 20 = 2 AC (8712 S.F.)
 PROVIDED: 8493

R.O.A. RETENTION AREA BUFFER REQUIREMENT (50 L.F.):

4 CANOPY TREES AND 200 S.F. OF PLANTINGS PER 100 L.F.

50 L.F./100 = 0.50 X 4 = 2 CANOPY TREES

50 L.F. / 100 = 0.50 X 200 = 100 S.F. OF PLANTING

PROVIDED:

-CANOPY TREES: 2 UNDERSTORY TREES (DUE TO OVERHEAD POWERLINES)

-SHRUBS / GROUND COVER = 200 S.F. OF PLANTING

TYPE 'C' (200 L.F.) BUFFER REQUIREMENT:

15' WIDE

-2 CANOPY TREES AND 3 UNDERSTORY TREES PER 100 L.F. ON AVERAGE, 50% PLANTED WITH SHRUBS / GROUND COVER.

200 L.F./100 = 2.0 X 2 = 4 CANOPY TREES

2.0 X 3 = 6 UNDERSTORY TREES

200 X 15' = 3,000 S.F. X 50 = 1,500 S.F. OF PLANTING

PROVIDED:

12 PROPOSED UNDERSTORY TREES (DUE TO OVERHEAD POWER LINES),

AND PROPOSED SHRUB AREA = 1500 S.F.

SOUTH US HWY 441

TYPE 'B' (200 L.F.) BUFFER REQUIREMENT:

15' WIDE

-BUFFER MALL

-3 CANOPY TREES AND 3 UNDERSTORY TREES PER 100 L.F. ON AVERAGE, 50% PLANTED WITH SHRUBS / GROUND COVER.

200 L.F./100 = 2.0 X 2 = 4 CANOPY TREES

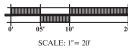
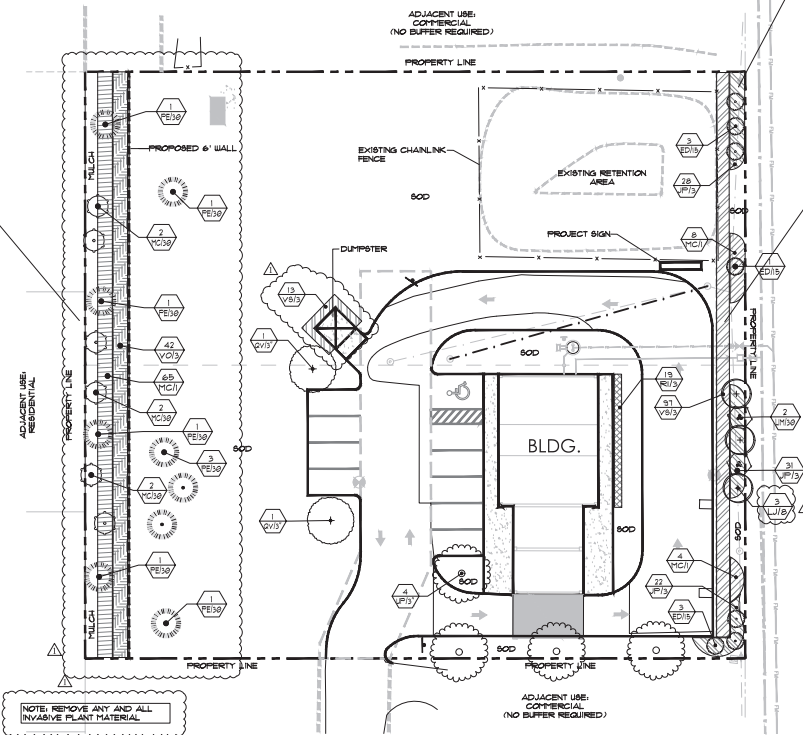
2.0 X 3 = 6 UNDERSTORY TREES

200 X 20' = 4,000 S.F. X 50 = 2,000 S.F. OF PLANTING

PROVIDED:

MALL: 4 CANOPY TREES, 6 PROPOSED UNDERSTORY TREES, AND

PROPOSED SHRUB AREA = 751 S.F.



NO.	DATE	DESCRIPTION
1	11/27/24	INITIAL COUNTY SUBMITTAL
2	12/26/24	REVISIONS PER COUNTY COMMENTS

Scrubs II, LLC
 PERMIT / CONSTRUCTION PLANS
 MARGON COUNTY, FLORIDA
 PREPARED FOR:
 Scrubs II LLC



DATE: 11-20-24
 PROJECT NO.: SC024-01.01
 DRAWN BY: JHB
 DESIGNED BY: BHR/JHB
 CHECKED BY: BHR

SHEET NO.
L.01