

August 20, 2025

PROJECT NAME: FIRESTONE OCALA FREEDOM

PROJECT NUMBER: 2024090064

APPLICATION: MAJOR SITE PLAN #32039

- 1 DEPARTMENT: ENGDRN - STORMWATER REVIEW  
REVIEW ITEM: 6.13.10.B - Copy of NPDES Permit or NOI  
STATUS OF REVIEW: INFO  
REMARKS: Please provide a copy of the NPDES permit or NOI prior to construction.
- 2 DEPARTMENT: ENGDRN - STORMWATER REVIEW  
REVIEW ITEM: Copy of District Permit (County Interest)  
STATUS OF REVIEW: INFO  
REMARKS: Please provide a copy of the NPDES permit or NOI prior to construction.
- 3 DEPARTMENT: ENGIN - DEVELOPMENT REVIEW  
REVIEW ITEM: 2.12.4.K - List of approved waivers, their conditions, and the date of approval  
STATUS OF REVIEW: INFO  
REMARKS: 10/23/24-add waivers if requested in future
- 4 DEPARTMENT: ENGIN - DEVELOPMENT REVIEW  
REVIEW ITEM: Additional Development Review Comments  
STATUS OF REVIEW: INFO  
REMARKS: After approval, plans will be electronically stamped by the County. The applicant will receive an email indicating that approved plans are available for download and are located in the ePlans project Approved folder. For Development Review submittals, with the exception of Final Plats and Minor Site Plans, applicants are required to print, obtain required signatures, and sign and seal two 24"x 36" sets of the electronically stamped approved plan and deliver them to the Office of County Engineer, Development Review Section, located at 412 SE 25th Avenue Ocala, FL 34471. Upon receipt, a development order will be issued. Until such time as that development order is issued, the project does not have final approval and construction, if applicable, shall not commence. For plans requiring As-Builts, As-Builts and associated documentation shall be submitted on paper in accordance with current county requirements.
- 5 DEPARTMENT: DOH - ENVIRONMENTAL HEALTH  
REVIEW ITEM: Additional Health comments  
STATUS OF REVIEW: INFO  
REMARKS: Central Sewer/Central Water
- 6 DEPARTMENT: LUCURR - LAND USE CURRENT REVIEW  
REVIEW ITEM: 2.12.5/1.8.2.A - Concurrency/Traffic - Study/Capacity Available?  
STATUS OF REVIEW: INFO  
REMARKS:
- 7 DEPARTMENT: LUCURR - LAND USE CURRENT REVIEW  
REVIEW ITEM: Additional Planning Items:  
STATUS OF REVIEW: INFO  
REMARKS: [03/04/2025 - additional comments] What is the status of platting for the site and adjoining properties. Until the status of the parcels is resolved, the plan may not be approved unless suitable waivers are enabled; however, resolution of the issue will need to be achieved prior to obtaining and final inspections for buildings.

[02/17/2025] Waiting for Plat approval. No conditional approval for Major Site Plan permit. This item will remain as NO until the Plat is submitted and approved.

1/10/25 - No response has been provided in regard to this comment.

PRIOR COMMENT: What is the status of platting this "Tract 3" portion of the commercial area? (For instance, a plat was filed for the "Tract 1" portion, although it has not proceeded beyond its first review at this time.)

8 DEPARTMENT: ENGDRN - STORMWATER REVIEW

REVIEW ITEM: 6.13.2.A(3) - Retention/Detention Area Design Parameters

STATUS OF REVIEW: NO

REMARKS: As discussed via email, the pond bottom needs to be stabilized with sod. Staff would support a waiver

9 DEPARTMENT: ENGTRF - TRAFFIC REVIEW

REVIEW ITEM: 6.11.4.B - Cross access

STATUS OF REVIEW: NO

REMARKS: 8/1/25 - Following an extensive review, the required public cross-access has not been provided. Reference documents provided indicate flexible terms of access by participants within the development but not by the public. Recommendation is to utilize the County pre-approved cross-access agreement form, exhibiting the implied cross-access represented by the plans and clearly specifying the extent of the cross-access being provided on sheet C1.1.

4/21/25 - Easement details are being finalized - plan approval subject to recorded easement.

3/21/25 - Cross access is adequately shown as indicated; it is understood that recording easement is a work in progress - unable to approve until easement matching plans is recorded.

2/17/25 - Cross access easement must be recorded or shown on approved plat prior to final plan approval.

12/23/24 - 1) Ensure cross access easement is shown on plans. 2) Need to verify recording of easement as applicant has stated would be done to enable final plan approval.

11/1/24 - A minimum of 24' wide paved public ingress / egress cross-access easement is required parallel to SW 95th Street from property line to property line and must be specified on plans. The heavy-duty pavement area satisfies the pavement requirement. Contact Cheryl Weaver in the Right-of-Way Office at 352-671-8679 to obtain the appropriate template and for recording the easement which must be executed prior to final plan approval.

Feel free to contact us at (352) 671-8686 or [DevelopmentReview@marionfl.org](mailto:DevelopmentReview@marionfl.org) with questions.

Sincerely,

*Your Development Review Team*  
**Office of the County Engineer**



**Marion County  
Board of County Commissioners**

32039

Office of the County Engineer

412 SE 25th Ave.  
Ocala, FL 34471  
Phone: 352-671-8686  
Fax: 352-671-8687

**DEVELOPMENT REVIEW COMMITTEE WAIVER REQUEST FORM**

Date: 08.18.2025 Parcel Number(s): 35699-006-06 & 35699-006-04 Permit Number: 2024-10-1200

**A. PROJECT INFORMATION:** Fill in below as applicable:

Project Name: Firestone Freedom Crossing Ocala Commercial ☒ Residential ☐  
Subdivision Name (if applicable): \_\_\_\_\_  
Unit \_\_\_\_\_ Block \_\_\_\_\_ Lot \_\_\_\_\_ Tract \_\_\_\_\_

**B. PROPERTY OWNER'S AUTHORIZATION:** The property owner's signature authorizes the applicant to act on the owner's behalf for this waiver request. The signature may be obtained by email, fax, scan, a letter from the property owner, or original signature below.

Name (print): Palmetto Ocala-Freedom Lot 13, LLC  
Signature: \_\_\_\_\_  
Mailing Address: 632 E Main Street, Suite # 301 City: Lakeland  
State: Florida Zip Code: 33801 Phone # 863.808.1320  
Email address: jeff@palmettoci.com

**C. APPLICANT INFORMATION:** The applicant will be the point of contact during this waiver process and will receive all correspondence.

Firm Name (if applicable): Great Southern Constructors Contact Name: Kristin Robb  
Mailing Address: 145 Wilmette Ave City: Ormond Beach  
State: Florida Zip Code: 32174 Phone # 407.672.1258  
Email address: krobb@gsconstructs.com

**D. WAIVER INFORMATION:**

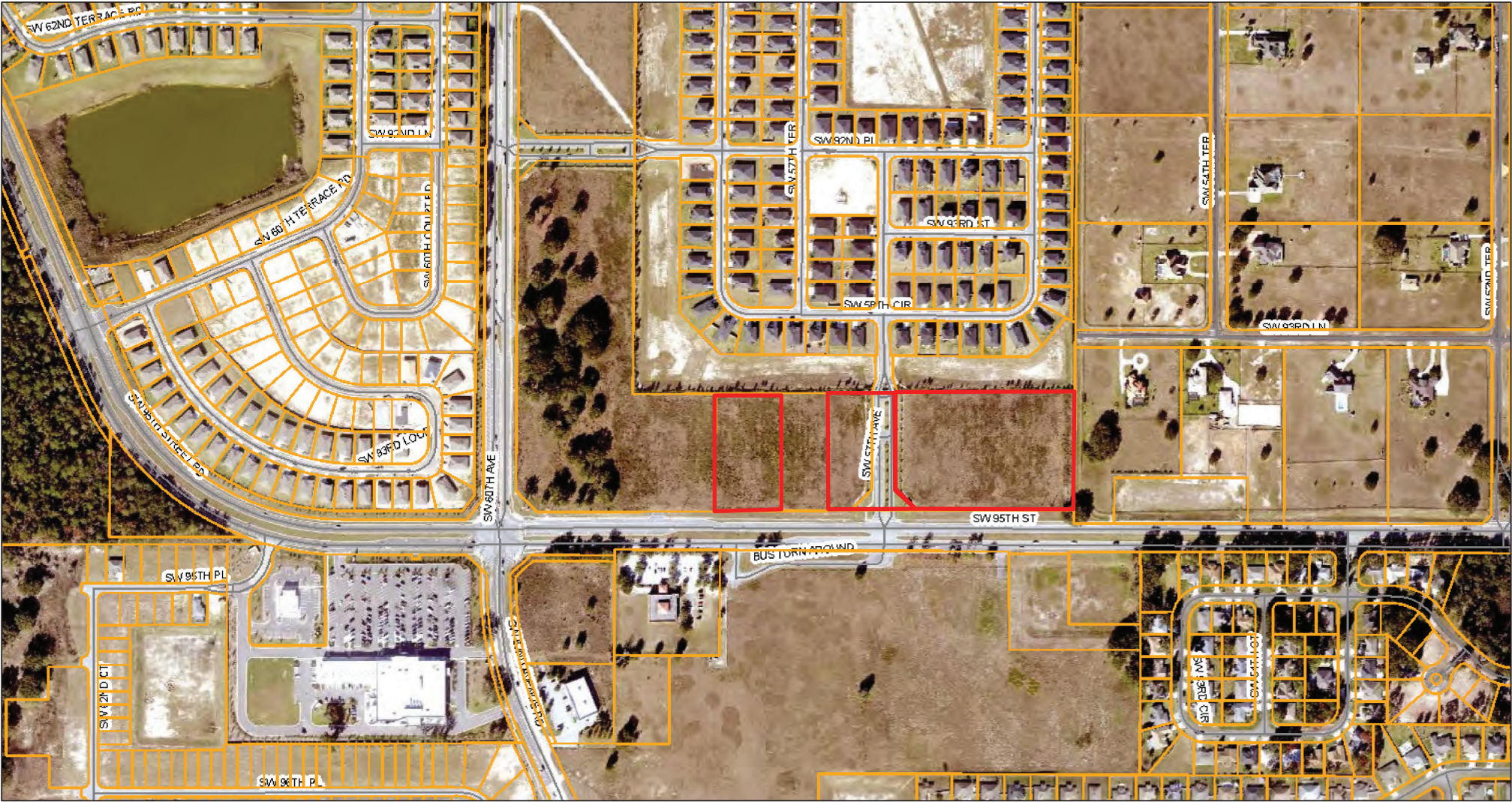
Section & Title of Code (be specific): \_\_\_\_\_ AR # 32039 2.21.4  
Reason/Justification for Request (be specific): Start clearing & grubbing the property and building of earthpad.

**DEVELOPMENT REVIEW USE:**

Received By: email 8/20/25 Date Processed: 8/20/25 Project # 2024090064 AR # 32039

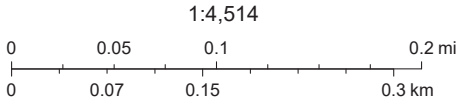
**ZONING USE:** Parcel of record: Yes ☐ No ☐ Eligible to apply for Family Division: Yes ☐ No ☐  
Zoned: \_\_\_\_\_ ESOZ: \_\_\_\_\_ P.O.M. \_\_\_\_\_ Land Use: \_\_\_\_\_ Plat Vacation Required: Yes ☐ No ☐  
Date Reviewed: \_\_\_\_\_ Verified by (print & initial): \_\_\_\_\_

MCBCC Interactive Map - Internal



8/21/2025, 2:28:16 PM

- Parcels
- Streets
- Green: Band\_2
- Marion County
- Aerial 2024
- Blue: Band\_3
- Red: Band\_1



Sources: Esri, TomTom, Garmin, FAO, NOAA, USGS, © OpenStreetMap contributors, and the GIS User Community, Marion County BOCC

## PLAN SHEET INDEX

C0	COVER SHEET	C8	DETAILS (SITE)
C0.1	GENERAL NOTES	C8.1	DETAILS (SITE)
C0.2	GENERAL NOTES	C8.2	DETAILS (FDOT)
C0.3	GENERAL NOTES	C8.3	DETAILS (FDOT)
C1	SITE PLAN OVERALL	C8.4	DETAILS (FDOT)
C1.1	SITE PLAN	C9	DETAILS (GRADING)
C2	DEMO PLAN	C9.1	DETAILS (GRADING)
C3	GRADING PLAN	C9.2	KARST
C4	EROSION CONTROL PLAN	C9.3	DETAILS (PROFILES)
C4.1	EROSION CONTROL DETAILS	C10	DETAILS (UTILITY)
C5	UTILITY PLAN	C10.1	DETAILS (UTILITY)
C6	LANDSCAPE PLAN	C10.2	DETAILS (UTILITY)
C7	IRRIGATION PLAN	C10.3	DETAILS (UTILITY PROFILE)
		1 OF 2	SURVEY
		2 OF 2	SURVEY
		1 OF 1	SITE PHOTOMETRIC LAYOUT

TOTAL SHEETS: 29

## LEGEND:

	NO. OF PARKING SPACES
	DETAIL NO. / SHEET
	HEAVY DUTY ASPHALT PAVEMENT
	PROPOSED CONCRETE SURFACE
	WATER LINE
	ELECTRIC LINE
	WASTEWATER LINE
	BURIED FORCE MAIN
	TELEPHONE LINE
	FIRE HYDRANT
	VALVE
	WATER METER
	BACKFLOW PREVENTER WITH CONCRETE PAD
	TOP OF ASPHALT/CONCRETE SPOT ELEVATION
	TOP OF CURB/SIDEWALK (ON TOP) / BOTTOM OF CURB (ON BOTTOM)
	FLOW ARROW
	REVISION NUMBER
	FIRE DEPARTMENT CONNECTION

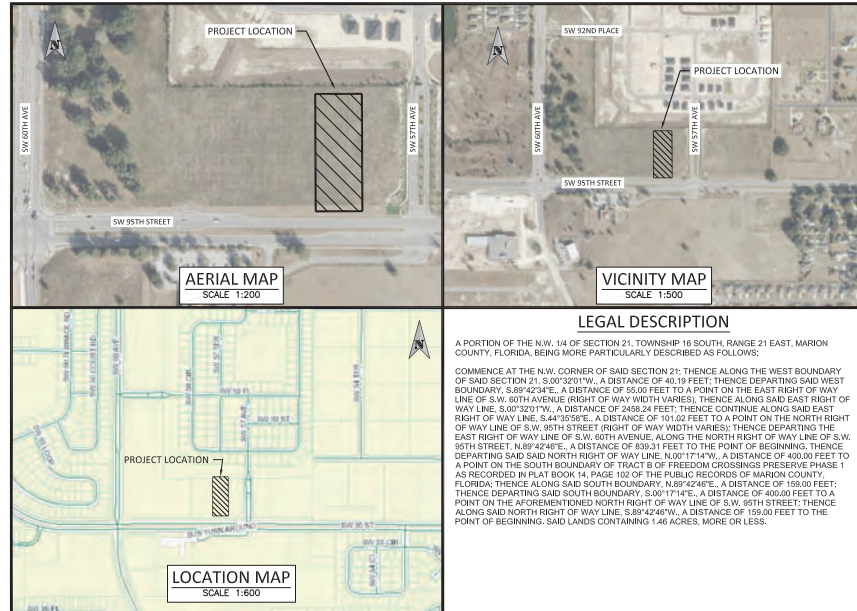
SITE DATA TABLE					
AREAS	EXISTING (SF)	ACRES	PERCENT OF TOTAL PROPERTY AREA	PROPOSED (SF)	ACRES
LOT 10 AREAS FIRESTONE	253,600	5.748	100%	253,600	5.748
TOTAL IMPERVIOUS (80% MAX)	40	0.0	0%	434,868	9.82%
TOTAL PERVIOUS AREA	253,600	5.748	100%	258,734	45.18%
LOT 11 AREAS	253,373	5.745	100%	253,373	5.745
TOTAL IMPERVIOUS (80% MAX)	40	0.0	0%	25,300	9.84%
TOTAL PERVIOUS AREA	253,373	5.745	100%	257,073	90.06%

# MAJOR SITE PLAN BSRO FIRESTONE

STORE #TBD

AT

NWC OF SW 95TH ST & SW 57TH AVE  
OCALA, FL 34476  
MARION COUNTY PARCEL #: 35699-006-06 & 35699-006-04



## LEGAL DESCRIPTION

A PORTION OF THE N.W. 1/4 OF SECTION 21, TOWNSHIP 16 SOUTH, RANGE 21 EAST, MARION COUNTY, FLORIDA, BEING MORE PARTICULARLY DESCRIBED AS FOLLOWS:  
COMMENCE AT THE N.W. CORNER OF SAID SECTION 21; THENCE ALONG THE WEST BOUNDARY OF SAID SECTION 21, 5.00'32.01"N, A DISTANCE OF 43.19 FEET; THENCE DEPARTING SAID WEST BOUNDARY, S.89°42'34"E, A DISTANCE OF 55.00 FEET TO A POINT ON THE EAST RIGHT OF WAY LINE OF S.W. 90TH AVENUE (RIGHT OF WAY WIDTH VARIES); THENCE ALONG SAID EAST RIGHT OF WAY LINE, S.00°32'01"W, A DISTANCE OF 2465.24 FEET; THENCE CONTINUE ALONG SAID EAST RIGHT OF WAY LINE, S.44°35'59"E, A DISTANCE OF 101.02 FEET TO A POINT ON THE NORTH RIGHT OF WAY LINE OF S.W. 95TH STREET (RIGHT OF WAY WIDTH VARIES); THENCE DEPARTING THE EAST RIGHT OF WAY LINE OF S.W. 90TH AVENUE, ALONG THE NORTH RIGHT OF WAY LINE OF S.W. 95TH STREET, N.89°42'48"E, A DISTANCE OF 439.31 FEET TO THE POINT OF BEGINNING; THENCE DEPARTING SAID NORTH RIGHT OF WAY LINE, N.00°17'14"W, A DISTANCE OF 400.00 FEET TO A POINT ON THE SOUTH BOUNDARY OF TRACT B OF FREEDOM CROSSINGS PRESERVE PHASE 1 AS RECORDED IN PLAT BOOK 14, PAGE 102 OF THE PUBLIC RECORDS OF MARION COUNTY, FLORIDA; THENCE ALONG SAID SOUTH BOUNDARY, N.89°42'48"E, A DISTANCE OF 159.00 FEET; THENCE DEPARTING SAID SOUTH BOUNDARY, S.00°17'14"E, A DISTANCE OF 400.00 FEET TO A POINT ON THE AFOREMENTIONED NORTH RIGHT OF WAY LINE OF S.W. 95TH STREET; THENCE ALONG SAID NORTH RIGHT OF WAY LINE, S.89°42'48"W, A DISTANCE OF 159.00 FEET TO THE POINT OF BEGINNING; SAID LANDS CONTAINING 1.46 ACRES, MORE OR LESS.

## GENERAL REVISION LOG

NO.	DATE	REVISION / ISSUE:	SHEETS REVISED:	BY:
1	11/01/2024	MARION COUNTY COMMENTS	C0, C1, C1.1, C3, C4, C5, C6, C7, C8, C9, C10, C10.1, C10.2, C10.3, C10.4, C10.5, C10.6, C10.7, C10.8, C10.9, C10.10, C10.11, C10.12, C10.13, C10.14, C10.15, C10.16, C10.17, C10.18, C10.19, C10.20, C10.21, C10.22, C10.23, C10.24, C10.25, C10.26, C10.27, C10.28, C10.29, C10.30, C10.31, C10.32, C10.33, C10.34, C10.35, C10.36, C10.37, C10.38, C10.39, C10.40, C10.41, C10.42, C10.43, C10.44, C10.45, C10.46, C10.47, C10.48, C10.49, C10.50, C10.51, C10.52, C10.53, C10.54, C10.55, C10.56, C10.57, C10.58, C10.59, C10.60, C10.61, C10.62, C10.63, C10.64, C10.65, C10.66, C10.67, C10.68, C10.69, C10.70, C10.71, C10.72, C10.73, C10.74, C10.75, C10.76, C10.77, C10.78, C10.79, C10.80, C10.81, C10.82, C10.83, C10.84, C10.85, C10.86, C10.87, C10.88, C10.89, C10.90, C10.91, C10.92, C10.93, C10.94, C10.95, C10.96, C10.97, C10.98, C10.99, C11, C11.1, C11.2, C11.3, C11.4, C11.5, C11.6, C11.7, C11.8, C11.9, C11.10, C11.11, C11.12, C11.13, C11.14, C11.15, C11.16, C11.17, C11.18, C11.19, C11.20, C11.21, C11.22, C11.23, C11.24, C11.25, C11.26, C11.27, C11.28, C11.29, C11.30, C11.31, C11.32, C11.33, C11.34, C11.35, C11.36, C11.37, C11.38, C11.39, C11.40, C11.41, C11.42, C11.43, C11.44, C11.45, C11.46, C11.47, C11.48, C11.49, C11.50, C11.51, C11.52, C11.53, C11.54, C11.55, C11.56, C11.57, C11.58, C11.59, C11.60, C11.61, C11.62, C11.63, C11.64, C11.65, C11.66, C11.67, C11.68, C11.69, C11.70, C11.71, C11.72, C11.73, C11.74, C11.75, C11.76, C11.77, C11.78, C11.79, C11.80, C11.81, C11.82, C11.83, C11.84, C11.85, C11.86, C11.87, C11.88, C11.89, C11.90, C11.91, C11.92, C11.93, C11.94, C11.95, C11.96, C11.97, C11.98, C11.99, C12, C12.1, C12.2, C12.3, C12.4, C12.5, C12.6, C12.7, C12.8, C12.9, C12.10, C12.11, C12.12, C12.13, C12.14, C12.15, C12.16, C12.17, C12.18, C12.19, C12.20, C12.21, C12.22, C12.23, C12.24, C12.25, C12.26, C12.27, C12.28, C12.29, C12.30, C12.31, C12.32, C12.33, C12.34, C12.35, C12.36, C12.37, C12.38, C12.39, C12.40, C12.41, C12.42, C12.43, C12.44, C12.45, C12.46, C12.47, C12.48, C12.49, C12.50, C12.51, C12.52, C12.53, C12.54, C12.55, C12.56, C12.57, C12.58, C12.59, C12.60, C12.61, C12.62, C12.63, C12.64, C12.65, C12.66, C12.67, C12.68, C12.69, C12.70, C12.71, C12.72, C12.73, C12.74, C12.75, C12.76, C12.77, C12.78, C12.79, C12.80, C12.81, C12.82, C12.83, C12.84, C12.85, C12.86, C12.87, C12.88, C12.89, C12.90, C12.91, C12.92, C12.93, C12.94, C12.95, C12.96, C12.97, C12.98, C12.99, C13, C13.1, C13.2, C13.3, C13.4, C13.5, C13.6, C13.7, C13.8, C13.9, C13.10, C13.11, C13.12, C13.13, C13.14, C13.15, C13.16, C13.17, C13.18, C13.19, C13.20, C13.21, C13.22, C13.23, C13.24, C13.25, C13.26, C13.27, C13.28, C13.29, C13.30, C13.31, C13.32, C13.33, C13.34, C13.35, C13.36, C13.37, C13.38, C13.39, C13.40, C13.41, C13.42, C13.43, C13.44, C13.45, C13.46, C13.47, C13.48, C13.49, C13.50, C13.51, C13.52, C13.53, C13.54, C13.55, C13.56, C13.57, C13.58, C13.59, C13.60, C13.61, C13.62, C13.63, C13.64, C13.65, C13.66, C13.67, C13.68, C13.69, C13.70, C13.71, C13.72, C13.73, C13.74, C13.75, C13.76, C13.77, C13.78, C13.79, C13.80, C13.81, C13.82, C13.83, C13.84, C13.85, C13.86, C13.87, C13.88, C13.89, C13.90, C13.91, C13.92, C13.93, C13.94, C13.95, C13.96, C13.97, C13.98, C13.99, C14, C14.1, C14.2, C14.3, C14.4, C14.5, C14.6, C14.7, C14.8, C14.9, C14.10, C14.11, C14.12, C14.13, C14.14, C14.15, C14.16, C14.17, C14.18, C14.19, C14.20, C14.21, C14.22, C14.23, C14.24, C14.25, C14.26, C14.27, C14.28, C14.29, C14.30, C14.31, C14.32, C14.33, C14.34, C14.35, C14.36, C14.37, C14.38, C14.39, C14.40, C14.41, C14.42, C14.43, C14.44, C14.45, C14.46, C14.47, C14.48, C14.49, C14.50, C14.51, C14.52, C14.53, C14.54, C14.55, C14.56, C14.57, C14.58, C14.59, C14.60, C14.61, C14.62, C14.63, C14.64, C14.65, C14.66, C14.67, C14.68, C14.69, C14.70, C14.71, C14.72, C14.73, C14.74, C14.75, C14.76, C14.77, C14.78, C14.79, C14.80, C14.81, C14.82, C14.83, C14.84, C14.85, C14.86, C14.87, C14.88, C14.89, C14.90, C14.91, C14.92, C14.93, C14.94, C14.95, C14.96, C14.97, C14.98, C14.99, C15, C15.1, C15.2, C15.3, C15.4, C15.5, C15.6, C15.7, C15.8, C15.9, C15.10, C15.11, C15.12, C15.13, C15.14, C15.15, C15.16, C15.17, C15.18, C15.19, C15.20, C15.21, C15.22, C15.23, C15.24, C15.25, C15.26, C15.27, C15.28, C15.29, C15.30, C15.31, C15.32, C15.33, C15.34, C15.35, C15.36, C15.37, C15.38, C15.39, C15.40, C15.41, C15.42, C15.43, C15.44, C15.45, C15.46, C15.47, C15.48, C15.49, C15.50, C15.51, C15.52, C15.53, C15.54, C15.55, C15.56, C15.57, C15.58, C15.59, C15.60, C15.61, C15.62, C15.63, C15.64, C15.65, C15.66, C15.67, C15.68, C15.69, C15.70, C15.71, C15.72, C15.73, C15.74, C15.75, C15.76, C15.77, C15.78, C15.79, C15.80, C15.81, C15.82, C15.83, C15.84, C15.85, C15.86, C15.87, C15.88, C15.89, C15.90, C15.91, C15.92, C15.93, C15.94, C15.95, C15.96, C15.97, C15.98, C15.99, C16, C16.1, C16.2, C16.3, C16.4, C16.5, C16.6, C16.7, C16.8, C16.9, C16.10, C16.11, C16.12, C16.13, C16.14, C16.15, C16.16, C16.17, C16.18, C16.19, C16.20, C16.21, C16.22, C16.23, C16.24, C16.25, C16.26, C16.27, C16.28, C16.29, C16.30, C16.31, C16.32, C16.33, C16.34, C16.35, C16.36, C16.37, C16.38, C16.39, C16.40, C16.41, C16.42, C16.43, C16.44, C16.45, C16.46, C16.47, C16.48, C16.49, C16.50, C16.51, C16.52, C16.53, C16.54, C16.55, C16.56, C16.57, C16.58, C16.59, C16.60, C16.61, C16.62, C16.63, C16.64, C16.65, C16.66, C16.67, C16.68, C16.69, C16.70, C16.71, C16.72, C16.73, C16.74, C16.75, C16.76, C16.77, C16.78, C16.79, C16.80, C16.81, C16.82, C16.83, C16.84, C16.85, C16.86, C16.87, C16.88, C16.89, C16.90, C16.91, C16.92, C16.93, C16.94, C16.95, C16.96, C16.97, C16.98, C16.99, C17, C17.1, C17.2, C17.3, C17.4, C17.5, C17.6, C17.7, C17.8, C17.9, C17.10, C17.11, C17.12, C17.13, C17.14, C17.15, C17.16, C17.17, C17.18, C17.19, C17.20, C17.21, C17.22, C17.23, C17.24, C17.25, C17.26, C17.27, C17.28, C17.29, C17.30, C17.31, C17.32, C17.33, C17.34, C17.35, C17.36, C17.37, C17.38, C17.39, C17.40, C17.41, C17.42, C17.43, C17.44, C17.45, C17.46, C17.47, C17.48, C17.49, C17.50, C17.51, C17.52, C17.53, C17.54, C17.55, C17.56, C17.57, C17.58, C17.59, C17.60, C17.61, C17.62, C17.63, C17.64, C17.65, C17.66, C17.67, C17.68, C17.69, C17.70, C17.71, C17.72, C17.73, C17.74, C17.75, C17.76, C17.77, C17.78, C17.79, C17.80, C17.81, C17.82, C17.83, C17.84, C17.85, C17.86, C17.87, C17.88, C17.89, C17.90, C17.91, C17.92, C17.93, C17.94, C17.95, C17.96, C17.97, C17.98, C17.99, C18, C18.1, C18.2, C18.3, C18.4, C18.5, C18.6, C18.7, C18.8, C18.9, C18.10, C18.11, C18.12, C18.13, C18.14, C18.15, C18.16, C18.17, C18.18, C18.19, C18.20, C18.21, C18.22, C18.23, C18.24, C18.25, C18.26, C18.27, C18.28, C18.29, C18.30, C18.31, C18.32, C18.33, C18.34, C18.35, C18.36, C18.37, C18.38, C18.39, C18.40, C18.41, C18.42, C18.43, C18.44, C18.45, C18.46, C18.47, C18.48, C18.49, C18.50, C18.51, C18.52, C18.53, C18.54, C18.55, C18.56, C18.57, C18.58, C18.59, C18.60, C18.61, C18.62, C18.63, C18.64, C18.65, C18.66, C18.67, C18.68, C18.69, C18.70, C18.71, C18.72, C18.73, C18.74, C18.75, C18.76, C18.77, C18.78, C18.79, C18.80, C18.81, C18.82, C18.83, C18.84, C18.85, C18.86, C18.87, C18.88, C18.89, C18.90, C18.91, C18.92, C18.93, C18.94, C18.95, C18.96, C18.97, C18.98, C18.99, C19, C19.1, C19.2, C19.3, C19.4, C19.5, C19.6, C19.7, C19.8, C19.9, C19.10, C19.11, C19.12, C19.13, C19.14, C19.15, C19.16, C19.17, C19.18, C19.19, C19.20, C19.21, C19.22, C19.23, C19.24, C19.25, C19.26, C19.27, C19.28, C19.29, C19.30, C19.31, C19.32, C19.33, C19.34, C19.35, C19.36, C19.37, C19.38, C19.39, C19.40, C19.41, C19.42, C19.43, C19.44, C19.45, C19.46, C19.47, C19.48, C19.49, C19.50, C19.51, C19.52, C19.53, C19.54, C19.55, C19.56, C19.57, C19.58, C19.59, C19.60, C19.61, C19.62, C19.63, C19.64, C19.65, C19.66, C19.67, C19.68, C19.69, C19.70, C19.71, C19.72, C19.73, C19.74, C19.75, C19.76, C19.77, C19.78, C19.79, C19.80, C19.81, C19.82, C19.83, C19.84, C19.85, C19.86, C19.87, C19.88, C19.89, C19.90, C19.91, C19.92, C19.93, C19.94, C19.95, C19.96, C19.97, C19.98, C19.99, C20, C20.1, C20.2, C20.3, C20.4, C20.5, C20.6, C20.7, C20.8, C20.9, C20.10, C20.11, C20.12, C20.13, C20.14, C20.15, C20.16, C20.17, C20.18, C20.19, C20.20, C20.21, C20.22, C20.23, C20.24, C20.25, C20.26, C20.27, C20.28, C20.29, C20.30, C20.31, C20.32, C20.33, C20.34, C20.35, C20.36, C20.37, C20.38, C20.39, C20.40, C20.41, C20.42, C20.43, C20.44, C20.45, C20.46, C20.47, C20.48, C20.49, C20.50, C20.51, C20.52, C20.53, C20.54, C20.55, C20.56, C20.57, C20.58, C20.59, C20.60, C20.61, C20.62, C20.63, C20.64, C20.65, C20.66, C20.67, C20.68, C20.69, C20.70, C20.71, C20.72, C20.73, C20.74, C20.75, C20.76, C20.77, C20.78, C20.79, C20.80, C20.81, C20.82, C20.83, C20.84, C20.85, C20.86, C20.87, C20.88, C20.89, C20.90, C20.91, C20.92, C20.93, C20.94, C20.95, C20.96, C20.97, C20.98, C20.99, C21, C21.1, C21.2, C21.3, C21.4, C21.5, C21.6, C21.7, C21.8, C21.9, C21.10, C21.11, C21.12, C21.13, C21.14, C21.15, C21.16, C21.17, C21.18, C21.19, C21.20, C21.21, C21.22, C21.23, C21.24, C21.25, C21.26, C21.27, C21.28, C21.29, C21.30, C21.31, C21.32, C21.33, C21.34, C21.35, C21.36, C21.37, C21.38, C21.39, C21.40, C21.41, C21.42, C21.43, C21.44, C21.45, C21.46, C21.47, C21.48, C21.49, C21.50, C21.51, C21.52, C21.53, C21.54, C21.55, C21.56, C21.57, C21.58, C21.59, C21.60, C21.61, C21.62, C21.63, C21.64, C21.65, C21.66, C21.67, C21.68, C21.69, C21.70, C21.71, C21.72, C21.73, C21.74, C21.75, C21.76, C21.77, C21.78, C21.79, C21.80, C21.81, C21.82, C21.83, C21.84, C21.85, C21.86, C21.87, C21.88, C21.89, C21.90, C21.91, C21.92, C21.93, C21.94, C21.95, C21.96, C21.97, C21.98, C21.99, C22, C22.1, C22.2, C22.3, C22.4, C22.5, C22.6, C22.7, C22.8, C22.9, C22.10, C22.11, C22.12, C22.13, C22.14, C22.15, C22.16, C22.17, C22.18, C22.19, C22.20, C22.21, C22.22, C22.23, C22.24, C22.25, C22.26, C22.27, C22.28, C22.29, C22.30, C22.31, C22.32, C22.33, C22.34, C22.35, C22.36, C22.37, C22.38, C22.39, C22.40, C22.41, C22.42, C22.43, C22.44, C22.45, C22.46, C22.47, C22.48, C22.49, C22.50, C22.51, C22.52, C22.53, C22.54, C22.55, C22.56, C22.57, C22.58, C22.59, C22.60, C22.61, C22.62, C22.63, C22.64, C22.65, C22.66, C22.67, C22.68, C22.69, C22.70, C22.71, C22.72, C22.73, C22.74, C22.75, C22.76, C22.77, C22.78, C22.79, C22.80, C22.81, C22.82, C22.83, C22.84, C22.85, C22.86, C22.87, C22.88, C22.89, C22.90, C22.91, C22.92, C22.93, C22.94, C22.95, C22.96, C22.97, C22.98, C22.99, C23, C23.1, C23.2, C23.3, C23.4, C23.5, C23.6, C23.7, C23.8, C23.9, C23.10, C23.11, C23.12, C23.13, C23.14, C23.15, C23.16, C23.17, C23.18, C23.19, C23.20, C23.21, C23.22, C23.23, C23.24, C23.25, C23.26, C23.27, C23.28, C23.29, C23.30, C23.31, C23.32, C23.33, C23.34, C23.	

1. CONTRACTOR IS RESPONSIBLE FOR COMPLIANCE WITH THE NOTES AND SPECIFICATIONS CONTAINED HEREIN. THESE NOTES SHALL APPLY TO ALL WORK IN THIS SET OF CONSTRUCTION DOCUMENTS. CONTRACTOR SHALL BE RESPONSIBLE TO ENSURE CONFORMANCE TO THESE REQUIREMENTS BY ALL SUBCONTRACTORS.

2. LOCATIONS, ELEVATIONS, AND DIMENSIONS OF EXISTING UTILITIES, STRUCTURES AND OTHER FEATURES ARE SHOWN ACCORDING TO THE BEST INFORMATION AVAILABLE AT THE TIME OF PREPARATION OF THESE PLANS. THE CONTRACTOR SHALL VERIFY THE LOCATIONS, ELEVATIONS, AND DIMENSIONS OF ALL EXISTING UTILITIES, STRUCTURES AND OTHER FEATURES PRIOR TO CONSTRUCTION. ANY DISCREPANCIES, DISCREPANCIES OR AMBIGUITIES MUST BE REPORTED TO THE ENGINEER IMMEDIATELY. A COST FOR CONSTRUCTION CONTRACTOR MUST NOTIFY ENGINEER AND OWNER, IN WRITING, IF ANY CONFLICTS, DISCREPANCIES, OR AMBIGUITIES EXIST PRIOR TO PROCEEDING WITH CONSTRUCTION. NO EXTRA COMPENSATION WILL BE PAID TO THE CONTRACTOR FOR WORK WHICH HAS TO BE REDONE OR REPAIRED DUE TO DIMENSIONS OR GRADES SHOWN INCORRECTLY ON THESE PLANS PRIOR TO CONTRACTOR GIVING ENGINEER AND OWNER WRITTEN NOTIFICATION OF SAME AND ENGINEER AND OWNER, THEREAFTER, PROVIDING CONTRACTOR WITH WRITTEN AUTHORIZATION TO PROCEED WITH SUCH ADDITIONAL WORK.

3. IF IT IS THE CONTRACTOR'S RESPONSIBILITY TO BECOME FAMILIAR WITH THE PERMIT NOTIFICATION AND CERTIFICATION REQUIREMENTS SPECIFIED BY THE VARIOUS GOVERNMENTAL AGENCIES AND THE ENGINEER, THE CONTRACTOR SHALL OBTAIN ALL NECESSARY PERMITS PRIOR TO CONSTRUCTION, AND SOBEADILY INSTRUCTIONS ACCORDING TO AGENCY INSTRUCTIONS/REQUIREMENTS.

4. PRIOR TO THE START OF CONSTRUCTION, THE CONTRACTOR MUST COORDINATE THE BUILDING LAYOUT BY CAREFUL REVIEW OF THE ENTIRE SITE PLAN AND THE LATEST ARCHITECTURAL PLANS (INCLUDING, BUT NOT LIMITED TO, STRUCTURAL, MECHANICAL, ELECTRICAL, PLUMBING AND FIRE SUPPRESSION PLAN, WHERE APPLICABLE). CONTRACTOR MUST IMMEDIATELY NOTIFY OWNER, ARCHITECT AND SITE ENGINEER, IN WRITING, OF ANY CONFLICTS, DISCREPANCIES OR AMBIGUITIES WHICH EXIST.

5. NO EXTRA PAYMENT WILL BE ALLOWED FOR ANY WORK REQUIRED DUE TO MISUNDERSTANDING OF JOB OR SITE CONDITIONS AFFECTING THE WORK AS DESCRIBED IN THE SPECIFICATIONS OR SHOWN ON THE DRAWINGS. THE CONTRACTOR SHALL NOT TAKE ADVANTAGE OF ANY APPARENT ERROR OR OMISSIONS IN THE DRAWINGS OR SPECIFICATIONS, AND THE ENGINEER SHALL BE PERMITTED TO MAKE CORRECTIONS AND INTERPRETATIONS AS MAY BE DEEMED NECESSARY FOR THE FULFILLMENT OF THE INTENT ON THE CONTRACT DOCUMENTS. THE TENDERING OF A PROPOSAL, WILL ACKNOWLEDGE ACCEPTANCE OF THESE CONDITIONS BY THE BIDDERS.

6. THE ENGINEER IS NOT RESPONSIBLE FOR CONSTRUCTION METHODS, MEANS, TECHNIQUES OR PROCEDURES, GENERALLY OR FOR THE CONSTRUCTION MEANS, METHODS, TECHNIQUES OR PROCEDURES FOR COMPLETION OF THE WORK DEPICTED BOTH ON THESE PLANS, AND FOR ANY CONFLICTS/SOURCE RELATIONS WHICH RESULT FROM SAME. CONTRACTOR IS RESPONSIBLE FOR DETERMINING THE METHODS/MEANS FOR COMPLETION OF THE WORK PRIOR TO THE COMMENCEMENT OF CONSTRUCTION.

7. THE GEOLOGICAL REPORT AND RECOMMENDATIONS SET FORTH HEREIN ARE A PART OF THE REQUIRED CONSTRUCTION DOCUMENTS AND, IN CASE OF CONFLICT, DISCREPANCY OR AMBIGUITY, THE MORE STRINGENT REQUIREMENTS AND RECOMMENDATIONS CONTAINED IN THE PLANS AND THE GEOLOGICAL REPORT AND RECOMMENDATIONS SHALL TAKE PRECEDENCE. UNLESS SPECIFICALLY NOTED OTHERWISE ON THE PLANS, THE CONTRACTOR MUST NOTIFY THE ENGINEER, IN WRITING, OF ANY SUCH CONFLICT, DISCREPANCY OR AMBIGUITY BETWEEN THE GEOLOGICAL REPORTS AND PLANS AND SPECIFICATIONS PRIOR TO PROCEEDING WITH ANY FURTHER WORK.

8. THE CONTRACTOR SHALL SUBMIT SHOP DRAWINGS ON ALL PRE-CAST AND MANUFACTURED ITEMS TO THE OWNER'S ENGINEER FOR REVIEW, PRIOR TO ORDERING, FACTORY TO SUBMIT FOR REVIEW BEFORE INSTALLATION MAY RESULT IN REMOVAL AND REPLACEMENT AT THE CONTRACTORS EXPENSE. THE ENGINEER SHALL REVIEW OR TAKE OTHER ACTION ON THE CONTRACTOR SUBMITTALS, SUCH AS SHOP DRAWINGS, PRODUCT DATA, SAMPLES AND OTHER DATA, WHICH THE CONTRACTOR IS REQUIRED TO SUBMIT, BUT ONLY FOR THE LIMITED PURPOSE OF CHECKING FOR CONFORMANCE WITH THE DESIGN INTENT AND THE TECHNICAL SPECIFICATIONS. THE CONTRACTOR SHALL BE RESPONSIBLE FOR THE DESIGN OF ALL MANUFACTURED ITEMS, MEANS, TECHNIQUES OR PROCEDURES, COORDINATION OF THE WORK WITH OTHER TRADES, AND CONSTRUCTION SAFETY PRECAUTIONS ARE THE SOLE RESPONSIBILITY OF THE CONTRACTOR AND COMMON COW ENGINEERING HAS NO RESPONSIBILITY OR LIABILITY FOR SAME. HEREINAFTER, THE SHOP DRAWING REVIEW WILL BE CONDUCTED WITH REASONABLE PROMPTNESS WHILE ALLOWING SUFFICIENT TIME TO PERMIT ADEQUATE REVIEW, REVIEW OF A SPECIFIC ITEM MUST NOT INDICATE THAT COMMON COW ENGINEERING HAS REVIEWED THE ENTIRE ASSEMBLY OF WHICH THE ITEM IS A COMPONENT, COMMON COW ENGINEERING SHALL NOT BE RESPONSIBLE FOR THE DESIGN OF ANY MANUFACTURED ITEMS, MEANS, TECHNIQUES OR PROCEDURES BROUGHT TO THE ATTENTION, IN WRITING, BY THE CONTRACTOR. COMMON COW ENGINEERING WILL NOT BE REQUIRED TO REVIEW PARTIAL SUBMISSIONS OR THOSE FOR WHICH MISUNDERSTANDING OF CORRELATED ITEMS HAVE NOT BEEN RECEIVED.

9. NEITHER THE PROFESSIONAL ACTIVITIES OF OWNERS ENGINEER NOR THE PRESENCE OF AND/OR ITS RELATED ENTITIES AT A CONSTRUCTION PROJECT SITE, SHALL RELIEVE THE GENERAL CONTRACTOR OF ITS OBLIGATIONS, DUTIES AND RESPONSIBILITIES INCLUDING, BUT NOT LIMITED TO, CONSTRUCTION MEANS, METHODS, SEQUENCE, TECHNIQUES OR PROCEDURES NECESSARY FOR PERFORMING, OVERSEEING, SUPERINTENDING AND COORDINATING THE WORK IN ACCORDANCE WITH THE PROJECT DOCUMENTS AND COMPLIANCE WITH ANY HEALTH OR SAFETY PRECAUTIONS OF HIGHER PRIORITY THAN ANY REGULATORY AGENCIES WITH JURISDICTION OVER THE PROJECT AND/OR PROPERTY. THE OWNERS ENGINEER AND ITS PERSONNEL, HAVE NO AUTHORITY TO EXERCISE ANY CONTROL OVER ANY CONSTRUCTION PROJECT EMPLOYEES IN CONNECTION WITH THEIR WORK OR ANY HEALTH OR SAFETY PROGRAMS OR PROCEDURES. THE GENERAL CONTRACTOR IS SOLELY RESPONSIBLE FOR JOB SITE SAFETY.

10. ALL CONTRACTORS MUST CARRY THE SPECIFIED STATUTORY WORKERS COMPENSATION INSURANCE, EMPLOYERS LIABILITY INSURANCE AND LIMITS OF COMMERCIAL GENERAL LIABILITY INSURANCE. ALL CONTRACTORS MUST HAVE THEIR POLICIES ENDORSED TO NAME COMMON COW ENGINEERING AND ITS SUB-CONTRACTORS AS ADDITIONAL NAMED INSURED AND TO PROVIDE CONTRACTUAL LIABILITY COVERAGE SUFFICIENT TO INSURE THIS HOLD HARMLESS AND INDEMNITY OBLIGATIONS ASSUMED BY THE CONTRACTORS. ALL CONTRACTORS MUST COMMON COW ENGINEERING WITH CONTRACTORS OF INSURANCE AS EVIDENCE OF THE REQUIRED INSURANCE PRIOR TO COMMENCING WORK AND UPON RESUMING OF EACH POLICY DURING THE ENTIRE PERIOD OF CONSTRUCTION. IN ADDITION, ALL CONTRACTORS WILL, TO THE FULLEST EXTENT PERMITTED BY LAW, INDEMNIFY AND HOLD HARMLESS COMMON COW AND/OR ANY SUB-CONTRACTOR FROM AND AGAINST ALL SUCH DAMAGES AND COSTS, INCLUDING ATTORNEY'S FEES, INCURRED BY ATTORNEYS FEES AND DEFENSE COSTS, ARISING OUT OF OR IN ANY WORK CONNECTED WITH THE PROJECT, INCLUDING ALL CLAIMS BY EMPLOYEES OF THE CONTRACTORS.

11. ALL UTILITY SERVICE SUB-UTS (WATER, SANITARY SEWER, ETC.) ARE TO BE INSTALLED TO WITHIN 3' OF BUILDINGS(UNLESS OTHERWISE NOTED ON PLANS).

12. THE CONTRACTOR SHALL EXERCISE EXTREME CAUTION IN AREAS OF BURIED UTILITIES AND SHALL CALL "SUNSHINE" AT 1-800-422-4770, AT LEAST 48 HOURS PRIOR TO CONSTRUCTION, TO AVOID DAMAGE TO FIELD LOCATIONS OF BURIED UTILITIES.

13. CONTRACTOR TO COORDINATE WITH THE APPLICABLE ELECTRIC UTILITY SUPPLIER REGARDING ANY NECESSARY RELOCATIONS( ) OF UNDERGROUND AND/OR OVERHEAD ELECTRIC FACILITIES, AND FOR THE LOCATION AND INSTALLATION OF TRANSFORMER PAD(S) AND ASSOCIATED ELECTRIC FACILITIES.

14. FLORIDA STATUTES REQUIRE THAT THE COMPANY PERFORMING THE EXCAVATION WORK SHALL NOTIFY ALL GAS UTILITIES A MINIMUM OF TWO (2) A MAXIMUM OF FIVE (5) WORKING DAYS PRIOR TO EXCAVATING. DURING THE APPROXIMATE LOCATION OF GAS MAINS IF ANY ARE PRESENT, AND DO NOT SHOW SERVICE LINES. THE ONLY SAFE AND PROPER WAY TO LOCATE OTHER MAINS OR SERVICE LINES IS BY AN ON-SITE INSPECTION BY A GAS SYSTEM PROFESSIONAL. THEREFORE, THE COMPANY PERFORMING THE EXCAVATION WORK IS RESTRICTED TO CALL SUNSHINE ONE CALL AT 1-800-422-4770 AT LEAST TWO (2) A MAXIMUM OF FIVE (5) WORKING DAYS BEFORE DIGGING THE CONSTRUCTION AREA. NO MACHINE EXCAVATION SHALL BE PERFORMED WITHIN FIVE FEET OF A GAS MAIN WITHOUT THE UTILITY OWNERS PRESENCE. WORKING DAYS EXCLUDE SATURDAYS, SUNDAYS & LEGAL HOLIDAYS. PERMIT MUST BE OBTAINED FOR AT LEAST 3 BUSINESS DAYS PRIOR TO CONSTRUCTION DATE.

15. THE ENGINEER OF RECORD, DESIGN ENGINEER OR OWNERS ENGINEER HAS NO CONTRACTUAL, LEGAL, OR OTHER RESPONSIBILITY FOR JOB SITE SAFETY OR JOB SITE SUPERVISION, OR ANYTHING RELATED TO SAME. BELOW ARE SAFETY GUIDELINES AND ARE NOT ALL ENCOMPASSING.

A. DURING THE CONSTRUCTION OF DEMOLITION OF THIS PROJECT, ALL SAFETY REGULATIONS ARE TO BE ENFORCED. THE CONTRACTOR OR HIS REPRESENTATIVE SHALL BE RESPONSIBLE FOR THE CONTROL AND SAFETY OF THE TRAVELING PUBLIC AND THE SAFETY OF HIGHWAY PASSENGERS. B. LOCAL SAFETY REGULATIONS SHALL CONFORM TO THE PROVISIONS SET FORTH BY OHSA IN THE FEDERAL REGISTER OF THE DEPARTMENT OF TRANSPORTATION.

C. THE STREET AND HIGHWAY CONSTRUCTION SHALL BE FORTH IN THE CURRENT EDITION OF THE "STATE OF FLORIDA MANUAL ON TRAFFIC CONTROL AND SAFE PRACTICES FOR STREET AND HIGHWAY CONSTRUCTION, MAINTENANCE AND UTILITY OPERATIONS" SHALL BE FOLLOWED IN THE DESIGN, APPLICATION, INSTALLATION, MAINTENANCE AND REMOVAL OF ALL TRAFFIC CONTROL DEVICES, WARNING DEVICES AND BARRIERS NECESSARY TO PROTECT THE PUBLIC AND CONSTRUCTION PERSONNEL FROM HAZARDS WITHIN THE PROJECT LIMITS.

D. ALL TRAFFIC CONTROL MARKINGS AND DEVICES SHALL CONFORM TO THE PROVISIONS SET FORTH IN THE MANUAL ON UNIFORM TRAFFIC CONTROL DEVICES PREPARED BY THE U.S. DEPARTMENT OF TRANSPORTATION FEDERAL HIGHWAY ADMINISTRATION.

E. ALL SUBSURFACE CONSTRUCTION SHALL COMPLY WITH THE "TRENCH SAFETY ACT". THE CONTRACTOR SHALL INSURE THAT THE METHOD OF TRENCH PROTECTION AND CONSTRUCTION IS IN COMPLIANCE WITH THE OCCUPATIONAL SAFETY AND HEALTH ADMINISTRATION (OSHA) REGULATIONS.

F. IT SHALL BE THE SOLE RESPONSIBILITY OF THE CONTRACTOR TO COMPLY WITH AND ENFORCE ALL APPLICABLE SAFETY REGULATIONS. THE ABOVE INFORMATION HAS BEEN PROVIDED FOR THE CONTRACTORS INFORMATION ONLY AND DOES NOT IMPLY THAT THE OWNER OR ENGINEER WILL INSPECT AND/OR ENFORCE SAFETY REGULATIONS. THE CONTRACTOR SHALL BE RESPONSIBLE FOR THE SAFETY OF THE WORK. THE ENGINEER HAS NOT BEEN RETAINED TO PERFORM OR BE RESPONSIBLE FOR JOB SITE SAFETY. SAME WHICH WHOLLY OUTSIDE OF ENGINEER'S SERVICES AS RELATED TO THE PROJECT. THE ENGINEER OF RECORD IS NOT RESPONSIBLE TO IDENTIFY OR REPORT ANY JOB SITE SAFETY ISSUES, AT ANY TIME.

G. IT SHALL BE THE RESPONSIBILITY OF THE CONTRACTOR TO OBTAIN A RIGHT OF WAY UTILIZATION PERMIT "ROW PERMIT" IF REQUIRED FOR CONSTRUCTION OF THE PROPOSED UTILITY INSTALLATION. THIS PERMIT MUST BE OBTAINED BY A DULY LICENSED PLANNING/UTILITY CONTRACTOR (OR CLASS A GENERAL CONTRACTOR) PRIOR TO THE START OF CONSTRUCTION. THESE PLANS AND ANY SUBSEQUENT REVISIONS TO THESE PLANS THAT ARE ISSUED BY THE ENGINEER WILL BE SUBJECT TO THE APPROVAL CONDITIONS OF THIS PERMIT.

H. THE GRAPHIC INFORMATION DEPICTED ON THESE PLANS HAS BEEN COMPILED TO PROPORTION BY SCALE AS ACCURATELY AS POSSIBLE. HOWEVER, DUE TO REPRODUCTIVE DISTORTION, REDUCTION, AND/OR REVISIONS, INFORMATION CONTAINED HEREIN IS NOT INTENDED TO BE SCALED FOR CONSTRUCTION PURPOSES.

I. WHEN DETAILS ARE PROVIDED, CONTRACTOR SHALL CONSTRUCT JOB PER SPECIFIC DETAILS AND NOT BY SCALING FROM THESE PLANS.

19. THIS SET OF PLANS MAY CONTAIN DRAWINGS PREPARED BY OTHER PROFESSIONALS, WHICH CONTAIN THE NAME, ADDRESS, AND LOGO OF THE PROFESSIONAL, COMMON COW ENGINEERING, LLC IS NOT RESPONSIBLE FOR DRAWINGS PREPARED BY OTHER PROFESSIONALS.

20. ALL SPECIFICATIONS AND DOCUMENTS REFERENCED HEREIN SHALL BE OF THE LATEST EDITIONS OF THESE PUBLICATIONS.

21. ALL UNDERGROUND UTILITIES MUST BE IN PLACE, TESTED AND INSPECTED PRIOR TO BASE AND SURFACE CONSTRUCTION.

22. WORK PERFORMED UNDER THESE PLANS SHALL INTERFACE SMOOTHLY WITH ANY OTHER WORK BEING PERFORMED ON-SITE BY OTHER CONTRACTORS/SUBCONTRACTORS AND UTILITY COMPANIES. IT WILL BE NECESSARY FOR THE GENERAL CONTRACTOR TO COORDINATE AND SCHEDULE ITS ACTIVITIES ACCORDINGLY. THE CONTRACTOR SHALL PLAN AND SCHEDULE THE SEQUENCE OF WORK IN ORDER TO PREVENT UNNECESSARY DELAYS OR COSTS ASSOCIATED WITH CRITICAL PATH ITEMS OF THE WORK. IT IS RECOMMENDED THAT A TIME SCHEDULE SHALL BE GIVEN TO THE OWNER, THE OWNERS ENGINEER AND ARCHITECT. THE CONTRACTOR AND SUB-CONTRACTORS WILL BE RESPONSIBLE FOR ALL COSTS ASSOCIATED WITH DELAYS RELATED TO PRIOR SCHEDULE PLANNING.

23. ALL AREAS AFFECTED BY THIS WORK SHALL BE RESTORED TO A CONDITION EQUAL TO OR BETTER THAN THE EXISTING CONDITION, UNLESS SPECIFICALLY EXEMPTED BY THE PLANS. THE COST FOR SUCH RESTORATION SHALL BE INCIDENTAL TO OTHER CONSTRUCTION AND NO ADDITIONAL COMPENSATION SHALL BE ALLOWED.

24. ANY DAMAGE TO EXISTING FACILITIES, ABOVE OR BELOW GROUND, THAT MAY OCCUR AS A RESULT OF THE WORK PERFORMED, BY THE CONTRACTOR OR SUBCONTRACTORS, SHALL BE REPAIRED. NO ADDITIONAL COMPENSATION SHALL BE ALLOWED.

25. THE CONTRACTOR SHALL REMAIN SOLELY RESPONSIBLE FOR ANY DESIGN CHANGES WHICH HE MAY INCORPORATE INTO THE PLANS WITHOUT PRIOR WRITTEN CONSENT AND/OR APPROVAL FROM THE OWNER AND ENGINEER.

26. ENGINEER IS NOT RESPONSIBLE FOR ANY INJURY OR DAMAGES RESULTING FROM CONTRACTORS FAILURE TO BUILD OR CONSTRUCT IN STRICT ACCORDANCE WITH THE APPROVED PLANS. CONTRACTOR SHALL BE RESPONSIBLE FOR ANY INJURY OR DAMAGES RESULTING FROM APPROVED PLANS. THEY AGREE TO JOINTLY AND SEVERALLY INDEMNIFY AND HOLD ENGINEER HARMLESS FOR ALL INJURIES AND DAMAGES THAT ENGINEER SUFFERS AND COSTS THAT THE ENGINEER INCURS.

27. OWNER MUST MAINTAIN AND PRESERVE ALL PHYSICAL, SITE FEATURES AND DESIGN FEATURES DEPICTED ON THE PLANS AND RELATED DOCUMENTS. CONTRACTOR SHALL BE RESPONSIBLE FOR ANY INJURY OR DAMAGES RESULTING FROM APPROVED PLANS. THEY AGREE TO JOINTLY AND SEVERALLY INDEMNIFY AND HOLD ENGINEER HARMLESS FOR ALL INJURIES AND DAMAGES THAT ENGINEER SUFFERS AND COSTS THAT THE ENGINEER INCURS.

28. OWNER MUST MAINTAIN AND PRESERVE ALL PHYSICAL, SITE FEATURES AND DESIGN FEATURES DEPICTED ON THE PLANS AND RELATED DOCUMENTS. CONTRACTOR SHALL BE RESPONSIBLE FOR ANY INJURY OR DAMAGES RESULTING FROM APPROVED PLANS. THEY AGREE TO JOINTLY AND SEVERALLY INDEMNIFY AND HOLD ENGINEER HARMLESS FOR ALL INJURIES AND DAMAGES THAT ENGINEER SUFFERS AND COSTS THAT THE ENGINEER INCURS.

29. AS CONTAINED IN THESE DRAWINGS AND ASSOCIATED APPLICATION DOCUMENTS PREPARED BY THE SIGNATORY PROFESSIONAL ENGINEER, THE USE OF THE WORDS CERTIFY OR CERTIFICATION CONSTITUTES AN EXPRESSION OF PROFESSIONAL OPINION REGARDING THE INFORMATION WHICH IS THE SUBJECT OF THE CERTIFICATION. THE ENGINEER OF RECORD, DESIGN ENGINEER OR OWNERS ENGINEER HAS NO CONTRACTUAL, LEGAL, OR OTHER RESPONSIBILITY FOR JOB SITE SAFETY OR JOB SITE SUPERVISION, OR ANYTHING RELATED TO SAME. BELOW ARE SAFETY GUIDELINES AND ARE NOT ALL ENCOMPASSING.

30. UPON THE RECEIPT OF THE "NOTICE TO PROCEED" THE CONTRACTOR SHALL CONTACT THE ENGINEER OF RECORD AND ARRANGE A PRE-CONSTRUCTION CONFERENCE TO INCLUDE ALL INVOLVED GOVERNMENTAL AGENCIES, UTILITY OWNERS, THE OWNER AND THE ENGINEER OF RECORD.

31. ALL UTILITY EASEMENTS SHALL BE SECURED PRIOR TO CONSTRUCTION (IF REQUIRED) OR IF ALLOWED PRIOR TO CERTIFICATE OF OCCUPANCY, THESE EASEMENTS SHALL BE SKETCHED, DESCRIBED, AND RECORDED AT THE COST OF THE CONTRACTOR.

32. UPON COMPLETION OF CONSTRUCTION, THE CONTRACTOR SHALL FURNISH THE OWNERS ENGINEER WITH COMPLETE "AS-BUILT" INFORMATION, MINIMUM "AS-BUILT" SCOPE HEREIN, CERTIFIED BY A REGISTERED LAND SURVEYOR. NO ENGINEERS CERTIFICATIONS FOR CERTIFICATE OF OCCUPANCY (C.O.) PURPOSES WILL BE MADE UNTIL THIS INFORMATION HAS BEEN RECEIVED AND APPROVED BY THE OWNERS ENGINEER.

33. PROTECT BENCHMARKS, PROPERTY CORNERS, AND OTHER SURVEY MONUMENTS FROM DAMAGE OR DISPLACEMENT. IF MARKER NEEDS TO BE REMOVED, IT SHALL BE REFERENCED BY LICENSED LAND SURVEYOR AND REPLACED AS NECESSARY, BY SAME.

34. AFTER THE COMPLETION OF CONSTRUCTION, THE CONTRACTOR SHALL PERFORM SITE CLEAN UP OPERATION FOR REMOVAL OF ALL TRASH, DEBRIS, EXCESS MATERIAL & EQUIPMENT. IT SHALL BE THE CONTRACTORS RESPONSIBILITY TO PRESENT THE SITE CLEAN & IN GOOD ORDER AT THE TIME OF FINAL ACCEPTANCE.

35. ALL EQUIPMENT SHALL BE HANDLED, STORED, INSTALLED, TESTED & OPERATED IN STRICT ACCORDANCE WITH THE APPLICABLE MANUFACTURERS WRITTEN INSTRUCTIONS.

36. CONTRACTOR IS NEITHER LIABLE NOR RESPONSIBLE FOR ANY SUBSURFACE CONDITIONS AND FURTHER, SHALL HAVE NO LIABILITY FOR ANY HAZARDOUS MATERIALS, HAZARDOUS SUBSTANCES, POLLUTANTS OR ABOUT OR UNDER THE PROJECT SITE.

37. CONSULTANTS MUST EXERCISE APPROPRIATE CARE AND PRECISION IN CONSTRUCTION OF DATA (HANDICAP) ACCESSIBLE COMPONENTS AND ACCESS ROUTES FOR THE SITE. THESE COMPONENTS, AS CONSTRUCTED, MUST COMPLY WITH THE CURRENT LOCAL, CODE REQUIREMENTS, AS WELL AS STATE AND FEDERAL AND THE DEPARTMENT OF JUSTICE ADA STANDARDS AND REGULATIONS BARRIER FREE ACCESS AND ANY MODIFICATIONS, REVISIONS OR UPDATES TO SAME.

38. THE CONTRACTOR SHALL BE RESPONSIBLE FOR THE PROTECTION OF ALL HISTORIC OR PREHISTORIC REMAINS, INCLUDING BUT NOT LIMITED TO, STRUCTURES, REMAINS, OR OTHER HISTORIC REMAINS THAT MAY BE ASSOCIATED WITH NATIVE AMERICAN CULTURES, OR EARLY COLONIAL OR AMERICAN SETTLEMENT ARE ENCOUNTERED AT ANY TIME WITHIN THE PROJECT SITE AREA. THE PERMITTED PROJECT SHALL COMPLY WITH ALL ACTIVITIES INVOLVING SUBSURFACE DISTURBANCE IN THE IMMEDIATE VICINITY OF THE PROJECT SITE. THE CONTRACTOR SHALL BE RESPONSIBLE FOR THE PROTECTION OF ALL HISTORIC OR PREHISTORIC REMAINS, INCLUDING BUT NOT LIMITED TO, STRUCTURES, REMAINS, OR OTHER HISTORIC REMAINS THAT MAY BE ASSOCIATED WITH NATIVE AMERICAN CULTURES, OR EARLY COLONIAL OR AMERICAN SETTLEMENT ARE ENCOUNTERED AT ANY TIME WITHIN THE PROJECT SITE AREA. THE PERMITTED PROJECT SHALL COMPLY WITH ALL ACTIVITIES INVOLVING SUBSURFACE DISTURBANCE IN THE IMMEDIATE VICINITY OF THE PROJECT SITE. THE CONTRACTOR SHALL BE RESPONSIBLE FOR THE PROTECTION OF ALL HISTORIC OR PREHISTORIC REMAINS, INCLUDING BUT NOT LIMITED TO, STRUCTURES, REMAINS, OR OTHER HISTORIC REMAINS THAT MAY BE ASSOCIATED WITH NATIVE AMERICAN CULTURES, OR EARLY COLONIAL OR AMERICAN SETTLEMENT ARE ENCOUNTERED AT ANY TIME WITHIN THE PROJECT SITE AREA. THE PERMITTED PROJECT SHALL COMPLY WITH ALL ACTIVITIES INVOLVING SUBSURFACE DISTURBANCE IN THE IMMEDIATE VICINITY OF THE PROJECT SITE. THE CONTRACTOR SHALL BE RESPONSIBLE FOR THE PROTECTION OF ALL HISTORIC OR PREHISTORIC REMAINS, INCLUDING BUT NOT LIMITED TO, STRUCTURES, REMAINS, OR OTHER HISTORIC REMAINS THAT MAY BE ASSOCIATED WITH NATIVE AMERICAN CULTURES, OR EARLY COLONIAL OR AMERICAN SETTLEMENT ARE ENCOUNTERED AT ANY TIME WITHIN THE PROJECT SITE AREA. THE PERMITTED PROJECT SHALL COMPLY WITH ALL ACTIVITIES INVOLVING SUBSURFACE DISTURBANCE IN THE IMMEDIATE VICINITY OF THE PROJECT SITE. THE CONTRACTOR SHALL BE RESPONSIBLE FOR THE PROTECTION OF ALL HISTORIC OR PREHISTORIC REMAINS, INCLUDING BUT NOT LIMITED TO, STRUCTURES, REMAINS, OR OTHER HISTORIC REMAINS THAT MAY BE ASSOCIATED WITH NATIVE AMERICAN CULTURES, OR EARLY COLONIAL OR AMERICAN SETTLEMENT ARE ENCOUNTERED AT ANY TIME WITHIN THE PROJECT SITE AREA. THE PERMITTED PROJECT SHALL COMPLY WITH ALL ACTIVITIES INVOLVING SUBSURFACE DISTURBANCE IN THE IMMEDIATE VICINITY OF THE PROJECT SITE. THE CONTRACTOR SHALL BE RESPONSIBLE FOR THE PROTECTION OF ALL HISTORIC OR PREHISTORIC REMAINS, INCLUDING BUT NOT LIMITED TO, STRUCTURES, REMAINS, OR OTHER HISTORIC REMAINS THAT MAY BE ASSOCIATED WITH NATIVE AMERICAN CULTURES, OR EARLY COLONIAL OR AMERICAN SETTLEMENT ARE ENCOUNTERED AT ANY TIME WITHIN THE PROJECT SITE AREA. THE PERMITTED PROJECT SHALL COMPLY WITH ALL ACTIVITIES INVOLVING SUBSURFACE DISTURBANCE IN THE IMMEDIATE VICINITY OF THE PROJECT SITE. THE CONTRACTOR SHALL BE RESPONSIBLE FOR THE PROTECTION OF ALL HISTORIC OR PREHISTORIC REMAINS, INCLUDING BUT NOT LIMITED TO, STRUCTURES, REMAINS, OR OTHER HISTORIC REMAINS THAT MAY BE ASSOCIATED WITH NATIVE AMERICAN CULTURES, OR EARLY COLONIAL OR AMERICAN SETTLEMENT ARE ENCOUNTERED AT ANY TIME WITHIN THE PROJECT SITE AREA. THE PERMITTED PROJECT SHALL COMPLY WITH ALL ACTIVITIES INVOLVING SUBSURFACE DISTURBANCE IN THE IMMEDIATE VICINITY OF THE PROJECT SITE. THE CONTRACTOR SHALL BE RESPONSIBLE FOR THE PROTECTION OF ALL HISTORIC OR PREHISTORIC REMAINS, INCLUDING BUT NOT LIMITED TO, STRUCTURES, REMAINS, OR OTHER HISTORIC REMAINS THAT MAY BE ASSOCIATED WITH NATIVE AMERICAN CULTURES, OR EARLY COLONIAL OR AMERICAN SETTLEMENT ARE ENCOUNTERED AT ANY TIME WITHIN THE PROJECT SITE AREA. THE PERMITTED PROJECT SHALL COMPLY WITH ALL ACTIVITIES INVOLVING SUBSURFACE DISTURBANCE IN THE IMMEDIATE VICINITY OF THE PROJECT SITE. THE CONTRACTOR SHALL BE RESPONSIBLE FOR THE PROTECTION OF ALL HISTORIC OR PREHISTORIC REMAINS, INCLUDING BUT NOT LIMITED TO, STRUCTURES, REMAINS, OR OTHER HISTORIC REMAINS THAT MAY BE ASSOCIATED WITH NATIVE AMERICAN CULTURES, OR EARLY COLONIAL OR AMERICAN SETTLEMENT ARE ENCOUNTERED AT ANY TIME WITHIN THE PROJECT SITE AREA. THE PERMITTED PROJECT SHALL COMPLY WITH ALL ACTIVITIES INVOLVING SUBSURFACE DISTURBANCE IN THE IMMEDIATE VICINITY OF THE PROJECT SITE. THE CONTRACTOR SHALL BE RESPONSIBLE FOR THE PROTECTION OF ALL HISTORIC OR PREHISTORIC REMAINS, INCLUDING BUT NOT LIMITED TO, STRUCTURES, REMAINS, OR OTHER HISTORIC REMAINS THAT MAY BE ASSOCIATED WITH NATIVE AMERICAN CULTURES, OR EARLY COLONIAL OR AMERICAN SETTLEMENT ARE ENCOUNTERED AT ANY TIME WITHIN THE PROJECT SITE AREA. THE PERMITTED PROJECT SHALL COMPLY WITH ALL ACTIVITIES INVOLVING SUBSURFACE DISTURBANCE IN THE IMMEDIATE VICINITY OF THE PROJECT SITE. THE CONTRACTOR SHALL BE RESPONSIBLE FOR THE PROTECTION OF ALL HISTORIC OR PREHISTORIC REMAINS, INCLUDING BUT NOT LIMITED TO, STRUCTURES, REMAINS, OR OTHER HISTORIC REMAINS THAT MAY BE ASSOCIATED WITH NATIVE AMERICAN CULTURES, OR EARLY COLONIAL OR AMERICAN SETTLEMENT ARE ENCOUNTERED AT ANY TIME WITHIN THE PROJECT SITE AREA. THE PERMITTED PROJECT SHALL COMPLY WITH ALL ACTIVITIES INVOLVING SUBSURFACE DISTURBANCE IN THE IMMEDIATE VICINITY OF THE PROJECT SITE. THE CONTRACTOR SHALL BE RESPONSIBLE FOR THE PROTECTION OF ALL HISTORIC OR PREHISTORIC REMAINS, INCLUDING BUT NOT LIMITED TO, STRUCTURES, REMAINS, OR OTHER HISTORIC REMAINS THAT MAY BE ASSOCIATED WITH NATIVE AMERICAN CULTURES, OR EARLY COLONIAL OR AMERICAN SETTLEMENT ARE ENCOUNTERED AT ANY TIME WITHIN THE PROJECT SITE AREA. THE PERMITTED PROJECT SHALL COMPLY WITH ALL ACTIVITIES INVOLVING SUBSURFACE DISTURBANCE IN THE IMMEDIATE VICINITY OF THE PROJECT SITE. THE CONTRACTOR SHALL BE RESPONSIBLE FOR THE PROTECTION OF ALL HISTORIC OR PREHISTORIC REMAINS, INCLUDING BUT NOT LIMITED TO, STRUCTURES, REMAINS, OR OTHER HISTORIC REMAINS THAT MAY BE ASSOCIATED WITH NATIVE AMERICAN CULTURES, OR EARLY COLONIAL OR AMERICAN SETTLEMENT ARE ENCOUNTERED AT ANY TIME WITHIN THE PROJECT SITE AREA. THE PERMITTED PROJECT SHALL COMPLY WITH ALL ACTIVITIES INVOLVING SUBSURFACE DISTURBANCE IN THE IMMEDIATE VICINITY OF THE PROJECT SITE. THE CONTRACTOR SHALL BE RESPONSIBLE FOR THE PROTECTION OF ALL HISTORIC OR PREHISTORIC REMAINS, INCLUDING BUT NOT LIMITED TO, STRUCTURES, REMAINS, OR OTHER HISTORIC REMAINS THAT MAY BE ASSOCIATED WITH NATIVE AMERICAN CULTURES, OR EARLY COLONIAL OR AMERICAN SETTLEMENT ARE ENCOUNTERED AT ANY TIME WITHIN THE PROJECT SITE AREA. THE PERMITTED PROJECT SHALL COMPLY WITH ALL ACTIVITIES INVOLVING SUBSURFACE DISTURBANCE IN THE IMMEDIATE VICINITY OF THE PROJECT SITE. THE CONTRACTOR SHALL BE RESPONSIBLE FOR THE PROTECTION OF ALL HISTORIC OR PREHISTORIC REMAINS, INCLUDING BUT NOT LIMITED TO, STRUCTURES, REMAINS, OR OTHER HISTORIC REMAINS THAT MAY BE ASSOCIATED WITH NATIVE AMERICAN CULTURES, OR EARLY COLONIAL OR AMERICAN SETTLEMENT ARE ENCOUNTERED AT ANY TIME WITHIN THE PROJECT SITE AREA. THE PERMITTED PROJECT SHALL COMPLY WITH ALL ACTIVITIES INVOLVING SUBSURFACE DISTURBANCE IN THE IMMEDIATE VICINITY OF THE PROJECT SITE. THE CONTRACTOR SHALL BE RESPONSIBLE FOR THE PROTECTION OF ALL HISTORIC OR PREHISTORIC REMAINS, INCLUDING BUT NOT LIMITED TO, STRUCTURES, REMAINS, OR OTHER HISTORIC REMAINS THAT MAY BE ASSOCIATED WITH NATIVE AMERICAN CULTURES, OR EARLY COLONIAL OR AMERICAN SETTLEMENT ARE ENCOUNTERED AT ANY TIME WITHIN THE PROJECT SITE AREA. THE PERMITTED PROJECT SHALL COMPLY WITH ALL ACTIVITIES INVOLVING SUBSURFACE DISTURBANCE IN THE IMMEDIATE VICINITY OF THE PROJECT SITE. THE CONTRACTOR SHALL BE RESPONSIBLE FOR THE PROTECTION OF ALL HISTORIC OR PREHISTORIC REMAINS, INCLUDING BUT NOT LIMITED TO, STRUCTURES, REMAINS, OR OTHER HISTORIC REMAINS THAT MAY BE ASSOCIATED WITH NATIVE AMERICAN CULTURES, OR EARLY COLONIAL OR AMERICAN SETTLEMENT ARE ENCOUNTERED AT ANY TIME WITHIN THE PROJECT SITE AREA. THE PERMITTED PROJECT SHALL COMPLY WITH ALL ACTIVITIES INVOLVING SUBSURFACE DISTURBANCE IN THE IMMEDIATE VICINITY OF THE PROJECT SITE. THE CONTRACTOR SHALL BE RESPONSIBLE FOR THE PROTECTION OF ALL HISTORIC OR PREHISTORIC REMAINS, INCLUDING BUT NOT LIMITED TO, STRUCTURES, REMAINS, OR OTHER HISTORIC REMAINS THAT MAY BE ASSOCIATED WITH NATIVE AMERICAN CULTURES, OR EARLY COLONIAL OR AMERICAN SETTLEMENT ARE ENCOUNTERED AT ANY TIME WITHIN THE PROJECT SITE AREA. THE PERMITTED PROJECT SHALL COMPLY WITH ALL ACTIVITIES INVOLVING SUBSURFACE DISTURBANCE IN THE IMMEDIATE VICINITY OF THE PROJECT SITE. THE CONTRACTOR SHALL BE RESPONSIBLE FOR THE PROTECTION OF ALL HISTORIC OR PREHISTORIC REMAINS, INCLUDING BUT NOT LIMITED TO, STRUCTURES, REMAINS, OR OTHER HISTORIC REMAINS THAT MAY BE ASSOCIATED WITH NATIVE AMERICAN CULTURES, OR EARLY COLONIAL OR AMERICAN SETTLEMENT ARE ENCOUNTERED AT ANY TIME WITHIN THE PROJECT SITE AREA. THE PERMITTED PROJECT SHALL COMPLY WITH ALL ACTIVITIES INVOLVING SUBSURFACE DISTURBANCE IN THE IMMEDIATE VICINITY OF THE PROJECT SITE. THE CONTRACTOR SHALL BE RESPONSIBLE FOR THE PROTECTION OF ALL HISTORIC OR PREHISTORIC REMAINS, INCLUDING BUT NOT LIMITED TO, STRUCTURES, REMAINS, OR OTHER HISTORIC REMAINS THAT MAY BE ASSOCIATED WITH NATIVE AMERICAN CULTURES, OR EARLY COLONIAL OR AMERICAN SETTLEMENT ARE ENCOUNTERED AT ANY TIME WITHIN THE PROJECT SITE AREA. THE PERMITTED PROJECT SHALL COMPLY WITH ALL ACTIVITIES INVOLVING SUBSURFACE DISTURBANCE IN THE IMMEDIATE VICINITY OF THE PROJECT SITE. THE CONTRACTOR SHALL BE RESPONSIBLE FOR THE PROTECTION OF ALL HISTORIC OR PREHISTORIC REMAINS, INCLUDING BUT NOT LIMITED TO, STRUCTURES, REMAINS, OR OTHER HISTORIC REMAINS THAT MAY BE ASSOCIATED WITH NATIVE AMERICAN CULTURES, OR EARLY COLONIAL OR AMERICAN SETTLEMENT ARE ENCOUNTERED AT ANY TIME WITHIN THE PROJECT SITE AREA. THE PERMITTED PROJECT SHALL COMPLY WITH ALL ACTIVITIES INVOLVING SUBSURFACE DISTURBANCE IN THE IMMEDIATE VICINITY OF THE PROJECT SITE. THE CONTRACTOR SHALL BE RESPONSIBLE FOR THE PROTECTION OF ALL HISTORIC OR PREHISTORIC REMAINS, INCLUDING BUT NOT LIMITED TO, STRUCTURES, REMAINS, OR OTHER HISTORIC REMAINS THAT MAY BE ASSOCIATED WITH NATIVE AMERICAN CULTURES, OR EARLY COLONIAL OR AMERICAN SETTLEMENT ARE ENCOUNTERED AT ANY TIME WITHIN THE PROJECT SITE AREA. THE PERMITTED PROJECT SHALL COMPLY WITH ALL ACTIVITIES INVOLVING SUBSURFACE DISTURBANCE IN THE IMMEDIATE VICINITY OF THE PROJECT SITE. THE CONTRACTOR SHALL BE RESPONSIBLE FOR THE PROTECTION OF ALL HISTORIC OR PREHISTORIC REMAINS, INCLUDING BUT NOT LIMITED TO, STRUCTURES, REMAINS, OR OTHER HISTORIC REMAINS THAT MAY BE ASSOCIATED WITH NATIVE AMERICAN CULTURES, OR EARLY COLONIAL OR AMERICAN SETTLEMENT ARE ENCOUNTERED AT ANY TIME WITHIN THE PROJECT SITE AREA. THE PERMITTED PROJECT SHALL COMPLY WITH ALL ACTIVITIES INVOLVING SUBSURFACE DISTURBANCE IN THE IMMEDIATE VICINITY OF THE PROJECT SITE. THE CONTRACTOR SHALL BE RESPONSIBLE FOR THE PROTECTION OF ALL HISTORIC OR PREHISTORIC REMAINS, INCLUDING BUT NOT LIMITED TO, STRUCTURES, REMAINS, OR OTHER HISTORIC REMAINS THAT MAY BE ASSOCIATED WITH NATIVE AMERICAN CULTURES, OR EARLY COLONIAL OR AMERICAN SETTLEMENT ARE ENCOUNTERED AT ANY TIME WITHIN THE PROJECT SITE AREA. THE PERMITTED PROJECT SHALL COMPLY WITH ALL ACTIVITIES INVOLVING SUBSURFACE DISTURBANCE IN THE IMMEDIATE VICINITY OF THE PROJECT SITE. THE CONTRACTOR SHALL BE RESPONSIBLE FOR THE PROTECTION OF ALL HISTORIC OR PREHISTORIC REMAINS, INCLUDING BUT NOT LIMITED TO, STRUCTURES, REMAINS, OR OTHER HISTORIC REMAINS THAT MAY BE ASSOCIATED WITH NATIVE AMERICAN CULTURES, OR EARLY COLONIAL OR AMERICAN SETTLEMENT ARE ENCOUNTERED AT ANY TIME WITHIN THE PROJECT SITE AREA. THE PERMITTED PROJECT SHALL COMPLY WITH ALL ACTIVITIES INVOLVING SUBSURFACE DISTURBANCE IN THE IMMEDIATE VICINITY OF THE PROJECT SITE. THE CONTRACTOR SHALL BE RESPONSIBLE FOR THE PROTECTION OF ALL HISTORIC OR PREHISTORIC REMAINS, INCLUDING BUT NOT LIMITED TO, STRUCTURES, REMAINS, OR OTHER HISTORIC REMAINS THAT MAY BE ASSOCIATED WITH NATIVE AMERICAN CULTURES, OR EARLY COLONIAL OR AMERICAN SETTLEMENT ARE ENCOUNTERED AT ANY TIME WITHIN THE PROJECT SITE AREA. THE PERMITTED PROJECT SHALL COMPLY WITH ALL ACTIVITIES INVOLVING SUBSURFACE DISTURBANCE IN THE IMMEDIATE VICINITY OF THE PROJECT SITE. THE CONTRACTOR SHALL BE RESPONSIBLE FOR THE PROTECTION OF ALL HISTORIC OR PREHISTORIC REMAINS, INCLUDING BUT NOT LIMITED TO, STRUCTURES, REMAINS, OR OTHER HISTORIC REMAINS THAT MAY BE ASSOCIATED WITH NATIVE AMERICAN CULTURES, OR EARLY COLONIAL OR AMERICAN SETTLEMENT ARE ENCOUNTERED AT ANY TIME WITHIN THE PROJECT SITE AREA. THE PERMITTED PROJECT SHALL COMPLY WITH ALL ACTIVITIES INVOLVING SUBSURFACE DISTURBANCE IN THE IMMEDIATE VICINITY OF THE PROJECT SITE. THE CONTRACTOR SHALL BE RESPONSIBLE FOR THE PROTECTION OF ALL HISTORIC OR PREHISTORIC REMAINS, INCLUDING BUT NOT LIMITED TO, STRUCTURES, REMAINS, OR OTHER HISTORIC REMAINS THAT MAY BE ASSOCIATED WITH NATIVE AMERICAN CULTURES, OR EARLY COLONIAL OR AMERICAN SETTLEMENT ARE ENCOUNTERED AT ANY TIME WITHIN THE PROJECT SITE AREA. THE PERMITTED PROJECT SHALL COMPLY WITH ALL ACTIVITIES INVOLVING SUBSURFACE DISTURBANCE IN THE IMMEDIATE VICINITY OF THE PROJECT SITE. THE CONTRACTOR SHALL BE RESPONSIBLE FOR THE PROTECTION OF ALL HISTORIC OR PREHISTORIC REMAINS, INCLUDING BUT NOT LIMITED TO, STRUCTURES, REMAINS, OR OTHER HISTORIC REMAINS THAT MAY BE ASSOCIATED WITH NATIVE AMERICAN CULTURES, OR EARLY COLONIAL OR AMERICAN SETTLEMENT ARE ENCOUNTERED AT ANY TIME WITHIN THE PROJECT SITE AREA. THE PERMITTED PROJECT SHALL COMPLY WITH ALL ACTIVITIES INVOLVING SUBSURFACE DISTURBANCE IN THE IMMEDIATE VICINITY OF THE PROJECT SITE. THE CONTRACTOR SHALL BE RESPONSIBLE FOR THE PROTECTION OF ALL HISTORIC OR PREHISTORIC REMAINS, INCLUDING BUT NOT LIMITED TO, STRUCTURES, REMAINS, OR OTHER HISTORIC REMAINS THAT MAY BE ASSOCIATED WITH NATIVE AMERICAN CULTURES, OR EARLY COLONIAL OR AMERICAN SETTLEMENT ARE ENCOUNTERED AT ANY TIME WITHIN THE PROJECT SITE AREA. THE PERMITTED PROJECT SHALL COMPLY WITH ALL ACTIVITIES INVOLVING SUBSURFACE DISTURBANCE IN THE IMMEDIATE VICINITY OF THE PROJECT SITE. THE CONTRACTOR SHALL BE RESPONSIBLE FOR THE PROTECTION OF ALL HISTORIC OR PREHISTORIC REMAINS, INCLUDING BUT NOT LIMITED TO, STRUCTURES, REMAINS, OR OTHER HISTORIC REMAINS THAT MAY BE ASSOCIATED WITH NATIVE AMERICAN CULTURES, OR EARLY COLONIAL OR AMERICAN SETTLEMENT ARE ENCOUNTERED AT ANY TIME WITHIN THE PROJECT SITE AREA. THE PERMITTED PROJECT SHALL COMPLY WITH ALL ACTIVITIES INVOLVING SUBSURFACE DISTURBANCE IN THE IMMEDIATE VICINITY OF THE PROJECT SITE. THE CONTRACTOR SHALL BE RESPONSIBLE FOR THE PROTECTION OF ALL HISTORIC OR PREHISTORIC REMAINS, INCLUDING BUT NOT LIMITED TO, STRUCTURES, REMAINS, OR OTHER HISTORIC REMAINS THAT MAY BE ASSOCIATED WITH NATIVE AMERICAN CULTURES, OR EARLY COLONIAL OR AMERICAN SETTLEMENT ARE ENCOUNTERED AT ANY TIME WITHIN THE PROJECT SITE AREA. THE PERMITTED PROJECT SHALL COMPLY WITH ALL ACTIVITIES INVOLVING SUBSURFACE DISTURBANCE IN THE IMMEDIATE VICINITY OF THE PROJECT SITE. THE CONTRACTOR SHALL BE RESPONSIBLE FOR THE PROTECTION OF ALL HISTORIC OR PREHISTORIC REMAINS, INCLUDING BUT NOT LIMITED TO, STRUCTURES, REMAINS, OR OTHER HISTORIC REMAINS THAT MAY BE ASSOCIATED WITH NATIVE AMERICAN CULTURES, OR EARLY COLONIAL OR AMERICAN SETTLEMENT ARE ENCOUNTERED AT ANY TIME WITHIN THE PROJECT SITE AREA. THE PERMITTED PROJECT SHALL COMPLY WITH ALL ACTIVITIES INVOLVING SUBSURFACE DISTURBANCE IN THE IMMEDIATE VICINITY OF THE PROJECT SITE. THE CONTRACTOR SHALL BE RESPONSIBLE FOR THE PROTECTION OF ALL HISTORIC OR PREHISTORIC REMAINS, INCLUDING BUT NOT LIMITED TO, STRUCTURES, REMAINS, OR OTHER HISTORIC REMAINS THAT MAY BE ASSOCIATED WITH NATIVE AMERICAN CULTURES, OR EARLY COLONIAL OR AMERICAN SETTLEMENT ARE ENCOUNTERED AT ANY TIME WITHIN THE PROJECT SITE AREA. THE PERMITTED PROJECT SHALL COMPLY WITH ALL ACTIVITIES INVOLVING SUBSURFACE DISTURBANCE IN THE IMMEDIATE VICINITY OF THE PROJECT SITE. THE CONTRACTOR SHALL BE RESPONSIBLE FOR THE PROTECTION OF ALL HISTORIC OR PREHISTORIC REMAINS, INCLUDING BUT NOT LIMITED TO, STRUCTURES, REMAINS, OR OTHER HISTORIC REMAINS THAT MAY BE ASSOCIATED WITH NATIVE AMERICAN CULTURES, OR EARLY COLONIAL OR AMERICAN SETTLEMENT ARE ENCOUNTERED AT ANY TIME WITHIN THE PROJECT SITE AREA. THE PERMITTED PROJECT SHALL COMPLY WITH ALL ACTIVITIES INVOLVING SUBSURFACE DISTURBANCE IN THE IMMEDIATE VICINITY OF THE PROJECT SITE. THE CONTRACTOR SHALL BE RESPONSIBLE FOR THE PROTECTION OF ALL HISTORIC OR PREHISTORIC REMAINS, INCLUDING BUT NOT LIMITED TO, STRUCTURES, REMAINS, OR OTHER HISTORIC REMAINS THAT MAY BE ASSOCIATED WITH NATIVE AMERICAN CULTURES, OR EARLY COLONIAL OR AMERICAN SETTLEMENT ARE ENCOUNTERED AT ANY TIME WITHIN THE PROJECT SITE AREA. THE PERMITTED PROJECT SHALL COMPLY WITH ALL ACTIVITIES INVOLVING SUBSURFACE DISTURBANCE IN THE IMMEDIATE VICINITY OF THE PROJECT SITE. THE CONTRACTOR SHALL BE RESPONSIBLE FOR THE PROTECTION OF ALL HISTORIC OR PREHISTORIC REMAINS, INCLUDING BUT NOT LIMITED TO, STRUCTURES, REMAINS, OR OTHER HISTORIC REMAINS THAT MAY BE ASSOCIATED WITH NATIVE AMERICAN CULTURES, OR EARLY COLONIAL OR AMERICAN SETTLEMENT ARE ENCOUNTERED AT ANY TIME WITHIN THE PROJECT SITE AREA. THE PERMITTED PROJECT SHALL COMPLY WITH ALL ACTIVITIES INVOLVING SUBSURFACE DISTURBANCE IN THE IMMEDIATE VICINITY OF THE PROJECT SITE. THE CONTRACTOR SHALL BE RESPONSIBLE FOR THE PROTECTION OF ALL HISTORIC OR PREHISTORIC REMAINS, INCLUDING BUT NOT LIMITED TO, STRUCTURES, REMAINS, OR OTHER HISTORIC REMAINS THAT MAY BE ASSOCIATED WITH NATIVE AMERICAN CULTURES, OR EARLY COLONIAL OR AMERICAN SETTLEMENT ARE ENCOUNTERED AT ANY TIME WITHIN THE PROJECT SITE AREA. THE PERMITTED PROJECT SHALL COMPLY WITH ALL ACTIVITIES INVOLVING SUBSURFACE DISTURBANCE IN THE IMMEDIATE VICINITY OF THE PROJECT SITE. THE CONTRACTOR SHALL BE RESPONSIBLE FOR THE PROTECTION OF ALL HISTORIC OR PREHISTORIC REMAINS, INCLUDING BUT NOT LIMITED TO, STRUCTURES, REMAINS, OR OTHER HISTORIC REMAINS THAT MAY BE ASSOCIATED WITH NATIVE AMERICAN CULTURES, OR EARLY COLONIAL OR AMERICAN SETTLEMENT ARE ENCOUNTERED AT ANY TIME WITHIN THE PROJECT SITE AREA. THE PERMITTED PROJECT SHALL COMPLY WITH ALL ACTIVITIES INVOLVING SUBSURFACE DISTURBANCE IN THE IMMEDIATE VICINITY OF THE PROJECT SITE. THE CONTRACTOR SHALL BE RESPONSIBLE FOR THE PROTECTION OF ALL HISTORIC OR PREHISTORIC REMAINS, INCLUDING BUT NOT LIMITED TO, STRUCTURES, REMAINS, OR OTHER HISTORIC REMAINS THAT MAY BE ASSOCIATED WITH NATIVE AMERICAN CULTURES, OR EARLY COLONIAL OR AMERICAN SETTLEMENT ARE ENCOUNTERED AT ANY TIME WITHIN THE PROJECT SITE AREA. THE PERMITTED PROJECT SHALL COMPLY WITH ALL ACTIVITIES INVOLVING SUBSURFACE DISTURBANCE IN THE IMMEDIATE VICINITY OF THE PROJECT SITE. THE CONTRACTOR SHALL BE RESPONSIBLE FOR THE PROTECTION OF ALL HISTORIC OR PREHISTORIC REMAINS, INCLUDING BUT NOT LIMITED TO, STRUCTURES, REMAINS, OR OTHER HISTORIC REMAINS THAT MAY BE ASSOCIATED WITH NATIVE AMERICAN CULTURES, OR EARLY COLONIAL OR AMERICAN SETTLEMENT ARE ENCOUNTERED AT ANY TIME WITHIN THE PROJECT SITE AREA. THE PERMITTED PROJECT SHALL COMPLY WITH ALL ACTIVITIES INVOLVING SUBSURFACE DISTURBANCE IN THE IMMEDIATE VICINITY OF THE PROJECT SITE. THE CONTRACTOR SHALL BE RESPONSIBLE FOR THE PROTECTION OF ALL HISTORIC OR PREHISTORIC REMAINS, INCLUDING BUT NOT LIMITED TO, STRUCTURES, REMAINS, OR OTHER HISTORIC REMAINS THAT MAY BE ASSOCIATED WITH NATIVE AMERICAN CULTURES, OR EARLY COLONIAL OR AMERICAN SETTLEMENT ARE ENCOUNTERED AT ANY TIME WITHIN THE PROJECT SITE AREA. THE PERMITTED PROJECT SHALL COMPLY WITH ALL ACTIVITIES INVOLVING SUBSURFACE DISTURBANCE IN THE IMMEDIATE VICINITY OF THE PROJECT SITE. THE CONTRACTOR SHALL BE RESPONSIBLE FOR THE PROTECTION OF ALL HISTORIC OR PREHISTORIC REMAINS, INCLUDING BUT NOT LIMITED TO, STRUCTURES, REMAINS, OR OTHER HISTORIC REMAINS THAT MAY BE ASSOCIATED WITH NATIVE AMERICAN CULTURES, OR EARLY COLONIAL OR AMERICAN SETTLEMENT ARE ENCOUNTERED AT ANY TIME WITHIN THE PROJECT SITE AREA. THE PERMITTED PROJECT SHALL COMPLY WITH ALL ACTIVITIES INVOLVING SUBSURFACE DISTURBANCE IN THE IMMEDIATE VICINITY OF THE PROJECT SITE. THE CONTRACTOR SHALL BE RESPONSIBLE FOR THE PROTECTION OF ALL HISTORIC OR PREHISTORIC REMAINS, INCLUDING BUT NOT LIMITED TO, STRUCTURES, REMAINS, OR OTHER HISTORIC REMAINS THAT MAY BE ASSOCIATED WITH NATIVE AMERICAN CULTURES, OR EARLY COLONIAL OR AMERICAN SETTLEMENT ARE ENCOUNTERED AT ANY TIME WITHIN THE PROJECT SITE AREA. THE PERMITTED PROJECT SHALL COMPLY WITH ALL ACTIVITIES INVOLVING SUBSURFACE DISTURBANCE IN THE IMMEDIATE VICINITY OF THE PROJECT SITE. THE CONTRACTOR SHALL BE RESPONSIBLE FOR THE PROTECTION OF ALL HISTORIC OR PREHISTORIC REMAINS, INCLUDING BUT NOT LIMITED TO, STRUCTURES, REMAINS, OR OTHER HISTORIC REMAINS THAT MAY BE ASSOCIATED WITH NATIVE AMERICAN CULTURES, OR EARLY COLONIAL OR AMERICAN SETTLEMENT ARE ENCOUNTERED AT ANY TIME WITHIN THE PROJECT SITE AREA. THE PERMITTED PROJECT SHALL COMPLY WITH ALL ACTIVITIES INVOLVING SUBSURFACE DISTURBANCE IN THE IMMEDIATE VICINITY OF THE PROJECT SITE. THE CONTRACTOR SHALL BE RESPONSIBLE FOR THE PROTECTION OF ALL HISTORIC OR PREHISTORIC REMAINS, INCLUDING BUT NOT LIMITED TO, STRUCTURES, REMAINS, OR OTHER HISTORIC REMAINS THAT MAY BE ASSOCIATED WITH NATIVE AMERICAN CULTURES, OR EARLY COLONIAL OR AMERICAN SETTLEMENT ARE ENCOUNTERED AT ANY TIME WITHIN THE PROJECT SITE AREA. THE PERMITTED PROJECT SHALL COMPLY WITH ALL ACTIVITIES INVOLVING SUBSURFACE DISTURBANCE IN THE IMMEDIATE VICINITY OF THE PROJECT SITE. THE CONTRACTOR SHALL BE RESPONSIBLE FOR THE PROTECTION OF ALL HISTORIC OR PREHISTORIC REMAINS, INCLUDING BUT NOT LIMITED TO, STRUCTURES, REMAINS, OR OTHER HISTORIC REMAINS THAT MAY BE ASSOCIATED WITH NATIVE AMERICAN CULTURES, OR EARLY COLONIAL OR AMERICAN SETTLEMENT ARE ENCOUNTERED AT ANY TIME WITHIN THE PROJECT SITE AREA. THE PERMITTED PROJECT SHALL COMPLY WITH ALL ACTIVITIES INVOLVING SUBSURFACE DISTURBANCE IN THE IMMEDIATE VICINITY OF THE PROJECT SITE. THE CONTRACTOR SHALL BE RESPONSIBLE FOR THE PROTECTION OF ALL HISTORIC OR PREHISTORIC REMAINS, INCLUDING BUT NOT LIMITED TO, STRUCTURES, REMAINS, OR OTHER HISTORIC REMAINS THAT MAY BE ASSOCIATED WITH NATIVE AMERICAN CULTURES, OR EARLY COLONIAL OR AMERICAN SETTLEMENT ARE ENCOUNTERED AT ANY TIME WITHIN THE PROJECT SITE AREA. THE PERMITTED PROJECT SHALL COMPLY WITH ALL ACTIVITIES INVOLVING SUBSURFACE DISTURBANCE IN THE IMMEDIATE VICINITY OF THE PROJECT SITE. THE CONTRACTOR SHALL BE RESPONSIBLE FOR THE PROTECTION OF ALL HISTORIC OR PREHISTORIC REMAINS, INCLUDING BUT NOT LIMITED TO, STRUCTURES, REMAINS, OR OTHER HISTORIC REMAINS THAT MAY BE ASSOCIATED WITH NATIVE AMERICAN CULTURES, OR EARLY COLONIAL OR AMERICAN SETTLEMENT ARE ENCOUNTERED AT ANY TIME WITHIN THE PROJECT SITE AREA. THE PERMITTED PROJECT SHALL COMPLY WITH ALL ACTIVITIES INVOLVING SUBSURFACE DISTURBANCE IN THE IMMEDIATE VICINITY OF THE PROJECT SITE. THE CONTRACTOR SHALL BE RESPONSIBLE FOR THE PROTECTION OF ALL HISTORIC OR PREHISTORIC REMAINS, INCLUDING BUT NOT LIMITED TO, STRUCTURES, REMAINS, OR OTHER HISTORIC REMAINS THAT MAY BE ASSOCIATED WITH NATIVE AMERICAN CULTURES, OR EARLY COLONIAL OR AMERICAN SETTLEMENT ARE ENCOUNTERED AT ANY TIME WITHIN THE PROJECT SITE AREA. THE PERMITTED PROJECT SHALL COMPLY WITH ALL ACTIVITIES INVOLVING SUBSURFACE DISTURBANCE IN THE IMMEDIATE VICINITY OF THE PROJECT SITE. THE CONTRACTOR SHALL BE RESPONSIBLE FOR THE PROTECTION OF ALL HISTORIC OR PREHISTORIC REMAINS, INCLUDING BUT NOT LIMITED TO, STRUCTURES, REMAINS, OR OTHER HISTORIC REMAINS THAT MAY BE ASSOCIATED WITH NATIVE AMERICAN CULTURES, OR EARLY COLONIAL OR AMERICAN SETTLEMENT ARE ENCOUNTERED AT ANY TIME WITHIN THE PROJECT SITE AREA. THE PERMITTED PROJECT SHALL COMPLY WITH ALL ACTIVITIES INVOLVING SUBSURFACE DISTURBANCE IN THE IMMEDIATE VICINITY OF THE PROJECT SITE. THE CONTRACTOR SHALL BE RESPONSIBLE FOR THE PROTECTION OF ALL HISTORIC OR PREHISTORIC REMAINS, INCLUDING BUT NOT LIMITED TO, STRUCTURES, REMAINS, OR OTHER HISTORIC REMAINS THAT MAY BE ASSOCIATED WITH NATIVE AMERICAN CULTURES, OR EARLY COLONIAL OR AMERICAN SETTLEMENT ARE ENCOUNTERED AT ANY TIME WITHIN THE PROJECT SITE AREA. THE PERMITTED PROJECT SHALL COMPLY WITH ALL ACTIVITIES INVOLVING SUBSURFACE DISTURBANCE IN THE IMMEDIATE VICINITY OF THE PROJECT SITE. THE CONTRACTOR SHALL BE RESPONSIBLE FOR THE PROTECTION OF ALL HISTORIC OR PREHISTORIC REMAINS, INCLUDING BUT NOT LIMITED TO, STRUCTURES, REMAINS, OR OTHER HISTORIC REMAINS THAT MAY BE ASSOCIATED WITH NATIVE AMERICAN CULTURES, OR EARLY COLONIAL OR AMERICAN SETTLEMENT ARE ENCOUNTERED AT ANY TIME WITHIN THE PROJECT SITE AREA. THE PERMITTED PROJECT SHALL COMPLY WITH ALL ACTIVITIES INVOLVING SUBSURFACE DISTURBANCE IN THE IMMEDIATE VICINITY OF THE PROJECT SITE. THE CONTRACTOR SHALL BE RESPONSIBLE FOR THE PROTECTION OF ALL HISTORIC OR PREHISTORIC REMAINS, INCLUDING BUT NOT LIMITED TO, STRUCTURES, REMAINS, OR OTHER HISTORIC REMAINS THAT MAY BE ASSOCIATED WITH NATIVE AMERICAN CULTURES, OR EARLY COLONIAL OR AMERICAN SETTLEMENT ARE ENCOUNTERED AT ANY TIME WITHIN THE PROJECT SITE AREA. THE PERMITTED PROJECT SHALL COMPLY WITH ALL ACTIVITIES INVOLVING SUBSURFACE DISTURBANCE IN THE IMMEDIATE VICINITY OF THE PROJECT SITE. THE CONTRACTOR SHALL BE RESPONSIBLE FOR THE PROTECTION OF ALL HISTORIC OR PREHISTORIC REMAINS, INCLUDING BUT NOT LIMITED TO, STRUCTURES, REMAINS, OR OTHER HISTORIC REMAINS THAT MAY BE ASSOCIATED WITH NATIVE AMERICAN CULTURES, OR EARLY COLONIAL OR AMERICAN SETTLEMENT ARE ENCOUNTERED AT ANY TIME WITHIN THE PROJECT SITE AREA. THE PERMITTED PROJECT SHALL COMPLY WITH ALL ACTIVITIES INVOLVING SUBSURFACE DISTURBANCE IN THE IMMEDIATE VICINITY OF THE PROJECT SITE. THE CONTRACTOR SHALL BE RESPONSIBLE FOR THE PROTECTION OF ALL HISTORIC OR PREHISTORIC REMAINS, INCLUDING BUT NOT LIMITED TO, STRUCTURES, REMAINS, OR OTHER HISTORIC REMAINS THAT MAY BE ASSOCIATED WITH NATIVE AMERICAN CULTURES, OR EARLY COLONIAL OR AMERICAN SETTLEMENT ARE ENCOUNTERED AT ANY TIME WITHIN THE PROJECT SITE AREA. THE PERMITTED PROJECT SHALL COMPLY WITH ALL ACTIVITIES INVOLVING SUBSURFACE DISTURBANCE IN THE IMMEDIATE VICINITY OF THE PROJECT SITE. THE CONTRACTOR SHALL BE RESPONSIBLE FOR THE PROTECTION OF ALL HISTORIC OR PREHISTORIC REMAINS, INCLUDING BUT NOT LIMITED TO, STRUCTURES, REMAINS, OR OTHER HISTORIC REMAINS THAT MAY BE ASSOCIATED WITH NATIVE AMERICAN CULTURES, OR EARLY COLONIAL OR AMERICAN SETTLEMENT ARE ENCOUNTERED AT ANY TIME WITHIN THE PROJECT SITE AREA. THE PERMITTED PROJECT SHALL COMPLY WITH ALL ACTIVITIES INVOLVING SUBSURFACE DISTURBANCE IN THE IMMEDIATE VICINITY OF THE PROJECT SITE. THE CONTRACTOR SHALL BE RESPONSIBLE FOR THE PROTECTION OF ALL HISTORIC OR PREHISTORIC REMAINS, INCLUDING BUT NOT LIMITED TO, STRUCTURES, REMAINS, OR OTHER HISTORIC REMAINS THAT MAY BE ASSOCIATED WITH NATIVE AMERICAN CULTURES, OR EARLY COLONIAL OR AMERICAN SETTLEMENT ARE ENCOUNTERED AT ANY TIME WITHIN THE PROJECT SITE AREA. THE PERMITTED PROJECT SHALL COMPLY WITH ALL ACTIVITIES INVOLVING SUBSURFACE DISTURBANCE IN THE IMMEDIATE VICINITY OF THE PROJECT SITE. THE CONTRACTOR SHALL BE RESPONSIBLE FOR THE PROTECTION OF ALL HISTORIC OR PREHISTORIC REMAINS, INCLUDING BUT NOT LIMITED TO, STRUCTURES, REMAINS, OR OTHER HISTORIC REMAINS THAT MAY BE ASSOCIATED WITH NATIVE AMERICAN CULTURES, OR EARLY COLONIAL OR AMERICAN SETTLEMENT ARE ENCOUNTERED AT ANY TIME WITHIN THE PROJECT SITE AREA. THE PERMITTED PROJECT SHALL COMPLY WITH ALL ACTIVITIES INVOLVING SUBSURFACE DISTURBANCE IN THE IMMEDIATE VICINITY OF THE PROJECT SITE. THE CONTRACTOR SHALL BE RESPONSIBLE FOR THE PROTECTION OF ALL HISTORIC OR PREHISTORIC REMAINS, INCLUDING BUT NOT LIMITED TO, STRUCTURES, REMAINS, OR OTHER HISTORIC REMAINS THAT MAY BE ASSOCIATED WITH NATIVE AMERICAN CULTURES, OR EARLY COLONIAL OR AMERICAN SETTLEMENT ARE ENCOUNTERED AT ANY TIME WITHIN THE PROJECT SITE AREA. THE PERMITTED PROJECT SHALL COMPLY WITH ALL ACTIVITIES INVOLVING SUBSURFACE DISTURBANCE IN THE IMMEDIATE VICINITY OF THE PROJECT SITE. THE CONTRACTOR SHALL BE RESPONSIBLE FOR THE PROTECTION OF ALL HISTORIC OR PREHISTORIC REMAINS, INCLUDING BUT NOT LIMITED TO, STRUCTURES, REMAINS, OR OTHER HISTORIC REMAINS THAT MAY BE ASSOCIATED WITH NATIVE AMERICAN CULTURES, OR EARLY COLONIAL OR AMERICAN SETTLEMENT ARE ENCOUNTERED AT ANY TIME WITHIN THE PROJECT SITE AREA. THE PERMITTED PROJECT SHALL COMPLY WITH ALL ACTIVITIES INVOLVING SUBSURFACE DISTURBANCE IN THE IMMEDIATE VICINITY OF THE PROJECT SITE. THE CONTRACTOR SHALL BE RESPONSIBLE FOR THE PROTECTION OF ALL HISTORIC OR PREHISTORIC REMAINS, INCLUDING BUT NOT LIMITED TO, STRUCTURES, REMAINS, OR OTHER HISTORIC REMAINS THAT MAY BE ASSOCIATED WITH NATIVE AMERICAN CULTURES, OR EARLY COLONIAL OR AMERICAN SETTLEMENT ARE ENCOUNTERED AT ANY TIME WITHIN THE PROJECT SITE AREA. THE PERMITTED PROJECT SHALL COMPLY WITH ALL ACTIVITIES INVOLVING SUBSURFACE DISTURBANCE IN THE IMMEDIATE VICINITY OF THE PROJECT SITE. THE CONTRACTOR SHALL BE RESPONSIBLE FOR THE PROTECTION OF ALL HISTORIC OR PREHISTORIC REMAINS, INCLUDING BUT NOT LIMITED TO, STRUCTURES, REMAINS, OR OTHER HISTORIC REMAINS THAT MAY BE ASSOCIATED WITH NATIVE AMERICAN CULTURES, OR EARLY COLONIAL OR AMERICAN SETTLEMENT ARE ENCOUNTERED AT ANY TIME WITHIN THE PROJECT SITE AREA. THE PERMITTED PROJECT SHALL COMPLY WITH ALL ACTIVITIES INVOLVING SUBSURFACE DISTURBANCE IN THE IMMEDIATE VICINITY OF THE PROJECT SITE. THE CONTRACTOR SHALL BE RESPONSIBLE FOR THE PROTECTION OF ALL HISTORIC OR PREHISTORIC REMAINS, INCLUDING BUT NOT LIMITED TO, STRUCTURES, REMAINS, OR OTHER HISTORIC REMAINS THAT MAY BE ASSOCIATED WITH NATIVE AMERICAN CULTURES, OR EARLY COLONIAL OR AMERICAN SETTLEMENT ARE ENCOUNTERED AT ANY TIME WITHIN THE PROJECT SITE AREA. THE PERMITTED PROJECT SHALL COMPLY WITH ALL ACTIVITIES INVOLVING SUBSURFACE DISTURBANCE IN THE IMMEDIATE VICINITY OF THE PROJECT SITE. THE CONTRACTOR SHALL BE RESPONSIBLE FOR THE PROTECTION OF ALL HISTORIC OR PREHISTORIC REMAINS, INCLUDING BUT NOT LIMITED TO, STRUCTURES, REMAINS, OR OTHER HISTORIC REMAINS THAT MAY BE ASSOCIATED WITH NATIVE AMERICAN CULTURES, OR EARLY COLONIAL OR AMERICAN SETTLEMENT ARE ENCOUNTERED AT ANY TIME WITHIN THE PROJECT SITE AREA. THE PERMITTED PROJECT SHALL COMPLY WITH ALL ACTIVITIES INVOLVING SUBSURFACE DISTURBANCE IN THE IMMEDIATE VICINITY OF THE PROJECT SITE. THE CONTRACTOR SHALL BE RESPONSIBLE FOR THE PROTECTION OF ALL HISTORIC OR PREHISTORIC REMAINS, INCLUDING BUT NOT LIMITED TO, STRUCTURES, REMAINS, OR OTHER HISTORIC REMAINS THAT MAY BE ASSOCIATED WITH NATIVE AMERICAN CULTURES, OR EARLY COLONIAL OR AMERICAN SETTLEMENT ARE ENCOUNTERED AT ANY TIME WITHIN THE PROJECT SITE AREA. THE PERMITTED PROJECT SHALL COMPLY WITH ALL ACTIVITIES INVOLVING SUBSURFACE DISTURBANCE IN THE IMMEDIATE VICINITY OF THE PROJECT SITE. THE CONTRACTOR SHALL BE RESPONSIBLE FOR THE PROTECTION OF ALL HISTORIC OR PREHISTORIC REMAINS

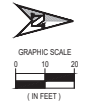




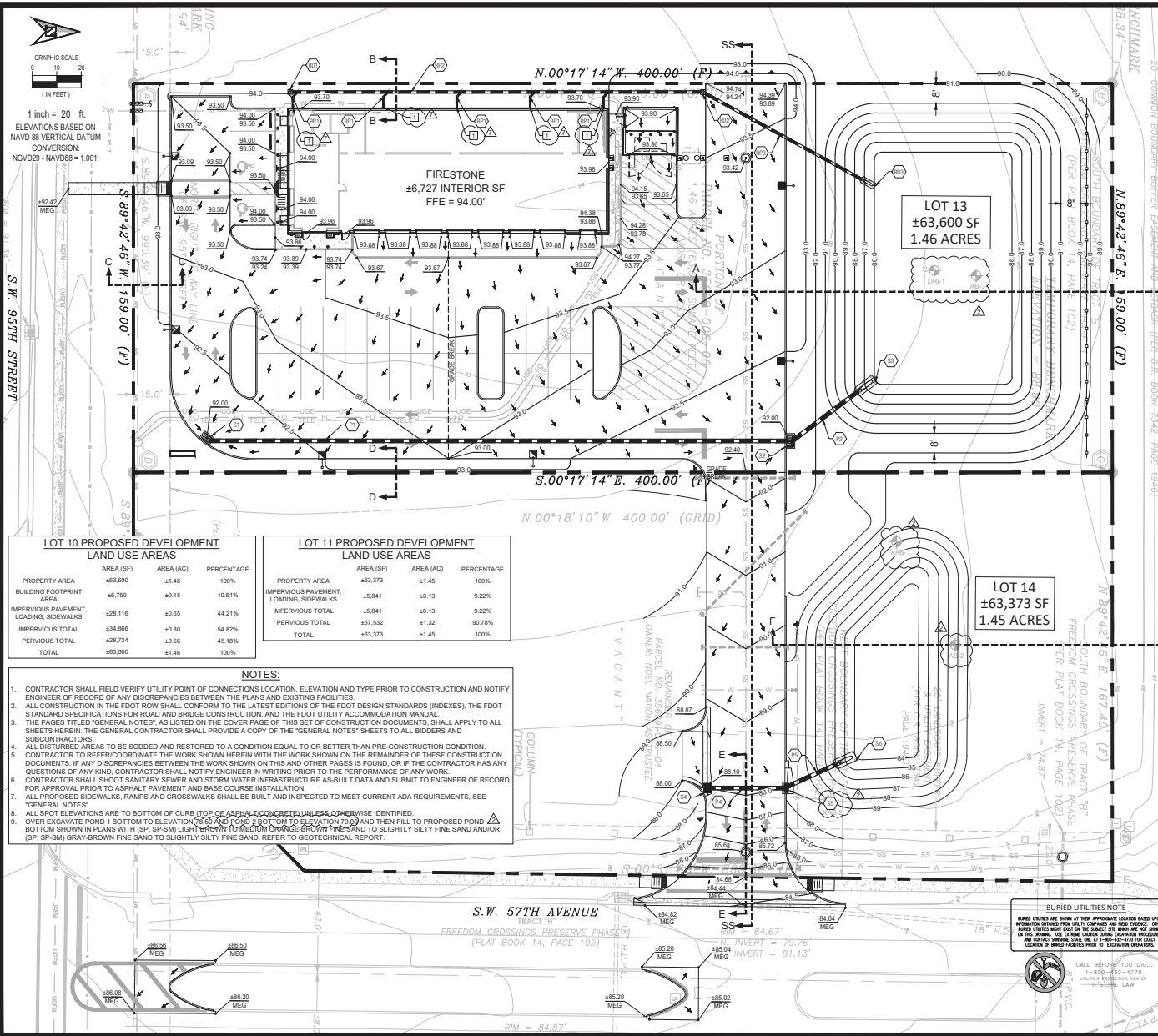








1 inch = 20 ft.  
ELEVATIONS BASED ON  
NAVD 88 VERTICAL DATUM  
CONVERSION  
NGVD29 - NAVD88 = 1.001'



#### GRADING PLAN KEYNOTES

- R01 ROOF DRAIN NO. 1  
DRAINAGE CLEAN OUT  
INVERT (PROPOSED 12" SCH-40 PVC PIPE) = 81.32'  
DETAIL: 2 / C9
- RP1 ROOF DRAIN PIPE  
DOWNSPOUT TO R02  
DETAIL: UT102/UT103/UT104 / C9  
CONTRACTOR TO COORDINATE ROOF DRAIN LOCATIONS WITH  
ARCHITECTURAL PLANS AND NOTIFY ENGINEER OF ANY  
CONFLICTS
- RP2 ROOF DRAIN PIPE  
R01 TO R02  
DETAIL: UT102/UT103/UT104 / C9  
DRAINAGE DROP OFF CLEAN OUT  
R02 INVERT (PROPOSED 12" SCH-40 PVC PIPE) = 80.28'  
DETAIL: 6 / C9
- RP3 ROOF DRAIN PIPE  
R02 TO R03  
DETAIL: UT102/UT103/UT104 / C9  
CONCRETE MITERED END SECTION  
P3 INVERT (PROPOSED 12" SCH-40 PVC PIPE) = 86.07'  
DETAIL: 3 / C9
- S1 STRUCTURE NO. 1  
TYPE "T" INLET (TOG = 92.00', BOT=87.00')  
P1 INVERT (PROPOSED 18" ADS N-12 PIPE) = 88.00'  
DETAIL: 1 / C9, (FOOT INDEX 425-053) / C9.1
- P1 S1 TO S2  
4237.9 LF OF 18" ADS-N12 PIPE AT 0.33% SLOPE  
DETAIL: UT102, 103, 104 / C9
- S2 STRUCTURE NO. 2  
TYPE "T" INLET (TOG = 92.00', BOT=85.68')  
P2 INVERT (PROPOSED 18" ADS N-12 PIPE) = 87.21'  
DETAIL: 1 / C9, (FOOT INDEX 425-053) / C9.1
- P2 S2 TO S3  
443.1 LF OF 18" ADS-N12 PIPE AT 0.33% SLOPE  
DETAIL: UT102/UT103/UT104 / C9
- S3 STRUCTURE NO. 3  
CONCRETE MITERED END SECTION  
P2 INVERT (PROPOSED 18" ADS N-12) = 86.07'  
DETAIL: 3 / C9
- S4 STRUCTURE NO. 4  
TYPE "T" GLITTER INLET  
09' STRUCTURE BOTTOM (TOG = 86.10', BOT=83.21')  
P4 INVERT (PROPOSED 18" ADS N-12) = 84.21'  
DETAIL: 1 / C9, (FOOT INDEX 425-040) / C9
- P4 S4 TO S5  
4313.3 LF OF 18" ADS-N12 PIPE AT 0.33% SLOPE  
DETAIL: UT102/UT103/UT104 / C9
- S5 STRUCTURE NO. 5  
TYPE "S" CURB INLET TOP W/ TYPE "T" ALTERNATE "A" 03.5'  
STRUCTURE BOTTOM (TOG = 86.10', BOT=83.10')  
P4 & P5 INVERT (PROPOSED 18" ADS N-12 PIPE) = 84.10'  
DETAIL: 1 / C9, (FOOT INDEX 425-010 & 425-021) / C9.1
- P5 S5 TO S6  
4356.5 LF OF 18" ADS-N12 PIPE AT 0.33% SLOPE  
DETAIL: UT102/UT103/UT104 / C9
- S6 STRUCTURE NO. 6  
CONCRETE MITERED END SECTION  
P5 INVERT (PROPOSED 18" ADS N-12) = 84.07'  
DETAIL: 3 / C9

#### ADDITIONAL KEYNOTES

- 1 ROOF DRAIN CLEANOUT, DETAIL: 7 / C9

#### PROFILE INDEX

PROFILE ID	SHEET
A-A	C9.3
B-B	C9.3
C-C	C9.3
D-D	C9.3
E-E	C9.3
F-F	C9.3

**BURIED UTILITIES NOTE**  
BASED ON THE 425-053 SHOWN ON THE PREVIOUS SHEET. OTHER  
UTILITIES SHOWN ON THE PREVIOUS SHEET ARE NOT SHOWN  
ON THIS SHEET. THE 425-053 SHOWN ON THE PREVIOUS SHEET  
AND THE 425-053 SHOWN ON THIS SHEET ARE NOT SHOWN  
ON THE PREVIOUS SHEET. THE 425-053 SHOWN ON THIS SHEET  
AND THE 425-053 SHOWN ON THE PREVIOUS SHEET ARE NOT  
SHOWN ON THE PREVIOUS SHEET. THE 425-053 SHOWN ON  
THIS SHEET ARE NOT SHOWN ON THE PREVIOUS SHEET.

Jeremy R. Anderson, State of Florida, Professional Engineer, License No. 71636  
This item has been digitally signed and sealed by Jeremy R. Anderson, P.E., on  
the date indicated here.  
Printed copies of this document are not considered signed and sealed and the  
signature must be verified on any electronic copies.

**PALMETTO CAPITAL GROUP**  
1643 WILLIAMSBURG SQUARE  
LAKELAND, FL 33803  
PHONE: (863) 806-1520



COMMONMARK ENGINEERING  
400 LIGHTWATER DRIVE  
ORLANDO, FL 32804  
(407) 955-5915  
AUTHORIZATION: 28844

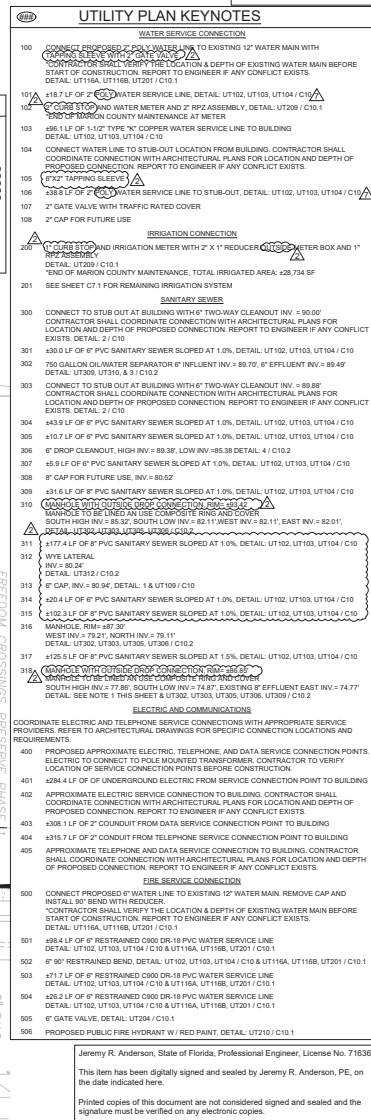
**BSRO FIRESTONE**  
MAJOR SITE PLAN  
STORE #100  
NWC OF SW 9TH ST  
&  
SW 4th AVE  
OCALA, FL 33476  
MARION COUNTY

DATE	REVISION	BY	CHKD	APP'D
04/04/2025	1	JR		
04/04/2025	2	JR		
04/04/2025	3	JR		
04/04/2025	4	JR		
04/04/2025	5	JR		
04/04/2025	6	JR		
04/04/2025	7	JR		
04/04/2025	8	JR		
04/04/2025	9	JR		
04/04/2025	10	JR		
04/04/2025	11	JR		
04/04/2025	12	JR		
04/04/2025	13	JR		
04/04/2025	14	JR		
04/04/2025	15	JR		
04/04/2025	16	JR		
04/04/2025	17	JR		
04/04/2025	18	JR		
04/04/2025	19	JR		
04/04/2025	20	JR		
04/04/2025	21	JR		
04/04/2025	22	JR		
04/04/2025	23	JR		
04/04/2025	24	JR		
04/04/2025	25	JR		
04/04/2025	26	JR		
04/04/2025	27	JR		
04/04/2025	28	JR		
04/04/2025	29	JR		
04/04/2025	30	JR		
04/04/2025	31	JR		
04/04/2025	32	JR		
04/04/2025	33	JR		
04/04/2025	34	JR		
04/04/2025	35	JR		
04/04/2025	36	JR		
04/04/2025	37	JR		
04/04/2025	38	JR		
04/04/2025	39	JR		
04/04/2025	40	JR		
04/04/2025	41	JR		
04/04/2025	42	JR		
04/04/2025	43	JR		
04/04/2025	44	JR		
04/04/2025	45	JR		
04/04/2025	46	JR		
04/04/2025	47	JR		
04/04/2025	48	JR		
04/04/2025	49	JR		
04/04/2025	50	JR		
04/04/2025	51	JR		
04/04/2025	52	JR		
04/04/2025	53	JR		
04/04/2025	54	JR		
04/04/2025	55	JR		
04/04/2025	56	JR		
04/04/2025	57	JR		
04/04/2025	58	JR		
04/04/2025	59	JR		
04/04/2025	60	JR		
04/04/2025	61	JR		
04/04/2025	62	JR		
04/04/2025	63	JR		
04/04/2025	64	JR		
04/04/2025	65	JR		
04/04/2025	66	JR		
04/04/2025	67	JR		
04/04/2025	68	JR		
04/04/2025	69	JR		
04/04/2025	70	JR		
04/04/2025	71	JR		
04/04/2025	72	JR		
04/04/2025	73	JR		
04/04/2025	74	JR		
04/04/2025	75	JR		
04/04/2025	76	JR		
04/04/2025	77	JR		
04/04/2025	78	JR		
04/04/2025	79	JR		
04/04/2025	80	JR		
04/04/2025	81	JR		
04/04/2025	82	JR		
04/04/2025	83	JR		
04/04/2025	84	JR		
04/04/2025	85	JR		
04/04/2025	86	JR		
04/04/2025	87	JR		
04/04/2025	88	JR		
04/04/2025	89	JR		
04/04/2025	90	JR		
04/04/2025	91	JR		
04/04/2025	92	JR		
04/04/2025	93	JR		
04/04/2025	94	JR		
04/04/2025	95	JR		
04/04/2025	96	JR		
04/04/2025	97	JR		
04/04/2025	98	JR		
04/04/2025	99	JR		
04/04/2025	100	JR		

PROJECT # 224.059  
DATE 04/04/2025  
SCALE 1" = 20'  
C3  
GRADING PLAN



## EROSION CONTROL DETAILS





COMMON BOK  
ENGINEERING

COMMON BOK ENGINEERING  
4030 EDGEWATER DRIVE  
ORLANDO, FL 32834  
407.916.9915  
CERIFICATE OF AUTHORIZATION: 12864

**PALME TO CAPITAL GROUP**  
1643 WILLIAMSBURG SQUARE  
LAKELAND, FL 33803  
PHONE: (863) 808-1320

B/SO FIRESTONE		MARION COUNTY	
NO.	DATE	REVISION	ISSUE
1	11/01/2024	MARION COUNTY COMMENTS	
2	11/01/2024	MARION COUNTY COMMENTS	
3	11/01/2024	MARION COUNTY COMMENTS	
4	11/01/2024	MARION COUNTY COMMENTS	
5	11/01/2024	MARION COUNTY COMMENTS	
6	11/01/2024	MARION COUNTY COMMENTS	
7	11/01/2024	MARION COUNTY COMMENTS	



STATE OF FLORIDA  
ENGINEER  
224.059

**MAJOR SITE PLAN**  
AT  
STORE FIELD  
W/IC OF 96TH ST  
8W 97TH AVE  
MARION COUNTY

PROJECT #

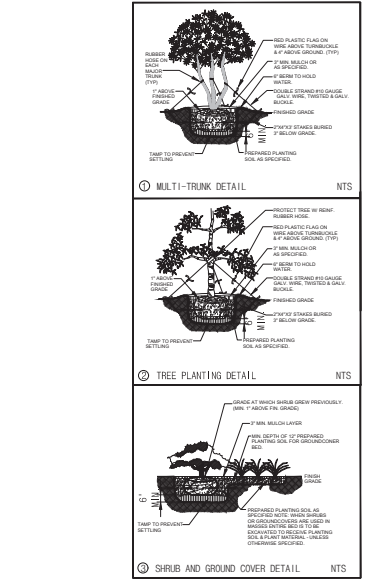
DATE 04/04/2025

SHEET 1 of 2

**C5**

UTILITY PLAN





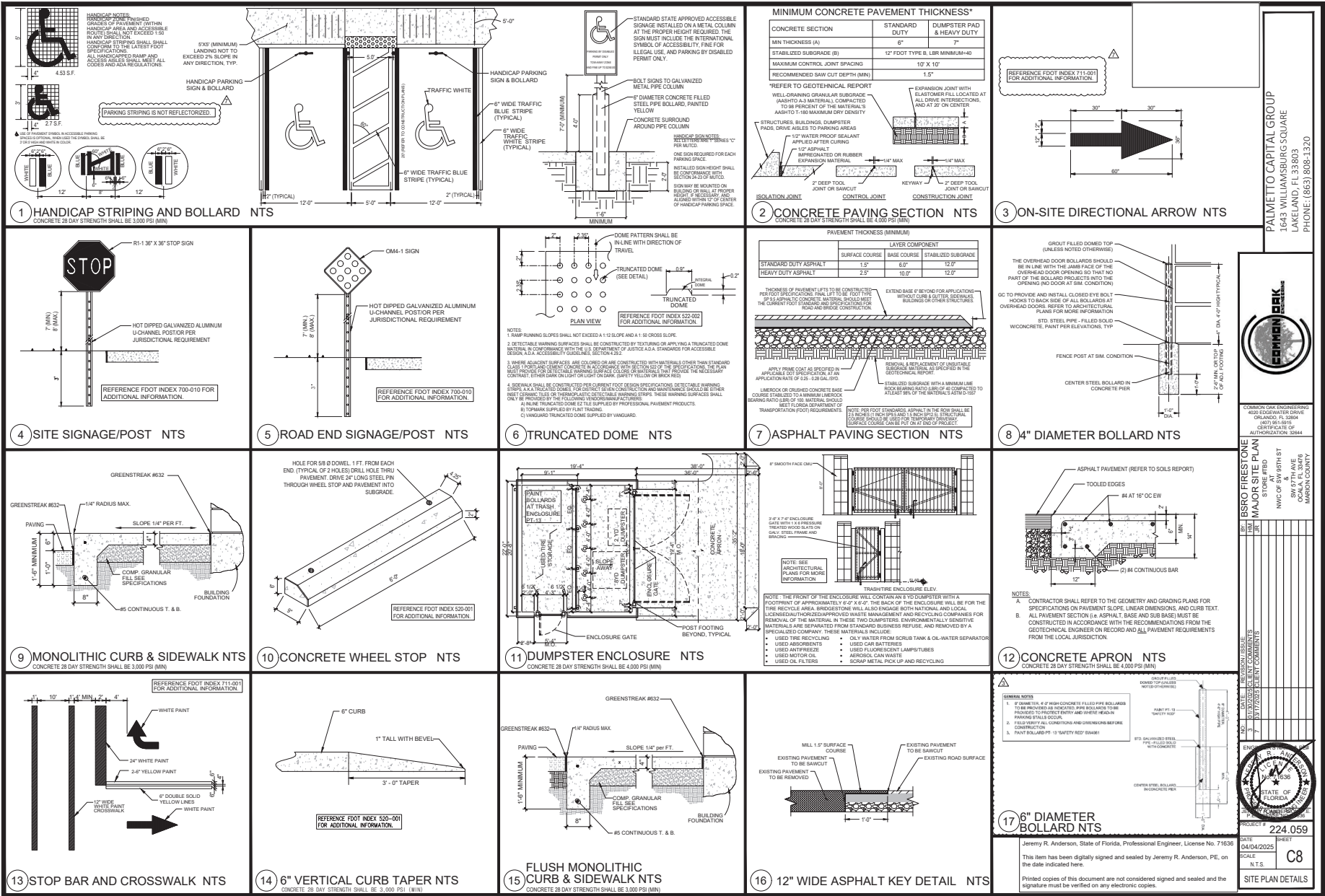
FLORIDA RLA #0321	
PROJECT #	224.059
DATE	SHEET  C6
01/31/2025	
SCALE	LANDSCAPE PLAN
1" = 20'	

Richard T. Abt, State of Florida, Landscape Architect, License No.1321

This item has been digitally signed and sealed by Richard T. Abt on the date indicated here.

Printed copies of this document are not considered signed and sealed and the signature must be verified on any electronic copies.







 Work Area  
 Lane Identification and Direction of Traffic

**SYMBOLS:**

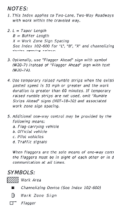
-  Work Area
-  Chamfering Device (See Index 300-600)
-  Work Zone Sign
-  Lane Modification and Direction of Travel



- Work Area
- Channelizing Device (See Index 102-000)
- D Work Zone Sign
- Lane Identification and Direction of Travel



292



**NOTES:**

1. Do not deactivate pedestrian traffic signal displayed continuously (crosswalks).
2. Place pedestrian lights across the full width of the closed crosswalk.
3. For fast-mounted signs, ensure there are adequate air passages, maintain a maximum 6" clearance from the bottom of the sign panel to the surface of the sidewalk.
4. "Sidewalk Closure" signs (SR-43) may be mounted on pedestrian ICC in accordance with the manufacturer's instructions.
5. Limit the Advance Closure (SR-42) to 100 yards to other pedestrian facilities (stop, transit stop, residence, or business entrance).

**SYMBOLS:**

- Work Area
- Work Zone Signs
- Pedestrian/Longitudinal Channelizing Device (ICB)
- Use Interlocking and Direction of Travel.

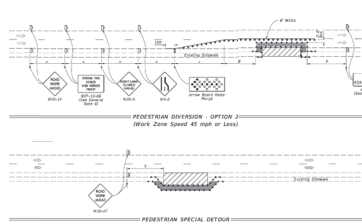
**SYMBOLS:**

-  Work Area
-  Work Zone Sign
-  Pedestrian Longitudinal Channelizing Device (LCD)
-  Lane Identification and Direction of Traffic

1 = Faster range  
 0 = Buffer range  
 1 = Work Area Edge Distance  
 0 = No Work Area Edge Distance  
 1 = 10, 15, 20, 25, 30, 35, 40, 45, 50, 55, 60, 65, 70, 75, 80, 85, 90, 95, 100, 105, 110, 115, 120, 125, 130, 135, 140, 145, 150, 155, 160, 165, 170, 175, 180, 185, 190, 195, 200, 205, 210, 215, 220, 225, 230, 235, 240, 245, 250, 255, 260, 265, 270, 275, 280, 285, 290, 295, 300, 305, 310, 315, 320, 325, 330, 335, 340, 345, 350, 355, 360, 365, 370, 375, 380, 385, 390, 395, 400, 405, 410, 415, 420, 425, 430, 435, 440, 445, 450, 455, 460, 465, 470, 475, 480, 485, 490, 495, 500, 505, 510, 515, 520, 525, 530, 535, 540, 545, 550, 555, 560, 565, 570, 575, 580, 585, 590, 595, 600, 605, 610, 615, 620, 625, 630, 635, 640, 645, 650, 655, 660, 665, 670, 675, 680, 685, 690, 695, 700, 705, 710, 715, 720, 725, 730, 735, 740, 745, 750, 755, 760, 765, 770, 775, 780, 785, 790, 795, 800, 805, 810, 815, 820, 825, 830, 835, 840, 845, 850, 855, 860, 865, 870, 875, 880, 885, 890, 895, 900, 905, 910, 915, 920, 925, 930, 935, 940, 945, 950, 955, 960, 965, 970, 975, 980, 985, 990, 995, 1000, 1005, 1010, 1015, 1020, 1025, 1030, 1035, 1040, 1045, 1050, 1055, 1060, 1065, 1070, 1075, 1080, 1085, 1090, 1095, 1100, 1105, 1110, 1115, 1120, 1125, 1130, 1135, 1140, 1145, 1150, 1155, 1160, 1165, 1170, 1175, 1180, 1185, 1190, 1195, 1200, 1205, 1210, 1215, 1220, 1225, 1230, 1235, 1240, 1245, 1250, 1255, 1260, 1265, 1270, 1275, 1280, 1285, 1290, 1295, 1300, 1305, 1310, 1315, 1320, 1325, 1330, 1335, 1340, 1345, 1350, 1355, 1360, 1365, 1370, 1375, 1380, 1385, 1390, 1395, 1400, 1405, 1410, 1415, 1420, 1425, 1430, 1435, 1440, 1445, 1450, 1455, 1460, 1465, 1470, 1475, 1480, 1485, 1490, 1495, 1500, 1505, 1510, 1515, 1520, 1525, 1530, 1535, 1540, 1545, 1550, 1555, 1560, 1565, 1570, 1575, 1580, 1585, 1590, 1595, 1600, 1605, 1610, 1615, 1620, 1625, 1630, 1635, 1640, 1645, 1650, 1655, 1660, 1665, 1670, 1675, 1680, 1685, 1690, 1695, 1700, 1705, 1710, 1715, 1720, 1725, 1730, 1735, 1740, 1745, 1750, 1755, 1760, 1765, 1770, 1775, 1780, 1785, 1790, 1795, 1800, 1805, 1810, 1815, 1820, 1825, 1830, 1835, 1840, 1845, 1850, 1855, 1860, 1865, 1870, 1875, 1880, 1885, 1890, 1895, 1900, 1905, 1910, 1915, 1920, 1925, 1930, 1935, 1940, 1945, 1950, 1955, 1960, 1965, 1970, 1975, 1980, 1985, 1990, 1995, 2000, 2005, 2010, 2015, 2020, 2025, 2030, 2035, 2040, 2045, 2050, 2055, 2060, 2065, 2070, 2075, 2080, 2085, 2090, 2095, 2100, 2105, 2110, 2115, 2120, 2125, 2130, 2135, 2140, 2145, 2150, 2155, 2160, 2165, 2170, 2175, 2180, 2185, 2190, 2195, 2200, 2205, 2210, 2215, 2220, 2225, 2230, 2235, 2240, 2245, 2250, 2255, 2260, 2265, 2270, 2275, 2280, 2285, 2290, 2295, 2300, 2305, 2310, 2315, 2320, 2325, 2330, 2335, 2340, 2345, 2350, 2355, 2360, 2365, 2370, 2375, 2380, 2385, 2390, 2395, 2400, 2405, 2410, 2415, 2420, 2425, 2430, 2435, 2440, 2445, 2450, 2455, 2460, 2465, 2470, 2475, 2480, 2485, 2490, 2495, 2500, 2505, 2510, 2515, 2520, 2525, 2530, 2535, 2540, 2545, 2550, 2555, 2560, 2565, 2570, 2575, 2580, 2585, 2590, 2595, 2600, 2605, 2610, 2615, 2620, 2625, 2630, 2635, 2640, 2645, 2650, 2655, 2660, 2665, 2670, 2675, 2680, 2685, 2690, 2695, 2700, 2705, 2710, 2715, 2720, 2725, 2730, 2735, 2740, 2745, 2750, 2755, 2760, 2765, 2770, 2775, 2780, 2785, 2790, 2795, 2800, 2805, 2810, 2815, 2820, 2825, 2830, 2835, 2840, 2845, 2850, 2855, 2860, 2865, 2870, 2875, 2880, 2885, 2890, 2895, 2900, 2905, 2910, 2915, 2920, 2925, 2930, 2935, 2940, 2945, 2950, 2955, 2960, 2965, 2970, 2975, 2980, 2985, 2990, 2995, 3000, 3005, 3010, 3015, 3020, 3025, 3030, 3035, 3040, 3045, 3050, 3055, 3060, 3065, 3070, 3075, 3080, 3085, 3090, 3095, 3100, 3105, 3110, 3115, 3120, 3125, 3130, 3135, 3140, 3145, 3150, 3155, 3160, 3165, 3170, 3175, 3180, 3185, 3190, 3195, 3200, 3205, 3210, 3215, 3220, 3225, 3230, 3235, 3240, 3245, 3250, 3255, 3260, 3265, 3270, 3275, 3280, 3285, 3290, 3295, 3300, 3305, 3310, 3315, 3320, 3325, 3330, 3335, 3340, 3345, 3350, 3355, 3360, 3365, 3370, 3375, 3380, 3385, 3390, 3395, 3400, 3405, 3410, 3415, 3420, 3425, 3430, 3435, 3440, 3445, 3450, 3455, 3460, 3465, 3470, 3475, 3480, 3485, 3490, 3495, 3500, 3505, 3510, 3515, 3520, 3525, 3530, 3535, 3540, 3545, 3550, 3555, 356

**SYMBOLS:**

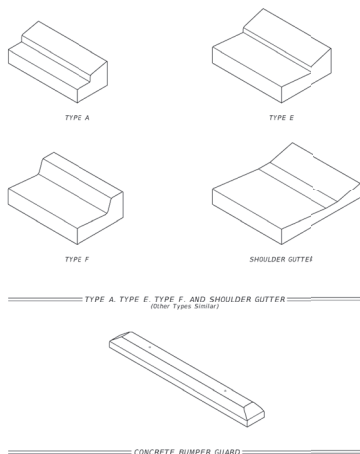
-  Work Area
-  Temporary Pedestrian Way
-  Channelizing Device (See Index 102-600)
-  Pedestrian Longitudinal Channelizing Device (See Index 102-600)
-  Work Zone Sign
-  Jersey Barrier
-  Crash Cushion



Printed copies of this document are not considered signed and sealed and the signature must be verified on any electronic copies.

1. For curb, gutter and curb & gutter provide  $\frac{1}{4}$ " -  $\frac{1}{2}$ " contraction joints at 10' centers (max.). Contraction joints adjacent to concrete pavement on tangents and flat curves are to match the pavement joints, with intermediate joints not to exceed 10' centers.
2. Locate expansion joints for curb, gutter and curb & gutter in accordance with Specification 520.

TABLE OF CONTENTS:	
Sheet	Description
1	General Notes and Contents
2	Concrete Curb and Gutter
3	Curb and Gutter Joints and Endings, Concrete Bumbar Guard, and Asphaltic Concrete Curb

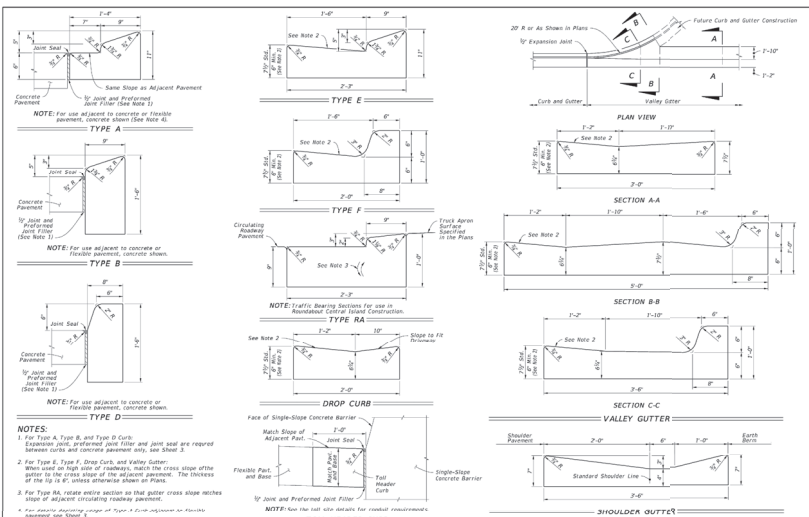


DESCRIPTION
-------------


 FY 2024-25  
 STANDARD PLANS

CURB AND GUTTER

INDEX	SHEET
520-001	1 of 3

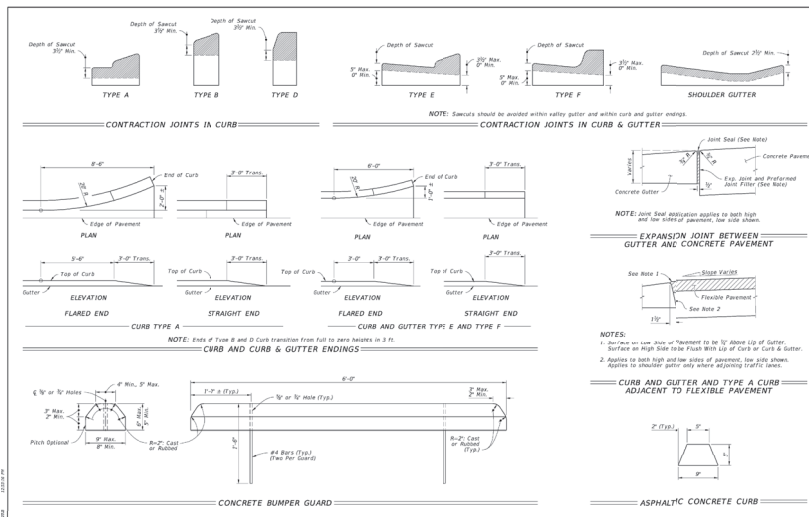


DESCRIPTION
-------------

FDOT  
FY 2024-25  
STANDARD PLANS

CURB AND GUTTER

INDEX	SHEET
520-001	2 of 3



WORD/NAME	DESCRIPTION
-----------	-------------

FDOT  
FY 2024-25  
STANDARD PLANS

CURB AND GUTTEI

INDEX	SHEET
520-001	3 of 3

Jeremy R. Anderson, State of Florida, Professional Engineer, License No. 7163

This item has been digitally signed and sealed by Jeremy R. Anderson, PE, on the date indicated here.

Printed copies of this document are not considered signed and sealed and the signature must be verified on any electronic copies.

**PALMETTO CAPITAL GROUP**  
1643 WILLIAMSBURG SQUARE  
LAKELAND, FL 33803  
PHONE: (863) 808-1320



COMMON OAK ENGINEERING  
4020 EDGEWATER DRIVE  
ORLANDO, FL 32804  
(407) 951-5215  
CERTIFICATE OF  
AUTHORIZATION: 32844

**BSRO FIRESTONE  
MAJOR SITE PLAN**  
STORE #TBD  
AT  
NWC OF SW 95TH ST  
&  
SW 57TH AVE  
OCALA, FL 33476

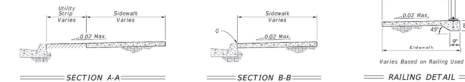
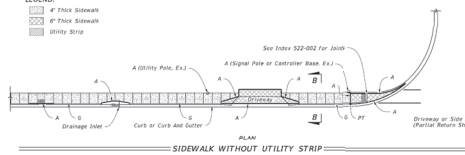
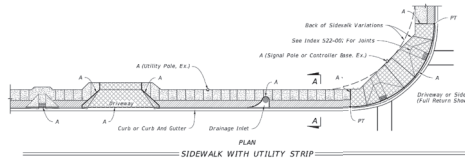
[illegible]

PROJECT # 224.05

36	DATE 04/04/2025	SHEET  C8.1
	SCALE N.T.S.	
FDOT DETAILS		

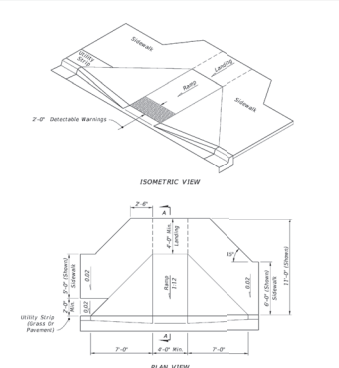
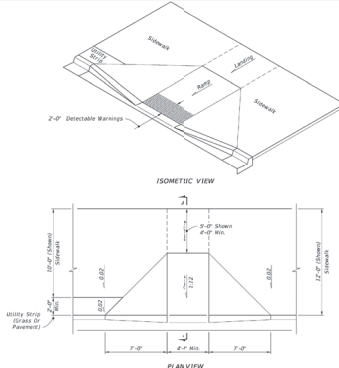
**LEGEND:**

- A- 1/2" Expansion Joints (Preferred Joint Filter) between the sidewalk and driveways, sidewalk intersections, and all other fixed objects (e.g. drainage inlets and utility poles)
- B- 1/2" Dummy Joints, Tooled
- C- 1/2" Farned Open Joints
- D- 1/4" Saw Cut Joints, 150' Deep (within 96 hours) Max. 5' Inters
- E- 1/4" Saw Cut Joints, 150' Deep (within 12 hours) Max. 30-Inters Joints Required When Length Exceeds 30'
- F- 1/2" Expansion Joint When Any of Sidewalk Exceeds 120' Intermediate locations called for in the plans or at locations at the discretion of the Engineer.
- G- Cold Joint With Bond Breaker, Tooled



### GENERAL NOTES AND CONCRETE SIDEWALK ON CURBED ROADWAYS

LAST REVISION 11/01/18	DESCRIPTION:	 FY 2024-25 STANDARD PLANS	CONCRETE SIDEWALK	INDEX 522-001	SHEET 1 of 2
------------------------------	--------------	--	-------------------	------------------	-----------------

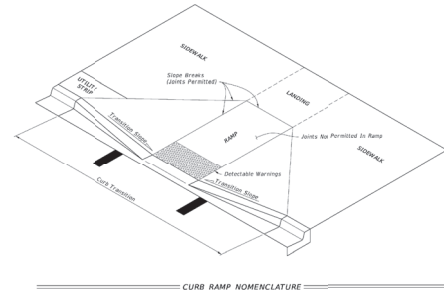


SIDEWALK CURB RAMPS CR-A AND CR-B

LAST REVISION 11/01/20	DESCRIPTION:	 FY 2024-25 STANDARD PLANS	DETECTABLE WARNINGS AND SIDEWALK CURB RAMPS	INDEX 522-002	SHEET 2 of 7
------------------------------	--------------	--	---	------------------	-----------------

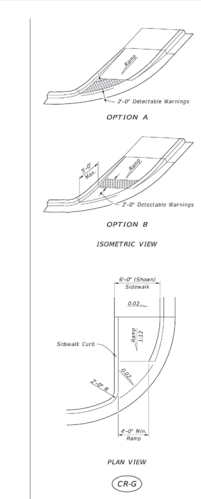
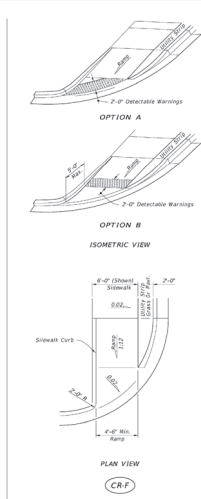
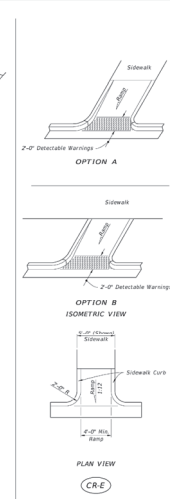
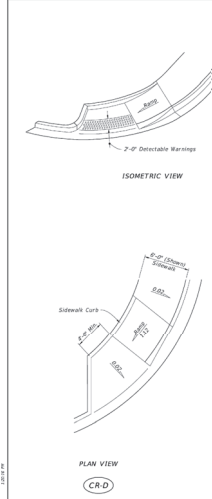
**GENERAL NOTES:**

- 1. **Cross Shapes and Corners:**
  - A. **Handing:** With leading of the finger (i.e., 0.0, 0.01, and 1.2) showing in this Index are maximums. With trailing of the finger, provide the minimum feasible shape.
  - B. **Landings:** must have cross-lands like an arrow or equal in 0.02 in any direction.
  - C. **Curves:** must be smooth and continuous. No sharp corners or sharp change of curve.
  - D. **Ramp angles:** are required to exceed 15° over in landing.
- 2. **Handing:**
  - A. **Handing:** must be smooth and continuous. No sharp corners or sharp change of curve. With Index 322-001, and .noting: *Landings* are the ramp portion of the Cross Ramp
- 3. **Curb, Curb, and Joint: Not Surface Slopes:**
  - A. **Handing:** to Index 322-001 for concrete channels and sidewalk details.
  - B. **Remove any existing curb, curb and gutter, or sidewalk to the nearest joint beyond the curb transition or to the extent that the remaining section is less than 5 feet long.**
  - C. **Handing:** is 4° or minimum. *Handed* sidewalk or Shallow curb for *Handing* as shown in the Plans.
- 4. **Handing and Identification:**
  - A. **Sidewalk curb alpha-identifications (i.e., CB-6)** are shared for *Handing* purposes in the Plans.
  - B. **Alpha-identifications CB-6 and CB-8** are intentionally omitted.
- 5. **Detachable Warnings:**
  - A. **Initial detestable warnings** in accordance with Specification 537.
  - B. **Final detestable warnings** across the full width of the curb or landing, is a minimum of 2 feet. The width of the curb or landing in the Plans shall not be greater than 1 foot from the back of the curb or edge of pavement.
  - C. **Handing:** is 4° or minimum. *Handed* sidewalk or Shallow curb for *Handing* as shown in the Plans. The width of the curb or landing in the Plans shall not be greater than 1 foot from the back of the curb or edge of pavement.



CURB RAMP NOMENCLATURE =

LAST REVISION 11/01/21	DESCRIPTION:	 FY 2024-25 STANDARD PLANS	DETECTABLE WARNINGS AND SIDEWALK CURB RAMPS	INDEX 522-002	SHEET 1 of 7
------------------------------	--------------	--	---	------------------	-----------------



SIDEWALK CURB RAMFS CR-D, CR-E, CR-F &amp; CR-G

LAST REVISION 11/01/21		DESCRIPTION:	FY 2024-25 STANDARD PLANS	DETECTABLE WARNINGS AND SIDEWALK CURB RAMPS	INDEX 522-002	SHEET 4 of 7
------------------------------	--	--------------	--	---	------------------	-----------------

Jeremy R. Anderson, State of Florida, Professional Engineer, License No. 71636

This item has been digitally signed and sealed by Jeremy R. Anderson, PE, on the date indicated here.

Printed copies of this document are not considered signed and sealed and the signature must be verified on any electronic copies.

**PALMETTO CAPITAL GROUP**  
1643 WILLIAMSBURG SQUARE  
LAKELAND, FL 33803  
PHONE: (863) 808-1320



COMMON OAK ENGINEERING  
4020 EDGEWATER DRIVE  
ORLANDO, FL 32804  
(407) 951-5915  
CERTIFICATE OF  
AUTHORIZATION: 32644

**PRO FIRESTONE  
MAJOR SITE PLAN**  
STORE #T8D  
AT  
NWC OF SW 95TH ST  
&  
SW 57TH AVE  
OCALA, FL 33476  
MARION COUNTY



DATE 04/04/2025	SHEET C8.3
SCALE N.T.S.	
FDOT DETAILS	



LAST REVISION 11/01/21	DESCRIPTION:	 FY 2024-25 STANDARD PLANS	PAVEMENT MARKINGS	INDEX 711-001	SHEET 8 of 13
------------------------------	--------------	--	-------------------	------------------	------------------

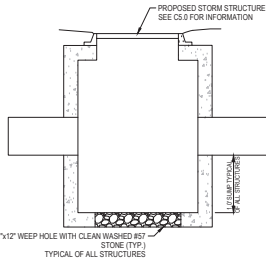


LAST REVISION 11/01/21	DESCRIPTION:	 FY 2024-25 STANDARD PLANS	PAVEMENT MARKINGS	INDEX 711-001	SHEET 9 of 13
------------------------------	--------------	--	-------------------	------------------	------------------

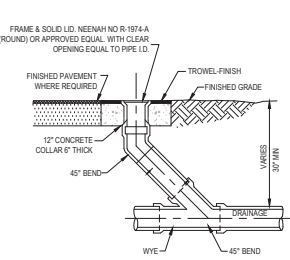
LAST REVISION 11/01/22	DESCRIPTION: REVISED	 FY 2024-25 STANDARD PLANS	PAVEMENT MARKINGS	INDEX 711-001	SHEET 2 of 13
------------------------------	-------------------------	--	-------------------	------------------	------------------

Printed copies of this document are not considered signed and sealed and the signature must be verified on any electronic copies.

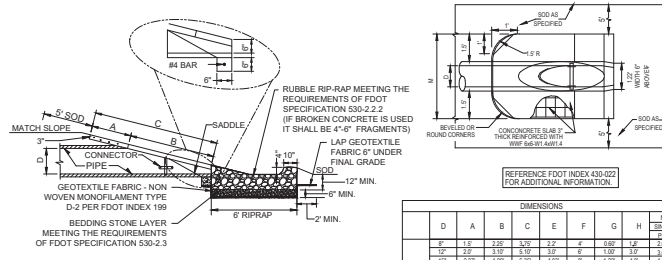




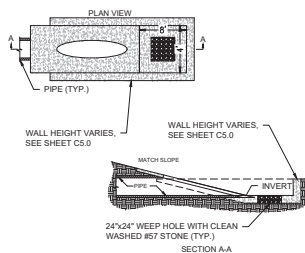
1 STORM STRUCTURE  
WEEP HOLE NTS



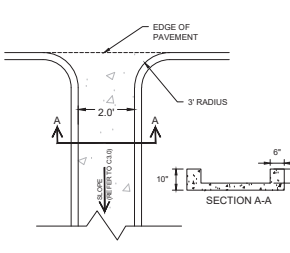
2 DRAINAGE CLEANOUT NTS



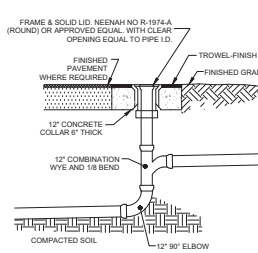
3 MITERED END SECTION NTS



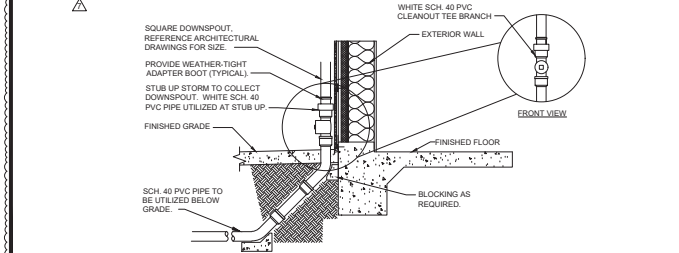
4 MITERED END SECTION SUMP NTS



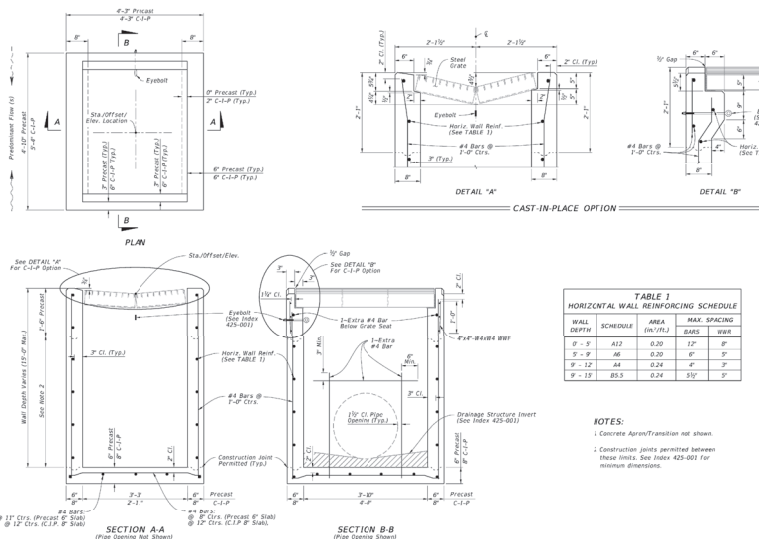
5 CONCRETE FLUME NTS  
CONCRETE 28 DAY STRENGTH SHALL BE 3,000 PSI (MIN)



6 DROP CLEANOUT NTS

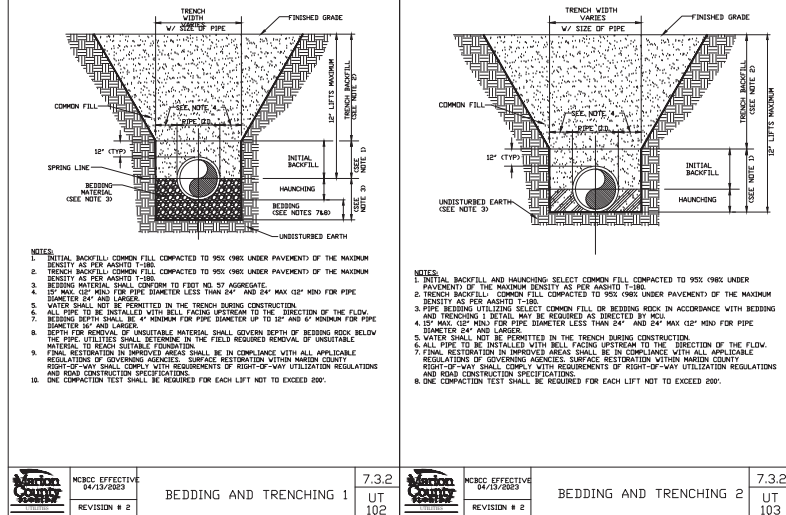


7 ROOF DRAIN CLEANOUT NTS



WALL DEPTH	SCHEDULE	AREA (IN <sup>2</sup> /LF)	MAX. SPACING	MAX. SPACING
0 - 5	A12	0.20	12"	8"
6 - 9	A6	0.20	12"	8"
10 - 12	A4	0.24	12"	8"
13 - 15	B5.5	0.24	12"	8"

NOTES:  
1. Concrete layout/transition not shown.  
2. Construction joints permitted between these limits. See Index 425-001 for rebar dimensions.



<p>MBCC EFFECTIVE 04/13/2003</p> <p>REVISION # 2</p>	<p>7.3.2</p> <p>UT 102</p>	<p>MBCC EFFECTIVE 04/13/2003</p> <p>REVISION # 2</p>	<p>7.3.2</p> <p>UT 103</p>
--	----------------------------	--	----------------------------

Jeremy R. Anderson, State of Florida, Professional Engineer, License No. 71636  
This item has been digitally signed and sealed by Jeremy R. Anderson, PE, on the date indicated here.

Printed copies of this document are not considered signed and sealed and the signature must be verified on any electronic copies.

PALMETTO CAPITAL GROUP  
1643 WILLIAMSBURG SQUARE  
LAKELAND, FL 33803  
PHONE: (863) 808-1520



COMMON OAK ENGINEERING  
4000 EAGLEWATER DRIVE  
ORLANDO, FL 32834  
(407) 961-0015  
CERTIFICATE OF AUTHORIZATION 32844

BSRO FIRESTONE  
JUL  
MAJOR SITE PLAN  
STORE #100  
NWC OF SW 94TH ST  
&  
SW 14th AVE  
OCALA, FL 33476  
MARION COUNTY

DATE	REVISION/ISSUE	COMMENTS
03/17/2003	1	ISSUED FOR PERMIT

DATE	REVISION/ISSUE	COMMENTS
03/17/2003	1	ISSUED FOR PERMIT



PROJECT # 224.059

DATE 04/04/2025  
SCALE N.T.S.  
SHEET C9

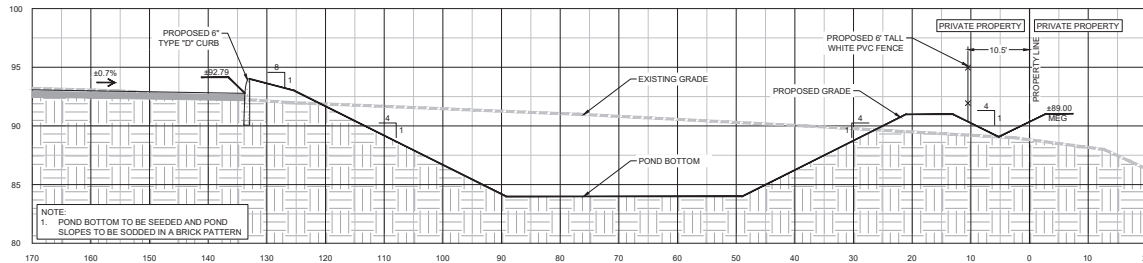
GRADING DETAILS



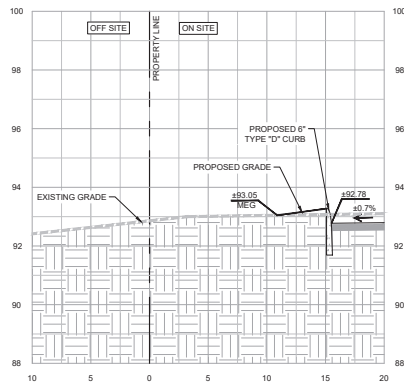


LEGEND		
	EXISTING EARTH	
	CONCRETE	
	ASPHALT PAVEMENT	

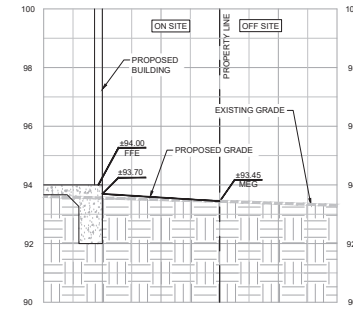
POND 1 STAGING TABLE	
100 YEAR / 24 HR	90.00'
WQTV	84.94'
POND BOTTOM	84.00'
SHWE	79.75'
BASE OF AQUIFER	78.75'



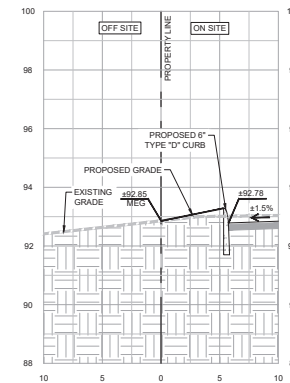
**PROFILE A-A (DRIVEWAY AND POND1)**  
SCALE: 1" IS 2' (VERTICAL) 1" IS 10' (HORIZONTAL)  
NOTE: ELEVATIONS BASED NAVD 88 VERTICAL DATUM



**PROFILE C-C (SOUTH PROPERTY LINE)**  
SCALE: 1" IS 2' (VERTICAL) 1" IS 5' (HORIZONTAL)  
NOTE: ELEVATIONS BASED NAVD 88 VERTICAL DATUM



**PROFILE B-B (WEST PROPERTY LINE)**  
SCALE: 1" IS 2' (VERTICAL) 1" IS 5' (HORIZONTAL)  
NOTE: ELEVATIONS BASED NAVD 88 VERTICAL DATUM



**PROFILE D-D (EAST PROPERTY LINE)**  
SCALE: 1" IS 2' (VERTICAL) 1" IS 5' (HORIZONTAL)  
NOTE: ELEVATIONS BASED NAVD 88 VERTICAL DATUM

Jeremy R. Anderson, State of Florida, Professional Engineer, License No. 71636  
This item has been digitally signed and sealed by Jeremy R. Anderson, P.E., on the date indicated here.  
Printed copies of this document are not considered signed and sealed and the signature must be verified on any electronic copies.

**PALMETTO CAPITAL GROUP**  
1643 WILLIAMSBURG SQUARE  
LAKELAND, FL 33803  
PHONE: (863) 808-1520



COMMON OAK ENGINEERING  
4008 EAGLEWATER DRIVE  
ORLANDO, FL 32804  
(407) 951-9915  
AUTHORIZATION: 32844

**BSRO FIRESTONE**  
AT  
STORE #180  
NWC OF SW 98TH  
SW 57TH AVE  
OCALA, FL 33476  
MARION COUNTY

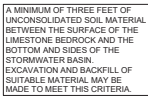
NO.	DATE	REVISION/ISSUE
1		
2		
3		
4		
5		
6		
7		
8		
9		
10		



PROJECT # **224.059**

DATE **09/25/2024**  
SCALE **N.T.S.**  
SHEET **C9.2**

**PROFILES**



SHALLOW EROSION/CLIVITY

BACKFILL AND COMPACT WITH LOW PERMEABILITY MATERIAL, SUCH AS CLAY-GRADE OR CLAY

DEEP EROSION/CLIVITY

LEACH

COMPACTED

COMPACTED SOIL

DISCHARGE TO THE GROUND

WATER CLEAN

NOTES  
IN THE

**SHALLOW REPAIR (SEE DETAIL):**

**DEEP REPAIR (SEE DETAIL):**

**NOTIFICATION:**

### SHALLOW AND DEEP SINKHOLE/CAVITY MAINTENANCE REPAIR DETAIL



**SOLUTION PIPE REPAIR:**

THERE ARE MANY WAYS IN WHICH A SOLUTION PIPE SINKHOLE MAY BE ADEQUATELY REPAIRED. THE REPAIR WILL VARY DEPENDING ON THE MORPHOLOGY OF THE SINKHOLE. BEFORE REPAIR, ANY TRASH AND ORGANIC DEBRIS SHOULD BE REMOVED FROM THE SINKHOLE. TWO RECOMMENDED REPAIR METHODS ARE LISTED BELOW:

### REPAIR METHOD 1 (FIGURE 8)

IF THE COLLAPSE OCCURS IN A SHALLOW BASIN (<5 DEEP) AND THE VOID(S) IN THE Limestone ARE SMALL, THEN THE SINKHOLE CAN BE REPAIRED BY BACKFILLING WITH MATERIAL THAT IS SIMILAR TO THE MATERIAL IN WHICH THE BASIN WAS CONSTRUCTED. A LOWER-PERMEABILITY MATERIAL, SUCH AS CLAYEY-SAND OR CLAY IS RECOMMENDED. THE MATERIAL SHOULD THEN BE COMPACTED AND THE SINKHOLE REPAIR SHOULD BRING THE SURFACE BACK TO AN ELEVATION WHICH IS SLIGHTLY ABOVE THE ORIGINAL BOTTOM, CREATING A SMALL MOUND.

THIS REPAIR METHOD WILL NOT ASSURE THAT FUTURE SUBSIDENCE WILL BE PREVENTED. THE SINKHOLE MAY NEED TO BE REPAIRED AGAIN AT A LATER TIME IF A SINKHOLE HAS BEEN REPAIRED USING METHOD #1, AND CONTINUES TO SUBSIDE, IT MUST BE REPAIRED USING METHOD #2

### REPAIR METHOD 2 (FIGURE 9)

IF THE COLLAPSE OCCURS IN A DEEPER BASIN (>5' DEEP), A BASIN WITH LARGE VOID(S), OR IN A BASIN THAT IS RECEIVING STORMWATER WHICH CONTAINS A HIGH LEVEL OF COMBUSTION, THE BEST REPAIR METHOD SHOULD BE MORE PERMANENT. THE COLLAPSE SHOULD BE EXCAVATED TO LIMESTONE BEDROCK. THE VOID(S) IN THE BEDROCK SHOULD BE PLUGGED WITH CLEAN CEMENT GROUT (CLEAN LIMESTONE AGGREGATE: 1/3 TO 1/2 THE SIZE OF THE VOID DIAMETER MAY BE INCLUDED IN THE GROUT). MATERIAL CONSISTENT WITH THE BASIN BOTTOM ELEVATION GROUT BACK TO NORMAL.

THE DISTRICT SHOULD BE NOTIFIED TO ANY SINKHOLE DEVELOPMENT WITHIN 48 HOURS OF DISCOVERY AND THE PROPOSED METHOD BY WHICH THE SINKHOLE WILL BE REPAIRED SHOULD BE SUBMITTED TO THE DISTRICT FOR APPROVAL WITHIN 30 DAYS OF FINDING A SOLUTION PIPE SINKHOLE WITHIN A STORMWATER BASIN. THE DISTRICT WILL THEN NOTIFY THE RESPONSIBLE PARTY AS TO THE ACCEPTANCE, DENIAL OR NEED FOR MODIFICATION OF THE REPAIR METHOD.



**BASIN LIMEROCK OUTCROP  
CONSTRUCTION NOTES**

1. IN THE EVENT THAT LIMEROCK OUTCROP IS ENCOUNTERED DURING CONSTRUCTION OF THE RETENTION BASINS THE FOLLOWING TREATMENT SHALL BE PERFORMED. THE LIMEROCK OUTCROP SHALL BE EXCAVATED TO AN ELEVATION OF THREE (3) FEET BELOW THE DESIGN BASIN BOTTOM. THE EXCAVATED AREA SHALL BE BACKFILLED TO THE DESIGN BASIN BOTTOM ELEVATION WITH CLAYEY-SAND/SANDY-CLAY (ASHTO SOIL GROUP A-2) SOILS. A MIXTURE OF THE BACKFILL MATERIAL SHALL BE PLACED IN SIX INCH LIFTS AND ROLLED WITH HEAVY LOADED RUBBER TIERED EQUIPMENT. THE APPLICABLE WATER MANAGEMENT DISTRICT AND APPLICABLE COUNTY PUBLIC WORKS DEPARTMENT SHALL BE NOTIFIED WHEN LIMEROCK OUTCROPS ARE ENCOUNTERED

2. IN THE EVENT THAT ANY KARST FEATURES, SUCH AS SOLUTION CAVITIES, CHIMNEYS, OR SINKHOLES APPEAR IN THE RETENTION BASIN, THE FOLLOWING ACTIONS SHALL BE REQUIRED:

- A. THE ENGINEER OF RECORD, THE ST. JOHN RIVER WATER MANAGEMENT DISTRICT, AND THE MARION COUNTY PUBLIC WORKS DEPARTMENT SHALL BE NOTIFIED WHEN THE FEATURE IS ENCOUNTERED PRIOR TO REMEDIAL ACTION.

- B. A LICENSED GEOTECHNICAL ENGINEERING FIRM SHALL BE RETAINED TO EVALUATE THE SIGNIFICANCE OF THE FEATURE AND TO DETERMINE THE REMEDIAL ACTION NECESSARY.

- C. THE GEOTECHNICAL ENGINEERING FIRM SHALL BE REQUIRED TO MONITOR THE REMEDIAL WORK AND SEND A SUMMARY REPORT UPON REPAIR COMPLETION TO THE ENGINEER OF RECORD THE ST. JOHN RIVER WATER MANAGEMENT DISTRICT, AND THE MARION COUNTY PUBLIC WORKS DEPARTMENT.

This item has been digitally signed and sealed by Jeremy R. Anderson, PE, on the date indicated here.

Printed copies of this document are not considered signed and sealed and the signature must be verified on any electronic copies.

**PALMETTO CAPITAL GROUP**  
1643 WILLIAMSBURG SQUARE  
LAKELAND, FL 33803  
PHONE: (863) 808-1320



COMMON OAK ENGINEERING  
4020 EDGEWATER DRIVE  
ORLANDO, FL 32804  
(407) 951-5915  
CERTIFICATE OF  
AUTHORIZATION: 32644

**PRO FIRESTONE**  
**JOB SITE PLAN**  
STORE #TBD  
AT  
W.C. OF SW 95TH ST  
&  
SW 57TH AVE  
OCALA, FL 33476  
MARION COUNTY

[illegible]

PROJECT # 224.059

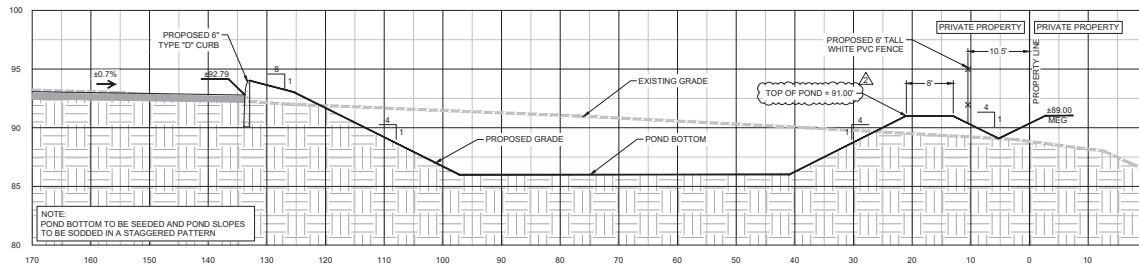
DATE	SHEET	1
04/04/2005		

04/04/2025  
SCALE  
N.T.S.  
C9.2

KARST

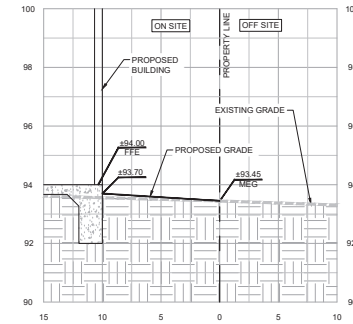
POND 1 STAGING TABLE	
100 YEAR / 24 HR	90.02'
WQTV	86.47'
POND BOTTOM	86.00'
SHWE	82.00'
BASE OF AQUIFER	70.00'

LEGEND		
	EXISTING EARTH	
	CONCRETE	
	ASPHALT PAVEMENT	



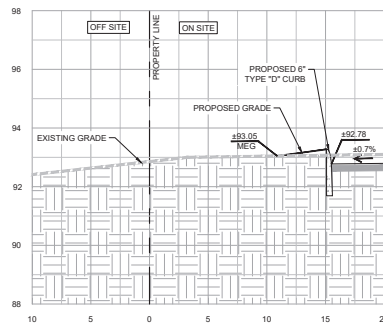
**PROFILE A-A (DRIVEWAY AND POND 1)**

SCALE: 1" IS 5' (VERTICAL) 1" IS 10' (HORIZONTAL)  
NOTE: ELEVATIONS BASED NAVD 88 VERTICAL DATUM



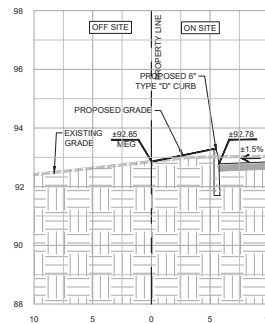
**PROFILE B-B (WEST PROPERTY LINE)**

SCALE: 1" IS 2' (VERTICAL) 1" IS 5' (HORIZONTAL)  
NOTE: ELEVATIONS BASED NAVD 88 VERTICAL DATUM



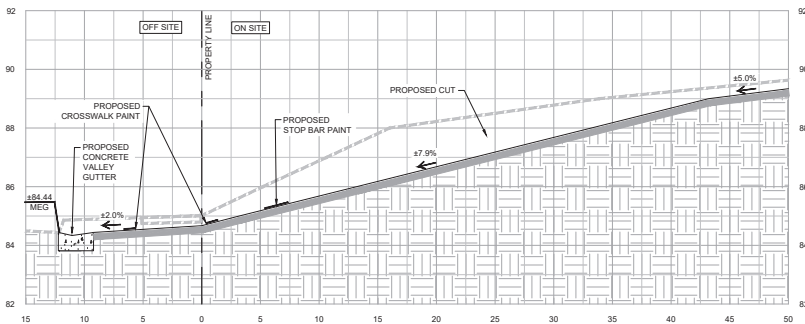
**PROFILE C-C (SOUTH PROPERTY LINE)**

SCALE: 1" IS 2' (VERTICAL) 1" IS 5' (HORIZONTAL)  
NOTE: ELEVATIONS BASED NAVD 88 VERTICAL DATUM



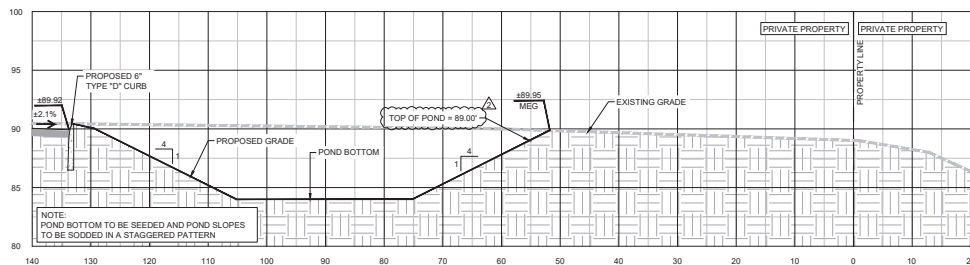
**PROFILE D-D (EAST PROPERTY LINE)**

SCALE: 1" IS 2' (VERTICAL) 1" IS 5' (HORIZONTAL)  
NOTE: ELEVATIONS BASED NAVD 88 VERTICAL DATUM



**PROFILE E-E (SOUTH ACCESS RD DRIVEWAY CONNECTION TO SW 57TH AVE)**

SCALE: 1" IS 2' (VERTICAL) 1" IS 5' (HORIZONTAL)  
NOTE: ELEVATIONS BASED NAVD 88 VERTICAL DATUM



**PROFILE F-F (POND 2)**

SCALE: 1" IS 5' (VERTICAL) 1" IS 10' (HORIZONTAL)  
NOTE: ELEVATIONS BASED NAVD 88 VERTICAL DATUM

POND 2 STAGING TABLE	
100 YEAR / 24 HR	85.56'
WQTV	84.35'
POND BOTTOM	84.00'
SHWE	81.50'
BASE OF AQUIFER	75.00'

PALMETTO CAPITAL GROUP  
1643 WILLIAMSBOURG SQUARE  
LAKELAND, FL 33803  
PHONE: (863) 808-1520



COMMON OAK ENGINEERING  
400 EGGWATER DRIVE  
ORLANDO, FL 32804  
(407) 961-9915  
AUTHORIZATION: 32844

BSRO FIRESTONE  
MAJOR SITE PLAN  
STORE #780  
NWC OF SW 99TH ST  
&  
SW 14th AVE  
OCALA, FL 33476  
MARION COUNTY

DATE: 04/04/2025  
DRAWN: J.R.A.  
CHECKED: J.R.A.  
APPROVED: J.R.A.

DATE: 04/04/2025  
DRAWN: J.R.A.  
CHECKED: J.R.A.  
APPROVED: J.R.A.

DATE: 04/04/2025  
DRAWN: J.R.A.  
CHECKED: J.R.A.  
APPROVED: J.R.A.

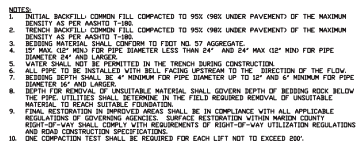
DATE: 04/04/2025  
DRAWN: J.R.A.  
CHECKED: J.R.A.  
APPROVED: J.R.A.

DATE: 04/04/2025  
DRAWN: J.R.A.  
CHECKED: J.R.A.  
APPROVED: J.R.A.

DATE: 04/04/2025  
DRAWN: J.R.A.  
CHECKED: J.R.A.  
APPROVED: J.R.A.

Jeremy R. Anderson, State of Florida, Professional Engineer, License No. 71636  
This item has been digitally signed and sealed by Jeremy R. Anderson, PE, on the date indicated here.  
Printed copies of this document are not considered signed and sealed and the signature must be verified on any electronic copies.

PROJECT # 224.059  
SHEET C9.3  
PROFILES



- NOTES:
1. INITIAL BACKFILL AND HAUNCHING SHALL COMPOSE COMMON FILL COMPACTED TO 95% (95% UNDER PAVEMENT) OF THE MAXIMUM DENSITY AS PER ASPHOTO T-99.
  2. EXISTING TRENCHES COMPACTED TO 95% (95% UNDER PAVEMENT) OF THE MAXIMUM DENSITY AS PER ASPHOTO T-99.
  3. ALL TRENCHES SHALL BE BACKFILLED WITH COMMON FILL OF BEDDING ROCK IN ACCORDANCE WITH BEDDING AND TRENCHING 1. DETAIL MAY BE REQUIRED AS DIRECTED BY NCU.
  4. 12" MAX 1/2" MIN D FOR PIPE DIAMETER SMALLER THAN 24" AND 24" MAX 1/2" MIN D FOR PIPE DIAMETER 24" AND LARGER.
  5. WATER SHALL NOT BE PERMITTED IN THE TRENCH DURING CONSTRUCTION.
  6. ALL TRENCHES SHALL BE BACKFILLED WITH BEDDING ROCK AND THE DIRECTION OF THE FLOW OF WATER SHALL BE RESTORED TO ITS ORIGINAL DIRECTION.
  7. FINAL RESTORATION IN IMPROVED AREAS SHALL BE IN COMPLIANCE WITH ALL APPLICABLE REGULATIONS OF GOVERNING AGENCIES. SURFACE RESTORATION WITHIN HARBOR CITY SHALL BE IN COMPLIANCE WITH ALL APPLICABLE REGULATIONS OF THE CITY OF HARBOR CITY AND ALL APPLICABLE REGULATIONS AND ROAD CONSTRUCTION SPECIFICATIONS.
  8. ALL TRENCHES SHALL BE TESTED TO 150 PSI FOR EACH FEET MIN TO EXCEED 200 PSI.

The diagram illustrates the water cycle and water treatment process. It consists of four circular stages arranged in a square, connected by arrows indicating a clockwise flow:

- POTABLE WATER** (top left): A circle containing a grid of small squares, representing clean water available for use.
- RECLAIMED WATER** (top right): A circle containing a grid of small squares, representing water that has been treated and is ready for reuse.
- WATER** (bottom left): A circle containing a grid of small squares, representing water that has been used and is now wastewater.
- SEWER** (bottom right): A circle containing a grid of small squares, representing wastewater being collected and transported for treatment.

Arrows show the flow from Potable Water to Reclaimed Water, then to Water, then to Sewer, and finally back to Potable Water, completing the cycle.

**NOTES:**

1. PVC PIPE SHALL REQUIRE INSULATED METALLIC LOCATING WIRE (10 GAUGE COPPER) CAPABLE OF DETECTION BY A CABLE LOCATOR AND SHALL BE BURIED ON TOP OF THE PIPE.
2. LOCATING WIRE SHALL TERMINATE AT EACH VALVE BOX AND BE CAPABLE OF EXTENDING 12" ABOVE TOP OF BOX IN SUCH A MANNER SO AS NOT TO INTERFERE WITH VALVE OPERATION PER UL.
3. ALL WIRE CONNECTIONS SHALL BE SPLICED TOGETHER USING WATERTIGHT WIRE NUTS.
4. FOR HORIZONTAL DIRECTIONAL DRILLING, UTILIZE 2 LOCATING WIRES EACH WITH A BREAK LOAD OF 300 POUNDS.
5. DEPTH OF EACH WIRE SHALL BE 1" ABOVE THE CENTERLINE OF THE PIPE.

Diagram illustrating the components of the Valve Box Lid assembly:

- VALVE BOX LID
- STANDARD VALVE BOX
- DUCTILE IRON
- ALIGNMENT RING
- SLIDING ADJUSTER

- NOTES:
1. MARKERS ARE REQUIRED WHEN UTILITY MAIN IS LOCATED DEEPER THAN 30 FEET FROM EDGE OF PAVEMENT OR IN AN EASEMENT NOT ADJACENT TO THE RIGHT-OF-WAY.
  2. MARKERS SHALL BE 4" DIAMETER SCH40 OR 3/8" PIVOT BLUE FOR WATER; GREEN FOR WASTEWATER; AND PANTONE PURPLE 322C FOR RECLAIMED WATER.
  3. MARKERS SHALL BE PLACED AT ALL VALVES THAT MEET NOTE 1 EXCEPT WATER VALVES NEAR FIRE HYDRANTS.
  4. ADDITIONAL MARKERS SHALL BE INSTALLED AS NEEDED SO THAT THE DISTANCE BETWEEN MARKERS DOES NOT EXCEED 1,000 FEET.

24" DIAMETER CONCRETE PAD TIP EACH VALVE BOX

LOCATE WIRE ACCESS

TOP FLUSH WITH FINISHED GRADE

BASE ZZZ

VALVE BOX AND COVER (TYP)

IDENTIFICATION DISC (SEE NOTE 1 AND DETAILS BELOW)

OUTSIDE PAVEMENT

INSIDE PAVEMENT

3" MIN

MANUFACTURER AND SIZE OF TYPE OF VALVE

UTILITY

DIRECTION AND NUMBER OF CURRENT FLOW

RESTRAINED JOINT

LETTERING TO BE MACHINE ENGRAVED WITH 1/4" TO 3/8" CAP. LETTERS

ALL (U) XXXX XXXX WATER 1-200 1-200

IDENTIFICATION DISC - EXAMPLE

3" MIN

7/8" MIN

2" MIN

"THEFT PROOF" ANCHOR PIN

DISC TO BE EMBEDDED IN OUTSIDE PAVEMENT

DISC TO BE HANGING IN THE BOX ANCHORED TO THE LOCATING WIRE

INSIDE PAVEMENT

3" MIN

1/4"

DATE  
DATE  
DATE  
DATE

- PALMETTO CAPITAL GROUP**  
1643 WILLIAMSBURG SQUARE  
JACKSONVILLE, FL 32203  
PHONE: (904) 808-1320



COMMON OAK ENGINEERING  
4020 EDGEWATER DRIVE  
ORLANDO, FL 32804  
(407) 951-5915  
CERTIFICATE OF  
AUTHORIZATION: 32844

**PRO FIRESTONE**  
STORE #TBD  
AT  
NWC OF SW 95TH  
&  
SW 57TH AVE  
OCALA, FL 33476  
MARION COUNTY

[illegible]

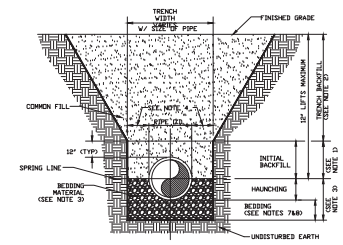
ENGINEER'S NAME &amp; REG. NO.



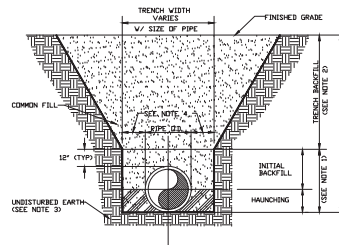
JEREMY R. ANDERSON, P.E.  
P.E. LICENSE NO. 71636  
PROJECT # 224 059

DATE	SHEET
09/25/2024	C10
SCALE	
NTS	

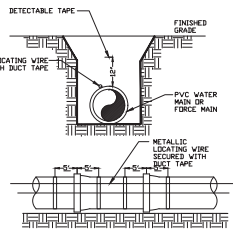
N.T.S.	
UTILITY DETAILS	



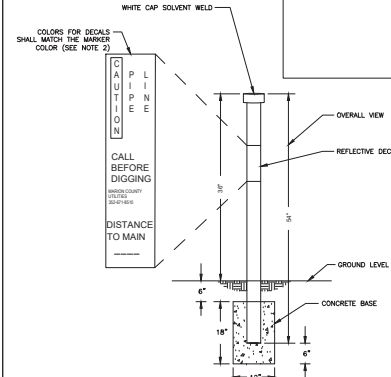
- NOTES:**
1. INITIAL BACKFILL, COMMON FILL COMPACTED TO 95% OMC UNDER PAVEMENTS OF THE MAXIMUM DENSITY AS PER AASHTO T-99.
  2. TRENCH BACKFILL, COMMON FILL COMPACTED TO 95% OMC UNDER PAVEMENTS OF THE MAXIMUM DENSITY AS PER AASHTO T-99.
  3. BEDDING MATERIAL SHALL CONFORM TO FIRST NO. 57 AGGREGATE.
  4. 12" MAX. 12" MIN. FOR PIPE DIAMETER LESS THAN 24" AND 24" MAX. 12" MIN. FOR PIPE DIAMETER 24" AND LARGER.
  5. WATER SHALL NOT BE PERMITTED IN THE TRENCH DURING CONSTRUCTION.
  6. ALL PIPE TO BE INSTALLED WITH BELL FACING UPSTREAM TO THE DIRECTION OF THE FLOW.
  7. BEDDING DEPTH SHALL BE 4" MINIMUM FOR PIPE DIAMETER UP TO 12" AND 6" MINIMUM FOR PIPE DIAMETER 12" AND LARGER.
  8. THE PIPE UTILITIES SHALL EXTEND TO THE DIRECTION OF THE FLOW.
  9. FINAL RESTORATION SHALL BE IN COMPLIANCE WITH ALL APPLICABLE REGULATIONS OF GOVERNING AGENCIES. SURFACE RESTORATION WITHIN MARION COUNTY RIGHT-OF-WAY SHALL COMPLY WITH REQUIREMENTS OF RIGHT-OF-WAY UTILIZATION REGULATIONS AND ROAD CONSTRUCTION SPECIFICATIONS.
  10. ONE COMPACTION TEST SHALL BE REQUIRED FOR EACH LIFT NOT TO EXCEED 80'.



- NOTES:**
1. INITIAL BACKFILL AND HAUNCHING SELECT COMMON FILL COMPACTED TO 95% OMC UNDER PAVEMENTS OF THE MAXIMUM DENSITY AS PER AASHTO T-99.
  2. TRENCH BACKFILL, COMMON FILL COMPACTED TO 95% OMC UNDER PAVEMENTS OF THE MAXIMUM DENSITY AS PER AASHTO T-99.
  3. PIPE BEDDING UTILIZING SELECT COMMON FILL OR BEDDING ROCK IN ACCORDANCE WITH BEDDING AND TRENCHING. 1. DETAIL MAY BE REQUIRED AS DIRECTED BY M.C.I.
  4. 12" MAX. 12" MIN. FOR PIPE DIAMETER LESS THAN 24" AND 24" MAX. 12" MIN. FOR PIPE DIAMETER 24" AND LARGER.
  5. WATER SHALL NOT BE PERMITTED IN THE TRENCH DURING CONSTRUCTION.
  6. ALL PIPE TO BE INSTALLED WITH BELL FACING UPSTREAM TO THE DIRECTION OF THE FLOW.
  7. FINAL RESTORATION SHALL BE IN COMPLIANCE WITH ALL APPLICABLE REGULATIONS OF GOVERNING AGENCIES. SURFACE RESTORATION WITHIN MARION COUNTY RIGHT-OF-WAY SHALL COMPLY WITH REQUIREMENTS OF RIGHT-OF-WAY UTILIZATION REGULATIONS AND ROAD CONSTRUCTION SPECIFICATIONS.
  8. ONE COMPACTION TEST SHALL BE REQUIRED FOR EACH LIFT NOT TO EXCEED 80'.



- NOTES:**
1. PVC PIPE SHALL REQUIRE INSULATED METALLIC LOCATING WIRE (10 GAUGE COPPER) CAPABLE OF DETECTION BY A CABLE LOCATOR AND SHALL BE BURIED ON TOP OF THE PIPE.
  2. LOCATING WIRE SHALL TERMINATE AT EACH VALVE BOX AND BE CAPABLE OF EXTENDING 12" ABOVE TOP OF BOX IN SUCH A MANNER SO AS NOT TO INTERFERE WITH VALVE OPERATION PER UT 103.
  3. ALL WIRE CONNECTIONS SHALL BE SPLICED TOGETHER USING WATERTIGHT WIRE NUTS.
  4. FOR HORIZONTAL DIRECTIONAL DRILLING, UTILIZE 2 LOCATING WIRES EACH WITH A BREAK LOAD OF 5500 POUNDS.
  5. DETECTABLE TAPE SHALL BE 1" ABOVE THE CENTERLINE OF THE PIPE.



- NOTES:**
1. MARKERS ARE REQUIRED WHEN UTILITY MAIN IS LOCATED OVER 30 FEET FROM EDGE OF PAVEMENT OR IN AN EASEMENT NOT ADJACENT TO THE RIGHT-OF-WAY.
  2. MARKERS SHALL BE 4" DIAMETER SCHED 40 DRB PVD BLUE FOR WATER, GREEN FOR WASTEWATER, AND PANTONE PANTONE 285C FOR RECLAIMED WATER.
  3. MARKERS SHALL BE PLACED AT ALL VALVES THAT MEET NOTE 1 EXCEPT WATER VALVES NEAR FIRE HYDRANTS.
  4. ADDITIONAL MARKERS SHALL BE INSTALLED AS NEEDED SO THAT THE DISTANCE BETWEEN MARKERS DOES NOT EXCEED 1000 FEET.

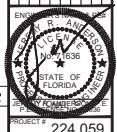
**PALMETTO CAPITAL GROUP**  
1643 WILLIAMSBURG SQUARE  
LAKELAND, FL 33803  
PHONE: (863) 806-1520



**COMMONMARK ENGINEERING, INC.**  
4000 EAGLEWATER DRIVE  
ORLANDO, FL 32804  
(407) 961-0515  
DESIGN-BUILD OR AUTHORIZATION: 32844

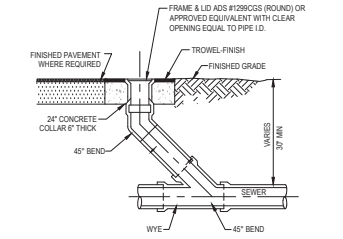
**BSRO FIRESTONE**  
MAJOR SITE PLAN  
STORE FRID  
NWC OF SW 98TH ST  
&  
SW 1/4 AVE  
OCALA, FL 33476  
MARION COUNTY

NO.	REVISION/ISSUE	DATE	BY	CHKD	APP'D
1					
2					
3					
4					
5					
6					
7					
8					
9					
10					

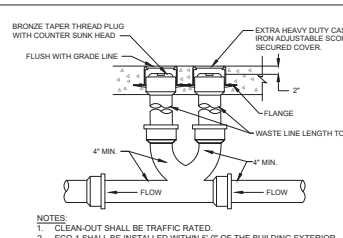


PROJECT # **224.059**  
DATE **04/04/2025**  
SCALE **N.T.S.**  
SHEET **C10**  
UTILITY DETAILS

**MARION COUNTY**  
M.C.E. EFFECTIVE 04/13/2003  
REVISION # 2  
**BEDDING AND TRENCHING 1**  
UT 102

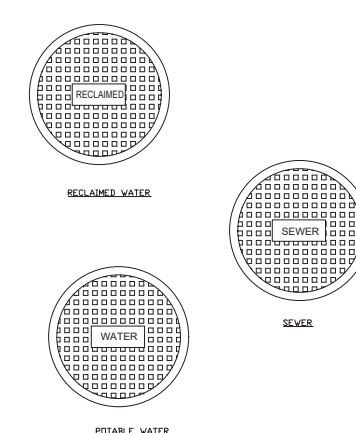


**1 SANITARY SEWER CLEANOUT NTS**



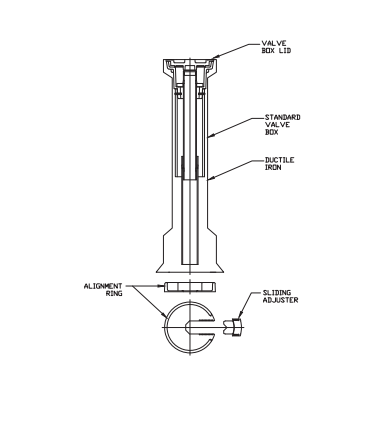
**2 2-WAY CLEANOUT NTS**

**MARION COUNTY**  
M.C.E. EFFECTIVE 04/13/2003  
REVISION # 2  
**BEDDING AND TRENCHING 2**  
UT 103



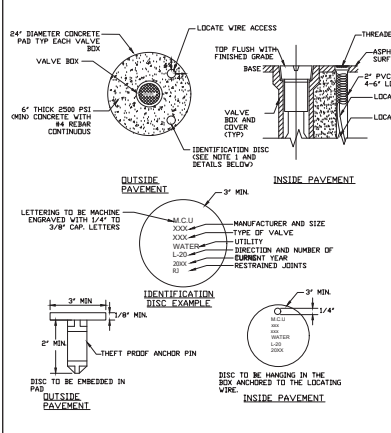
**MARION COUNTY**  
M.C.E. EFFECTIVE 04/13/2003  
REVISION # 1  
**TYPICAL VALVE BOX COVER**  
UT 110

**MARION COUNTY**  
M.C.E. EFFECTIVE 04/13/2003  
REVISION # 2  
**PIPE LOCATING WIRE AND DETECTABLE TAPE**  
UT 104



**MARION COUNTY**  
M.C.E. EFFECTIVE 04/13/2003  
REVISION # 1  
**SEALED VALVE BOX, ADJUSTABLE**  
UT 111

**MARION COUNTY**  
M.C.E. EFFECTIVE 04/13/2003  
REVISION # 2  
**UTILITY MAIN MARKER**  
UT 109



**MARION COUNTY**  
M.C.E. EFFECTIVE 04/13/2003  
REVISION # 1  
**VALVE BOX PAD**  
UT 112

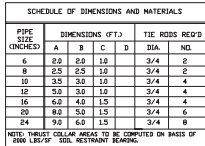
Jeremy R. Anderson, State of Florida, Professional Engineer, License No. 71636  
This item has been digitally signed and sealed by Jeremy R. Anderson, P.E., on the date indicated here.  
Printed copies of this document are not considered signed and sealed and the signature must be verified on any electronic copies.




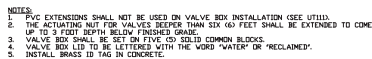
	MCBCC EFFECTIVE 04/13/2023
	REVISION # NA



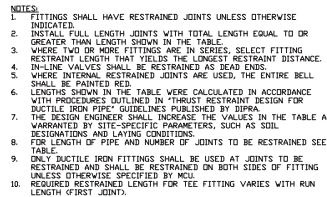
	MCBCC EFFECTIVE 04/13/2023
	REVISION # NA



	MCBCC EFFECTIVE 04/13/2023
	REVISION # NA




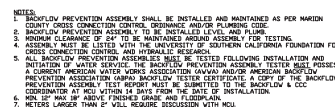
	HCBCC EFFECTIVE 04/13/2023
	REVISION # 2



REQUIRED RETAINED LENGTH ON MAIN MAN										REQUIRED RETAINED LENGTH ON THE BRANCH									
Bend Type		4"		6"		8"		10"		TEE FITTING		Flare Length		Standard of Run		Flare Length		Standard of Run	
Angle	Orientation	1"	2"	3"	4"	5"	6"	8"	9"	1"	2"	3"	4"	5"	6"	8"	9"	10"	12"
11-1/4°	WV	2	3	4	5	6	8	9	9	10"	12"	10"	12"	10"	12"	10"	12"	10"	12"
	SW	2	3	4	5	6	8	9	9	10"	12"	83	85	88	90	42	22	4	0
15-1/2°	WV	4	6	7	9	10	12	15	17	10"	12"	100	102	105	108	53	28	6	0
	SW	4	6	7	9	10	12	15	17	10"	12"	110	112	115	118	58	31	8	0
21-1/2°	WV	7	11	13	17	21	27	31	35	10"	12"	110	112	115	118	60	34	8	0
	SW	7	11	13	17	21	27	31	35	10"	12"	120	122	125	128	65	36	10	0
40°	WV	8	11	13	17	21	25	30	35	10"	12"	110	112	115	118	60	34	8	0
	SW	8	11	13	17	21	25	30	35	10"	12"	120	122	125	128	65	36	10	0
60°	WV	10	15	20	25	30	35	40	45	10"	12"	110	112	115	118	60	34	8	0
	SW	10	15	20	25	30	35	40	45	10"	12"	120	122	125	128	65	36	10	0
80°	WV	12	18	25	32	40	48	55	62	10"	12"	110	112	115	118	60	34	8	0
	SW	12	18	25	32	40	48	55	62	10"	12"	120	122	125	128	65	36	10	0
90°	WV	12	18	25	32	40	48	55	62	10"	12"	110	112	115	118	60	34	8	0
	SW	12	18	25	32	40	48	55	62	10"	12"	120	122	125	128	65	36	10	0
Minimum Design Criteria										REQUIRED RETAINED LENGTH ON LARGER PIPE									
Bending Type: 4										REQUIRED FITTING									
Soil Factor: 1.5										Pipe Length (ft)									
Type: Sand-Silt										1"									
Location: (First Joint) 10 ft										2"									
										3"									
										4"									

FORCE MAIN:  
PRESSURE: 100 PSI.  
DEPTH OF COVER: 4.0  
ft.

	MCBCC EFFECTIVE 04/13/2023	
	REVISION # NA	



BACKFLOW PREVENTION ASSEMBLY MUST BE INSTALLED AND MAINTAINED AS PER NATION CITY CROSS CONNECTION CONTROL ORDINANCE AND/OR PLUMBING CODE.

BACKFLOW PREVENTION ASSEMBLY MUST BE INSTALLED AND MAINTAINED AS PER NATION CITY CROSS CONNECTION CONTROL ORDINANCE AND/OR PLUMBING CODE.

MINIMUM CLEARANCE OF 24" TO BE MAINTAINED AROUND ASSEMBLY FOR TESTING.

ASSEMBLY MUST BE LISTED WITH THE UNIVERSITY OF SOUTHERN CALIFORNIA FOUNDATION FOR WATER TECHNOLOGIES.

ALL BACKFLOW PREVENTION ASSEMBLIES MUST BE TESTED FOLLOWING INSTALLATION AND INITIATION OF WATER SERVICE. MUST BE SUBMITTED AS EVIDENCE TO THE CITY OF NATION CITY AMERICAN WATER WORKS ASSOCIATION (AWWA) AND/OR AMERICAN BACKFLOW PREVENTION ASSOCIATION (ABFP) BACKFLOW TEST CERTIFICATE. A COPY OF THE BACKFLOW PREVENTION ASSEMBLY TEST CERTIFICATE MUST BE SUBMITTED TO THE CITY OF NATION CITY.

COORDINATOR AT MC WITHIN 14 DAYS FROM THE DATE OF INSTALLATION.

MIN 12" MAX 18" ABOVE FINISHED GRADE AND FLOODPLAIN.

1 FEETERS DEEPER THAN 18" IF IN FLOODPLAIN.

1 FEETERS DEEPER THAN 18" IF IN FLOODPLAIN.



ALTERNATE CONFIGURATION

NOTES:

1. BONNET COLORS SHALL BE IN ACCORDANCE WITH SEC. 6102-G.
2. HYDRANT SHALL BE 1' INSIDE OF RIGHT-OF-WAY, WHEN POSSIBLE.
3. BLUE REFLECTOR SHALL BE PLACED IN THE MIDDLE OF THE ADJACENT TRAVEL LANE.
4. RADIUS OF CLEAR SPACE AROUND THE FIRE HYDRANT SHALL BE IN ACCORDANCE WITH STANDARDS (NFPA 1 SEC. 10.5.7, AS AMENDED).

**PALMETTO CAPITAL GROUP**  
1643 WILLIAMSBURG SQUARE  
JACKSONVILLE, FL 32202  
PHONE: (904) 808-1320



COMMON OAK ENGINEERING  
4020 EDGEWATER DRIVE  
ORLANDO, FL 32804  
(407) 951-5915  
CERTIFICATE OF  
AUTHORIZATION: 32644

**PRO FIRESTONE**  
STORE #TBD  
AT  
NWC OF SW 95TH  
&  
SW 57TH AVE  
OCALA, FL 33476

[illegible]

ENGINEER'S NAME &amp; P. NO. \_\_\_\_\_



PROJECT # 334.05

DATE	SHEET
06/25/2004	1

Jeremy R. Anderson, State of Florida, Professional Engineer, License No. 71636

This item has been digitally signed and sealed by Jeremy R. Anderson, PE, on the date indicated here.

	N.T.S.	
	UTILITY DETAIL	

Printed copies of this document are not considered signed and sealed and the signature must be verified on any electronic copies.

\_\_\_\_\_