

"NOTICE: There may be additional restrictions that are not recorded on this plat that may be found in the public records of this county."

SILVER SPRINGS SHORES

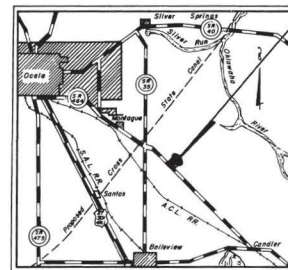
MARION COUNTY, FLORIDA

UNIT NO. 7

ANNULLED AND / OR VACATED, IN PART OR WHOLE BY BOARD OF COUNTY COMMISSIONERS RESOLUTION NUMBER 96-18 RECORDED IN OFFICIAL RECORD BOOK 773 PAGE 326

ANNULLED AND / OR VACATED, IN PART OR WHOLE BY BOARD OF COUNTY COMMISSIONERS RESOLUTION NUMBER 76-18 RECORDED IN OFFICIAL RECORD BOOK 773 PAGE 326

SILVER SPRINGS SHORES UNIT NO. 7



Location Map

DESCRIPTION:

All that certain tract or parcel of land lying and being situate in parts of Sections 4, 5, 8 and 9, in Township 16 South, Range 23 East, County of Marion, State of Florida, being more fully and particularly described as follows:

BEGINNING at Y=1,739,749.78, X=494,071.12, the GEODETIC position of a concrete monument at the intersection of the West right of way line of Bahia Road with the North right of way line of Midway Road, said POINT OF BEGINNING also being the Northernmost point of Silver Springs Shores, Unit No. 8, as recorded in Plat Book "J" on Page 10 of the Public Records of Marion County, Florida; thence S 01° 32' 29" W 100.01 feet to Y=1,739,649.80, X=494,068.43; thence N 89° 12' 13" W a distance of 1699.70 feet to Y=1,739,673.43, X=492,368.89, the point of curvature of a curve concave Southeastly, having a central angle of 43° 35' 26" and a radius of 1292.92 feet; thence along the arc of said curve a distance of 983.65 feet to Y=1,739,329.38, X=491,472.56, the point of tangency of said curve; thence S 47° 12' 21" W a distance of 286.05 feet to Y=1,739,135.05, X=491,262.66, on the Northeastly right of way line of State Road No. 464 (locally known as Maricamp Road) said point being 50.00 feet from and at right angles to the centerline of said road; thence N 42° 47' 39" W along said right of way line, a distance of 50.00 feet to Y=1,739,171.79, X=491,228.74; thence continue along said right of way line N 42° 42' 52" W a distance of 4781.19 feet to Y=1,742,684.74, X=487,985.45, the point of intersection of said right of way line of State Road No. 464 with the Northwestly right of way line of Pine Road; thence N 47° 43' 38" E a distance of 1370.83 feet to Y=1,743,615.37, X=488,993.98, the point of curvature of a curve concave Northwestly, having a central angle of 25° 58' 45" and a radius of 3769.72 feet; thence along the arc of said curve, a distance of 1709.27 feet to Y=1,745,016.10, X=489,945.85, the point of tangency of said curve; thence N 21° 15' 53" E a distance of 345.00 feet to Y=1,745,337.61, X=490,070.98; thence S 68° 44' 07" E a distance of 100.00 feet to Y=1,745,301.34, X=490,164.17; thence S 21° 15' 53" W a distance of 25.00 feet to Y=1,745,278.04, X=490,155.10, on the North right of way of Bahia Road; thence along the said North right of way line S 69° 45' 28" E a distance of 1029.94 feet to Y=1,744,904.88, X=491,115.06, the point of curvature of a curve concave Southwestly, having a central angle of 29° 54' 46" and a radius of 3869.70 feet; thence along the arc of said curve a distance of 2020.28 feet to Y=1,743,725.24, X=492,726.93, the point of tangency of said curve; thence S 38° 50' 42" E a distance of 969.93 feet to Y=1,742,969.81, X=493,335.29, the point of curvature of a curve concave Westerly, having a central angle of 40° 23' 11" and a radius of 3869.73 feet; thence along the arc of said curve a distance of 2727.67 feet to Y=1,740,438.57, X=494,189.69, the point of tangency of said curve; thence S 01° 32' 29" W a distance of 690.43 feet to Y=1,739,749.39, X=494,171.12, thence N 89° 12' 13" W a distance of 100.00 feet to the POINT OF BEGINNING.

The above described lands being subject to a 285 feet wide easement of Florida Power Corporation.

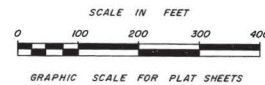
NOTE: All easements shown are reserved for the perpetual use of construction and maintenance of drainage facilities and all utilities. In addition to the easements specifically shown hereon, there is also reserved a 7.5 feet easement along all front, sides, and rear lot lines for the same purposes.

Coordinates refer to Mercator Projection, Florida West Zone.

All cut-de-sac radii are 50.00 feet unless otherwise shown.

All lot corners at street intersections have a 25.00 feet radius unless otherwise shown. Distance shown extend to the point of intersection of street lines, but lot ownership extend only to the curve.

Q= 4"x4" Concrete Permanent Reference Monuments



STATE OF FLORIDA
COUNTY OF MARION

The undersigned corporation which is duly organized under the laws of the State of Florida and the owner of the real estate included in this plat does hereby authorize the same to be recorded in the public records of Marion County, Florida, and does hereby dedicate to the public forever the roads, streets and water retention areas as shown hereon for the benefit of the public.

Witness whereof said corporation has caused its seal to be affixed by the undersigned officials, duly authorized by the Board of Directors, this 3rd day of July A.D. 1969. Signed, sealed, and delivered in the presence of:

Clayde B. Larramore
Witness
J.W. Jernigan
Witness

SILVER SPRINGS SHORES, INC.

Clayde B. Larramore
Clayde B. Larramore, Vice President
Thelma Patten
Thelma Patten, Assistant Secretary



STATE OF FLORIDA
COUNTY OF MARION

Before me this day personally appeared Clyde B. Larramore and Thelma Patten, Vice President and Assistant Secretary, respectively, of Silver Springs Shores, Inc., a Florida Corporation and acknowledged before me that they executed the dedication hereon shown for the uses and purposes therein stated on behalf of said Silver Springs Shores, Inc., as its free act and deed and have been duly authorized so to do by the Board of Directors thereof.

Witness my hand and official seal at Ocala, County of Marion, State of Florida, this 3rd day of July A.D. 1969.

My commission expires: Dec 26, 1971

Stephen May
Notary Public, State of Florida at large



I, J.W. Jernigan, of the Marion Engineering Associates, Inc., maker of this plat, do hereby certify that it is a correct representation of the land platted and that permanent reference monuments have been placed thereon as called for under Chapter 177, Florida Statutes.

J.W. Jernigan
J.W. Jernigan, Registered Professional Engineer
Certificate No. 574, State of Florida



This certifies that this plat was presented to the Board of County Commissioners of Marion County, Florida, and approved by them for record on the 8th day of July A.D. 1969.

Attest: *John F. Nicholson*
Clerk of the Circuit Court

Paul W. Males
Chairman, Board of County Commissioners

I, John F. Nicholson, Clerk of the Circuit Court for Marion County, Florida, do hereby certify that this foregoing plat conforms to the provisions of Chapter 177, Florida Statutes, was filed in my office for record on the 9th day of July A.D. 1969 and recorded in the public records of said County on the 9th day of July A.D. 1969 in plat book J, pages 30-38.

John F. Nicholson
Clerk of the Circuit Court

"As a condition precedent to the recordation of this plat in the Public records of Marion County, Florida, the undersigned owners of this subdivision do hereby guarantee to each and every person, firm, copartnership, or corporation, their heirs, successors, and assigns, who shall purchase a lot or lots in said subdivision from said owners, that said owners shall within 90 months of the date of the sale thereof fully comply with each and every regulation of the Board of County Commissioners of Marion County, Florida, covering subdivisions in effect at the time of the filing of this final plat in so far as the same affects a lot or lots sold. Time of such performance being of the essence, which said guarantee shall be a part of each deed of conveyance or contract of sale covering lots in said subdivision, executed by said owners to the same extent and purpose as if said guarantee were incorporated verbatim in each said conveyance or contract of sale."

SILVER SPRINGS SHORES, INC.

Clayde B. Larramore
Clayde B. Larramore, Vice President

Thelma Patten
Thelma Patten, Assistant Secretary



"NOTICE: There may be additional restrictions that are not recorded on this plat that may be found in the public records of this county."

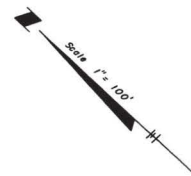
SILVER SPRINGS SHORES

MARION COUNTY, FLORIDA

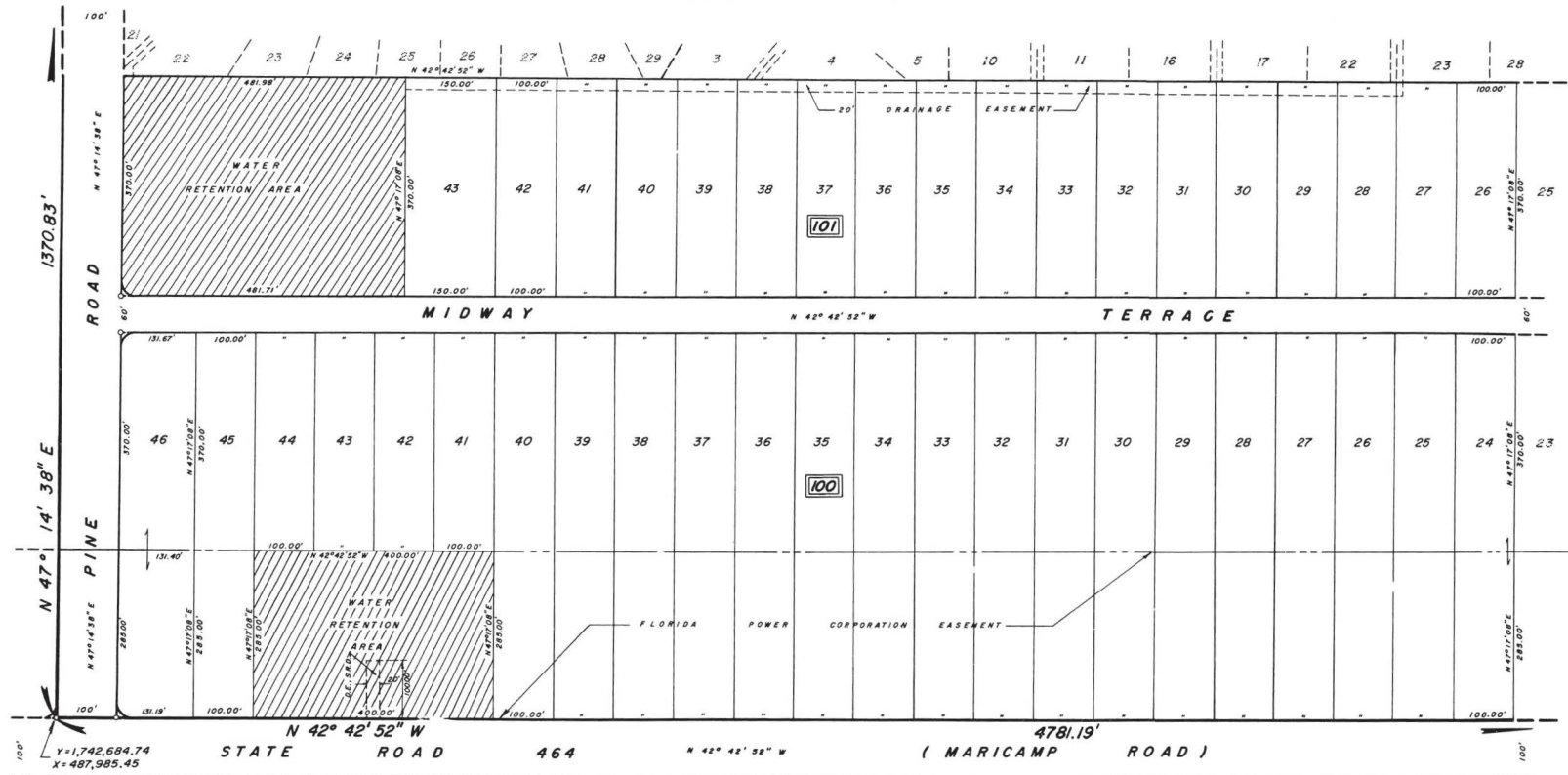
UNIT NO. 7

APPROVED AND RECORDED IN PART BY BOARD OF COUNTY COMMISSION RESOLUTION NUMBER 2000-113, PAGE 1316

APPROVED AND RECORDED IN PART BY BOARD OF COUNTY COMMISSION RESOLUTION NUMBER 2000-113, PAGE 1316



JOINS SHEET NO. 6



JOINS SHEET NO. 3

"NOTICE: There may be additional restrictions that are not recorded on this plat that may be found in the public records of this county."

SILVER SPRINGS SHORES

MARION COUNTY, FLORIDA

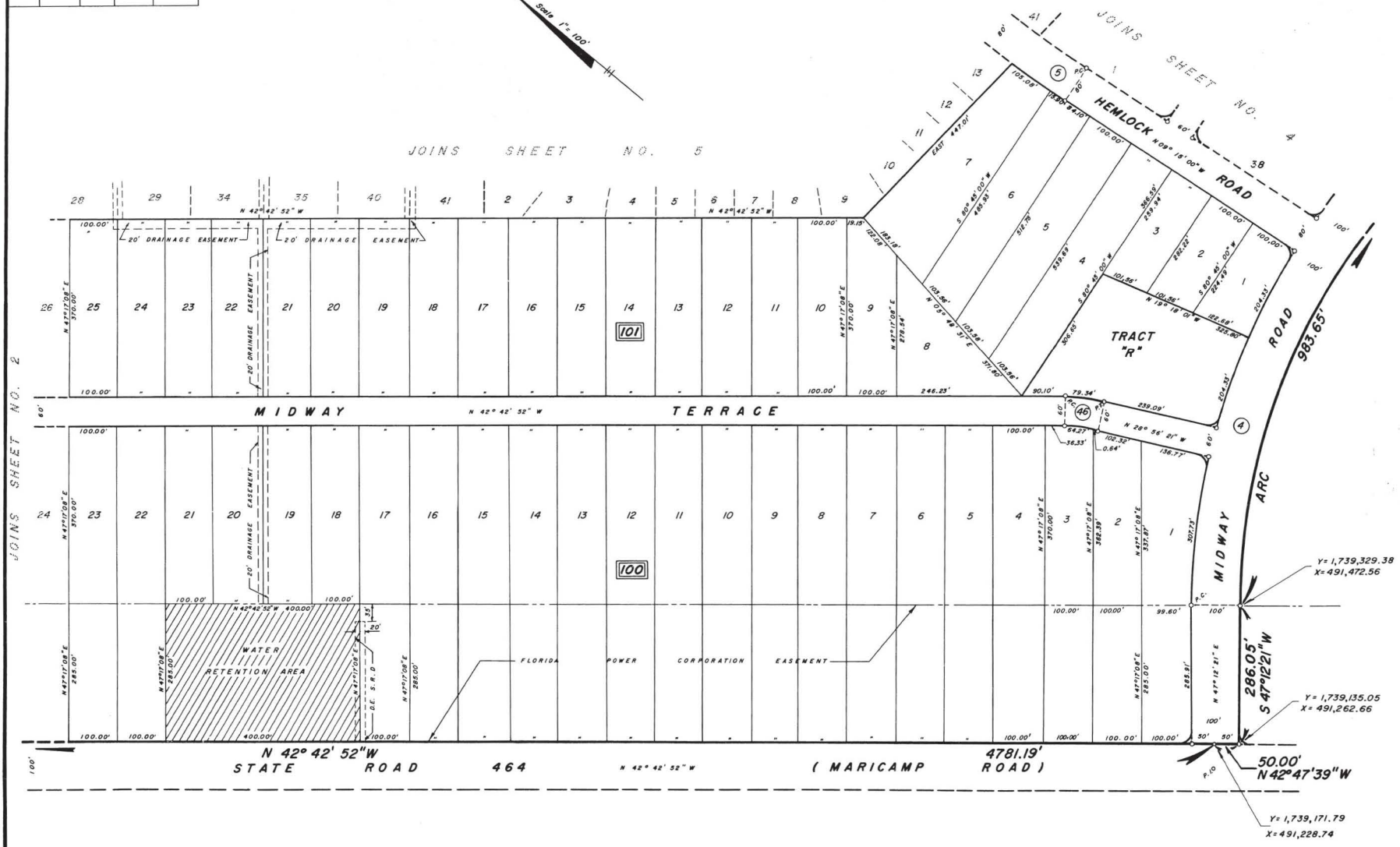
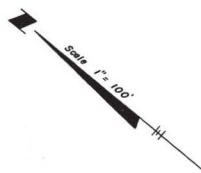
UNIT NO. 7

ANNULLED AND / OR VACATED, IN PART OR WHOLE, BY BOARD OF COUNTY COMMISSION RESOLUTION NUMBER RECORDED IN OFFICIAL RECORD BOOK 1773, PAGE 126.

ANNULLED AND / OR VACATED, IN PART OR WHOLE, BY BOARD OF COUNTY COMMISSION RESOLUTION NUMBER RECORDED IN OFFICIAL RECORD BOOK 1773, PAGE 126.

⊘ CURVE DATA

CURVE NO.	△	TAN.	RADIUS	LENGTH
4	43°35'26"	537.00	1342.91	1021.69
5	09°15'00"	200.00	2472.27	399.13
46	3°46'31"	36.24	300.00	72.13



"NOTICE: There may be additional restrictions that are not recorded on this plat that may be found in the public records of this county."

SILVER SPRINGS SHORES

MARION COUNTY, FLORIDA

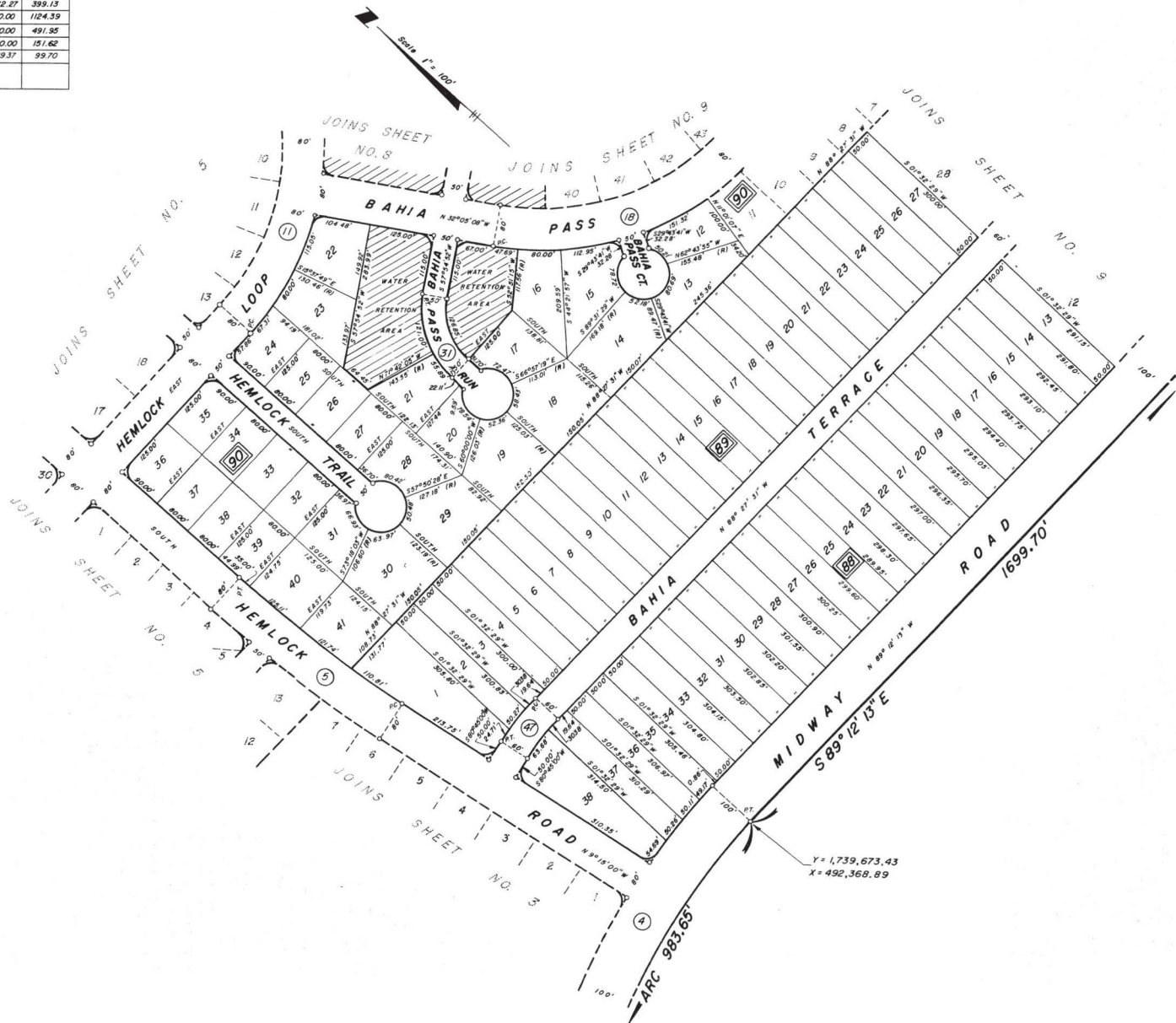
UNIT NO. 7

ANNULLED AND/OR VACATED, IN PART OR WHOLE, BY BOARD OF COUNTY COMMISSION RESOLUTION NUMBER 2002-25, RECORDED IN OFFICIAL RECORD BOOK 1773, PAGE 2266.

ANNULLED AND/OR VACATED, IN PART OR WHOLE, BY BOARD OF COUNTY COMMISSION RESOLUTION NUMBER 2002-25, RECORDED IN OFFICIAL RECORD BOOK 1773, PAGE 2266.

⊕ CURVE DATA

CURVE NO.	△	TAN.	RADIUS	LENGTH
4		43°35'26"	200.00	1342.91
5		09°15'00"	200.00	2472.27
11		128°50'42"	1044.63	500.00
18		56°22'23"	267.95	500.00
31		57°54'52"	83.00	190.00
47		10°47'29"	5000	529.37



SILVER SPRINGS SHORES

MARION COUNTY, FLORIDA

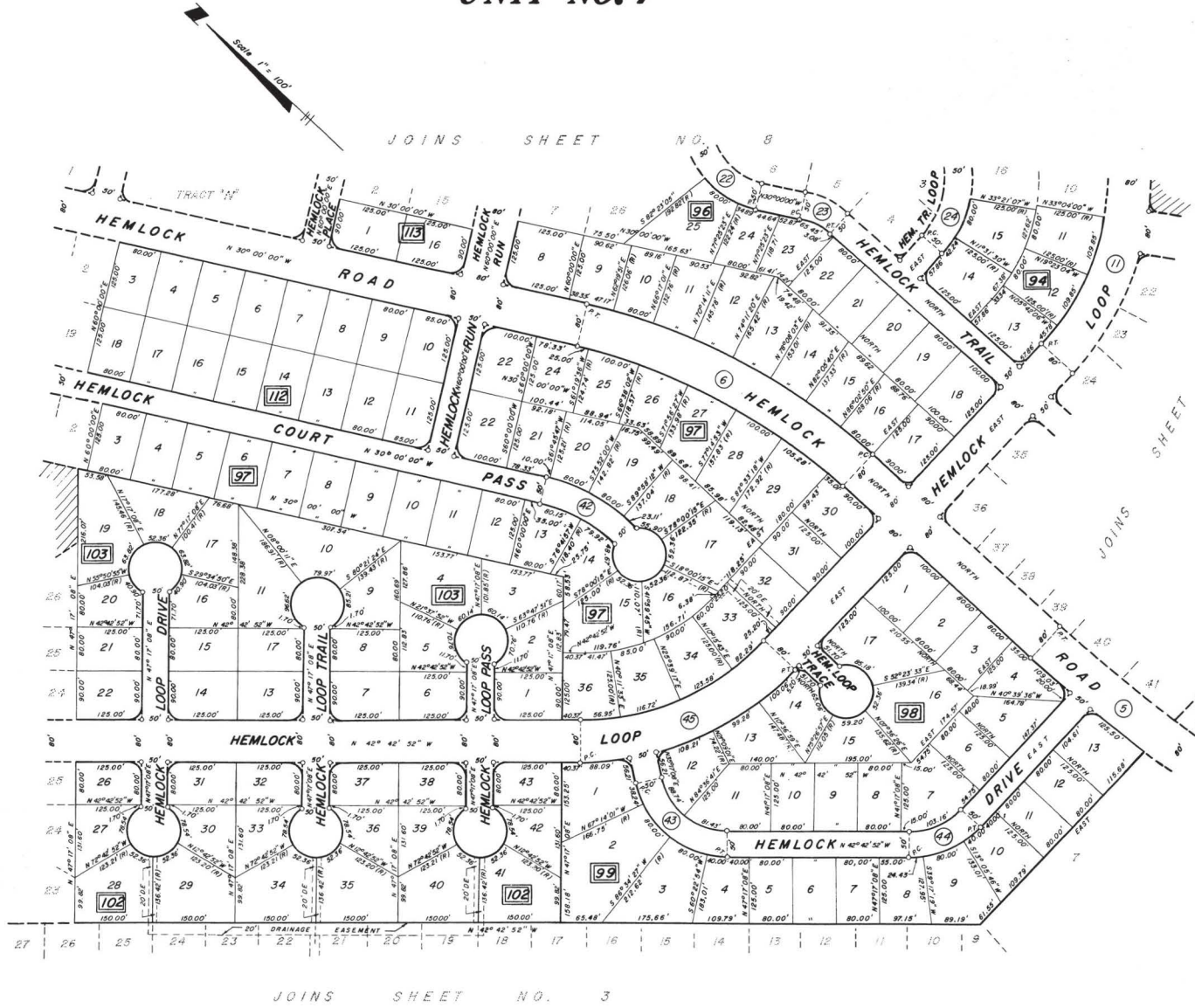
UNIT NO. 7

APPROVED AND FORWARDED, IN PART OR WHOLE, BY BOARD OF COUNTY COMMISSION RESOLUTION NUMBER _____ RECORDED IN OFFICIAL RECORD BOOK 773 PAGE 346

APPROVED AND FORWARDED, IN PART OR WHOLE, BY BOARD OF COUNTY COMMISSION RESOLUTION NUMBER _____ RECORDED IN OFFICIAL RECORD BOOK 773 PAGE 346

ε CURVE DATA

CURVE NO.	Δ	TAN	RADIUS	LENGTH
5	09°15'00"	200.00	2472.27	399.13
6	30°00'00"	300.00	1119.61	586.23
11	128°00'48"	1044.63	300.00	1124.39
22	30°00'00"	150.00	150.00	235.62
23	30°00'00"	40.19	150.00	78.54
24	128°00'48"	386.31	185.00	416.02
42	41°55'45"	115.15	300.00	219.89
43	178°00'00"	121.47	150.00	204.20
44	47°17'08"	65.67	150.00	123.79
45	47°17'08"	218.89	300.00	412.64



"NOTICE: There may be additional restrictions that are not recorded on this plat that may be found in the public records of this county."

ANNULLED AND/OR REVOKED IN PART OR WHOLE BY BOARD OF COUNTY COMMISSIONERS RESOLUTION NO. 2012-10-001-00001 RECORDED IN OFFICIAL RECORD BOOK 773 PAGE 3262

ANNULLED AND/OR REVOKED IN PART OR WHOLE BY BOARD OF COUNTY COMMISSIONERS RESOLUTION NO. 2012-10-001-00001 RECORDED IN OFFICIAL RECORD BOOK 773 PAGE 3262

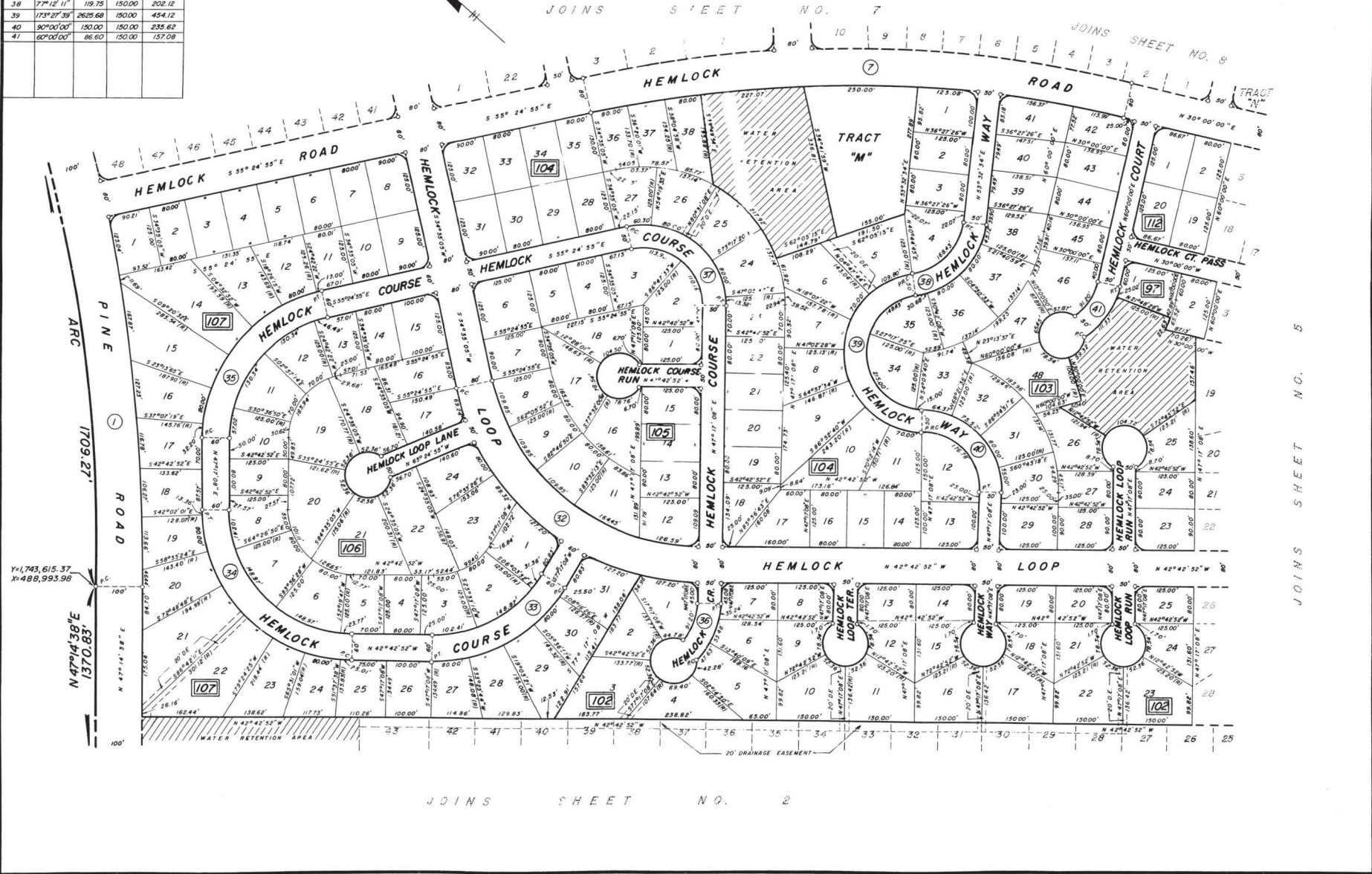
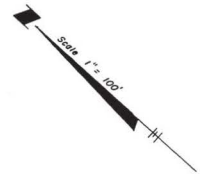
SILVER SPRINGS SHORES

MARION COUNTY, FLORIDA

UNIT NO. 7

Curve Data

CURVE NO.	Δ	TAN	RADIUS	LENGTH
1	25°58'45"	881.12	3819.72	1731.94
7	25°24'55"	600.00	2660.75	1180.26
32	77°17'57"	399.85	500.00	674.56
33	60°00'00"	173.21	300.00	314.16
34	90°00'00"	300.00	300.00	471.24
35	77°17'57"	239.91	300.00	404.74
36	60°00'00"	86.60	150.00	157.08
37	102°42'03"	187.57	150.00	268.87
38	77°12'11"	119.75	150.00	202.12
39	173°27'39"	2629.68	180.00	434.12
40	90°00'00"	180.00	180.00	256.62
41	60°00'00"	86.60	150.00	157.08



APPROVED AND FORWARDED, IN PART OR WHOLE, BY BOARD OF COUNTY COMMISSIONERS IN REGULATION RECORDED IN OFFICIAL RECORD BOOK 773 PAGE 326

APPROVED AND FORWARDED, IN PART OR WHOLE, BY BOARD OF COUNTY COMMISSIONERS IN REGULATION RECORDED IN OFFICIAL RECORD BOOK 773 PAGE 326

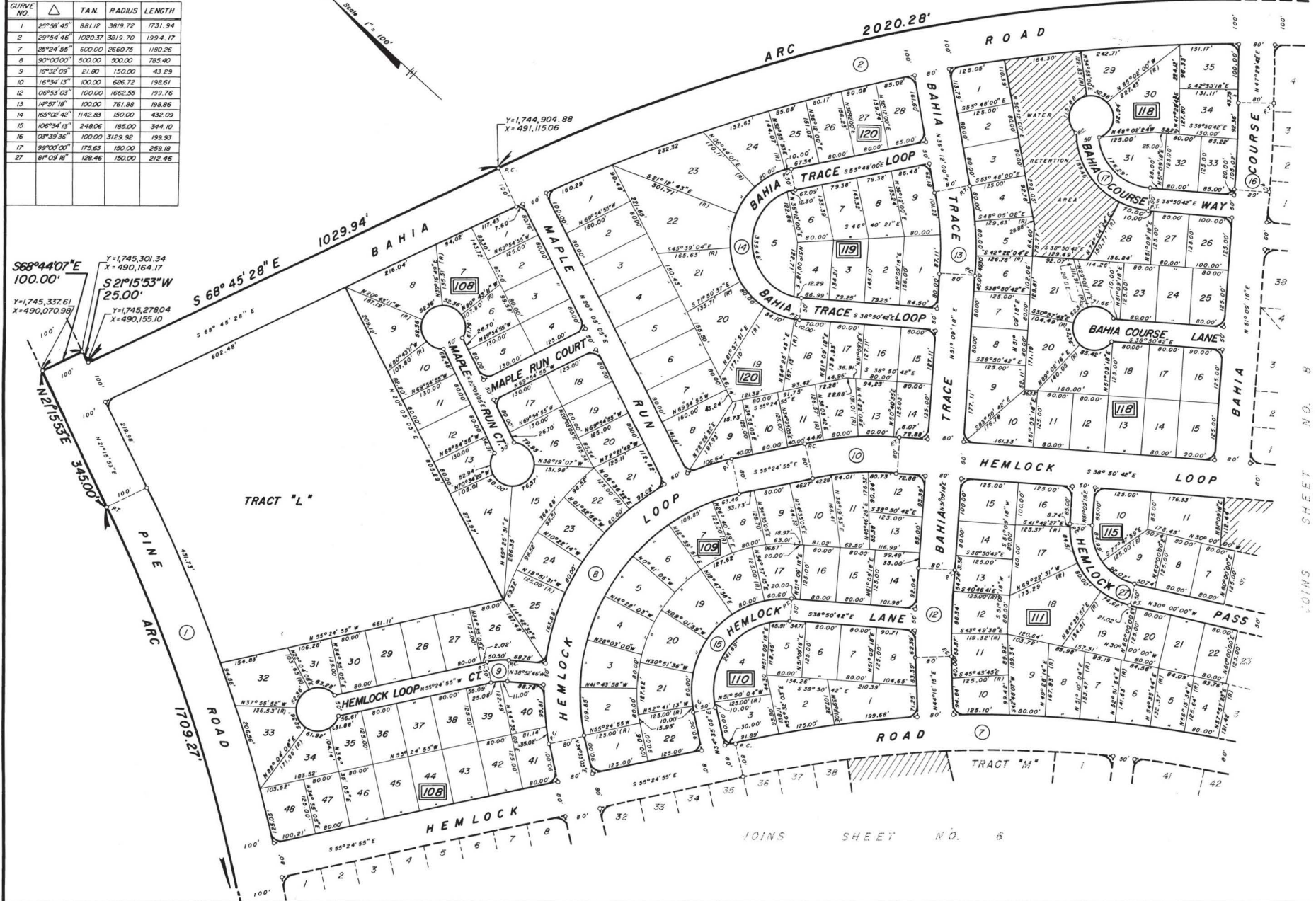
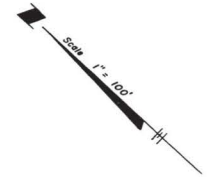
SILVER SPRINGS SHORES

MARION COUNTY, FLORIDA

UNIT NO. 7

ε CURVE DATA

CURVE NO.	Δ	TAN	RADIUS	LENGTH
1	20°58'45"	881.12	3819.72	1731.94
2	29°54'46"	1020.37	3819.70	1994.17
7	20°24'58"	600.00	2660.75	1180.26
8	90°00'00"	500.00	500.00	785.40
9	10°31'09"	21.80	150.00	43.29
10	16°34'13"	100.00	685.72	198.67
12	08°53'03"	100.00	1652.55	199.76
13	14°57'18"	100.00	751.88	198.86
14	165°00'40"	1142.83	150.00	432.09
15	106°34'13"	248.06	185.00	344.10
16	03°39'36"	100.00	3129.92	199.93
17	99°00'00"	175.63	150.00	259.18
27	8°09'18"	128.46	150.00	212.46



JOINS SHEET NO. 8

JOINS SHEET NO. 6

"NOTICE: There may be additional restrictions that are not recorded on this plat that may be found in the public records of this county."

SILVER SPRINGS SHORES

MARION COUNTY, FLORIDA

UNIT NO. 7

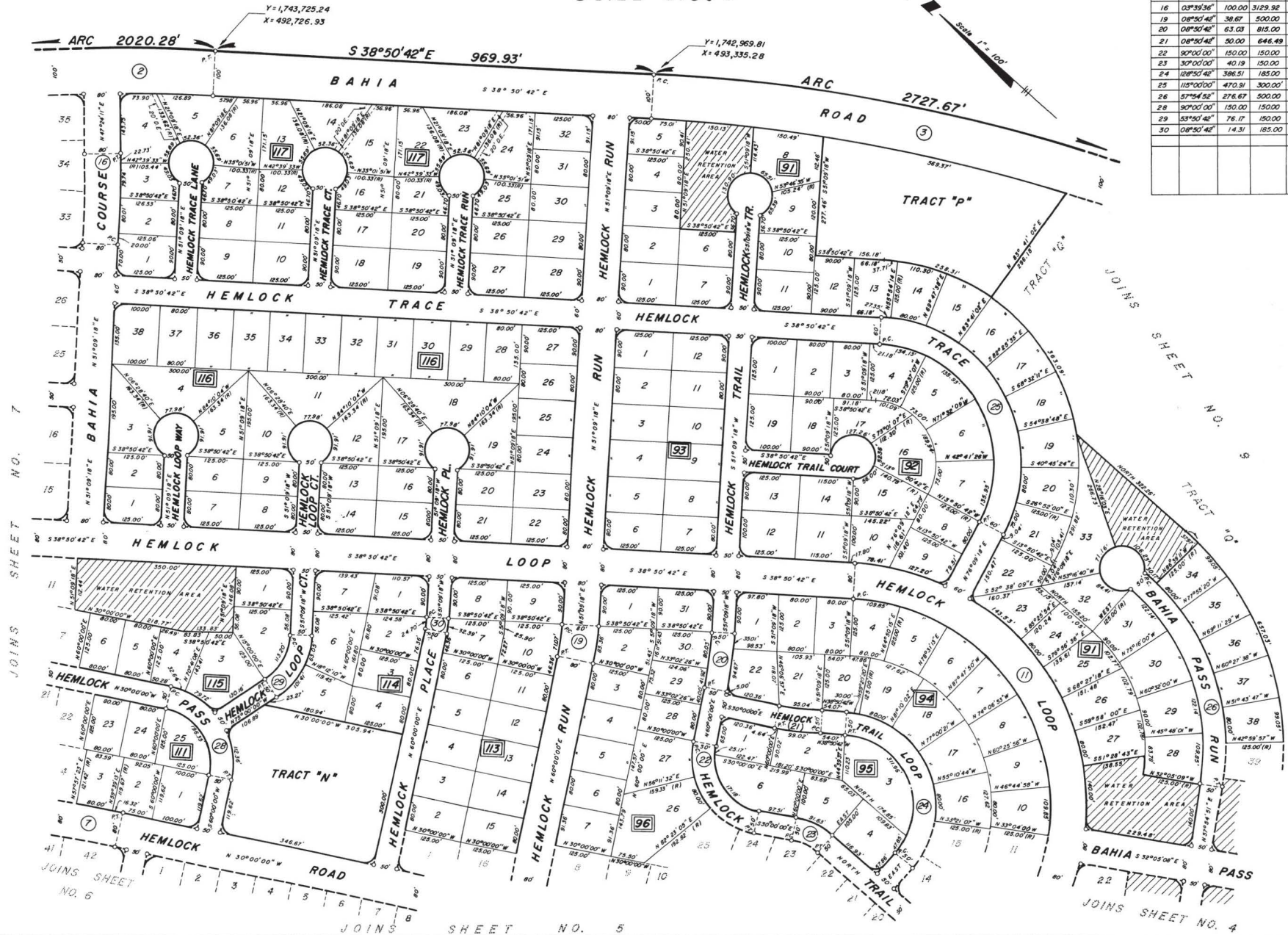
SHEET 8 OF 9 SHEETS

ANNULLED AND / OR VACATED, IN PART OR WHOLE, BY BOARD OF COUNTY COMMISSION RESOLUTION NUMBER 12-1, RECORD BOOK 723, PAGE 2-3-12.

ASSEMBLED AND DRAWN IN PART OR WHOLE BY BOARD OF COUNTY COMMISSION RESOLUTION NUMBER 12-1, RECORD BOOK 723, PAGE 2-3-12.

℄ CURVE DATA

CURVE NO.	Δ	TAN	RADIUS	LENGTH
2	29°54'46"	1020.37	3819.70	1994.17
3	40°23'11"	1404.87	3819.72	2692.43
7	25°24'58"	600.00	2660.75	1180.26
11	08°50'42"	1044.63	5000.00	1124.39
16	03°39'34"	100.00	3129.92	199.93
19	08°50'42"	38.67	500.00	77.19
20	08°50'42"	63.03	815.00	125.81
21	08°50'42"	50.00	646.49	99.80
22	90°00'00"	150.00	150.00	235.62
23	30°00'00"	40.19	150.00	78.54
24	128°50'42"	386.51	185.00	416.02
25	115°00'00"	470.91	300.00	602.14
26	57°54'52"	276.67	500.00	484.16
28	90°00'00"	150.00	150.00	235.62
29	53°50'42"	76.17	150.00	140.97
30	08°50'42"	14.31	185.00	28.56



"NOTICE: There may be additional restrictions that are not recorded on this plat that may be found in the public records of this county."

SILVER SPRINGS SHORES

MARION COUNTY, FLORIDA

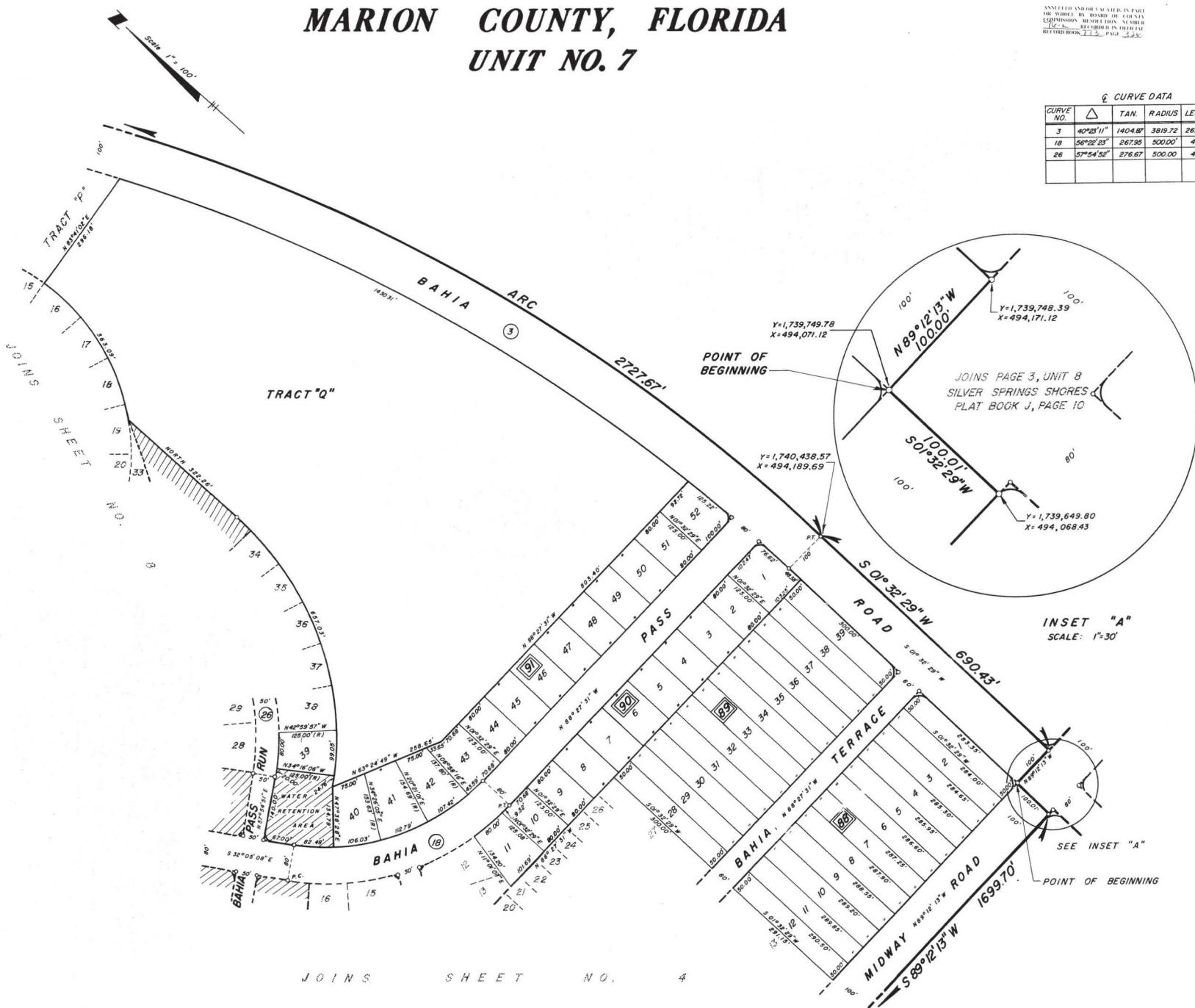
UNIT NO. 7

ANNULLED AND/OR VACATED, IN PART OR WHOLE, BY BOARD OF COUNTY COMMISSION RESOLUTION NUMBER _____ RECORDED IN OFFICIAL RECORD BOOK 773, PAGE 326.

ANNULLED AND/OR VACATED, IN PART OR WHOLE, BY BOARD OF COUNTY COMMISSION RESOLUTION NUMBER _____ RECORDED IN OFFICIAL RECORD BOOK 773, PAGE 326.

Q CURVE DATA

CURVE NO.	Δ	TAN.	RADIUS	LENGTH
3	40°25'11"	1404.87	3819.72	2692.43
18	56°22'23"	267.95	500.00	491.95
26	57°54'52"	276.67	500.00	484.16



JOINS SHEET NO. 4