



SW 38th/40th Street Preliminary Engineering Report

Board of County Commissioners Workshop
January 16th, 2024



Project Location





Preliminary Engineering Study Components



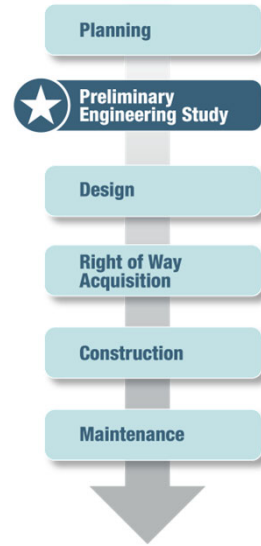
Public Involvement and Stakeholder Coordination



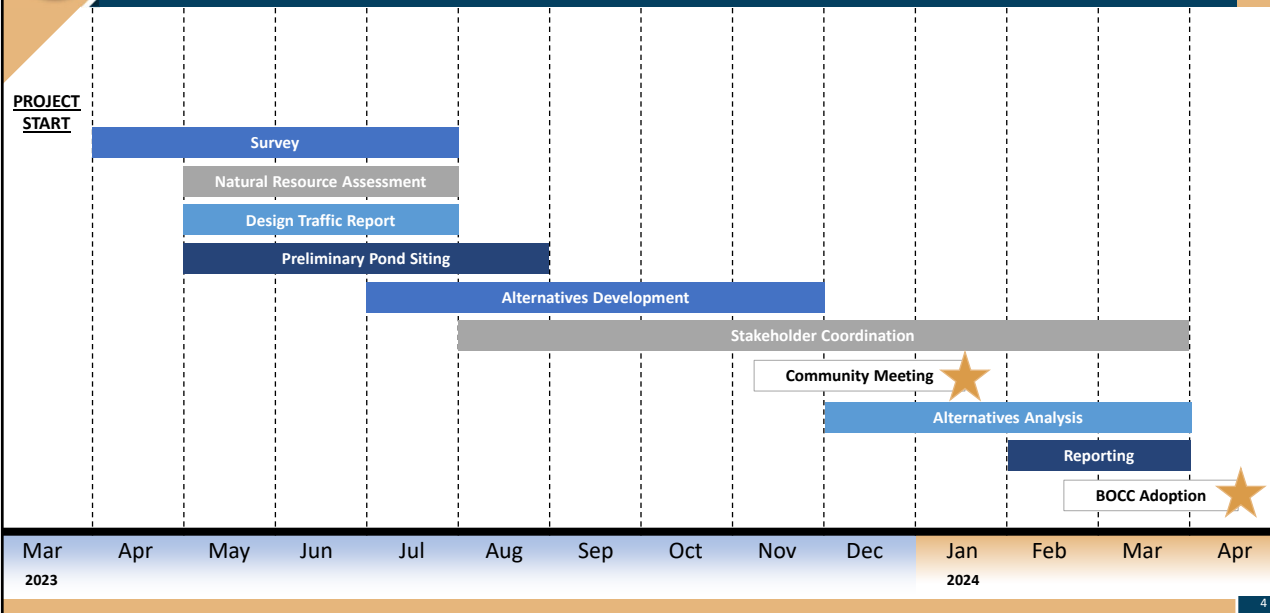
Engineering Considerations - Traffic, Drainage, Right-of-Way



Environmental Considerations - Natural Resources, Wetlands, Social Impacts



PER Schedule





Existing Conditions – SW 80th Ave to SW 60th Ave



Existing Conditions – SW 60th Ave to SW 43rd Ct

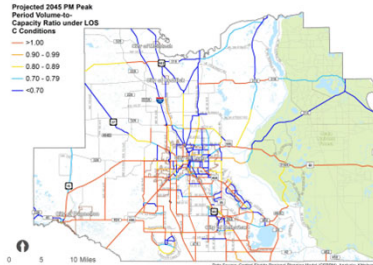




Project Need

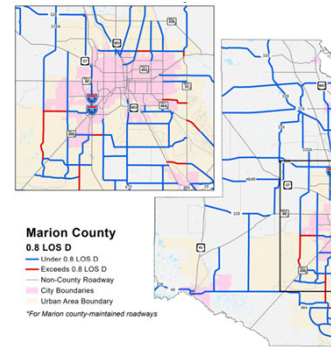
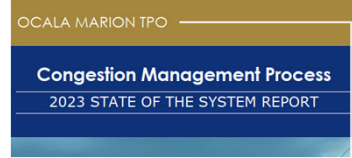
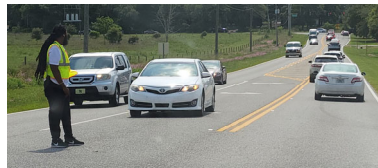


FIGURE 5.2: TRAFFIC CONGESTION

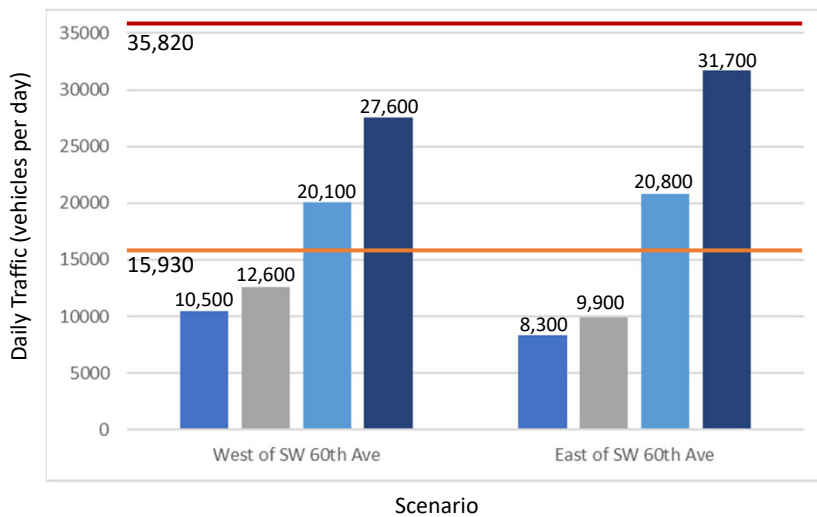


2045 LONG RANGE TRANSPORTATION PLAN - TRANSPORTATION NEEDS ASSESSMENT

- Shown as a Need in the 2045 L RTP
- Priority 25 on the LOPP Non-SIS Capacity Priorities List
- Project C4 and C5 on the Marion County TIP



Future Traffic Projections



Legend

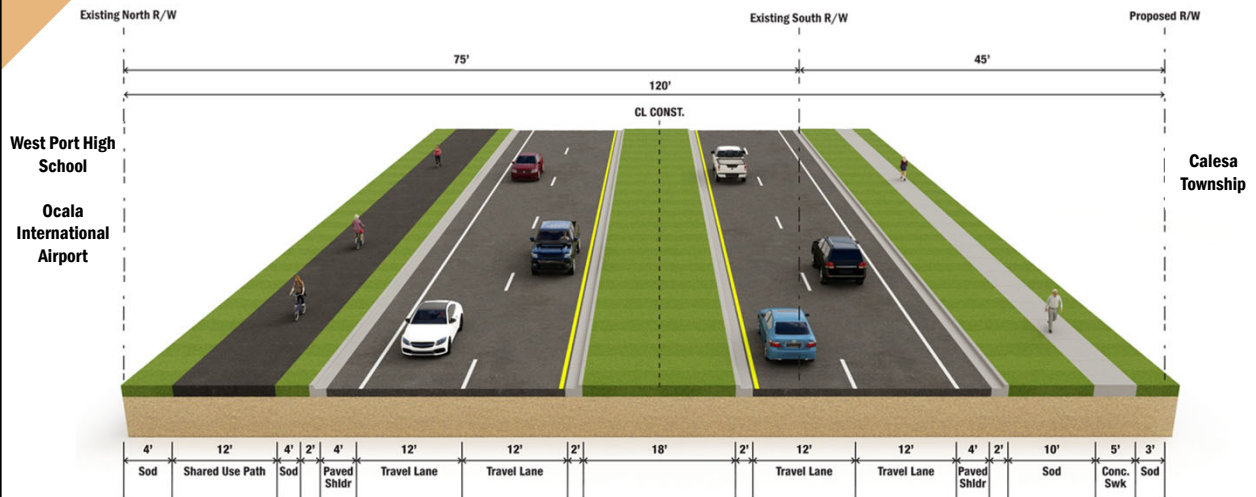
- 2023 Existing Year
- 2025 Opening Year
- 2035 Mid Year
- 2045 Design Year
- 2-Lane Service Volume
- 4-Lane Service Volume



Typical Section Locations



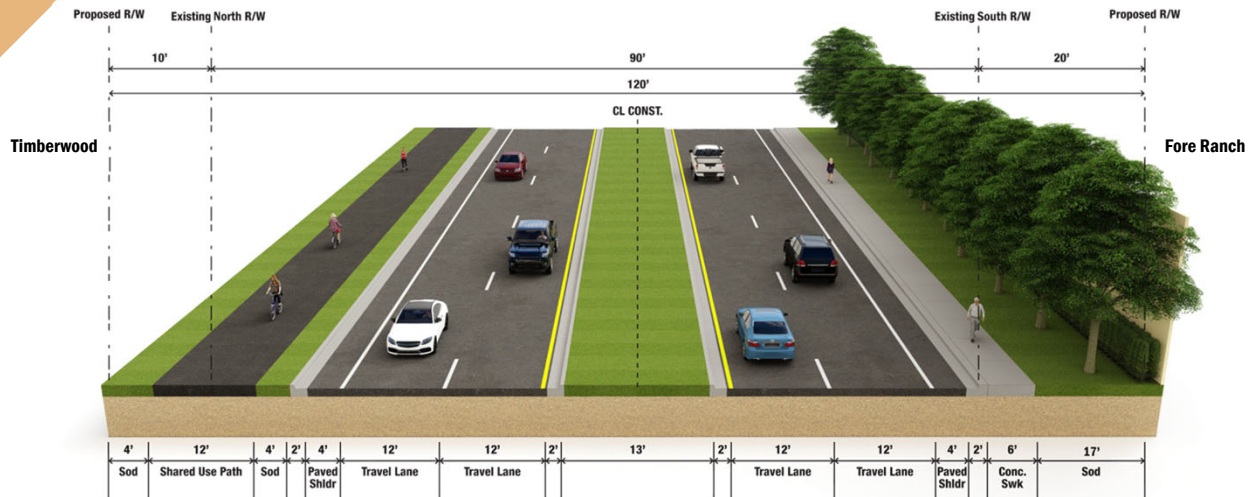
Typical Section Alternative – Section 1 SW 80th Ave to SW 60th Ave



Typical Section 1A
From SW 80th Avenue to SW 60th Avenue



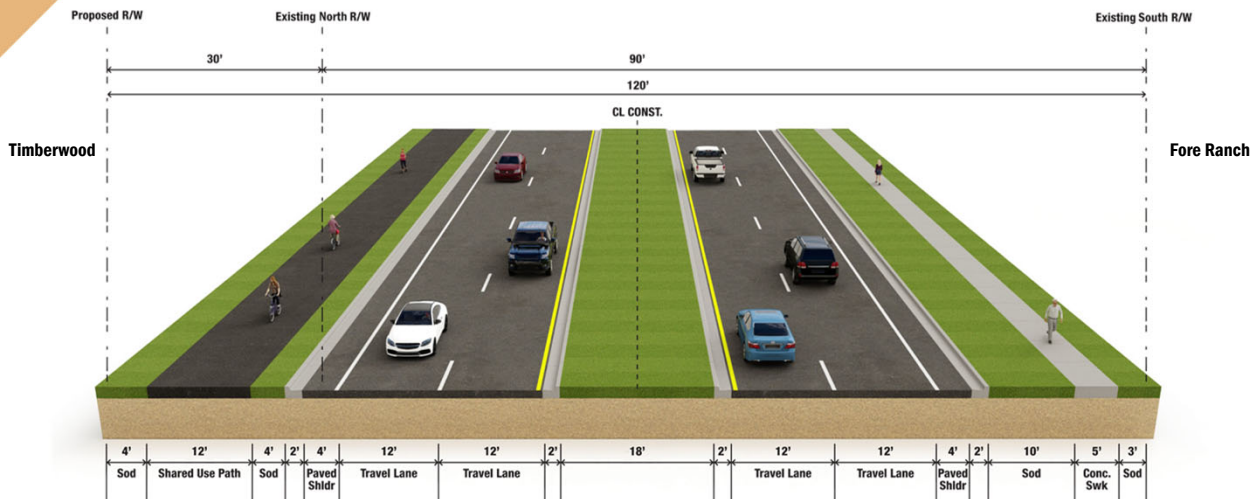
Typical Section Alternatives – Section 2 SW 60th Ave to SW 46th Ave



Typical Section 2A
From SW 60th Avenue to SW 46th Avenue



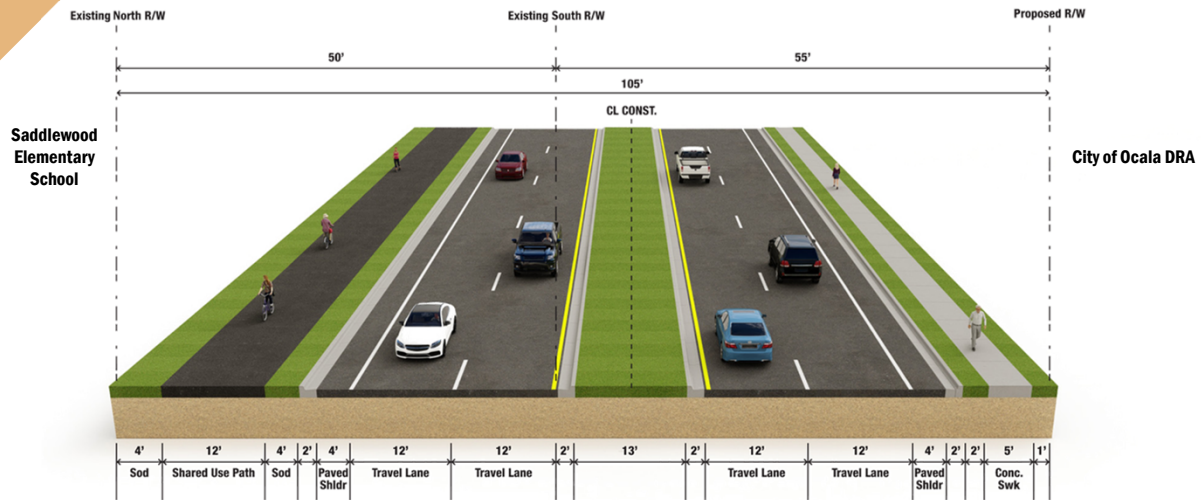
Typical Section Alternatives – Section 2 SW 60th Ave to SW 46th Ave



Typical Section 2B
From SW 60th Avenue to SW 46th Avenue



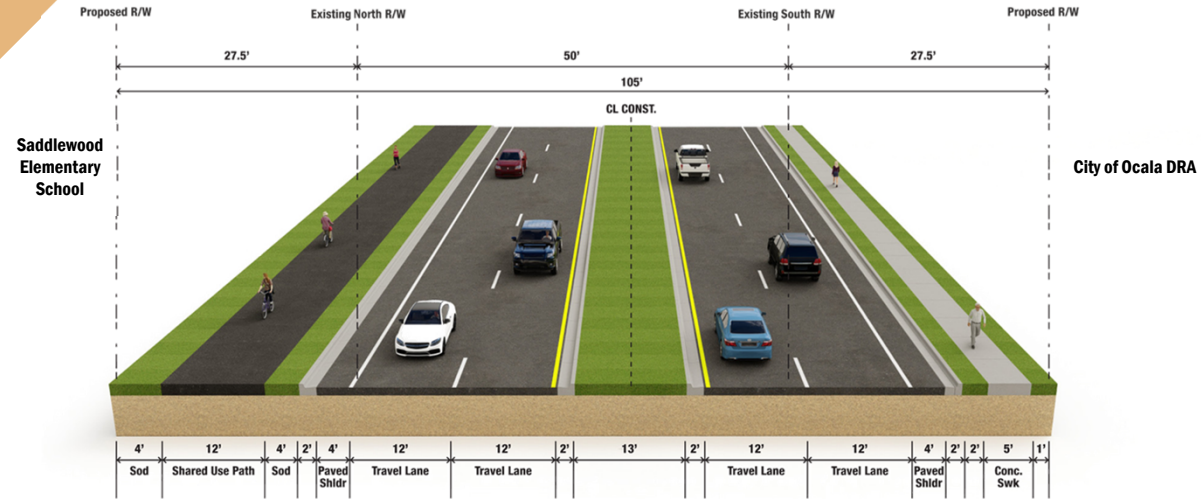
Typical Section Alternatives – Section 3 SW 46th Ave to SW 43rd Ct



Typical Section 3A
From SW 46th Avenue to SW 43rd Court



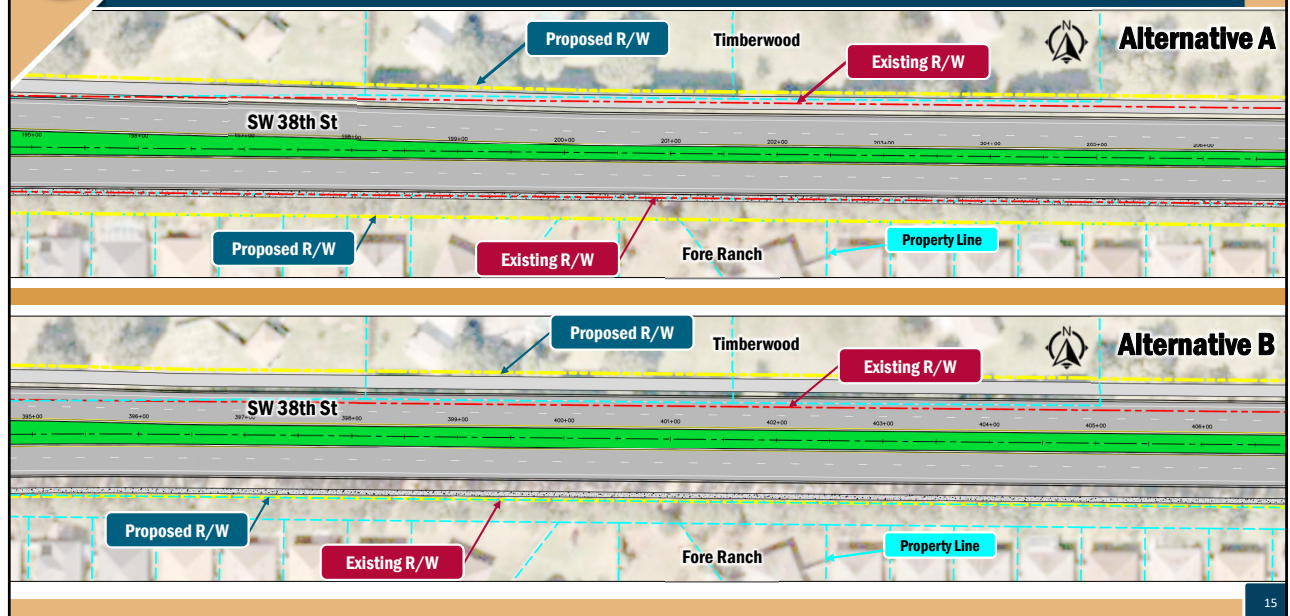
Typical Section Alternatives – Section 3 SW 46th Ave to SW 43rd Ct



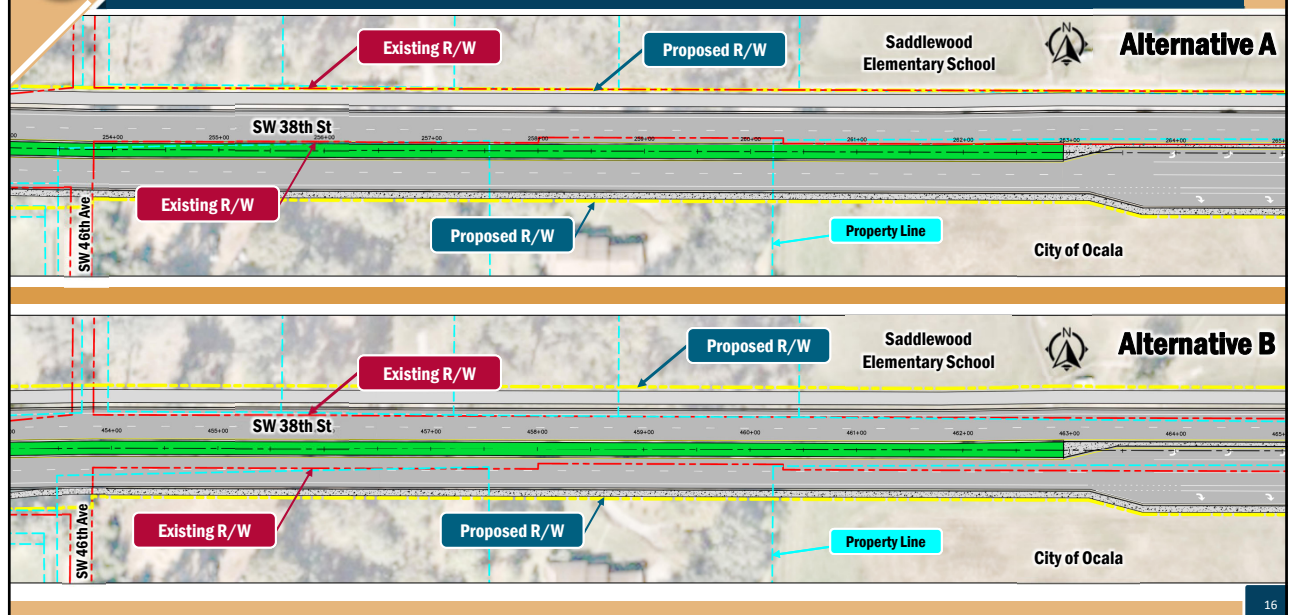
Typical Section 3B
From SW 46th Avenue to SW 43rd Court



Build Alternatives – SW 60th Ave to SW 46th Ave

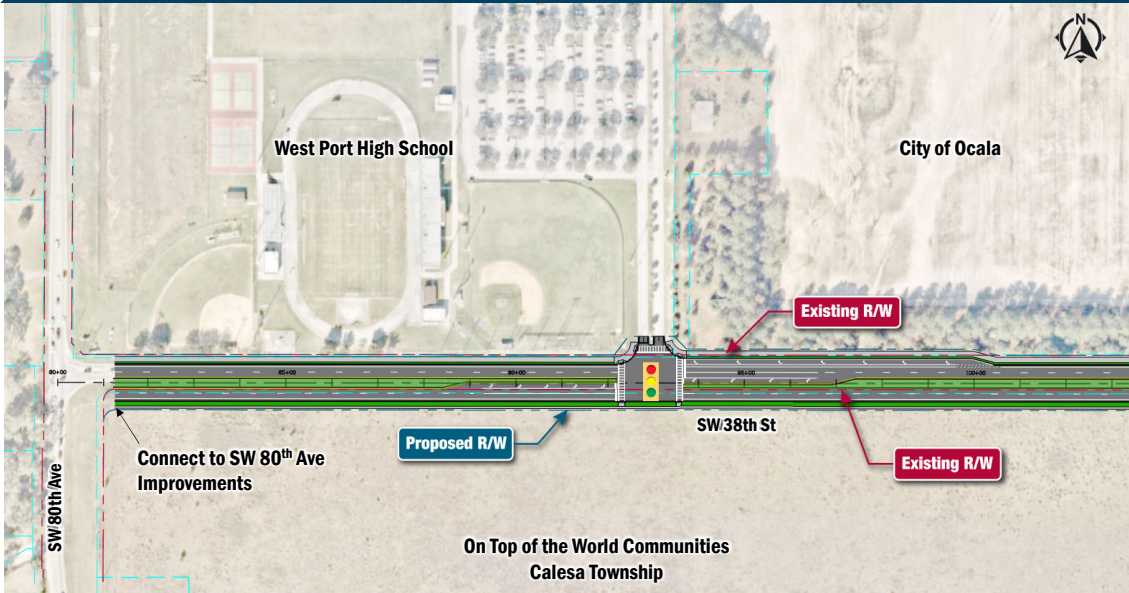


Build Alternatives – SW 46th Ave to SW 43rd Ct

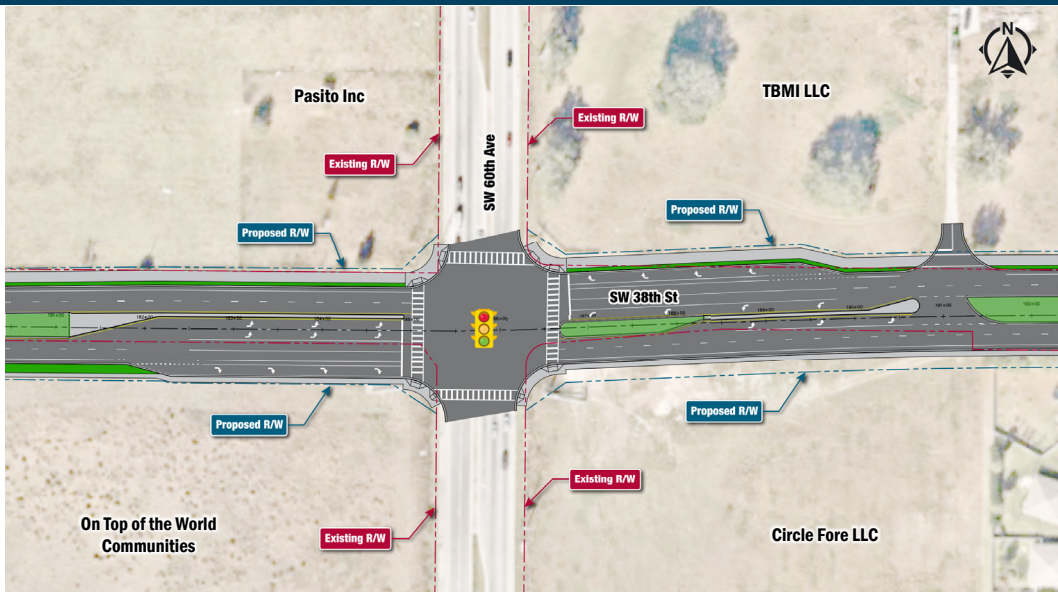




West Port High School Circulation

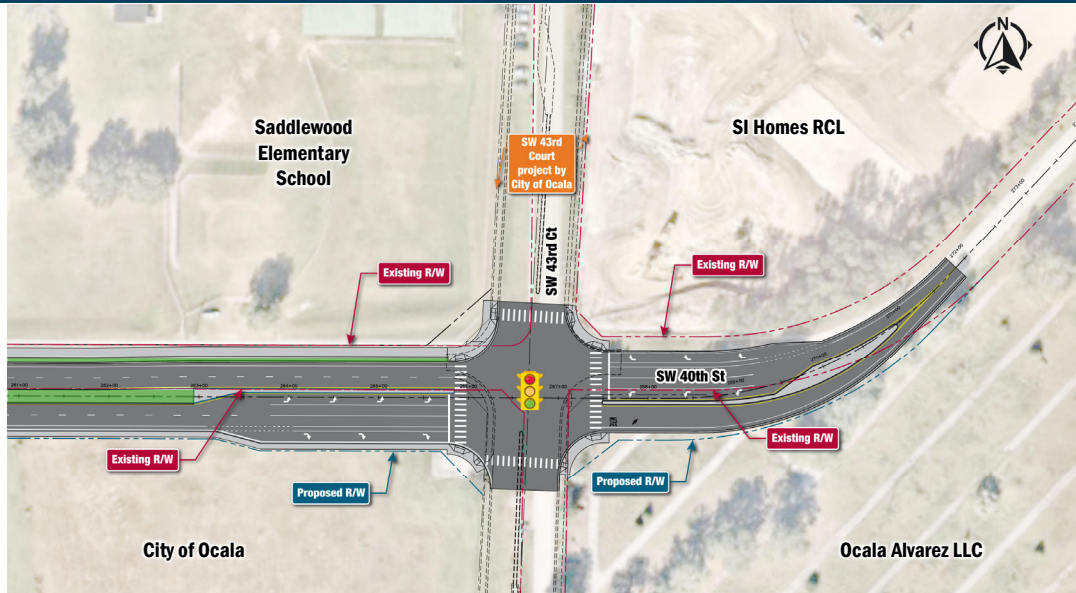


SW 38th Street at SW 60th Avenue



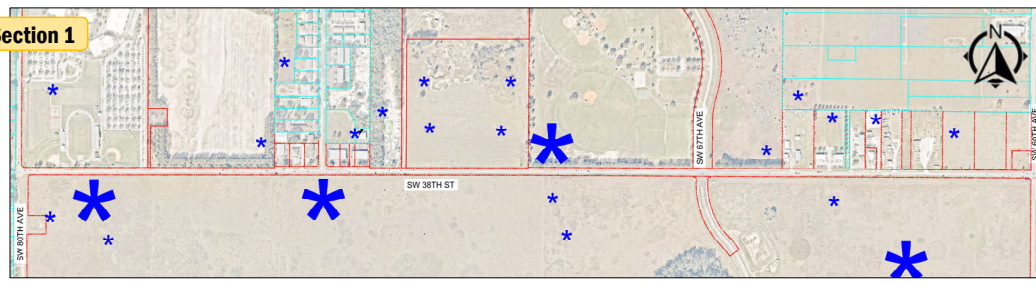


SW 38th Street at SW 43rd Court

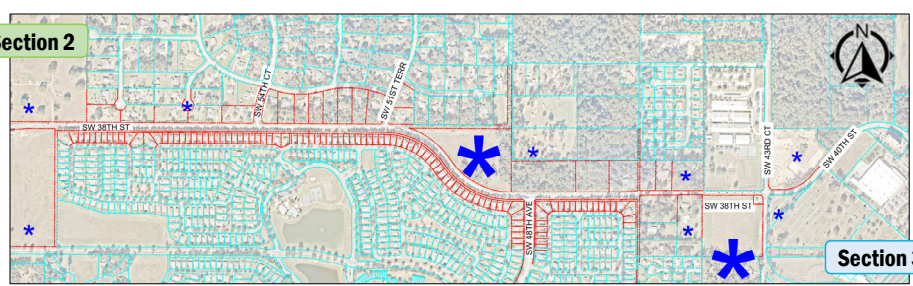


Drainage

Section 1





Section 2



Section 3

Legend

-  = Preferred DRA Location
-  = Alternative DRA Location
- DRA = Drainage Retention Area

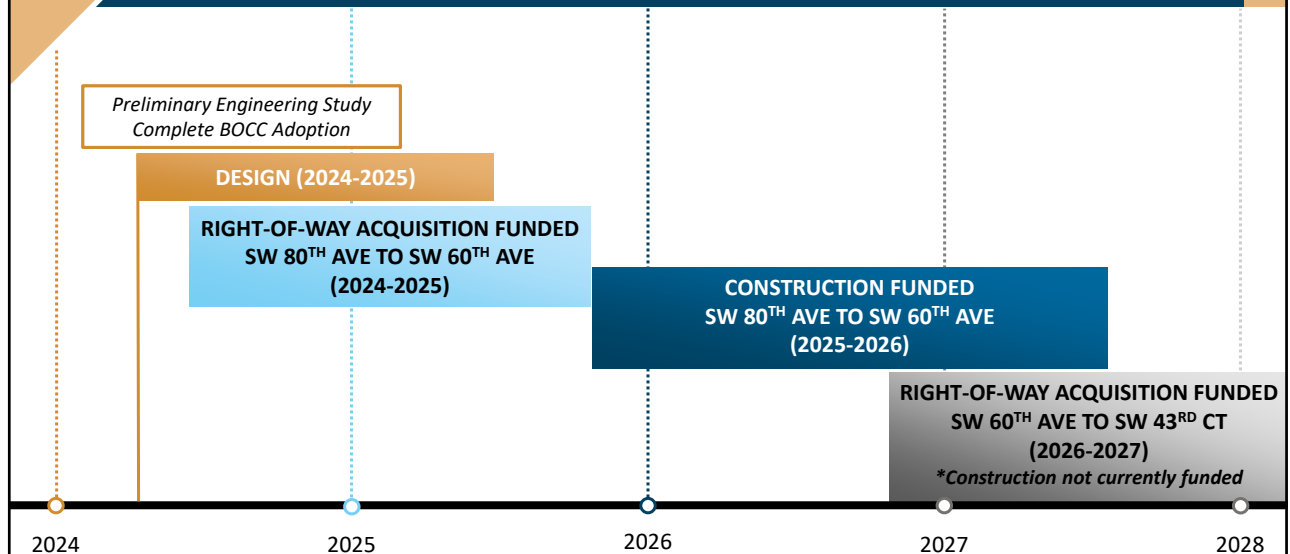


Alternatives Evaluation

- Natural and Physical Environmental Impacts
- Social and Cultural Impacts
- Engineering Impacts
- Property Impacts
- Public Input
- Costs



Schedule and Next Steps





Community Meeting

Meeting Details

Date: Tuesday January 30, 2024

Time: 5:30PM – 7:00PM

Location: West Port High School Auditorium
3733 SW 80th Avenue
Ocala, FL 34481



Kimley»Horn



SW 38th/40th Street Preliminary Engineering Report

Board of County Commissioners Workshop
January 16th, 2024