



05/13/2025

**Gensler****OCALA DISTRICT OFFICE - AERIAL VIEW****A-001**

CANOPY TREES



Southern Magnolia



Southern Live Oak



Winged Elm



American Holly



American Hornbeam

UNDERSTORY TREES



White Fringetree



Flowering Dogwood



Yaupon Holly

05/13/2025



Site Elevation | Landscape Buffer at Planting | **Typical "Type B" Buffer**

05/13/2025



Gensler

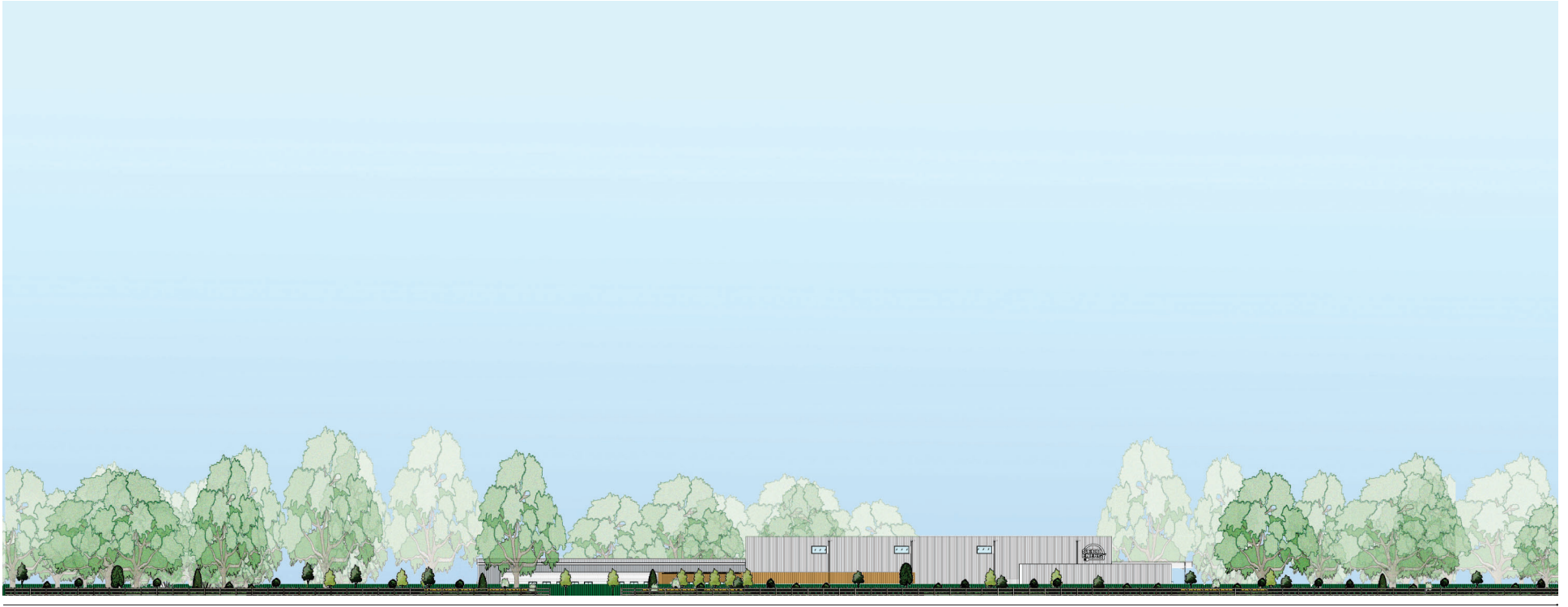
SITE ELEVATION - BUFFER AT PLANTING

A-003



Enlarged Site Elevation | Landscape Buffer at Planting | **Typical "Type-B" Buffer**

05/13/2025



Site Elevation | Landscape Buffer at Planting | **CR-475A Buffer (East Boundary)**

05/13/2025



Gensler

SITE ELEVATION - BUFFER AT PLANTING

A-005



Enlarged Site Elevation | Landscape Buffer at Planting | **CR-475A Buffer (East Boundary)**



Enlarged Site Elevation | Landscape Buffer at Planting (w/ Open Gate) | **CR-475A Buffer (East Boundary)**

05/13/2025



Site Elevation | Landscape Buffer at 3 yrs | **Typical "Type B" Buffer**

05/13/2025



Gensler

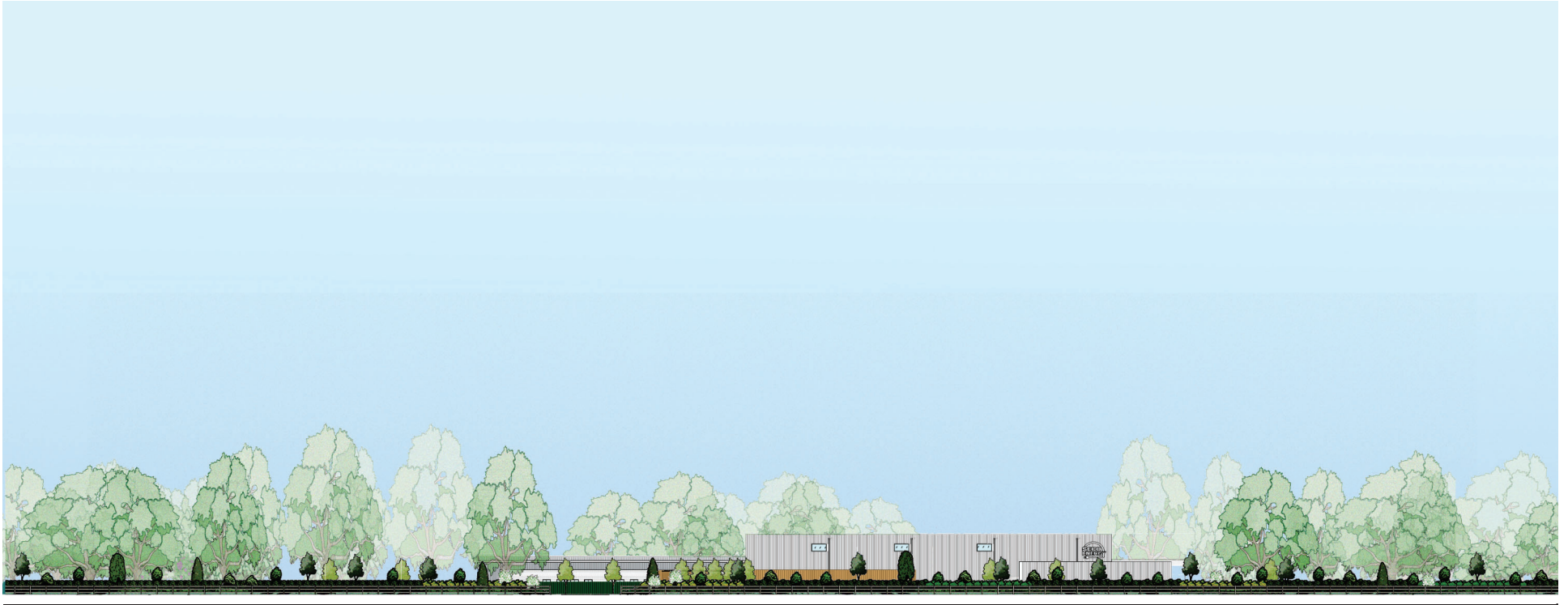
SITE ELEVATION - BUFFER AT 3 YRS

A-007



Enlarged Site Elevation | Landscape Buffer at 3 yrs | **Typical "Type B" Buffer**

05/13/2025



Site Elevation | Landscape Buffer at 3 yrs | **CR-475A Buffer (East Boundary)**

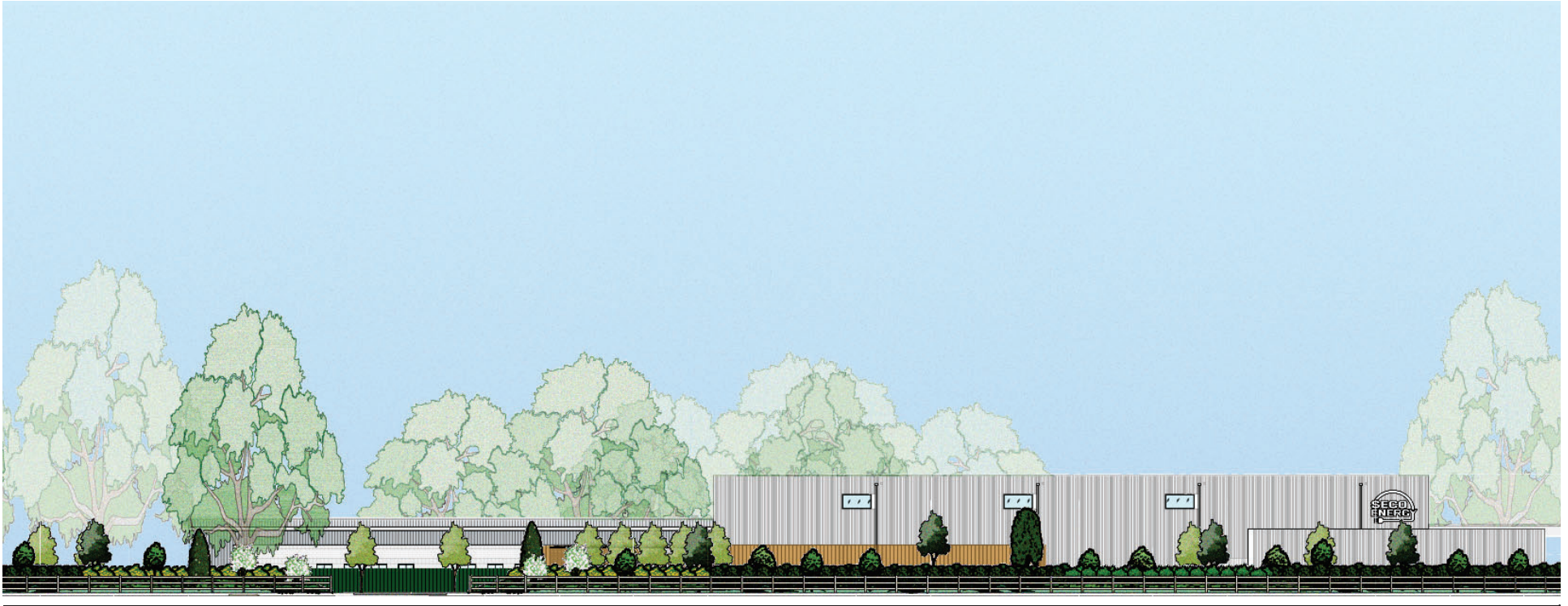
05/13/2025



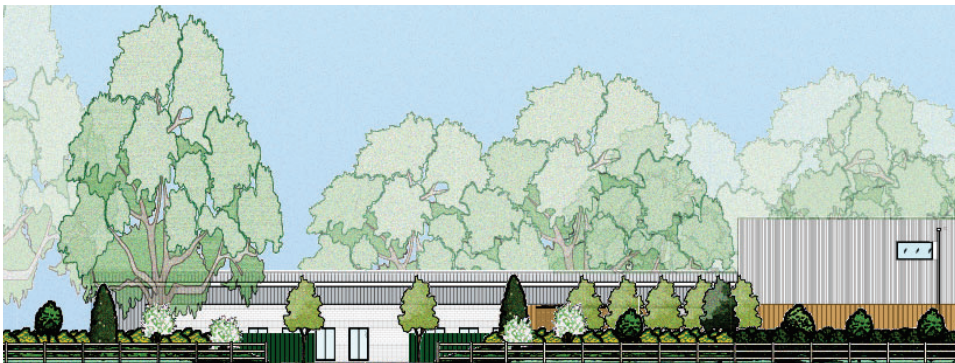
Gensler

SITE ELEVATION - BUFFER AT 3 YRS

A-009

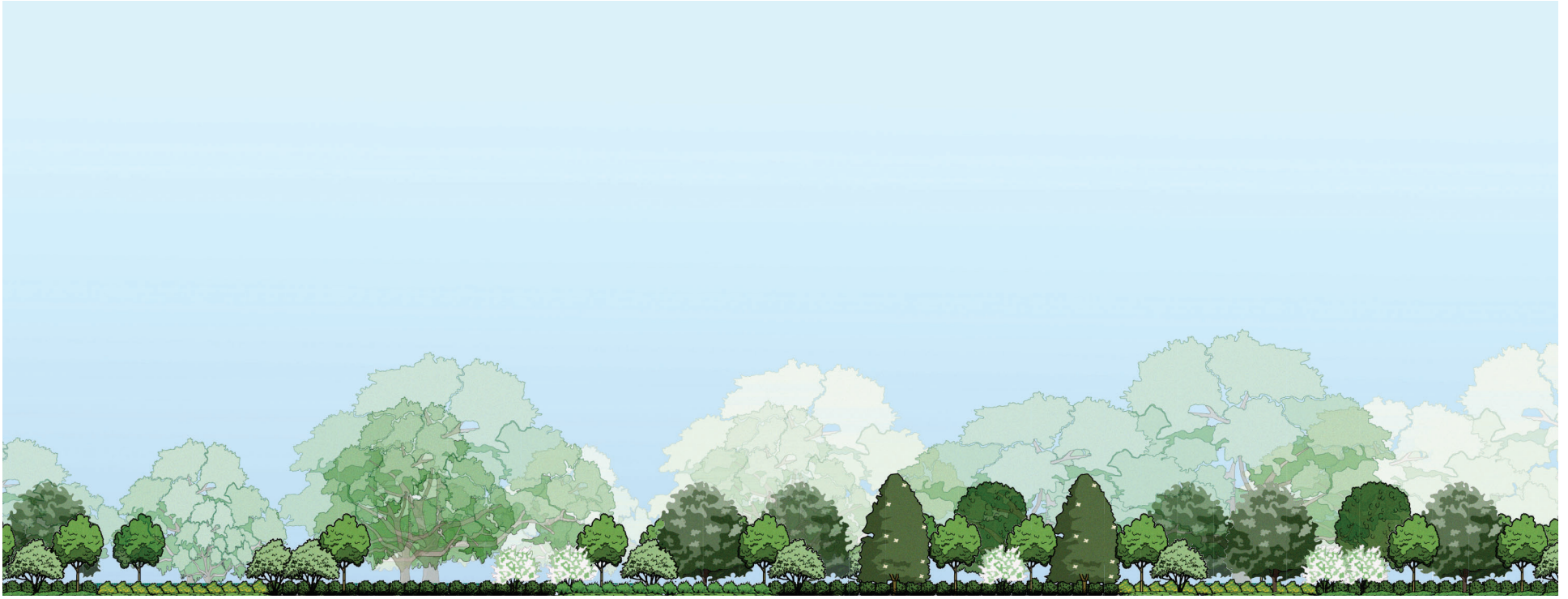


Enlarged Site Elevation | Landscape Buffer at 3 yrs | **CR-475A (East Boundary)**



Enlarged Site Elevation | Landscape Buffer at 3 yrs (w/ Open Gate) | **CR-475A Buffer (East Boundary)**

05/13/2025



Site Elevation | Landscape Buffer Fully Mature | **Typical "Type B" Buffer**

05/13/2025



Gensler

SITE ELEVATION - BUFFER FULLY MATURE

A-011



Enlarged Site Elevation | Landscape Buffer Fully Mature | **Typical "Type B" Buffer**

05/13/2025



Site Elevation | Landscape Buffer Fully Mature | **CR-475A (East Boundary)**

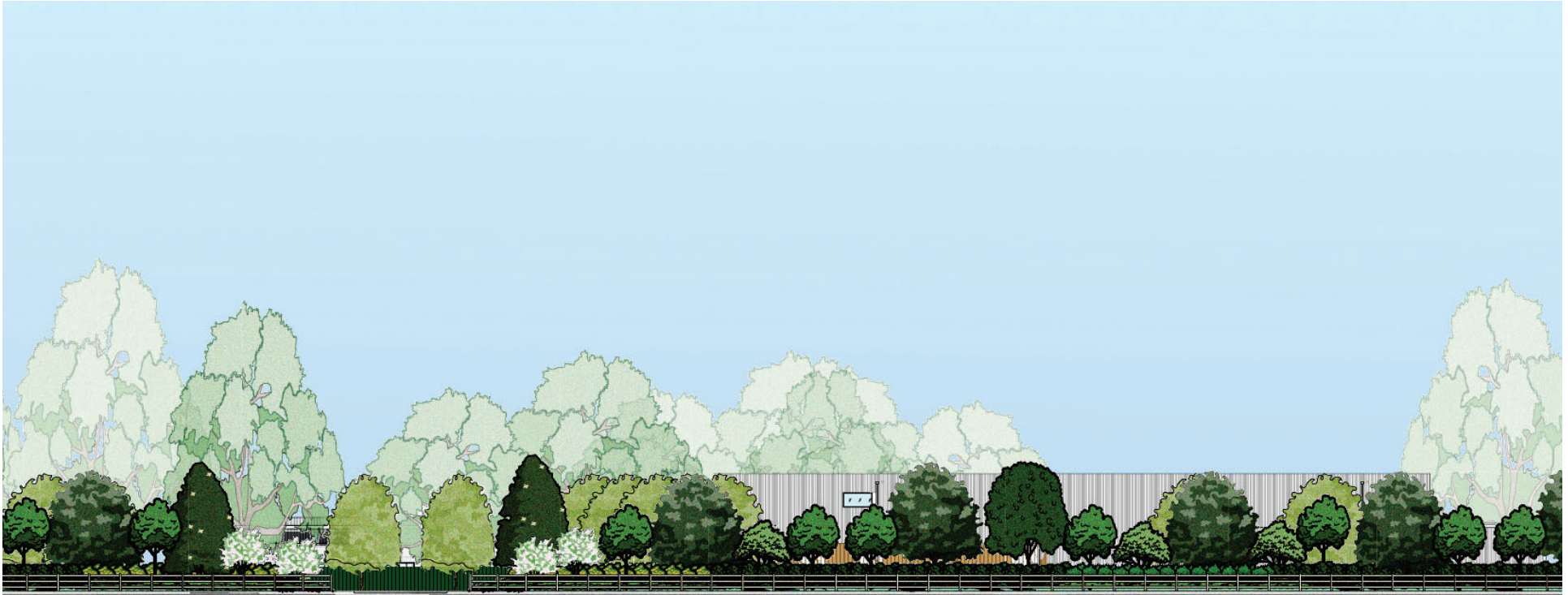
05/13/2025



Gensler

SITE ELEVATION - BUFFER FULLY MATURE

A-013

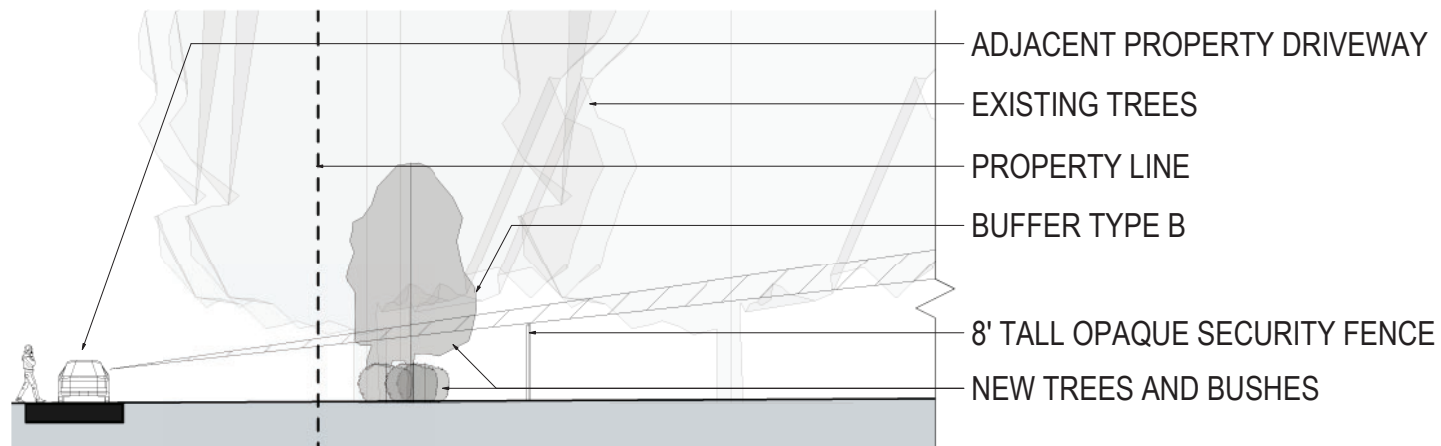


Enlarged Site Elevation | Landscape Buffer Fully Mature | **CR-475A (East Boundary)**

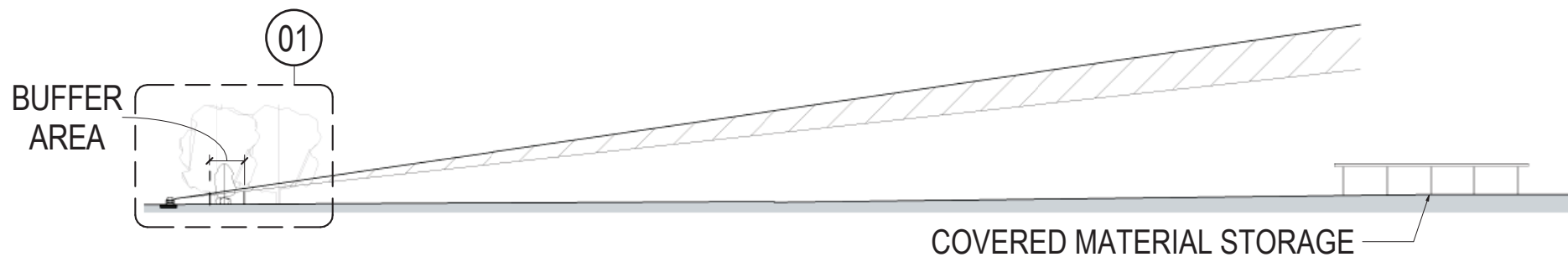


Enlarged Site Elevation | Landscape Buffer Fully Mature (w/ Open Gate) | **CR-475A Buffer (East Boundary)**

05/13/2025

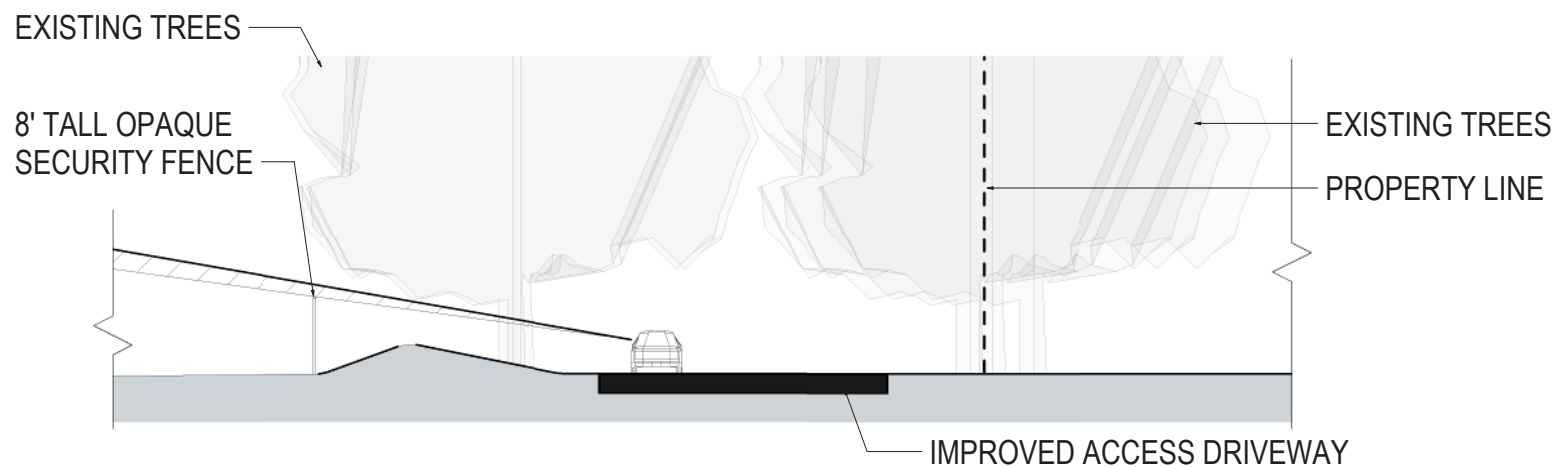


01 - ENLARGED SITE SECTION - NORTH BOUNDARY | SCALE: 1" = 20'-0"

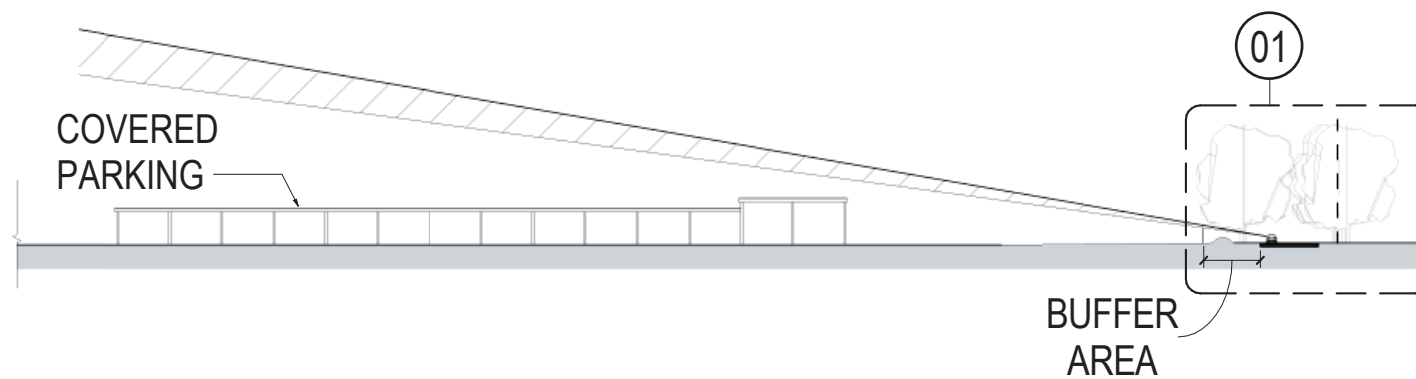


02 - SITE SECTION - NORTH BOUNDARY | SCALE: 1" = 100'-0"

05/13/2025

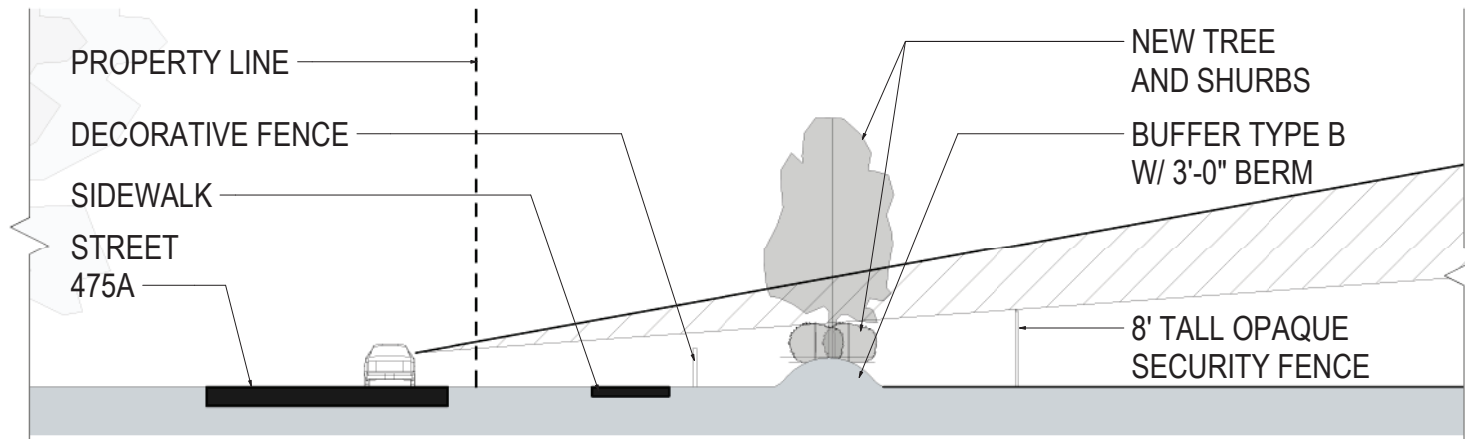


01 - ENLARGED SITE SECTION - SOUTH BOUNDARY | SCALE: 1" = 20'-0"

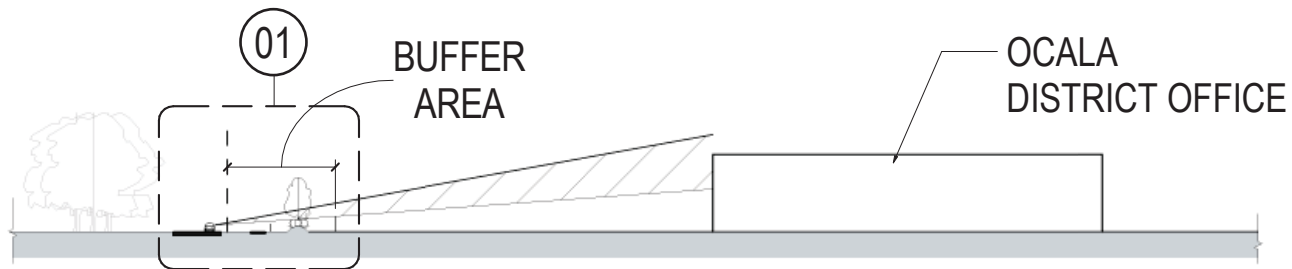


02 - SITE SECTION - SOUTH BOUNDARY | SCALE: 1" = 100'-0"

05/13/2025

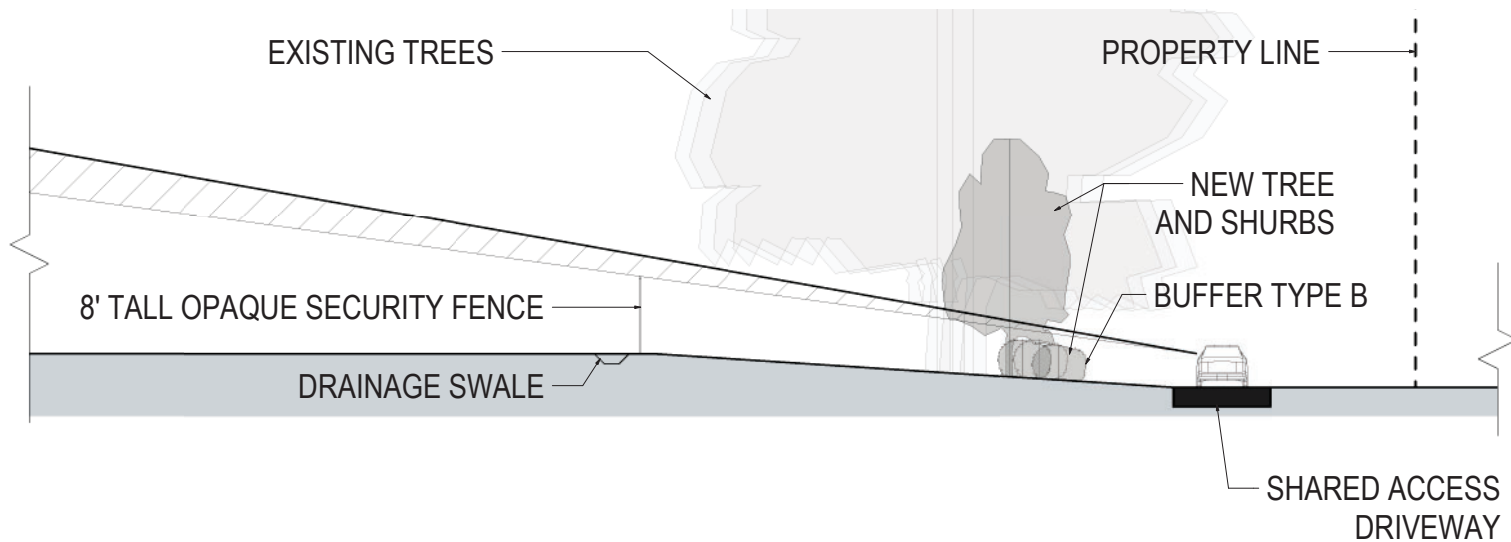


01 - ENLARGED SITE SECTION - EAST BOUNDARY (CR-475A) | SCALE: 1" = 20'-0"

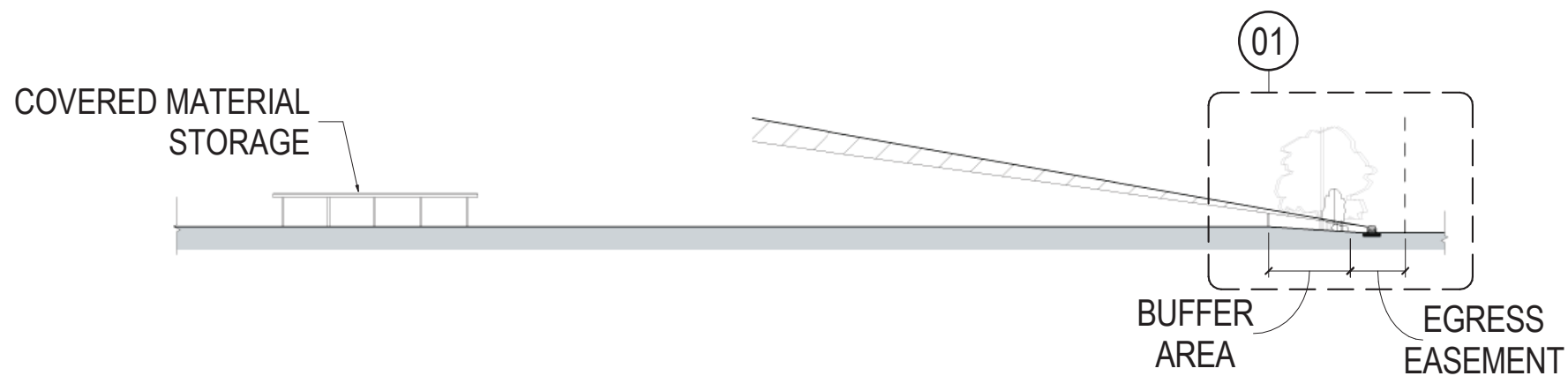


02 - SITE SECTION - EAST BOUNDARY (CR-475A) | SCALE: 1" = 100'-0"

05/13/2025

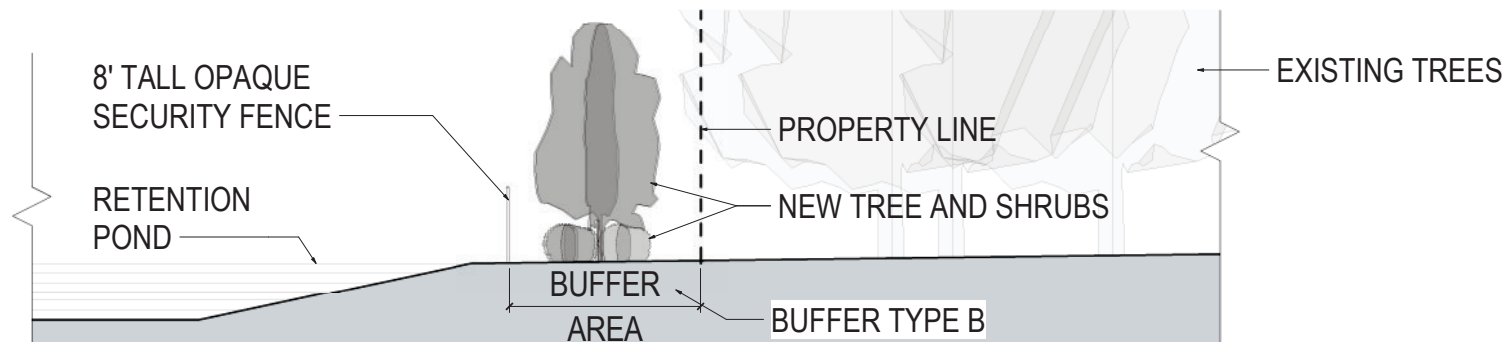


01 - ENLARGED SITE SECTION - WEST BOUNDARY | SCALE: 1" = 20'-0"



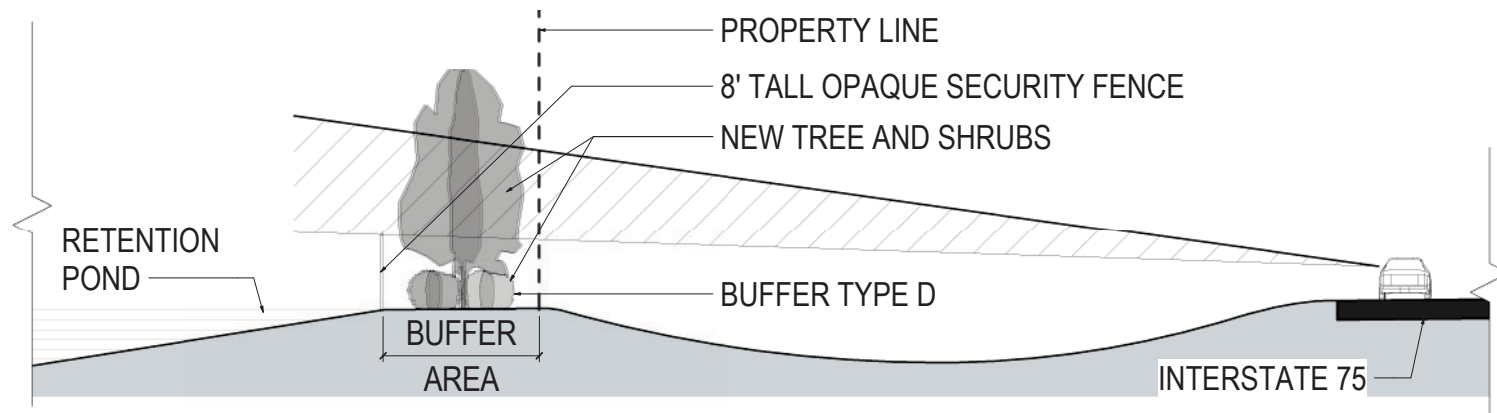
02 - SITE SECTION - WEST BOUNDARY | SCALE: 1" = 100'-0"

05/13/2025



01 - ENLARGED SITE SECTION - SOUTH BOUNDARY | SCALE: 1" = 20'-0"

05/13/2025

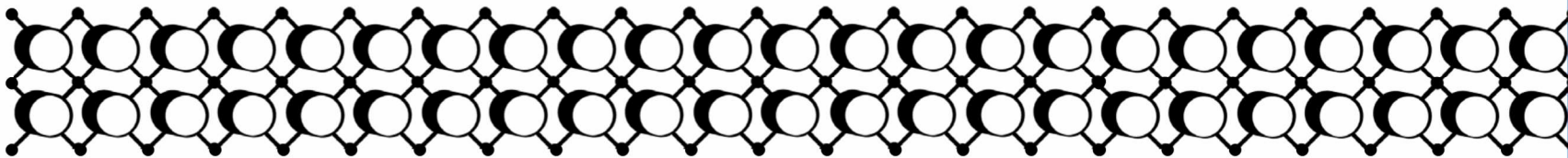


01 - ENLARGED SITE SECTION - WEST BOUNDARY (I-75) | SCALE: 1" = 20'-0"

05/13/2025



APPLICATIONS



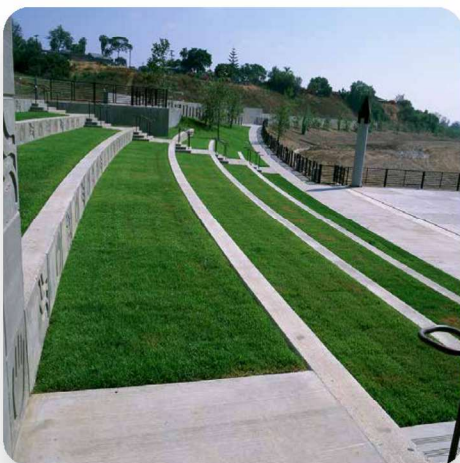
Fire Lanes, Utility & Emergency
Access Roads



Parking Lots



Driveways



Outdoor Event Spaces



Paths & Walkways
The only solution tested for ADA
traction and rotation ability



Ramps, Docks & Loading Areas



Airplane Taxiing Areas



Helicopter Landing Pads

EVOLVE

Area/Site

With all the traffic from employee vehicles and delivery trucks, Current ensures your exterior and parking lot is well-lit to meet recommended light levels, enhancing safety and visibility during evening and overnight hours.

Our sign lighting offers a crisp, clean look that elevates your brand. For delivery trucks, well-lit docks are easier to find and navigate. For your employees and customers, an illuminated parking area reduces fender benders and minimizes theft risks.

Enhance efficiency even more with wireless lighting controls.



EALS

The EALS is ideal for commercial property site-lighting with various mounting options, up to 30,000 lumens and a robust design that allows flexibility.

EALP

The EALP offers a variety optical and lumen packages, with three color temperatures and multiple mounting options for ultimate application flexibility.

E2SD

The Evolve® E2SD LED Security Light is optimized for customers seeking a solution in outdoor work yards, roadside, suburban developments and rural areas.

ERLS

The Evolve® LED Roadway ERLS Setback Luminaire utilizes an advanced LED reflective optical system combined with multiple lighting distributions, mounting options and the ability to tilt. ERLS offers performance in a diverse set of applications ranging from interstates, roadways and parking lots.

Evolve®



CUSTOMER NAME _____

PROJECT NAME _____

DATE _____ TYPE _____

CATALOG NUMBER _____

EALS Series

LED Outdoor Area Light

The EALS Area Light luminaire offers a wide range of optical patterns, color temperatures, lumen packages and mounting configurations to optimize area light applications, as well as provide versatility in lighting design within one form-factor. They are ideal for commercial property site-lighting applications such as retail and commercial exteriors.

Construction

Housing:	Aluminum die cast enclosure. Integral heat sink for maximum heat transfer
Lens:	Impact resistant tempered glass
Paint:	Corrosion resistant polyester powder paint, minimum 2.0 mil thickness Standard = Black, Dark Bronze Gray, White (RAL & custom colors available) Optional = Coastal Finish
Weight:	27 lbs

Optical System

Lumens:	7,000 - 50,000
Photometry:	Type II, III, IV & V
Efficacy:	118-177LPW
CCT:	2700K, 3000K, 4000K, 5000K
CRI:	≥70
Upward Light Output Ratio (ULOR):	0 Horizontal Orientation

Electrical

Input Voltage:	120-277V, 277-480V & 347-480V
Input Frequency:	50/60 Hz
Power Factor (PH):	≥ 0.9 at rated watts
Total Harmonic Distortion (THD):	≤ 20% at rated watts

Surge Protection

6kV/3kA	10kV/5kA	20kV/10kA
---------	----------	-----------

Per ANSI C136.2-2023

Lumen Maintenance

Projected Lxx per IES TM-21-11 at 25°C

OPTICS	LXX(H0K) @ HOURS		
	25,000 HR	50,000 HR	60,000 HR
C2, C3, C4, C5 D2, D3, D4, D5 F2, F3, F4, F5	L99	L97	L96
H2, H3, H4, H5 J2, J3, J4, J5 K2, K3, K4, K5	L98	L96	L96
L2, L3, L4, L5 M2, M3, M4, M5	L96	L93	L91
N2, N3, N4, N5	L94	L85	L82

Note: Projected Lxx based on LM80 (= 17,000 hour testing). Accepted industry tolerances apply to initial luminous flux and lumen maintenance measurements

Luminaire Ambient Temperature Factor

AMBIENT TEMP (°C)	INITIAL FLUX FACTOR	AMBIENT TEMP (°C)	INITIAL FLUX FACTOR
10	1.02	30	0.99
20	1.01	40	0.98
25	1.00		

Ratings

Operating Temperature:	-40°C to 50°C (Nx Optic Codes are -40°C to 40°C)
Vibration:	3G per ANSI C136.31-2010
LM-79:	Testing in accordance with IESNA Standards

Controls

Dimming:	Standard - 0-10V Optional - DALI (Option U)
Sensors:	Photo Electric Sensors (PE) available LightGrid+™ and Daintree Compatible

Warranty

5 Year (Standard)

10 Year (Optional)



