

Repl. 24 R-126
 This is a replat
 from E-47 of
 Tillson's Subdivision
 2-7-84
 Curves C, D, E, F
 Repl. 24 R-125
 15mph

5990

QUAIL CREEK

A REPLAT OF LOTS 3, 4, 5, & 6 OF TILLSON'S SUBDIVISION IN
 SECTION 28, TOWNSHIP 15 SOUTH, RANGE 22 EAST
 MARION COUNTY, FLORIDA

PLAT BOOK W, PAGE 97
 SHEET 2 OF 2 SHEETS

CURVE DATA

CURVE LETTER	RADIUS	DELTA ANGLE	ARC LENGTH	TANGENT	CHORD	CHORD BEARING
A	350.00'	22°45'31"	139.02'	70.44'	138.11'	S 70°27'40" E
B	350.00'	22°45'31"	139.02'	70.44'	138.11'	S 70°27'40" E
C	80.00'	90°00'00"	125.66'	80.00'	113.14'	S 45°00'34" W
D	80.00'	90°00'00"	125.66'	80.00'	113.14'	S 44°50'26" E
E	90.00'	90°00'00"	125.66'	80.00'	113.14'	S 45°09'34" W
F	80.00'	90°00'00"	125.66'	80.00'	113.14'	S 44°50'26" E
G	350.00'	22°45'31"	139.02'	70.44'	138.11'	N 70°46'49" E
H	350.00'	22°45'31"	139.02'	70.44'	138.11'	N 70°46'49" E

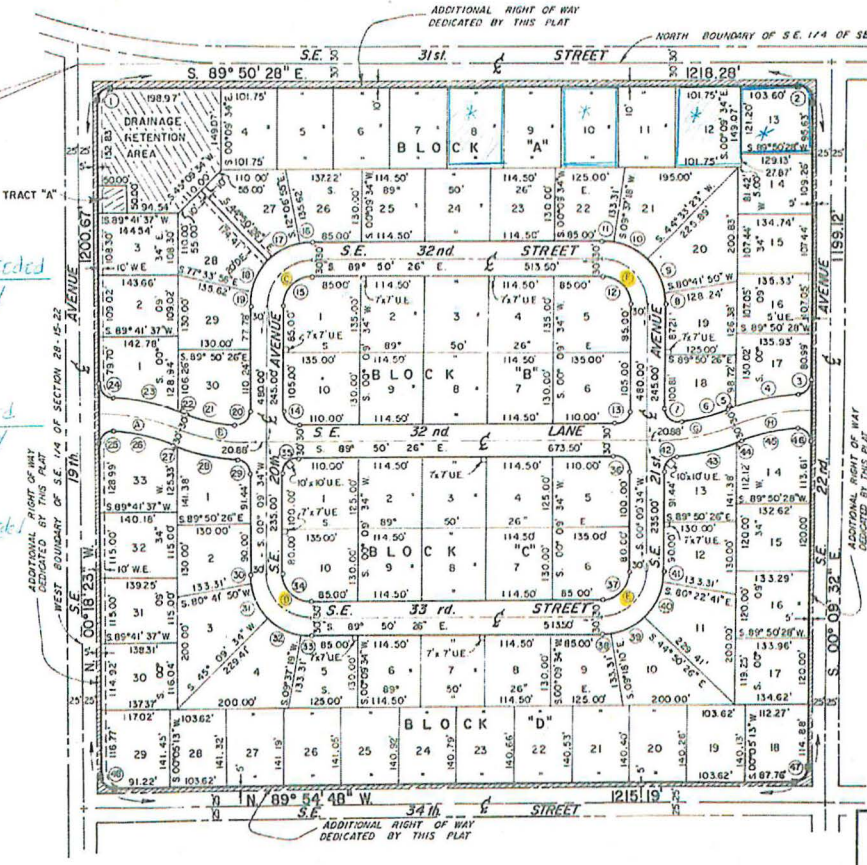
R/W CURVE DATA

CURVE NUMBER	RADIUS	DELTA ANGLE	ARC LENGTH	TANGENT	CHORD	CHORD BEARING
1	25.00'	90°27'56"	39.47'	25.20'	35.50'	S 44°56'35" W
2	25.00'	89°40'56"	39.13'	24.86'	35.20'	S 45°00'00" E
3	25.00'	86°44'12"	37.86'	23.62'	34.33'	S 43°12'34" W
4	380.00'	17°29'56"	118.06'	58.48'	115.61'	S 77°49'42" E
5	380.00'	01°40'40"	11.13'	5.57'	11.13'	S 69°14'24" W
6	320.00'	19°07'03"	90.02'	45.31'	89.72'	S 75°27'35" W
7	25.00'	94°34'27"	42.17'	28.08'	37.34'	S 48°09'40" E
8	110.00'	09°27'44"	18.17'	9.10'	18.15'	S 04°34'18" E
9	110.00'	18°08'27"	38.89'	35.89'	68.24'	S 27°22'28" E
10	110.00'	34°26'05"	67.07'	34.81'	66.04'	S 62°54'39" E
11	110.00'	09°27'44"	18.17'	9.10'	18.15'	S 05°06'36" E
12	50.00'	90°00'00"	78.54'	50.00'	70.71'	S 44°50'26" E
13	25.00'	90°00'00"	39.27'	25.00'	39.36'	S 45°09'34" W
14	25.00'	90°00'00"	39.27'	25.00'	39.36'	S 44°50'26" E
15	50.00'	90°00'00"	78.54'	50.00'	70.71'	S 45°09'34" W
16	110.00'	12°16'29"	23.57'	11.83'	23.52'	S 84°01'20" W
17	110.00'	32°43'31"	62.83'	32.30'	61.98'	S 64°31'20" W
18	110.00'	32°43'31"	62.83'	32.30'	61.98'	S 28°47'48" W
19	110.00'	12°16'29"	23.57'	11.83'	23.52'	S 06°17'49" W
20	25.00'	96°38'08"	42.17'	28.08'	37.34'	S 48°28'46" W
21	320.00'	16°07'03"	90.02'	45.31'	89.72'	S 75°28'27" E
22	380.00'	02°29'02"	16.47'	8.24'	16.47'	S 69°19'26" E
23	380.00'	18°12'55"	120.91'	60.92'	120.50'	S 78°40'24" E
24	25.00'	87°28'28"	38.17'	23.92'	34.57'	S 44°02'37" E
25	25.00'	93°08'05"	40.78'	26.56'	35.41'	S 40°29'40" W
26	320.00'	19°45'23"	110.34'	55.72'	109.72'	S 26°27'36" E
27	380.00'	01°17'01"	8.51'	4.26'	8.51'	S 67°43'25" E
28	380.00'	16°38'34"	110.36'	55.98'	109.99'	S 76°41'13" E
29	25.00'	85°10'04"	37.16'	22.98'	33.85'	S 42°25'28" E
30	110.00'	09°27'44"	18.17'	9.10'	18.15'	S 04°34'18" E
31	110.00'	35°32'16"	68.23'	35.25'	67.14'	S 27°04'18" E
32	110.00'	39°32'16"	68.23'	35.25'	67.14'	S 62°56'34" E
33	110.00'	09°27'44"	18.17'	9.10'	18.15'	S 05°06'36" E
34	59.00'	90°00'00"	78.54'	50.00'	70.71'	S 44°50'26" E
35	25.00'	90°00'00"	39.27'	25.00'	39.36'	S 45°09'34" W
36	25.00'	90°00'00"	39.27'	25.00'	39.36'	S 44°50'26" E
37	50.00'	90°00'00"	78.54'	50.00'	70.71'	S 45°09'34" W
38	110.00'	09°27'44"	18.17'	9.10'	18.15'	S 05°25'42" W
39	110.00'	35°32'16"	68.23'	35.25'	67.14'	S 62°55'42" W
40	110.00'	35°32'16"	68.23'	35.25'	67.14'	S 27°23'26" W
41	110.00'	09°27'44"	18.17'	9.10'	18.15'	S 04°53'26" W
42	25.00'	85°10'04"	37.16'	22.98'	33.85'	S 42°44'38" W
43	380.00'	16°38'34"	110.38'	55.98'	109.99'	S 77°00'21" W
44	380.00'	01°17'01"	8.51'	4.26'	8.51'	S 68°02'34" W
45	320.00'	17°57'28"	100.30'	50.56'	99.89'	S 76°22'47" W
46	25.00'	94°28'57"	41.23'	27.04'	36.71'	S 47°24'00" E
47	25.00'	90°14'45"	39.38'	25.11'	35.43'	S 44°57'50" W
48	25.00'	89°36'24"	39.10'	24.83'	35.23'	S 45°05'35" E

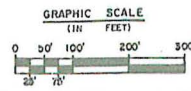
* L112 Blk "A" Decided
 TO MARION COUNTY
 O.R. 1692/508
 1-22-07

* L18 Blk "A" Decided
 TO MARION COUNTY
 O.R. 1691/538
 1-17-07

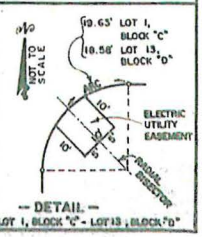
* L113 Blk "A" Decided
 TO MARION COUNTY
 O.R. 1727/1128
 2-28-07



* L113 Blk "A"
 CONVEYS TO MARION
 COUNTY O.R. 1894/716
 3-7-07



- LEGEND:**
- C CENTERLINE
 - DE DRAINAGE EASEMENT
 - WE WIDENING EASEMENT (FOR DRAINAGE, UTILITIES, AND RIGHT OF WAY)
 - OC CENTERLINE CURVE IDENTIFICATION
 - OR RIGHT-OF-WAY CURVE IDENTIFICATION
 - R/W RIGHT-OF-WAY
 - UE UTILITY EASEMENT
 - UE ELECTRIC UTILITY EASEMENT



PREPARED BY
Alvin T. Gloer
 LAND SURVEYORS, INC.
 1000 CENTER ROAD, S.W.
 TALLAHASSEE, FLORIDA 32304
 TELEPHONE 904.224.2400
 FACSIMILE 904.224.2401

W-97

QUAIL CREEK

A REPLAT OF LOTS 3, 4, 5, & 6 OF TILLSON'S SUBDIVISION IN SECTION 28, TOWNSHIP 15 SOUTH, RANGE 22 EAST MARION COUNTY, FLORIDA

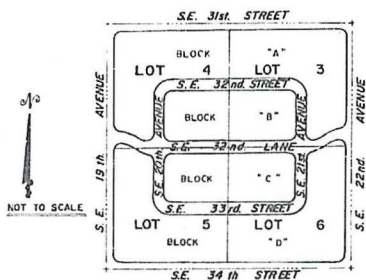
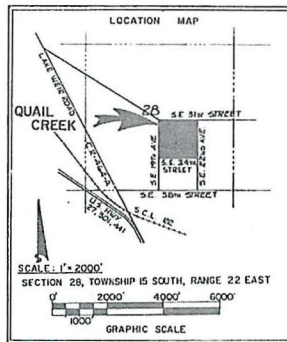
SHEET 1 OF 2 SHEETS

NOTES:

- UTILITY EASEMENTS ARE SHOWN BY DASHED LINES ON THE ATTACHED PLAT. ALL UTILITY COMPANIES SERVING THE PUBLIC AND GOVERNMENTAL AGENCIES ARE GRANTED THE RIGHT TO INSTALL AND MAINTAIN UTILITIES AND DRAINAGE FACILITIES IN THE EASEMENTS.
- BEARINGS ARE BASED ON AN ASSUMED MERIDIAN.
- ⊠ INDICATES PERMANENT REFERENCE MONUMENT (PRM)
- INDICATES PERMANENT CONTROL POINT (P.C.P.) (TO BE SET WITHIN 1 YEAR FROM DATE THIS PLAT IS RECORDED.)
- NO LOT OR TRACT AS SHOWN ON THIS PLAT SHALL BE DIVIDED OR RE-SUBDIVIDED UNLESS PORTIONS THEREOF ARE USED TO INCREASE THE SIZE OF ADJACENT LOTS AS PLATTED.
- ALL RADII ARE 25 FEET UNLESS OTHERWISE SHOWN.
- APPLICATIONS FOR SEPTIC TANK SYSTEMS SHALL BE CONSIDERED ON A LOT BY LOT BASIS EACH DEPENDENT ON ITS OWN MERITS. INSTALLATION SHALL BE SUBJECT TO REGULATIONS IN EFFECT AT THE TIME OF INSTALLATION.
- THIS PLAT CONTAINS 03 LOTS, 0.71 MILES OF ROADS AND 36.4 ACRES MORE OR LESS.

DESCRIPTION:

LOTS 3, 4, 5, & 6 OF TILLSON'S SUBDIVISION AS RECORDED IN PLAT BOOK "E", PAGE "47" OF THE PUBLIC RECORDS OF MARION COUNTY, FLORIDA, EXCEPT THE NORTH 1500 FEET FOR ROAD RIGHT OF WAY.



DETAIL SHOWING RELATION OF LOTS 3, 4, 5, & 6 OF TILLSON'S SUBDIVISION TO QUAIL CREEK.

PREPARED BY

Alvin T. Gloer

LAND SURVEYORS, INC.
 1100 S.W. 11th St., Ft. Lauderdale, Florida 33304
 TELEPHONE: (305) 555-2500
 TELETYPE: (305) 555-2500

SURVEYORS CERTIFICATE:

I HEREBY CERTIFY THAT THIS PLAT OF QUAIL CREEK IS A TRUE AND CORRECT REPRESENTATION OF THE LAND AS RECENTLY SURVEYED AND PLATTED UNDER MY DIRECTION, THAT THE PERMANENT REFERENCE MONUMENTS AS SHOWN HEREON WERE IN PLACE ON THE 27th DAY OF July 1984, AND THAT THIS PLAT COMPLIES WITH THE REQUIREMENTS OF CHAPTER 177, FLORIDA STATUTES, AND CHAPTER 21 III-6, FLORIDA ADMINISTRATIVE CODE.

Alvin T. Gloer
 ALVIN T. GLOER
 PROFESSIONAL LAND SURVEYOR
 FLORIDA CERTIFICATE NO. 2392

SEAL

CLERK'S ACCEPTANCE:

I HEREBY CERTIFY THAT THE ATTACHED PLAT CONFORMS WITH THE PROVISIONS OF CHAPTER 177, FLORIDA STATUTES, AND THAT SAID PLAT WAS FILED FOR RECORD IN PLAT BOOK 37, AT PAGES 21677, OF THE PUBLIC RECORDS OF MARION COUNTY, FLORIDA, AT 1:21 P.M. ON August 7, 1984.

BY Frances E. Thiopin
 FRANCES E. THIOPIN
 CLERK OF CIRCUIT COURT

APPROVAL OF OFFICIALS:

APPROVED:

BY J.D. Lott
 COUNTY ENGINEERING DEPARTMENT

BY Albert E. Peek
 COUNTY ZONING DEPARTMENT

BY Manuel A. Higgins
 COUNTY PLANNING DEPARTMENT

BY Bruce Bartlett
 COUNTY ENVIRONMENTAL HEALTH DEPARTMENT

BY W.C. Ray III
 COUNTY PUBLIC WORKS DEPARTMENT

THE BOARD OF COUNTY COMMISSIONERS OF MARION COUNTY, FLORIDA, DOES HEREBY APPROVE THIS PLAT FOR RECORDING IN THE PUBLIC RECORDS AND ACCEPTS THE FOREGOING DEDICATION.

ATTEST: Frances E. Thiopin
 FRANCES E. THIOPIN
 CLERK OF CIRCUIT COURT

BY Bruce Bartlett
 MURRAY E. FUGATE BY BRUCE BARTLETT
 VICE CHAIRMAN OF THE BOARD

NOTICE:

THE BOARD OF COUNTY COMMISSIONERS OF MARION COUNTY, FLORIDA, AS A CONDITION PRECEDENT TO THE ACCEPTANCE OF THIS PLAT FOR RECORDING IN THE PUBLIC RECORDS, DOES HEREBY NOTIFY ALL PRESENT AND FUTURE OWNERS OF PROPERTY SHOWN ON THIS PLAT THAT THE LANDS INCLUDED IN THIS PLAT ARE SUBJECT TO ASSESSMENTS AS MAY BE PERMITTED BY LAW TO FINANCE COST INCURRED IN CONNECTION WITH THE MAINTENANCE, OPERATION AND CONSTRUCTION OF A CENTRAL WATER AND SEWER SYSTEM WHEN, IN THE OPINION OF SAID BOARD OR OTHER GOVERNING BODY HAVING JURISDICTION, SUCH FACILITIES BECOME NECESSARY IN ORDER TO PROTECT THE ENVIRONMENT AND THE HEALTH, SAFETY AND WELFARE OF THE GENERAL PUBLIC.

BY Bruce Bartlett
 MURRAY E. FUGATE BY BRUCE BARTLETT
 VICE CHAIRMAN OF THE BOARD OF COUNTY COMMISSIONERS

SEAL

DEVELOPER'S ACKNOWLEDGMENT AND DEDICATION:

KNOW ALL MEN BY THESE PRESENTS, THAT QUAIL CREEK, INC., A FLORIDA CORPORATION, HAS CAUSED TO BE MADE THE ATTACHED PLAT OF QUAIL CREEK THE SAME BEING A RE-SUBDIVISION OF THE LAND HEREON DESCRIBED AND THAT THE AVENUES, STREETS, LANE, WATER RETENTION AREA, AND WIDENING EASEMENT AS SHOWN ON THE ATTACHED PLAT TOGETHER WITH ALL IMPROVEMENTS THEREON ARE HEREBY DEDICATED TO THE PERPETUAL USE OF THE PUBLIC FOR PROPER PURPOSES RESERVING UNTO THEMSELVES, THEIR SUCCESSORS OR ASSIGNS THE REVERSION OR REVERSIONS THEREOF WHENEVER DISCONTINUED BY LAW, AND THAT THE EASEMENTS AS SHOWN HEREON ARE RESERVED AND GRANTED FOR THE PURPOSES AS SHOWN, AND THAT TRACT "A" IS DEDICATED TO MARION COUNTY FOR USE AS A FUTURE LIFT STATION SITE. IN WITNESS WHEREOF THE SAID QUAIL CREEK, INC., HAS CAUSED THESE PRESENTS TO BE SIGNED IN ITS CORPORATE NAME BY ITS PRESIDENT AND SECRETARY, AND ITS CORPORATE SEAL TO BE HEREUNTO AFFIXED BY ITS SECRETARY ON THIS 3rd DAY OF July 1984, ALL BY AND WITH THE AUTHORITY OF THE BOARD OF DIRECTORS OF SAID CORPORATION.

BY Albert E. Peek
 ALBERT E. PEEK, SECRETARY

BY W.C. Ray III
 W.C. RAY III, PRESIDENT

NOTARY ACKNOWLEDGMENT:

STATE OF FLORIDA
 COUNTY OF MARION

BEFORE ME THIS DAY PERSONALLY APPEARED WC RAY III AND ALBERT E. PEEK, AS PRESIDENT AND SECRETARY RESPECTIVELY OF QUAIL CREEK, INC. TO ME WELL KNOWN TO BE THE PERSONS DESCRIBED IN AND WHO EXECUTED THE FOREGOING INSTRUMENT, AND WHO ACKNOWLEDGED THAT THEY DID SO AS OFFICERS OF SAID CORPORATION ALL BY AND WITH THE AUTHORITY OF THE BOARD OF DIRECTORS OF SAID CORPORATION.

DATE: July 3, 1984
 MY COMMISSION EXPIRES Feb. 26, 1988

BY Barnett S. Robinson
 NOTARY PUBLIC
 STATE OF FLORIDA AT LARGE

CONSENT OF MORTGAGEE:

KNOW ALL MEN BY THESE PRESENTS, THAT BARNETT BANK OF MARION COUNTY, N.A., A FLORIDA CORPORATION, THE OWNER AND HOLDER OF THAT CERTAIN MORTGAGE DATED DECEMBER 1, 1983 AND RECORDED IN OFFICIAL RECORDS BOOK 1190 AT PAGE 0476 OF THE PUBLIC RECORDS OF MARION COUNTY, FLORIDA, ENCUMBERING THE PROPERTY DESCRIBED HEREON, DOES HEREBY CONSENT TO THIS PLAT AND JOINS IN THE ABOVE DEDICATION. IN WITNESS WHEREOF SAID CORPORATION HAS CAUSED THESE PRESENTS TO BE SIGNED IN ITS CORPORATE NAME BY ITS SENIOR VICE PRESIDENT AND ASSISTANT CASHIER, AND ITS CORPORATE SEAL HEREUNTO AFFIXED BY ITS ASSISTANT CASHIER ALL BY AND WITH THE AUTHORITY OF THE BOARD OF DIRECTORS OF SAID CORPORATION. ON THIS 11th DAY OF July 1984.

ATTEST: Linda S. Fulford
 LINDA S. FULFORD, ASSISTANT CASHIER

BY Robert A. Ellnor
 ROBERT A. ELLNOR, SENIOR VICE PRESIDENT

NOTARY ACKNOWLEDGMENT:

STATE OF FLORIDA
 COUNTY OF MARION

BEFORE ME THIS DAY PERSONALLY APPEARED ROBERT A. ELLNOR AND LINDA S. FULFORD AS SENIOR VICE PRESIDENT AND ASSISTANT CASHIER RESPECTIVELY OF BARNETT BANK OF MARION COUNTY, N.A. TO ME WELL KNOWN TO BE THE PERSONS DESCRIBED IN AND WHO EXECUTED THE FOREGOING INSTRUMENT, AND WHO ACKNOWLEDGED THAT THEY DID SO AS OFFICERS OF SAID CORPORATION.

DATE: July 11, 1984
 MY COMMISSION EXPIRES: May 29, 1988

BY Niomi Cataldo
 NOTARY PUBLIC
 STATE OF FLORIDA AT LARGE

W-96