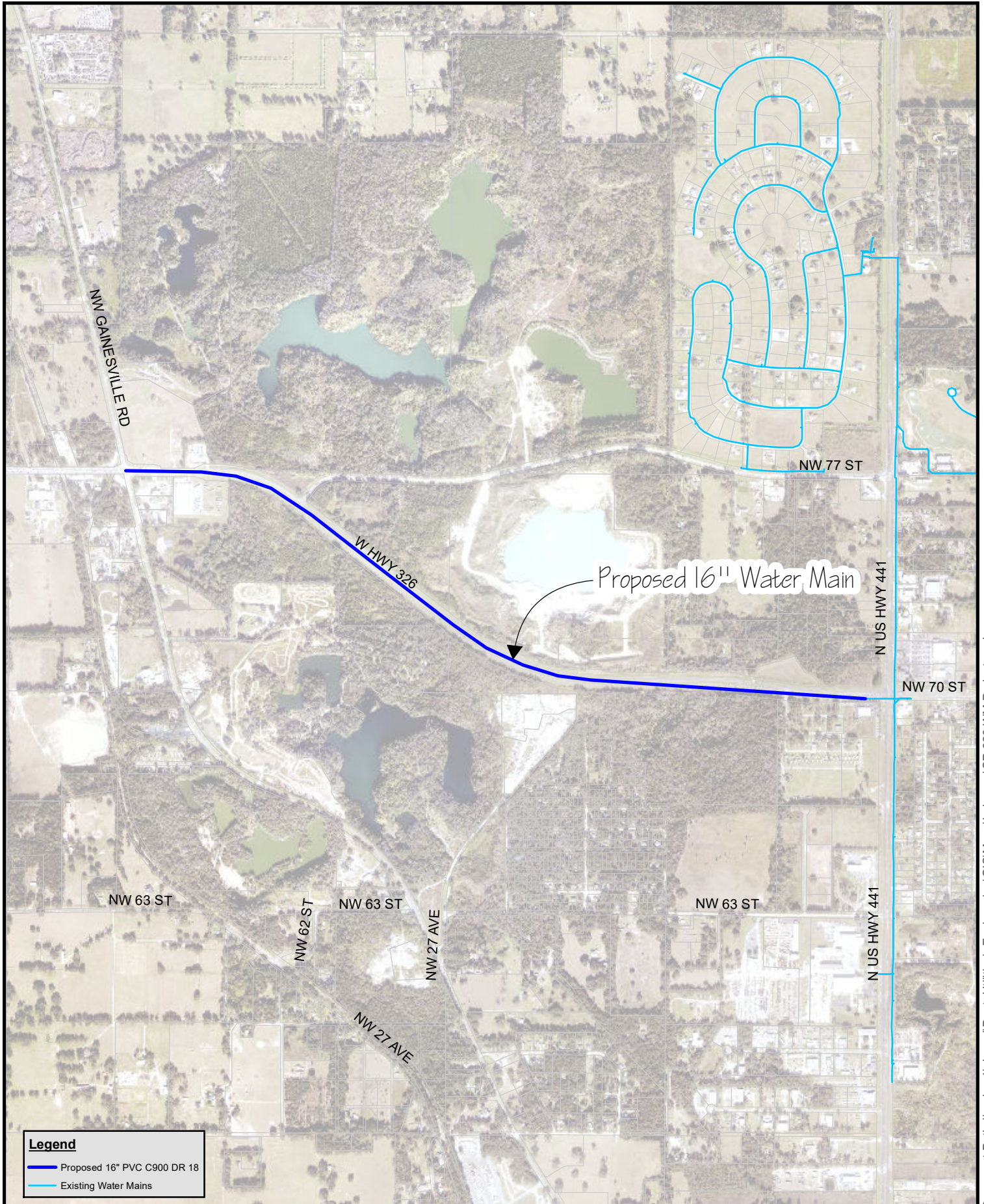


# SR 326 Water Main - From US Hwy 441 to CR 25A



## Legend

- Proposed 16" PVC C900 DR 18
- Existing Water Mains



Marion County Board of  
County Commissioners  
Utilities Department

Created By: Renee O'Donnell

Date Saved: 8/11/2025

Reference Scale: 1" = 1,500'

Approved By: TC

"All data, information, and maps are provided 'as is' without warranty or any representation of accuracy, timeliness, or completeness. The user acknowledges and accepts all limitations, including the fact that the data, information, and maps are dynamic and for a limited state of maintenance, correction and update." The user shall be responsible for the results and performance of any information obtained from Marion County. AGREE THAT THERE ARE NO REMEDIES FOR BREACH OF WARRANTY OR CONTRACT INCLUDING, BUT NOT LIMITED TO CONSEQUENTIAL, INDIRECT, PUNITIVE OR INCIDENTAL DAMAGES.

**MCU Proposed Construction based  
on \$3.5m State Appropriations**

