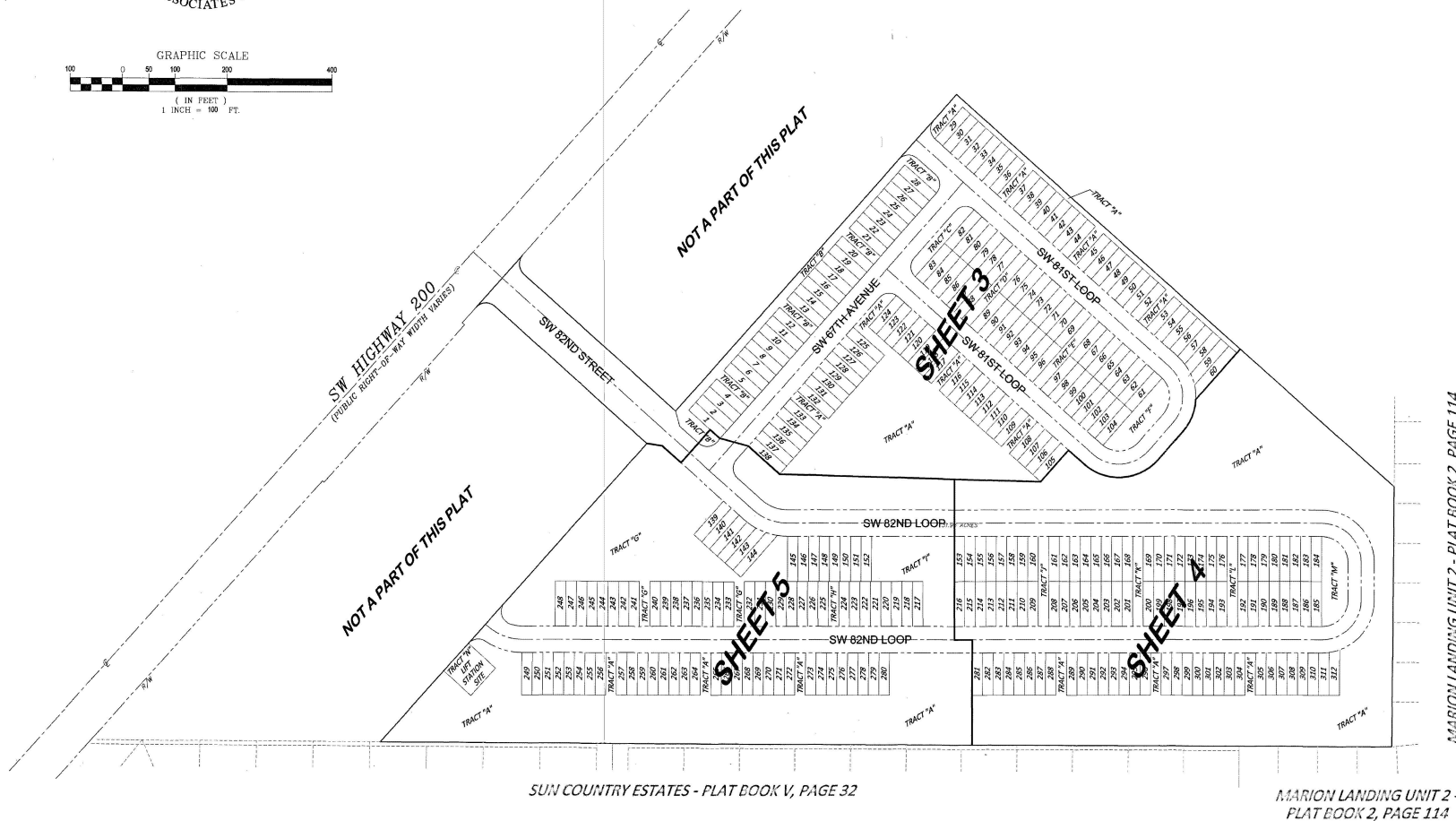


LAUREL COMMONS

A PLANNED UNIT DEVELOPMENT
AND
A PORTION OF SECTION 17, TOWNSHIP 16 SOUTH, RANGE 21 EAST,
MARION COUNTY, FLORIDA

PLAT BOOK 15 PAGE 131

SHEET 2 OF 5



PREPARED BY
A.M. GAUDET & ASSOCIATES INC.
LAND SURVEYING - LAND PLANNING
4709 SE 102ND PLACE SUITE 3 BELLEVUE, FLORIDA 34420
PHONE (352) 245-2708 FAX (352) 245-2683

SHEET INDEX

A PLANNED UNIT DEVELOPMENT
AND
A PORTION OF SECTION 17, TOWNSHIP 16 SOUTH, RANGE 21 EAST,
MARION COUNTY, FLORIDA

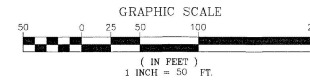


SHEET 3 OF 5

□ = SET 4" x 4" CONCRETE MONUMENT "PRM LS 5316"
 ⊙ = SET NAIL WITH DISK "LS 5316 PCP" UNLESS OTHERWISE NOTED
 ○ = SET 5/8" IRON ROD WITH CAP "LS 5316 PRM" UNLESS OTHERWISE NOTED

R/W = RIGHT OF WAY
PCU = POINT OF CUSP
PC = POINT OF CURVE
PT = POINT OF TANGENCY
SF = SQUARE FEET
UD = UTILITY AND DRAINAGE EASEMENT

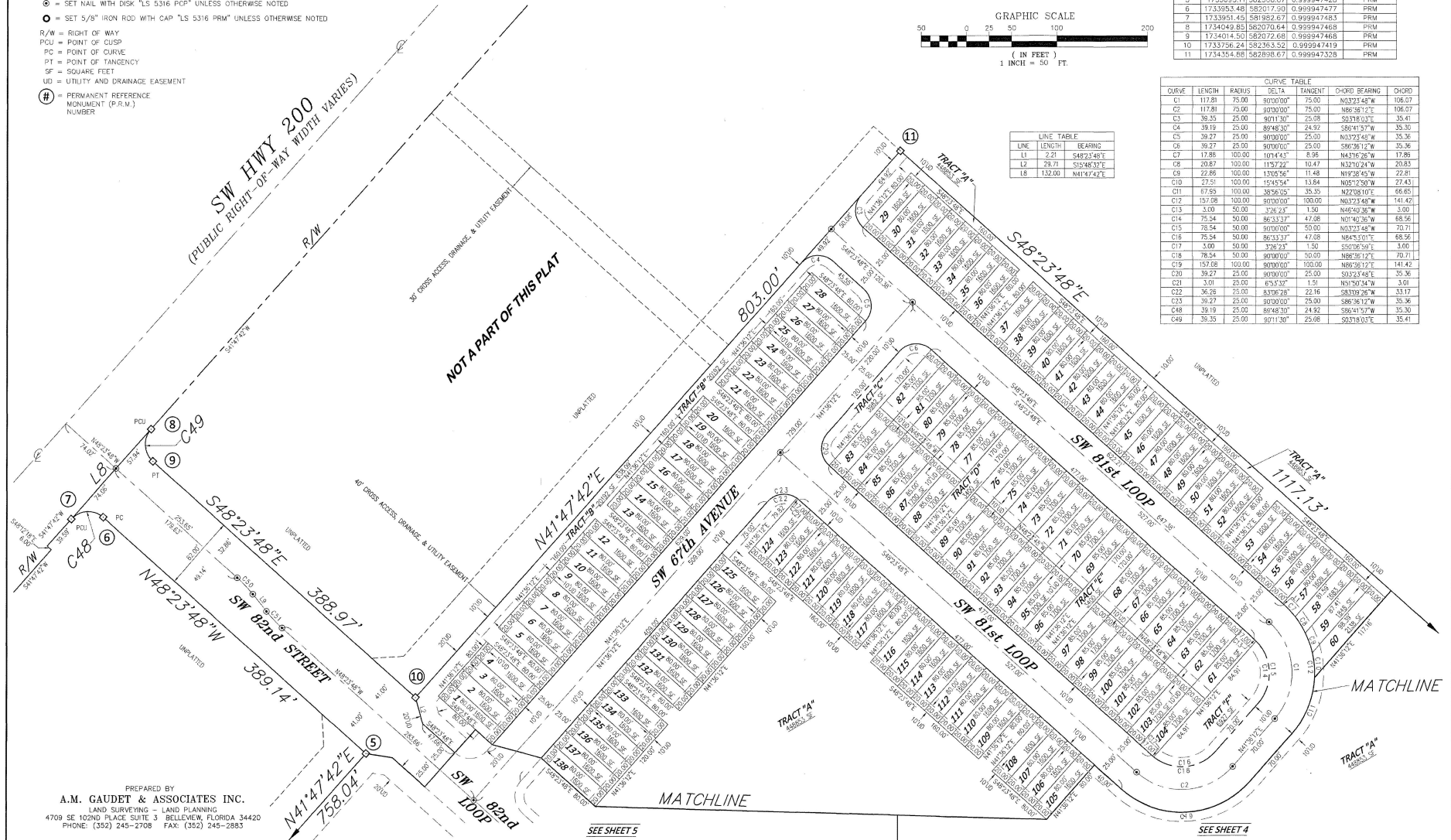
① = PERMANENT REFERENCE
MONUMENT (P.R.M.)
NUMBER



STATE PLANE		COORDINATES		DESCRIPTION
POINT	NORTHING	EASTING	SCALE FACTOR	
5	1733695.11	582308.87	0.999947428	PRM
6	1733953.48	582017.90	0.999947477	PRM
7	1733951.45	581982.67	0.999947483	PRM
8	1734049.85	582070.64	0.999947468	PRM
9	1734014.50	582072.68	0.999947468	PRM
10	1733756.24	582363.52	0.999947419	PRM
11	1734354.88	582898.67	0.999947328	PRM

CURVE DATA						
CURVE	LENGTH	RADIUS	DETA	TANGENT	CHORD BEARING	CHORD
C1	111.81	25.00	90.000°	75.00	N53°23'48"E	106.67
C2	72.82	25.00	90.000°	25.00	N84°51'27"E	69.67
C3	35.95	25.00	90.013°	25.00	S03°01'03"E	35.41
C4	39.19	25.00	89.948°	24.92	S84°51'47"E	35.30
C5	39.19	25.00	90.000°	24.92	S84°51'47"E	35.30
C6	29.27	25.00	90.000°	25.00	S86°36'12"E	25.36
C7	10.88	100.00	101.044°	8.95	N43°56'16"E	17.88
C8	27.89	100.00	117.572°	14.67	N32°02'24"E	20.83
C9	22.12	100.00	120.000°	14.67	N32°02'24"E	17.68
C10	27.51	100.00	154.954°	13.84	N05°22'00"E	27.43
C11	67.95	100.00	35.956°	35.35	N72°08'16"E	66.65
C12	157.58	100.00	90.000°	100.00	N53°23'48"E	141.42
C13	42.14	50.00	90.000°	42.14	N84°51'27"E	39.67
C14	75.94	50.00	86.333°	47.08	N04°30'36"E	68.56
C15	75.94	50.00	90.000°	100.00	N53°23'48"E	70.71
C16	75.94	50.00	86.333°	47.08	N84°51'27"E	68.56
C17	42.14	50.00	90.000°	42.14	N84°51'27"E	39.67
C18	75.94	50.00	90.000°	100.00	N86°36'12"E	70.71
C19	157.58	100.00	90.000°	100.00	N53°26'12"E	141.42
C20	39.27	25.00	90.000°	25.00	S03°01'03"E	35.36
C21	39.27	25.00	90.000°	25.00	S84°51'47"E	35.36
C22	36.25	25.00	83.967°	22.16	S83°09'26"E	33.17
C23	39.27	25.00	90.000°	25.00	S86°36'12"E	35.36
C24	39.19	25.00	90.000°	25.00	S84°51'47"E	35.30
C25	36.25	25.00	90°13'30"	25.06	S03°01'03"E	35.41

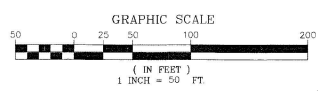
LINE TABLE		
LINE	LENGTH	BEARING
L1	2.21	S48°23'48"
L2	29.71	S15°48'32"
L8	132.00	N41°47'42"



PREPARED BY
A.M. GAUDET & ASSOCIATES INC.
LAND SURVEYING - LAND PLANNING
4709 SE 102ND PLACE SUITE 3 BELLEVUE, FLORIDA 34420
PHONE: (352) 245-2708 FAX: (352) 245-2883

LAUREL COMMONS

A PLANNED UNIT DEVELOPMENT
AND
A PORTION OF SECTION 17, TOWNSHIP 16 SOUTH, RANGE 21 EAST,
MARION COUNTY, FLORIDA



POINT OF REFERENCE
NE CORNER OF THE NW 1/4 OF SECTION 17,
TOWNSHIP 16 SOUTH, RANGE 21 EAST
FOUND OCTAGONAL CONCRETE COUNTY
MONUMENT

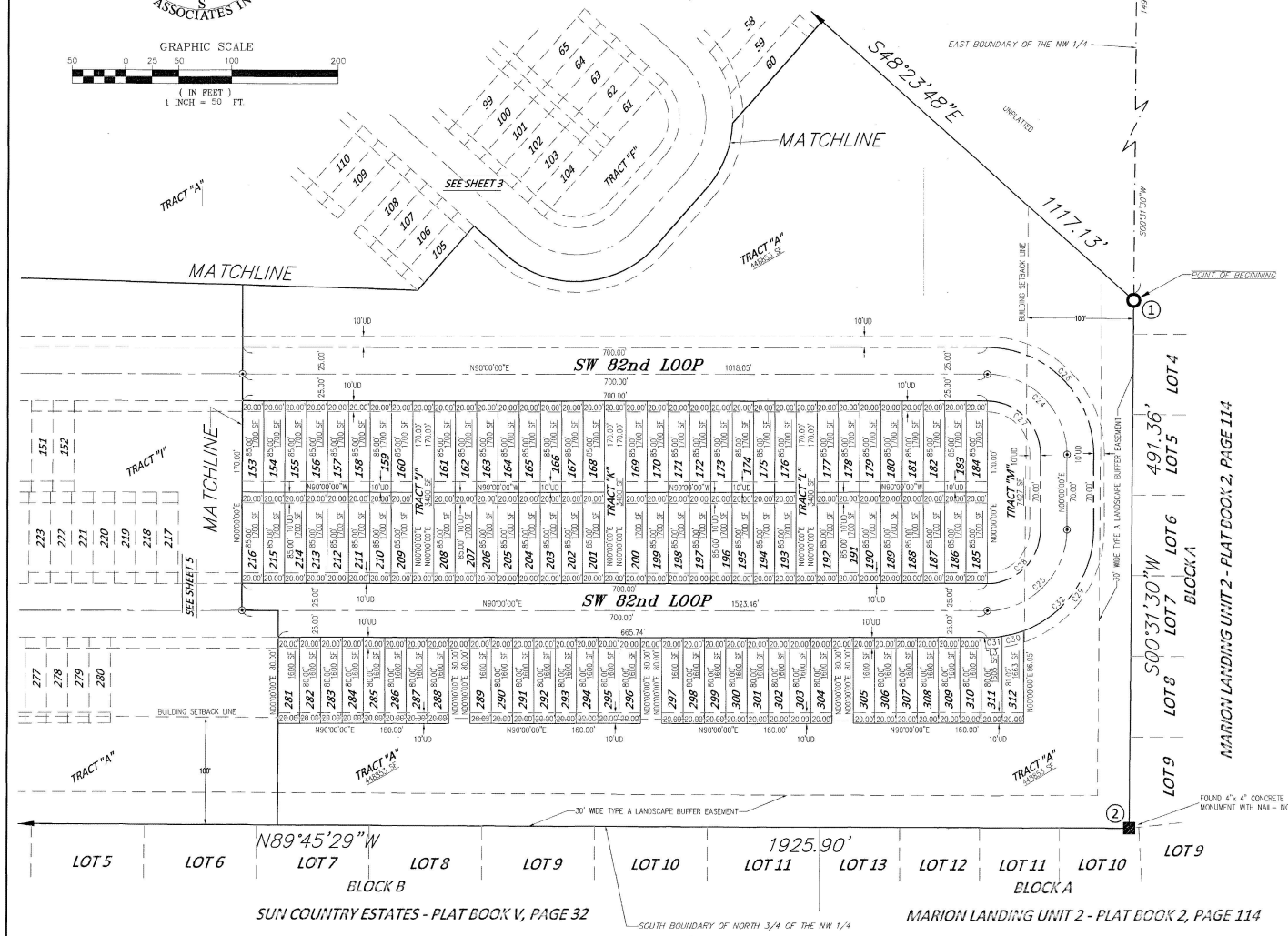
POINT	NORTHING	EASTING	SCALE FACTOR	DESCRIPTION
1	1733613.17	583733.97	0.999947189	PRM
2	1733121.87	583729.47	0.999947189	PRM

LINE	LENGTH	BEARING
L3	5.74	N90°00'00"W

CURVE	LENGTH	RADIUS	DELTA	TANGENT	CHORD BEARING	CHORD
C24	117.81	75.00	90°00'00"	75.00	N45°00'00"W	105.07
C25	117.81	75.00	90°00'00"	75.00	N45°00'00"E	105.07
C26	157.08	100.00	90°00'00"	100.00	N45°00'00"W	141.42
C27	78.54	50.00	90°00'00"	50.00	N45°00'00"W	70.71
C28	78.54	50.00	90°00'00"	50.00	N45°00'00"E	70.71
C29	122.11	100.00	89°57'43"	69.97	N79°52'50"E	114.66
C30	20.66	100.00	11°50'14"	10.37	N82°53'39"E	20.62
C31	14.31	100.00	8°12'03"	7.17	N82°53'39"E	14.30
C32	157.08	100.00	90°00'00"	100.00	N45°00'00"E	141.42

LEGEND:

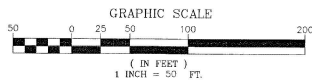
- = SET 4" x 4" CONCRETE MONUMENT "PRM LS 5316"
- ⊙ = SET NAIL WITH DISK "LS 5316 POP" UNLESS OTHERWISE NOTED
- ⊙ = SET 5/8" IRON ROD WITH CAP "LS 5316 PRM" UNLESS OTHERWISE NOTED
- sq = SQUARE FEET
- UD = UTILITY AND DRAINAGE EASEMENT
- ⊕ = PERMANENT REFERENCE MONUMENT (P.R.M.) NUMBER



PREPARED BY
A.M. GAUDET & ASSOCIATES INC.
LAND SURVEYING - LAND PLANNING
4709 SE 102ND PLASS SUITE 3 BELLEVUE, FLORIDA 34420
PHONE: (352) 245-2708 FAX: (352) 245-2883

SUN COUNTRY ESTATES - PLAT BOOK V, PAGE 32

MARION LANDING UNIT 2 - PLAT BOOK 2, PAGE 114



POINT	NORTHING	EASTING	SCALE FACTOR	DESCRIPTION
3	1733126.09	582729.53	0.999947357	PRM
4	1733130.00	581803.69	0.999947514	PRM
5	1733595.11	582508.87	0.999947428	PRM
10	1733756.24	58253.52	0.999947419	PRM

LINE	LENGTH	BEARING
L4	4.23	N48°12'18"W
L5	9.00	S41°36'12"E
L6	34.00	S41°36'12"E
L7	29.69	S81°02'48"E

CURVE	LENGTH	RADIUS	DELTA	TANGENT	CHORD BEARING	CHORD
C33	72.61	100.00	41°36'12"	37.99	S69°11'54"E	71.03
C34	72.95	100.00	41°47'42"	38.18	S69°06'02"E	71.34
C35	35.27	25.00	90°00'00"	25.00	N88°36'12"E	35.36
C36	38.27	25.00	90°00'00"	25.00	S102°48'E	38.36
C37	54.46	75.00	41°36'12"	28.49	S69°11'54"E	53.27
C38	7.03	125.00	3°13'21"	3.52	S50°00'28"E	7.03
C39	20.21	125.00	9°55'51"	10.13	S56°15'04"E	20.19
C40	20.97	125.00	9°28'45"	10.58	S63°01'23"E	20.95
C41	22.53	125.00	10°19'33"	11.30	S75°39'34"E	22.50
C42	20.02	125.00	8°10'38"	10.03	S85°24'41"E	20.00
C43	80.78	125.00	41°26'12"	47.49	S67°11'54"E	80.78
C44	49.98	25.00	114°30'41"	38.80	S17°28'42"E	42.00
C45	22.58	75.00	17°45'50"	11.38	S81°22'33"E	22.49
C46	73.82	125.00	35°50'07"	38.02	S73°04'56"E	72.75
C47	33.80	25.00	82°02'25"	21.75	S82°48'55"W	32.82

LAUREL COMMONS

A PLANNED UNIT DEVELOPMENT
AND
A PORTION OF SECTION 17, TOWNSHIP 16 SOUTH, RANGE 21 EAST,
MARION COUNTY, FLORIDA

PLAT BOOK 15 PAGE 134

SHEET 5 OF 5

