

McPherson Governmental Campus Auditorium, 601 SE 25th Ave, Ocala, FL 34471

Marion County Vulnerability Assessment Public Presentation

Marion County Board of County Commissioners (BOCC)

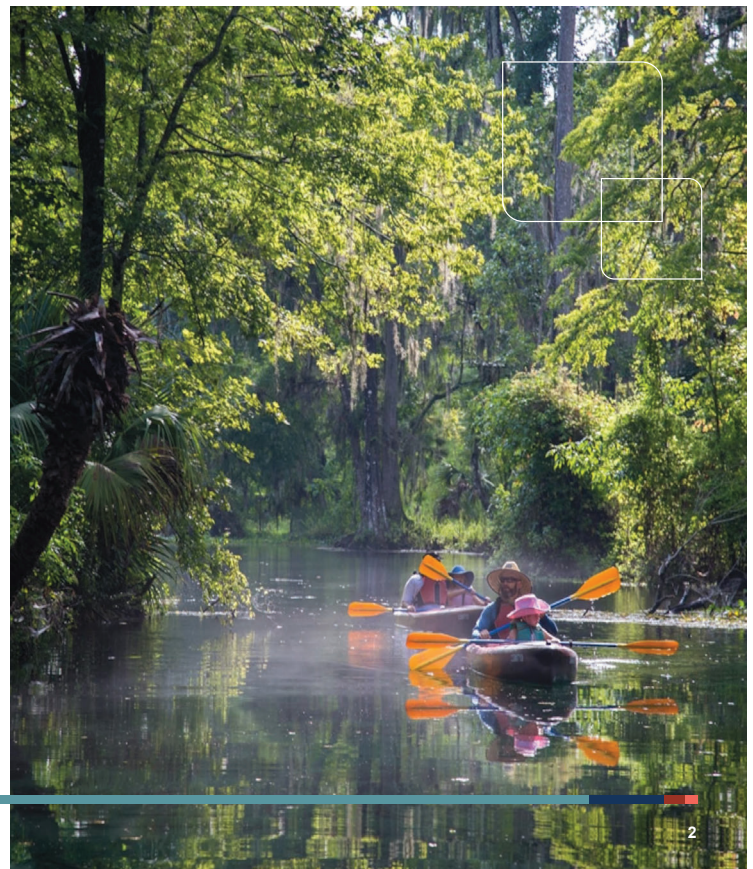
July 1, 2025

 CONNECT WITH US. LIKE US. FOLLOW US.

halff.com

BACKGROUND

- County Received FY2023 Resilient Florida funding for a Vulnerability Assessment (VA).
- 100% funded by FDEP; meets requirements set forth in Section 380.093, Florida Statutes.
- Developed between 2024 and 2025 with input from Marion County staff and the public.
- Leveraged and updated existing watershed models.
- Focuses on unincorporated areas and excludes Ocala and Belleview who are conducting separate assessments.
- Opens more opportunities for project prioritization and grant funding and ensures state regulatory compliance.



RESILIENT FLORIDA PROGRAM GRANTS



PLANNING GRANTS

\$20M (Annually)*



IMPLEMENTATION GRANTS

\$100M (Annually)*



REGIONAL GRANTS

\$2M (Annually)*

*Approximate/Minimum Funding Levels**

PROJECT GOALS

- Identify and catalog publicly available Geographic Information Systems (GIS) data applicable to critical and regionally significant assets, topographic conditions, and flood scenarios.
- Evaluate exposure and sensitivity of publicly-owned and/or maintained critical assets against each current and future flood scenario.
- Develop exposure maps to guide infrastructure and community investment decisions.
- Evaluate sensitivity of flooding to critical assets and prioritize capital improvements.
- Inform priorities for adaptation and implementation projects.



SECTION 380.093 F.S. (CRITICAL ASSETS)

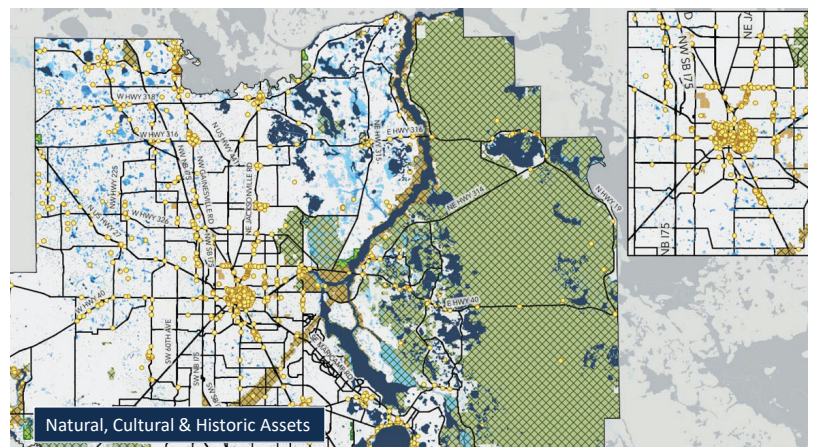
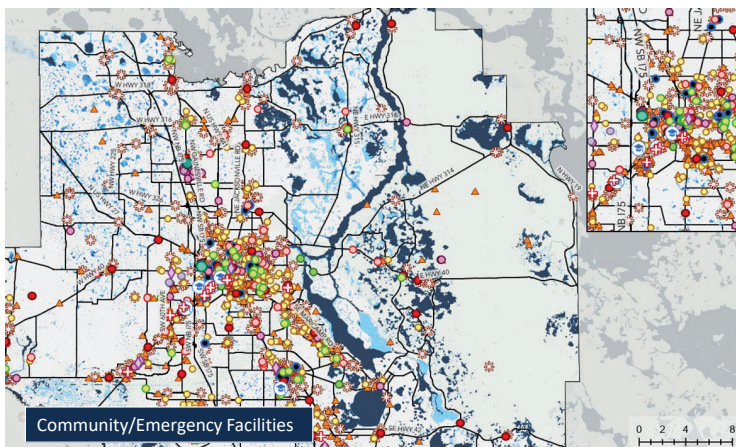
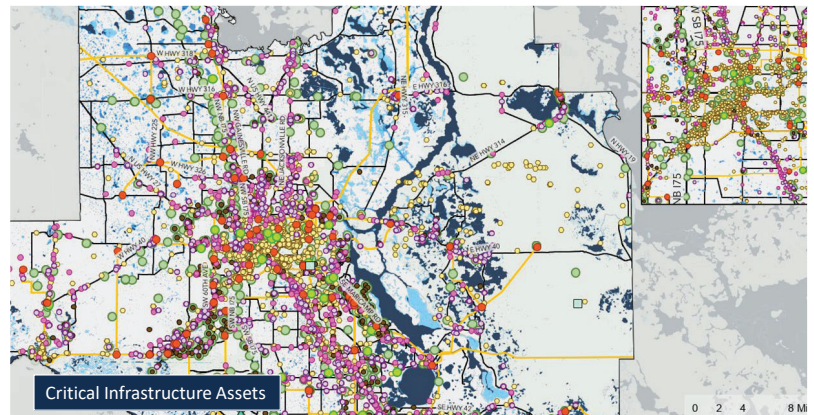
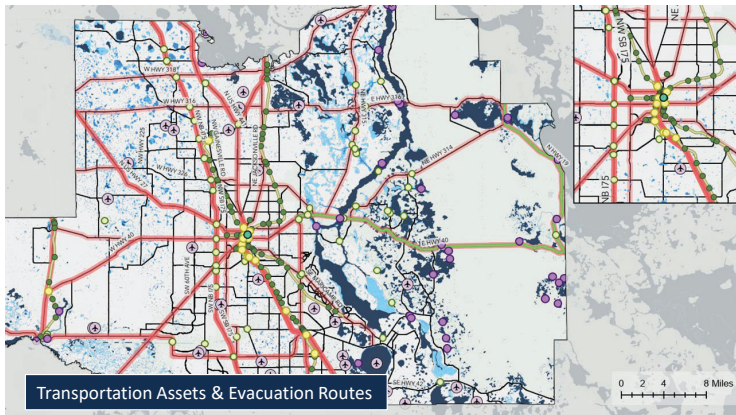
- **Transportation assets and evacuation routes**, including airports, bridges, bus terminals, ports, major roadways, marinas, rail facilities, and railroad bridges
- **Critical infrastructure**, including wastewater treatment facilities and lift stations, stormwater treatment facilities and pump stations, drinking water facilities, water utility conveyance systems, electric production and supply facilities, solid and hazardous waste facilities, military installations, communications facilities, and disaster debris management sites
- **Critical community and emergency facilities**, including schools, colleges, universities, community centers, correctional facilities, disaster recovery centers, emergency medical service facilities, emergency operation centers, fire stations, health care facilities, hospitals, law enforcement facilities, local government facilities, logistical staging areas, affordable public housing, risk shelter inventory, and state government facilities
- **Natural, cultural, and historical resources**, including conservation lands, parks, shorelines, surface waters, wetlands, and historical and cultural assets

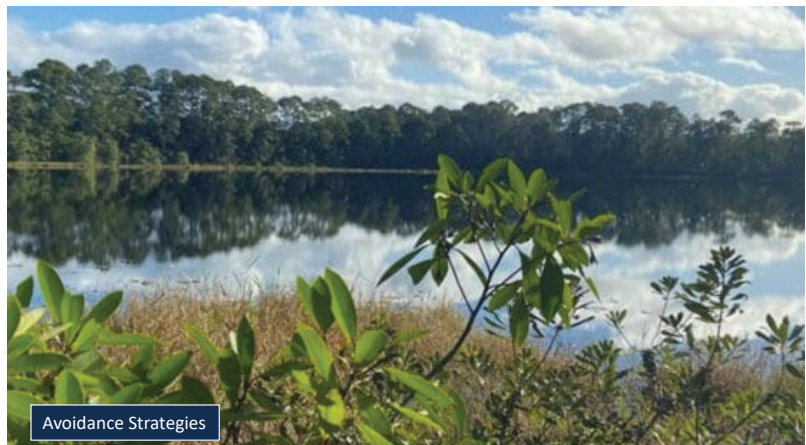
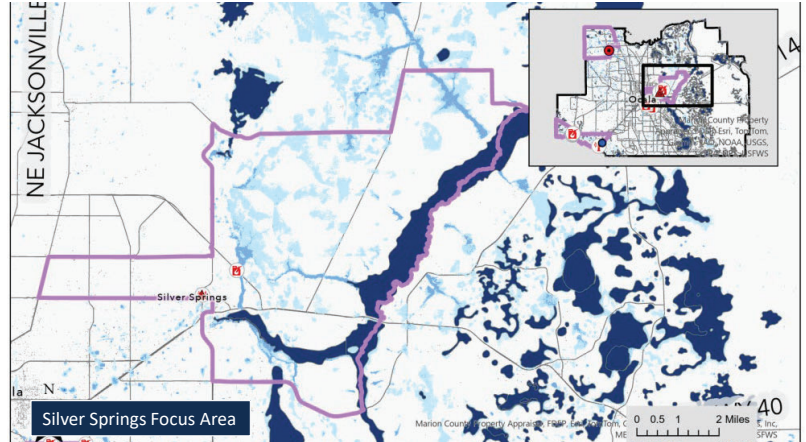
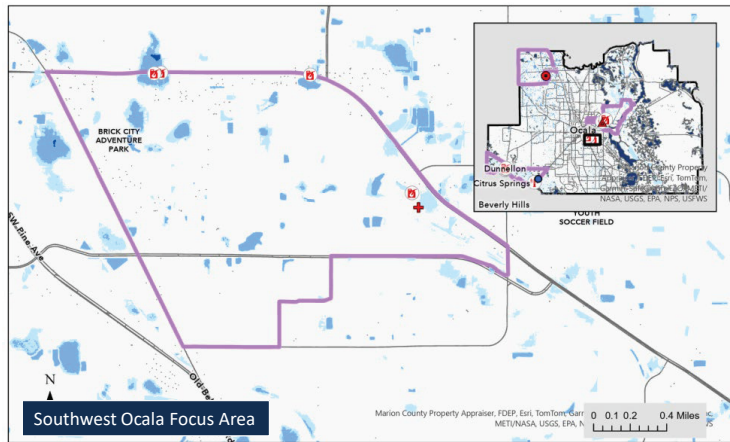
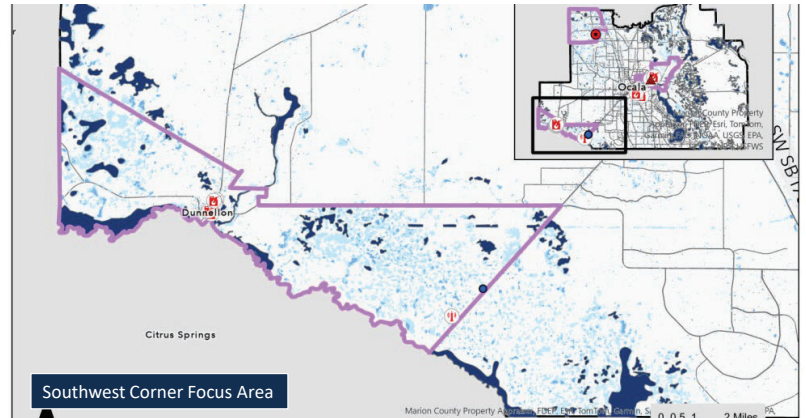
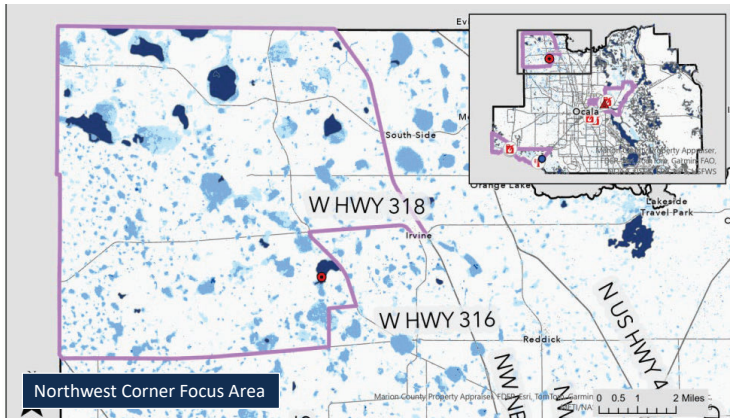
SECTION 380.093 F.S. (FLOOD HAZARDS)

- ~~Tidal flooding, including future high tide flooding~~, which must use thresholds published and provided by the department. To the extent practicable, the analysis should also geographically display the number of tidal flood days expected for each scenario and planning horizon
- ~~Current and future storm surge flooding using publicly available NOAA or FEMA storm surge data~~. The initial storm surge event used must equal or exceed the current 100-year flood event. Higher frequency storm events may be analyzed to understand the exposure of a critical asset
- **To the extent practicable, rainfall-induced flooding** using spatiotemporal analysis or existing hydrologic and hydraulic modeling results. Future boundary conditions should be modified to consider sea level rise and high tide conditions
- ~~To the extent practicable, compound flooding~~ or the combination of tidal, storm surge, and rainfall-induced flooding

PROJECT OUTCOMES

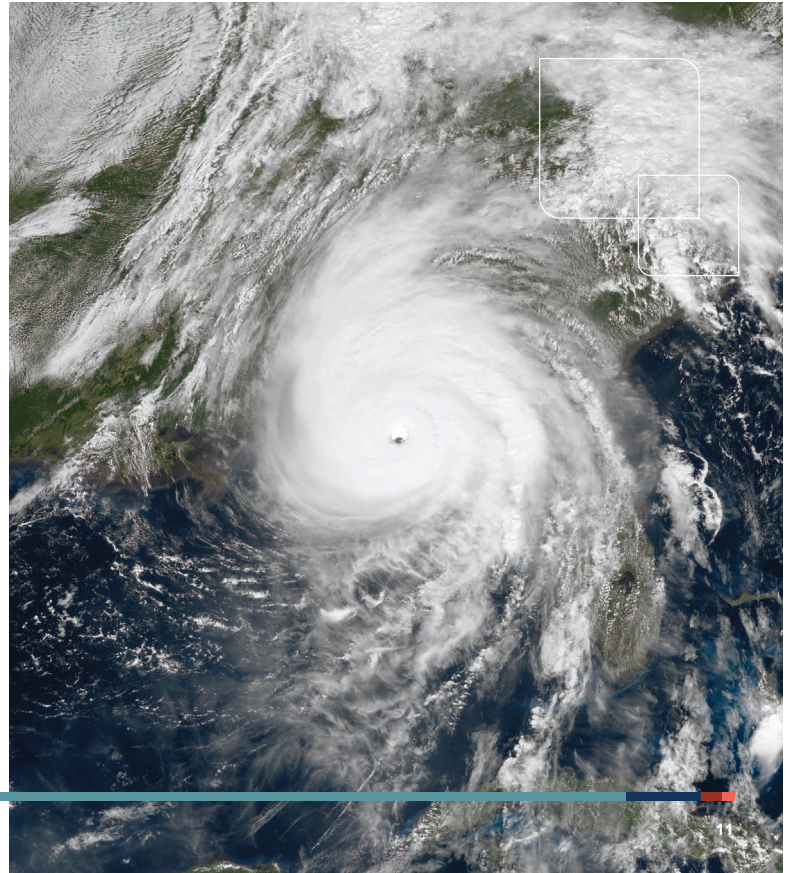
- Established GIS-based inventory of critical assets in Marion County.
- Updated existing Interconnected Channel and Pond Routing (ICPR) flood models for current and future conditions (2050, 2080).
- Integrated flood models into StormWise™ (formerly ICPR4).
- Assessed risks and vulnerabilities through exposure and sensitivity analyses.
- Held two public meetings: one for input, one for findings and recommendations.
- Complied with Florida Statutes and Resilient Florida Data Standards.





NEXT STEPS

- Secure final approval from Resilient Florida Program for state compliance.
- Request additional funding for Adaptation Plan development.
- Prioritize grant applications to support implementation.
- Develop site-specific flood hazard analyses and proposals.
- Integrate project findings into local codes and plans.
- Sustain community and stakeholder engagement.



GET IN TOUCH

Sean Lahav, MPA, WEDG, Project Manager, can be contacted at slahav@halff.com

352-343-8481
halff.com

CONNECT WITH US. LIKE US. FOLLOW US.

