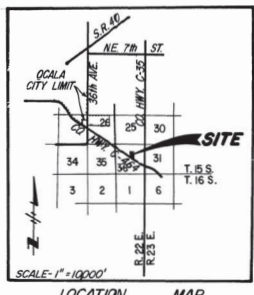
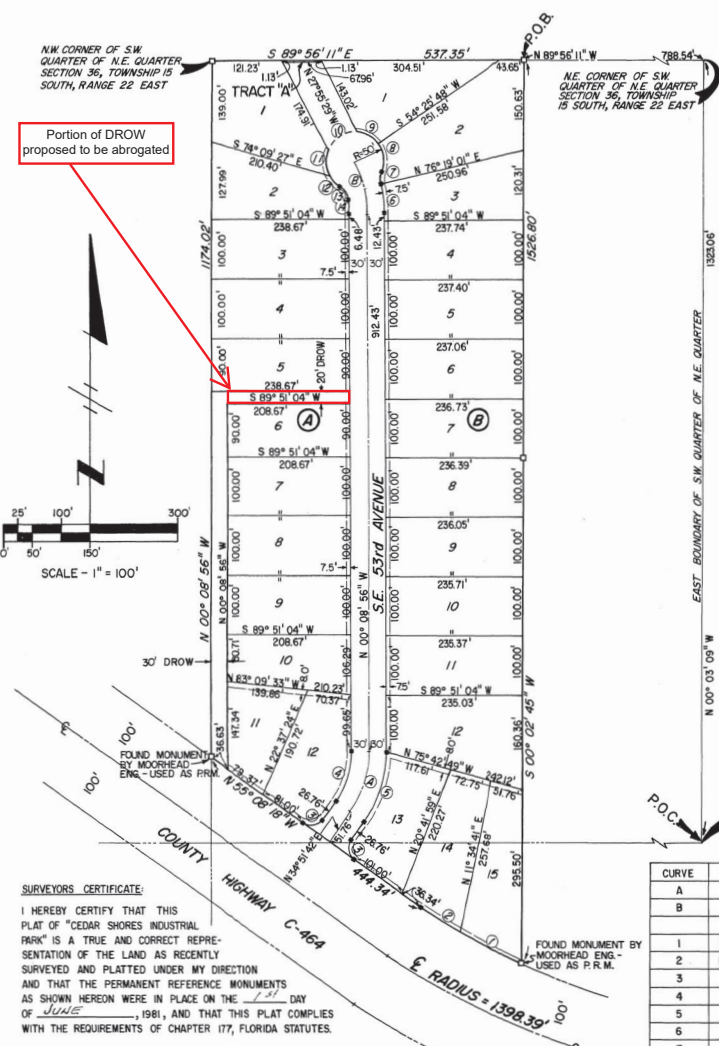


CEDAR SHORES INDUSTRIAL PARK

MARION COUNTY, FLORIDA



DESCRIPTION:
 COMMENCING AT THE S.E. CORNER OF THE S.W. 1/4 OF THE N.E. 1/4 OF SECTION 36, TOWNSHIP 15 SOUTH, RANGE 22 EAST; THENCE N 00° 03' 09" W ALONG THE EAST BOUNDARY OF SAID S.W. 1/4 OF N.E. 1/4 A DISTANCE OF 1523.05 FEET TO THE N.E. CORNER THEREOF; THENCE N 89° 56' 11" W ALONG THE NORTH BOUNDARY THEREOF 788.54 FEET TO THE POINT OF BEGINNING. FROM THE P.O.B. THUS DESCRIBED, THENCE S 00° 02' 45" W 1528.80 FEET TO AN INTERSECTION WITH THE NORTHERLY RIGHT-OF-WAY LINE OF COUNTY HIGHWAY NO. C-464 (200 FEET WIDE), SAID POINT OF INTERSECTION BEING ON THE ARC OF A CURVE CONCAVE NORTHEASTERLY AND HAVING A RADIUS OF 1298.39 FEET; THENCE NORTHWESTERLY ALONG AND WITH THE ARC OF SAID CURVE A CHORD BEARING AND DISTANCE OF N 59° 27' 16" W 195.61 FEET TO THE POINT OF TANGENCY; THENCE CONTINUE ALONG SAID NORTHERLY RIGHT-OF-WAY LINE N 55° 09' 16" W 444.34 FEET TO AN INTERSECTION WITH THE WEST BOUNDARY OF THE AFORESAID S.W. 1/4 OF THE N.E. 1/4 OF SECTION 36; THENCE DEPARTING FROM SAID RIGHT-OF-WAY LINE, N 00° 08' 56" W ALONG THE WEST BOUNDARY OF SAID S.W. 1/4 OF N.E. 1/4 A DISTANCE OF 1174.02 FEET TO THE N.W. CORNER THEREOF; THENCE S 89° 56' 11" E ALONG THE NORTH BOUNDARY THEREOF 537.35 FEET TO THE POINT OF BEGINNING.
 ALL BEING IN MARION COUNTY, FLORIDA.

OFFICIAL COVENANT:
 THE BOARD OF COUNTY COMMISSIONERS OF MARION COUNTY, FLORIDA, AS A CONDITION PRECEDENT TO THE ACCEPTANCE OF THIS PLAT FOR RECORDING IN THE PUBLIC RECORDS, DOES HEREBY NOTIFY ALL PRESENT AND FUTURE OWNERS OF PROPERTY SHOWN ON THIS PLAT THAT THE LANDS INCLUDED IN THIS PLAT ARE SUBJECT TO SPECIAL ASSESSMENTS AS MAY BE PERMITTED BY LAW TO FINANCE COSTS INCURRED IN CONNECTION WITH THE MAINTENANCE, OPERATION AND CONSTRUCTION OF A CENTRAL WATER SYSTEM AND SEWER SYSTEM WHEN, IN THE OPINION OF SAID BOARD OR OTHER GOVERNING BODY HAVING JURISDICTION, SUCH FACILITIES BECAME NECESSARY IN ORDER TO PROTECT THE ENVIRONMENT AND THE HEALTH, SAFETY AND WELFARE OF THE GENERAL PUBLIC.

CURVE TABLE

CURVE	RADIUS	DELTA	ARC	TANGENT	CHORD
A	180.00'	38° 00' 38"	109.99'	56.77'	108.29'
B	180.00'	27° 46' 33"	87.26'	44.51'	86.41'
1	1298.39'	5° 07' 08"	116.00'	58.04'	115.96'
2	298.39'	3° 31' 16"	79.79'	39.91'	79.78'
3	25.00'	90° 00' 00"	39.27'	25.00'	35.36'
4	150.00'	35° 00' 38"	91.66'	47.31'	90.24'
5	210.00'	35° 00' 38"	128.32'	66.23'	126.33'
6	210.00'	13° 32' 03"	49.61'	24.92'	49.49'
7	25.00'	38° 11' 14"	15.79'	8.17'	15.53'
8	50.00'	58° 04' 27"	50.68'	27.76'	48.54'
9	50.00'	45° 29' 05"	39.69'	20.96'	38.66'
10	50.00'	73° 44' 24"	64.35'	37.50'	60.00'
11	50.00'	49° 21' 48"	43.08'	22.98'	41.76'
12	50.00'	37° 42' 21"	32.90'	17.07'	32.31'
13	25.00'	53° 30' 40"	23.35'	12.60'	22.51'
14	150.00'	8° 12' 14"	21.48'	10.76'	21.46'

DEDICATION:
 KNOW ALL MEN BY THESE PRESENTS: THAT KENNETH KARP, AS TRUSTEE, HAS CAUSED TO BE MADE THE ATTACHED PLAT OF "CEDAR SHORES INDUSTRIAL PARK", THE SAME BEING A SUBDIVISION OF THE LAND HEREIN DESCRIBED, AND THAT THE DRAINAGE RIGHT-OF-WAY AND AVENUE AS SHOWN ON THE ATTACHED PLAT TOGETHER WITH ALL IMPROVEMENTS THEREON ARE HEREBY DEDICATED TO THE PERPETUAL USE OF THE PUBLIC FOR PROPER PURPOSES RESERVING UNTO THEMSELVES, THEIR HEIRS OR ASSIGNS, THE REVERSION OR REVERSIONS THEREOF WHENEVER DISCONTINUED BY LAW, AND THAT THE EASEMENTS AS SHOWN ARE GRANTED AND RESERVED FOR THE INSTALLATION AND MAINTENANCE OF PUBLIC UTILITIES AND DRAINAGE FACILITIES.
 IN WITNESS WHEREOF I HAVE CAUSED THESE PRESENTS TO BE SIGNED ON THIS 18TH DAY OF May, 1981.

WITNESS:
 Walter Dorman
 Kenneth Karp, AS TRUSTEE

STATE OF FLORIDA
 COUNTY OF MARION
 BEFORE ME THIS DAY PERSONALLY APPEARED KENNETH KARP, TO ME WELL KNOWN TO BE THE PERSON DESCRIBED IN AND WHO EXECUTED THE FOREGOING INSTRUMENT AND WHO ACKNOWLEDGED THAT HE DID SO FREELY AND VOLUNTARILY FOR THE USES AND PURPOSES THEREIN EXPRESSED.

DATE May 18, 1981
 SIGNED: Robert J. ...
 NOTARY PUBLIC
 STATE OF FLORIDA AT LARGE
 MY COMMISSION EXPIRES Aug 15, 1981

CONSENT OF MORTGAGEE:
 KNOW ALL MEN BY THESE PRESENTS: THAT OCALA SECURITY INVESTMENT, INC. A FLORIDA CORPORATION, THE OWNER AND HOLDER OF THAT CERTAIN MORTGAGE DATED JULY 1, 1980, AND RECORDED IN OFFICIAL RECORDS BOOK 1025, AT PAGE 000, OF THE PUBLIC RECORDS OF MARION COUNTY, FLORIDA, ENCUMBERING THE PROPERTY DESCRIBED HEREON, DOES HEREBY CONSENT TO THIS PLAT AND JOINS IN THE ABOVE DEDICATION.
 IN WITNESS WHEREOF THE SAID OCALA SECURITY INVESTMENT, INC. HAS CAUSED THESE PRESENTS TO BE SIGNED IN ITS CORPORATE NAME BY ITS PRESIDENT AND SECRETARY, AND ITS CORPORATE SEAL TO BE HEREAUTO AFFIXED BY ITS SECRETARY ON THIS 15TH DAY OF May, 1981, ALL BY AND WITH THE AUTHORITY OF THE BOARD OF DIRECTORS OF SAID CORPORATION.

OCALA SECURITY INVESTMENT, INC.
 BY: Mary W. Sullivan
 MARY W. SULLIVAN
 ATTEST: Merle A. Carpenter
 MERLE A. CARPENTER, SECRETARY

STATE OF FLORIDA
 COUNTY OF MARION
 BEFORE ME THIS DAY PERSONALLY APPEARED MARY W. SULLIVAN AND MERLE A. CARPENTER, AS PRESIDENT AND SECRETARY RESPECTIVELY OF OCALA SECURITY INVESTMENT, INC., TO ME WELL KNOWN TO BE THE PERSONS DESCRIBED IN AND WHO EXECUTED THE FOREGOING INSTRUMENT, AND WHO ACKNOWLEDGED THAT THEY DID SO AS OFFICERS OF SAID CORPORATION ALL BY AND WITH THE AUTHORITY OF THE BOARD OF DIRECTORS OF SAID CORPORATION.

DATE May 15, 1981
 SIGNED: Murray E. Fugate
 MURRAY E. FUGATE
 CHAIRMAN, BOARD OF COUNTY COMMISSIONERS
 MY COMMISSION EXPIRES: Nov 21, 1982

APPROVAL OF OFFICIALS:
 APPROVED:
 BY: John A. Pillard
 COUNTY ENGINEER
 BY: Walter A. Siler
 ZONING DIRECTOR
 BY: Ronald H. Miller
 COUNTY PLANNER

THE BOARD OF COUNTY COMMISSIONERS OF MARION COUNTY, FLORIDA, DOES HEREBY APPROVE THIS PLAT FOR RECORDING IN THE PUBLIC RECORDS AND ACCEPTS THE FOREGOING DEDICATION.
 ATTEST: Frances E. Thigpen
 FRANCES E. THIGPEN
 CLERK OF THE CIRCUIT COURT
 BY: Murray E. Fugate
 MURRAY E. FUGATE
 CHAIRMAN OF THE BOARD

I HEREBY CERTIFY THAT THE ATTACHED PLAT CONFORMS WITH THE PROVISIONS OF CHAPTER 177, FLORIDA STATUTES, AND THAT SAID PLAT WAS FILED FOR RECORD IN PLAT BOOK U, AT PAGE 51, OF THE PUBLIC RECORDS OF MARION COUNTY, FLORIDA AT 11:15 A.M. ON July 1, 1981.
 BY: Frances E. Thigpen
 FRANCES E. THIGPEN
 CLERK OF THE CIRCUIT COURT

NOTICE: There may be occasional restrictions that are not recorded on this plat that may be found in the public records of this County.

SURVEYORS CERTIFICATE:
 I HEREBY CERTIFY THAT THIS PLAT OF "CEDAR SHORES INDUSTRIAL PARK" IS A TRUE AND CORRECT REPRESENTATION OF THE LAND AS RECENTLY SURVEYED AND PLATTED UNDER MY DIRECTION AND THAT THE PERMANENT REFERENCE MONUMENTS AS SHOWN HEREON WERE IN PLACE ON THE 15TH DAY OF JUNE, 1981, AND THAT THIS PLAT COMPLIES WITH THE REQUIREMENTS OF CHAPTER 177, FLORIDA STATUTES.

WILLIS C. MELVIN & ASSOCIATES
 BY: Willis C. Melvin
 WILLIS C. MELVIN
 REGISTERED SURVEYOR NO. 1918
 STATE OF FLORIDA

NOTE:
 4" x 4" CONCRETE MONUMENTS
 SET ON ALL LOT CORNERS.

