

TASK ORDER TO THE AGREEMENT

In accordance with the Miscellaneous Maintenance for Roads, Right-of-Ways, and Stormwater Maintenance Facilities Agreement, approved by the Board of County Commissioners on July 6, 2022 (the "Agreement") for work within the scope of Solicitation 22Q-141-TO-07 NW 44th Ave Curb Inlet Sedimentation Removal, this Task Order to the Agreement (this "Amendment") is made and entered into between Hartman Civil Construction Company, Inc. whose Principal address 7379 N. Whippoorill Terrace, Hernando, FL 34442, with a mailing address of 9200 SW HWY 484 Ocala, FL 34481 and possessing FEIN# 46-5262082 ("CONTRACTOR") and Marion County, a political subdivision of the State of Florida, 601 SE 25th Avenue, Ocala, FL, 34471 ("COUNTY").

WITNESSETH

WHEREAS the parties wish to amend the Agreement as set forth below; and;

IN CONSIDERATION of the mutual covenants and conditions contained herein, the parties do hereby agree as follows:

1. This Amendment shall be deemed to amend and become a part of the Agreement in accordance with the original Solicitation and Agreement for Miscellaneous Maintenance for Roads, Right-of-Ways, and Stormwater Maintenance Facilities under 22Q-141.
2. CONTRACTOR's services and performance will be in accordance with Exhibit A – Special Provisions, Exhibit B – Scope of Work and Exhibit C - Fee Schedule, hereto. The total cost for the Project will not exceed Forty-Seven Thousand Three Hundred Eighty-Eight Dollars and Zero Cents (\$47,388.00). The Project shall reach Final completion within 30 Calendar days. Liquidated damages shall be assessed at a rate of \$250 per day. All Work shall proceed in a timely manner without delays. **TIME IS OF THE ESSENCE.** All limitations of time set forth in the Contract Documents are of the essence of this Contractor. The Work may be presumed abandoned after ninety (90) days if CONTRACTOR terminates the Work without just cause or without proper notification to COUNTY, including the reason for termination, or fails to perform Work without just cause for ninety (90) consecutive days.
3. All provisions of the Agreement not specifically amended herein shall remain in full force and effect.

(This portion of the page intentionally left blank, signature on page to follow)

IN WITNESS WHEREOF the parties have entered into this Amendment, as approved by the Marion County Board of County Commissioners, on the date of the last signature below.

ATTEST:

MARION COUNTY, A POLITICAL SUB-DIVISION OF THE STATE OF FLORIDA

GREGORY C. HARRELL, DATE
MARION COUNTY CLERK OF COURT

MICHELLE STONE DATE
CHAIRMAN

**FOR USE AND RELIANCE OF MARION
COUNTY ONLY, APPROVED AS TO FORM
AND LEGAL SUFFICIENCY**

BCC APPROVED: June 17, 2025
22Q-141-TO-07 NW 44th Ave Curb Inlet
Sedimentation Removal

MATTHEW G. MINTER, DATE
MARION COUNTY ATTORNEY

WITNESS:

Hartman Civil Construction Company, Inc.

SIGNATURE

BY: DATE

PRINTED NAME

PRINTED:

WITNESS:

ITS: (TITLE)

SIGNATURE

PRINTED NAME

EXHIBIT A - SPECIAL PROVISIONS

NW 44th Avenue Curb Inlet Sedimentation Removal Project

SPECIAL PROVISIONS

SP-1. SPECIFICATIONS AND COORDINATION OF DOCUMENTS

Work shall be in accordance with the Marion County Land Development Code, FDOT Standard Specifications for Road and Bridge Construction, latest edition, and FDOT Design Standards, latest edition. In case of a discrepancy or conflict, the specification to follow will be the strictest/most conservative as determined by the COUNTY ENGINEER or his designee.

SP-2. LIQUIDATED DAMAGES: Liquidated Damages shall be assessed at a rate of \$250 per day.

SP-3. CONTRACTOR must perform the primary work, serve as the primary lead for all phases of the project, and provide a supervisor on-site in the day to day activities. Prior to Award, the CONTRACTOR shall demonstrate that they are performing greater than 50 percent of the work.

SP-4. CONTRACTOR shall submit the following items within seven (7) days of the Notice of Award, and prior to issuance of the Notice to Proceed (NTP):

- a. Proof of Insurance,
- b. Construction Schedule that complies with CONTRACT time,
- c. List of SUB-CONTRACTORS,
- d. List of Suppliers,
- e. List of Emergency Telephone numbers,
- f. Detailed MOT plan,
- g. Copy of MOT certification,
- h. Any other document required by the contract and not listed above.

SP-5. PROJECT MANAGEMENT: The CONTRACTOR shall appoint one individual to act as the CONTRACTOR's representative in regard to the contract. Contact numbers for this individual and for a secondary or back-up person shall be provided to the COUNTY. Daily Reports (DR) or Weekly Progress Reports shall be completed by the Project Manager or authorized representative and must be signed by the CONTRACTOR. Contractor signature represents receipt of the DR. Quantities identified on the DRs shall be compared to invoices submitted by the CONTRACTOR for accuracy prior to payment being made to the CONTRACTOR.

SP-6. HOURS OF OPERATION AND OVERTIME: For overtime purposes, the COUNTY's working schedule is from 8:00 A.M. to 5:00 P.M., Monday thru Friday, eight (8) hours per day/forty (40) hours per week except on holidays. Work during other times, on weekends, or on Holidays must be requested and pre-approved by the County at least 48 hours in advance.

SP-7. TEMPORARY FACILITIES: The CONTRACTOR will not be required to maintain a Field Office.

SP-8. DEWATERING: Some water may be encountered in inlets. Activities to address/control will be considered incidental.

SP-9. IMPLEMENTATION OF EROSION CONTROL BEST MANAGEMENT PRACTICES (BMPs): Implementation of all erosion control BMPs are considered incidental to this project unless identified in Exhibit A for a specific Work Location. BMPs specified at work locations shall be paid as per Section 2.2.7.1.

EXHIBIT A - SPECIAL PROVISIONS

NW 44th Avenue Curb Inlet Sedimentation Removal Project

- SP-10. **MOBILIZATION:** The CONTRACTOR shall submit mobilization cost as part of the Fee schedule. Payment shall be made for all work in this activity, verified, inspected and accepted, in accordance with this Contract and Task Order.
- SP-11. **METHOD OF MEASUREMENT and BASIS OF PAYMENT:** Except for items noted in the Bid Form to be paid in Lump Sum, the Method of Measurement shall be per work location and the Basis of Payment shall be per unit price for each item identified in the Quote Form for each work location completed, inspected and accepted by the COUNTY.
- SP-12. **STANDARD CLEARING AND GRUBBING:** The CONTRACTOR shall fill all holes created from the clearing and grubbing effort with clean fill (AASHTO Soil A-2-4, A-2-5, A-2-6, A-4 or A-5 or material matching insitu soil) and compacted in place until firm and unyielding. Borrow material used to fill hole is considered incidental and shall be included in the Clearing and Grubbing price. All areas shall be stabilized with sod within seven (7) days or as soon as all earth disturbing activities are complete for the work location. Hauling and disposal of materials from the clearing and grubbing effort is considered incidental and shall be included in the price for standard clearing and grubbing. 6" diameter at breast height (DBH) tree and brush removal within the clearing and grubbing area is included in this pay item. Specifications shall follow FDOT Spec 110-3. Prior to bid, CONTRACTOR shall evaluate these areas and all dead, dying, invasive/exotic, and trees less than 6" DBH shall be removed. All vines shall be removed, not just cut, but completely removed in a manner that will not damage the tree, including mobilizing a tree surgeon with specialized equipment to remove the vines if necessary. All remaining trees shall be limbed up to a height of 12 feet. In the event of tree removal with remaining stumps, the stumps shall be removed from the project, any voids filled with suitable material, and stabilized with sod. Final grades shall match existing grades and be level.

END OF SPECIAL PROVISIONS

EXHIBIT B - SCOPE OF WORK
NW 44th Avenue - Sediment Removal
 (From: NW 63rd ST to NW 73rd PL) 0.76 miles

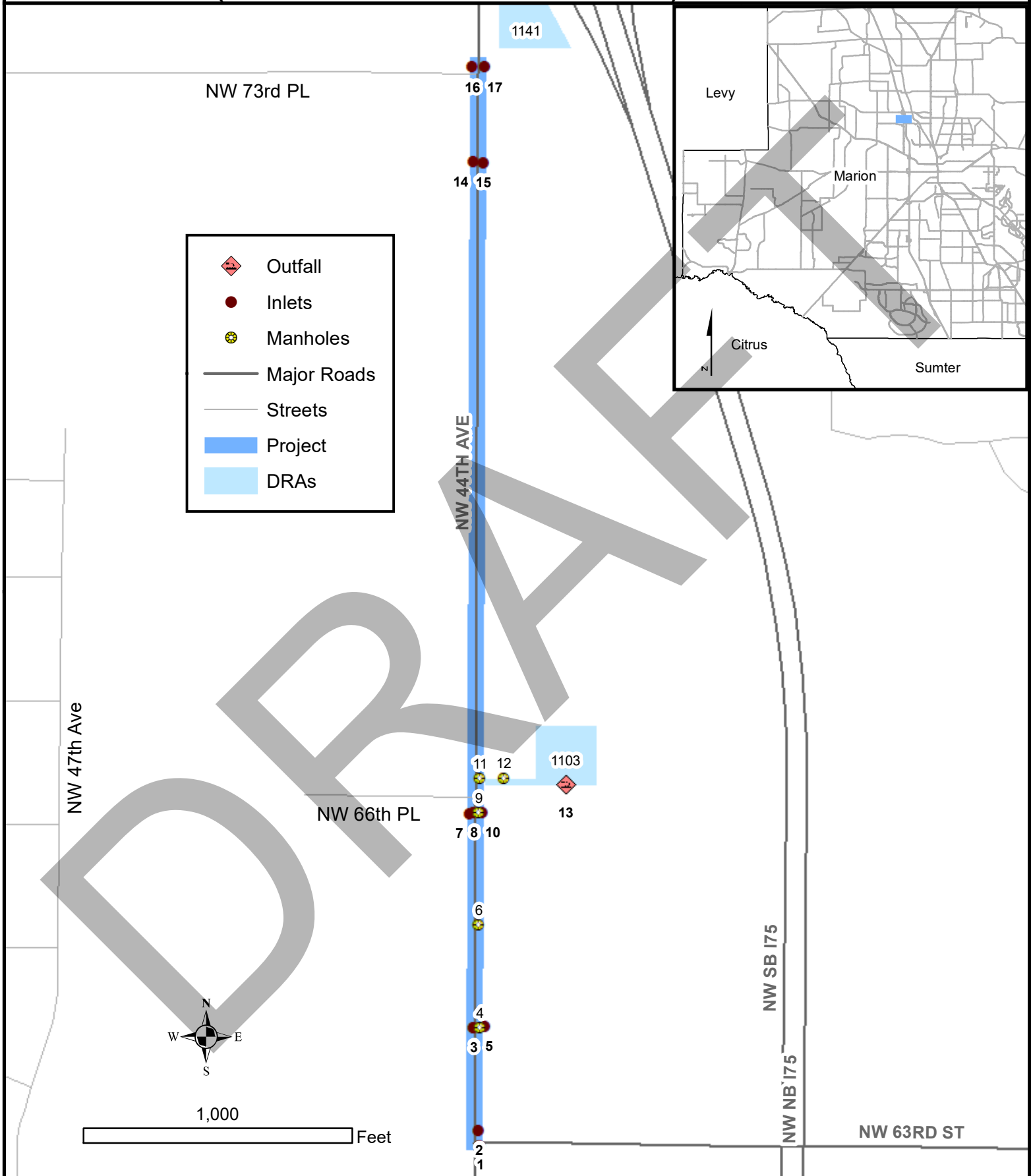
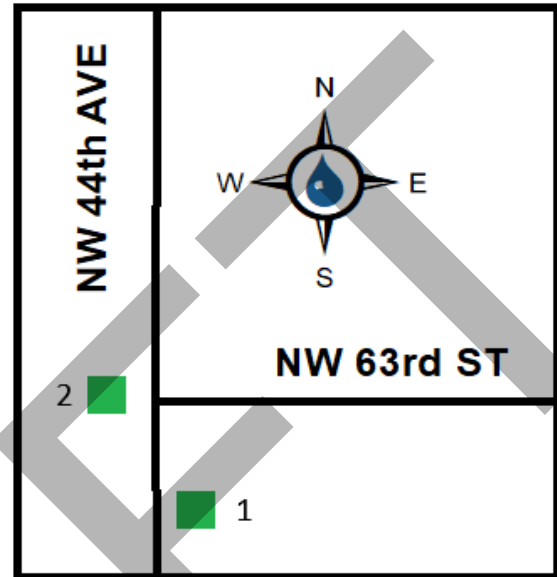


EXHIBIT B - SCOPE OF WORK
NW 44th Avenue
Curb and Inlet Sedimentation Removal Project

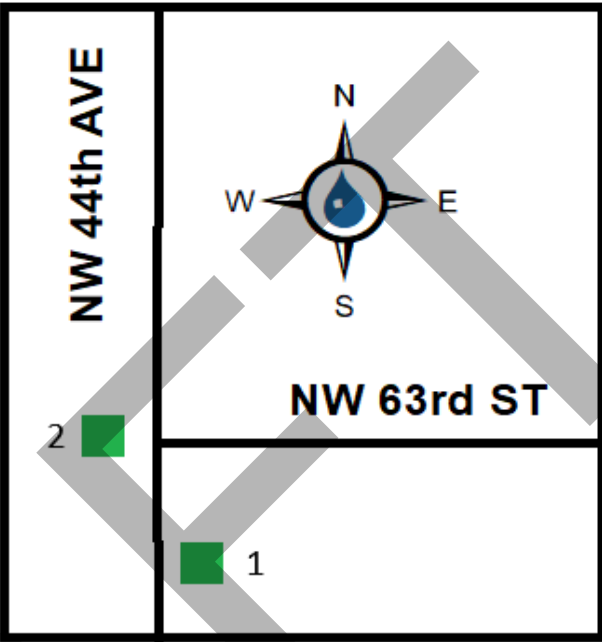
Work Location	#1
Structure Type	Inlet
Type	Curb Inlet
Depth	35
Pipe Diameter	18
Material	Reinforced Concrete
County ID	et112807-I
Latitude	N 29° 15'08.2"
Longitude	W 82° 11'36.8"



Quantity	Work Description
1 EA	East side of NW 44th Ave: Clean curb inlet and drop inlet structure.

EXHIBIT B - SCOPE OF WORK
NW 44th Avenue
Curb and Inlet Sedimentation Removal Project

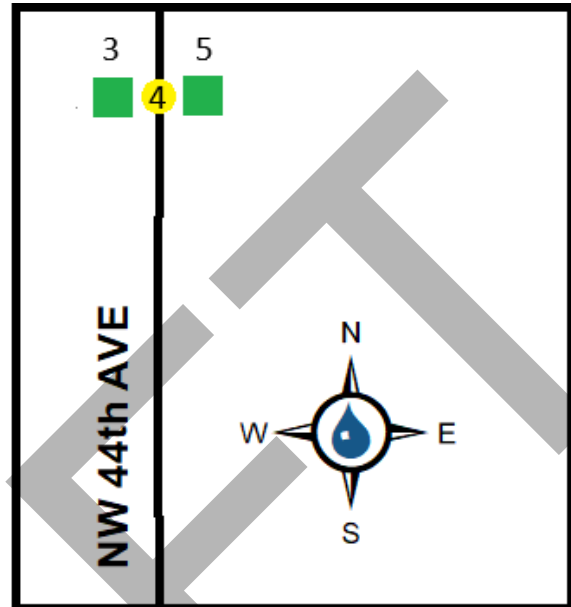
Work Location	#2
Structure Type	Inlet
Type	Curb Inlet
Depth	36
Pipe Diameter	18
Material	Reinforced Concrete
County ID	et112807-m
Latitude	N 29° 15'08.6"
Longitude	W 82° 11'37.0"



Quantity	Work Description
1 EA	West side of NW 44th Ave: Clean curb inlet and drop inlet structure.

EXHIBIT B - SCOPE OF WORK
NW 44th Avenue
Curb and Inlet Sedimentation Removal Project

Work Location	#3
Structure Type	Inlet
Type	Curb Inlet
Depth	40
Pipe Diameter	18
Material	Reinforced Concrete
County ID	et112807-o
Latitude	N 29° 15'12.7"
Longitude	W 82° 11'37.0"



Quantity	Work Description
1 EA	West side of NW 44th Ave: Clean curb inlet and drop inlet structure.

EXHIBIT B - SCOPE OF WORK
NW 44th Avenue
Curb and Inlet Sedimentation Removal Project

Work Location: #4

Structure Type: Manhole

Depth 42

Lid Diameter 24

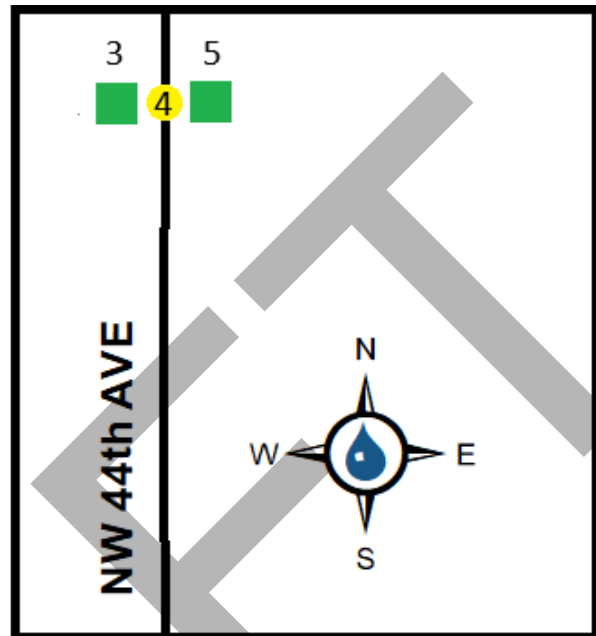
Pipe Diameter N = 24"
E, S, & W = 18"

Material Reinforced Concrete

County ID et112807-n

Latitude N 29° 15'12.7"

Longitude W 82° 11'36.9"



Quantity	Work Description
1 EA	Center of NW 44th Ave: Clean manhole structure.

EXHIBIT B - SCOPE OF WORK
NW 44th Avenue
Curb and Inlet Sedimentation Removal Project

Work Location: #5

Structure Type Inlet

Type Curb Inlet

Depth 40

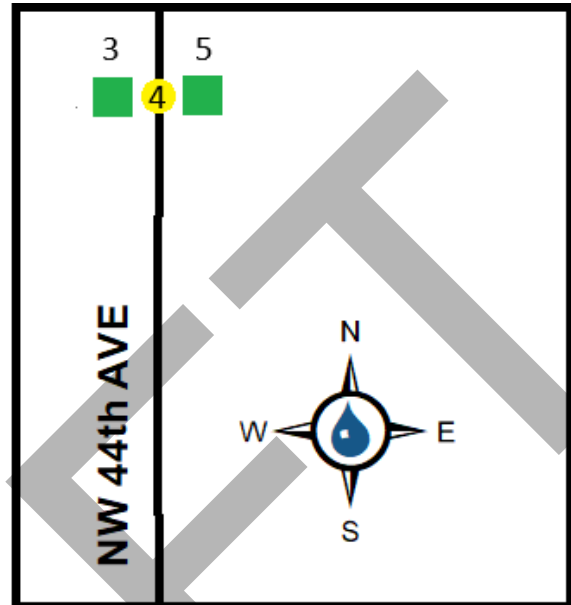
Pipe Diameter 18

Material Reinforced Concrete

County ID et112807-p

Latitude N 29° 15'12.7"

Longitude W 82° 11'36.7"



Quantity	Work Description
1 EA	East side of NW 44th Ave: Clean curb inlet and drop inlet structure.

EXHIBIT B - SCOPE OF WORK
NW 44th Avenue
Curb and Inlet Sedimentation Removal Project

Work Location: #6

Structure Type: Manhole

Depth 69

Lid Diameter 24

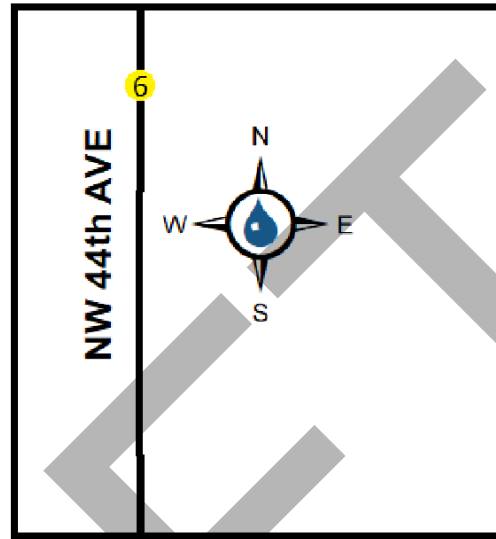
Pipe Diameter 24

Material Reinforced Concrete

County ID et112807-q

Latitude N 29° 15'16.4"

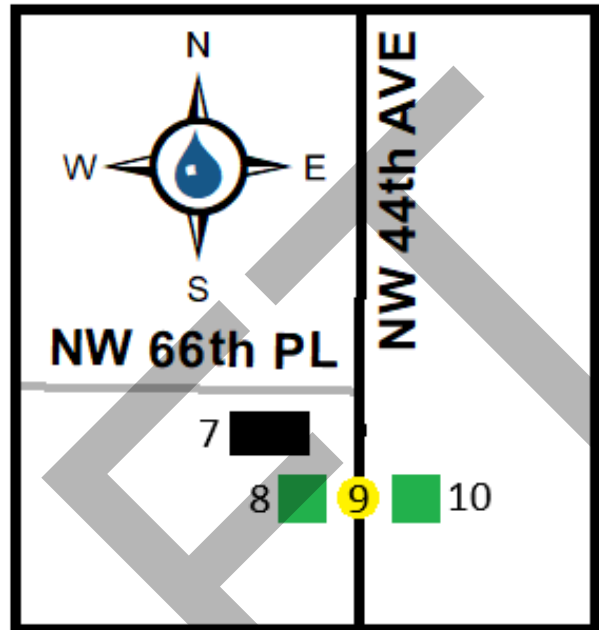
Longitude W 82° 11'36.8"



Quantity	Work Description
1 EA	Center of NW 44th Ave: Clean manhole structure.

EXHIBIT B - SCOPE OF WORK
NW 44th Avenue
Curb and Inlet Sedimentation Removal Project

Work Location	#7
Structure Type	Inlet
Type	Drop Inlet
Depth	32
Pipe Diameter	18
Material	Reinforced Concrete
County ID	et112807-u
Latitude	N 29° 15'20.8"
Longitude	W 82° 11'37.0"



Quantity	Work Description
1 EA	West of NW 44th Ave: Clean drop inlet structure.

EXHIBIT B - SCOPE OF WORK
NW 44th Avenue
Curb and Inlet Sedimentation Removal Project

Work Location: #8

Structure Type Inlet

Type Curb Inlet

Depth 51

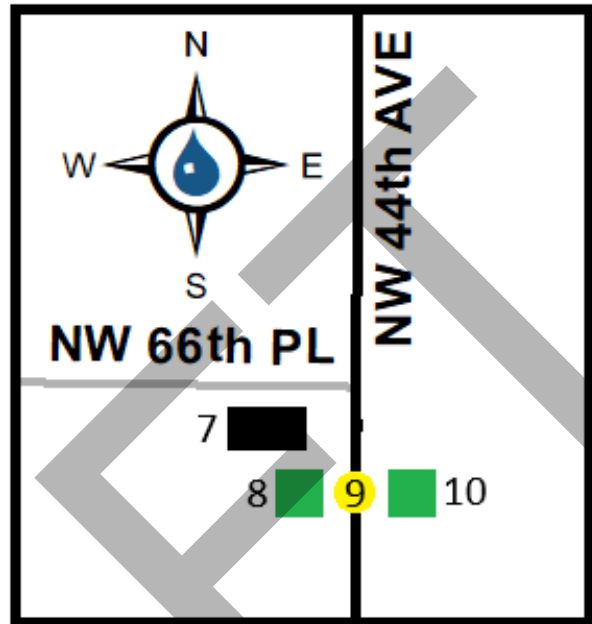
Pipe Diameter 18

Material Reinforced Concrete

County ID et112807-t

Latitude N 29° 15'20.8"

Longitude W 82° 11'37.0"



Quantity	Work Description
1 EA	West side of NW 44th Ave: Clean curb inlet and drop inlet structure.

EXHIBIT B - SCOPE OF WORK
NW 44th Avenue
Curb and Inlet Sedimentation Removal Project

Work Location: #9

Structure Type: Manhole

Depth 64

Lid Diameter 24

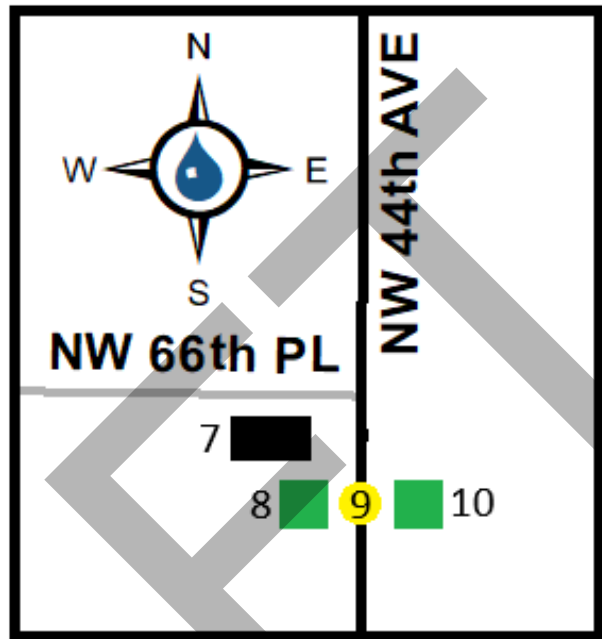
Pipe Diameter N & S = 24"
E & W = 18"

Material Reinforced Concrete

County ID et112807-r

Latitude N 29° 15'20.8"

Longitude W 82° 11'36.8"



Quantity	Work Description
1 EA	Center of NW 44th Ave: Clean manhole structure.

EXHIBIT B - SCOPE OF WORK
NW 44th Avenue
Curb and Inlet Sedimentation Removal Project

Work Location: #10

Structure Type Inlet

Type Curb Inlet

Depth 60

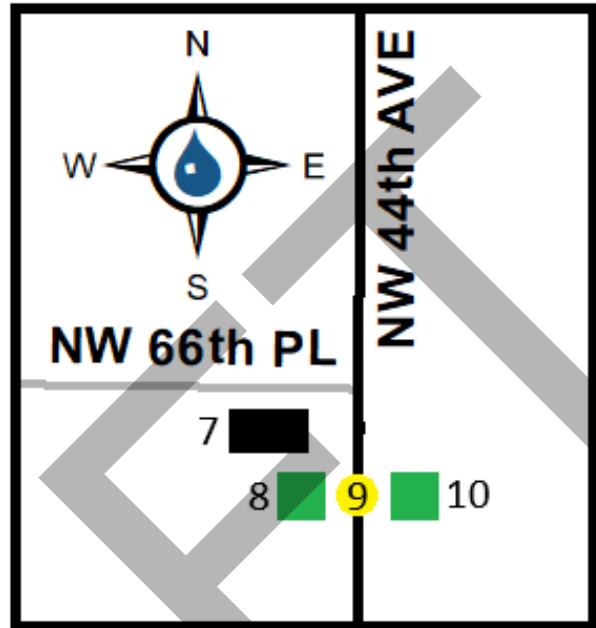
Pipe Diameter 18

Material Reinforced Concrete

County ID et112807-s

Latitude N 29° 15'20.8"

Longitude W 82° 11'36.6"



Quantity	Work Description
1 EA	East side of NW 44th Ave: Clean curb inlet and drop inlet structure.

EXHIBIT B - SCOPE OF WORK
NW 44th Avenue
Curb and Inlet Sedimentation Removal Project

Work Location: #11

Structure Type: Manhole

Depth 82

Lid Diameter 24

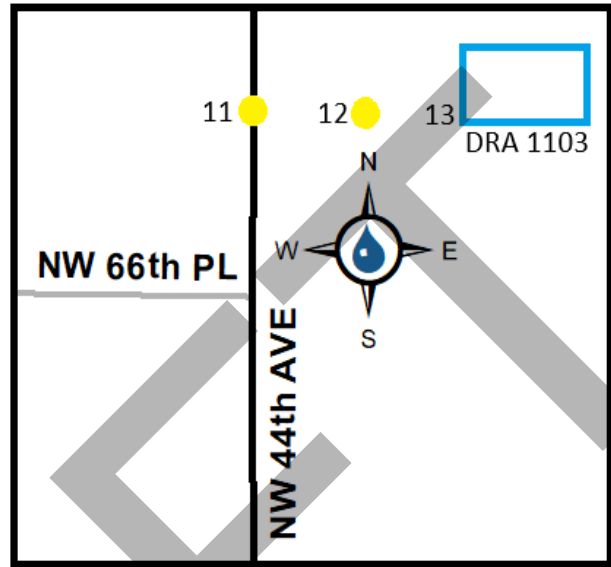
Pipe Diameter 24"

Material Reinforced Concrete

County ID et112807-v

Latitude N 29° 15'22.0"

Longitude W 82° 11'36.7"



Quantity	Work Description
1 EA	East of NW 44th Ave: Clean manhole structure.

EXHIBIT B - SCOPE OF WORK
NW 44th Avenue
Curb and Inlet Sedimentation Removal Project

Work Location: #12

Structure Type: Manhole

Depth 84

Lid Diameter 24

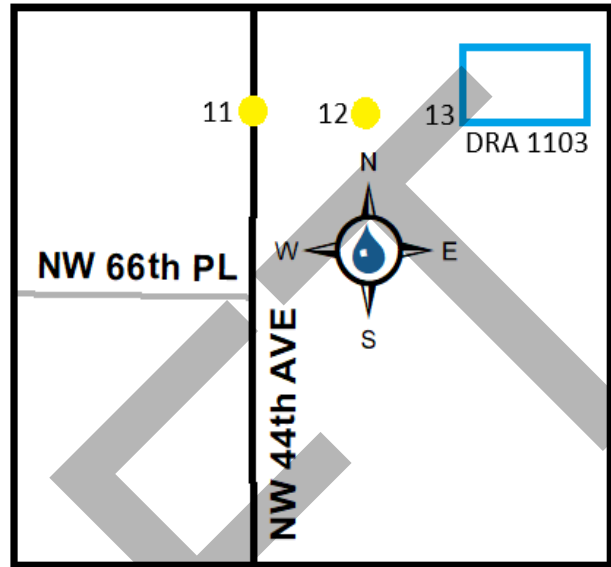
Pipe Diameter 24"

Material Reinforced Concrete

County ID et112807-w

Latitude N 29° 15'22.0"

Longitude W 82° 11'34.8"



Quantity	Work Description
1 EA	East of NW 44th Ave: Clean manhole structure.

EXHIBIT B - SCOPE OF WORK
NW 44th Avenue
Curb and Inlet Sedimentation Removal Project

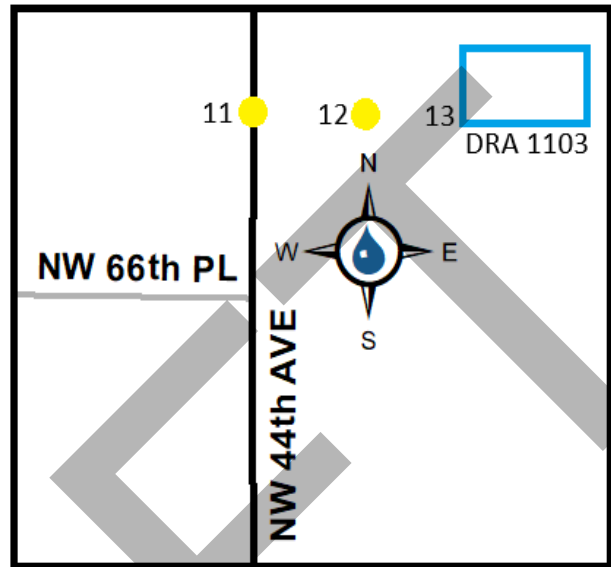
Work Location: #13

Structure Type: MES

Pipe Diameter 24"

Latitude N 29° 15'22.5"

Longitude W 82° 11'33.8"



Quantity	Work Description
1 LS	DRA 1103: Clean out 24" pipe.
100 SY	Clear and grub in the sump area of the DRA. Location identified below. The removal of trees within the standard clearing and grubbing area will fall under this pay item. Refer to Special Provisions SP-12.
100 SY	Finish grade and sod with Bahia.

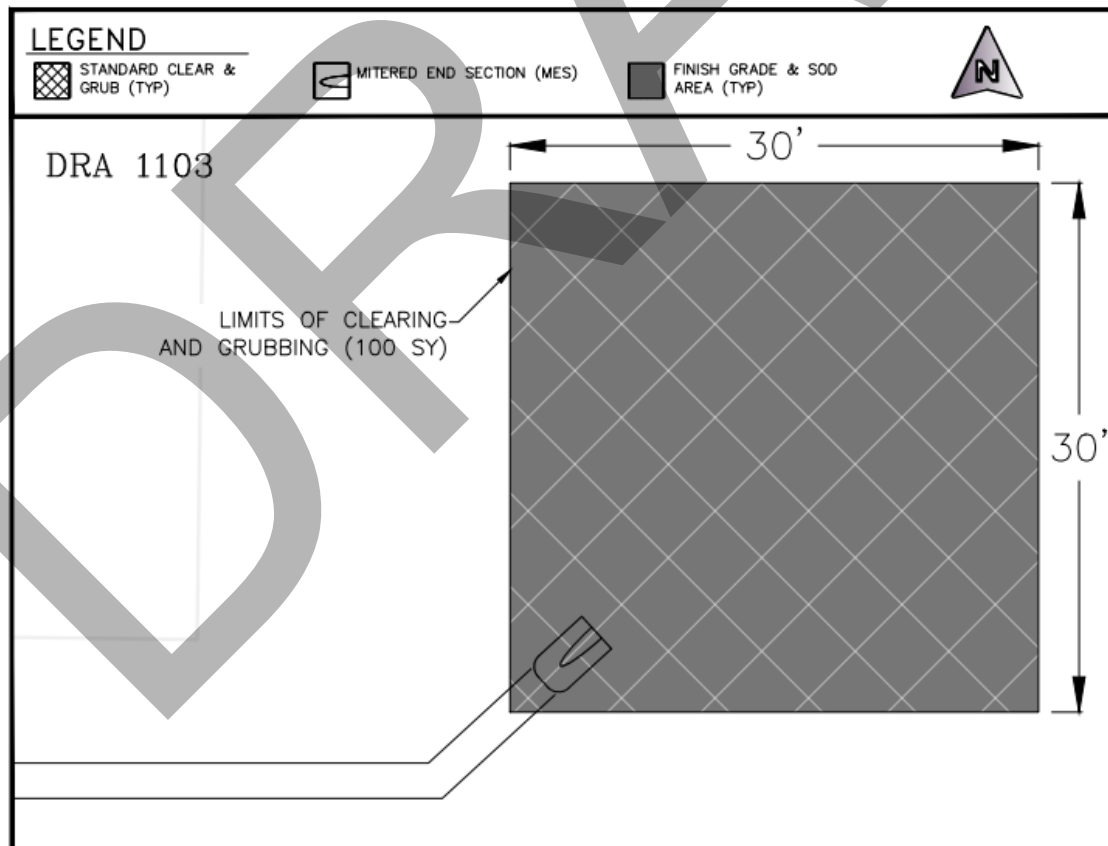
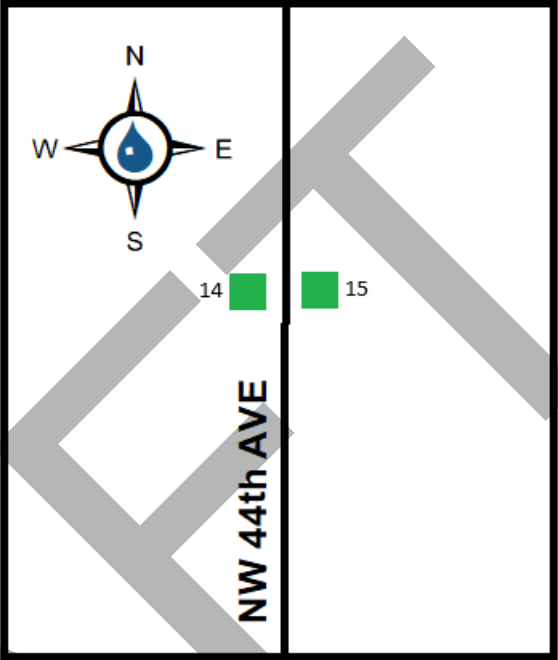


EXHIBIT B - SCOPE OF WORK
NW 44th Avenue
Curb and Inlet Sedimentation Removal Project



EXHIBIT B - SCOPE OF WORK
NW 44th Avenue
Curb and Inlet Sedimentation Removal Project

Work Location:	#14
Structure Type	Inlet
Type	Curb Inlet
Depth	43
Pipe Diameter	18
Material	Reinforced Concrete
County ID	et112807-g2
Latitude	N 29° 15'44.0"
Longitude	W 82° 11'36.9"



Quantity	Work Description
1 EA	West side of NW 44th Ave: Clean curb inlet and drop inlet structure.

EXHIBIT B - SCOPE OF WORK
NW 44th Avenue
Curb and Inlet Sedimentation Removal Project

Work Location: #15

Structure Type Inlet

Type Curb Inlet

Depth 60

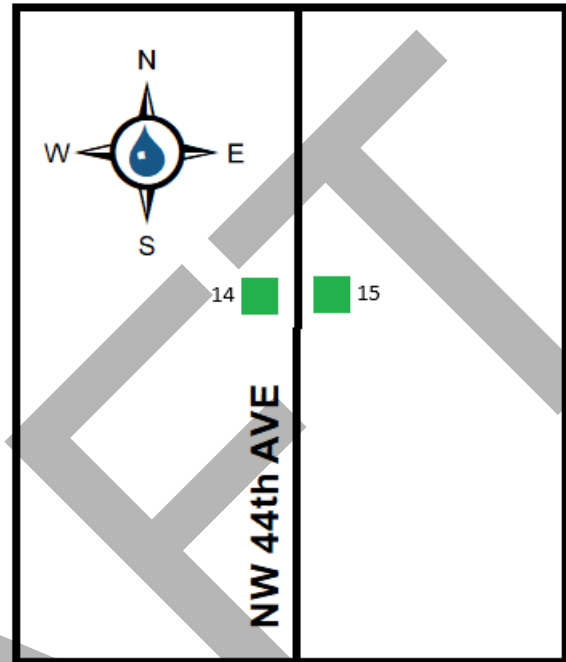
Pipe Diameter 18

Material Reinforced Concrete

County ID et112807-f2

Latitude N 29° 15'44.1"

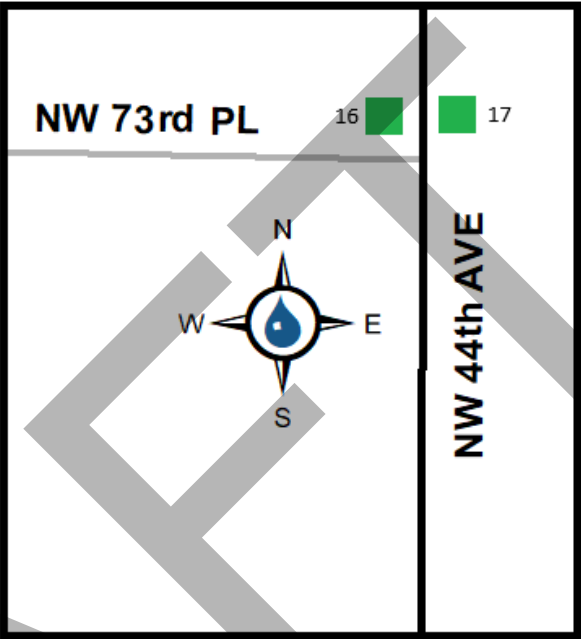
Longitude W 82° 11'36.6"



Quantity	Work Description
1 EA	East side of NW 44th Ave: Clean curb inlet and drop inlet structure.

EXHIBIT B - SCOPE OF WORK
NW 44th Avenue
Curb and Inlet Sedimentation Removal Project

Work Location:	#16
Structure Type	Inlet
Type	Curb Inlet
Depth	64
Pipe Diameter	18
Material	Reinforced Concrete
County ID	et112807-i2
Latitude	N 29° 15'48.3"
Longitude	W 82° 11'37.0"



Quantity	Work Description
1 EA	West side of NW 44th Ave: Clean curb inlet and drop inlet structure.

EXHIBIT B - SCOPE OF WORK
NW 44th Avenue
Curb and Inlet Sedimentation Removal Project

Work Location: #17

Structure Type Inlet

Type Curb Inlet

Depth 62

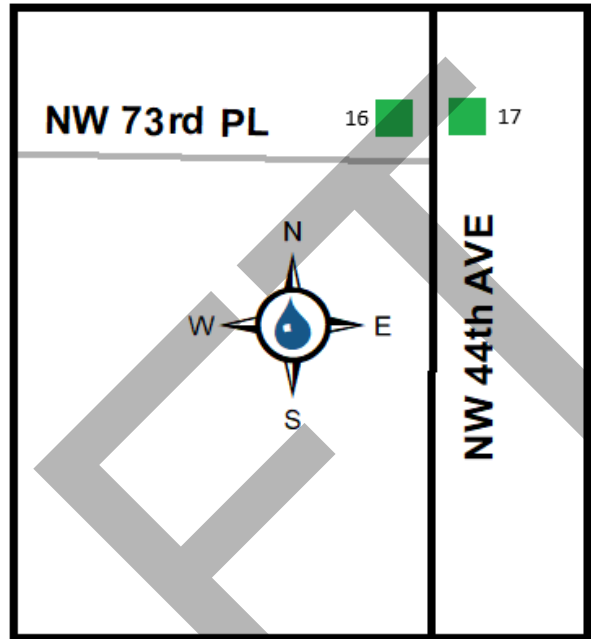
Pipe Diameter 18

Material Reinforced Concrete

County ID et112807-h2

Latitude N 29° 15'48.3"

Longitude W 82° 11'36.4"



Quantity	Work Description
1 EA	East side of NW 44th Ave: Clean curb inlet and drop inlet structure.

EXHIBIT C - SCHEDULE OF VALUES

Maintenance Project NW 44th Ave					
Curb Inlet Sedimentation Removal					
Item No.	Description of Services	Bid Quantity	Unit of Measure	Unit Price	Total Price
1 General					
1.1	Mobilization	1	LS	\$ 4,000.00	\$ 4,000.00
1.2	Maintenance of Traffic	1	LS	\$ 7,000.00	\$ 7,000.00
2 Sedimentation Removal of Curb Inlets and Structures					
2.1	Sedimentation Removal of Curb Inlets and Structures	16	EA	\$ 800.00	\$ 12,800.00
3 DRA 1103					
3.1	Desilt Stormwater Pipe	1	LS	\$ 10,888.00	\$ 10,888.00
3.2	Clearing and Grubbing - Standard	100	SY	\$ 75.00	\$ 7,500.00
3.3	Pallet Bahia Sod	100	SY	\$ 12.00	\$ 1,200.00
3.4	Dewatering (within the DRA)	1	LS	\$ 4,000.00	\$ 4,000.00
Total Project Cost					\$ 47,388.00