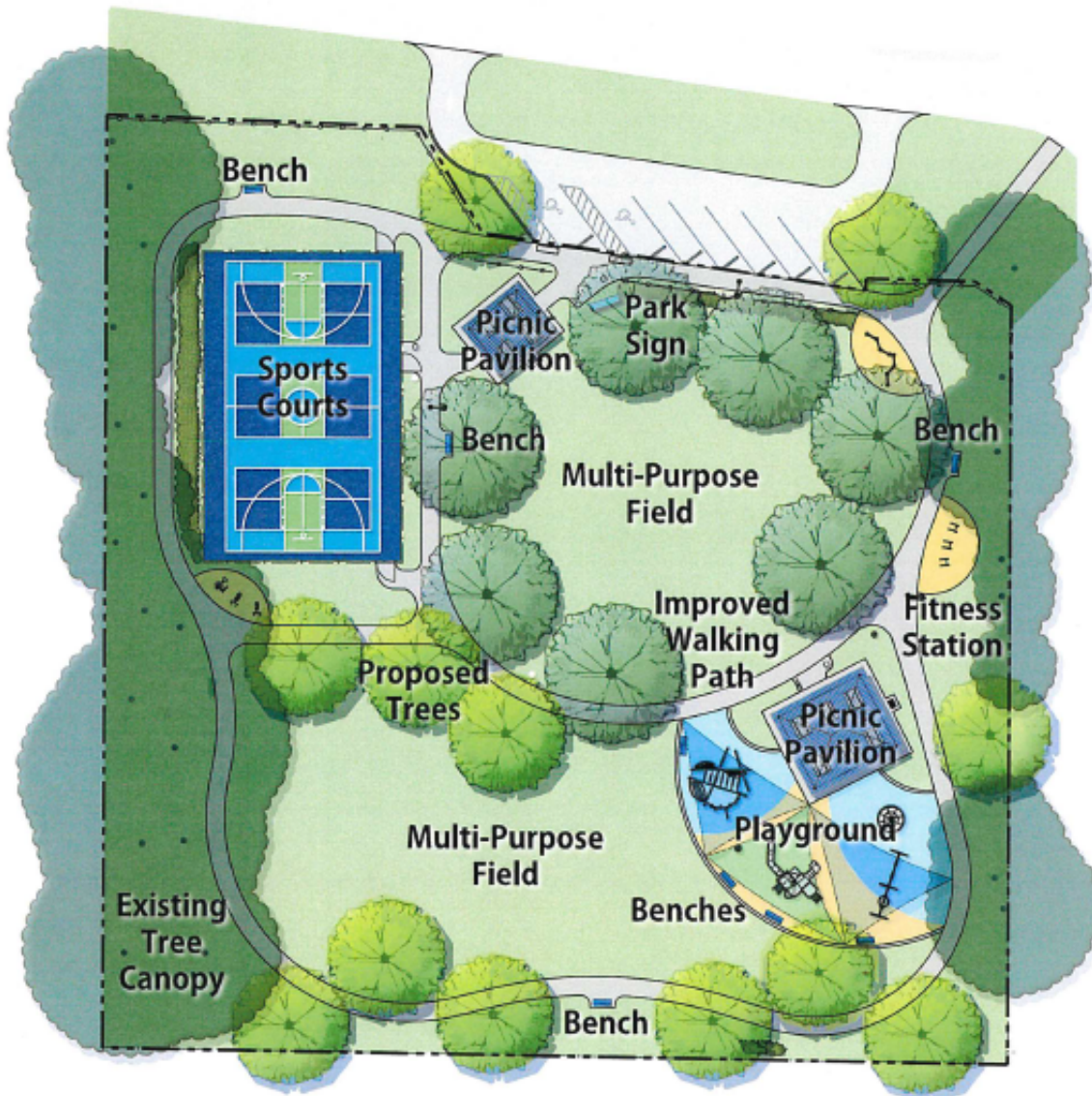


- 0.5 Acre Neighborhood Park**
Serves 62 Dwelling Units
- Plan Provides Minimum Three Elements:
- Multi Purpose Field
 - Playground
 - Picnic Area with Tables and Grills
 - Pavilion
- Plan Provides Minimum of Two Listed Seating Elements:
- Benches
 - Picnic Tables
- Plan Provides Required Tree Canopy
- Plan Provides a Park Sign

Small Neighborhood Park
+/- 0.5 Acres



1.9 Acre Neighborhood Park
Serves 236 Dwelling Units

Plan Provides Minimum Three
Elements:

- Multi Purpose Field
- Playground
- Picnic Area with Tables and Grills
- Pavilion
- Fitness Stations
- Sport Courts

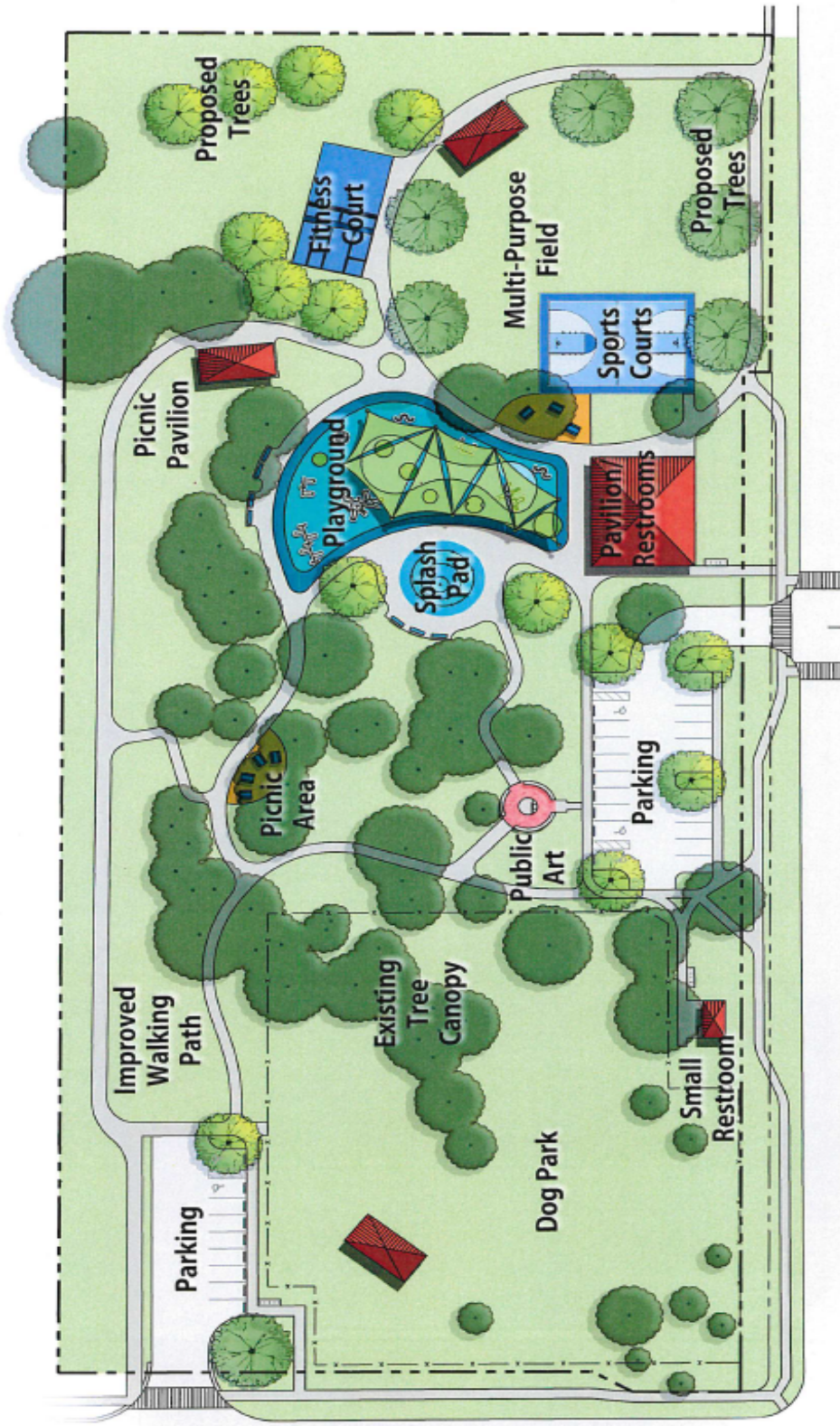
Plan Provides Minimum of Two
Listed Seating Elements

- Benches
- Picnic Tables

Plan Provides Required Tree Canopy

Plan Provides a Park Sign

Medium Neighborhood Park
+/- 1.9 Acres



Large Neighborhood Park
 +/- 6.8 Acres



LEGEND

- 1 Entry Drive And Drop-Off
- 2 Parking
- 3 Amenity Building/Clubhouse
- 4 Swimming Pool
- 5 Pool Deck With Seating
- 6 Building Restrooms That Also Serve Pool
- 7 Event Lawn
- 8 Multipurpose Field
- 9 Dog Park
- 10 Existing Trees
- 11 Sport/Game Area (Pickleball)
- 12 Sidewalk
- 13 Shade Trees And Landscape
- 14 Shade Structure

- Plan Provides Minimum Elements:**
- 2500 SF Minimum Amenity Center Building
 - 1500 SF Minimum Swimming Pool
 - Minimum of 2 Improved Sport Court Areas
 - Open Play Multi Purpose Field
 - Plan Provides Required Tree Canopy
 - Plan Provides a Park Sign

4.3 Acre Amenity Area
 8.6 Acres of Improved Open Space (IOS)
 Serves 1070 Dwelling Units

Prototypical Amenity Area