



FDOT Land Acquisition-114
PID # 12945-000-00
9,720 SQ FT Acquired by FDOT

Roads

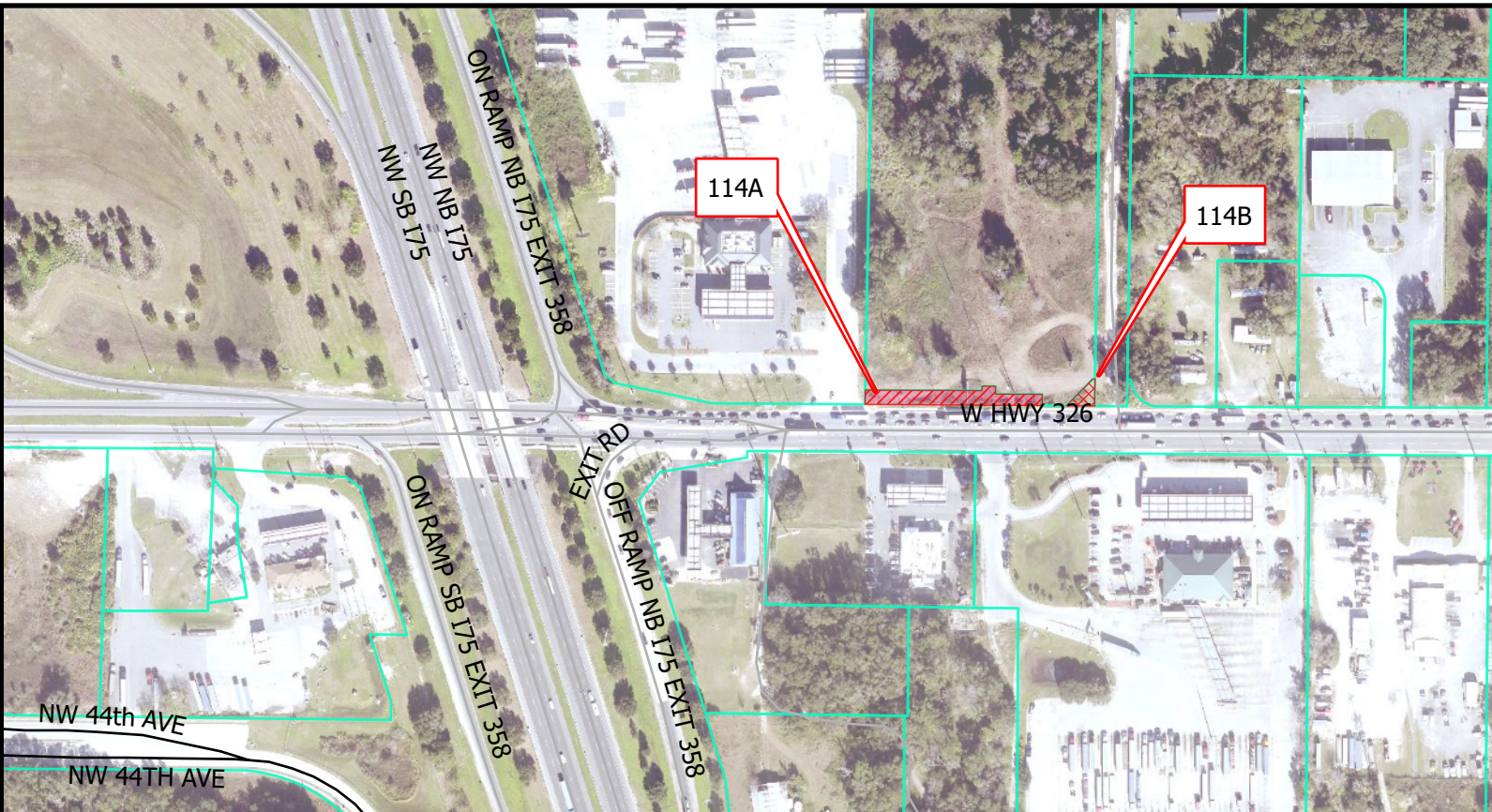
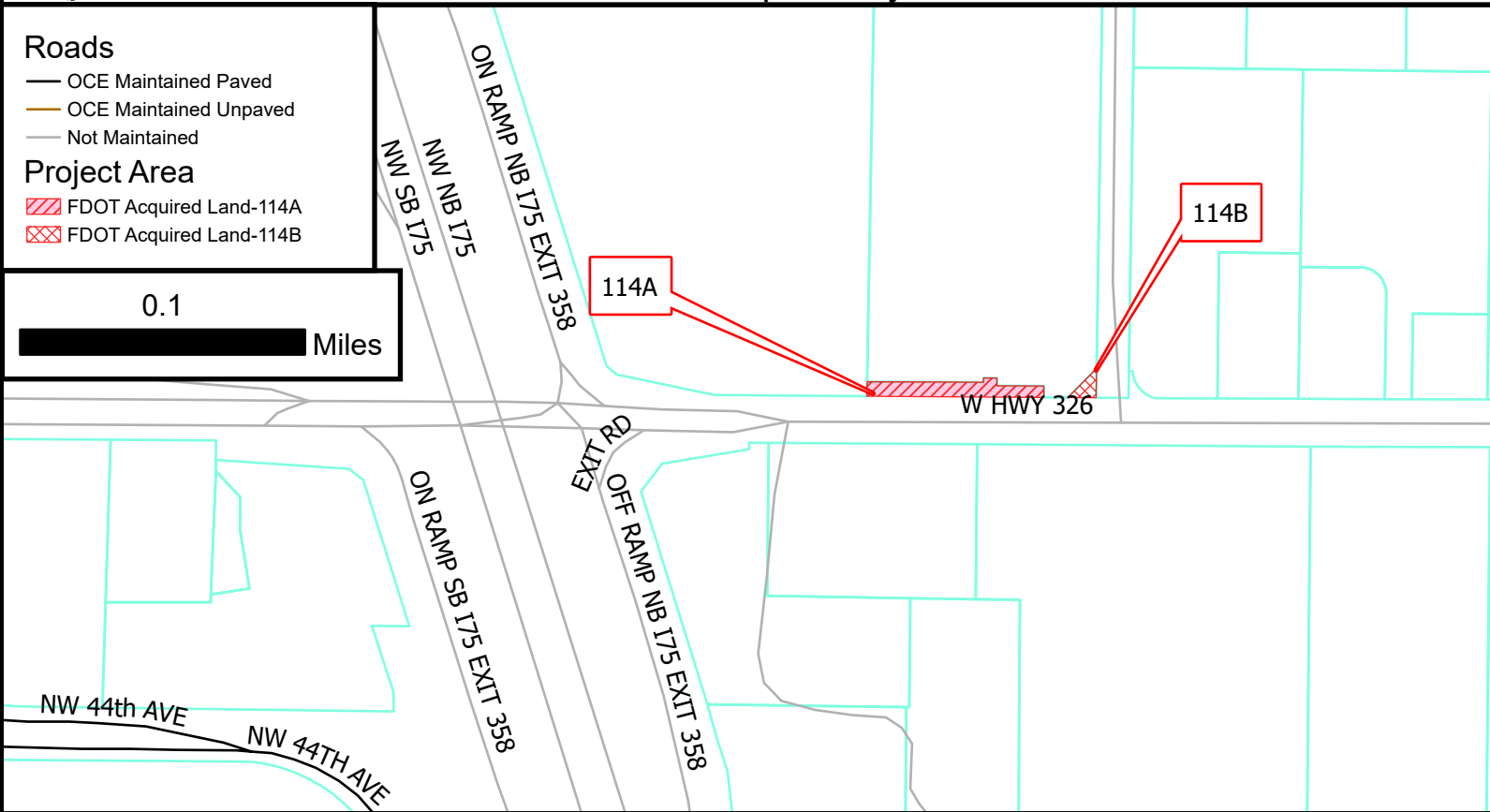
- OCE Maintained Paved
- OCE Maintained Unpaved
- Not Maintained

Project Area

- FDOT Acquired Land-114A
- FDOT Acquired Land-114B

0.1

Miles



Pathway:

\\mcbcc1\dfs\GIS_TR\Clay.Gibson\PDFs

Technician: CG

Printed: 04/30/2026

Marion County Office of the County Engineer
 Asset Management Section
 412 S.E. 25th Avenue
 Ocala, FL 34471

