

LEGEND

—+—	=	CONTINUUM
—EOL—	=	EDGE OF LIMBROCK
—U/L—	=	UTILITY LINES
—B/W—	=	RIGHT OF WAY
—T—	=	TELEPHONE BOX
PC	=	POINT OF CURVE
PT	=	POINT OF TANGENCY
B & HW FENCE	=	BOARD & HOG WIRE FENCE
B & W FENCE	=	BOARD & WIRE FENCE
MON	=	MONUMENT
NC	=	NO CLIMB
CONC	=	CONCRETE
—X—	=	EXISTING FENCE
—U—	=	UTILITY POLE & GUY ANCHOR
—S—	=	STORMWATER PIPE
1234-123-123	=	PARCEL NUMBER

NW 73RD TERR / NW 5TH LN / NW 71ST AVE MAINTAINED RIGHT-OF-WAY MAP

MARION COUNTY
BOARD OF COUNTY COMMISSIONERS
OFFICE OF THE COUNTY ENGINEER

RIGHT-OF-WAY MAP

PURSUANT TO SECTION 95.361, FLORIDA STATUTES, THE MAINTAINED RIGHT-OF-WAY SHALL BE DEEMED TO BE DEDICATED TO THE PUBLIC AND ALL RIGHT, TITLE, EASEMENT AND APPURTENANCES IN AND TO THE ROAD SHALL BE VESTED IN MARION COUNTY.

THE BOARD OF COUNTY COMMISSIONERS OF MARION COUNTY, FLORIDA, HEREBY APPROVE THE RIGHT-OF-WAY MAP(S) AND AUTHORIZE ITS FILING IN THE OFFICE OF THE CLERK OF THE CIRCUIT COURT AND DECLARE THAT THIS ROAD RIGHT-OF-WAY IS VESTED IN MARION COUNTY.

DULY ADOPTED THIS _____ DAY OF _____, _____.

BOARD OF COUNTY COMMISSIONERS
MARION COUNTY, FLORIDA

CARL ZALAK III, CHAIRMAN

ATTEST:

GREGORY C. HARRELL, CLERK

NOTE: STATE PLANE COORDINATES ESTABLISHED BY GPS
OBSERVATIONS USING FLA. PERMANENT REFERENCE
NETWORK NAD(83)-(2011)-(EPOCH 2010.0000).

STATEMENT OF MAINTENANCE

THIS IS TO CERTIFY THAT THE MAINTAINED RIGHT-OF-WAY LIMITS AS SHOWN ON THIS MAP WERE IDENTIFIED BY EMPLOYEES OF THE ROAD DIVISION OF THE MARION COUNTY TRANSPORTATION DEPARTMENT AS HAVING BEEN MAINTAINED CONTINUOUSLY FOR FOUR YEARS WITHOUT INTERRUPTION IN ACCORDANCE TO SECTION 95.361 FLORIDA STATUTES

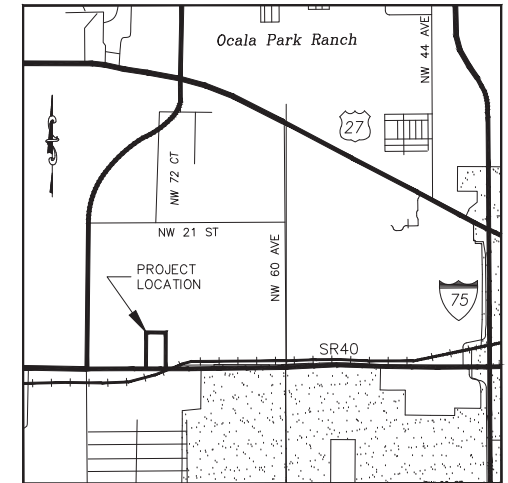
STEVEN COHOON, P.E.
COUNTY ENGINEER

DATE



DISTRICT 1 - CRAIG CURRY
DISTRICT 2 - KATHY BRYANT
DISTRICT 3 - MATT McCLAIN - VICE CHAIRMAN
DISTRICT 4 - CARL ZALAK III - CHAIRMAN
DISTRICT 5 - MICHELLE STONE

COUNTY ADMINISTRATOR - MOUNIR BOUYOUNES, P.E.
COUNTY ENGINEER - STEVEN COHOON, P.E.



LOCATION MAP
NOT TO SCALE

SECTIONS: 18 TOWNSHIP: 15 SOUTH RANGE: 21 EAST
MARION COUNTY, FLORIDA

INDEX TO PLANS

SHEET NUMBER	DRAWING DESCRIPTION
1	TITLE SHEET
2-3	MAINTAINED R/W PLANS

SURVEYOR'S CERTIFICATION

THIS SURVEY WAS PERFORMED FOR THE SPECIFIC PURPOSE OF ESTABLISHING THE LIMITS OF RIGHT-OF-WAY. I HEREBY CERTIFY THAT TO THE BEST OF MY BELIEF THIS IS A TRUE AND COMPLETE REPRESENTATION OF THE FIELD SURVEY PERFORMED UNDER THE DIRECTION OF JOHN R. ARCHER JR. PSM#5531 ON 10-12-2020. I FURTHER CERTIFY THAT SAID DRAWING IS IN COMPLIANCE WITH MINIMUM TECHNICAL STANDARDS AS SET FORTH BY THE FLORIDA BOARD OF PROFESSIONAL SURVEYORS AND MAPPERS.

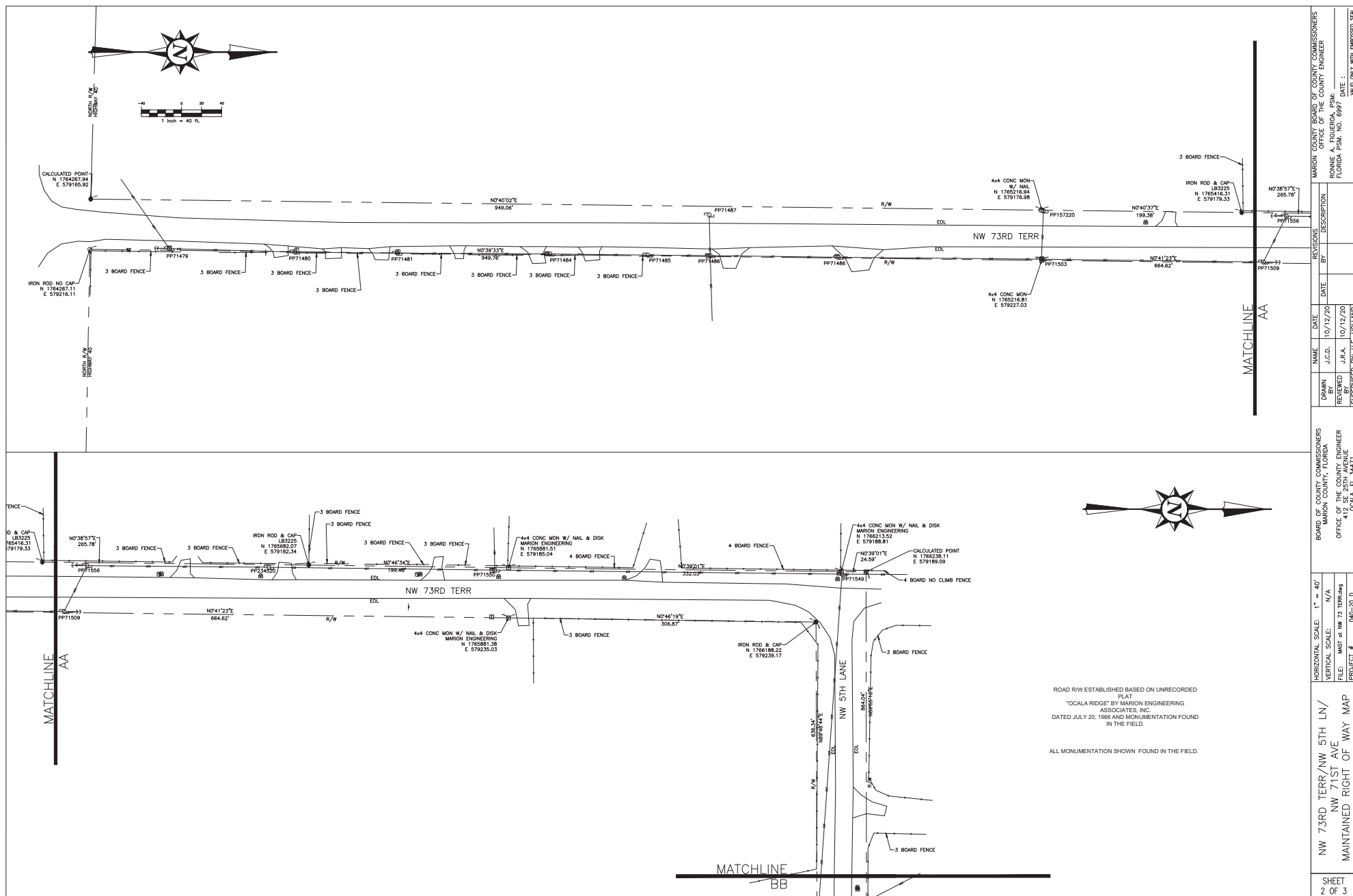
RONNIE A. FIGUEROA
PROFESSIONAL LAND SURVEYOR
VALID ONLY WITH
STATE OF FLORIDA #6997
EMBOSSED SEAL

DATE

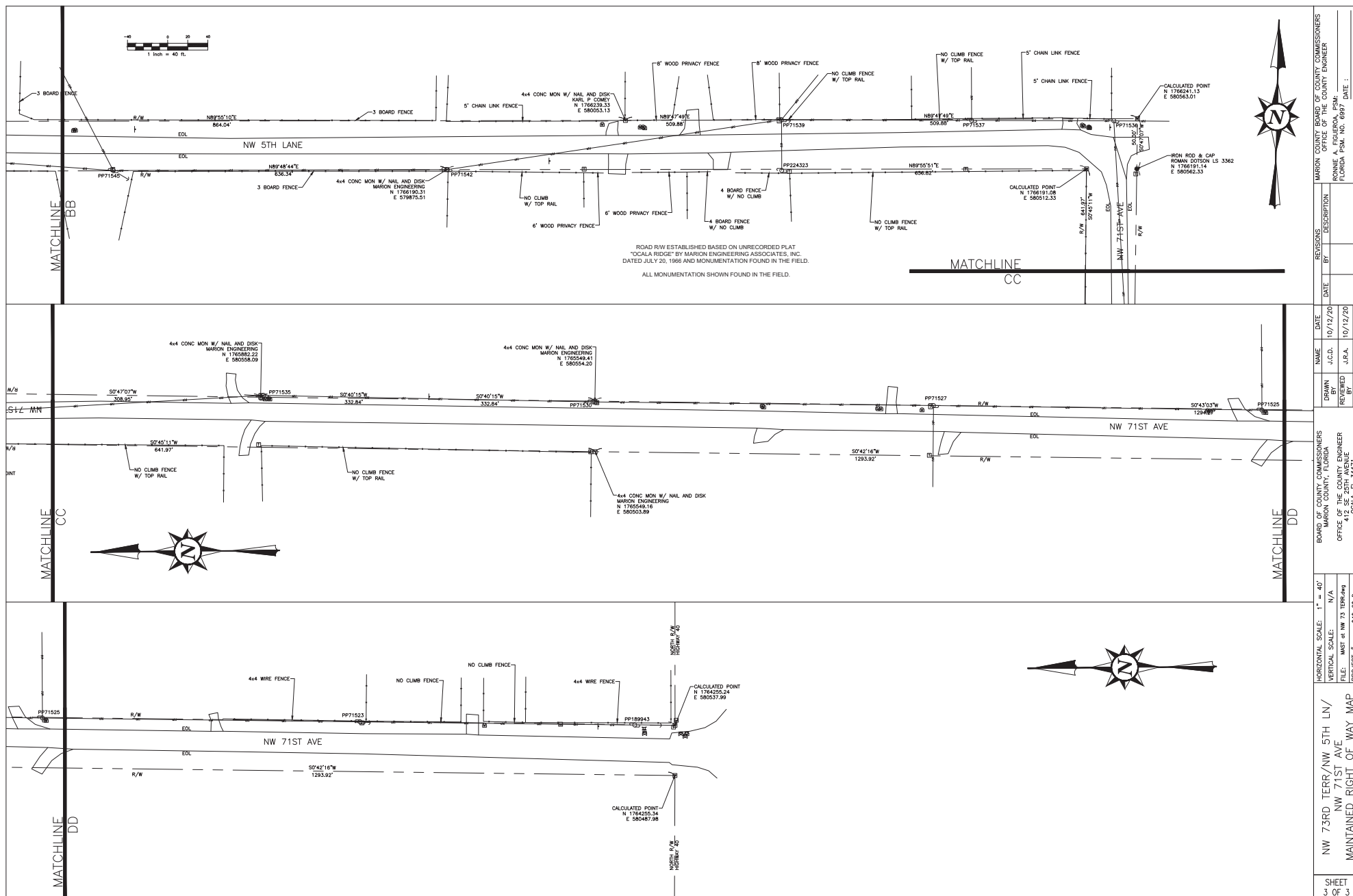
PROJECT NUMBER
040-20 D

DATE
10-12-20

SHEET NUMBER
1 OF 3



SHEET 2 OF 2	NW 73RD TERR/NW 5TH LN/ NW 71ST AVE MAINTAINED RIGHT OF WAY MAP	HORIZONTAL SCALE: 1" = 40'	BOARD OF COUNTY COMMISSIONERS MARION COUNTY, FLORIDA OFFICE OF THE COUNTY ENGINEER 412 S.E. 25TH AVENUE GAINESVILLE, FL 32609	NAME	DATE	REVISIONS	MARION COUNTY BOARD OF COUNTY COMMISSIONERS OFFICE OF THE COUNTY ENGINEER RONNIE A. FIGUEROA, P.E. FLORIDA P.E. NO. 0699 DATE: _____
		DRAWN BY J.C.D.		10/12/20	DATE	DESCRIPTION	
		REVIEWED BY J.P.A.		10/12/20			
		PROJECT # 040-20.0					



SHEET 3 OF 10	NW 73RD TERR/NW 5TH LN/ NW 71ST AVE MAINTAINED RIGHT OF WAY MAP	HORIZONTAL SCALE: 1" = 40'	BOARD OF COUNTY COMMISSIONERS MARION COUNTY, FLORIDA	REVISIONS		MARION COUNTY BOARD OF COUNTY COMMISSIONERS OFFICE OF THE COUNTY ENGINEER RONNIE A. FRIEDMAN, PSM: _____ FLORIDA PSM. NO. 6897 DATE: _____
		VERTICAL SCALE: 1/4"	OFFICE OF THE COUNTY ENGINEER 412 SE 50TH AVENUE OCALA, FL 34471	DATE	DESCRIPTION	
				NAME	DATE	
				DRAWN BY	J.C.D.	10/12/20
				REVIEWED BY	J.B.A.	10/12/20
				PROJECT	0404-20.0	
				JARED WILLY WITH EMMERSON SAYS		