



PUD/RESIDENTIAL APPLICATION IMPACTS TO FIRE RESCUE SERVICES

SANDY CLAY/PARCEL # 37896-000-00, 37896-000-01



Sandy Clay— Parcels 37896-000-00, 37896-000-01



- The request is to modify a 119.69-acre parcel, adding 442 detached single-family dwellings over the property. The PUD will be residential with a unit density of 3.69 units per acre. Previously, under case 230108ZP, it was approved for 452 units consisting of townhomes and single-family dwellings.

Common Definitions Used By Fire Rescue

- ISO- The ISO (Insurance Services Office) rating is a crucial assessment for fire departments in the United States, directly influencing both the department's operations and the community it serves.
 - The ISO's Public Protection Classification (PPC) program evaluates a fire department's ability to protect its community from fire-related incidents, and assigns a rating that can affect property insurance rates for homes and businesses within the department's jurisdiction.
 - MCFR has a ISO rating of 2/2Y
- NFPA-The National Fire Protection Association (NFPA) is a global nonprofit organization devoted to eliminating death, injury, property, and economic loss due to fire, electrical, and related hazards.
 - Founded in 1896, the NFPA develops and publishes more than 300 codes and standards that are designed to minimize the risk and effects of fire and other hazards.

Common Definitions Used By Fire Rescue

- Resource Reliability- refers to the number of incidents occurring simultaneously within the service area.
 - As the number of simultaneous incidents increases, the ability to respond to additional calls for service decreases.
 - Displayed in percentage of occurrence.

Level of concern for reliability	Percentage
Low	0-10%
Moderate	11-20%
High	21-30% or More

Common Definitions Used By Fire Rescue

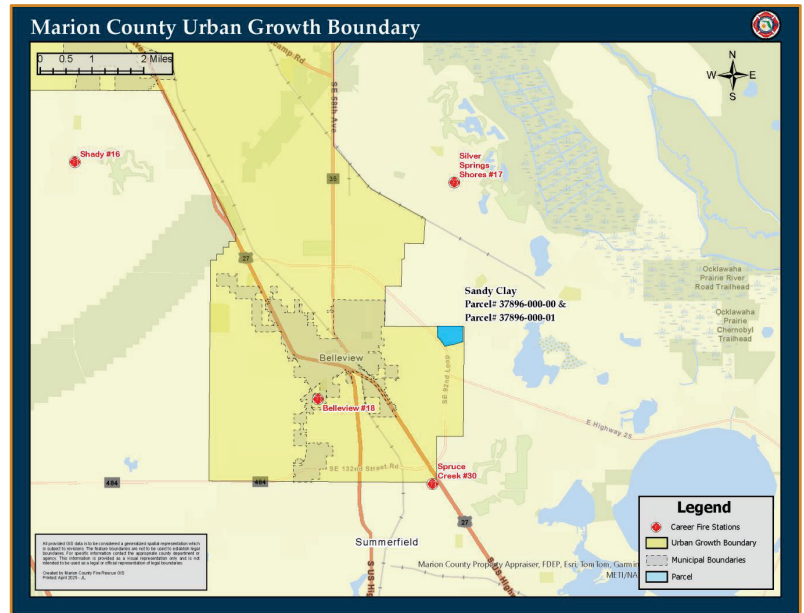
- Workload- Workload is the first factor for consideration. The measure of how much work an individual unit incurs could be as simple as a sum of incidents within a given period of time, such as a year.
 - However, incident duration can vary significantly from minutes to hours and thus this method does not provide the best measure of workload.
 - A more accurate method—while still not a perfect measure—is to consider the amount of time to which a unit is assigned and compare that to the amount of time the unit is in service, a measure referred to as unit hour utilization.
 - The imperfection of this measure is that it does not capture other on-duty activities such as training, station maintenance, apparatus maintenance, hydrant testing, hose testing, pre-incident planning, public education events, etc.

Common Standards Governing Fire Rescue

- NFPA 1061: Standard for Public Safety Telecommunications Personnel Professional Standards Qualifications
- NFPA 1201: Standard for Providing Fire and Emergency Services to the Public
- NFPA 1225, Standard for Emergency Services Communications
- NFPA 1660: Standard for Emergency, Continuity, and Crisis Management: Preparedness, Response, and Recovery
- NFPA 1620: Standard for Pre-Incident Planning
- NFPA 1710, Standard for the Organization and Deployment of Fire Suppression Operations, Emergency Medical Operations, and Special Operations to the Public by Career Fire Departments.
- NFPA 1720, Standard for the Organization and Deployment of Fire Suppression Operations, Emergency Medical Operations, and Special Operations to the Public by Volunteer Fire Departments.

URBAN GROWTH BOUNDARY

THE PARCEL IS INSIDE/OUTSIDE THE URBAN GROWTH BOUNDARY. THESE PARCELS FALL IN COMMISSION DISTRICT 3.



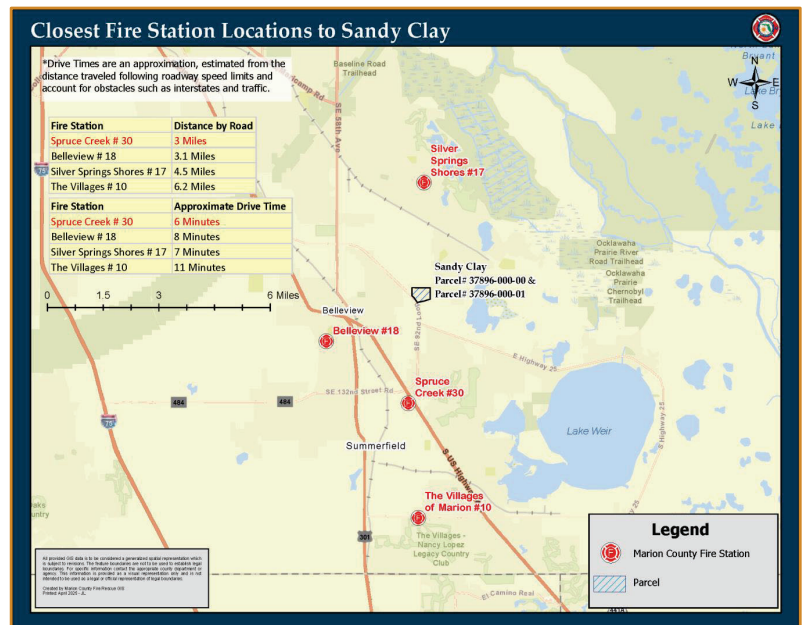
Empowering Marion for Success

7

CLOSEST FIRE STATION LOCATIONS

THE FOLLOWING FIRE STATIONS ARE LOCATED NEAR THE PARCEL FOR CONSIDERATION:

FIRE STATION 30, 3.0 ROAD MILES
 FIRE STATION 18, 3.1 ROAD MILES
 FIRE STATION 17, 4.5 ROAD MILES
 FIRE STATION 10, 6.2 ROAD MILES

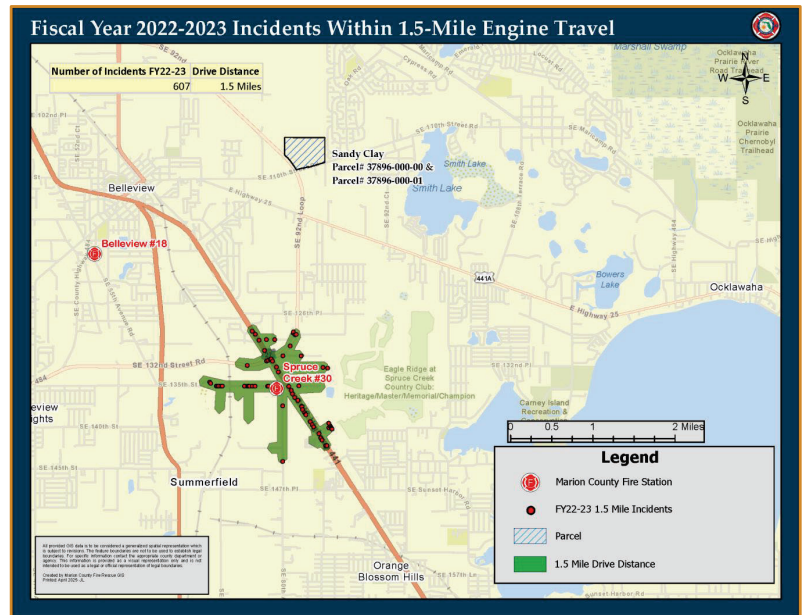


Empowering Marion for Success

8

FY22/23 INCIDENTS WITHIN 1.5-MILE ENGINE TRAVEL

THERE WERE 607 CALLS FOR SERVICE WITHIN THE 1.5 MILE ENGINE TRAVEL FOR FIRE STATION 30.

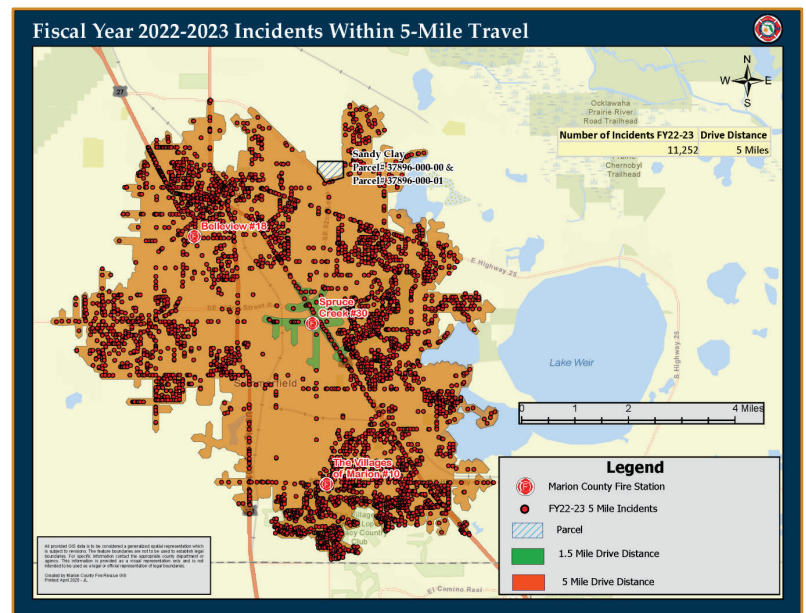


Empowering Marion for Success

9

FY22/23 INCIDENTS WITHIN 5-MILE TRAVEL

THERE WERE 11,252 CALLS FOR SERVICE WITHIN THE 5 MILE TRAVEL FOR FIRE STATION 30.

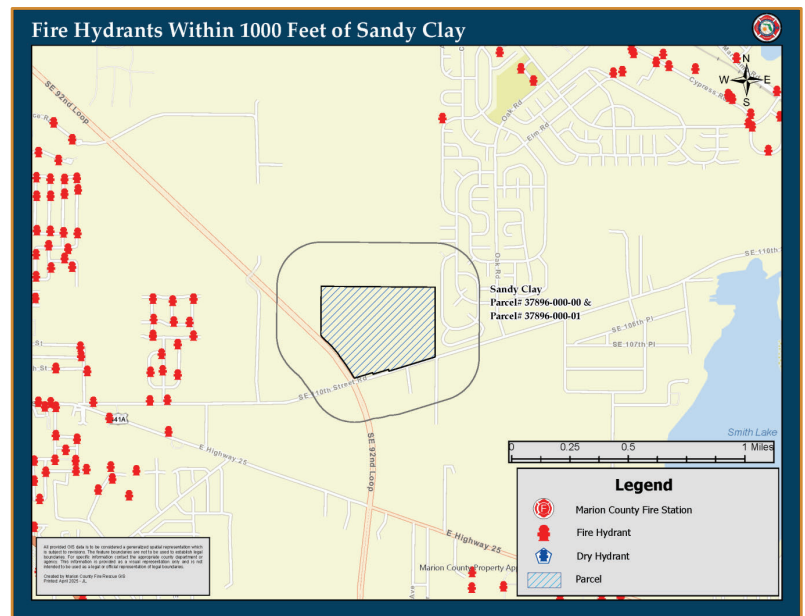


Empowering Marion for Success

10

FIRE HYDRANTS WITHIN 1000 FEET

THIS PARCEL IS WITHIN 1,000 FEET OF
0 FIRE HYDRANTS AND 0 DRY
HYDRANT.



Empowering Marion for Success

11

Closest Fire Suppression Response



- Station 30 (Spruce Creek)
 - 6-minute travel time
 - Low incident reliability concern per non-transport unit at 7.62% in FY22/23
 - 2,415 incidents/unit (Above Trigger Point)
- Station 18 (Bellevue)
 - 8-minute travel time
 - Moderate incident reliability concern per non-transport unit at 10.34% in FY22/23
 - 1,765 incidents/unit (Below Trigger Point)
 - Engine and Tower
- Station 17 (Silver Springs Shores)
 - 7-minute travel time
 - Low incident reliability concern per non-transport unit at 9.27% in FY22/23
 - 3,269 incidents/unit (Above Trigger Point)
- Station 10 (The Villages)
 - 11-minute travel time
 - Low incident reliability concern per non-transport unit at 11.56% in FY22/23
 - 4,255 incidents/unit (Above Trigger Point)

Note: non-transport units with greater than 2,000 incidents is measure to consider adding additional resources.

D-11

D-12

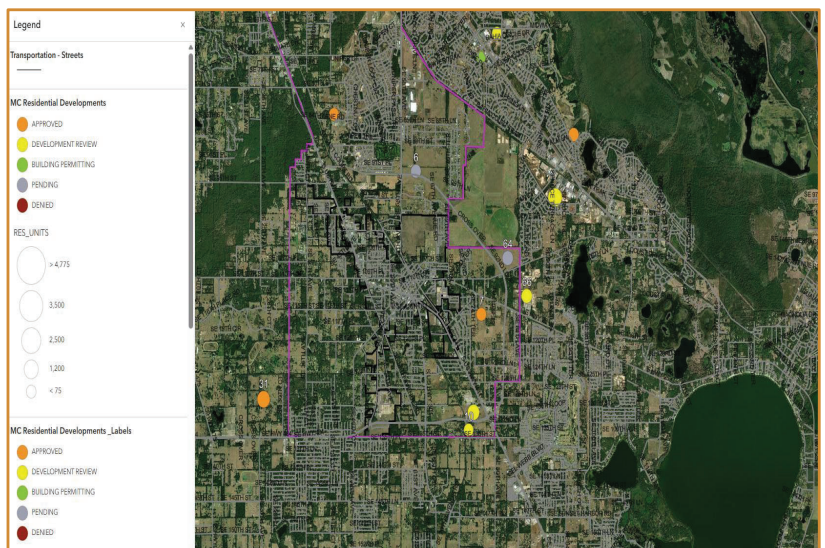
Closest Ambulance Response

- Station 30 (Spruce Creek)
 - 6-minute travel time
 - Low incident reliability concern per transport unit at 3.80% in FY22/23
 - 1,644 incidents/unit (Below Trigger Point)
 - Two Transport Units
- Station 18 (Bellevue)
 - 8-minute travel time
 - Moderate incident reliability concern per non-transport unit at 5.63% in FY22/23
 - 2,212 incidents/unit (Below Trigger Point)
 - Two Transport Units
- Station 17 (Silver Springs Shores)
 - 7-minute travel time
 - High incident reliability concern per non-transport unit at 28.19% in FY22/23
 - 4,214 incidents/unit (Above Trigger Point)
 - One Transport Unit
- Station 10 (The Villages)
 - 11-minute travel time
 - Low incident reliability concern per non-transport unit at 8.60% in FY22/23
 - 3,013 incidents/unit (Above Trigger Point)
 - Two Transport Units

Note: transport units with greater than 2,500 incidents is measure to consider adding additional resources.

OTHER RESIDENTIAL DEVELOPMENTS

THERE WERE 11 OTHER DEVELOPMENTS CONSIDERING FIRE RESCUE SERVICE LEVELS IN ADDITION TO THIS REQUEST.



Current Status of Fire Rescue Service in the Area.



D-15

- There are no additional budgeted units for this area to date.

Recommendations from Fire Rescue



D-16

- If approved, additional resources are warranted to handle increased demand from the proposed parcel.
 - The suppression units from three of the four closest fire stations are above the adopted capacity limits currently and additional growth will exacerbate these numbers.
 - The transport units from two of the four closest fire stations are above the adopted capacity limits currently and additional growth will exacerbate these numbers.
 - Additional Suppression unit is warranted.
 - Additional Transport Unit is warranted.



QUESTIONS?