



Marion County Board of County Commissioners

Office of the County Engineer

412 SE 25th Ave.
Ocala, FL 34471
Phone: 352-671-8686
Fax: 352-671-8687

DEVELOPMENT REVIEW COMMITTEE WAIVER REQUEST FORM

Date: 11/5/2024 Parcel Number(s): 48347-000-00 Permit Number: AR#30516

A. PROJECT INFORMATION: Fill in below as applicable:

Project Name: Heritage Oaks Commercial Residential
Subdivision Name (if applicable): _____
Unit _____ Block _____ Lot _____ Tract _____

B. PROPERTY OWNER'S AUTHORIZATION: The property owner's signature authorizes the applicant to act on the owner's behalf for this waiver request. The signature may be obtained by email, fax, scan, a letter from the property owner, or original signature below.

Name (print): Southeast 73rd Ave LLC
Signature: _____
Mailing Address: 208 Florida Ave City: Coleman
State: FL Zip Code: 33521 Phone #: _____
Email address: _____

C. APPLICANT INFORMATION: The applicant will be the point of contact during this waiver process and will receive all correspondence.

Firm Name (if applicable): Tillman & Associates Engineering, LLC Contact Name: Timothy C. Brooker, P.E.
Mailing Address: 1720 SE 16th Ave., Bldg 100 City: Ocala
State: FL Zip Code: 34471 Phone #: (352) 387-4540
Email address: permits@tillmaneng.com

D. WAIVER INFORMATION:

Section & Title of Code (be specific): _____ 6.12.12 - Sidewalks
Reason/Justification for Request (be specific): Waiver requested to not construct sidewalk along SE 73rd Avenue and to pay fee in lieu of as there are is no existing sidewalk along SE 73rd Avenue.

DEVELOPMENT REVIEW USE:

Received By: _____ Date Processed: _____ Project # _____ AR # _____

ZONING USE: Parcel of record: Yes No Eligible to apply for Family Division: Yes No
Zoned: _____ ESOZ: _____ P.O.M. _____ Land Use: _____ Plat Vacation Required: Yes No
Date Reviewed: _____ Verified by (print & initial): _____

Tillman & Associates
 ENGINEERING, LLC.
 CIVIL ENGINEERING - PLANNING - LANDSCAPE ARCHITECTURE - ENVIRONMENTAL
 1720 SE 16th Ave, Bldg 100, Ocala, FL 34471
 Office: (352) 387-4540 Fax: (352) 387-4545
 CERTIFICATE OF AUTHORIZATION #20795

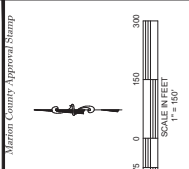
NO.	REVISIONS	DATE

IMPROVEMENT PLANS
 HERITAGE OAKS
 MARION COUNTY, FLORIDA
AERIAL PHOTOGRAPH

DATE: 5/17/2021
 DRAWN BY: JLS
 CHECKED BY: JLS
 JOB NO.: 22-2126

SHEET: 03.01

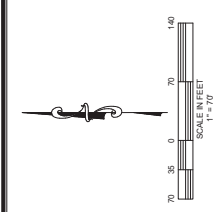
Marion County Approval Stamp



NOT VALID UNLESS SIGNED AND SEALED BY A PROFESSIONAL ENGINEER

DATE	REVISIONS

Marion County Approval Stamp

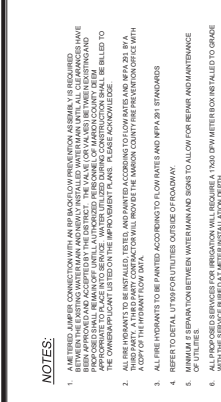


- WATER LEGEND:**
- WATER MAIN
 - FIRE HYDRANT ASSEMBLY (FHA)
 - TEE
 - BRND
 - DOUBLE SERVICE
 - SINGLE SERVICE
 - GATE VALVE & BOX
 - REDUCER
 - BLOW OFF ASSEMBLY
 - FIRE HYDRANT NUMBER

- SANITARY SEWER LEGEND:**
- SANITARY SEWER
 - MANHOLE
 - SANITARY MANHOLE NUMBER
 - DOUBLE SERVICE
 - SINGLE SERVICE

- NOTES:**
- A RETIRED LUMBER CONNECTION OR BRACKET OR PREVENTION ASSEMBLY IS REQUIRED FOR ALL JOINTS IN ALL UTILITY LINES. THE VALVE OR VALVES BEING INSTALLED HAVE BEEN APPROVED AND ACCEPTED FOR THE DISTRICT. THE VALVE OR VALVES BEING INSTALLED ARE APPROVED TO BE USED FOR SERVICE. WATER UTILIZED DURING CONSTRUCTION SHALL BE BILLED TO THE PROPERTY OWNER.
 - ALL HYDRANTS TO BE INSTALLED SHALL BE INSTALLED ACCORDING TO MARION COUNTY SPECIFICATIONS.
 - ALL HYDRANTS TO BE INSTALLED SHALL BE INSTALLED ACCORDING TO MARION COUNTY SPECIFICATIONS.
 - REFER TO DETAIL UTILITY UTILITY OFFICE FOR MORE INFORMATION.
 - MINIMUM SEPARATION BETWEEN WATER MAIN AND SEWER TO ALLOW FOR REPAIR AND MAINTENANCE OF UTILITIES.
 - ALL PROPOSED SERVICES FOR PROVISION SHALL BE INSTALLED AT A 1200 EPDM RUBBER BOX TIED TO GRADE WITH THE SERVICE LINE AND THE MAIN SHALL BE INSTALLED AT A 1200 EPDM RUBBER BOX TIED TO GRADE.

ALL PROPOSED POTABLE WATER AND SANITARY SEWER SERVICES SHALL BE INSTALLED ACCORDING TO MARION COUNTY SPECIFICATIONS. SMALL COMPLY WITH THE LATEST MARION COUNTY SPECIFICATIONS.



SEE OFFSITE UTILITY PLAN
 SHEET (06.02)

NOT VALID UNLESS SIGNED AND SEALED BY A PROFESSIONAL ENGINEER

Tillman & Associates
ENGINEERING, LLC
 CIVIL ENGINEERING - PLANNING - LANDSCAPE ARCHITECTURE - ENVIRONMENTAL
 1720 SE 16th Ave, Bldg 100, Ocala, FL 34471
 Office: (352) 387-4540 Fax: (352) 387-4545
 CERTIFICATE OF AUTHORIZATION #26756

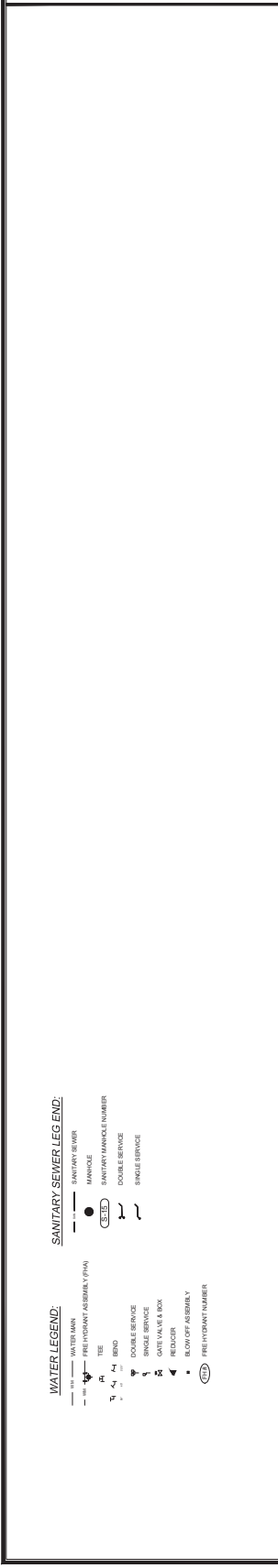
DATE	REVISIONS

IMPROVEMENT PLANS
HERITAGE OAKS
 MARION COUNTY, FLORIDA
OFFSITE UTILITY PLAN

DATE: 5/11/2011
 DRAWN BY: JLS
 CHECKED BY: JLS
 JOB NO.: 22-2128

SHEET: 06.02

Marion County Approval Stamp



Marion County Approval Stamp

Marion County Approval Stamp

Marion County Approval Stamp

Marion County Approval Stamp

Marion County Approval Stamp

Marion County Approval Stamp

Marion County Approval Stamp

Marion County Approval Stamp

Marion County Approval Stamp

Marion County Approval Stamp

Marion County Approval Stamp

Marion County Approval Stamp

Marion County Approval Stamp

Marion County Approval Stamp

Marion County Approval Stamp

Marion County Approval Stamp

Marion County Approval Stamp

Marion County Approval Stamp

Marion County Approval Stamp

Marion County Approval Stamp

Marion County Approval Stamp

Marion County Approval Stamp

Marion County Approval Stamp

Marion County Approval Stamp

Marion County Approval Stamp

Marion County Approval Stamp

Marion County Approval Stamp

Marion County Approval Stamp

Marion County Approval Stamp

Marion County Approval Stamp

Marion County Approval Stamp

Marion County Approval Stamp

Marion County Approval Stamp

Marion County Approval Stamp

Marion County Approval Stamp

Marion County Approval Stamp

Marion County Approval Stamp

Marion County Approval Stamp

Marion County Approval Stamp

Marion County Approval Stamp

Marion County Approval Stamp

Marion County Approval Stamp

Marion County Approval Stamp

Marion County Approval Stamp

Marion County Approval Stamp

Marion County Approval Stamp

Marion County Approval Stamp

WATER LEGEND:
 WATER MAIN
 HYDRANT (ASSEMBLY) (H)
 TIE
 END
 DOUBLE SERVICE
 SINGLE SERVICE
 SERVICE TO BE EXAMINED
 REDUCER
 BLOW OFF ASSEMBLY
 PRE-INSTANT NUMBER

SANITARY SEWER LEGEND:
 SANITARY SEWER
 MANHOLE
 SANITARY MANHOLE NUMBER
 DOUBLE SERVICE
 SINGLE SERVICE

SEE MASTER UTILITY PLAN SHEET 06.01

NOT VALID UNLESS SIGNED AND SEALED BY A PROFESSIONAL ENGINEER

TILLMAN & ASSOCIATES
 ENGINEERING, LLC
 CIVIL ENGINEERING - PLANNING - LANDSCAPE ARCHITECTURE - ENVIRONMENTAL
 CERTIFICATE OF AUTHORIZATION #26756
 Office: (352) 387-4540 Fax: (352) 387-4545
 1720 SE 16th Ave. Bldg 100, Ocala, FL 34471

DATE	REVISIONS

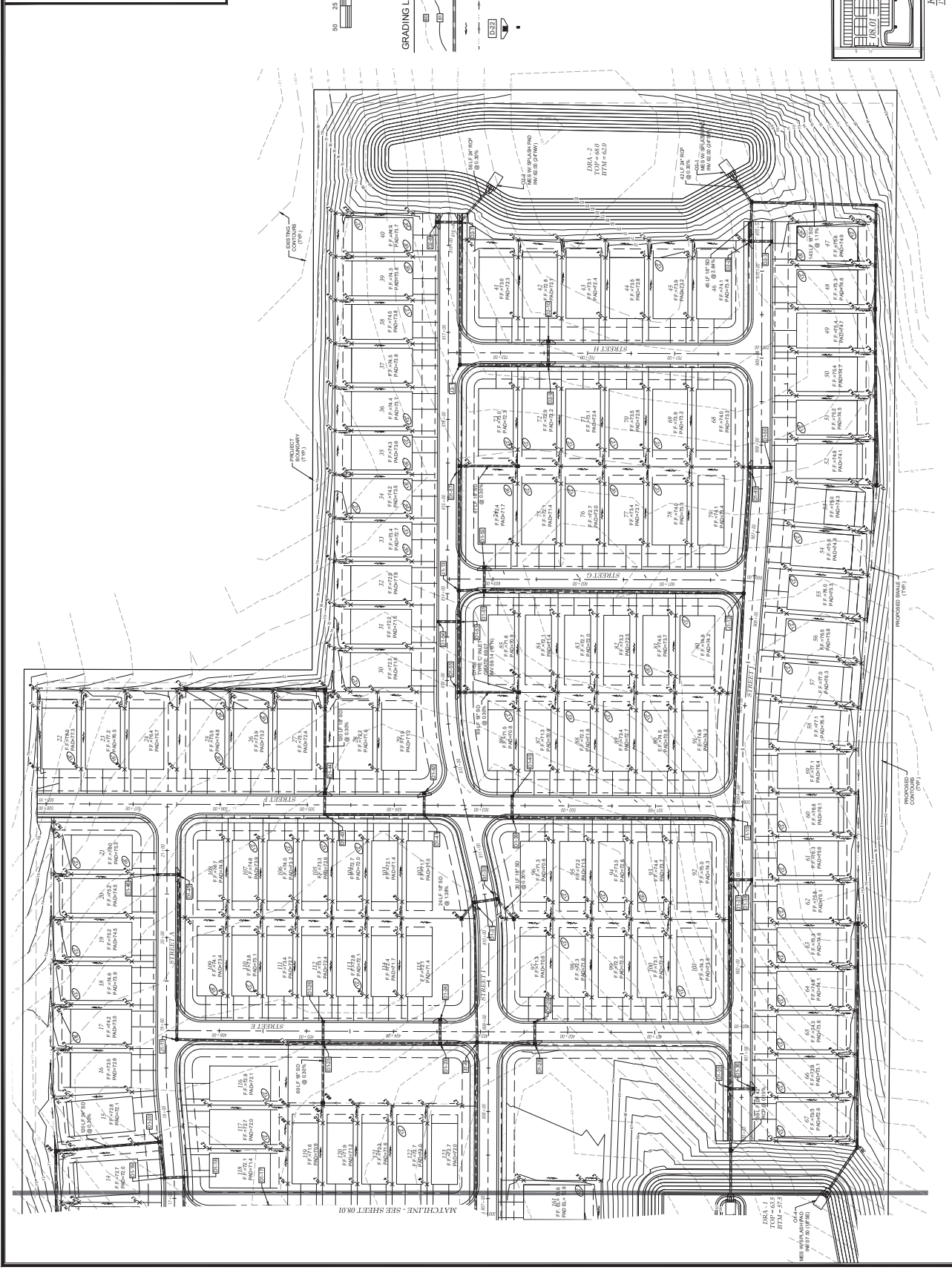
IMPROVEMENT PLANS
 HERITAGE CANS
 MARION COUNTY, FLORIDA
 LOT GRADING PLAN

DATE: 5/11/2021
 DRAWN BY: AS
 CHECKED BY: AS
 JOB NO.: 22-0128

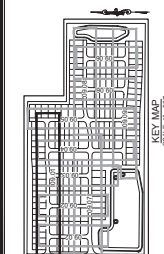
SHEET: 08.02



- GRADING LEGEND**
- EXISTING CONTOURS
 - PROPOSED CONTOURS
 - PROPOSED FLOW DIRECTION
 - PROPOSED SWALE BOTTOM
 - PROPOSED STRUCTURE ID
 - DROP CURB INLET
 - VALLEY GUTTER INLET



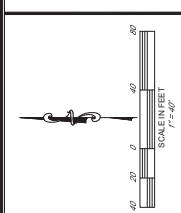
NOT VALID UNLESS SIGNED AND SEALED BY A PROFESSIONAL ENGINEER



- WATER LEGEND:**
- WATER MAIN
 - FIRE FIGHTING ASSEMBLY (FHA)
 - TEE
 - HEAD
 - GATE VALVE & BOX
 - REDUCER
 - BLOW OFF ASSEMBLY
 - FIRE HYDRANT NUMBER
 - SINGLE WATER SERVICE
 - DOUBLE WATER SERVICE

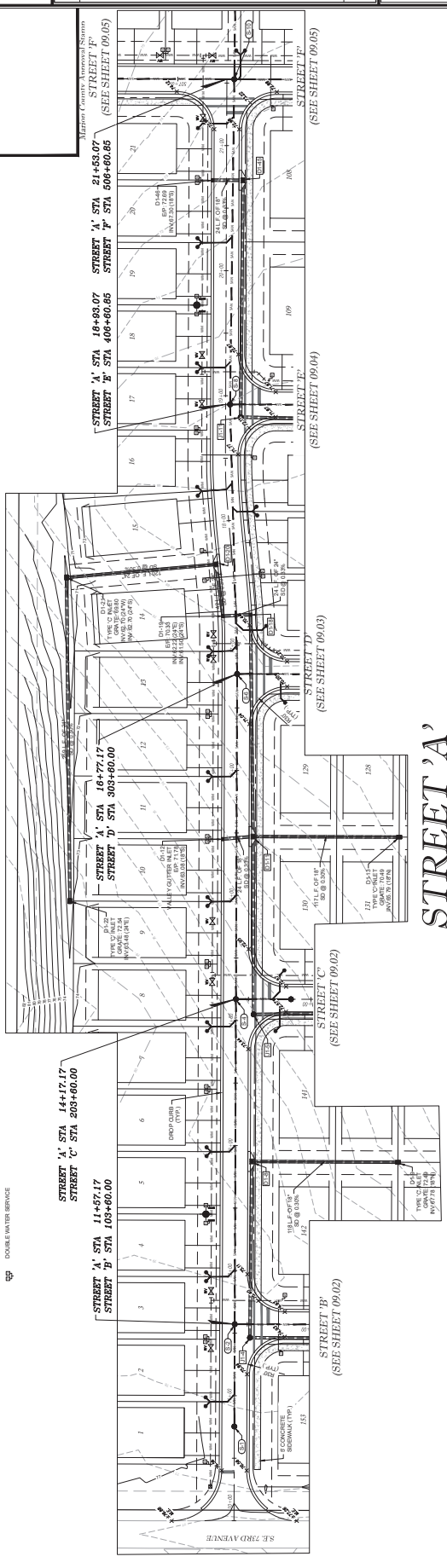
- SANITARY SEWER LEGEND:**
- SANITARY SEWER
 - MANHOLE
 - MANHOLE NUMBER
 - SINGLE SANITARY SERVICE
 - DOUBLE SANITARY SERVICE

- STORM WATER LEGEND:**
- DROP CURB INLET
 - STORM MANHOLE
 - VALLEY OFFSET
 - STORM PIPE
 - STORM STRUCTURE ID

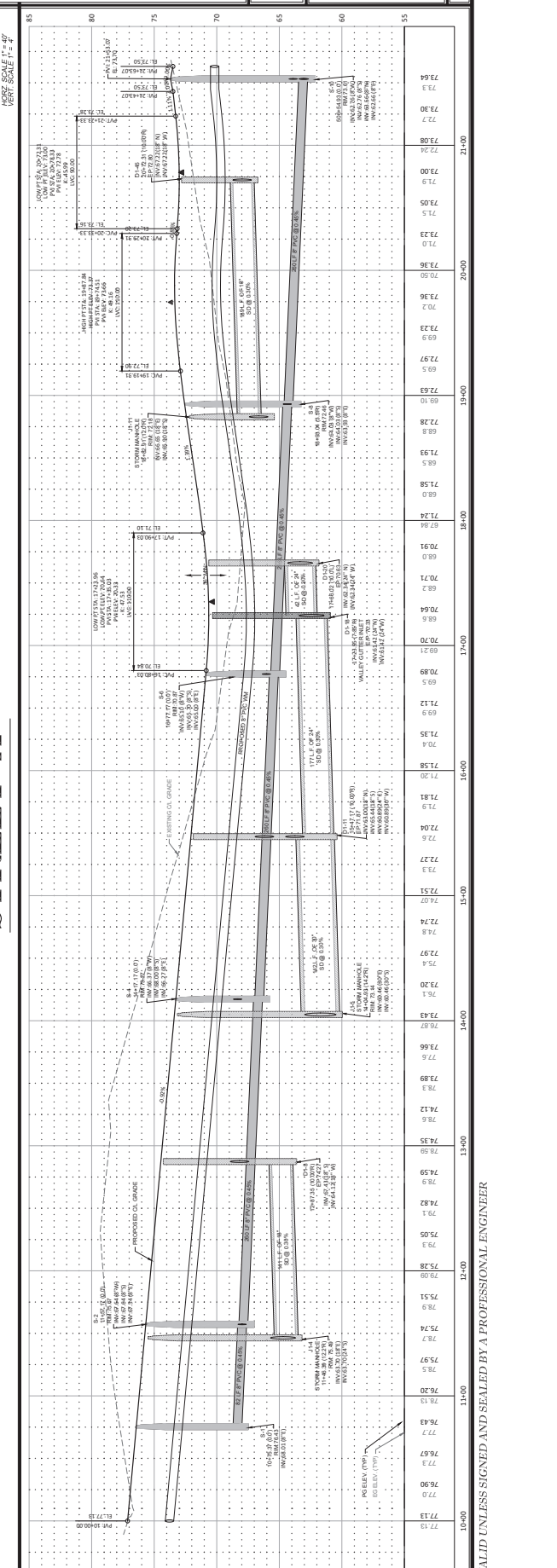


William & Associates
 ENGINEERING, LLC
 CIVIL ENGINEERING - PLANNING - LANDSCAPE ARCHITECTURE - ENVIRONMENTAL
 OFFICE: (352) 387-4540 Fax: (352) 387-4540
 1720 SE 16th Ave, Bldg 100, Ocala, FL 34471
 CERTIFICATE OF AUTHORIZATION #26256

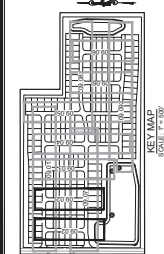
NO.	DATE	REVISIONS



STREET 'A'



IMPROVEMENT PLANS
 PLAN & PROFILE
 HERITAGE OAKS
 MARION COUNTY, FLORIDA
 STREET 'A'



- WATER LEGEND:**
- WATER MAIN
 - FIRE HYDRANT ASSEMBLY (FHA)
 - TEE
 - BRID
 - GATE VALVE & BOX
 - REDUCER
 - BLOW OFF ASSEMBLY
 - FIRE HYDRANT NUMBER
 - SINGLE WATER SERVICE
 - DOUBLE WATER SERVICE

- SANITARY SEWER LEGEND:**
- SANITARY SEWER
 - MANHOLE
 - MANHOLE NUMBER
 - SINGLE SANITARY SERVICE
 - DOUBLE SANITARY SERVICE

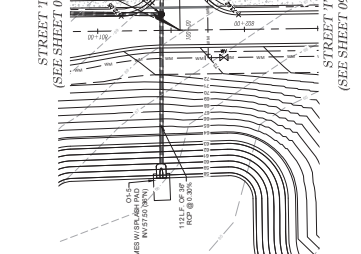
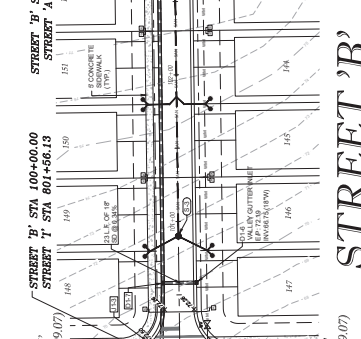
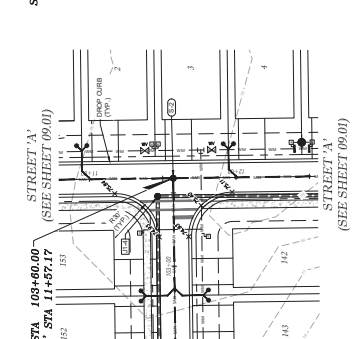
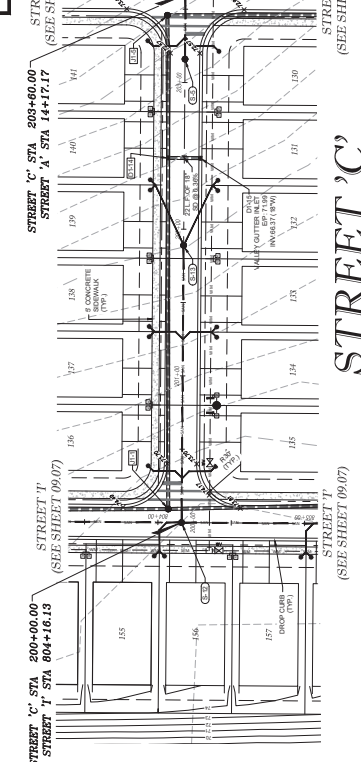
- STORM WATER LEGEND:**
- DROP CURB INLET
 - STORM MANHOLE
 - VALLEY CUTTER
 - STORM PIPE
 - STORM STRUCTURE



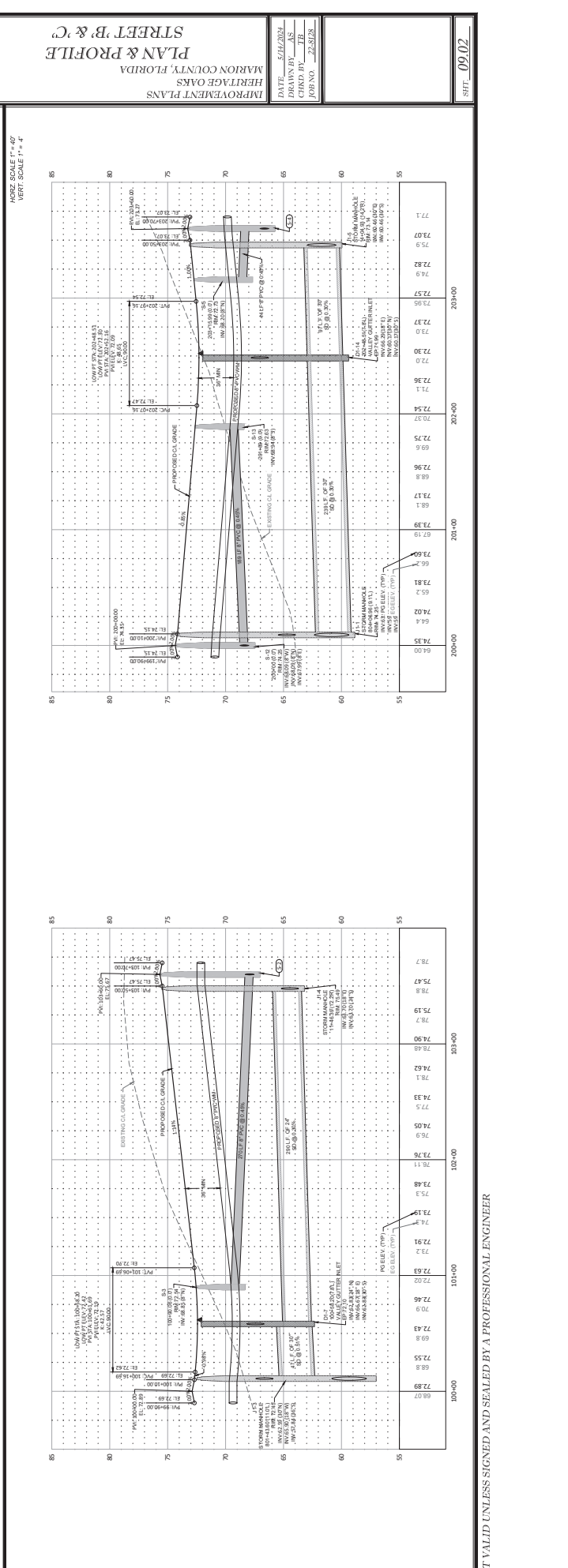
William & Associates
 ENGINEERING, LLC
 CIVIL ENGINEERING - PLANNING - LANDSCAPE ARCHITECTURE - ENVIRONMENTAL
 1720 SE 16th Ave, Bldg 100, Coral Gables, FL 33471
 Office: (305) 387-4540 Fax: (305) 387-4545
 CERTIFICATE OF AUTHORIZATION #27956

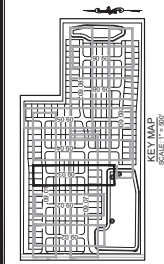
DATE	REVISIONS

Marion County Approval Stamp



STREET 'C' (SEE SHEET 09.07) **STREET 'B'** (SEE SHEET 09.07) **STREET 'A'** (SEE SHEET 09.01)





WATER LEGEND:

- WATER MAIN
- PREPOTANT ASSEMBLY (PWA)
- TEE
- BEND
- DATE VALVE & BOX
- REDUCER
- BLOW OFF ASSEMBLY
- PREPOTANT NUMBER
- SINGLE WATER SERVICE
- DOUBLE WATER SERVICE

SANITARY SEWER LEGEND:

- SANITARY SEWER
- MANHOLE
- MANHOLE NUMBER
- SINGLE SANITARY SERVICE
- DOUBLE SANITARY SERVICE

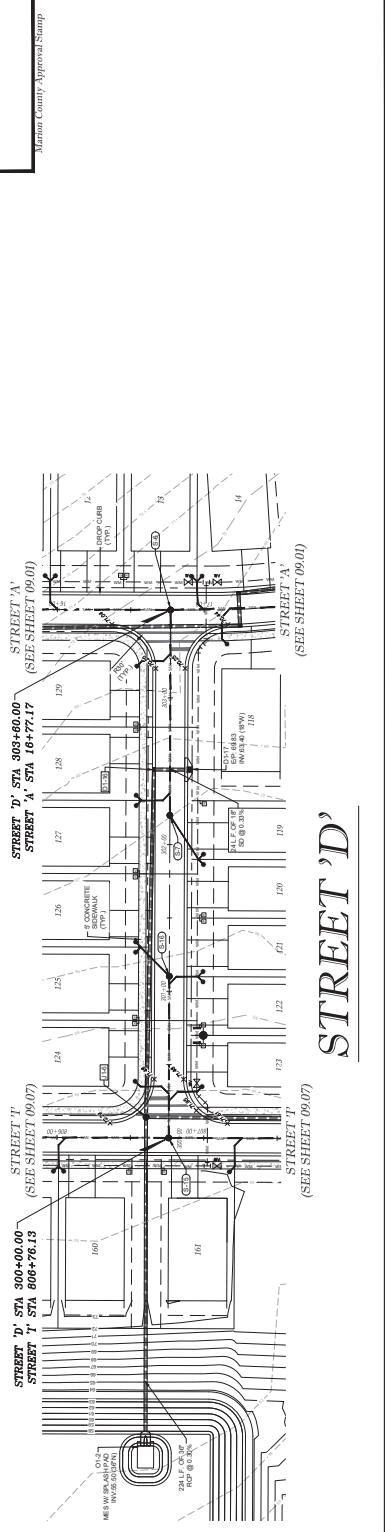
STORM WATER LEGEND:

- DROP CURB INLET
- STORM MANHOLE
- WALKER CATCHER
- STORM PIPE
- STORM STRUCTURE ID



William & Associates
ENGINEERING, LLC
CIVIL ENGINEERING - PLANNING - LANDSCAPE ARCHITECTURE - ENVIRONMENTAL
1720 SE 16th Ave, Bldg 100, Coral Gables, FL 33473
Office: (305) 387-4540 Fax: (305) 387-4540
CERTIFICATE OF AUTHORIZATION #27256

NO.	DATE	REVISIONS



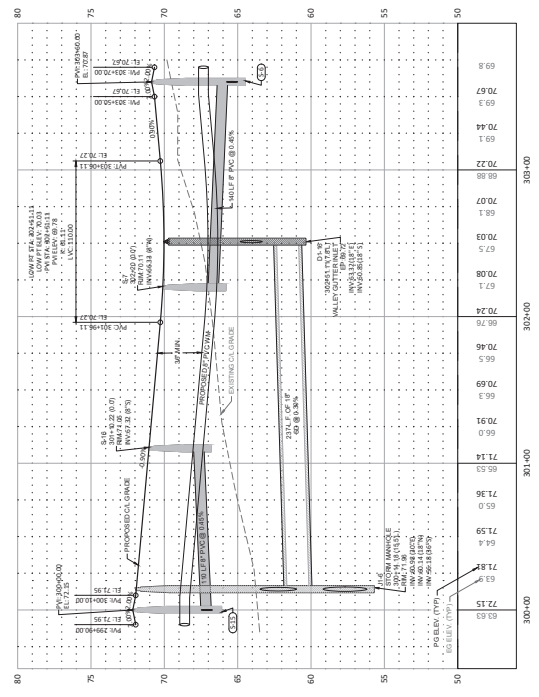
Marion County Approval Stamp

HORIZ. SCALE 1" = 40'
VERT. SCALE 1" = 4'

IMPROVEMENT PLANS
HERITAGE OAKS
MARION COUNTY, FLORIDA
PLAN & PROFILE
STREET 'D'

DATE: 11/15/2011
SCALE: 1" = 40'
CHECK BY: JTB
JOB NO.: 22-5128

SHEET: 09.03



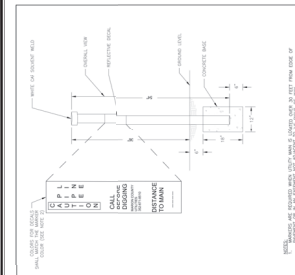
NOT VALID UNLESS SIGNED AND SEALED BY A PROFESSIONAL ENGINEER

DATE	REVISIONS

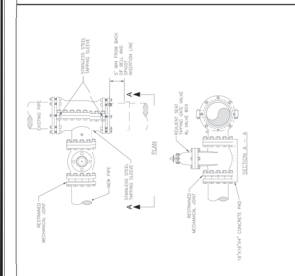
DISTRIBUTION DETAILS
POTABLE WATER
 HERRING OAKS
 MARION COUNTY, FLORIDA
 IMPROVEMENT PLANS

DATE: 07/20/2023
 DRAWN BY: JLB
 CHECK BY: JLB
 JOB NO: 22-5128
 SHEET: 10.01

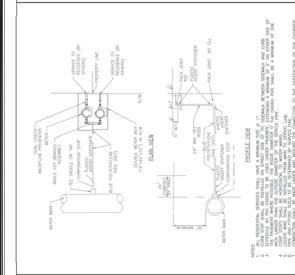
Marion County Approval Stamp
 [Professional Engineer Seal Area]



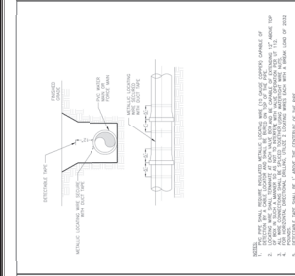
UTILITY MAIN MANHOLE
 7.3.2.2
 10/1
 10/1



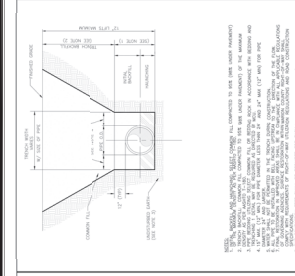
TAPPING SLAVE AND GATE VALVE ASSEMBLY
 7.3.2.2
 10/1
 10/1



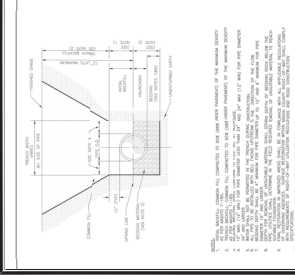
WATER AND RECLAIMED WATER SERVICES
 7.3.2.2
 10/1
 10/1



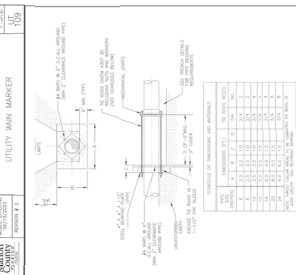
PIPE LOGGING WIRE AND INFEEDABLE T-SIDE
 7.3.2.2
 10/1
 10/1



BEDDING AND TRENCHING 2
 7.3.2.2
 10/1
 10/1



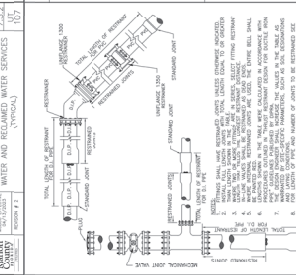
BEDDING AND TRENCHING 1
 7.3.2.2
 10/1
 10/1



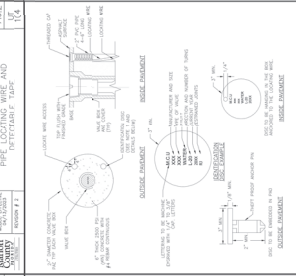
THURST COLLAR WATER MAINS
 7.3.2.2
 10/1
 10/1

MINIMUM RESTRAINED LENGTH (FEET)	MINIMUM RESTRAINED LENGTH (FEET)	MINIMUM RESTRAINED LENGTH (FEET)	MINIMUM RESTRAINED LENGTH (FEET)
1.0	1.0	1.0	1.0
1.5	1.5	1.5	1.5
2.0	2.0	2.0	2.0
2.5	2.5	2.5	2.5
3.0	3.0	3.0	3.0
3.5	3.5	3.5	3.5
4.0	4.0	4.0	4.0
4.5	4.5	4.5	4.5
5.0	5.0	5.0	5.0
5.5	5.5	5.5	5.5
6.0	6.0	6.0	6.0
6.5	6.5	6.5	6.5
7.0	7.0	7.0	7.0
7.5	7.5	7.5	7.5
8.0	8.0	8.0	8.0
8.5	8.5	8.5	8.5
9.0	9.0	9.0	9.0
9.5	9.5	9.5	9.5
10.0	10.0	10.0	10.0

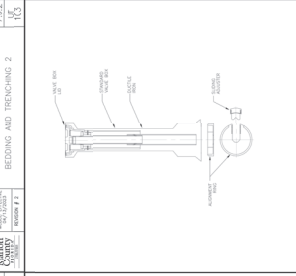
RESTRAINED PIPE TABLE
 7.3.2.2
 10/1
 10/1



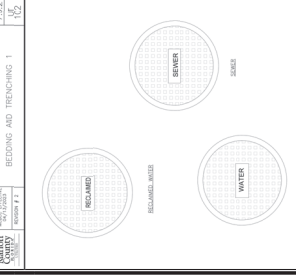
RESTRAINED PIPE TABLE
 7.3.2.2
 10/1
 10/1



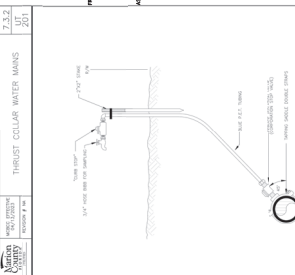
VALVE BOX PAD
 7.3.2.2
 10/1
 10/1



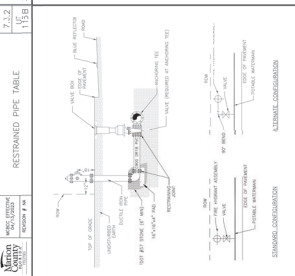
SEALED VALVE BOX ADJUSTABLE
 7.3.2.2
 10/1
 10/1



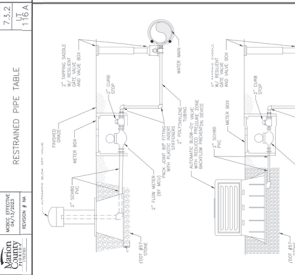
TYPICAL VALVE BOX COVER
 7.3.2.2
 10/1
 10/1



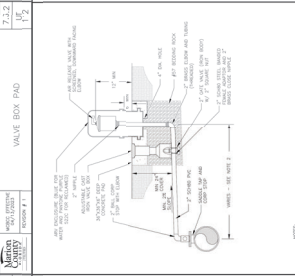
UTILITY PLACEMENT DETAIL
 7.3.2.2
 10/1
 10/1



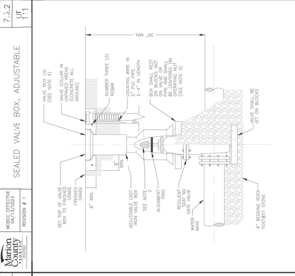
FIRE HYDRANT ASSEMBLY
 7.3.2.2
 10/1
 10/1



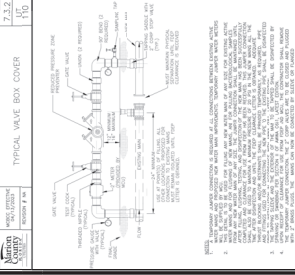
AUTOMATIC BLOW OFF VALVE WATER MAIN
 7.3.2.2
 10/1
 10/1



ADVERSELY OFFSET WATER OR RECLAIM AIR RELEASE VALVE
 7.3.2.2
 10/1
 10/1



GATE VALVE WATER AND RECLAIMED MAINS
 7.3.2.2
 10/1
 10/1



TEMPORARY JAMPER CONNECTION
 7.3.2.2
 10/1
 10/1

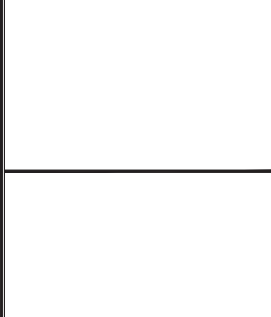


TEMPORARY SAMPLE POINT
 7.3.2.2
 10/1
 10/1

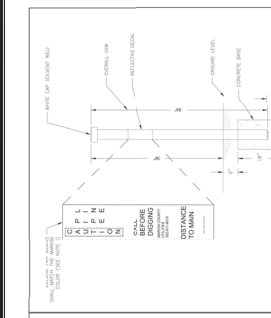
DATE	REVISIONS

IMPROVEMENT PLANS
 HERITAGE OAKS
 MARION COUNTY, FLORIDA
SANITARY SEWER DETAILS

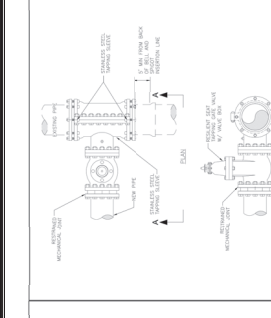
DATE: 08/20/2018	NO. 11.01
CHKD BY: JTB	
DESIGNED BY: JTB	



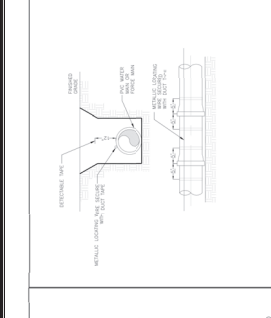
7.3.2 UT. 109 MARION COUNTY RECORD # 1 MARION COUNTY RECORD # 2	7.3.2 UT. 109 UTILITY MAN MARKER
--	--



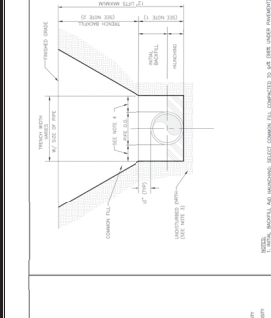
7.3.2 UT. 110 MARION COUNTY RECORD # 1 MARION COUNTY RECORD # 2	7.3.2 UT. 110 THRUST COLLAR FORCIBLE MANG
--	---



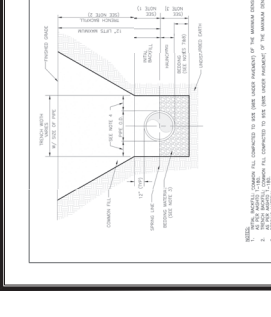
7.3.2 UT. 116B MARION COUNTY RECORD # 1 MARION COUNTY RECORD # 2	7.3.2 UT. 116B RESTRAINED PIPE TABLE
---	--



7.3.2 UT. 116A MARION COUNTY RECORD # 1 MARION COUNTY RECORD # 2	7.3.2 UT. 116A RESTRAINED PIPE TABLE
---	--



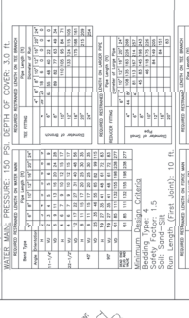
7.3.2 UT. 112 MARION COUNTY RECORD # 1 MARION COUNTY RECORD # 2	7.3.2 UT. 112 VALVE BOX PAD
--	---



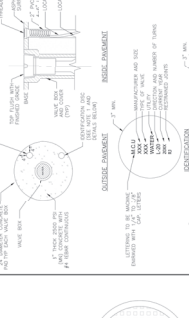
7.3.2 UT. 110 MARION COUNTY RECORD # 1 MARION COUNTY RECORD # 2	7.3.2 UT. 110 TYPICAL VALVE BOX COVER
--	---



7.3.2 UT. 116 MARION COUNTY RECORD # 1 MARION COUNTY RECORD # 2	7.3.2 UT. 116 PRECAST CONCRETE MANHOLE
--	--



7.3.2 UT. 116A MARION COUNTY RECORD # 1 MARION COUNTY RECORD # 2	7.3.2 UT. 116A RESTRAINED PIPE TABLE
---	--



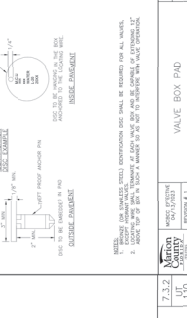
7.3.2 UT. 112 MARION COUNTY RECORD # 1 MARION COUNTY RECORD # 2	7.3.2 UT. 112 VALVE BOX PAD
--	---



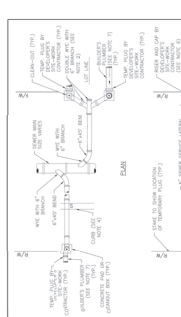
7.3.2 UT. 110 MARION COUNTY RECORD # 1 MARION COUNTY RECORD # 2	7.3.2 UT. 110 TYPICAL VALVE BOX COVER
--	---



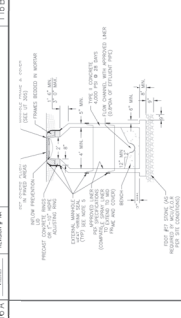
7.3.2 UT. 116 MARION COUNTY RECORD # 1 MARION COUNTY RECORD # 2	7.3.2 UT. 116 PRECAST CONCRETE MANHOLE
--	--



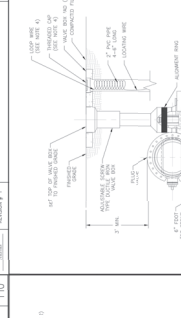
7.3.2 UT. 116A MARION COUNTY RECORD # 1 MARION COUNTY RECORD # 2	7.3.2 UT. 116A RESTRAINED PIPE TABLE
---	--



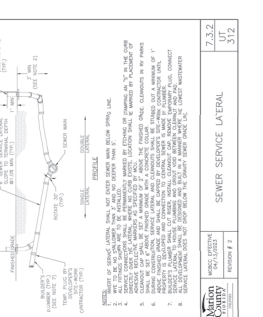
7.3.2 UT. 116B MARION COUNTY RECORD # 1 MARION COUNTY RECORD # 2	7.3.2 UT. 116B RESTRAINED PIPE TABLE
---	--



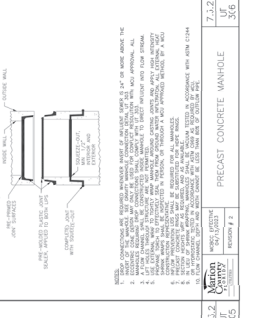
7.3.2 UT. 116A MARION COUNTY RECORD # 1 MARION COUNTY RECORD # 2	7.3.2 UT. 116A RESTRAINED PIPE TABLE
---	--



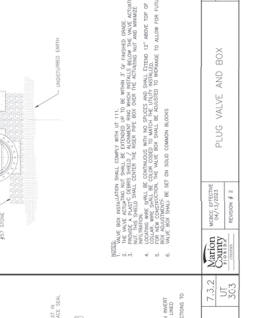
7.3.2 UT. 112 MARION COUNTY RECORD # 1 MARION COUNTY RECORD # 2	7.3.2 UT. 112 VALVE BOX PAD
--	---



7.3.2 UT. 110 MARION COUNTY RECORD # 1 MARION COUNTY RECORD # 2	7.3.2 UT. 110 TYPICAL VALVE BOX COVER
--	---



7.3.2 UT. 116 MARION COUNTY RECORD # 1 MARION COUNTY RECORD # 2	7.3.2 UT. 116 PRECAST CONCRETE MANHOLE
--	--



7.3.2 UT. 116A MARION COUNTY RECORD # 1 MARION COUNTY RECORD # 2	7.3.2 UT. 116A RESTRAINED PIPE TABLE
---	--



7.3.2 UT. 116B MARION COUNTY RECORD # 1 MARION COUNTY RECORD # 2	7.3.2 UT. 116B RESTRAINED PIPE TABLE
---	--



7.3.2 UT. 116A MARION COUNTY RECORD # 1 MARION COUNTY RECORD # 2	7.3.2 UT. 116A RESTRAINED PIPE TABLE
---	--



7.3.2 UT. 112 MARION COUNTY RECORD # 1 MARION COUNTY RECORD # 2	7.3.2 UT. 112 VALVE BOX PAD
--	---

Office: (352) 387-4540 Fax: (352) 387-4545
 1220 SE 16th Ave, Bldg 100, Ocala, FL 34471
 CIVIL ENGINEERING - PLANNING - LANDSCAPE ARCHITECTURE - ENVIRONMENTAL
Thuman & Associates
 ENGINEERING, LLC
 CERTIFICATE OF AUTHORIZATION #26756

NO.	DATE	DESCRIPTION

REVISIONS

DATE

PROJECT BOUNDARY

PROPOSED SALT FENCE

SCALE IN FEET
 1" = 80'

80' 40' 0'

100'

EROSION CONTROL LEGEND

PROJECT BOUNDARY

PROPOSED SALT FENCE

INSTALLING A DISTURBED SLOPE REPAIR

ROCK MURBER QUIET STRUCTURE FOR GULCHES

TOP VIEW

FRONT VIEW

SIDE VIEW

SOIL TRACKING PREVENTION DEVICE

SOIL FENCE - BRASSER INSTALLATION

SEGMENT CONTAINMENT SYSTEM FASDIUM SURFACE SUMMER

SEGMENT CONTAINMENT SYSTEM FASDIUM SURFACE SUMMER

SEGMENT CONTAINMENT SYSTEM FASDIUM SURFACE SUMMER

SEGMENT CONTAINMENT SYSTEM FASDIUM SURFACE SUMMER

SEGMENT CONTAINMENT SYSTEM FASDIUM SURFACE SUMMER

SEGMENT CONTAINMENT SYSTEM FASDIUM SURFACE SUMMER

SEGMENT CONTAINMENT SYSTEM FASDIUM SURFACE SUMMER

SEGMENT CONTAINMENT SYSTEM FASDIUM SURFACE SUMMER

SEGMENT CONTAINMENT SYSTEM FASDIUM SURFACE SUMMER

SEGMENT CONTAINMENT SYSTEM FASDIUM SURFACE SUMMER

SEGMENT CONTAINMENT SYSTEM FASDIUM SURFACE SUMMER

SEGMENT CONTAINMENT SYSTEM FASDIUM SURFACE SUMMER

SEGMENT CONTAINMENT SYSTEM FASDIUM SURFACE SUMMER

SEGMENT CONTAINMENT SYSTEM FASDIUM SURFACE SUMMER

SEGMENT CONTAINMENT SYSTEM FASDIUM SURFACE SUMMER

SEGMENT CONTAINMENT SYSTEM FASDIUM SURFACE SUMMER

SEGMENT CONTAINMENT SYSTEM FASDIUM SURFACE SUMMER

SEGMENT CONTAINMENT SYSTEM FASDIUM SURFACE SUMMER

SEGMENT CONTAINMENT SYSTEM FASDIUM SURFACE SUMMER

SEGMENT CONTAINMENT SYSTEM FASDIUM SURFACE SUMMER

SEGMENT CONTAINMENT SYSTEM FASDIUM SURFACE SUMMER

SEGMENT CONTAINMENT SYSTEM FASDIUM SURFACE SUMMER

SEGMENT CONTAINMENT SYSTEM FASDIUM SURFACE SUMMER

SEGMENT CONTAINMENT SYSTEM FASDIUM SURFACE SUMMER

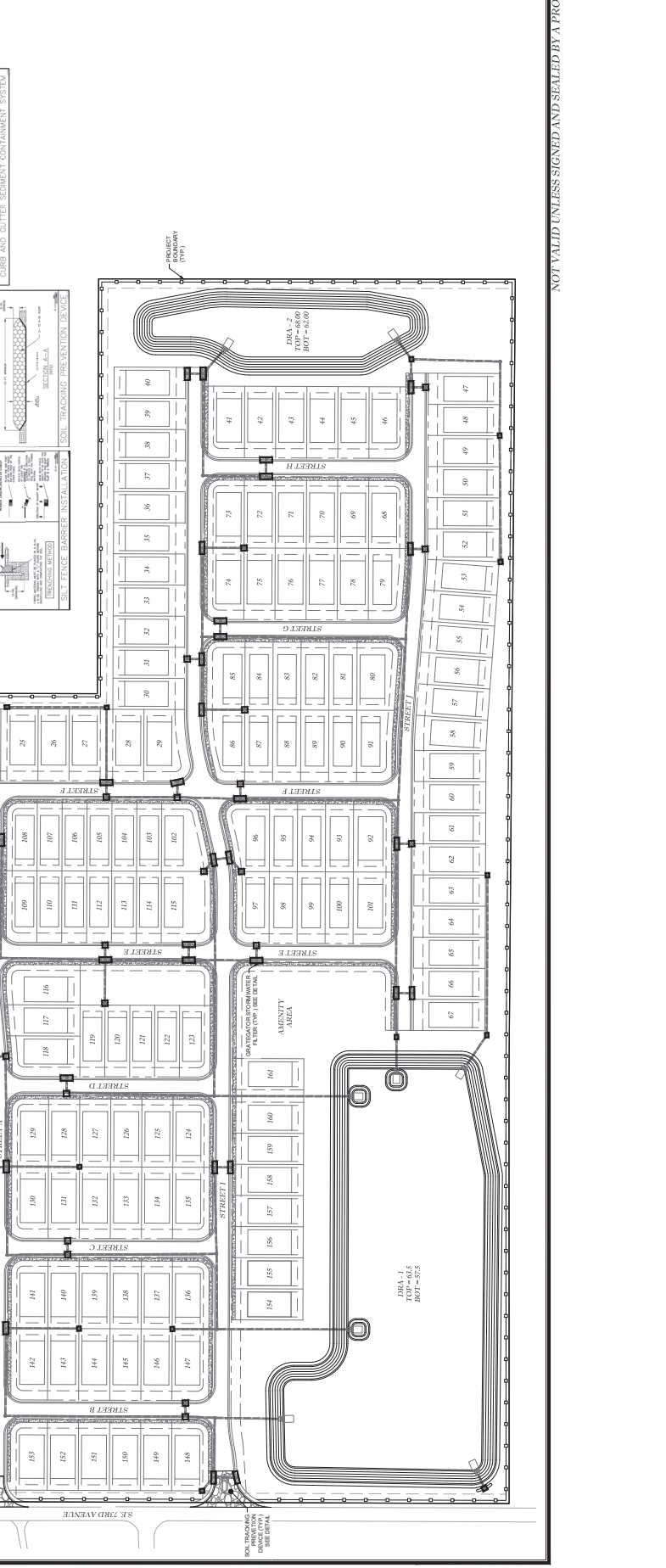
SEGMENT CONTAINMENT SYSTEM FASDIUM SURFACE SUMMER

SEGMENT CONTAINMENT SYSTEM FASDIUM SURFACE SUMMER

GENERAL NOTES:

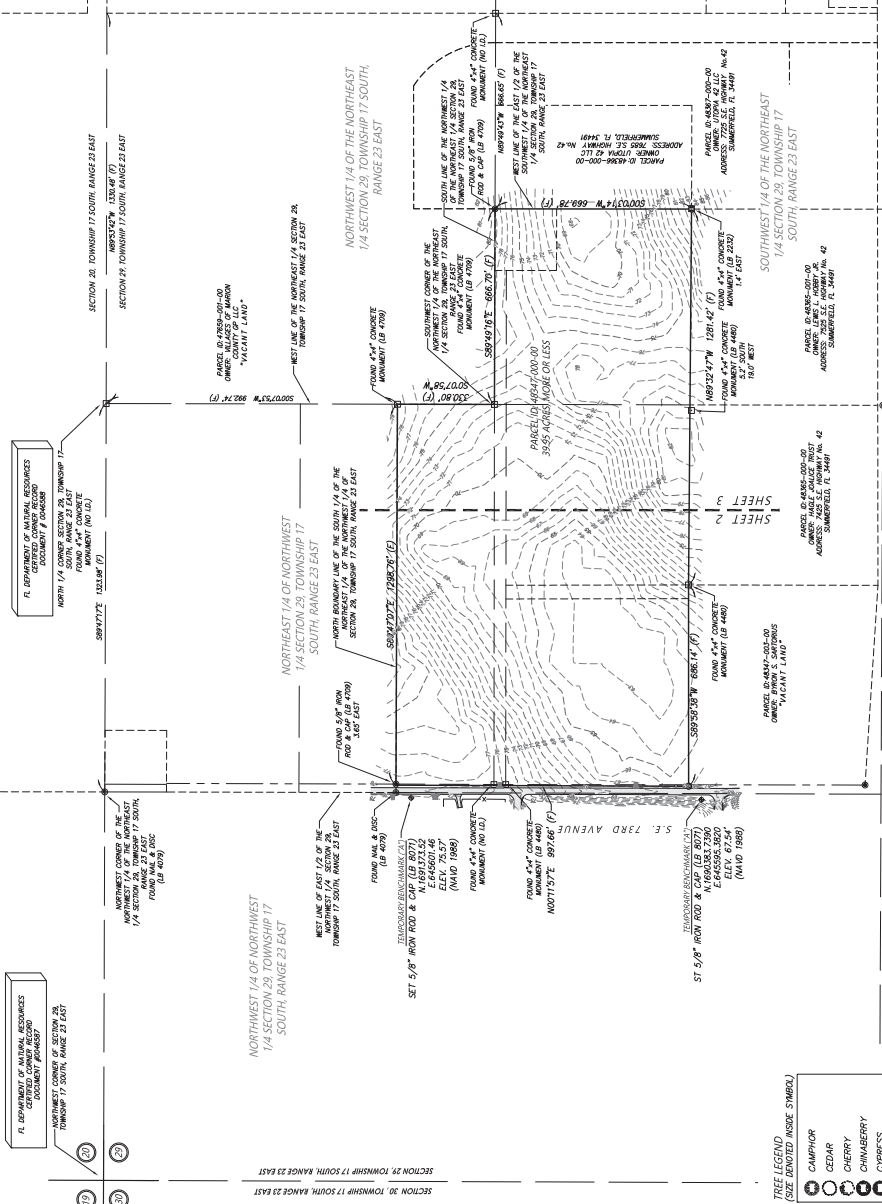
1. THE CONTRACTOR SHALL BE RESPONSIBLE FOR OBTAINING ALL NECESSARY PERMITS AND APPROVALS PRIOR TO THE START OF CONSTRUCTION.
2. EROSION CONTROL MEASURES SHALL BE INSTALLED AT THE EARLIEST PRACTICAL TIME AND MAINTAINED THROUGHOUT THE CONSTRUCTION PERIOD.
3. EROSION CONTROL MEASURES SHALL BE INSTALLED AT THE EARLIEST PRACTICAL TIME AND MAINTAINED THROUGHOUT THE CONSTRUCTION PERIOD.
4. THE CONTRACTOR SHALL BE RESPONSIBLE FOR OBTAINING ALL NECESSARY PERMITS AND APPROVALS PRIOR TO THE START OF CONSTRUCTION.
5. EROSION CONTROL MEASURES SHALL BE INSTALLED AT THE EARLIEST PRACTICAL TIME AND MAINTAINED THROUGHOUT THE CONSTRUCTION PERIOD.
6. THE CONTRACTOR SHALL BE RESPONSIBLE FOR OBTAINING ALL NECESSARY PERMITS AND APPROVALS PRIOR TO THE START OF CONSTRUCTION.
7. EROSION CONTROL MEASURES SHALL BE INSTALLED AT THE EARLIEST PRACTICAL TIME AND MAINTAINED THROUGHOUT THE CONSTRUCTION PERIOD.
8. THE CONTRACTOR SHALL BE RESPONSIBLE FOR OBTAINING ALL NECESSARY PERMITS AND APPROVALS PRIOR TO THE START OF CONSTRUCTION.
9. EROSION CONTROL MEASURES SHALL BE INSTALLED AT THE EARLIEST PRACTICAL TIME AND MAINTAINED THROUGHOUT THE CONSTRUCTION PERIOD.
10. THE CONTRACTOR SHALL BE RESPONSIBLE FOR OBTAINING ALL NECESSARY PERMITS AND APPROVALS PRIOR TO THE START OF CONSTRUCTION.
11. EROSION CONTROL MEASURES SHALL BE INSTALLED AT THE EARLIEST PRACTICAL TIME AND MAINTAINED THROUGHOUT THE CONSTRUCTION PERIOD.
12. THE CONTRACTOR SHALL BE RESPONSIBLE FOR OBTAINING ALL NECESSARY PERMITS AND APPROVALS PRIOR TO THE START OF CONSTRUCTION.
13. EROSION CONTROL MEASURES SHALL BE INSTALLED AT THE EARLIEST PRACTICAL TIME AND MAINTAINED THROUGHOUT THE CONSTRUCTION PERIOD.
14. THE CONTRACTOR SHALL BE RESPONSIBLE FOR OBTAINING ALL NECESSARY PERMITS AND APPROVALS PRIOR TO THE START OF CONSTRUCTION.
15. EROSION CONTROL MEASURES SHALL BE INSTALLED AT THE EARLIEST PRACTICAL TIME AND MAINTAINED THROUGHOUT THE CONSTRUCTION PERIOD.

ALL DISTURBED AREAS TO BE SOURED OR SEEDED AND MULCHED WITHIN 14 DAYS OF COMPLETION.



SOIL TRACKING PREVENTION DEVICES SEE DETAIL

BOUNDARY AND TOPOGRAPHIC SURVEY FOR: HERITAGE OAKS A PORTION OF SECTION 29, TOWNSHIP 17 SOUTH, RANGE 23 EAST MARION COUNTY, FLORIDA



LEGEND

EL	ELEVATION
LS	LAND SURVEYOR
MS	MARION COUNTY
OR	OFFICIAL RECORDS BOOK
CR	CENTERLINE
ARC	ARC LENGTH
ANG	ANGLE
BE	BENCH MARK
CD	CALCULATED DISTANCE
CC	COMPOUND CURVATURE
PC	POINT OF CURVATURE
PT	POINT OF TANGENCY
PL	POINT OF LONGITUDINAL INTERSECTION
PLA	POINT OF BEGINNING
PLM	POINT OF BEGINNING
PLN	POINT OF BEGINNING
PLS	POINT OF BEGINNING
PLT	POINT OF BEGINNING
PLU	POINT OF BEGINNING
PLV	POINT OF BEGINNING
PLW	POINT OF BEGINNING
PLX	POINT OF BEGINNING
PLY	POINT OF BEGINNING
PLZ	POINT OF BEGINNING
PLAA	POINT OF BEGINNING
PLAB	POINT OF BEGINNING
PLAC	POINT OF BEGINNING
PLAD	POINT OF BEGINNING
PLAE	POINT OF BEGINNING
PLAF	POINT OF BEGINNING
PLAG	POINT OF BEGINNING
PLAH	POINT OF BEGINNING
PLAI	POINT OF BEGINNING
PLAJ	POINT OF BEGINNING
PLAK	POINT OF BEGINNING
PLAL	POINT OF BEGINNING
PLAM	POINT OF BEGINNING
PLAN	POINT OF BEGINNING
PLAO	POINT OF BEGINNING
PLAP	POINT OF BEGINNING
PLAQ	POINT OF BEGINNING
PLAR	POINT OF BEGINNING
PLAS	POINT OF BEGINNING
PLAT	POINT OF BEGINNING
PLAU	POINT OF BEGINNING
PLAV	POINT OF BEGINNING
PLAW	POINT OF BEGINNING
PLAX	POINT OF BEGINNING
PLAY	POINT OF BEGINNING
PLAZ	POINT OF BEGINNING

TREE LEGEND

○	CAMPBELL
○	CEDAR
○	CHERRY
○	CHINA BERRY
○	CYPRESS
○	DOGWOOD
○	ELM
○	GUM
○	HICKORY
○	HOLLY
○	LAUREL OAK
○	LIVE OAK
○	MANGROVE
○	MAPLE
○	MIMOSA
○	MISC
○	OAK
○	PALM
○	PECAN
○	PINE TREE
○	SUGAR HACKBERRY
○	STOCKMARE

LEGAL DESCRIPTION

(PER OFFICIAL RECORDS BOOK 4777, PAGE 39)

THE NW 1/4 OF THE SW 1/4 OF THE NE 1/4, AND NE 1/4 OF THE SE 1/4 OF THE NW 1/4 OF THE NW 1/4 OF THE SW 1/4 OF THE NE 1/4, AND NE 1/4 OF THE SE 1/4 OF THE NW 1/4 OF THE NW 1/4 OF THE SW 1/4 OF THE NE 1/4, EXCEPT THE WEST 25.00 FEET, AND EXCEPT THE ROAD RIGHT OF WAY, ALL IN SECTION 29, TOWNSHIP 17 SOUTH, RANGE 23 EAST, AND EXCEPT THE NW 1/4 OF THE SW 1/4 OF THE NE 1/4 OF THE NW 1/4 OF THE SW 1/4 OF THE NE 1/4 OF SECTION 29, TOWNSHIP 17 SOUTH, RANGE 23 EAST.

(PER OFFICIAL RECORDS BOOK 2884, PAGE 1714)

THE NW 1/4 OF THE SE 1/4 OF THE NW 1/4 OF SECTION 19, TOWNSHIP 17 SOUTH, RANGE 23 EAST, MARION COUNTY, EXCEPT THE NORTH 40.00 FEET AND EXCEPT THE WEST 25.00 FEET THEREOF.

AND

THE SOUTH 622.52 FEET OF THE WEST 46.75 FEET OF THE NE 1/4 OF THE SE 1/4 OF THE NW 1/4 OF SECTION 29, TOWNSHIP 17 SOUTH, RANGE 23 EAST, MARION COUNTY, FLORIDA.

LEGAL DESCRIPTION (CONTINUE)

(PER OFFICIAL RECORDS BOOK 2486, PAGE 1829)

THE NORTH 210.00 FEET OF THE EAST 210.00 FEET OF THE NORTHWEST 1/4 OF THE SOUTHWEST 1/4 OF SECTION 29, TOWNSHIP 17 SOUTH, RANGE 23 EAST, MARION COUNTY, FLORIDA, TOGETHER WITH A NOW EXCLUSIVE EASEMENT ON AND ACROSS THE NORTH 1/4 OF THE NORTHWEST 1/4 OF SECTION 29, TOWNSHIP 17 SOUTH, RANGE 23 EAST, MARION COUNTY, FLORIDA, TOGETHER WITH A NOW EXCLUSIVE EASEMENT ON AND ACROSS THE NORTH 1/4 OF THE NORTHWEST 1/4 OF THE NORTHWEST 1/4 OF SAID SECTION 29, TOWNSHIP 17 SOUTH, RANGE 23 EAST, MARION COUNTY, FLORIDA, EXCEPT THE WEST 25.00 FEET FOR RIGHT OF WAY.

(PER OFFICIAL RECORDS BOOK 2015, PAGE 1338)

THE SW 1/4 OF THE NE 1/4 OF SECTION 28, TOWNSHIP 17 SOUTH, RANGE 23 EAST, MARION COUNTY, FLORIDA, EXCEPT THE WEST 25.00 FEET THEREOF FOR ROAD RIGHT OF WAY.

NO.	REVISIONS	BY	DATE

SCALE: 1"=200'
APPROVED: C.M.H.
CHECKED: C.M.H.
REVISED: M.A.
DATE: M.A.

JCH
CONSULTING GROUP, INC.
PLANNING, ENGINEERING, SURVEYING, AND LAND DEVELOPMENT SERVICES & MARKING

SCALE: 1"=200'

PLAT OF BOUNDARY AND TOPOGRAPHIC SURVEY -FOR- SOUTHEAST 73RD AVE LLC

FIELD BOOK/PAGE: 22-6/283
DATE: 22-9/13-17
FILE: HERITAGE OAKS
J.O.#21620
DWG.# 221820
SWIT 1 OF 3

SURVEY NOTES

- DATE OF FIELD SURVEY: NOVEMBER 15TH, 2022
- BEARINGS AND COORDINATES SHOWN HEREON ARE BASED ON THE FLORIDA ADJUSTED MEAN SEA LEVEL DATUM (FMSLD) WITH THE ADJUSTMENT AS DERIVED FROM THE FLORIDA DEPARTMENT OF TRANSPORTATION VERTICAL REFERENCE STATION DATA.
- BASED ON THE FEDERAL EMERGENCY MANAGEMENT AGENCY'S FLOOD INSURANCE RATE MAP (FIRM), COMMUNITY PANEL NO. 120030002A, EFFECTIVE DATE OF AUGUST 28, 2008, THE PROPERTY DESCRIBED HEREON LIES WITHIN FLOOD ZONE "X" AN AREA OF ANNUAL FLOOD HAZARD.
- UNDERGROUND FOUNDATIONS AND UTILITIES WERE NOT LOCATED AS PART OF THIS SURVEY.
- NORTH-SOUTH AND EAST-WEST TIES TO FOUND MONUMENTATION AND IMPROVEMENTS ARE BASED ON CARDINAL DIRECTION.
- PARTY OR PARTIES IS PROHIBITED WITHOUT WRITTEN CONSENT OF THE SURVEYING PARTY OR PARTIES.
- THIS SURVEY HAS BEEN PREPARED FOR THE EXCLUSIVE BENEFIT OF THE DATE, NOT NECESSARILY THE SIGNATURE DATE.
- UPON BY ANY OTHER INDIVIDUAL OR ENTITY WITHOUT AUTHORIZATION FROM JCH CONSULTING GROUP, INC.
- RESERVATIONS OF RECORD, PUBLIC RECORDS NOT SEARCHED BY JCH CONSULTING GROUP, INC.
- RESTRICTIONS, EASEMENTS, AND REMEDIAL RIGHTS ARE NOT LOCATED AS PART OF THIS SURVEY.
- UNDERGROUND UTILITIES SHOWN HEREON ARE BASED ON SURFACE RECORDS AND FIELD SURVEY DATA. LOCATIONS OF UNDERGROUND UTILITIES SHOWN HEREON WERE NOT VERIFIED BY JCH CONSULTING GROUP, INC.
- UNDERGROUND UTILITIES SHOWN HEREON ARE BASED ON AREA AS SPECIFIED BY CLIENT, AND FIELD LOCATIONS ARE BASED ON AREA AS SPECIFIED BY CLIENT.
- VERTICAL DATUM IS BASED ON NATIONAL GEODETIC SURVEY CONTROL POINT U TSS, ELEVATION 102.52 (NAVD 1988).

PROPERTY DATA

PARCEL ID: 48347-000-00
OWNER: SOUTHEAST 73RD AVE LLC
ADDRESS: 73RD AVE, SUMMERFIELD, FL 34487

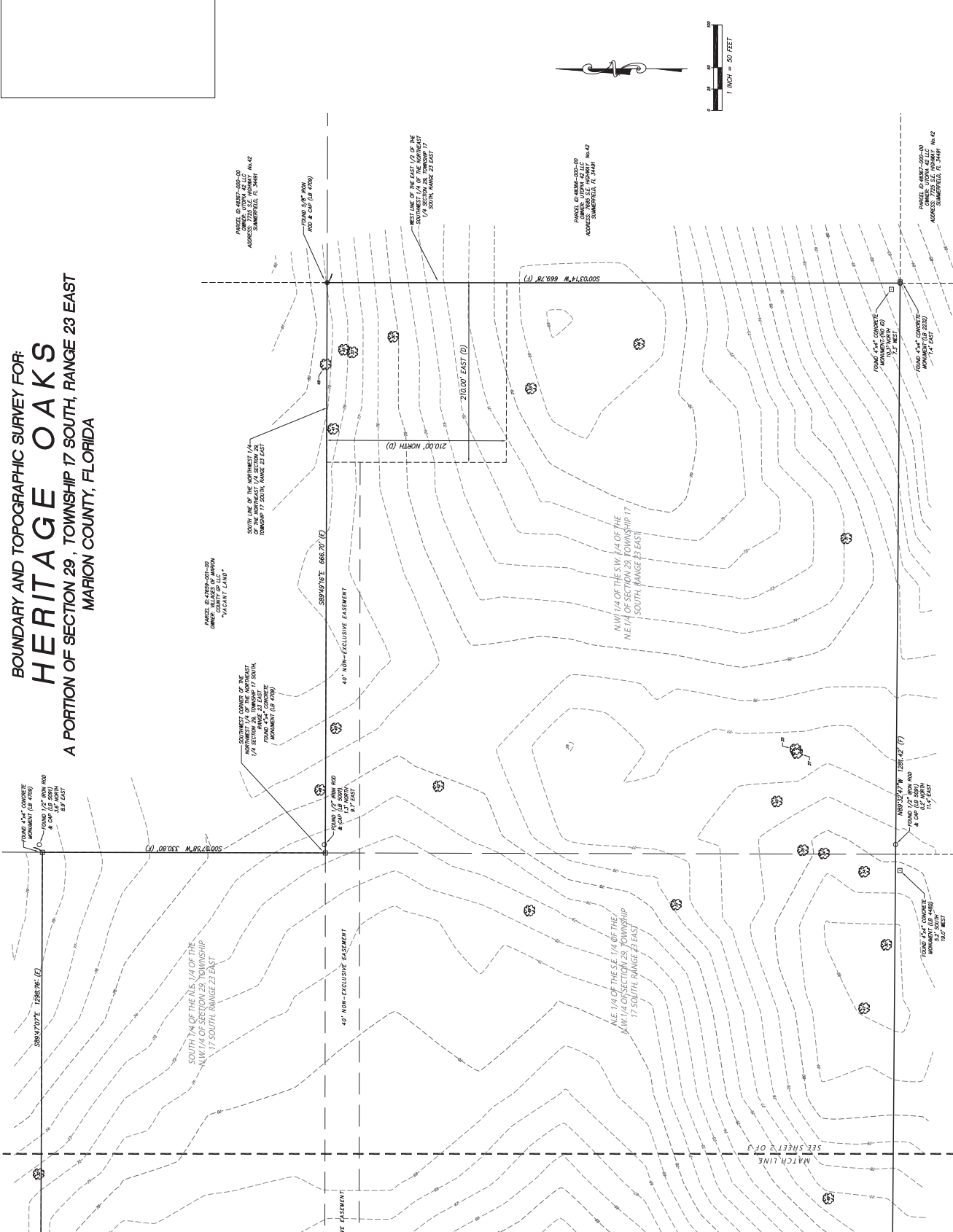
SURVEYOR'S CERTIFICATE:
I HEREBY CERTIFY THIS SURVEY MEETS THE APPLICABLE STANDARDS OF PRACTICE AS SET FORTH BY THE FLORIDA BOARD OF PROFESSIONAL SURVEYORS AND MAPPERS IN CHAPTER 501.160-1.02, PURSUANT TO SECTION 501.22, FLORIDA STATUTES.

REGISTERED PROFESSIONAL SURVEYOR & MAPPER NO. 6553
FLORIDA LICENSED SURVEYOR & MAPPER NO. 6553

THIS SURVEY IS NOT VALID WITHOUT THE SIGNATURE AND ORIGINAL BASED SEAL OF A FLORIDA LICENSED SURVEYOR AND MAPPER.

(CERTIFICATE OF AUTHORIZATION NO. LB 8077)

BOUNDARY AND TOPOGRAPHIC SURVEY FOR:
HERITAGE OAKS
 A PORTION OF SECTION 29, TOWNSHIP 17 SOUTH, RANGE 23 EAST
 MARION COUNTY, FLORIDA



NO.	REVISIONS	BY	DATE

SCALE: 1" = 50'
 DRAWN: M.A.
 REVISED:
 CHECKED: C.J.H.
 APPROVED: C.J.H.

CONSULTING GROUP, INC.
 LAND DEVELOPMENT SURVEYING & MAPPING
 1500 W. UNIVERSITY AVENUE, SUITE 100
 TAMPA, FLORIDA 33606
 PHONE: (813) 288-1111
 FAX: (813) 288-1112
 WWW: WWW.CONSULTINGGROUP.COM

PLAT OF BOUNDARY AND
 TOPOGRAPHIC SURVEY
 -FOR-
 SOUTHEAST 73RD AVE LLC

FILE: HERITAGE OAKS
 22-6/23/23
 22-9/13-17
 FIELD BOOK/PAGE:
 J.O. 221820
 DWG. J. 221820
 SHEET 3 OF 3