



PUD/RESIDENTIAL APPLICATION IMPACTS TO FIRE RESCUE SERVICES

JUNIPER LOOP

PARCEL # 36640-004-00



Attachment F

F-1

Juniper Loop



- This project is an approximate 39-acre parcel that was previously approved for a residential Planned Unit Development on 3/19/2016. The project consisted of multifamily buildings. A total of 123 units was proposed. This PUD has since expired. By code this site shall convert back to the original zoning, which in this case was A-1 (General Agriculture). Since is currently has High Residential, this would deem the zoning non-conforming. This proposed PUD consists of 151 detached single-family units. These lot sizes are minimum 40' wide with depths of 115' to 120'.

Attachment F

F-2

Common Definitions Used By Fire Rescue



- ISO- The ISO (Insurance Services Office) rating is a crucial assessment for fire departments in the United States, directly influencing both the department's operations and the community it serves.
 - The ISO's Public Protection Classification (PPC) program evaluates a fire department's ability to protect its community from fire-related incidents and assigns a rating that can affect property insurance rates for homes and businesses within the department's jurisdiction.
 - MCFR has an ISO rating of 2/2Y
- NFPA-The National Fire Protection Association (NFPA) is a global nonprofit organization devoted to eliminating death, injury, property, and economic loss due to fire, electrical, and related hazards.
 - Founded in 1896, the NFPA develops and publishes more than 300 codes and standards that are designed to minimize the risk and effects of fire and other hazards.

Attachment F

F-3

Common Definitions Used By Fire Rescue



- Response Availability – indicates how often multiple emergency calls occur at the same time within our service area. As the number of overlapping incidents increases, our ability to respond to new calls is reduced.
- This is expressed as a percentage:

Attachment F

Percentage	Service Demand
0–10% (Green)	Normal Operations – calls are handled promptly.
11–20% (Yellow)	Increased Demand – response may be delayed during busy periods.
21–30% or higher (Red)	High Demand – staffing and resources may not keep pace with call volume.

F-4

Common Definitions Used By Fire Rescue



- Workload – Workload is a critical factor in evaluating unit performance and operational demands. While it can be measured by simply counting the number of incidents a unit handles over a period, this approach doesn't reflect the complexity or duration of each call.
- A more meaningful assessment considers how often calls for service overlap, placing simultaneous demands on available units. Overlapping incidents can stretch resources thin, reduce response availability, and increase reliance on neighboring units. This measure provides a clearer view of the actual strain on personnel and apparatus, especially during periods of high call volume.
- It's important to note that workload assessments based solely on incident volume do not capture the full scope of a unit's responsibilities, such as training, equipment maintenance, pre-incident planning, and community outreach.

Attachment F

F-5

Common Standards Governing Fire Rescue



- NFPA 1061: Standard for Public Safety Telecommunications Personnel Professional Standards Qualifications
- NFPA 1201: Standard for Providing Fire and Emergency Services to the Public
- NFPA 1225, Standard for Emergency Services Communications
- NFPA 1660: Standard for Emergency, Continuity, and Crisis Management: Preparedness, Response, and Recovery
- NFPA 1620: Standard for Pre-Incident Planning
- NFPA 1710, Standard for the Organization and Deployment of Fire Suppression Operations, Emergency Medical Operations, and Special Operations to the Public by Career Fire Departments.
- NFPA 1720, Standard for the Organization and Deployment of Fire Suppression Operations, Emergency Medical Operations, and Special Operations to the Public by Volunteer Fire Departments.

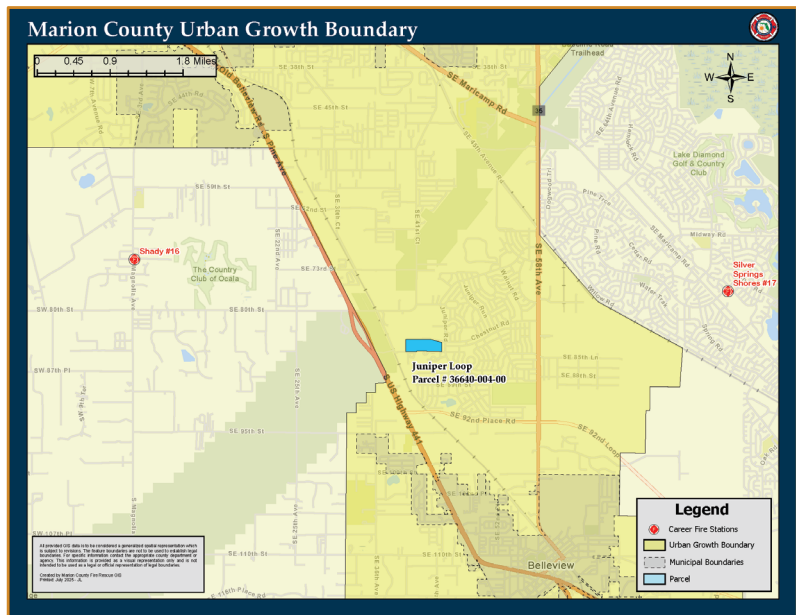
Attachment F

F-6

URBAN GROWTH BOUNDARY

THE PARCEL IS INSIDE THE URBAN GROWTH BOUNDARY.

THIS PARCEL IS IN COMMISSION DISTRICT 3



Attachment F

CLOSEST FIRE/EMS STATION LOCATIONS

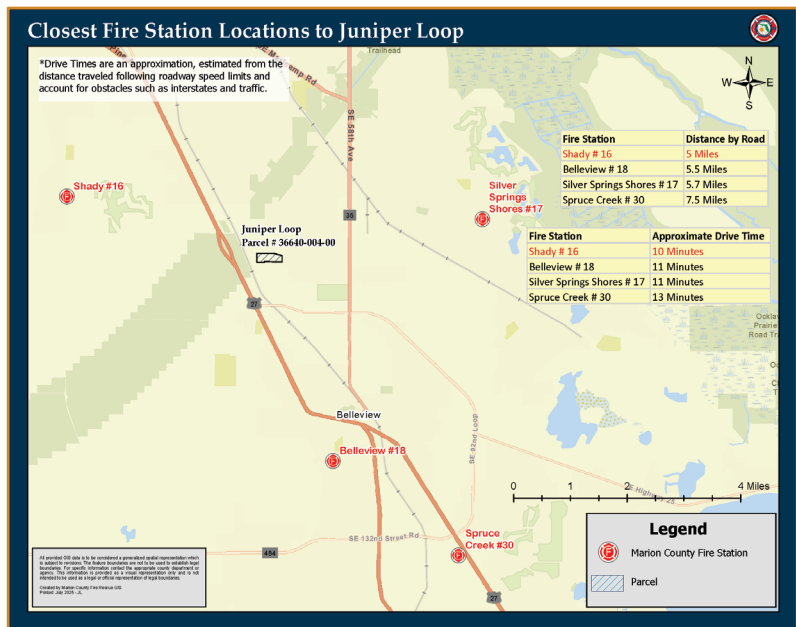
THE FOLLOWING STATIONS ARE NOT WITHIN 5 MILES OF THE PARCEL:

FIRE STATION 16, 5.0 ROAD MILES

FIRE STATION 18, 5.5 ROAD MILES

FIRE STATION 17, 5.7 ROAD MILES

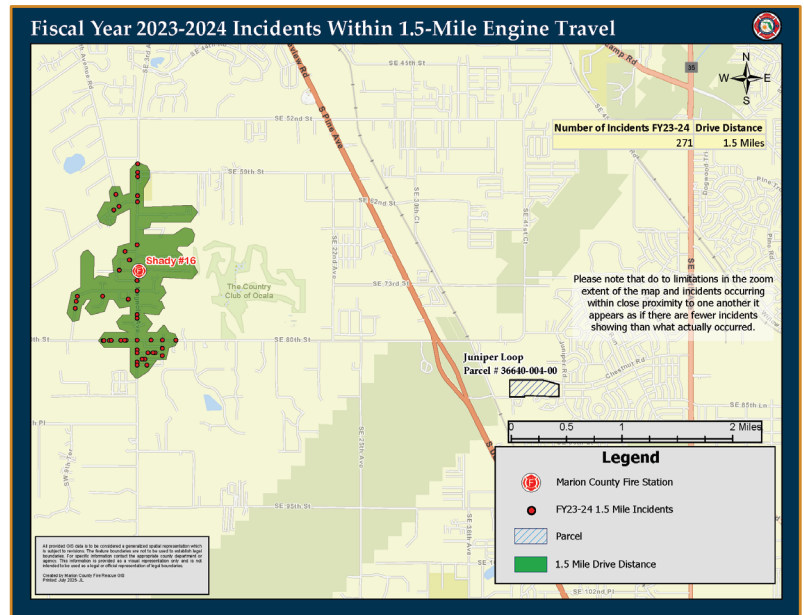
FIRE STATION 30, 7.5 ROAD MILES



Attachment F

FY23/24 INCIDENTS WITHIN 1.5-MILE ENGINE TRAVEL

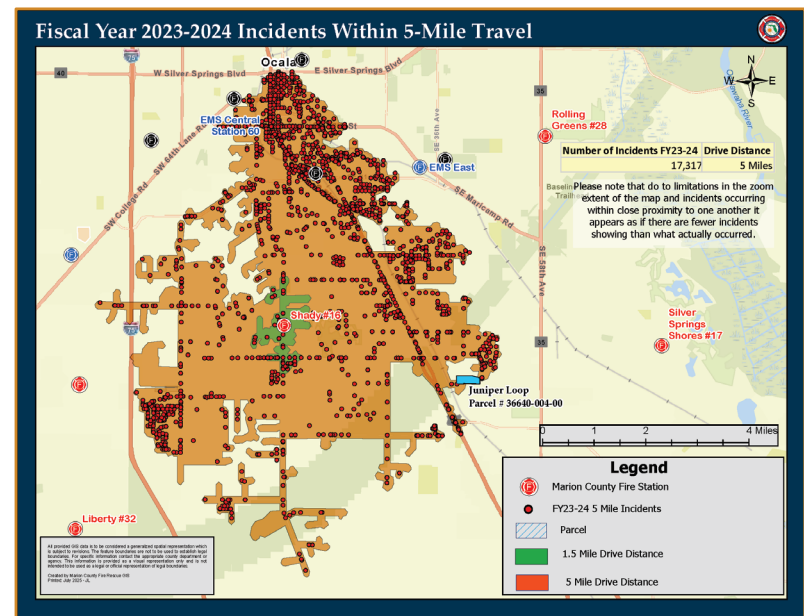
THERE WERE 271 CALLS FOR SERVICE WITHIN THE 1.5 MILE ENGINE TRAVEL FOR FIRE STATION 16.



Attachment F

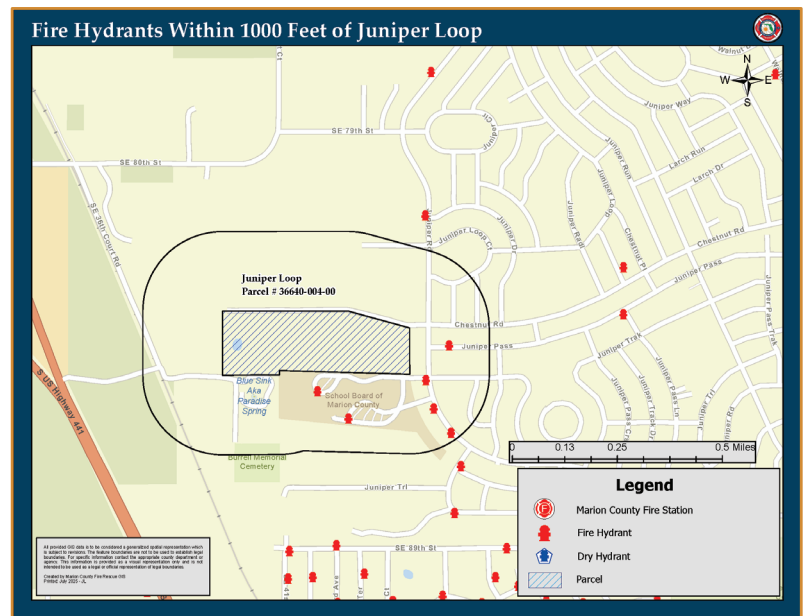
FY23/24 INCIDENTS WITHIN 5-MILE TRAVEL

THERE WERE 17,317 CALLS FOR SERVICE WITHIN THE 5 MILE TRAVEL FOR FIRE STATION 16.



Attachment F

THIS PARCEL IS WITHIN 1,000 FEET OF
6 FIRE HYDRANTS AND 0 DRY
HYDRANT.



Attachment F

Empowering Marion for Success

11

Closest Fire Suppression Response



- | | |
|--|---|
| <ul style="list-style-type: none"> Station 16 (Shady) <ul style="list-style-type: none"> 10-minute travel time Overlapping Incidents: FY23/24 suppression unit overlap rate: 0.09% – (Green) 2,101 incidents/unit (Above Trigger Point) Station 18 (Bellevue) <ul style="list-style-type: none"> 11-minute travel time Overlapping Incidents: FY23/24 suppression unit overlap rate: 6.08% – (Green) 2,072 incidents/unit (Above Trigger Point) One engine and tower assigned to Station 18. | <ul style="list-style-type: none"> Station 17 (Silver Springs Shores) <ul style="list-style-type: none"> 11-minute travel time Overlapping Incidents: FY23/24 suppression unit overlap rate: 4.72% – (Green) 2,970 incidents/unit (Above Trigger Point) Station 30 (Spruce Creek) <ul style="list-style-type: none"> 13-minute travel time Overlapping Incidents: FY23/24 suppression unit overlap rate: 6.01% – (Green) 3,257 incidents/unit (Above Trigger Point) |
|--|---|

Note: non-transport units with greater than 2,000 incidents is measure to consider adding additional resources.

Call volumes for stations with multiple units are presented as the average per unit.

Attachment F

Closest Ambulance Response

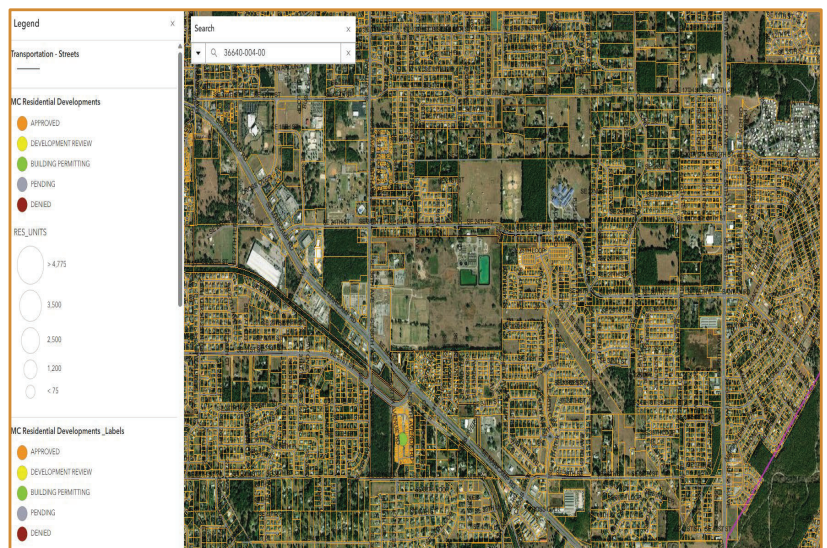
- Station 16 (Shady)
 - 10-minute travel time
 - Overlapping Incidents: FY23/24 transport unit overlap rate: 0% – (Green)
 - 1,965 incidents/unit
- Station 17 (Silver Springs Shores)
 - 11-minute travel time
 - Overlapping Incidents: FY23/24 transport unit overlap rate: 27.37% – (Red)
 - 2,983 incidents/unit (Above Trigger Point)
- Station 18 (Bellevue)
 - 11-minute travel time
 - Overlapping Incidents: FY23/24 transport unit overlap rate: 4.57% – (Green)
 - 2,748 incidents/unit – (Above Trigger Point) 2 transport units
- Station 30 (Spruce Creek)
 - 13-minute travel time
 - Overlapping Incidents: FY23/24 transport unit overlap rate: 1.69% – (Green)
 - 2,976 incidents/unit – (Above Trigger Point) 2 transport units

Note: transport units with greater than 2,500 incidents is measure to consider adding additional resources.

Call volumes for stations with multiple units are presented as the average per unit.

OTHER RESIDENTIAL DEVELOPMENTS

THERE WERE 4 OTHER DEVELOPMENTS CONSIDERING FIRE RESCUE SERVICE LEVELS IN ADDITION TO THIS REQUEST.



Current Status of Fire Rescue Service in the Area.



- An additional Transport Unit is scheduled to be added to Station 17 as part of the FY 25/26 budget cycle. This expansion is aligned with operational goals to enhance EMS coverage and improve response times in the Silver Springs Shores service area.

Attachment F

F-15

Recommendations from Fire Rescue



- If approved, additional resources are warranted to handle increased demand from the proposed parcel, as its development will impact response capacity—even outside the current 5-mile service area.
 - The transport unit from two of the four closest fire stations are above the adopted capacity limits currently and additional growth will exacerbate these numbers.
 - The suppression unit from all four closest fire stations are above the adopted capacity limits currently and additional growth will exacerbate these numbers.
 - New Transport unit is warranted
 - New Suppression unit is warranted

Attachment F

F-16

QUESTIONS?



MARION COUNTY

SHERIFF'S OFFICE

July 25, 2025

Growth Services
2710 E Silver Springs Blvd
Ocala, FL 34470

To Whom it May Concern,

The Juniper Loop development will potentially bring in 362 new residents. The Marion County Sheriff's Office could absorb the calls created by those residents alone, but if there is other development in the area, additional staffing would be necessary to cover those needs.

Sincerely,

WILLIAM WOODS, SHERIFF

By:

A handwritten signature in black ink, appearing to read "Louis Pulford", written over a horizontal line.

Major Louis Pulford
Law Enforcement Bureau

Billy Woods, Sheriff