



**FDOT Land Acquisition-117**  
**PID # 13133-002-00**  
**1,260 SQ FT Acquired by FDOT**

**Roads**

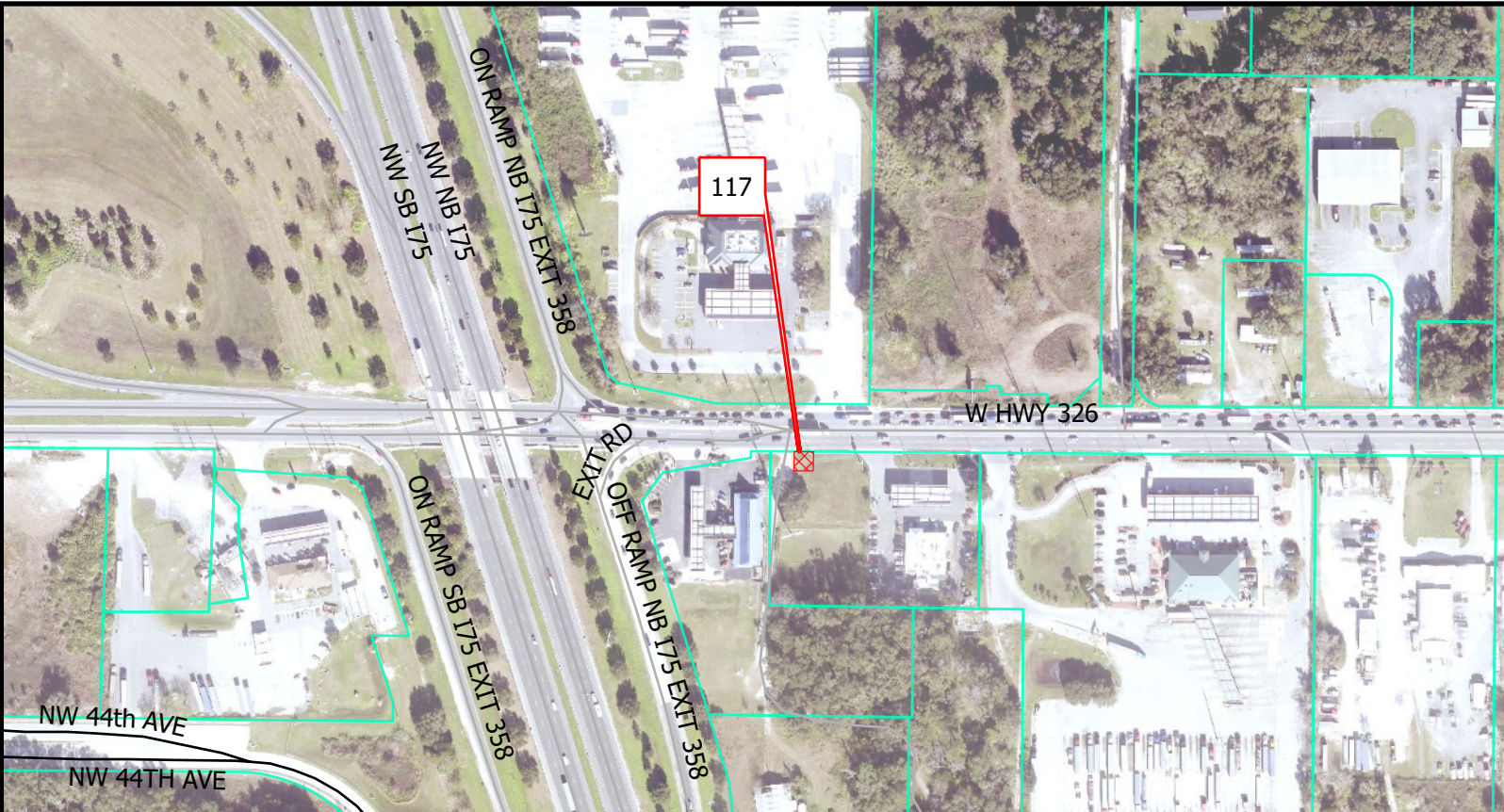
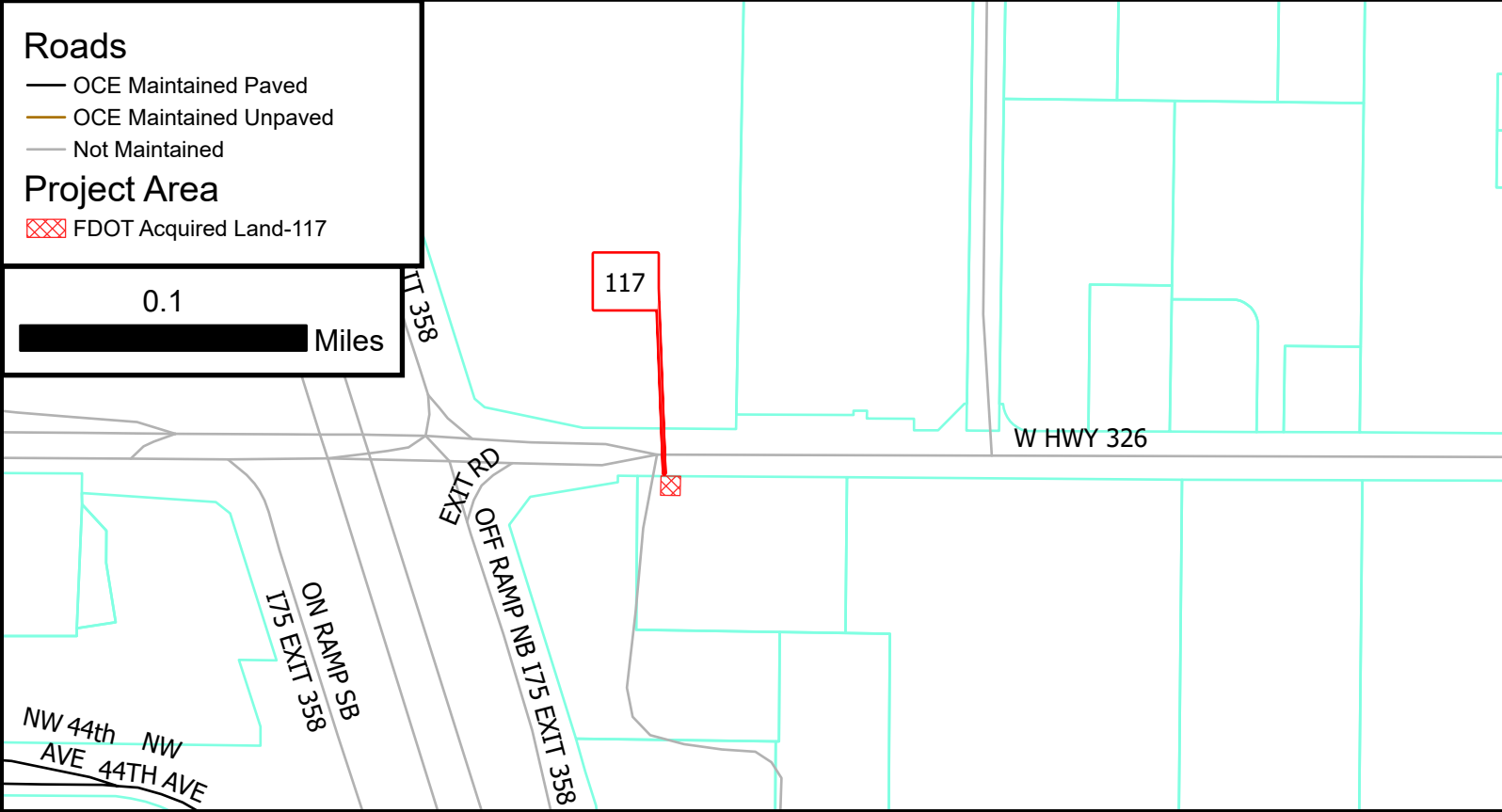
- OCE Maintained Paved
- OCE Maintained Unpaved
- Not Maintained

**Project Area**

- ⊠ FDOT Acquired Land-117

0.1

Miles



Pathway:

\\mcbcc1\dfs\GIS\_TRIClay.Gibson\PDFs

Technician: CG  
 Printed: 04/30/2026

Marion County Office of the County Engineer  
 Asset Management Section  
 412 S.E. 25th Avenue  
 Ocala, FL 34471

