



# PUD/RESIDENTIAL APPLICATION IMPACTS TO FIRE RESCUE SERVICES

AZALEAS SKILLED NURSING FACILITY/CORNER OF STATE ROAD 200 AND SW 93<sup>RD</sup> ST RD /  
PARCEL # 35695-019-03



1

## Azaleas Skilled Nursing Facility – Corner of State Road 200 and SW 93<sup>rd</sup> St Rd.



- The request is to modify a 9.47-acre parcel, adding a skilled nursing and memory care facility with 141 beds. The concept plan as provided, will be a total 103,526 sqft. It will have 50 private skilled nursing beds, 33 semiprivate rooms with 66 beds, and 1 bariatric room with 1 bed. That will be 117 beds in the SNF. The memory care unit will have 2 private rooms and 11 semiprivate rooms for a total of 24 beds.

## Common Definitions Used By Fire Rescue

- ISO- The ISO (Insurance Services Office) rating is a crucial assessment for fire departments in the United States, directly influencing both the department's operations and the community it serves.
  - The ISO's Public Protection Classification (PPC) program evaluates a fire department's ability to protect its community from fire-related incidents, and assigns a rating that can affect property insurance rates for homes and businesses within the department's jurisdiction.
  - MCFR has a ISO rating of 2/2Y
- NFPA-The National Fire Protection Association (NFPA) is a global nonprofit organization devoted to eliminating death, injury, property, and economic loss due to fire, electrical, and related hazards.
  - Founded in 1896, the NFPA develops and publishes more than 300 codes and standards that are designed to minimize the risk and effects of fire and other hazards.

## Common Definitions Used By Fire Rescue

- Resource Reliability- refers to the number of incidents occurring simultaneously within the service area.
  - As the number of simultaneous incidents increases, the ability to respond to additional calls for service decreases.
  - Displayed in percentage of occurrence.

| Level of concern for reliability | Percentage     |
|----------------------------------|----------------|
| Low                              | 0-10%          |
| Moderate                         | 11-20%         |
| High                             | 21-30% or More |

## Common Definitions Used By Fire Rescue

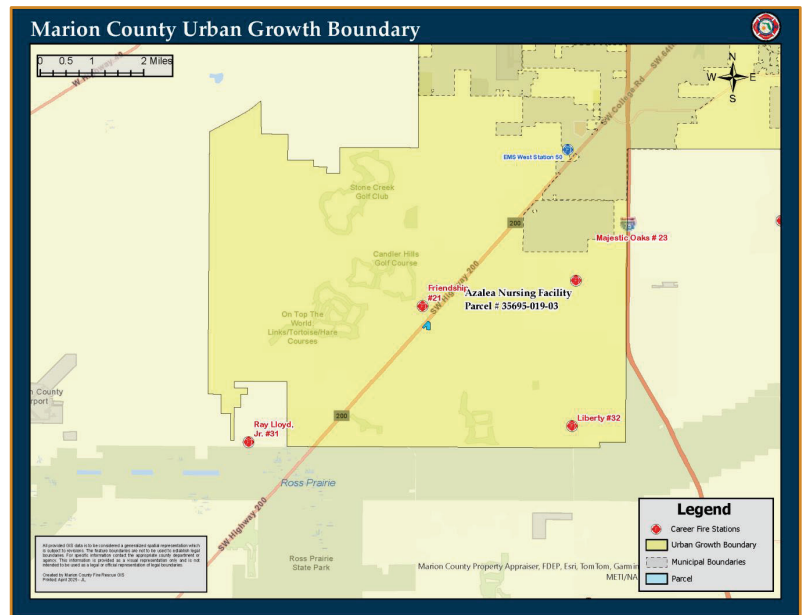
- Workload- Workload is the first factor for consideration. The measure of how much work an individual unit incurs could be as simple as a sum of incidents within a given period of time, such as a year.
  - However, incident duration can vary significantly from minutes to hours and thus this method does not provide the best measure of workload.
  - A more accurate method—while still not a perfect measure—is to consider the amount of time to which a unit is assigned and compare that to the amount of time the unit is in service, a measure referred to as unit hour utilization.
  - The imperfection of this measure is that it does not capture other on-duty activities such as training, station maintenance, apparatus maintenance, hydrant testing, hose testing, pre-incident planning, public education events, etc.

## Common Standards Governing Fire Rescue

- NFPA 1061: Standard for Public Safety Telecommunications Personnel Professional Standards Qualifications
- NFPA 1201: Standard for Providing Fire and Emergency Services to the Public
- NFPA 1225, Standard for Emergency Services Communications
- NFPA 1660: Standard for Emergency, Continuity, and Crisis Management: Preparedness, Response, and Recovery
- NFPA 1620: Standard for Pre-Incident Planning
- NFPA 1710, Standard for the Organization and Deployment of Fire Suppression Operations, Emergency Medical Operations, and Special Operations to the Public by Career Fire Departments.
- NFPA 1720, Standard for the Organization and Deployment of Fire Suppression Operations, Emergency Medical Operations, and Special Operations to the Public by Volunteer Fire Departments.

# URBAN GROWTH BOUNDARY

THE PARCEL IS INSIDE THE URBAN GROWTH BOUNDARY. THESE PARCELS ARE IN COMMISSION DISTRICT 2.



Empowering Marion for Success

7

7

# CLOSEST FIRE STATION LOCATIONS

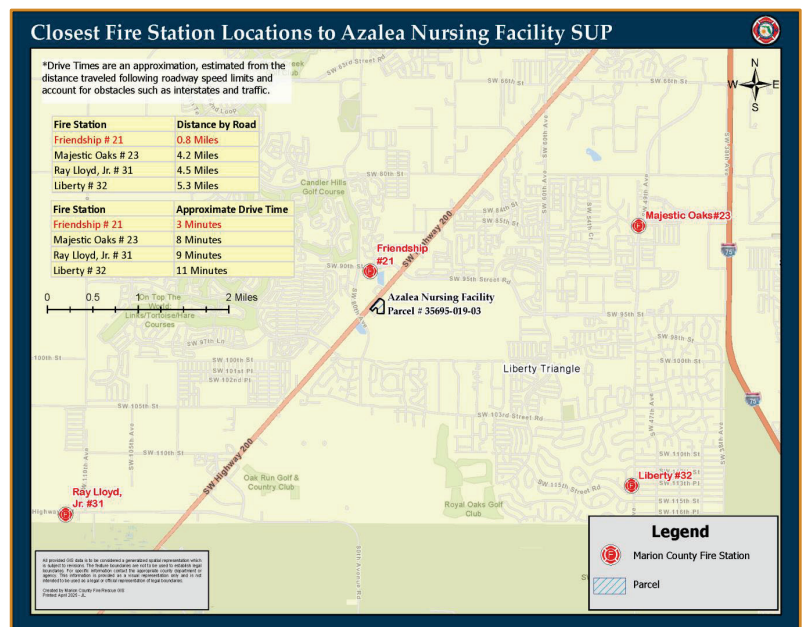
THE FOLLOWING FIRE STATIONS ARE LOCATED NEAR THE PARCEL FOR CONSIDERATION:

FIRE STATION 21, 0.8 ROAD MILES

FIRE STATION 23, 4.3 ROAD MILES

FIRE STATION 31, 4.5 ROAD MILES

FIRE STATION 12, 5.3 ROAD MILES



Empowering Marion for Success

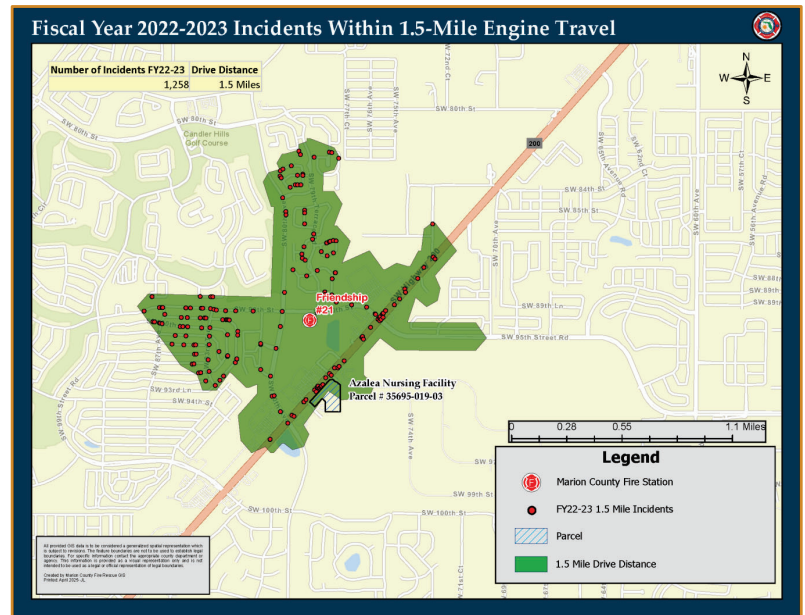
8

8



## FY22/23 INCIDENTS WITHIN 1.5-MILE ENGINE TRAVEL

THERE WERE 1,258 CALLS FOR SERVICE WITHIN THE 1.5 MILE ENGINE TRAVEL FOR FIRE STATION 21.



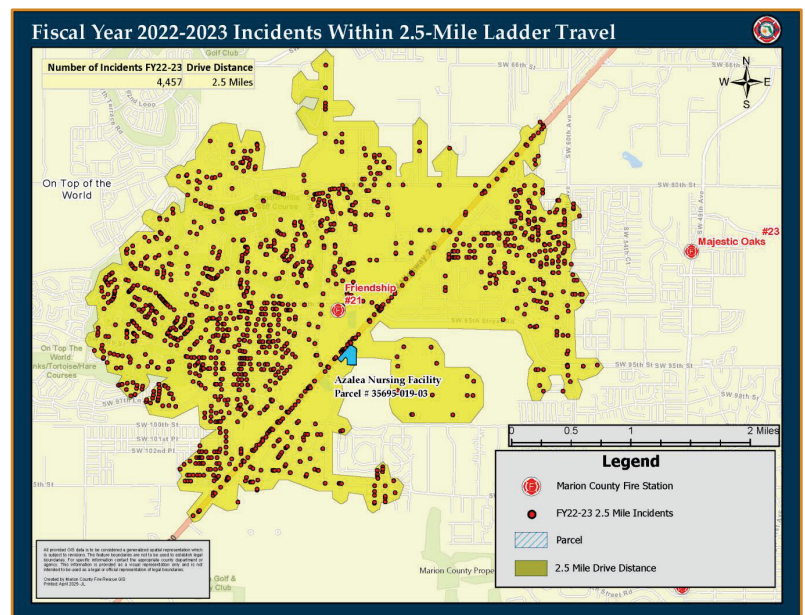
Empowering Marion for Success

9

9

## FY 22/23 INCIDENTS WITHIN 2.5-MILE LADDER TRAVEL

THERE WERE 4,457 CALLS FOR SERVICE WITHIN THE 2.5 MILE LADDER TRAVEL FOR FIRE STATION 21.



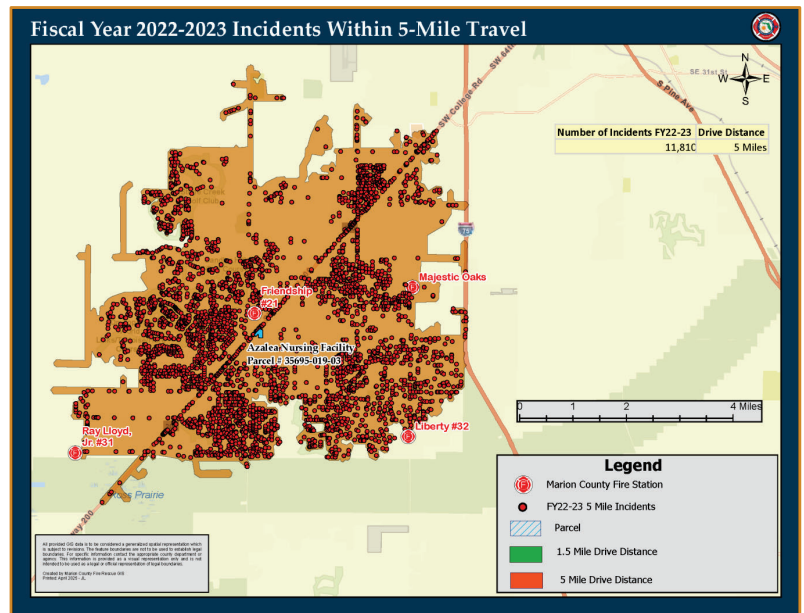
Empowering Marion for Success

10

10

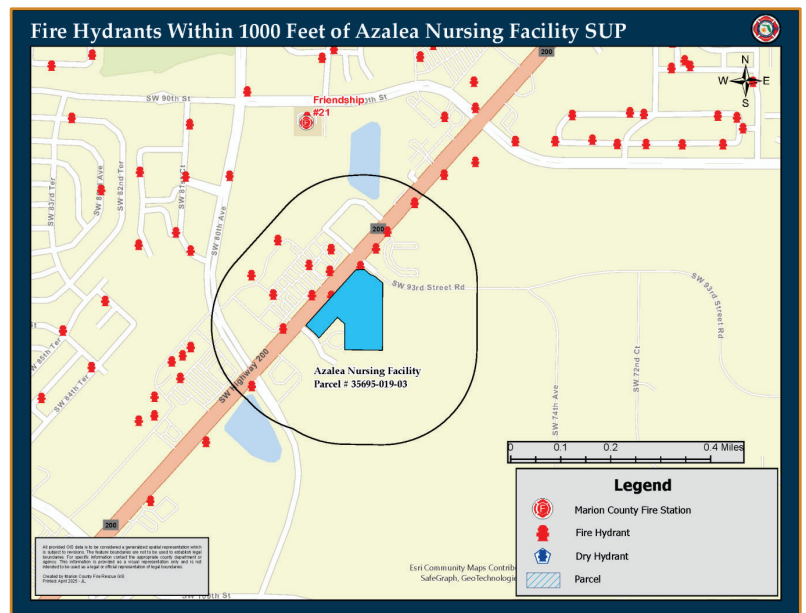
## FY22/23 INCIDENTS WITHIN 5-MILE TRAVEL

THERE WERE 11,810 CALLS FOR SERVICE WITHIN THE 5 MILE TRAVEL FOR FIRE STATION 21.



## FIRE HYDRANTS WITHIN 1000 FEET

THIS PARCEL IS WITHIN 1,000 FEET OF 13 FIRE HYDRANTS AND 0 DRY HYDRANT.



## Closest Fire Suppression Response

- Station 21 (Friendship)
  - 3-minute travel time
  - Low incident reliability concern per non-transport unit at 7.03% in FY22/23
  - 2,319 incidents/unit (Above Trigger Point)
- Station 23 (Majestic Oaks)
  - 8-minute travel time
  - Low incident reliability concern per non-transport unit at 7.3% in FY22/23
  - 1,331 incidents/unit
- Station 31 (Ray Lloyd, Jr.)
  - 9-minute travel time
  - Low incident reliability concern per non-transport unit at 0.6% in FY22/23
  - 1,293 incidents/unit
- Station 32 (Liberty)
  - 11-minute travel time
  - Low incident reliability concern per non-transport unit at 6.46% in FY22/23
  - 1,555 incidents/unit

*Note: non-transport units with greater than 2,000 incidents is measure to consider adding additional resources.*

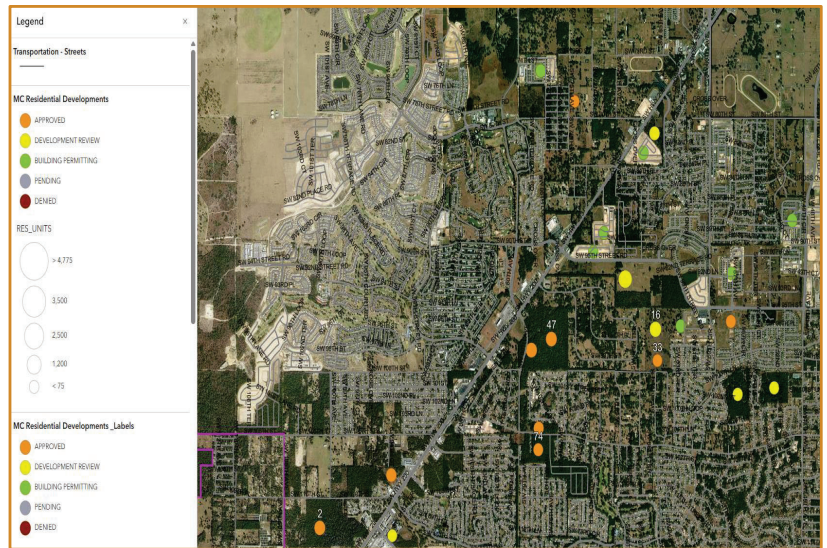
## Closest Ambulance Response

- Station 21 (Friendship)
  - 3-minute travel time
  - High incident reliability concern per non-transport unit at 30.43% in FY22/23
  - 3,963 incidents/unit (Above Trigger Point)
- Station 31 (Ray Lloyd, Jr.)
  - 9-minute travel time
  - High incident reliability concern per non-transport unit at 23.47% in FY22/23
  - 2,926 incidents/unit (Above Trigger Point)
- Station 32 (Liberty)
  - 11-minute travel time
  - Moderate incident reliability concern per non-transport unit at 15.64% in FY23/24
  - 1,726 incidents/unit

*Note: transport units with greater than 2,500 incidents is measure to consider adding additional resources.*

## OTHER RESIDENTIAL DEVELOPMENTS

THERE WERE 22 OTHER DEVELOPMENTS CONSIDERING FIRE RESCUE SERVICE LEVELS IN ADDITION TO THIS REQUEST.



## Current Status of Fire Rescue Service in the Area.



- There are no additional budgeted units for this area to date.



## Recommendations from Fire Rescue



- If approved, additional resources are warranted to handle increased demand from the proposed parcel.
- The transport units from two of the four closest fire stations are above the adopted capacity limits currently and additional growth will exacerbate these numbers.
- Additional Transport Unit is warranted.



## QUESTIONS?