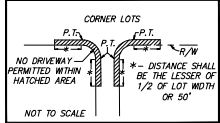
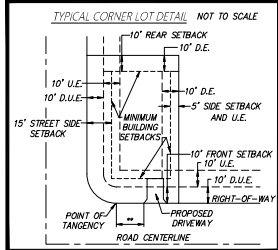
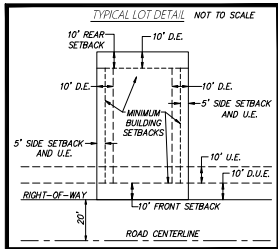
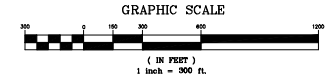




IRONCREST PHASE 1

(A PLANNED UNIT DEVELOPMENT)

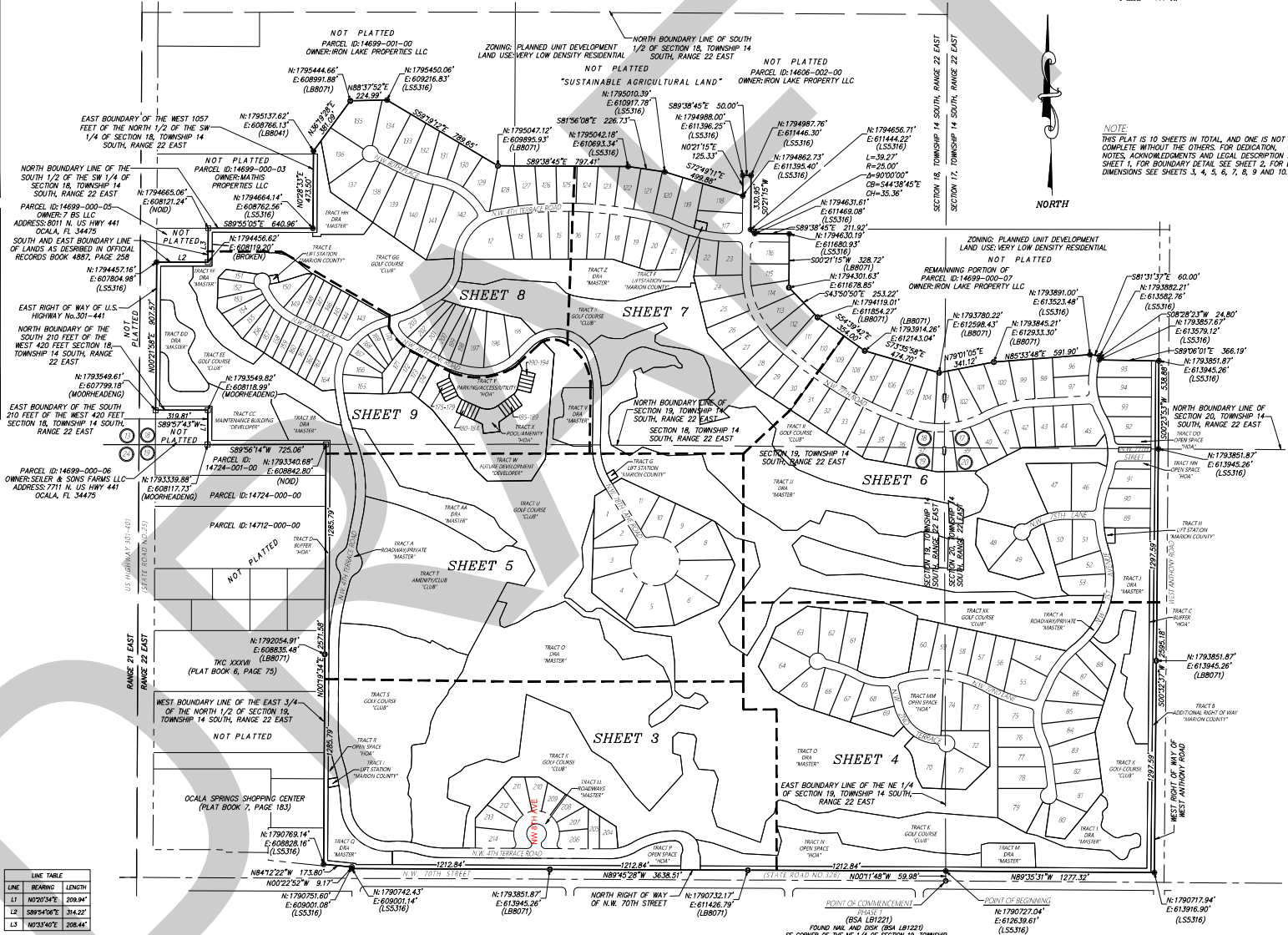
A REPLAT OF A PORTION OF ALDERMAN ESTATE, PLAT BOOK A, PAGE 122, PUBLIC RECORDS OF MARION COUNTY, FLORIDA A PORTION OF SECTION 17, 18, 19 AND 20, TOWNSHIP 14 SOUTH, RANGE 22 EAST
MARION COUNTY, FLORIDA



- LEGEND** UNLESS OTHERWISE NOTED
- = NOT TO SCALE
 - R = RADIUS
 - L = ARC LENGTH
 - Δ = DELTA (CENTRAL ANGLE)
 - CH = CHORD DISTANCE
 - CB = CHORD BEARING
 - NO. = NUMBER
 - N. = NORTHING (STATE PLANE COORDINATES)
 - E. = EASTING
 - E. = CENTERLINE OF RIGHT OF WAY
 - O.R.B. = OFFICIAL RECORDS BOOK OF MARION COUNTY
 - D.R.A. = DRAINAGE RETENTION AREA
 - LB = LICENSE BUSINESS
 - LS = LAND SURVEYOR
 - PLS = PROFESSIONAL LAND SURVEYOR
 - PG. = PAGE
 - P.B. = PLAT BOOK
 - P.T. = POINT OF TANGENCY
 - D.A.U.E. = DRAINAGE, ACCESS, AND UTILITY EASEMENT
 - D.U.E. = DRAINAGE AND UTILITY EASEMENT
 - A.E. = ACCESS EASEMENT
 - D.E. = DRAINAGE EASEMENT
 - U.E. = UTILITY EASEMENT
 - AC. = ACRES
 - (NR) = NOT RADIAL
 - (X.XXX) = SQUARE FOOTAGE AREA
 - = PERMANENT REFERENCE MONUMENT (P.R.M.) FOUND 4" x 4" CONCRETE MONUMENT (AS NOTED)
 - = PERMANENT REFERENCE MONUMENT (P.R.M.) FOUND 5/8" IRON ROD & DISK (AS NOTED)
 - = PERMANENT CONTROL POINT (P.C.P.) SET NAIL & DISK (LB 8071)
 - = PERMANENT REFERENCE MONUMENT (P.R.M.) SET 5/8" IRON ROD & DISK (LB 8071)
 - = PERMANENT CONTROL POINT (P.C.P.) FOUND NAIL & DISK (AS NOTED)

LINE TABLE

LINE	BEARING	LENGTH
L1	N20°34'E	209.94'
L2	S89°49'E	314.22'
L3	N0°34'0"E	208.44'



NOTE:
THIS PLAT IS 10 SHEETS IN TOTAL AND ONE IS NOT COMPLETE WITHOUT THE OTHERS. FOR DEDICATION, NOTES, ACKNOWLEDGMENTS AND LEGAL DESCRIPTION SEE SHEET 1, FOR BOUNDARY DETAIL SEE SHEET 2, FOR LOT DIMENSIONS SEE SHEETS 3, 4, 5, 6, 7, 8, 9 AND 10.



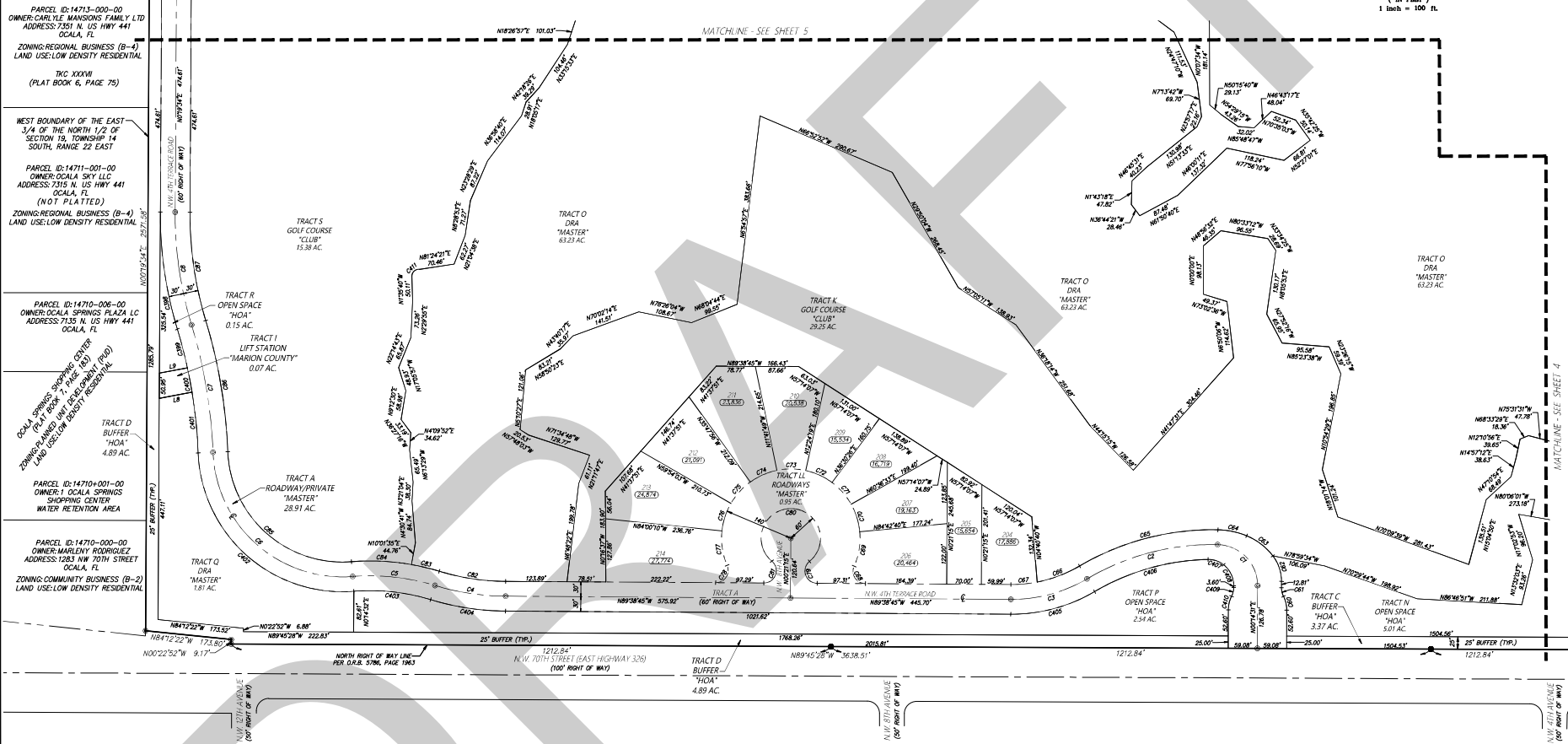
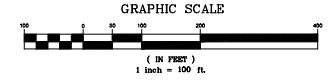
JCH
CONSULTING GROUP, INC.
LAND DEVELOPMENT SURVEYING & MAPPING
PLANNING - ENVIRONMENTAL - GIS
CREATING THE FUTURE WITH PRECISION
CHRISTOPHER HOBSON P.S.M., C.E.M., L.S. 14343
60 N.W. 17TH AVENUE, OCALA, FLORIDA 34471
PHONE: 352.485.1482 www.jchmg.com

IRONCREST PHASE 1

(A PLANNED UNIT DEVELOPMENT)

PLAT BOOK _____, PAGE _____
SHEET 3 OF 10

A REPLAT OF A PORTION OF ALDERMAN ESTATE, PLAT BOOK A, PAGE 122, PUBLIC RECORDS OF MARION COUNTY, FLORIDA A PORTION OF SECTION 17, 18, 19 AND 20, TOWNSHIP 14 SOUTH, RANGE 22 EAST MARION COUNTY, FLORIDA



LEGEND UNLESS OTHERWISE NOTED

- /- = NOT TO SCALE
- R = RADIUS
- L = ARC LENGTH
- Δ = DELTA (CENTRAL ANGLE)
- CH = CHORD DISTANCE
- CB = CHORD BEARING
- NO. = NUMBER
- N. = NORTHING (STATE PLANE COORDINATES)
- E. = EASTING
- = CENTERLINE OF RIGHT OF WAY
- = OFFICIAL RECORDS BOOK OF MARION COUNTY
- D.R.A. = DRAINAGE EASEMENT AREA
- LB = LICENSE BUSINESS
- LS = LAND SURVEYOR
- P.L.S. = PROFESSIONAL LAND SURVEYOR
- P.G. = PAGE
- P.B. = PLAT BOOK
- P.T. = POINT OF TANGENCY
- D.A.U.E. = DRAINAGE, ACCESS, AND UTILITY EASEMENT

D.U.E. = DRAINAGE AND UTILITY EASEMENT
A.E. = ACCESS EASEMENT
D.E. = DRAINAGE EASEMENT
U.E. = UTILITY EASEMENT
AC. = ACRES
(NR) = NOT RADIAL
(S.F.) = SQUARE FOOTAGE AREA

□ = PERMANENT REFERENCE MONUMENT (P.R.M.)
FOUND 4" X 4" CONCRETE MONUMENT (AS NOTED)

⊙ = PERMANENT REFERENCE MONUMENT (P.R.M.)
FOUND 5/8 IRON ROD & DISK (AS NOTED)

⊙ = PERMANENT CONTROL POINT (P.C.P.)
SET NAIL & DISK (LB 807)

⊙ = PERMANENT REFERENCE MONUMENT (P.R.M.)
SET 5/8 IRON ROD & DISK (LB 807)

⊙ = PERMANENT CONTROL POINT (P.C.P.)
FOUND NAIL & DISK (AS NOTED)

CURVE TABLE				CURVE TABLE				CURVE TABLE				CURVE TABLE				CURVE TABLE														
CURVE	LENGTH	RADIUS	CHORD	BEARING	CURVE	LENGTH	RADIUS	CHORD	BEARING	CURVE	LENGTH	RADIUS	CHORD	BEARING	CURVE	LENGTH	RADIUS	CHORD	BEARING											
C1	138.24	82.50	889.613	115.71	N44°17'31"W	C6	59.65	161.00	021°13'42"	59.31	N78°24'44"W	C16	58.89	140.00	024°06'30"	58.46	N18°02'53"E	C38	238.75	800.00	01°17'07"S	238.86	N08°15'34"W	C40	28.54	61.00	02°48'39"	28.28	N13°38'50"E	
C2	276.38	500.00	031°40'19"	272.87	N75°20'20"E	C5	292.96	530.00	031°40'19"	289.25	N75°20'20"E	C7	71.22	140.00	028°08'54"	70.46	N08°24'37"W	C39	81.03	1000.00	004°38'53"	81.00	N43°12'22"W	C41	24.15	14.00	038°51'18"	21.27	N47°49'59"E	
C3	161.53	300.00	030°51'52"	159.59	N74°35'44"E	C6	92.07	270.00	018°32'20"	91.63	N69°26'23"E	C7	49.53	25.00	11°37'07"	48.82	N33°38'30"E	C40	50.01	1000.00	002°51'54"	50.00	N10°46'12"W	C42	470.13	292.00	092°43'55"	420.97	N48°23'02"W	
C4	144.84	500.00	016°35'51"	144.34	N81°20'44"W	C6	53.31	270.00	011°18'42"	53.22	N84°44'34"E	C7	61.33	25.00	14°03'03"	47.07	N19°22'14"W	C41	123.53	1000.00	007°04'40"	123.45	N05°49'54"W	C43	157.31	420.00	021°07'35"	156.39	N83°46'41"W	
C5	168.54	450.00	021°19'25"	167.56	N83°46'41"W	C6	49.53	25.00	11°37'07"	48.82	N32°53'20"W	C6	294.37	60.00	281°06'26"	76.25	N89°28'45"W	C42	470.13	292.00	092°43'55"	420.97	N48°23'02"W	C44	157.31	420.00	021°07'35"	156.39	N83°46'41"W	
C6	421.85	262.00	099°14'55"	377.72	N48°23'02"W	C6	71.22	140.00	028°08'54"	70.46	N09°19'07"E	C6	61.33	25.00	14°03'03"	47.07	N20°54'47"E	C43	157.31	420.00	021°07'35"	156.39	N83°46'41"W	C45	173.69	330.00	020°07'07"	176.55	N1°55'24"E	
C7	262.25	1000.00	014°35'50"	261.49	N09°15'07"W	C7	58.89	140.00	024°06'30"	58.46	N17°02'44"W	C6	136.15	470.00	016°35'51"	135.68	N81°20'44"W	C44	157.31	420.00	021°07'35"	156.39	N83°46'41"W	C46	173.69	330.00	020°07'07"	176.55	N1°55'24"E	
C8	235.16	770.00	01°17'15"	233.80	N01°15'14"W	C7	58.89	140.00	024°06'30"	58.46	N44°02'49"W	C6	58.89	480.00	008°50'57"	57.98	N16°02'09"W	C45	173.69	330.00	020°07'07"	176.55	N1°55'24"E	C47	241.05	470.00	023°03'08"	238.47	N37°11'17"E	
C9	28.24	61.00	028°48'39"	28.28	N13°38'50"E	C7	58.89	140.00	024°06'30"	58.46	N45°13'38"W	C6	121.70	480.00	014°23'24"	121.41	N47°14'37"W	C46	241.05	470.00	023°03'08"	238.47	N37°11'17"E	C48	33.98	48.00	039°43'58"	33.30	N17°14'44"W	
C10	18.25	39.00	038°48'39"	18.08	N18°39'54"W	C7	58.89	140.00	024°06'30"	58.46	N48°34'38"W	C6	375.53	232.00	082°14'52"	334.47	N48°23'02"W	C47	33.98	48.00	039°43'58"	33.30	N17°14'44"W	C49	48.60	54.00	051°37'11"	47.07	N25°34'05"W	
C11	55.44	84.00	037°48'54"	54.44	N18°39'54"W	C7	58.89	140.00	024°06'30"	58.46	N46°15'58"W	C6	269.84	1000.00	04°15'08"	269.11	N09°15'07"W	C48	48.60	54.00	051°37'11"	47.07	N25°34'05"W	C50	18.25	39.00	048°48'39"	18.08	N13°38'50"E	
C12	67.60	129.00	030°01'27"	66.83	N52°35'07"W	C7	58.89	140.00	024°06'30"	58.46	N47°09'21"E	C6	221.77	740.00	01°17'15"	220.94	N08°15'34"W	C49	18.25	39.00	048°48'39"	18.08	N13°38'50"E							

NOTE
THIS PLAT IS 10 SHEETS IN TOTAL, AND ONE IS NOT COMPLETE WITHOUT THE OTHERS. FOR DEDICATION, NOTES, ACKNOWLEDGMENTS AND LEGAL DESCRIPTION SEE SHEET 1. FOR BOUNDARY DETAIL SEE SHEET 2. FOR LOT DIMENSIONS SEE SHEETS 3, 4, 5, 6, 7, 8 AND 10.

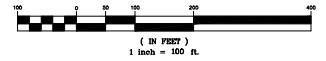
PREPARED BY: JCH CONSULTING GROUP, INC., 426 SW 15TH STREET, OCALA, FLORIDA 34471

IRONCREST PHASE 1

(A PLANNED UNIT DEVELOPMENT)

PLAT BOOK , PAGE
SHEET 4 OF 10

GRAPHIC SCALE



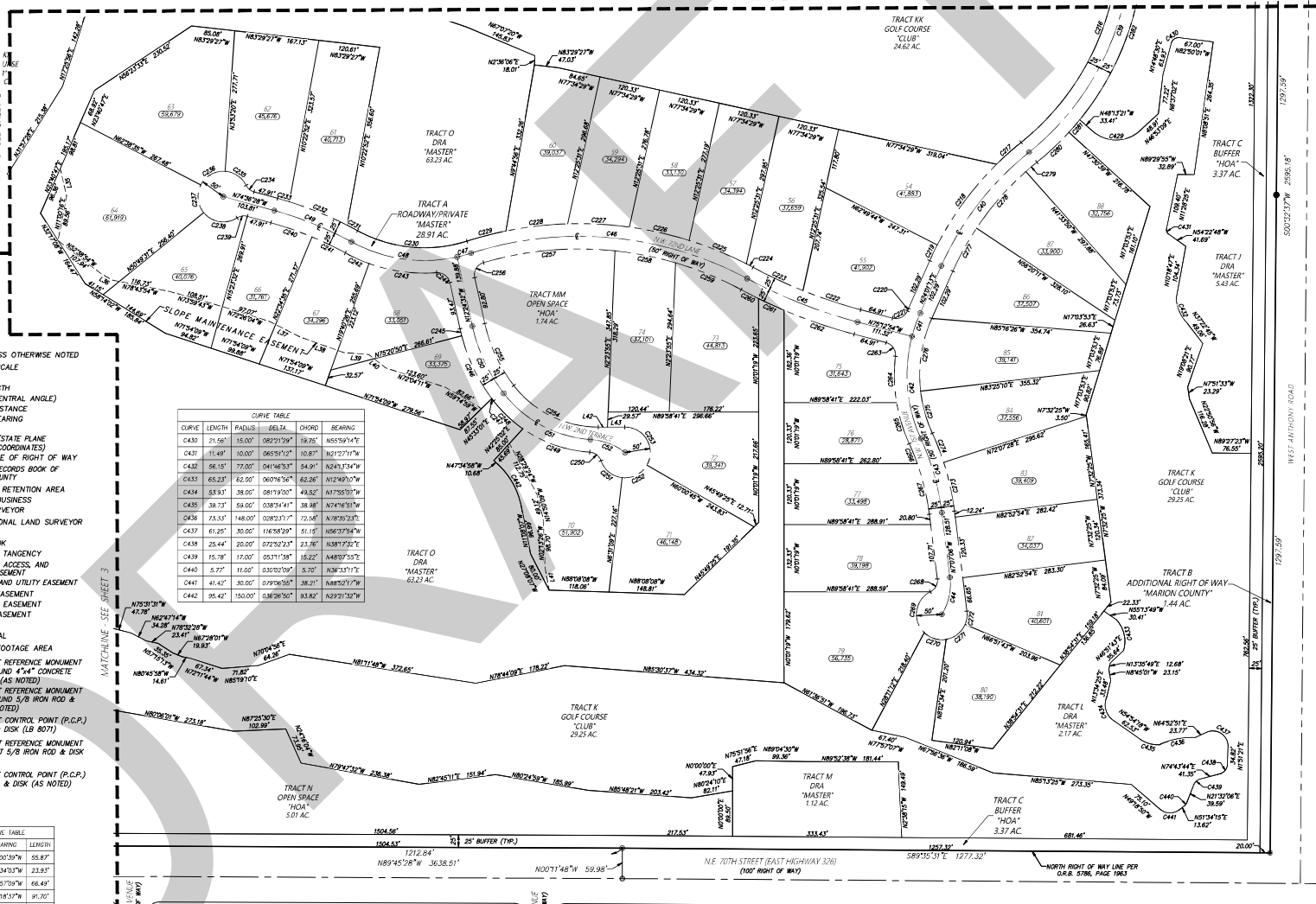
A REPLAT OF A PORTION OF ALDERMAN ESTATE, PLAT BOOK A, PAGE 122, PUBLIC RECORDS OF MARION COUNTY, FLORIDA A PORTION OF SECTION 17, 18, 19 AND 20, TOWNSHIP 14 SOUTH, RANGE 22 EAST MARION COUNTY, FLORIDA

MATCHLINE - SEE SHEET 6

CURVE	LENGTH	RADIUS	DELTA	CHORD	BEARING
C09	655.861	533.007	69.9571°	615.383	N13°29'54"E
C10	285.107	430.007	37.7158°	283.017	N13°29'54"E
C11	48.367	300.007	9.09110°	48.307	N10°24'0"E
C12	206.207	300.007	49.9224°	202.117	N04°54'0"W
C13	152.537	500.007	17.7284°	151.943	N15°01'30"W
C14	76.467	112.507	33.8561°	75.007	N12°21'0"E
C15	234.447	1000.007	13.9252°	233.007	N8°29'50"W
C16	561.657	700.007	44.5878°	546.707	N8°46'30"W
C17	27.997	300.007	0.92043°	27.987	N74°55'0"E
C18	215.107	300.007	44.1545°	210.537	N81°52'10"W
C19	164.737	711.007	13.1364°	164.427	N67°58'30"W
C20	147.207	335.007	25.7031°	146.027	N24°59'48"W
C21	200.017	235.007	48.4531°	194.037	N61°57'59"W
C22	73.437	124.017	33.9573°	72.367	N62°23'0"W
C23	353.837	512.007	39.9345°	346.837	N37°30'15"E
C24	64.807	425.007	8.95624°	64.777	N48°49'30"E
C25	108.447	425.007	15.8115°	109.017	N38°16'0"E
C26	34.377	425.007	4.70703°	34.337	N32°58'45"E
C27	5.807	335.007	0.91119°	5.807	N21°30'34"E
C28	35.697	25.007	88.4773°	32.737	N61°31'30"E
C29	119.927	975.007	7.07249°	119.884	N71°41'39"W
C30	108.667	975.007	6.90238°	108.617	N64°58'31"W
C31	14.867	725.007	1.20228°	14.867	N82°22'11"W
C32	122.267	725.007	9.92944°	122.117	N67°47'6"W
C33	120.497	725.007	9.99175°	120.337	N77°22'45"W
C34	122.117	725.007	9.99370°	121.977	N85°15'30"W
C35	122.807	725.007	10.04276°	122.657	N82°12'39"E
C36	79.217	725.007	6.06153°	79.117	N72°22'33"E
C37	222.837	275.007	46.2372°	216.787	N84°31'28"W
C38	23.547	736.007	3.21900°	23.547	N67°41'7"W
C39	123.027	736.007	9.99437°	122.887	N67°36'10"W
C40	24.227	736.007	3.30539°	24.227	N73°39'10"W
C41	21.087	25.007	24.81133°	20.417	N52°29'30"W
C42	52.097	50.007	59.94153°	48.777	N50°15'30"W
C43	58.067	50.007	66.31150°	54.807	N60°21'30"E
C44	58.067	50.007	66.31150°	54.807	N60°21'30"E
C45	72.977	50.007	88.37722°	66.627	N80°59'30"W
C46	21.037	25.007	44.81123°	20.417	N81°7'50"E
C47	80.267	686.007	10.71133°	80.387	N71°30'27"W
C48	682.987	686.007	60.95443°	72.947	N61°22'34"W
C49	51.047	325.007	9.08372°	50.997	N69°34'25"W
C50	135.337	325.007	23.52710°	134.427	N62°15'19"W
C51	35.697	25.007	88.14732°	32.737	N52°18'08"W
C52	14.107	360.007	3.92148°	14.107	N13°31'51"W
C53	137.897	360.007	21.75154°	137.137	N23°27'59"W
C54	6.117	360.007	0.005820°	6.117	N13°50'53"W
C55	79.847	260.007	17.73538°	79.537	N44°22'52"W
C56	141.457	260.007	32.01731°	133.297	N70°54'58"W
C57	29.387	25.007	36.72041°	27.727	N57°40'14"W
C58	56.277	50.007	64.91388°	53.347	N51°14'32"W
C59	58.067	50.007	66.31150°	54.807	N61°21'30"E
C60	104.987	50.007	120.7749°	86.737	N39°09'49"W
C61	192.117	210.007	55.24597°	185.467	N63°47'32"W
C62	136.217	310.007	25.07310°	135.127	N34°59'48"W
C63	37.617	25.007	88.11130°	34.167	N30°41'16"E
C64	281.647	675.007	22.21271°	280.007	N84°31'19"E
C65	121.927	675.007	11.92029°	121.787	N78°49'57"W
C66	139.917	675.007	11.15272°	139.667	N67°43'13"W
C67	38.857	1025.007	2.07108°	38.857	N62°32'06"W
C68	54.977	1025.007	3.03471°	54.967	N62°39'20"W
C69	146.487	1025.007	6.08117°	146.367	N71°51'07"W
C70	35.697	25.007	88.14732°	32.737	N52°18'08"W
C71	91.607	325.007	14.91029°	91.357	N67°10'10"W
C72	85.147	325.007	13.50730°	84.807	N73°00'10"W
C73	43.177	475.007	8.00756°	43.267	N32°02'50"W
C74	102.637	475.007	11.22246°	102.437	N11°47'59"W
C75	30.777	25.007	33.02144°	28.877	N29°38'46"E
C76	95.587	50.007	109.2151°	81.687	N08°38'47"E
C77	46.907	50.007	55.14448°	45.297	N29°39'39"W
C78	49.747	50.007	56.54407°	47.917	N31°58'07"E
C79	26.407	50.007	33.91524°	26.107	N58°00'35"E
C80	98.577	525.007	11.94526°	98.427	N72°29'49"W
C81	61.587	525.007	9.564376°	61.557	N71°43'00"W
C82	76.477	275.007	11.82029°	76.117	N13°30'19"W
C83	146.837	275.007	10.373624°	145.137	N08°44'11"E
C84	96.787	575.007	6.093838°	96.667	N28°50'31"E
C85	148.257	575.007	11.44621°	147.847	N41°03'00"E
C86	28.777	575.007	3.002590°	28.777	N49°20'10"E
C87	86.457	560.007	10.84847°	86.397	N48°33'45"E
C88	33.657	560.007	3.073744°	33.657	N48°49'29"E
C89	561.397	560.007	25.75544°	543.807	N10°14'11"E
C90	103.717	70.007	84.53287°	94.487	N89°49'34"E



JCH
CONSULTING GROUP, INC.
LAND DEVELOPMENT, SURVEYING & MAPPING
PLANNING - ENVIRONMENTAL - G.I.S.
CORPORATE RELOCATION/REDEVELOPMENT STUDIES
CORPORATE/INDUSTRIAL P.L.M. C.F.M. D.S.A.S.
CIVIL - WATER RESOURCES/LOCAL GOVERNMENT
PHONE: 352-601-6600 www.jch.com



LEGEND UNLESS OTHERWISE NOTED

- = NOT TO SCALE
- R = RADIUS
- L = ARC LENGTH
- Δ = DELTA (CENTRAL ANGLE)
- CH = CHORD DISTANCE
- CB = CHORD BEARING
- NO. = NUMBER
- N. = NORTHING (STATE PLANE EASTING COORDINATES)
- E. = EASTING COORDINATES
- C. = CENTERLINE OF RIGHT OF WAY
- O.R.B. = OFFICIAL RECORDS BOOK OF MARION COUNTY
- D.R.A. = DRAINAGE RETENTION AREA
- LB = LICENSE BUSINESS
- LS = LAND SURVEYOR
- PLS = PROFESSIONAL LAND SURVEYOR
- P.G. = PAGE
- P.B. = PLAT BOOK
- P.T. = POINT OF TANGENCY
- D.A.U.E. = DRAINAGE, ACCESS, AND UTILITY EASEMENT
- D.U.E. = DRAINAGE AND UTILITY EASEMENT
- A.E. = ACCESS EASEMENT
- D.E. = DRAINAGE EASEMENT
- U.E. = UTILITY EASEMENT
- AC. = ACRES
- (NR) = NOT RADIAL
- (XXXX) = SQUARE FOOTAGE AREA
- = PERMANENT REFERENCE MONUMENT (P.R.M.) FOUND 4"x4" CONCRETE MONUMENT (AS NOTED)
- = PERMANENT REFERENCE MONUMENT (P.R.M.) FOUND 5/8" IRON ROD & DISK (AS NOTED)
- = PERMANENT CONTROL POINT (C.P.P.) SET NAIL & DISK (LB 8071)
- = PERMANENT REFERENCE MONUMENT (P.R.M.) SET 5/8" IRON ROD & DISK (LB 8071)
- = PERMANENT CONTROL POINT (C.P.P.) FOUND NAIL & DISK (AS NOTED)

CURVE	LENGTH	RADIUS	DELTA	CHORD	BEARING
C430	21.561	15.007	88.2912°	18.767	N55°59'14"E
C431	11.497	10.007	68.65112°	10.877	N21°27'11"W
C432	66.157	77.007	64.14635°	54.917	N24°13'34"W
C433	68.237	62.507	60.07658°	62.267	N12°49'10"W
C434	83.817	38.007	68.19130°	43.827	N17°35'59"W
C435	39.737	64.007	33.81441°	38.387	N74°16'51"W
C436	73.437	148.007	28.91741°	72.567	N78°39'33"W
C437	61.287	30.007	116.5829°	51.157	N60°37'58"W
C438	25.447	25.007	67.92323°	23.367	N38°17'32"E
C439	19.787	17.007	63.91188°	18.227	N48°09'52"E
C440	5.777	11.507	33.02709°	5.707	N32°31'17"E
C441	41.427	30.007	87.97580°	38.217	N88°30'11"W
C442	86.427	160.007	33.86290°	83.827	N29°21'58"W

LINE	BEARING	LENGTH
L30	N13°30'39"W	55.87
L36	N59°34'03"W	23.83
L37	N62°30'19"W	66.40
L38	N70°48'57"W	91.20
L39	N88°31'59"W	48.36
L40	N51°48'47"W	42.85
L41	N12°27'06"W	44.59
L42	N80°00'00"E	18.39
L43	N90°00'00"E	34.10

PREPARED BY: JCH CONSULTING GROUP, INC., 426 SW 15TH STREET, Ocala, Florida 34471

NOTE:
THIS PLAT IS 10 SHEETS IN TOTAL AND ONE IS NOT COMPLETE WITHOUT THE OTHERS. FOR DEDICATION, NOTES, ACKNOWLEDGMENTS AND LEGAL DESCRIPTION SEE SHEET 1. FOR ROADWAY DETAIL SEE SHEET 2. FOR LOT DIMENSIONS SEE SHEETS 3, 4, 5, 6, 7, 8, 9 AND 10.

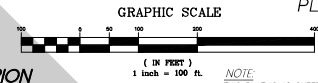


JCH
CONSULTING GROUP INC.
LAND DEVELOPMENT SURVEYING & MAPPING
PLANNING - ENVIRONMENTAL - G.I.S.
CERTIFICATE OF AUTHORIZATION NO. 10407
CHRISTOPHER HOBSON P.S.M. C.E.M. L.S. 13433
604 W. UNIVERSITY BLVD., SUITE 100
ORLANDO, FLORIDA 32810
PHONE: 407.850.1842 WWW.JCHMG.COM

IRONCREST PHASE 1

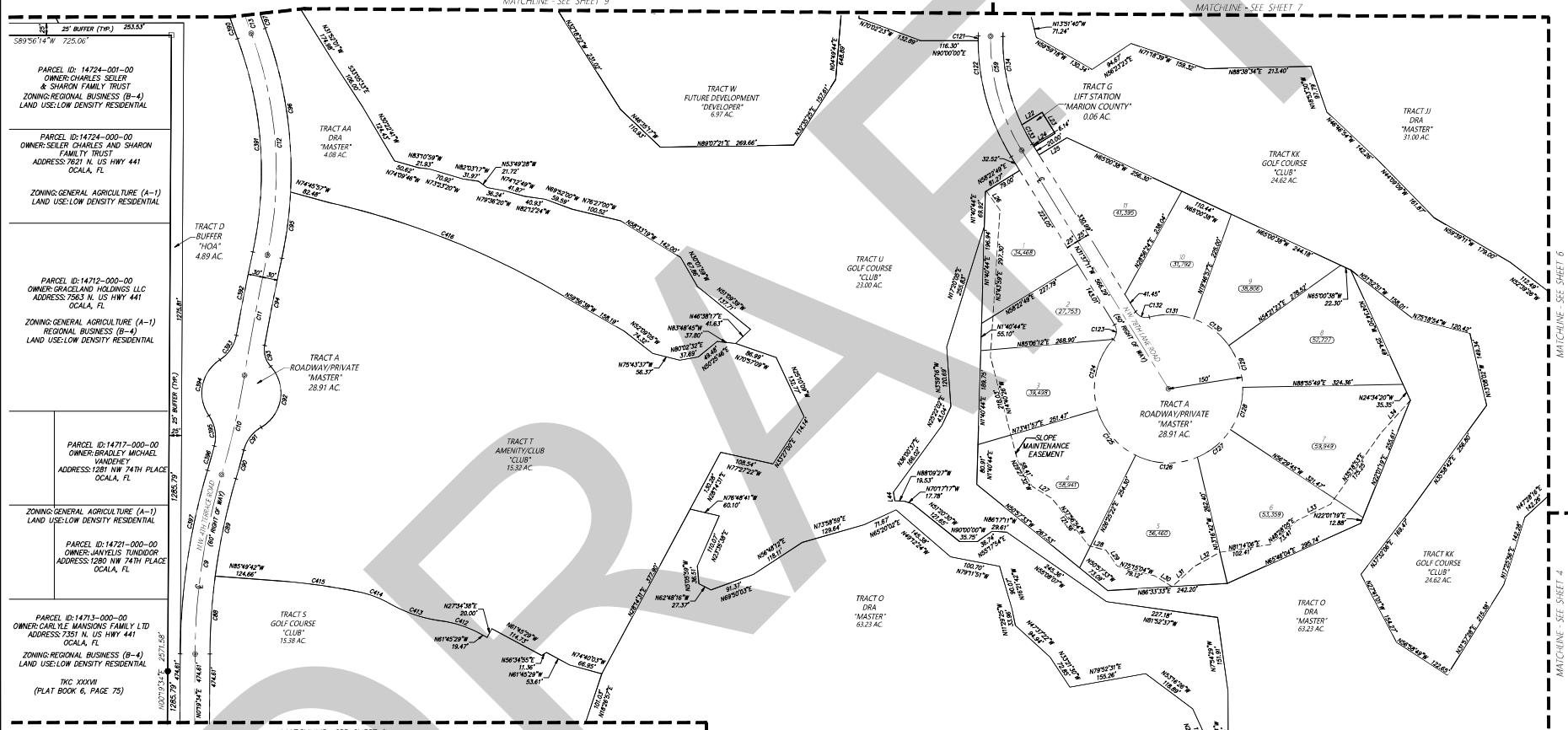
(A PLANNED UNIT DEVELOPMENT)

A REPLAT OF A PORTION OF ALDERMAN ESTATE, PLAT BOOK A, PAGE 122, PUBLIC RECORDS OF MARION COUNTY, FLORIDA A PORTION OF SECTION 17, 18, 19 AND 20, TOWNSHIP 14 SOUTH, RANGE 22 EAST
MARION COUNTY, FLORIDA



PLAT BOOK , PAGE
SHEET 5 OF 10

NOTE:
THIS PLAT IS 10 SHEETS IN TOTAL, AND ONE IS NOT COMPLETE WITHOUT THE OTHERS FOR RELOCATION. NOTES, ACKNOWLEDGMENTS AND LEGAL DESCRIPTION SEE SHEET 1, FOR BOUNDARY DETAIL. SEE SHEET 2, FOR LOT DIMENSIONS. SEE SHEETS 3, 4, 5, 6, 7, 8, 9 AND 10.



MATCHLINE - SEE SHEET 3

CURVE TABLE					CURVE TABLE					CURVE TABLE							
CURVE	LENGTH	RADIUS	DELTA	CHORD	BEARING	CURVE	LENGTH	RADIUS	DELTA	CHORD	BEARING	CURVE	LENGTH	RADIUS	DELTA	CHORD	BEARING
C07	307.88	1300.00	0161250"	366.63	N082250"E	C17	91.36	1372.00	0334856"	91.36	N1832257"W	C27	132.61	1432.00	0251873"	132.56	N1747447"W
C10	206.15	1642.00	0071156"	206.61	N125636"E	C20	84.47	450.00	0019250"	84.47	N007228"E	C30	438.49	770.00	0323742"	432.59	N048003"W
C11	247.25	5000.00	0025000"	247.23	N1014548"E	C22	247.20	450.00	0012829"	244.10	N1552577"W	C32	171.49	503.00	0015772"	171.49	N112112"E
C12	455.58	800.00	0323742"	449.48	N0450803"W	C23	32.03	25.00	0732354"	28.88	N059344"E	C33	61.48	75.00	0465816"	59.78	N1334243"E
C13	378.55	1602.00	0152813"	377.40	N1242148"W	C24	150.20	150.00	0580454"	145.62	N1124200"E	C34	128.32	80.00	0915471"	115.00	N1174502"E
C18	242.41	425.00	0319493"	238.14	N1576477"W	C25	123.77	150.00	0477634"	120.29	N1395670"W	C35	64.71	75.00	0482611"	62.72	N0959105"W
C19	151.78	1270.00	0071073"	151.66	N0131705"E	C26	128.81	150.00	0491879"	125.16	N0841406"W	C36	50.82	612.00	0014823"	50.82	N1573812"E
C20	201.67	1270.00	0091547"	201.42	N1159330"E	C27	87.87	150.00	0337810"	86.72	N0518200"E	C37	378.37	1330.00	0162250"	375.11	N0825359"E
C21	60.12	1672.00	0021371"	60.12	N1159330"E	C28	90.51	150.00	0343426"	89.15	N1613702"E	C42	79.48	218.00	0205374"	79.04	N121211"W
C22	59.52	75.00	0452811"	57.97	N1371522"E	C29	90.51	150.00	0343426"	89.15	N1613702"E	C43	110.31	282.00	0222424"	109.60	N1726322"W
C23	142.65	89.00	0201954"	134.42	N1852707"W	C30	90.51	150.00	0343426"	89.15	N1613702"E	C44	68.86	215.00	0181678"	67.77	N0923275"W
C24	45.86	20.00	0202121"	44.91	N1613707"W	C31	91.11	150.00	0343426"	89.71	N0927105"W	C45	167.56	136.00	0071703"	167.45	N0211707"W
C25	129.85	4010.00	0001422"	129.75	N1118250"E	C32	32.03	25.00	0732354"	28.88	N059344"E	C46	493.10	1644.14	0171102"	491.26	N0832309"W
C26	136.15	830.00	0091954"	135.62	N0735105"E	C33	43.85	402.00	0091747"	43.43	N0829707"W						
C27	137.45	830.00	0037745"	135.16	N0846101"W	C34	184.20	400.00	0262376"	182.58	N1218755"W						

MATCHLINE - SEE SHEET 3

LINE TABLE			LINE TABLE		
LINE	BEARING	LENGTH	LINE	BEARING	LENGTH
L22	N082240"E	48.00	L29	N0359117"W	38.74
L23	N137177"W	50.00	L30	N0959105"W	41.32
L24	N082240"E	33.43	L31	N4718108"E	59.71
L25	N082240"E	66.25	L32	N1159139"E	60.00
L26	N1353808"W	47.15	L33	N0354505"E	74.96
L27	N082240"E	47.93	L34	N4145300"E	80.34
L28	N752614"W	35.61	L44	N082447"W	17.78

MATCHLINE - SEE SHEET 3

LEGEND UNLESS OTHERWISE NOTED

R = NOT TO SCALE
R = RADIUS
L = ARC LENGTH
Δ = DELTA (CENTRAL ANGLE)
CH = CHORD DISTANCE
CB = CHORD BEARING
NO. = NUMBER
N. = NORTHING (STATE PLANE COORDINATES)
E. = EASTING (STATE PLANE COORDINATES)
C. = CENTERLINE OF RIGHT OF WAY
O.R.B. = OFFICIAL RECORDS BOOK OF MARION COUNTY
D.R.A. = DRAINAGE RETENTION AREA
L.S. = LICENSE BUSINESS
L.S. = LAND SURVEYOR
P.L.S. = PROFESSIONAL LAND SURVEYOR

PG. = PAGE
P.B. = PLAT BOOK
P.T. = POINT OF TANGENCY
D.A.U.E. = DRAINAGE, ACCESS, AND UTILITY EASEMENT
D.U.E. = DRAINAGE AND UTILITY EASEMENT
A.E. = ACCESS EASEMENT
D.E. = DRAINAGE EASEMENT
U.E. = UTILITY EASEMENT
A.C. = ACRES
(NR) = NOT RADIAL
XXXX = SQUARE FOOTAGE AREA

□ = PERMANENT REFERENCE MONUMENT (P.R.M.)
FOUND 4" X 4" CONCRETE MONUMENT (AS NOTED)
= PERMANENT REFERENCE MONUMENT (P.R.M.)
FOUND 5/8 IRON ROD & DISK (AS NOTED)
● = PERMANENT CONTROL POINT (P.C.P.)
SET NAIL & DISK (LB 8071)
= PERMANENT REFERENCE MONUMENT (P.R.M.)
SET 5/8 IRON ROD & DISK (LB 8071)
○ = PERMANENT CONTROL POINT (P.C.P.)
FOUND NAIL & DISK (AS NOTED)

PREPARED BY: JCH CONSULTING GROUP, INC., 426 SW 15TH STREET, Ocala, Florida, 34471



JCH
CONSULTING GROUP, INC.
LAND DEVELOPMENT SURVEYING & MAPPING
PLANNING - ENVIRONMENTAL - GIS
CIVIL ENGINEERING & INFORMATION SYSTEMS
CHRISTOPHER JOHNSON, P.S., C.E.M., L.S. 18495
404 W. UNIVERSITY BLVD., SUITE 100
ORLANDO, FLORIDA 32804
PHONE (321) 461-1422 www.jchgroup.com

IRONCREST PHASE 1

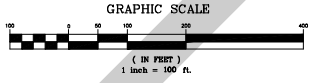
(A PLANNED UNIT DEVELOPMENT)

A REPLAT OF A PORTION OF ALDERMAN ESTATE, PLAT BOOK A, PAGE 122, PUBLIC RECORDS OF MARION COUNTY, FLORIDA A PORTION OF SECTION 17, 18, 19 AND 20, TOWNSHIP 14 SOUTH, RANGE 22 EAST MARION COUNTY, FLORIDA

CURVE TABLE					
CURVE	LENGTH	RADIUS	DELTA	CHORD	BEARING
C29	941.167	2408.007	022°23'38"	935.187	N88°43'14"W
C30	484.007	575.007	048°52'48"	469.747	N85°13'04"E
C31	308.887	702.007	025°12'37"	304.727	N74°27'29"E
C32	178.877	433.007	023°57'56"	174.667	N70°30'45"W
C33	114.447	433.007	019°56'48"	114.177	N72°29'17"W
C34	239.717	454.007	028°59'25"	237.277	N75°25'59"W
C35	178.187	454.007	022°35'48"	177.617	N70°19'56"E
C36	216.397	617.007	020°02'00"	214.107	N71°36'23"E
C37	253.027	400.007	036°14'34"	248.837	N72°15'58"E
C38	216.517	617.007	020°17'28"	217.377	N68°52'22"W
C39	655.467	537.007	069°59'17"	615.837	N14°18'32"E
C40	118.127	2433.007	002°46'56"	118.127	N86°12'50"W
C41	118.127	2433.007	002°46'56"	118.127	N85°18'56"W
C42	118.127	2433.007	002°46'56"	118.127	N84°14'50"W
C43	118.127	2433.007	002°46'56"	118.127	N83°10'45"W
C44	118.127	2433.007	002°46'56"	118.127	N82°06'40"W
C45	50.907	2433.007	001°17'50"	50.907	N80°19'05"W
C46	63.527	598.007	006°50'11"	63.497	N72°57'38"W
C47	111.687	598.007	010°42'00"	111.517	N80°21'47"W
C48	111.687	598.007	010°42'00"	111.517	N80°19'47"W
C49	110.597	598.007	010°23'46"	110.417	N77°24'24"E
C50	107.627	598.007	010°28'50"	107.507	N86°52'36"E
C51	14.367	577.007	001°33'14"	14.307	N82°22'48"E
C52	143.247	677.007	012°07'20"	142.077	N89°18'06"W
C53	136.287	677.007	013°32'02"	136.057	N89°17'41"E
C54	32.047	25.007	073°25'58"	29.897	N86°23'27"W
C55	82.087	458.007	015°16'07"	81.977	N24°48'37"W
C56	102.347	429.007	013°40'54"	102.037	N23°30'39"W
C57	200.037	429.007	026°42'41"	198.197	N02°51'16"W
C58	83.667	429.007	011°10'23"	83.537	N16°11'16"E
C59	178.857	642.007	015°47'31"	178.397	N13°42'42"E
C60	36.897	25.007	084°32'18"	33.637	N48°59'06"E
C61	117.397	425.007	015°48'39"	117.027	N82°20'27"E
C62	142.047	425.007	019°08'57"	141.387	N84°57'11"E
C63	20.527	25.007	047°03'07"	19.907	N78°51'46"E
C64	60.907	50.007	069°15'42"	57.947	N67°19'59"E
C65	71.487	50.007	087°54'24"	65.547	N58°09'03"W
C66	66.677	50.007	076°23'18"	61.847	N87°10'52"W
C67	42.337	50.007	048°39'13"	41.077	N30°18'24"E
C68	31.667	25.007	049°38'36"	29.997	N30°19'58"E
C69	82.907	375.007	012°39'58"	82.737	N62°02'17"E
C70	143.887	375.007	021°58'59"	143.007	N79°21'46"E
C71	37.907	25.007	086°51'42"	34.377	N46°12'54"W
C72	169.587	642.007	015°05'23"	168.597	N10°14'45"W
C73	9.097	642.007	005°48'40"	9.097	N18°14'46"W
C74	139.187	512.007	015°34'32"	138.767	N10°19'50"W
C75	132.427	512.007	014°49'00"	132.037	N04°17'56"E
C76	303.837	512.007	039°35'40"	246.837	N31°30'18"E
C77	567.397	262.007	057°50'44"	543.607	N10°14'16"E
C78	36.287	292.007	003°47'18"	36.277	N16°49'59"W
C79	196.907	592.007	009°16'52"	196.797	N10°29'29"W
C80	105.547	592.007	017°39'59"	103.337	N07°03'17"E
C81	123.017	592.007	017°54'40"	122.857	N11°54'23"E
C82	38.537	592.007	003°47'44"	38.537	N19°14'50"E
C83	87.547	479.007	012°38'15"	87.477	N16°22'20"E
C84	28.597	479.007	003°29'01"	28.567	N09°25'38"E
C85	36.047	25.007	082°35'46"	33.007	N49°09'53"E
C86	35.037	25.007	080°17'07"	32.237	N49°32'42"W
C87	29.827	479.007	003°34'00"	29.857	N11°11'58"W
C88	128.307	479.007	015°17'58"	128.917	N20°42'07"W
C89	12.627	479.007	001°30'24"	12.627	N29°11'24"W
C90	118.317	408.007	016°36'52"	117.907	N21°38'15"E
C91	121.267	408.007	017°01'44"	120.837	N18°48'51"W
C92	34.007	408.007	004°46'27"	33.997	N08°09'59"E
C93	30.787	458.007	003°15'19"	30.787	N08°52'51"E
C94	97.607	458.007	012°12'36"	97.427	N10°28'59"W
C95	44.237	25.007	049°29'52"	38.717	N39°39'58"E
C96	96.437	737.007	007°30'00"	96.307	N83°51'48"E
C97	111.157	737.007	008°55'04"	111.047	N74°50'46"W
C98	110.297	737.007	008°47'14"	110.197	N69°01'58"E
C99	3.327	548.007	000°29'51"	3.327	N61°51'37"E
C100	149.977	548.007	015°40'47"	149.507	N69°22'28"E
C101	149.977	548.007	015°40'47"	149.507	N85°33'13"E
C102	149.977	548.007	015°40'47"	149.507	N78°45'59"W
C103	9.657	548.007	001°10'53"	9.657	N79°25'10"W

- LEGEND** UNLESS OTHERWISE NOTED
- = NOT TO SCALE
 - R = RADIUS
 - L = ARC LENGTH
 - Δ = DELTA (CENTRAL ANGLE)
 - CH = CHORD DISTANCE
 - CB = CHORD BEARING
 - NO. = NUMBER
 - N = NORTHING (STATE PLANE COORDINATES)
 - E = EASTING (STATE PLANE COORDINATES)
 - ☐ = CENTERLINE OF RIGHT OF WAY
 - OR.B. = OFFICIAL RECORDS BOOK OF MARION COUNTY
 - D.R.A. = DRAINAGE RETENTION AREA
 - LB = LICENSE BUSINESS
 - LS = LAND SURVEYOR
 - P.L.S. = PROFESSIONAL LAND SURVEYOR
 - PQ = PAGE
 - P.B. = PLAT BOOK
 - P.T. = POINT OF TANGENCY
 - D.A.U.E. = DRAINAGE, ACCESS, AND UTILITY EASEMENT
 - D.U.E. = DRAINAGE AND UTILITY EASEMENT
 - A.E. = ACCESS EASEMENT
 - D.E. = DRAINAGE EASEMENT
 - U.E. = UTILITY EASEMENT
 - AC = ACCESS
 - (NR) = NOT RADIAL
 - ☐ = PERMANENT REFERENCE MONUMENT (P.R.M.) FOUND 4" X 4" CONCRETE MONUMENT (AS NOTED)
 - ⊙ = PERMANENT REFERENCE MONUMENT (P.R.M.) FOUND 5/8" IRON ROD & DISK (AS NOTED)
 - ⊙ = PERMANENT CONTROL POINT (P.C.P.) SET NAT & DISK (LB 8071)
 - ⊙ = PERMANENT REFERENCE MONUMENT (P.R.M.) SET 5/8" IRON ROD & DISK (LB 8071) FOUND NAIL & DISK (AS NOTED)
 - = UTILITY EASEMENT
 - = ADDRESS
 - (NR) = NOT RADIAL
 - ☐ = SQUARE FOOTAGE AREA

NOTE
THIS PLAT IS 10 SHEETS IN TOTAL, AND ONE IS NOT COMPLETE WITHOUT THE OTHERS. FOR DEDICATION, NOTES, ACKNOWLEDGMENTS AND LEGAL DESCRIPTION SEE SHEET 1. FOR BOUNDARY DETAIL SEE SHEET 2. FOR LOT DIMENSIONS SEE SHEETS 3, 4, 5, 6, 7, 8, 9 AND 10.

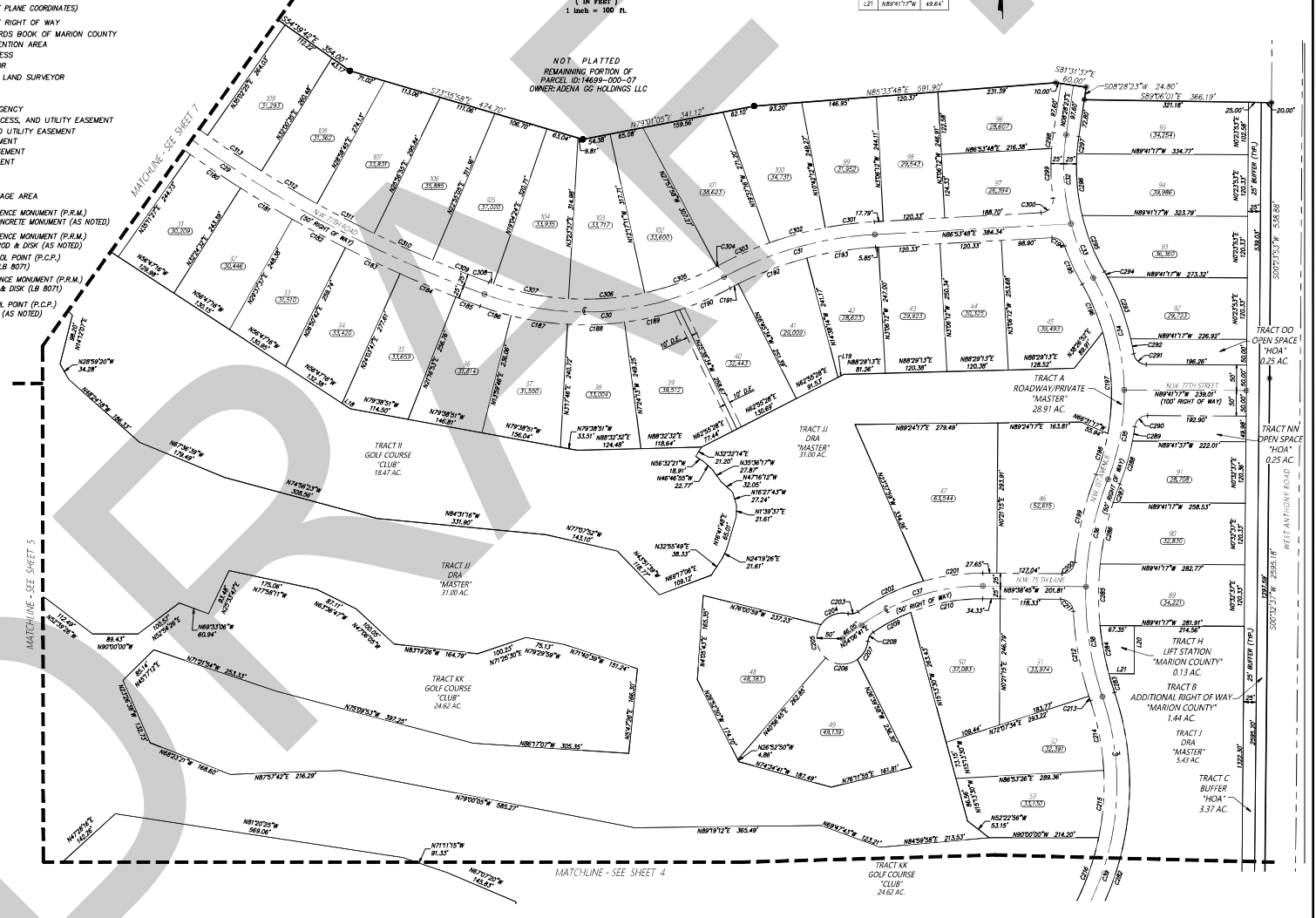


LINE TABLE

LINE	BEARING	LENGTH
L18	N85°47'46"W	79.96'
L19	N82°52'58"E	12.81'
L20	N01°48'14"E	84.14'
L21	N89°41'7"W	49.64'

CURVE TABLE

CURVE	LENGTH	RADIUS	DELTA	CHORD	BEARING
C309	117.83'	2383.00'	002°50'57"	117.82'	N88°29'59"W
C310	126.05'	2383.00'	003°01'50"	126.03'	N85°24'10"W
C311	126.05'	2383.00'	003°01'50"	126.03'	N82°21'10"W
C312	126.05'	2383.00'	003°01'50"	126.03'	N89°30'20"W
C313	126.05'	2383.00'	003°01'50"	126.03'	N56°28'30"W





JCH
CONSULTING GROUP, INC.
LAND DEVELOPMENT SURVEYING & MAPPING
PLANNING - ENVIRONMENTAL - GIS
CITY OF JACKSONVILLE, FLORIDA
CHRISTOPHER J. HOBSON, P.E., C.E.M., L.S.
104 NW UNIVERSITY BLVD., SUITE 100
JACKSONVILLE, FLORIDA 32202
PHONE: 321-451-1442 www.jchmg.com

IRONCREST PHASE 1

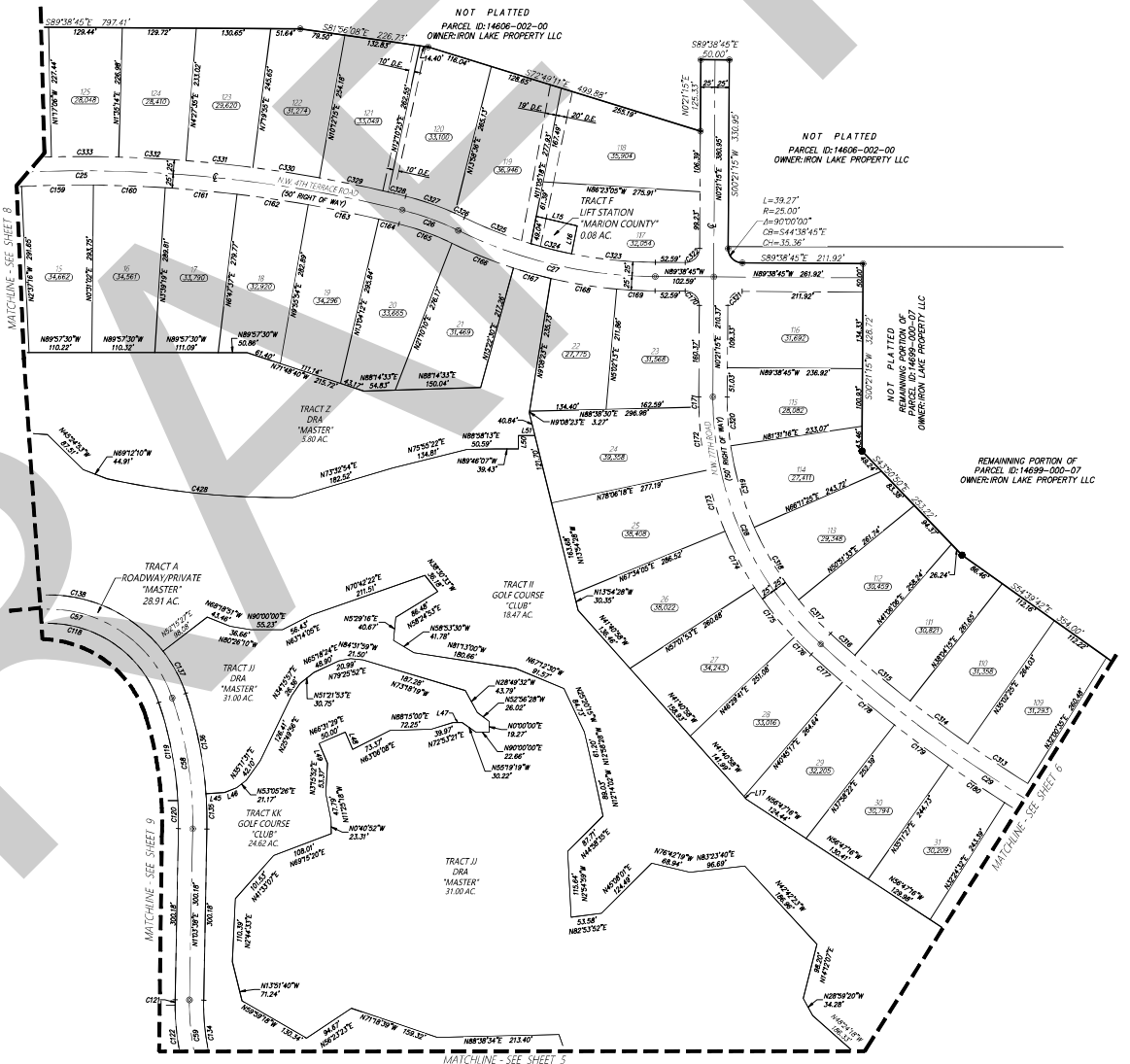
(A PLANNED UNIT DEVELOPMENT)

A REPLAT OF A PORTION OF ALDERMAN ESTATE, PLAT BOOK A, PAGE 122, PUBLIC RECORDS OF MARION COUNTY, FLORIDA A PORTION OF SECTION 17, 18, 19, AND 20, TOWNSHIP 14 SOUTH, RANGE 22 EAST
MARION COUNTY, FLORIDA

PLAT BOOK , PAGE
SHEET 7 OF 10

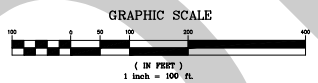
CURVE TABLE					CURVE TABLE						
CURVE	LENGTH	RADIUS	DELTA	CHORD	BEARING	CURVE	LENGTH	RADIUS	DELTA	CHORD	BEARING
C25	981.23	2330.00	024°07'44"	974.00	N88°05'40"W	C72	171.81	608.60	010°32'31"	171.65	N06°44'54"W
C26	104.85	500.00	012°05'54"	104.66	N70°01'31"W	C73	171.81	608.60	010°32'31"	171.65	N10°09'48"W
C27	359.88	800.00	025°37'52"	354.80	N76°49'49"W	C74	171.81	608.60	010°32'31"	171.65	N16°42'01"W
C28	482.17	581.00	047°52'40"	473.12	N23°32'05"W	C75	171.81	608.60	010°32'31"	171.65	N28°43'13"W
C29	841.16	2408.00	027°23'38"	835.18	N38°43'14"W	C76	42.64	608.60	004°01'36"	42.63	N45°30'52"W
C30	468.93	230.00	116°19'59"	390.78	N76°36'40"W	C77	73.11	2433.00	001°44'48"	73.11	N48°23'54"W
C31	233.46	674.00	019°50'45"	232.29	N68°51'45"W	C78	118.13	2433.00	002°46'55"	118.12	N53°58'10"W
C32	242.41	425.00	032°40'49"	239.14	N15°16'47"W	C79	118.13	2433.00	002°46'55"	118.12	N53°25'05"W
C33	345.53	205.00	090°34'25"	306.00	N67°04'20"W	C80	118.13	2433.00	002°46'55"	118.12	N56°12'00"W
C34	175.74	649.00	019°30'53"	175.20	N11°09'41"W	C81	126.03	2385.00	003°01'30"	126.03	N58°28'53"W
C35	492.06	649.00	004°19'52"	492.05	N01°36'18"W	C82	126.03	2385.00	003°01'30"	126.03	N53°29'40"W
C36	9.07	480.00	001°12'01"	9.07	N09°39'28"E	C83	136.05	2385.00	003°01'30"	136.05	N50°59'50"W
C37	247.20	450.00	031°28'29"	244.10	N15°53'57"W	C84	57.78	2385.00	003°01'30"	57.78	N48°12'40"W
C38	184.20	400.00	020°23'58"	182.58	N12°07'52"W	C85	81.64	558.00	008°25'25"	81.57	N43°19'56"W
C39	62.03	699.00	005°02'04"	62.01	N03°28'54"W	C86	148.31	558.00	019°19'51"	148.86	N31°38'31"W
C40	180.99	699.00	014°45'41"	179.59	N11°24'17"W	C87	148.31	558.00	019°19'51"	148.86	N16°08'30"W
C41	84.24	256.00	018°55'40"	83.86	N28°14'58"W	C88	86.02	558.00	008°49'58"	85.94	N04°03'44"W
C42	361.73	256.00	081°16'33"	332.15	N78°21'04"W	C89	39.27	25.00	090°00'00"	35.38	N45°21'15"E
C43	126.25	2305.00	003°08'18"	126.23	N89°56'53"E	C90	39.27	25.00	090°00'00"	35.38	N45°21'15"E
C44	126.25	2305.00	003°08'18"	126.23	N89°56'53"E	C91	147.88	775.00	010°59'51"	147.65	N84°19'46"W
C45	126.25	2305.00	003°08'18"	126.23	N89°56'53"E	C92	73.56	775.00	005°26'15"	73.54	N79°59'38"W
C46	126.25	2305.00	003°08'18"	126.23	N89°56'53"E	C93	125.25	775.00	009°15'56"	125.12	N68°38'41"W
C47	126.25	2305.00	003°08'18"	126.23	N89°56'53"E	C94	18.72	725.00	002°02'36"	18.72	N85°52'19"W
C48	36.21	2305.00	000°54'01"	36.21	N76°28'48"W	C95	31.37	525.00	009°58'48"	31.26	N71°08'58"W
C49	99.61	475.00	012°07'54"	99.43	N70°01'31"W	C96	31.07	2355.00	000°46'01"	31.07	N76°24'25"W
C50	176.36	825.00	008°04'52"	176.28	N68°05'19"W	C97	123.78	2355.00	003°04'41"	123.78	N78°17'24"W
C51	428.18	825.00	004°44'01"	428.18	N73°27'49"W	C98	316.86	2355.00	003°02'20"	316.85	N81°38'19"W
C52	177.00	825.00	000°07'54"	176.99	N89°56'53"W	C99	131.91	2355.00	002°56'20"	131.89	N84°01'15"W
C53	67.43	825.00	004°43'58"	67.41	N87°19'16"W	C100	316.86	2355.00	003°02'20"	316.85	N89°38'26"W
C54	39.27	25.00	090°00'00"	35.38	N44°48'45"W	C101	316.86	2355.00	003°02'20"	316.85	N89°56'53"W
C55	18.17	688.00	001°42'40"	18.17	N00°30'08"W	C102	328.15	1422.90	013°13'06"	327.43	N84°17'01"W

LINE TABLE	
LINE	BEARING LENGTH
L15	N76°44'54"W 73.17
L16	N11°24'20"E 60.00
L17	N41°40'58"W 7.53
L40	N81°10'15"E 32.86
L46	N87°42'06"E 22.96
L47	N00°00'00"E 156.80
L48	N23°28'31"W 13.02
L49	N23°28'31"W 37.29
L50	N09°58"E 23.50
L51	N89°50'50"W 28.84



LEGEND UNLESS OTHERWISE NOTED

- = NOT TO SCALE
- R = RADIUS
- L = ARC LENGTH
- Δ = DELTA (CENTRAL ANGLE)
- CH = CHORD DISTANCE
- CB = CHORD BEARING
- NO. = NUMBER
- N. = NORTHING (STATE PLANE COORDINATES)
- E. = EASTING
- ☉ = CENTERLINE OF RIGHT OF WAY
- O.R.B. = OFFICIAL RECORD BOOK OF MARION COUNTY
- D.R.A. = DRAINAGE RETENTION AREA
- LB = LICENSE BUSINESS
- LS = LAND SURVEYOR
- PLS = PROFESSIONAL LAND SURVEYOR
- PG. = PAGE
- P.B. = PLAT BOOK
- P.T. = POINT OF TANGENCY
- D.A.U.E. = DRAINAGE, ACCESS, AND UTILITY EASEMENT
- D.U.E. = DRAINAGE AND UTILITY EASEMENT
- A.E. = ACCESS EASEMENT
- D.E. = DRAINAGE EASEMENT
- U.E. = UTILITY EASEMENT
- AC. = ACRES
- (NR) = NOT RADIAL
- (XXX) = SQUARE FOOTAGE AREA
- = PERMANENT REFERENCE MONUMENT (P.R.M.) FOUND 4" x 4" CONCRETE MONUMENT (AS NOTED)
- = PERMANENT REFERENCE MONUMENT (P.R.M.) FOUND 5/8" IRON ROD & DISK (AS NOTED)
- ⊙ = PERMANENT CONTROL POINT (P.C.P.) SET NAIL & DISK (LB 8071)
- ⊙ = PERMANENT REFERENCE MONUMENT (P.R.M.) SET 5/8" IRON ROD & DISK (LB 8071)
- ⊙ = PERMANENT CONTROL POINT (P.C.P.) FOUND NAIL & DISK (AS NOTED)



NOTE: THIS PLAT IS 10 SHEETS IN TOTAL, AND ONE IS NOT COMPLETE WITHOUT THE OTHERS. FOR DESIGNATION, NOTES, ACKNOWLEDGMENTS AND LEGAL DESCRIPTION SEE SHEET 1. FOR BOUNDARY DETAIL SEE SHEET 2. FOR LOT DIMENSIONS SEE SHEETS 3, 4, 5, 6, 7, 8, 9 AND 10.

PREPARED BY: JCH CONSULTING GROUP, INC., 426 SW 15TH STREET, Ocala, Florida 34471



JCH
CONSULTING GROUP, INC.
LAND DEVELOPMENT SURVEYING & MAPPING
PLANNING - ENVIRONMENTAL - GIS
CHRISTOPHER J. HOBSON, P.E., C.E.M., C.L.A.S.S.
400 W. UNIVERSITY BLVD., SUITE 100
ORLANDO, FLORIDA 32801
PHONE: 407.853.1842 www.jchmg.com

IRONCREST PHASE 1

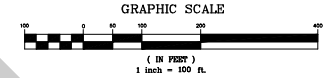
(A PLANNED UNIT DEVELOPMENT)

PLAT BOOK , PAGE
SHEET 8 OF 10

A REPLAT OF A PORTION OF ALDERMAN ESTATE, PLAT BOOK A, PAGE 122, PUBLIC RECORDS OF MARION COUNTY, FLORIDA A PORTION OF SECTION 17, 18, 19 AND 20, TOWNSHIP 14 SOUTH, RANGE 22 EAST

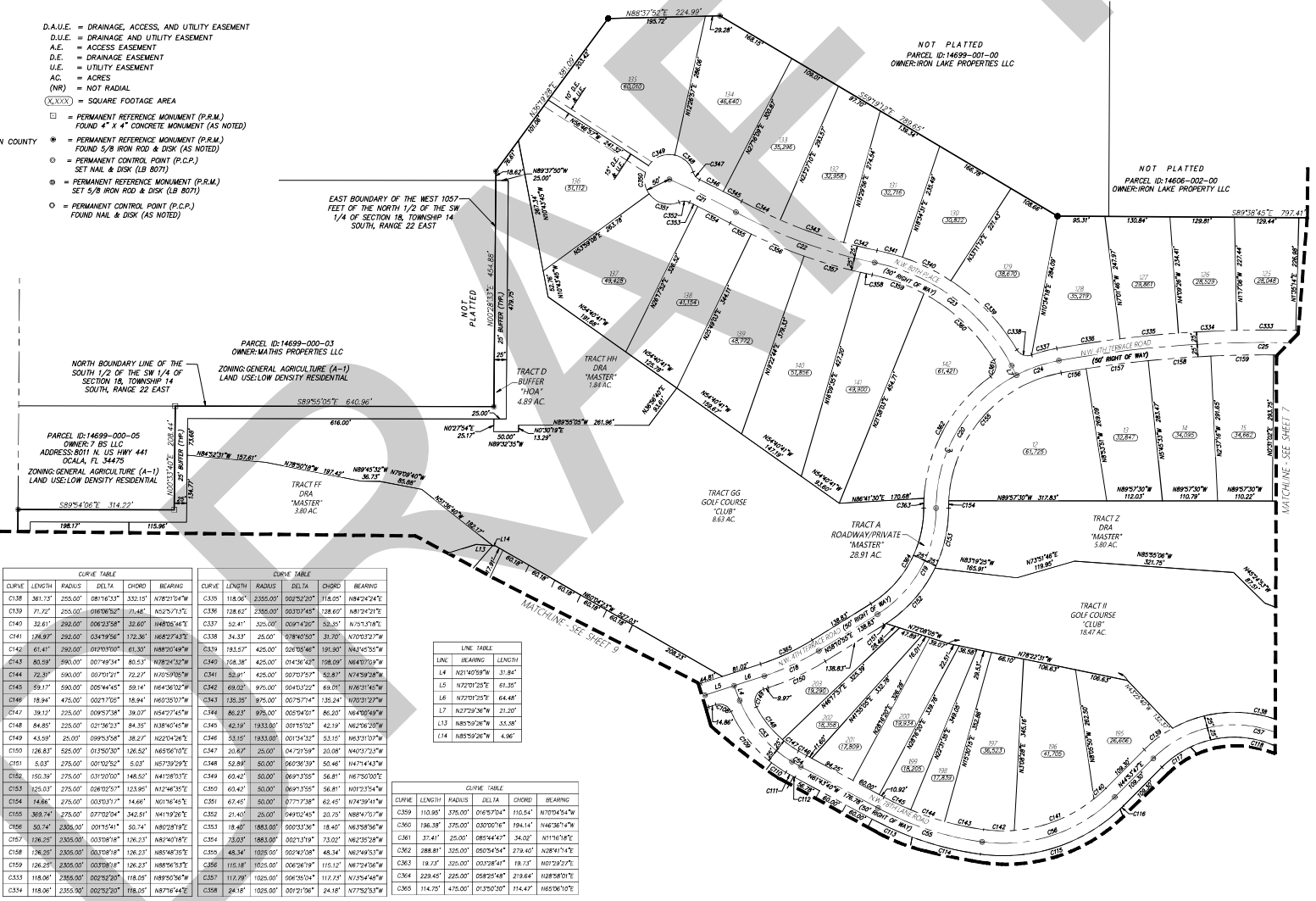
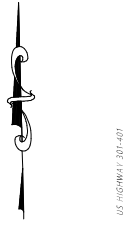
MARION COUNTY, FLORIDA

NOTE
THIS PLAT IS 10 SHEETS IN TOTAL, AND ONE IS NOT COMPLETE WITHOUT THE OTHERS. FOR EDUCATION, NOTES, ACKNOWLEDGMENTS AND LEGAL DESCRIPTION SEE SHEET 1, FOR BOUNDARY DETAIL SEE SHEET 2, FOR LOT DIMENSIONS SEE SHEETS 3, 4, 5, 6, 7, 8, 9 AND 10.



LEGEND UNLESS OTHERWISE NOTED

- N = NOT TO SCALE
 - R = RADIUS
 - L = ARC LENGTH
 - Δ = DELTA (CENTRAL ANGLE)
 - CH = CHORD DISTANCE
 - CB = CHORD BEARING
 - NO. = NUMBER
 - NL = NORTHING (STATE PLANE COORDINATES)
 - E = EASTING
 - ℄ = CENTERLINE OF RIGHT OF WAY
 - O.R.B. = OFFICIAL RECORDS BOOK OF MARION COUNTY
 - D.R.A. = DRAINAGE RETENTION AREA
 - LB = LICENSE BUSINESS
 - LS = LAND SURVEYOR
 - PLS = PROFESSIONAL LAND SURVEYOR
 - PG. = PAGE
 - P.B. = PLAT BOOK
 - P.T. = POINT OF TANGENCY
- D.A.U.E. = DRAINAGE, ACCESS, AND UTILITY EASEMENT
 - D.U.E. = DRAINAGE AND UTILITY EASEMENT
 - A.E. = ACCESS EASEMENT
 - D.E. = DRAINAGE EASEMENT
 - U.E. = UTILITY EASEMENT
 - AC. = ACRES
 - (NR) = NOT RADIAL
 - (XXXX) = SQUARE FOOTAGE AREA
 - = PERMANENT REFERENCE MONUMENT (P.R.M.) FOUND 4" X 4" CONCRETE MONUMENT (AS NOTED)
 - = PERMANENT REFERENCE MONUMENT (P.R.M.) FOUND 5/8 IRON ROD & DISK (AS NOTED)
 - = PERMANENT CONTROL POINT (P.C.P.) SET NAIL & DISK (LB 807)
 - = PERMANENT REFERENCE MONUMENT (P.R.M.) FOUND 5/8 IRON ROD & DISK (LB 807)
 - = PERMANENT CONTROL POINT (P.C.P.) FOUND NAIL & DISK (AS NOTED)



CURVE TABLE					CURVE TABLE					CURVE TABLE								
CURVE	LENGTH	RADIUS	DELTA	CHORD	BEARING	CURVE	LENGTH	RADIUS	DELTA	CHORD	BEARING	CURVE	LENGTH	RADIUS	CHORD	BEARING		
C18	120.37	500.00	03°30'57"	120.37	N85°06'10"E	C18	38.12	255.00	08°17'37"	33.15	N78°01'54"W	C18	118.95	2355.00	00°29'20"	118.95	N84°24'24"E	
C19	254.95	250.00	08°29'48"	244.04	N28°58'01"E	C19	71.22	255.00	09°07'00"	71.48	N52°29'17"E	C19	128.62	2355.00	00°37'48"	128.62	N87°24'29"E	
C20	328.58	300.00	06°42'48"	312.49	N31°07'46"E	C20	32.41	280.00	09°03'38"	32.80	N48°05'44"E	C20	32.41	320.00	09°01'49"	32.81	N75°17'14"E	
C21	149.29	100.00	04°28'59"	149.59	N63°47'14"W	C21	128.97	230.00	03°49'56"	122.36	N48°27'43"E	C21	34.33	25.00	0°28'05"	31.70	N10°02'22"W	
C22	298.05	1000.00	01°20'43"	296.85	N70°01'01"W	C22	61.47	290.00	01°03'00"	61.30	N88°20'49"W	C22	193.57	425.00	02°06'54"	191.95	N42°43'56"W	
C23	356.49	4000.00	05°10'30"	344.61	N57°01'31"W	C23	80.59	590.00	00°49'34"	80.53	N78°24'32"W	C23	149.0	108.38	425.00	01°31'42"	158.09	N43°05'09"W
C24	80.76	300.00	01°20'04"	80.42	N71°07'28"E	C24	72.37	590.00	00°50'21"	72.27	N70°59'02"W	C24	59.81	425.00	00°57'57"	59.87	N74°59'28"W	
C25	981.23	2330.00	02°47'44"	874.00	N88°52'46"W	C25	59.17	590.00	00°54'45"	59.14	N64°36'02"W	C25	69.02	975.00	00°43'22"	69.01	N76°31'02"W	
C26	164.76	250.00	03°45'36"	161.79	N49°53'47"W	C26	18.94	475.00	00°21'05"	18.94	N60°35'07"W	C26	135.35	975.00	00°57'47"	135.24	N70°31'22"W	
C27	18.84	500.00	00°07'05"	18.84	N89°35'07"W	C27	38.12	235.00	00°57'38"	38.07	N54°27'45"W	C27	86.23	975.00	00°54'01"	86.20	N64°00'49"W	
C28	221.05	615.00	02°03'59"	219.87	N78°51'29"W	C28	84.85	225.00	02°18'23"	84.35	N38°40'45"W	C28	42.19	1833.00	00°15'02"	42.19	N62°06'20"W	
C29	292.02	230.00	05°46'54"	281.81	N71°17'41"E	C29	43.59	25.00	00°09'35"	38.27	N24°12'28"E	C29	33.15	1833.00	00°13'42"	33.15	N63°31'07"W	
C30	466.83	230.00	11°19'59"	390.78	N78°56'40"W	C30	126.83	525.00	01°35'07"	126.52	N69°56'10"E	C30	20.67	25.00	04°29'59"	20.68	N49°32'25"W	
C31	36.47	25.00	08°53'07"	33.27	N66°16'02"W	C31	5.03	275.00	00°10'56"	5.03	N57°39'29"E	C31	52.89	50.00	06°08'39"	52.46	N47°44'43"W	
C32	133.47	275.00	02°27'47"	131.47	N88°24'24"E	C32	195.39	275.00	01°07'07"	148.50	N41°08'07"E	C32	60.42	50.00	06°39'35"	58.81	N67°06'00"E	
C33	34.47	275.00	00°17'05"	34.47	N89°03'07"W	C33	325.01	235.00	00°01'59"	123.84	N1°24'01"E	C33	60.42	50.00	06°39'35"	58.81	N67°06'00"E	
C34	117.27	525.00	00°36'50"	117.27	N85°24'29"E	C34	148.86	235.00	00°33'17"	144.66	N1°16'54"E	C34	67.42	50.00	07°27'28"	65.17	N74°04'14"W	
C35	3.22	525.00	00°01'56"	3.22	N61°33'07"E	C35	369.74	275.00	02°27'04"	342.81	N41°19'28"E	C35	31.40	25.00	04°02'44"	30.75	N88°47'07"W	
C36	88.24	640.00	00°27'55"	88.17	N85°40'19"W	C36	50.6	235.00	00°11'54"	50.74	N80°29'19"E	C36	18.48	1883.00	00°03'36"	18.48	N63°58'56"W	
C37	141.80	640.00	01°24'40"	141.51	N75°08'29"W	C37	126.25	2355.00	00°33'01"	126.23	N82°40'18"E	C37	23.03	1883.00	00°21'31"	23.02	N82°02'28"W	
C38	305.13	4425.00	05°10'75"	295.11	N72°07'08"E	C38	746.25	2305.00	00°33'01"	126.23	N82°40'18"E	C38	48.34	1025.00	00°24'08"	48.34	N62°04'53"W	
C39	8.97	342.00	00°19'49"	8.97	N45°41'42"E	C39	126.25	2305.00	00°33'01"	126.23	N82°40'18"E	C39	115.18	1025.00	00°06'39"	115.12	N67°24'56"W	
C40	70.64	205.00	01°04'40"	70.37	N45°46'07"E	C40	118.06	2355.00	00°22'20"	118.05	N89°50'56"W	C40	117.29	1025.00	00°06'30"	117.23	N73°54'48"W	
C41	345.51	205.00	06°54'25"	306.00	N67°04'29"W	C41	118.06	2355.00	00°22'20"	118.05	N89°50'56"W	C41	24.18	1025.00	00°21'26"	24.18	N77°52'53"W	

LINE TABLE

LINE	BEARING	LENGTH
L4	N21°45'59"W	31.84'
L5	N72°07'25"E	61.35'
L6	N72°07'25"E	64.48'
L7	N27°22'36"W	21.20'
L13	N85°59'26"W	35.58'
L14	N85°59'26"W	4.96'

CURVE TABLE

CURVE	LENGTH	RADIUS	DELTA	CHORD	BEARING
C39	110.80	375.00	01°07'50"	110.54	N70°04'54"W
C40	196.58	375.00	00°07'04"	194.14	N46°06'47"W
C41	37.41	25.00	08°54'44"	37.40	N11°16'18"E
C42	288.81	375.00	05°04'54"	274.02	N28°11'14"E
C43	18.71	320.00	00°28'54"	18.71	N01°29'27"E
C44	239.45	225.00	05°25'48"	219.64	N28°18'01"E
C45	114.70	475.00	01°30'07"	114.47	N85°06'10"E

PREPARED BY: JCH CONSULTING GROUP, INC., 426 SW 15TH STREET, Ocala, Florida, 34471



JCH
CONSULTING GROUP, INC.
LAND DEVELOPMENT SURVEYING & MAPPING
PLANNING - ENVIRONMENTAL - GIS
CERTIFICATE OF AUTHORIZATION NO. 12400
CHRISTOPHER J. HOBSON, P.S.M., C.E.M., C.L.A.S.S.
604 NW 17TH AVENUE, SUITE 100, GAITHERSBURG, MD 20878
PHONE: 301-481-1182 www.JCH.com

IRONCREST PHASE 1

(A PLANNED UNIT DEVELOPMENT)

A REPLAT OF A PORTION OF ALDERMAN ESTATE, PLAT BOOK A, PAGE 122, PUBLIC RECORDS OF MARION COUNTY, FLORIDA A PORTION OF SECTION 17, 18, 19 AND 20, TOWNSHIP 14 SOUTH, RANGE 22 EAST MARION COUNTY, FLORIDA

LEGEND UNLESS OTHERWISE NOTED

- A- = NOT TO SCALE
- R = RADIUS
- L = ARC LENGTH
- Δ = DELTA (CENTRAL ANGLE)
- CH = CHORD DISTANCE
- CB = CHORD BEARING
- N.D. = NUMBERS
- N. = NORTHING (STATE PLANE COORDINATES)
- E. = EASTING
- Q = CENTERLINE OF RIGHT OF WAY
- D.R.B. = DRAINAGE RECORDS BOOK OF MARION COUNTY
- D.R.A. = DRAINAGE RETENTION AREA
- LB = LICENSE BUSINESS
- LS = LAND SURVEYOR
- P.L.S. = PROFESSIONAL LAND SURVEYOR
- P.G. = PAGE
- P.B. = PLAT BOOK
- P.T. = POINT OF TANGENCY
- D.A.U.E. = DRAINAGE, ACCESS, AND UTILITY EASEMENT
- D.U.E. = DRAINAGE AND UTILITY EASEMENT
- A.E. = ACCESS EASEMENT
- D.E. = DRAINAGE EASEMENT
- U.E. = UTILITY EASEMENT
- AC = ACRES
- NR = NOT RADIAL
- .XXX = SQUARE FOOTAGE AREA
- = PERMANENT REFERENCE MONUMENT (P.R.M.) FOUND 4" X 4" CONCRETE MONUMENT (AS NOTED)
- = PERMANENT REFERENCE MONUMENT (P.R.M.) FOUND 5/8" IRON ROD & DISK (AS NOTED)
- ⊗ = PERMANENT CONTROL POINT (P.C.P.) SET NAIL & DISK (LB 8071)
- ⊙ = PERMANENT REFERENCE MONUMENT (P.R.M.) SET 5/8" IRON ROD & DISK (LB 8071)
- = PERMANENT CONTROL POINT (P.C.P.) FOUND NAIL & DISK (AS NOTED)

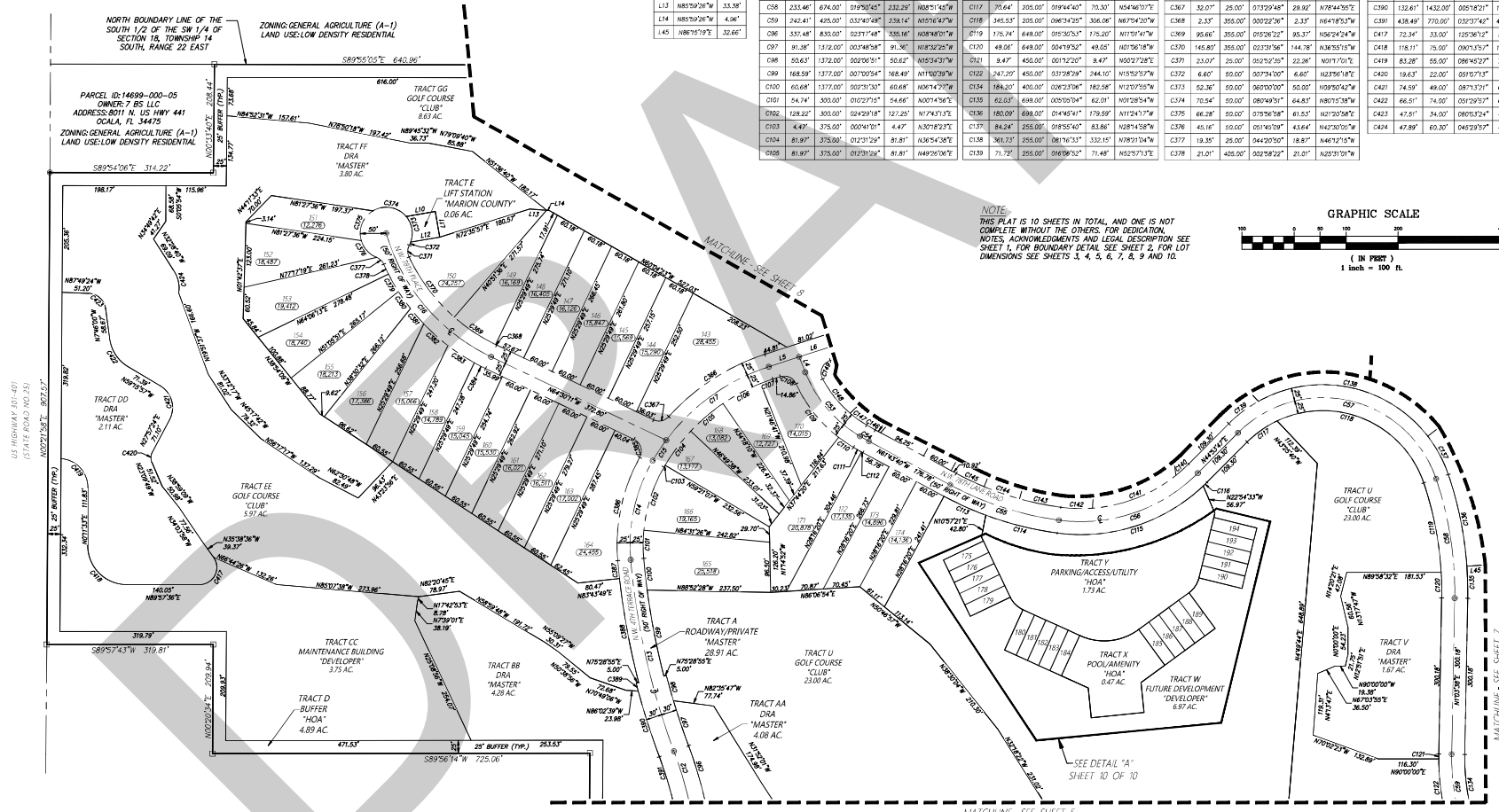
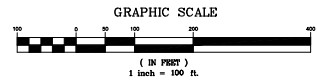
LINE TABLE

LINE	BEARING	LENGTH
L4	N21°40'59"W	31.84'
L5	N72°01'25"E	61.35'
L6	N72°01'25"E	64.48'
L10	N80°19'58"E	56.70'
L11	N97°54'24"W	50.00'
L12	N80°19'58"E	56.70'
L13	N82°52'26"W	33.38'
L14	N85°59'26"W	4.96'
L15	N86°15'19"E	32.65'

CURVE TABLE

CURVE	LENGTH	RADIUS	DELTA	CHORD	BEARING
C106	81.97'	375.00'	01°31'28"	81.81'	N61°57'39"E
C107	24.88'	375.00'	00°54'56"	24.88'	N70°01'22"E
C108	36.40'	25.00'	08°52'05"	33.27'	N66°16'02"W
C109	153.91'	275.00'	02°24'42"	151.67'	N58°24'34"W
C110	34.47'	275.00'	00°10'55"	34.45'	N55°01'07"W
C111	17.12'	325.00'	001°58'00"	17.12'	N62°43'55"W
C112	3.22'	325.00'	000°01'00"	3.22'	N51°33'07"W
C113	88.24'	645.00'	00°13'59"	88.17'	N65°40'39"W
C114	141.80'	645.00'	01°24'40"	141.51'	N75°58'29"W
C115	305.13'	342.00'	55°10'00"	285.11'	N72°07'08"E
C116	39.31'	342.00'	50°39'40"	39.32'	N54°43'42"E
C117	39.44'	305.00'	01°44'42"	39.33'	N54°49'01"E
C118	345.13'	205.00'	08°14'20"	336.08'	N67°24'20"W
C119	175.74'	645.00'	01°50'52"	175.20'	N71°01'41"W
C120	49.96'	645.00'	00°49'50"	49.65'	N67°40'27"E
C121	8.47'	455.00'	001°12'20"	8.47'	N52°02'28"E
C122	247.20'	455.00'	031°28'29"	244.10'	N15°29'57"W
C123	184.20'	405.00'	02°23'36"	182.58'	N12°07'55"W
C124	62.63'	695.00'	00°59'54"	62.01'	N10°28'54"W
C125	180.09'	695.00'	01°44'51"	178.89'	N11°24'17"W
C126	84.24'	255.00'	01°55'40"	83.86'	N28°14'58"E
C127	361.73'	255.00'	06°16'13"	333.15'	N78°11'04"W
C128	71.72'	255.00'	01°08'52"	71.48'	N52°13'37"E
C140	33.61'	292.00'	00°23'58"	33.50'	N48°01'48"E
C141	174.97'	292.00'	03°49'56"	172.36'	N69°24'41"E
C142	61.41'	292.00'	01°13'00"	61.30'	N89°04'49"W
C143	80.59'	590.00'	001°49'34"	80.53'	N78°24'32"W
C144	73.31'	590.00'	001°01'11"	73.29'	N70°59'50"W
C145	58.17'	590.00'	00°44'45"	58.14'	N64°38'02"W
C146	18.94'	478.00'	002°17'05"	18.94'	N63°05'07"W
C147	39.12'	225.00'	00°35'18"	39.07'	N54°27'45"W
C148	84.85'	225.00'	021°36'23"	84.35'	N38°40'42"W
C149	43.59'	25.00'	08°53'58"	38.27'	N27°04'36"E
C149	225.70'	425.00'	00°39'13"	220.16'	N57°09'47"E
C150	32.07'	25.00'	01°59'48"	29.90'	N78°44'42"E
C151	355.00'	355.00'	00°22'00"	2.35'	N61°58'07"W
C152	95.66'	355.00'	01°29'23"	95.37'	N56°24'24"W
C153	145.80'	355.00'	02°13'56"	144.78'	N46°52'51"W
C154	23.00'	25.00'	02°32'10"	22.36'	N01°17'01"E
C155	6.60'	50.00'	001°34'00"	6.60'	N23°56'18"E
C156	32.07'	50.00'	001°00'00"	50.00'	N09°50'42"W
C157	70.54'	50.00'	08°49'51"	64.83'	N01°23'58"E
C158	66.28'	50.00'	01°56'16"	61.53'	N01°20'58"E
C159	45.16'	50.00'	01°40'20"	43.64'	N42°10'30"E
C160	13.35'	25.00'	04°20'00"	13.64'	N47°12'12"E
C161	21.01'	405.00'	002°58'22"	21.01'	N25°31'01"W

NOTE: THIS PLAT IS 10 SHEETS IN TOTAL AND ONE IS NOT COMPLETE WITHOUT THE OTHERS. FOR REDUCTION NOTES, ACKNOWLEDGMENTS AND LEGAL DESCRIPTION SEE SHEET 1, FOR BOUNDARY DETAIL SEE SHEET 2, FOR LOT DIMENSIONS SEE SHEETS 3, 4, 5, 6, 7, 8, 9 AND 10.



PREPARED BY: JCH CONSULTING GROUP, INC. 426 SW 15TH STREET, Ocala, Florida 34471

MATCHLINE - SEE SHEET 7

MATCHLINE - SEE SHEET 5



JCH
 CONSULTING GROUP, INC.
 LAND DEVELOPMENT SURVEYING & MAPPING
 PLANNING - ENVIRONMENTAL - G.I.S.
 CERTIFICATE OF AUTHORIZATION NO. 12887
 CHRISTOPHER J. HOWSON P.S.M., C.E.M., L.S. 13433
 604 W. VENUE ROAD, OCALA, FLORIDA 34701
 PHONE: 352-835-1342 www.jchmg.com

IRONCREST PHASE 1

(A PLANNED UNIT DEVELOPMENT)

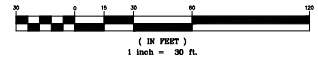
A REPLAT OF A PORTION OF ALDERMAN ESTATE, PLAT BOOK A, PAGE 122, PUBLIC RECORDS OF MARION COUNTY, FLORIDA A PORTION OF SECTION 17, 18, 19 AND 20, TOWNSHIP 14 SOUTH, RANGE 22 EAST MARION COUNTY, FLORIDA

PLAT BOOK _____, PAGE _____
 SHEET 10 OF 10

NOTE:
 THIS PLAT IS 10 SHEETS IN TOTAL, AND ONE IS NOT COMPLETE WITHOUT THE OTHERS. FOR DEDICATION, NOTES, ACKNOWLEDGMENTS AND LEGAL DESCRIPTION SEE SHEET 1. FOR BOUNDARY DETAIL SEE SHEET 2. FOR LOT DIMENSIONS SEE SHEETS 3, 4, 5, 6, 7, 8, 9 AND 10.



GRAPHIC SCALE



- LEGEND UNLESS OTHERWISE NOTED
- = NOT TO SCALE
 - R = RADIUS
 - L = ARC LENGTH
 - Δ = DELTA (CENTRAL ANGLE)
 - CH = CHORD DISTANCE
 - CB = CHORD BEARING
 - NO. = NUMBER
 - N. = NORTHING (STATE PLANE COORDINATES)
 - E. = EASTING (STATE PLANE COORDINATES)
 - C. = CENTERLINE OF RIGHT OF WAY
 - O.R.B. = OFFICIAL RECORDS BOOK OF MARION COUNTY
 - D.R.A. = DRAINAGE RETENTION AREA
 - LB = LICENSE BUSINESS
 - LS = LAND SURVEYOR
 - PLS = PROFESSIONAL LAND SURVEYOR
 - PG. = PAGE
 - P.B. = PLAT BOOK
 - P.T. = POINT OF TANGENCY
 - D.A.U.E. = DRAINAGE, ACCESS, AND UTILITY EASEMENT
 - D.U.E. = DRAINAGE AND UTILITY EASEMENT
 - A.E. = ACCESS EASEMENT
 - D.E. = DRAINAGE EASEMENT
 - U.E. = UTILITY EASEMENT
 - AC. = ACRES
 - (NR) = NOT RADIAL
 - (XXXX) = SQUARE FOOTAGE AREA
 - = PERMANENT REFERENCE MONUMENT (P.R.M.) FOUND 4" X 4" CONCRETE MONUMENT (AS NOTED)
 - * = PERMANENT REFERENCE MONUMENT (P.R.M.) FOUND 5/8" IRON ROD & DISK (AS NOTED)
 - ⊙ = PERMANENT CONTROL POINT (P.C.P.) SET NAIL & DISK (LB 8071)
 - ⊙ = PERMANENT REFERENCE MONUMENT (P.R.M.) SET 5/8" IRON ROD & DISK (LB 8071)
 - ⊙ = PERMANENT CONTROL POINT (P.C.P.) FOUND NAIL & DISK (AS NOTED)

CURVE TABLE				
CURVE	LENGTH	RADIUS	DELTA	CHORD BEARING
C55	221.05'	615.00'	02°03'33"	218.85' N72°01'39"W
C56	282.02'	317.00'	05°46'54"	281.81' N71°17'14"E
C113	88.24'	640.00'	00°53'59"	88.17' N63°47'30"W
C114	141.37'	640.00'	01°24'42"	141.35' N75°58'59"W
C115	355.15'	542.00'	08°17'02"	295.11' N72°51'58"E
C116	9.87'	542.00'	09°13'24"	9.87' N45°13'45"E
C140	37.61'	292.00'	04°31'56"	37.60' N48°50'46"E
C141	174.89'	292.00'	03°12'56"	172.86' N68°27'43"E
C142	61.41'	292.00'	01°25'00"	61.30' N82°20'49"W
C143	80.59'	595.00'	00°49'24"	80.55' N78°43'32"W
C144	72.31'	595.00'	00°21'21"	72.27' N70°59'55"W
C145	59.17'	595.00'	00°54'45"	59.14' N64°38'02"W
C425	34.91'	50.00'	04°00'00"	34.20' N45°11'56"W
C426	116.40'	110.00'	06°21'29"	111.04' N84°59'17"E
C427	34.91'	50.00'	04°00'00"	34.20' N33°50'28"E

