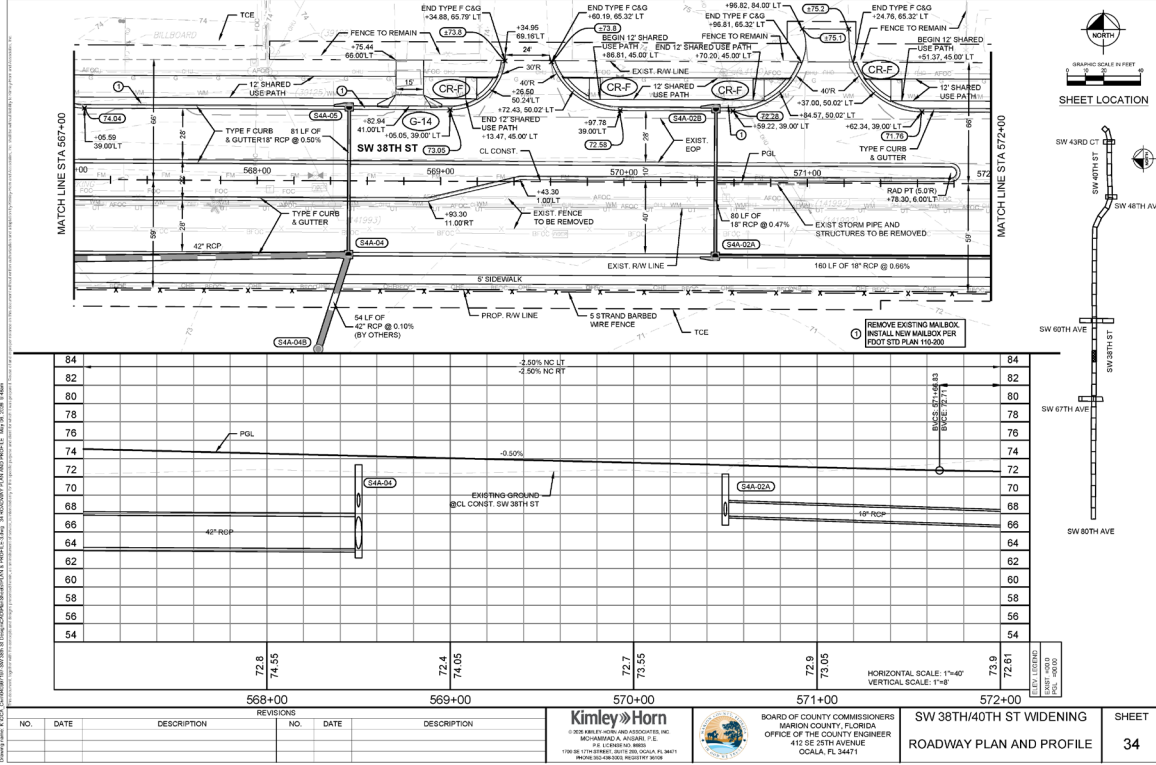
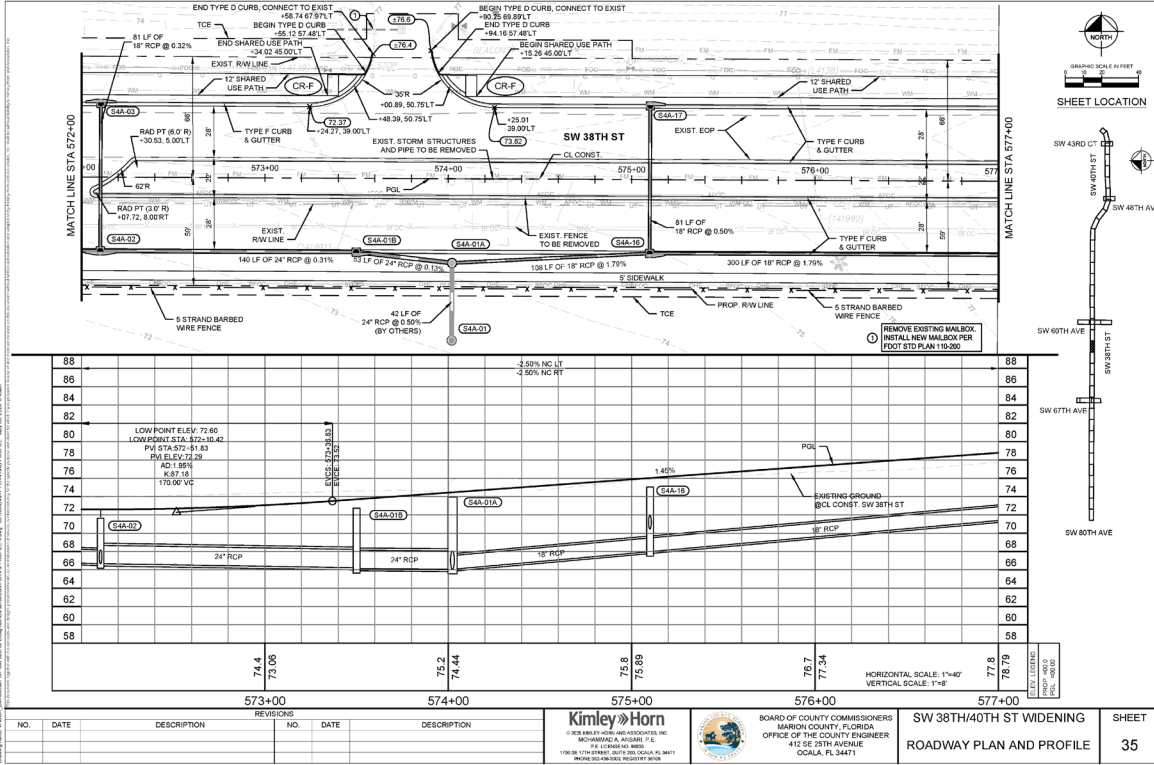


EXHIBIT "11"

(County's Northeast Stormwater Conveyance System Design Plans)



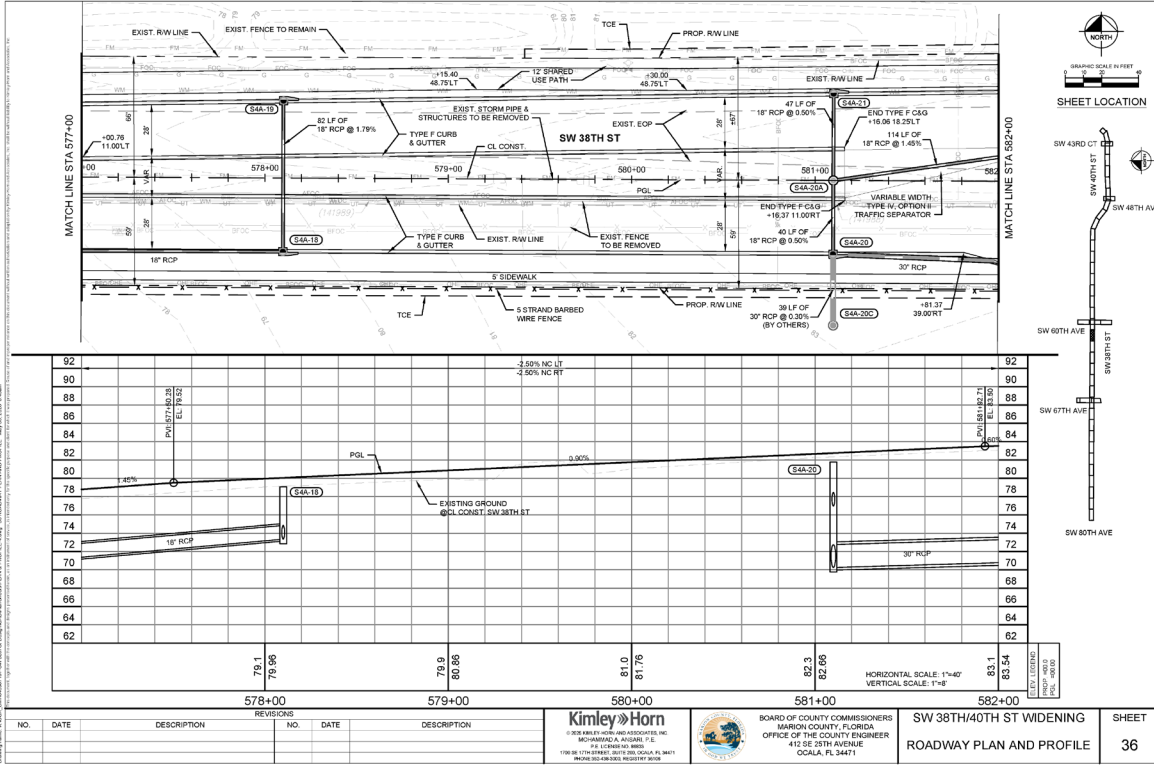


REVISIONS	
NO.	DATE

Kimley-Horn
 5100 WEST WINDY HILL ROAD, SUITE 200
 BOCA RATON, FLORIDA 33433
 PHONE: (561) 991-1100
 WWW.KIMLEY-HORN.COM

BOARD OF COUNTY COMMISSIONERS
 MARION COUNTY, FLORIDA
 OFFICE OF THE COUNTY ENGINEER
 412 E.E. 25TH AVENUE
 Ocala, FL 34471

SW 38TH/40TH ST WIDENING ROADWAY PLAN AND PROFILE	SHEET 35
--	-------------



NO.		DATE		DESCRIPTION	

Kimley-Horn
 5100 AMER. EXP. INC. RD. SUITE 100
 MOHAWK A. ARLING, FL. E.
 P.O. BOX 1000
 1700 SW 17TH STREET SUITE 200, Ocala, FL 32067
 PHONE: 352-237-1111



BOARD OF COUNTY COMMISSIONERS
 MARION COUNTY, FLORIDA
 OFFICE OF THE COUNTY ENGINEER
 412 SE 25TH AVENUE
 Ocala, FL 32471

SW 38TH/40TH ST WIDENING	SHEET 36
ROADWAY PLAN AND PROFILE	

DRA-4A (BY OTHERS)				EXISTING DRA NORTH (SW 60TH AVE)				DRA-6A					
STRUCTURE TABLE		STRUCTURE TABLE		STRUCTURE TABLE		STRUCTURE TABLE		STRUCTURE TABLE					
NAME	DETAILS	NAME	DETAILS	NAME	DETAILS	NAME	DETAILS	NAME	DETAILS				
S4A-30	P-6 INLET STD PLANS 425-010 & 425-021 STA 594+71.69,37.75 RT EOP: 85.77 INV OUT: 81.57 18" N	S4A-45	P-6 INLET STD PLANS 425-010 & 425-021 STA 609+00.00,36.69 RT EOP: 81.17 INV IN: 74.16 18" N INV IN: 76.62 18" W INV OUT: 74.16 24" S	S2-01	P-6 INLET STD PLANS 425-010 & 425-021 STA 594+02.11,35.69 LT EOP: 82.29 INV IN: 76.13 24" S	S2-08A	P-6 INLET STD PLANS 425-010 & 425-021 STA 594+00.00,58.25 RT EOP: 83.29 INV OUT: 79.09 18" S	S6A-01	MITERED END SECTION STD PLAN 430-021 STA 631+53.57,121.39 LT OUTFALL TO DRA 6A INV IN: 73.00 36" SW				
S4A-31	P-6 INLET STD PLANS 425-010 & 425-021 STA 594+57.27,47.60 LT EOP: 86.09 INV IN: 79.02 18" E INV OUT: 79.02 24" W	S4A-46	P-6 INLET STD PLANS 425-010 & 425-021 STA 70+75.00,36.25 LT EOP: 79.17 INV IN: 74.68 18" N INV OUT: 74.88 18" E	S2-02	P-6 INLET STD PLANS 425-010 & 425-021 STA 63+01.50,50.25 LT EOP: 82.30 INV IN: 76.96 18" S INV IN: 76.96 18" E INV OUT: 76.96 24" N	S2-08B	P-6 INLET STD PLANS 425-010 & 425-021 STA 58+29.24,58.25 RT EOP: 82.50 INV IN: 78.40 18" S INV OUT: 78.40 18" N	S6A-02	P-6 INLET STD PLANS 425-010 & 425-021 STA 533+75.63,37.75 LT EOP: 84.46 INV IN: 78.50 18" SW INV IN: 78.50 18" SE INV OUT: 78.50 18" NW				
S4A-31A	P-6 INLET STD PLANS 425-010 & 425-021 STA 594+71.69,45.60 LT EOP: 86.69 INV IN: 79.36 18" E INV IN: 81.14 18" S INV OUT: 79.36 18" W	S4A-46A	TYPE C DBI STD PLANS 425-001 & 425-052 STA 550+48.68,410.41 LT GRATE: 78.50 INV OUT: 78.00 18" S	S2-03	P-6 INLET STD PLANS 425-010 & 425-021 STA 62+50.00,50.25 LT EOP: 82.51 INV IN: 77.08 18" S INV OUT: 77.08 18" N	S2-09	P-6 INLET STD PLANS 425-010 & 425-021 STA 57+46.00,58.25 RT EOP: 83.11 INV OUT: 78.91 18" N	S6A-03	P-6 INLET STD PLANS 425-010 & 425-021 STA 533+75.63,37.75 RT EOP: 84.46 INV OUT: 80.26 18" NE				
S4A-32	P-6 INLET STD PLANS 425-010 & 425-021 STA 599+00.00,37.75 RT EOP: 87.86 INV OUT: 83.76 18" N	S4A-47	P-6 INLET STD PLANS 425-010 & 425-021 STA 70+75.00,36.25 RT EOP: 79.17 INV IN: 74.68 18" S INV OUT: 74.68 18" S	S2-04	P-6 INLET STD PLANS 425-010 & 425-021 STA 62+10.00,50.25 LT EOP: 82.75 INV IN: 77.19 18" S INV OUT: 77.19 18" N	S2-10	ADJUST EXIST. INLET TOP TO FINISHED GRADE STA 85+02.25,39.25 LT EOP: 82.53 INV IN: 78.17 18" E	S6A-04	P-6 INLET STD PLANS 425-010 & 425-021 STA 632+45.00,8.48 LT EOP: 85.85 INV OUT: 81.75 18" NW				
S4A-33	P-6 INLET STD PLANS 425-010 & 425-021 STA 599+00.00,39.87 LT EOP: 89.49 INV IN: 83.37 18" S INV OUT: 83.37 18" W	ST-03	MITERED END SECTION STD PLAN 430-021 STA 563+84.66,71.40 LT SIDE DRAIN INV OUT: 74.82 18" E	S2-05	P-6 INLET STD PLANS 425-010 & 425-021 STA 61+45.00,50.25 LT EOP: 82.97 INV IN: 77.31 18" S INV OUT: 77.31 18" N	S2-11	P-6 INLET STD PLANS 425-010 & 425-021 STA 56+02.25,43.61 RT EOP: 82.26 INV OUT: 78.55 18" W	S6A-04A	J-5 INLET (6" DIA) STD PLANS 425-010 & 425-021 STA 631+50.00,9.25 LT EOP: 85.86 INV IN: 81.27 18" SE INV IN: 81.75 18" NW INV IN: 73.31 36" SW INV OUT: 73.31 36" NE				
S4A-42	P-6 INLET STD PLANS 425-010 & 425-021 STA 65+38.00,44.98 LT EOP: 83.40 INV OUT: 78.26 18" E	ST-04	MITERED END SECTION STD PLAN 430-021 STA 554+48.52,64.35 LT SIDE DRAIN INV IN: 73.60 18" W	S2-06	P-6 INLET STD PLANS 425-010 & 425-021 STA 61+40.00,50.25 LT EOP: 83.27 INV IN: 77.42 18" S INV OUT: 77.42 18" N	S2-06	P-6 INLET STD PLANS 425-010 & 425-021 STA 56+02.25,43.61 RT EOP: 82.26 INV OUT: 78.55 18" W	S6A-04B	J-8 MANHOLE (6" DIA) STD PLANS 425-001 & 425-010 STA 631+50.00,42.50 LT RIM: 87.75 INV IN: 77.36 18" SE INV IN: 73.22 36" SW INV OUT: 73.22 36" NE				
S4A-43	P-6 INLET STD PLANS 425-010 & 425-021 STA 65+16.00,35.77 RT EOP: 83.36 INV IN: 78.84 18" W INV OUT: 78.84 18" N			S2-07	P-6 INLET STD PLANS 425-010 & 425-021 STA 58+49.24,39.25 LT EOP: 83.09 INV IN: 78.05 18" E INV OUT: 78.05 18" N	S2-07	P-6 INLET STD PLANS 425-010 & 425-021 STA 58+49.24,39.25 LT EOP: 83.09 INV IN: 78.05 18" E INV OUT: 78.05 18" N	S6A-04C	P-6 INLET STD PLANS 425-010 & 425-021 STA 604+50.00,9.25 LT EOP: 87.16 INV OUT: 82.96 18" SE				
S4A-44	P-6 INLET STD PLANS 425-010 & 425-021 STA 69+50.00,36.18 LT EOP: 91.18 INV OUT: 76.98 18" E			S2-08	P-6 INLET STD PLANS 425-010 & 425-021 STA 58+49.24,58.25 RT EOP: 82.87 INV IN: 78.30 18" S INV IN: 78.30 18" N INV OUT: 78.30 18" W	S2-08	P-6 INLET STD PLANS 425-010 & 425-021 STA 58+49.24,58.25 RT EOP: 82.87 INV IN: 78.30 18" S INV IN: 78.30 18" N INV OUT: 78.30 18" W	S6A-05	J-5 INLET (6" DIA) STD PLANS 425-010 & 425-021 STA 631+50.00,40.75 RT EOP: 85.41 INV IN: 73.45 36" NW INV IN: 81.31 18" SW INV OUT: 73.45 36" NE				
REVISIONS				REVISIONS									
NO.	DATE	DESCRIPTION	NO.	DATE	DESCRIPTION								

Kimley-Horn
 4100 BRIDGE LANE, SUITE 200, BOCA RATON, FL 33433
 STEPHEN A. KIMLEY, P.E.
 P.E. LICENSE NO. 12000
 1100 NE 17TH AVENUE, SUITE 200, DEERFIELD BEACH, FL 33442



BOARD OF COUNTY COMMISSIONERS
 MARION COUNTY, FLORIDA
 OFFICE OF THE COUNTY ENGINEER
 412 E.E. 25TH AVENUE
 OCALA, FL 34471

SW 38TH/40TH ST WIDENING
 SUMMARY OF DRAINAGE
 STRUCTURES

SHEET
 15