



---

# **Pinecastle Range Compatible Use Zones (RCZ)**

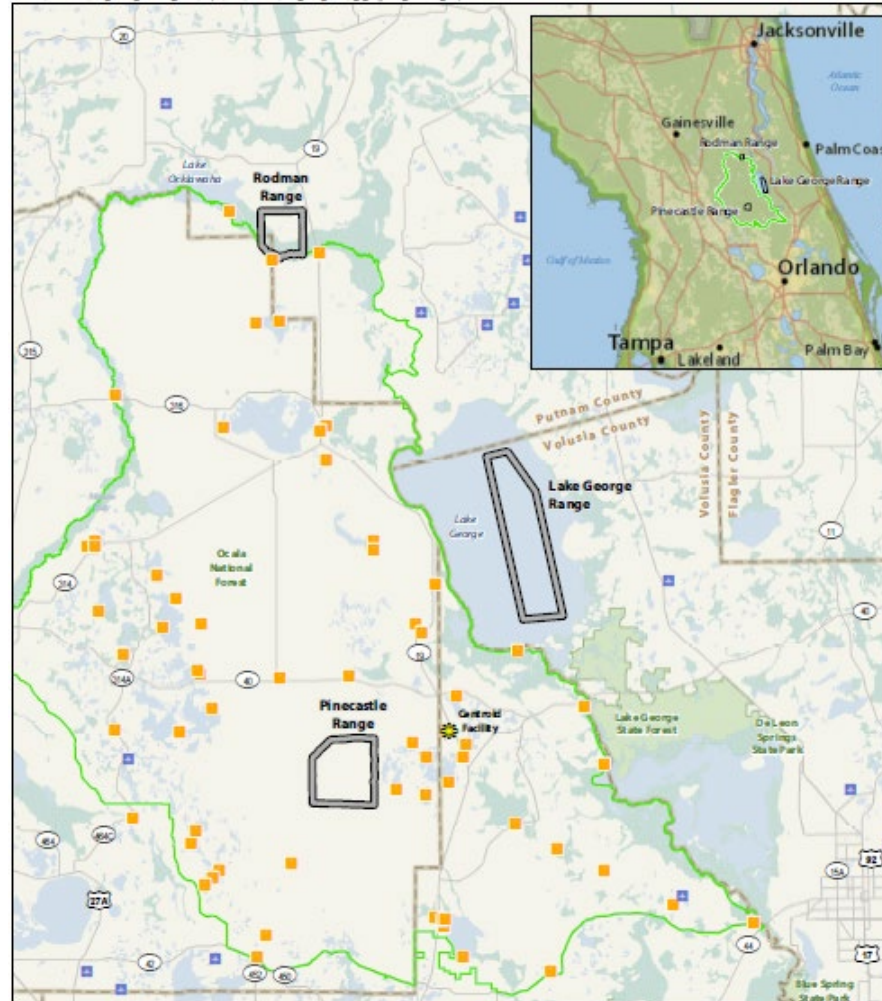
## ***Presentation to Marion County Planning and Zoning Commission***

**Mark McManus**  
NAS Jacksonville Community  
Planning Liaison Officer

**Donald Heaton**  
Pinecastle Range Complex  
Range Director



# Pinecastle Overview





# Rodman Range



The range comprises approximately 2,690 acres of Navy land acquired in 1961  
Focus is Strike Warfare with inert ordnance bombing targets and helicopter landing zones for combat search and rescue training

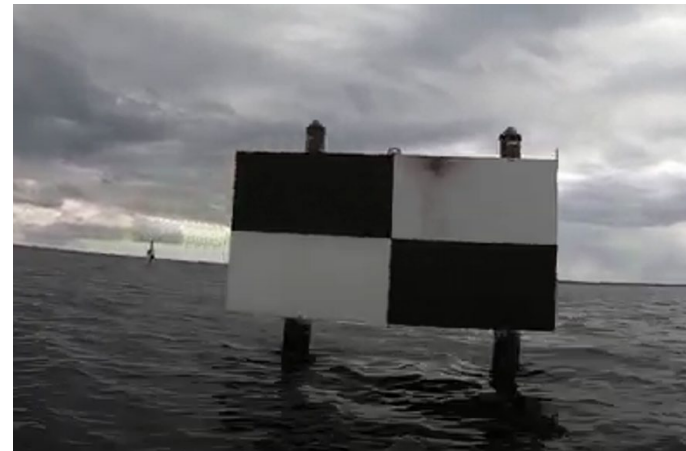
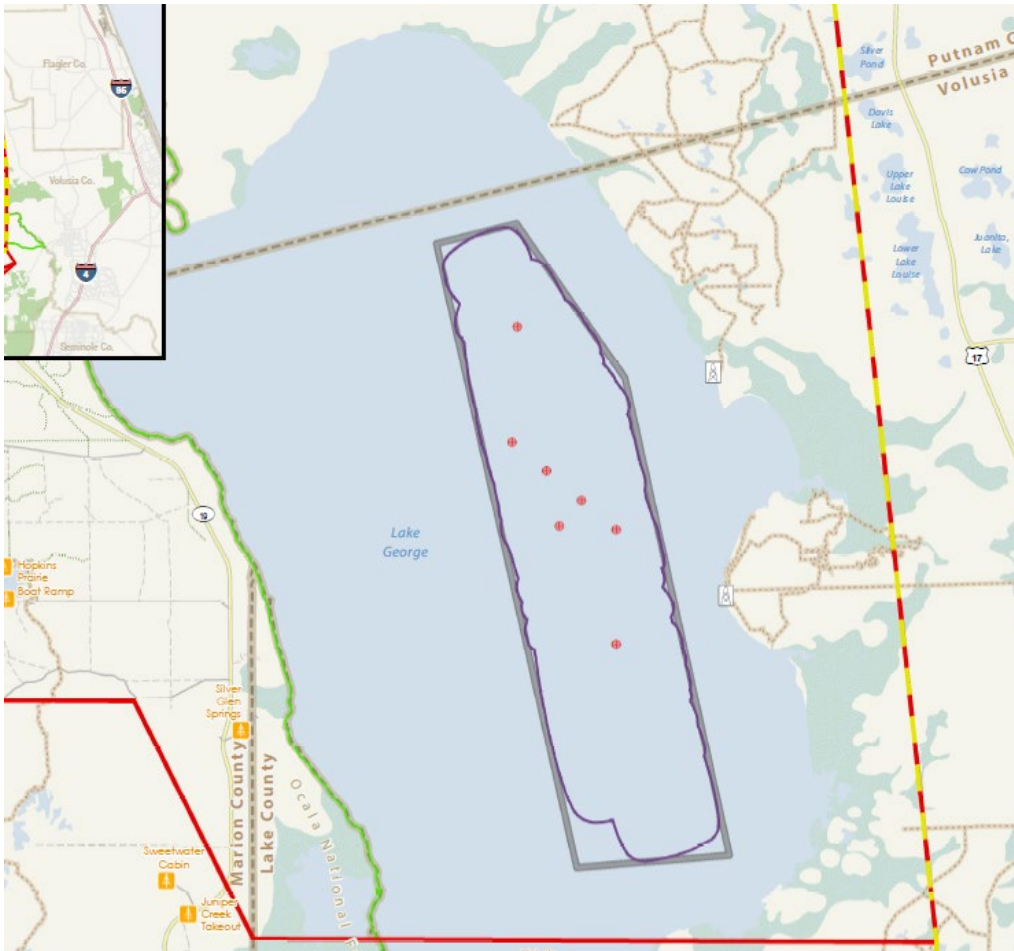




# Lake George Range



**Covers 8,960 acres of the lake's 46,000 acres. Managed by FDEP and SJRWMD with military operations authorized through a Sovereignty Submerged Land Letter of Consent which was renewed in 2014 indefinitely.**



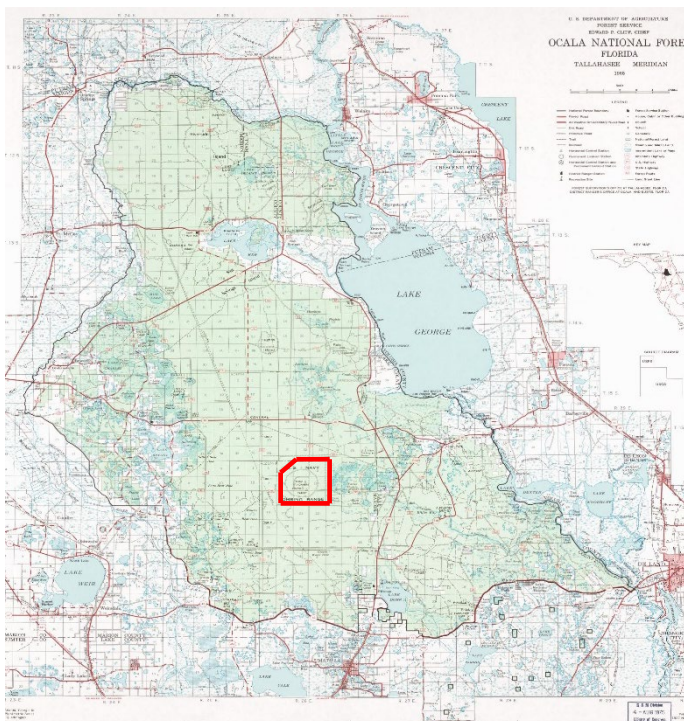
**Operations codified in 33 CFR § 334.520**



# Pinecastle Impact



**Supports strike warfare training by providing a realistic training environment for the delivery of air-to-ground munitions up to 2,000 lbs. of high explosive. Use of range is through Special Use Permit with USDA Forest Service (exp 2052)**

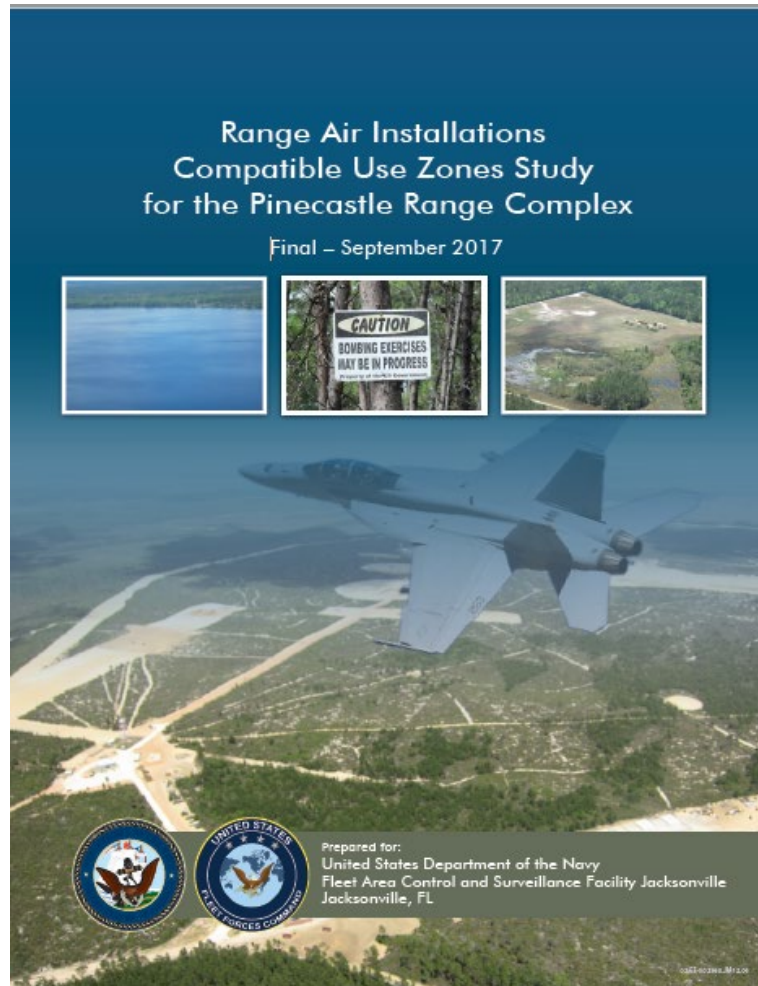




# Range Air Installations Compatible Use Zones (RAICUZ)



- The RAICUZ Program is to achieve compatibility between the existing and proposed land uses and airspace near air-to-ground ranges.
- The program's goal is to protect the health, safety, and welfare of those living near training ranges while preserving military operational capabilities.
- Identifies the Range Compatible Zones (RCZs)





# Recommended Compatible Use Guidelines



Land Use Classifications and Compatibility Guidelines in RCZs

Land Use	Land Use Compatibility with RCZs		
	RCZ-I	RCZ-II	RCZ-III
Single-Family Residential, Duplex, Mobile Homes			(3)
Multi-Family Residential, Transient Lodging			
Schools, Churches, and Libraries			
Hospitals and Nursing Homes			
Public Assembly, Auditoriums, Concert Halls			
Offices and Business Services			(2)
Commercial and Retail			(2)
Manufacturing			(2)
Utilities			
Playgrounds, Neighborhood Parks, and Outdoor Sports Arenas			(2)
Golf Courses, Riding Stables, and Water Recreation		(4)	(2)
Industrial, Warehouse, and Supplies			
Livestock, Farming, and Animal Breeding		(1)	(2)
Agriculture (Except Livestock), Mining, Forestry and Fishing		(1)	
Recreational Wilderness Areas		(2)	(2)

Notes:

This generalized land-use table provides an overview of recommended land uses.

Compatibility Conditions:

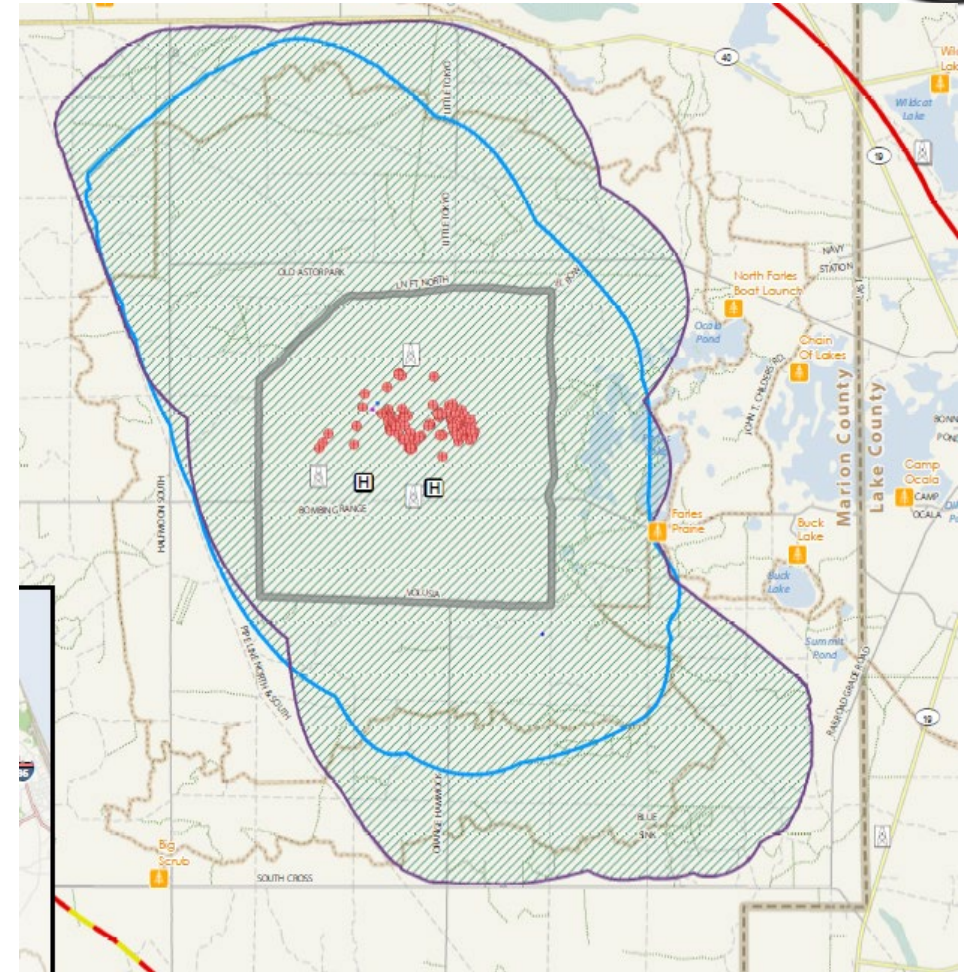
- (1) = RCZ-II is an area of armed overflight. Land uses that have the potential to attract people are not compatible.
- (2) = Incompatible when the training mission requires low altitude overflight (less than 500 feet).
- (3) = Suggested maximum density of RCZ-III is no more than 1-2 dwelling units per acre.
- (4) = Clubhouses, chapels, and other public assembly facilities are not compatible in RCZ-II.



# Range Compatibility Zone 1



- RCZ-I defines the area of the greatest potential safety hazard and designates the minimum range area needed to contain all ordnance delivered at the respective range.
- RCZ-I covers 21,740 acres outside of the Pinecastle Range boundary but inside the ONF and land use include Ag/Cropland, Forest, and Wetlands.
- ***Only RCZ1 in Marion County is at Pinecastle Impact and is inside ONF.***



***Pinecastle Impact Area***





# Range Compatibility Zone 2

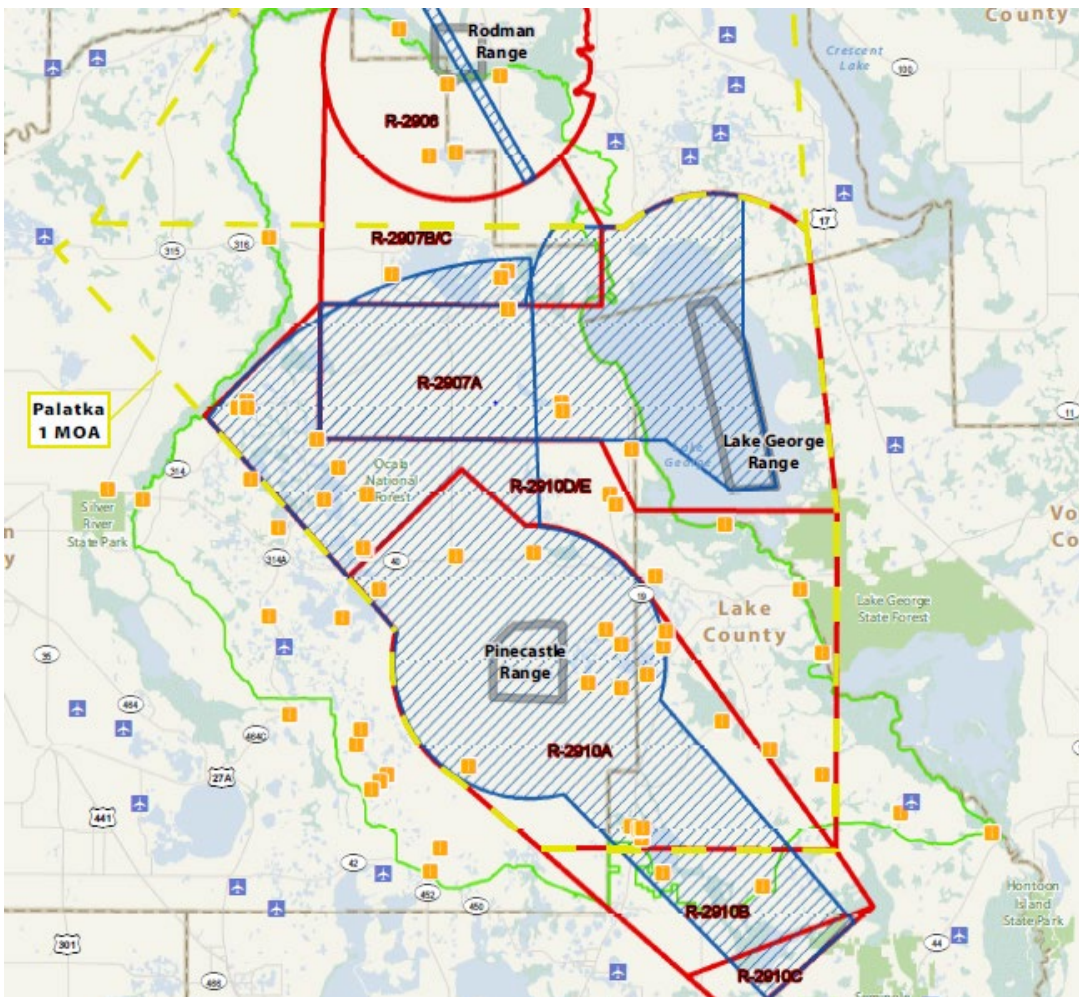
---



- **RCZ-II the area of over-flight when an aircraft with ordnance has weapons systems “armed”. This area could be impacted by ordnance, if inadvertently released.**
- **RCZ-II encompasses 141,311 acres in Marion County**
  - **124,209 acres are associated with Pinecastle Range**
  - **50,396 acres are associated with Lake George Range.**
- **The predominant land uses in RCZ-II in Marion County include Agricultural/Cropland, Forest, Wetlands.**



# Range Compatibility Zone 2



***In 2017 RCZ-II includes approx. 32 acres of land classified as Institutional; 1,043 acres of High Density Residential and 1,253 acres of Low Density Residential which is all considered incompatible.***



# Range Compatibility Zone 3

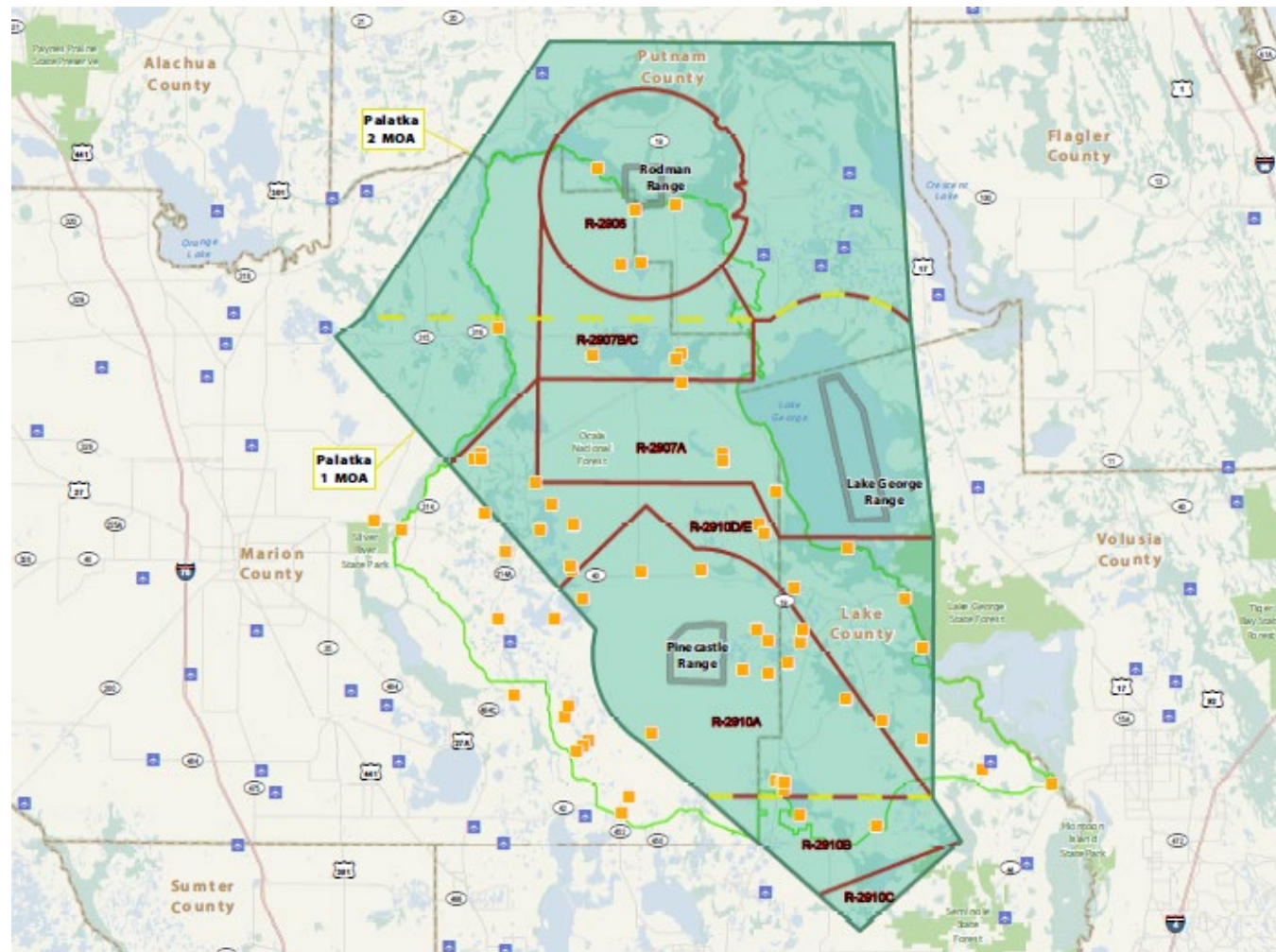
---



- **RCZ-III defines the airspace for maneuvering into and out of the target areas. RCZ-III is the area required to safely separate participating and non-participating aircraft and provide the range user with tactical maneuvering room.**
- **RCZ-III encompasses 136,224 acres in Marion County which is Ag/Cropland, Forest, Shrub/Brushland, and Wetlands**
- **166.5 acres is Institutional land (schools, churches, medical) is incompatible. 145 acres of golf course, parks, swimming beaches, marinas, & fairgrounds are not compatible w/ low-level flight (<500')**

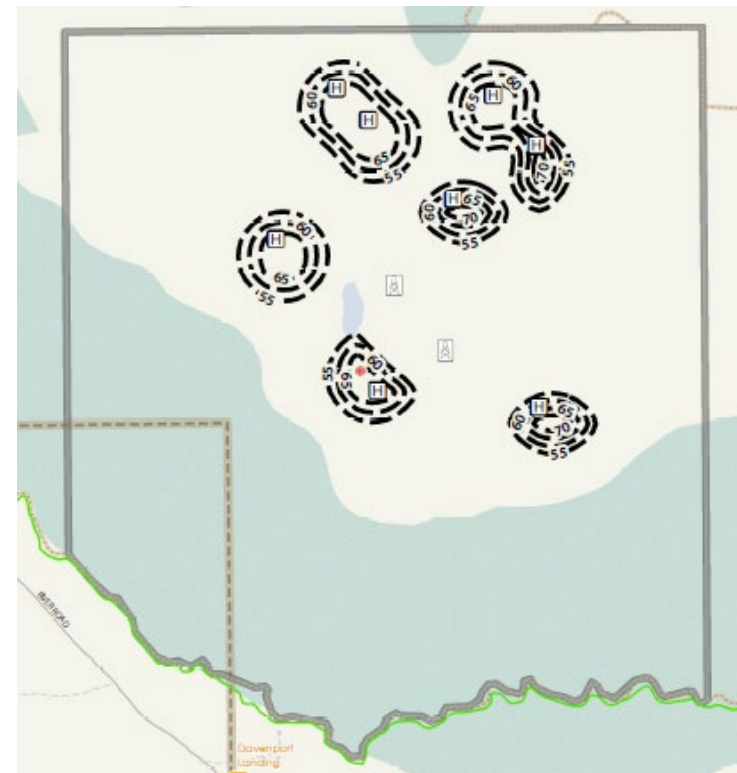
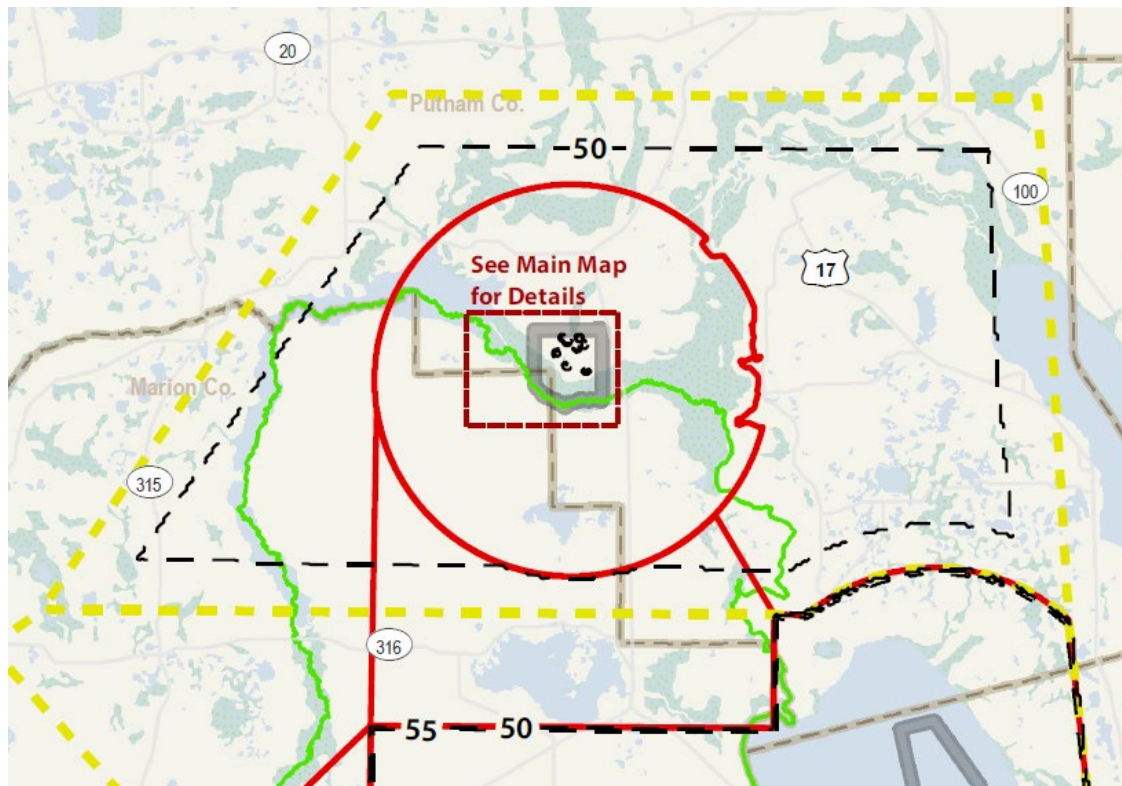


# Range Compatibility Zone 3





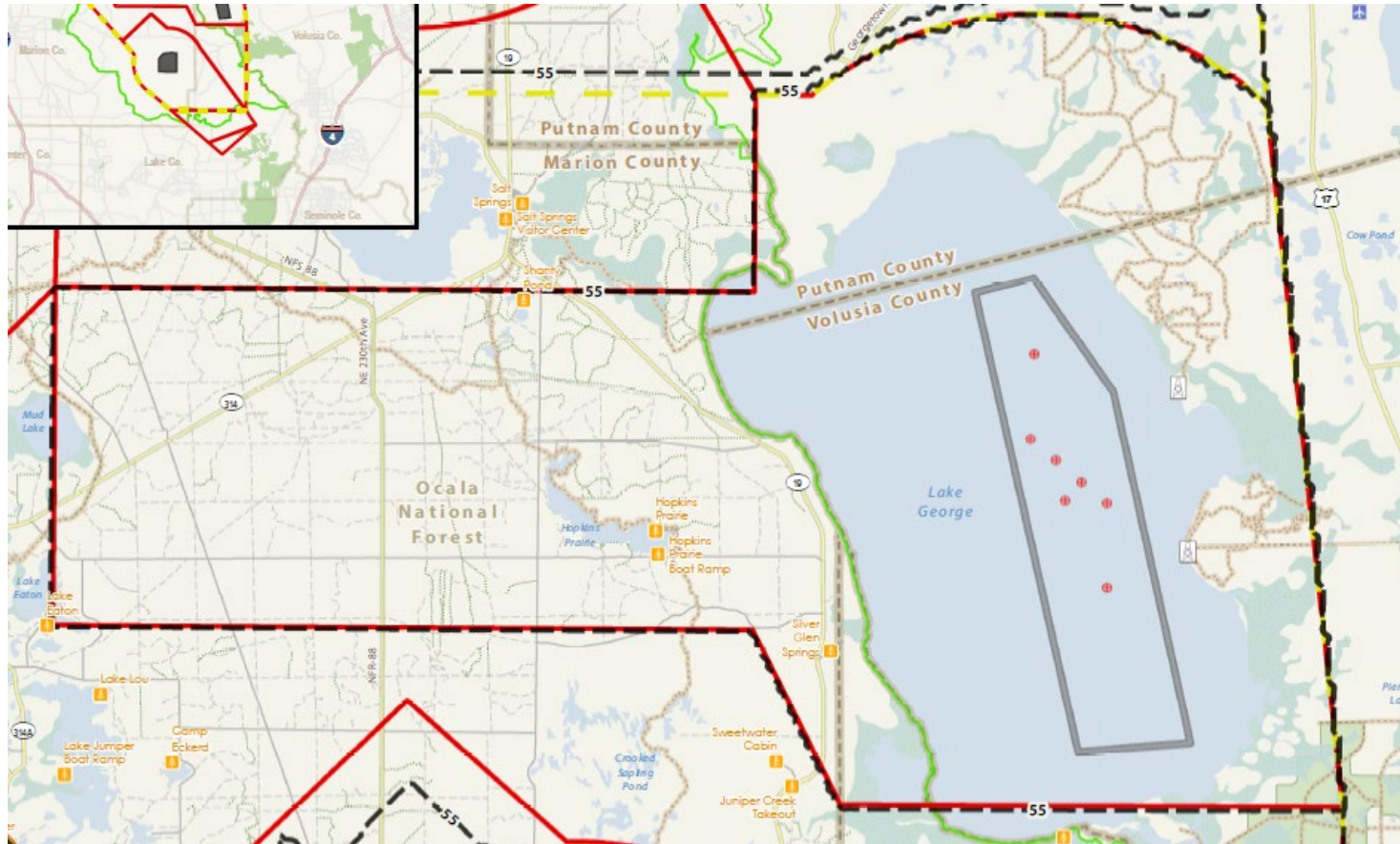
# Noise at Rodman



**Noise contours of 65 dBA DNL and higher does not reach Marion County.**



# Noise at Lake George

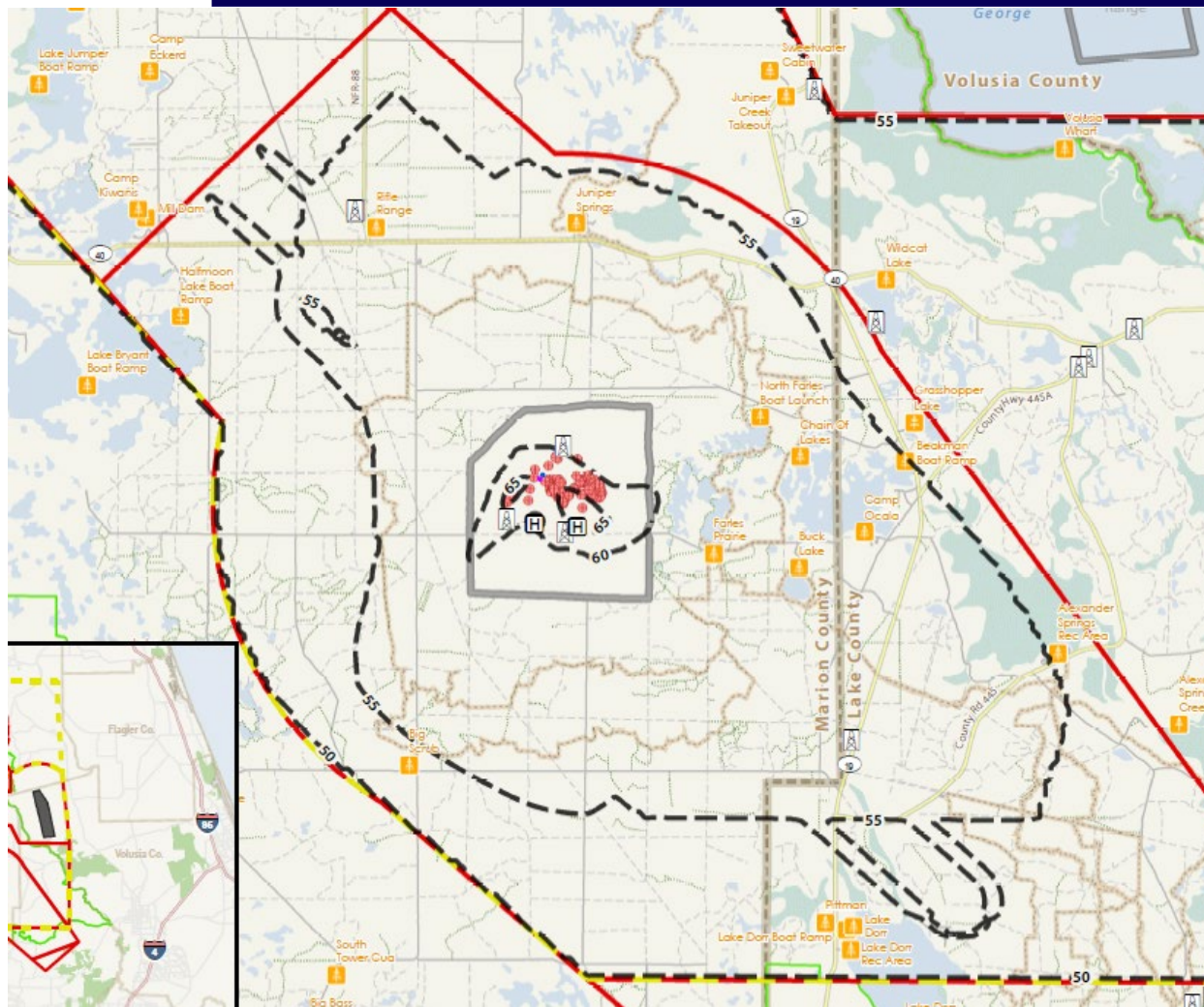


**Noise leaving Lake George Range is completely within Noise Zone 1 (<65 dBA).**

***“Individuals can hear noise but can also adapt to noise levels. Most land uses are compatible within Noise Zone 1.”***



# Noise at Pinecastle Impact



**Noise great than Noise Zone 1 is contained inside Pinecastle Impact boundary (>65 dBA).**

***“Individuals can hear noise but can also adapt to noise levels. Most land uses are compatible within Noise Zone 1.”***



# Questions?

