

March 21, 2024

PROJECT NAME: SELF STORAGE - OCALA

PROJECT NUMBER: 2023050138

APPLICATION: MAJOR SITE PLAN #30953

- 1 DEPARTMENT: ENGDRN - STORMWATER REVIEW  
REVIEW ITEM: 6.13.2.B(8) - Calculation & Plan Consistency  
STATUS OF REVIEW: INFO  
REMARKS: This criteria to be reviewed with resubmittal.
- 2 DEPARTMENT: ENGDRN - STORMWATER REVIEW  
REVIEW ITEM: 6.13.10.B - Copy of NPDES Permit or NOI  
STATUS OF REVIEW: INFO  
REMARKS: Please provide a copy of the NPDES permit or NOI prior to construction.
- 3 DEPARTMENT: ENGDRN - STORMWATER REVIEW  
REVIEW ITEM: Copy of District Permit (County Interest)  
STATUS OF REVIEW: INFO  
REMARKS: Please provide a copy of the District permit prior to construction.
- 4 DEPARTMENT: ENGDRN - STORMWATER REVIEW  
REVIEW ITEM: Additional Stormwater comments  
STATUS OF REVIEW: INFO  
REMARKS: (1) Any improvements within the FDOT ROW need to be coordinated directly with FDOT. (2) If you have questions or would like to discuss the stormwater review comments, please contact Kevin Vickers, PE at 352-671-8695 or kevin.vickers@marionfl.org.
- 5 DEPARTMENT: ENGTRF - TRAFFIC REVIEW  
REVIEW ITEM: Additional Traffic comments  
STATUS OF REVIEW: INFO  
REMARKS: 1/11/24 - The driveway connection to SR 35 will require permitting through FDOT.
- 6 DEPARTMENT: ENGIN - DEVELOPMENT REVIEW  
REVIEW ITEM: 2.12.4.K - List of approved waivers, their conditions, and the date of approval  
STATUS OF REVIEW: INFO  
REMARKS: 1/30/24 - add waivers if requested in the future
- 7 DEPARTMENT: ENGIN - DEVELOPMENT REVIEW  
REVIEW ITEM: Additional Development Review Comments  
STATUS OF REVIEW: INFO  
REMARKS: After approval, plans will be electronically stamped by the County. The applicant will receive an email indicating that approved plans are available for download and are located in the ePlans project Approved folder. For Development Review submittals, with the exception of Final Plats and Minor Site Plans, applicants are required to print, obtain required signatures, and sign and seal two 24"x 36" sets of the electronically stamped approved plan and deliver them to the Office of County Engineer, Development Review Section, located at 412 SE 25th Avenue Ocala, FL 34471. Upon receipt, a development order will be issued. Until such time as that development order is issued, the project does not have final approval and construction, if applicable, shall not commence. For plans requiring As-Builts, As-Builts and associated documentation shall be submitted on paper in accordance with current county requirements.

- 8 DEPARTMENT: UTIL - MARION COUNTY UTILITIES  
REVIEW ITEM: 6.14.4 - Water (potable) Capital Charges and Flow Rates - proposed use identified to calculate  
STATUS OF REVIEW: INFO  
REMARKS:
- 9 DEPARTMENT: UTIL - MARION COUNTY UTILITIES  
REVIEW ITEM: 6.14.5.C - All issued permits related to this project shall be submitted to MCU (DOT, ROW, misc)  
STATUS OF REVIEW: INFO  
REMARKS:
- 10 DEPARTMENT: UTIL - MARION COUNTY UTILITIES  
REVIEW ITEM: 6.14.8.A - Completion and Closeout - PLAN NOTE: As-builts  
STATUS OF REVIEW: INFO  
REMARKS: as-built requirements updated 4/13/23 - as-builts will be required before DEP clearance of sewer signed out by MCU. Bill of Sale for all utility assets to be conveyed to MCU prior to DEP Clearances.
- 11 DEPARTMENT: UTIL - MARION COUNTY UTILITIES  
REVIEW ITEM: 6.15.3 - Fire Protection/Fire Flow Capacity  
STATUS OF REVIEW: INFO  
REMARKS: defer to MCFR; public water available by MCU
- 12 DEPARTMENT: DOH - ENVIRONMENTAL HEALTH  
REVIEW ITEM: Additional Health comments  
STATUS OF REVIEW: INFO          REMARKS:
- 13 DEPARTMENT: FRMSH - FIRE MARSHAL REVIEW  
REVIEW ITEM: 6.18.5 - Access Control Box  
STATUS OF REVIEW: INFO  
REMARKS: Any commercial building which contains a fire sprinkler system and or fire alarm system must install an access control box. The access control box must be ordered on a specific form signed by MCFR to ensure the correct box is ordered for the jurisdiction. Please contact our office to obtain the form 352-291-8000.
- 14 DEPARTMENT: FRMSH - FIRE MARSHAL REVIEW  
REVIEW ITEM: NFPA 1 Chapter 11.10.1 - In Building Minimum Radio Signal Strength  
STATUS OF REVIEW: INFO  
REMARKS: All new buildings and buildings which conduct renovations increasing the total floor space by greater than 50 percent of the floor area must comply with NFPA 1 Chapter 11.10.1. NFPA 1 Chapter 11.10.1 provides for the AHJ to establish minimum standards for in building public safety radio communications. Please be aware that your building will be required to conduct a test for the minimum radio signal strength to determine coverage. If the minimum radio signal strength is deemed insufficient then a radio signal enhancement system must be installed and the building retested to ensure it meets the minimum criteria. Please plan for this early in your project and contact Marion County Fire Rescue with any questions 352-291-8000
- 15 DEPARTMENT: LUCURR - LAND USE CURRENT REVIEW  
REVIEW ITEM: 2.12.4.L(5)/5.4 - [Applicable Springs Protection Zone Listed?]  
STATUS OF REVIEW: INFO  
REMARKS: The subject parcel is within the Primary Springs Protection Zone.  
Please add note to cover page that indicates this.

16 DEPARTMENT: LSCAPE - LANDSCAPE DESIGN AND IRRIGATION

REVIEW ITEM: 6.8.11 - Landscape installation

STATUS OF REVIEW: INFO

REMARKS: Installation shall mean survival in perpetuity.

17 DEPARTMENT: ZONE - ZONING DEPARTMENT

REVIEW ITEM: 4.4.4 -Sign (provisions for advertising signage), if it is a multi occupancy complex like shopping centers they must submit a master sign plan.

STATUS OF REVIEW: INFO

REMARKS: Will there be signs?

18 DEPARTMENT: ENRAA - ACQ AGENT ENG ROW

REVIEW ITEM: Major Site Plan

STATUS OF REVIEW: INFO

REMARKS: \*\*IF APPLICABLE\*\*

Sec. 2.18.1.I - Show connections to other phases.

Sec.2.19.2.H – Legal Documents

Legal documents such as Declaration of Covenants and Restrictions, By-Laws, Articles of Incorporation, ordinances, resolutions, etc.

Sec. 6.3.1.B.1 – Required Right of Way Dedication (select as appropriate)

For Public Streets. "[All streets and rights-of-way shown on this plat or name specifically if less than all] are hereby dedicated for the use and benefit of the public."

Sec. 6.3.1.B.2 – Required Right of Way Dedication

For Non-Public Streets. "[All streets and rights-of-way shown on this plat or name specifically if less than all] are hereby dedicated privately to the [entity name]. All public authorities and their personnel providing services to the subdivision are granted an easement for access. The Board of County Commissioners of Marion County, Florida, shall have no responsibility, duty, or liability whatsoever regarding such streets. Marion County is granted an easement for emergency maintenance in the event of a local, state, or federal state of emergency wherein the declaration includes this subdivision or an emergency wherein the health, safety, or welfare of the public is deemed to be at risk."

Sec. 6.3.1.D.3 - Cross Access Easements

For Cross Access Easements. "All parallel access easements shown on this plat are hereby dedicated for the use and benefit of the public, and maintenance of said easements is the responsibility of [entity name]."

Sec. 6.3.1.C.1 - Utility Easements (select as appropriate)

"[All utility easements shown or noted or name specifically if less than all] are dedicated [private or to the public] for the construction, installation, maintenance, and operation of utilities by any utility provider."

Sec. 6.3.1.C.2 – Utility Easements

"[All utility tracts or identify each tract as appropriate] as shown are dedicated [private or to the public] for the construction and maintenance of such facilities."

Sec.6.3.1.D(c)(1)(2)(3) - Stormwater easements and facilities, select as appropriate:

1. "[All stormwater and drainage easements as shown or noted or name specifically if less than all] are dedicated [private or to the public] for the construction and maintenance of such facilities."

2. "[All stormwater management tracts or identify each tract as appropriate] as shown are dedicated [private or to the public] for the construction and maintenance of such facilities."

3. When any stormwater easement and/or management tract is not dedicated to the public or Marion County directly, the following statement shall be added to the dedication language: "Marion County is granted the right to perform emergency maintenance on the [stormwater easement and/or management tract, complete accordingly] in the event of a local, state, or federal state of emergency wherein the declaration includes this subdivision or an emergency wherein the health, safety, or welfare of the public is deemed to be at risk."

Sec.6.3.1.D(f) –

If a Conservation Easement is required the following shall be provided: "A conservation easement [as shown

or on tract and identify the tract, complete accordingly] is dedicated to [the Board of County Commissioners of Marion County, Florida or entity name, if not Marion County] for the purpose of preservation of [listed species, habitat, Karst feature and/or native vegetation, complete accordingly]."

- 19 DEPARTMENT: ENGDRN - STORMWATER REVIEW  
REVIEW ITEM: 2.12.8 - Topographical Contours  
STATUS OF REVIEW: NO  
REMARKS: LDC requires that one-foot contours extend 100 feet beyond the project boundary. A waiver may be pursued and staff would support the waiver in this case.
- 20 DEPARTMENT: ENGDRN - STORMWATER REVIEW  
REVIEW ITEM: 2.12.9/10 - Existing Drainage Right-of-Way/Easements  
STATUS OF REVIEW: NO  
REMARKS: The site survey does not show any drainage easements on the the property. General Note 4 on the cover sheet makes reference to vacating existing interior drainage easements. Please clarify.
- 21 DEPARTMENT: ENGDRN - STORMWATER REVIEW  
REVIEW ITEM: 2.12.13/14/15 - General Exhibits  
STATUS OF REVIEW: NO  
REMARKS: Please submit a USGS Quadrangle Map and National Wetland Inventory map. Please indicate the site location on each of these maps.
- 22 DEPARTMENT: ENGDRN - STORMWATER REVIEW  
REVIEW ITEM: 2.12.38 - Stormwater Maintenance Entity  
STATUS OF REVIEW: NO  
REMARKS: The Owner's certification on the cover sheet needs to be signed by the current owner of the property.
- 23 DEPARTMENT: ENGDRN - STORMWATER REVIEW  
REVIEW ITEM: 6.13.7 - Geotechnical Criteria  
STATUS OF REVIEW: NO  
REMARKS: (1) LDC requires that borings used for DRA design need to extend a minimum of 10' below the bottom of the proposed ponds. (2) Please show boring locations on the plans. (3) Percolation tests were performed at 3' deep. Based on the grading proposed, it appears that these tests were performed in soils that will be removed as part of the grading. Please clarify how these results are relevant to the finished grade bottom of the DRA.
- 24 DEPARTMENT: ENGDRN - STORMWATER REVIEW  
REVIEW ITEM: 6.13.2.B(1)/(2) - Runoff Analysis/ Tc Calculations  
STATUS OF REVIEW: NO  
REMARKS: See comment under "6.13.2.B(4) - Hydrologic Analysis"
- 25 DEPARTMENT: ENGDRN - STORMWATER REVIEW  
REVIEW ITEM: 6.13.2.A(3) - Retention/Detention Area Design Parameters  
STATUS OF REVIEW: NO  
REMARKS: (1) Please add DRA cross sections, to scale, along the width and length of each pond, showing the design high water elevation, estimated seasonal high-water elevation, pond top elevation, pond bottom elevation, side slope steepness, maintenance berm width, sod stabilization of the pond side slopes, and appropriate vegetative cover on the pond bottom. A typical cross section can be used instead when sufficient information is shown on the plan view which minimally includes pond width and length call outs as measured at the pond's top and bottom elevations (2) Please add the following note with the pond cross section: "A minimum of three feet of unconsolidated soil material shall be provided between the surface of

any limestone bedrock and the bottom and sides of any stormwater facility." (3) Add coordinates or dimensions to the major pond components (changes in alignment, corners, etc) for constructability.

- 26 DEPARTMENT: ENGDRN - STORMWATER REVIEW  
REVIEW ITEM: 6.13.3 - Type of Stormwater Facility Criteria  
STATUS OF REVIEW: NO  
REMARKS: Please label the berm width around the perimeter of the DRA. Retention/detention areas serving commercial lots shall be designed with a minimum berm width of 5 feet stabilized at a maximum of six percent grade maximum around the entire perimeter of the facility.
- 27 DEPARTMENT: ENGDRN - STORMWATER REVIEW  
REVIEW ITEM: 6.13.4 - Stormwater Quantity Criteria  
STATUS OF REVIEW: NO  
REMARKS: See comment under "6.13.2.B(4) - Hydrologic Analysis"
- 28 DEPARTMENT: ENGDRN - STORMWATER REVIEW  
REVIEW ITEM: 6.13.2.B(4) - Hydrologic Analysis  
STATUS OF REVIEW: NO  
REMARKS: (1) We do not currently allow the FDOT Rainfall depth to be used for the 100-year, 24-hour or 25-year, 24-hour design storms. The SJRWMD isohyetal maps needs to be used and in this area the 25-year 24-hour depth = 8.3" and 100-year 24-hour depth = 11.5" (2) Please clarify which category description the DRA area was included in for the runoff coefficient calculations. We typically see these areas categorized with impervious or a separate category with a CN = 100. (3) Please submit a DRA recovery analysis from the 100-year, 24-hour storm for review. Dry DRAs are required to fully recover within 14 days after the design storm. If they do not, the DRA must be designed to hold an additional design storm post-pre volume.
- 29 DEPARTMENT: ENGDRN - STORMWATER REVIEW  
REVIEW ITEM: 6.13.4.C - Discharge Conditions  
STATUS OF REVIEW: NO  
REMARKS: See comment under "6.13.2.B(4) - Hydrologic Analysis"
- 30 DEPARTMENT: ENGDRN - STORMWATER REVIEW  
REVIEW ITEM: 6.13.2.B(6) - Freeboard  
STATUS OF REVIEW: NO  
REMARKS: See comment under "6.13.2.B(4) - Hydrologic Analysis"
- 31 DEPARTMENT: ENGDRN - STORMWATER REVIEW  
REVIEW ITEM: 6.13.4.D - Recovery Analysis  
STATUS OF REVIEW: NO  
REMARKS: See comment under "6.13.2.B(4) - Hydrologic Analysis"
- 32 DEPARTMENT: ENGDRN - STORMWATER REVIEW  
REVIEW ITEM: 6.13.2.A(8) - Finish Floor Elevation Criteria  
STATUS OF REVIEW: NO  
REMARKS: Minimum finished floor elevation is required to be a minimum of one foot higher than the one percent (100-year) flood elevation (or corresponding stage in the DRA). Engineer to confirm that this criteria is met.
- 33 DEPARTMENT: ENGDRN - STORMWATER REVIEW  
REVIEW ITEM: 6.13.6 - Stormwater Quality Criteria  
STATUS OF REVIEW: NO  
REMARKS: Please indicate the proposed DRA stabilization method on the DRA cross section. DRAs less

than 4' deep require the side slopes to be sodded and the bottom to be seeded and mulched at minimum. DRA bottoms may also be sodded.

- 34 DEPARTMENT: ENGDRN - STORMWATER REVIEW  
REVIEW ITEM: 6.13.6.C - Best Management Practices  
STATUS OF REVIEW: NO  
REMARKS: Please add a karst repair detail to the plan set. If you need an example, please contact the reviewer.
- 35 DEPARTMENT: ENGDRN - STORMWATER REVIEW  
REVIEW ITEM: 6.13.8 - Stormwater Conveyance Criteria  
STATUS OF REVIEW: NO  
REMARKS: See comment under "6.13.2.B(5) - Hydraulic Analysis"
- 36 DEPARTMENT: ENGDRN - STORMWATER REVIEW  
REVIEW ITEM: 6.13.2.B(5) - Hydraulic Analysis  
STATUS OF REVIEW: NO  
REMARKS: Please submit HGL calculations for the conveyance system for review.
- 37 DEPARTMENT: ENGDRN - STORMWATER REVIEW  
REVIEW ITEM: 6.13.2.A(6) - Existing/Proposed Stormwater Pipes  
STATUS OF REVIEW: NO  
REMARKS: Please label pipe material type on the plans.
- 38 DEPARTMENT: ENGDRN - STORMWATER REVIEW  
REVIEW ITEM: 6.13.2.A(11)(a) - Construction Entrance  
STATUS OF REVIEW: NO  
REMARKS: Please submit a construction entrance detail (with anti-tracking features) for review.
- 39 DEPARTMENT: ENGDRN - STORMWATER REVIEW  
REVIEW ITEM: 6.13.2.A(12)/6.12.5 - Stormwater Details, Cross Sections, References  
STATUS OF REVIEW: NO  
REMARKS: Please provide details for the splash pads proposed at the bubble up structures for review.
- 40 DEPARTMENT: ENGDRN - STORMWATER REVIEW  
REVIEW ITEM: 7.1.3 - Drainage Construction Specifications  
STATUS OF REVIEW: NO  
REMARKS: LDC requires the use of RCP pipe for stormwater conveyance piping. To pursue using an alternative material, the engineer needs to submit a request identifying the alternative material type requested, verification that the material is included on the FDOT Approved Products List, and the site specific installation meets install criteria such as depth of cover and UV protection for pipe ends. County will review the request and provide feedback.
- 41 DEPARTMENT: ENGDRN - STORMWATER REVIEW  
REVIEW ITEM: 6.13.12 - Operation and Maintenance  
STATUS OF REVIEW: NO  
REMARKS: Please provide an O&M manual detailing the steps for operating and maintaining the proposed system of inlets, drains and DRAs. An owner's certification is required on the O&M manual. Certification to state "I hereby certify that I, my successor, and assigns shall perpetually operate and maintain the stormwater management and associated elements in accordance with the specifications shown herein and on the approved plan." The individual signing the certification needs to be an agent or member of the entity that will own and maintain the stormwater system, or an authorized signatory of that entity. If signatory is not an agent or

member, a letter authorizing a different individual needs to be submitted with the signed documents. The authorization letter must be signed by and agent/officer of owner. Sunbiz will be used to verify agents and/or officers. Please contact reviewer if you need examples of O&M manuals accepted in the past.

42 DEPARTMENT: ENGDRN - STORMWATER REVIEW

REVIEW ITEM: Please provide a final signed and sealed hard copy signature page with references to the stormwater analysis or final hard copy of the full stormwater analysis.

STATUS OF REVIEW: NO

REMARKS: After all stormwater comments are resolved, please upload a digitally signed and sealed report. A hard copy signed and sealed report can be submitted if desired.

43 DEPARTMENT: ENGTRF - TRAFFIC REVIEW

REVIEW ITEM: 6.11.5 - Driveway access

STATUS OF REVIEW: NO

REMARKS: 1/11/24 - 1. The driveway connection to SE 35th Street needs to be removed. It is located in a tight curve and too close to the intersecting street on the opposite side of the road. The driveway also does not provide greater access than the proposed right-in/right-out on Baseline Road. 2. Show that the driveways meet FDOT sight distance criteria and place a note on the plans stating such.

44 DEPARTMENT: ENGTRF - TRAFFIC REVIEW

REVIEW ITEM: 6.12.12 - Sidewalks

STATUS OF REVIEW: NO

REMARKS: 1/11/24 - Provide sidewalk on SE 35th Street.

45 DEPARTMENT: ENGIN - DEVELOPMENT REVIEW

REVIEW ITEM: 2.21.2.B - Major Site Plan fee of \$1,000.00 + (\$10.00 x total site acreage)

STATUS OF REVIEW: NO

REMARKS: 1/30/24 - fee due with resubmittal

46 DEPARTMENT: ENGIN - DEVELOPMENT REVIEW

REVIEW ITEM: 2.12.3 - Title block on all sheets denoting type of application; project name, location, county, and state; and date of original and all revisions

STATUS OF REVIEW: NO

REMARKS: 1/30/24 - include all information in title block for all sheets

47 DEPARTMENT: ENGIN - DEVELOPMENT REVIEW

REVIEW ITEM: 2.12.4.A - Type of application on front page

STATUS OF REVIEW: NO

REMARKS: 1/30/24 - type of application is major site plan

48 DEPARTMENT: UTIL - MARION COUNTY UTILITIES

REVIEW ITEM: 6.14.5.A(2) - Submittal Requirements - Proposed on-site & off-site mains and service connections

STATUS OF REVIEW: NO

REMARKS: Sheer C-501: 1. call out plug valve to be 316SS 2. keep prop bore pit onsite. 3. callout 48" cover over force main. 4. forcemain crossing can be 2" HDD, cased. Revise/callout. 5. north of the lift station, adjust the fittings to be within the property boundary before crossing SR 35. 6. no 90\* bends in sewer force main; adjust to 2x45\* 7. FM crossing calls for jack & bore. FDOT must approve, otherwise must be directional drill. Need P+P for drill, material to be used, depth, etc. 8. May require ARV on both sides of SR-35.

- 49 DEPARTMENT: UTIL - MARION COUNTY UTILITIES  
REVIEW ITEM: 6.14.5.B - Construction Notes - UT DETAILS - current LDC version  
STATUS OF REVIEW: NO  
REMARKS: All UT details revised 4/13/23 - you can find the CAD versions here:  
<https://utilities.marionfl.org/i-want-to/find-construction-related-forms> and Adobe set available upon request  
carrie.hyde@marionfl.org. No details for FM or ARV if needed
- 50 DEPARTMENT: UTIL - MARION COUNTY UTILITIES  
REVIEW ITEM: 6.14.5.D - Hydraulic Analysis  
STATUS OF REVIEW: NO  
REMARKS: Sheet C-905 - Ebara Pump table - seems too low; identify how this was determined
- 51 DEPARTMENT: UTIL - MARION COUNTY UTILITIES  
REVIEW ITEM: 6.14.7 - Construction Inspection - PLAN NOTE:  
STATUS OF REVIEW: NO  
REMARKS: Sheet C-501 Note 2 - change to ""MCU personnel are to inspect any work performed on or around existing MCU infrastructure. A pre-construction meeting is required to be held a minimum of 48 hours prior to start of any construction. If the pre-construction meeting is not completed, any work may be halted. To schedule, contact MCU's Construction Officer at 352-307-6163."
- 52 DEPARTMENT: UTIL - MARION COUNTY UTILITIES  
REVIEW ITEM: Utilities Plan Review Fee per Resolution 15-R-583 - payable to Marion County Utilities  
STATUS OF REVIEW: NO  
REMARKS: \$130 - to pay by phone call 352-671-8686 and advise this is for the Utility Review Fee for AR 30953. In order to clear this checklist item, this fee must be cleared PRIOR to resubmittal.
- 53 DEPARTMENT: UTIL - MARION COUNTY UTILITIES  
REVIEW ITEM: Additional Utilities comments  
STATUS OF REVIEW: NO  
REMARKS: cloud all changes as a result of this review
- 54 DEPARTMENT: UTIL - MARION COUNTY UTILITIES  
REVIEW ITEM: Additional Utilities comments  
STATUS OF REVIEW: NO  
REMARKS: Sheet C-501 General Note #1 - revise note that all onsite water & sewer behind property line will remain under private ownership.
- 55 DEPARTMENT: UTIL - MARION COUNTY UTILITIES  
REVIEW ITEM: Additional Utilities comments  
STATUS OF REVIEW: NO  
REMARKS: Sheet C-501 (1) Sewer Note #5 - connection will be wet tap into existing force main (2) Where are force main notes?
- 56 DEPARTMENT: FRMSH - FIRE MARSHAL REVIEW  
REVIEW ITEM: 6.18.2.D - Fire Department Connections  
STATUS OF REVIEW: NO  
REMARKS: If the proposed project contains a fire sprinkler system. The fire department connection must be out of the collapse zone which is defined as a minimum of 1 and ½ times the height of the highest portion of the building. A fire hydrant is required to be within 100 feet of a fire department connection (Per NFPA 14 Chapter 6.4.5.4.1).

- 57 DEPARTMENT: FRMSH - FIRE MARSHAL REVIEW  
REVIEW ITEM: 6.18.2.G - Painting and Marking of Fire Hydrants  
STATUS OF REVIEW: NO  
REMARKS: Site plans shall note on the plans if a new hydrant is installed shall be installed, tested, and painted per NFPA 291, by a third party contractor and witnessed by a Marion County Fire Inspector. Please note on the plans that fire hydrant locations shall be indicated by placement of a blue reflector in the middle of the roadway lane closest to the hydrant.
- 58 DEPARTMENT: 911 - 911 MANAGEMENT  
REVIEW ITEM: 2.12.28 - Correct road names supplied  
STATUS OF REVIEW: NO  
REMARKS: Sheet 09 has SE 35th St labeled incorrectly as SE 34th St and SE 58th Ave incorrectly labeled as State Road 35. Sheets C-201, C-202, C-301, C-302, C-401, C-501, and C601 have SE 58th Ave incorrectly labeled as State Road 35. Sheet C-302 has SE 57th Ct incorrectly labeled as SE 34th S.
- 59 DEPARTMENT: 911 - 911 MANAGEMENT  
REVIEW ITEM: Additional 911 comments  
STATUS OF REVIEW: NO  
REMARKS: Sheet C-101 has an incorrect Section, Township, Range listed as S30, T15S, R23E - it should be S25, T15, R22. The pages with Title Bars have the incorrect address of 3584 SE 58th Ave listed – it should be TBD SE 58th Ave. This needs to be corrected on all Title Bars throughout the plans. The Title Bars also have an incorrect Section, Township, Range listed as S30, T15S, R23E - it should be S25, T15, R22. This needs to be corrected on all Title Bars throughout the plans
- 60 DEPARTMENT: ENGSUR - SURVEY REVIEW  
REVIEW ITEM: 6.4.7.B(1) - Show a minimum of two intervisible horizontal control points per site  
STATUS OF REVIEW: NO  
REMARKS: Please Provide.
- 61 DEPARTMENT: ENGSUR - SURVEY REVIEW  
REVIEW ITEM: 6.4.7.B(2) - Horizontal control points shall be monumented and referenced to the Florida State Plane Coordinate System  
STATUS OF REVIEW: NO  
REMARKS: Please Provide.
- 62 DEPARTMENT: ENGSUR - SURVEY REVIEW  
REVIEW ITEM: 6.4.7.B(4) - Provide a statement or table detailing horizontal datum, adjustment, and coordinate values  
STATUS OF REVIEW: NO  
REMARKS: Please Provide.
- 63 DEPARTMENT: LSCAPE - LANDSCAPE DESIGN AND IRRIGATION  
REVIEW ITEM: 2.12.18 - All trees 10" DBH and larger  
STATUS OF REVIEW: NO  
REMARKS: 1. Provide Tree symbol legend 2. Not all trees are labeled with size
- 64 DEPARTMENT: LSCAPE - LANDSCAPE DESIGN AND IRRIGATION  
REVIEW ITEM: 6.7.3 - Tree protection  
STATUS OF REVIEW: NO  
REMARKS: Show tree protection in detail and on plan

- 65 DEPARTMENT: LSCAPE - LANDSCAPE DESIGN AND IRRIGATION  
REVIEW ITEM: 6.7.4 - Shade tree requirements  
STATUS OF REVIEW: NO  
REMARKS: 64 shade trees required (site area/3,000sf), 40 provided - add remaining trees or request waiver
- 66 DEPARTMENT: LSCAPE - LANDSCAPE DESIGN AND IRRIGATION  
REVIEW ITEM: 6.7.6 - Tree removal submittal requirements  
STATUS OF REVIEW: NO  
REMARKS: Provide sizes for all existing trees
- 67 DEPARTMENT: LSCAPE - LANDSCAPE DESIGN AND IRRIGATION  
REVIEW ITEM: 6.7.8 - Protected tree replacement requirements  
STATUS OF REVIEW: NO  
REMARKS: 36" tree to be assessed for viability by a certified arborist or landscape architect
- 68 DEPARTMENT: LSCAPE - LANDSCAPE DESIGN AND IRRIGATION  
REVIEW ITEM: 6.8.4 - Landscape area requirements for non-residential development  
STATUS OF REVIEW: NO  
REMARKS: Provide calculations
- 69 DEPARTMENT: LSCAPE - LANDSCAPE DESIGN AND IRRIGATION  
REVIEW ITEM: 6.8.6 - Buffers  
STATUS OF REVIEW: NO  
REMARKS: 1. North and West buffer requires staff discussion regarding preserving existing trees and wall requirement.
- 70 DEPARTMENT: LSCAPE - LANDSCAPE DESIGN AND IRRIGATION  
REVIEW ITEM: 6.8.7 - Parking areas and vehicular use areas  
STATUS OF REVIEW: NO  
REMARKS: Shumard oaks cannot be within 20' of the building, please confirm distances
- 71 DEPARTMENT: LSCAPE - LANDSCAPE DESIGN AND IRRIGATION  
REVIEW ITEM: 6.19.3 - Outdoor lighting plan requirements  
STATUS OF REVIEW: NO  
REMARKS: will there be outdoor lighting? if so, a photometric plan is required
- 72 DEPARTMENT: ZONE - ZONING DEPARTMENT  
REVIEW ITEM: 2.12.21/6.3.1.C(10) - Land use and zoning on project and on adjacent properties shown  
STATUS OF REVIEW: NO  
REMARKS: Land use and zoning is provided for project, however no land uses or zoning classifications are provided for adjacent properties on front page provided.
- 73 DEPARTMENT: ZONE - ZONING DEPARTMENT  
REVIEW ITEM: 2.12.4.L(4) - Zoning requirements: lot width, area , setbacks , coverage (floor area ratios) and parking  
STATUS OF REVIEW: NO  
REMARKS: Lot width not provided, please add to front page.

- 74 DEPARTMENT: ZONE - ZONING DEPARTMENT  
REVIEW ITEM: 2.12.24 - Landscape requirements/6.8.6 - Buffering  
STATUS OF REVIEW: NO  
REMARKS: Please also clearly specify on site plan the buffer types to be provided on all locations according to LDC Sec 6.8.6
- 75 DEPARTMENT: ZONE - ZONING DEPARTMENT  
REVIEW ITEM: 2.12.32 - Modified Environmental Assessment for Listed Species (LDC 6.5.4) -OR- EALS Exemption Application (LDC 6.5.3) submitted (including habitat assessment as necessary per LDC 6.6.4)  
STATUS OF REVIEW: NO  
REMARKS: Please provide Modified Environmental Assessment for Listed Species or EALS Exemption Application including habitat assessment/management plan as necessary.
- 76 DEPARTMENT: ZONE - ZONING DEPARTMENT  
REVIEW ITEM: 2.12.4.L(10) - Parking requirements, service entrances, space size paved parking isle and access to parking area/6.11.8 - Off-street parking requirements/6.11.7 - Loading Areas/ 6.11.6 - Construction access/route  
STATUS OF REVIEW: NO  
REMARKS: Minimum required spaces is not being met. Ratio of parking space requirement is 1 space : 3,000 SF. = 41 spaces needed, here. Please provide ITE documentation cited on plan, specifically the use code for consideration and review.
- 77 DEPARTMENT: ZONE - ZONING DEPARTMENT  
REVIEW ITEM: 5.2 & 5.3 - Verify any overlay zones such as ESOZ, Springs Protection, or Flood Plain  
STATUS OF REVIEW: NO  
REMARKS: Please provide overlay zones, such as springs protection zone.



**Marion County  
Board of County Commissioners**

AR 30953

Office of the County Engineer

412 SE 25th Ave.  
Ocala, FL 34471  
Phone: 352-671-8686  
Fax: 352-671-8687

**DEVELOPMENT REVIEW COMMITTEE WAIVER REQUEST FORM**

Date: 03/11/24 Parcel Number(s): 29697-020-00 Permit Number: 30953

**A. PROJECT INFORMATION:** Fill in below as applicable:

Project Name: Self Storage - Ocala Commercial  Residential   
Subdivision Name (if applicable): \_\_\_\_\_  
Unit \_\_\_\_\_ Block \_\_\_\_\_ Lot \_\_\_\_\_ Tract \_\_\_\_\_

**B. PROPERTY OWNER'S AUTHORIZATION:** The property owner's signature authorizes the applicant to act on the owner's behalf for this waiver request. The signature may be obtained by email, fax, scan, a letter from the property owner, or original signature below.

Name (print): Real Capital Leasing, LLC  
Signature: \_\_\_\_\_  
Mailing Address: 330 E. Crown Point Rd City: Winter Garden  
State: FL Zip Code: 34787 Phone # 770-359-9636  
Email address: Brandon Kublanow

**C. APPLICANT INFORMATION:** The applicant will be the point of contact during this waiver process and will receive all correspondence.

Firm Name (if applicable): BOHLER ENGINEERING LLC Contact Name: KYLE MOREL  
Mailing Address: 600 N WESTSHORE BLVD. SUITE 950 City: TAMPA  
State: FL Zip Code: 33609 Phone # 813-812-4100  
Email address: FL-PERMITS@BOHLERENG.COM

**D. WAIVER INFORMATION:**

Section & Title of Code (be specific): 6.4.3 PRELIMINARY PLAT REQUIREMENTS  
Reason/Justification for Request (be specific): Unable to obtain 100' of contours beyond the western property line because the property abuts multiple residential properties.

**DEVELOPMENT REVIEW USE:**

Received By: Email 3/19/24 Date Processed: 3/19/24 BM Project # 2023050138 AR # 30953

ZONING USE: Parcel of record: Yes  No  Eligible to apply for Family Division: Yes  No   
Zoned: \_\_\_\_\_ ESOZ: \_\_\_\_\_ P.O.M. \_\_\_\_\_ Land Use: \_\_\_\_\_ Plat Vacation Required: Yes  No   
Date Reviewed: \_\_\_\_\_ Verified by (print & initial): \_\_\_\_\_



**Marion County  
Board of County Commissioners**

Office of the County Engineer

412 SE 25th Ave.  
Ocala, FL 34471  
Phone: 352-671-8686  
Fax: 352-671-8687

**DEVELOPMENT REVIEW COMMITTEE WAIVER REQUEST FORM**

Section & Title of Code (be specific) 6.11.8 PARKING REQUIREMENTS 6.11.8 PARKING REQUIREMENTS

Reason/Justification for Request (be specific): Requesting a reduction in required spaces due to the proposed use of the site.

Requesting a reduction to 10 required parking spaces for the proposed site.

Section & Title of Code (be specific) 6.8.6 BUFFERS 6.8.6 BUFFERS

Reason/Justification for Request (be specific): Requesting a waiver to not provide a screening wall along the Type B buffer along the western property boundary.

Our justification is that there is already a 6' wood fence along the length of the property boundary, our proposed building will not have any windows or doors along the western property boundary

and a combination of proposed and existing landscaping will be used to screen the site along the western property boundary.

Section & Title of Code (be specific) \_\_\_\_\_

Reason/Justification for Request (be specific): \_\_\_\_\_

Section & Title of Code (be specific) \_\_\_\_\_

Reason/Justification for Request (be specific): \_\_\_\_\_

Section & Title of Code (be specific) \_\_\_\_\_

Reason/Justification for Request (be specific): \_\_\_\_\_

Section & Title of Code (be specific) \_\_\_\_\_

Reason/Justification for Request (be specific): \_\_\_\_\_

Section & Title of Code (be specific) \_\_\_\_\_

Reason/Justification for Request (be specific): \_\_\_\_\_





**SITE NOTES:**

- THE PROPOSED ACTIVITIES SHALL COMPLY WITH MARION COUNTY DEVELOPMENT REGULATIONS (LATEST EDITION) INCLUDING THE TREE AND LANDSCAPE CODE, STORM WATER MANAGEMENT REGULATIONS, AND FIRE CODES AT THE TIME OF PERMITTING.
- SIDEWALKS TO BE PROVIDED AND BUILT IN ACCORDANCE WITH F.D.O.T. AND MARION COUNTY LAND DEVELOPMENT REGULATIONS (LATEST EDITION). ALL PROPOSED SIDEWALKS SHALL MEET ADA REQUIREMENTS.
- ALL DIMENSIONS ARE SHOWN AT FACE OF CURB, UNLESS OTHERWISE NOTED. B/C INDICATES DIMENSION IS TO BACK OF CURB.
- ALL RADII DIMENSIONS ARE 3' AT THE FACE OF CURB UNLESS OTHERWISE NOTED.
- FREE STANDING SIGNAGE SHOWN ONLY FOR REPRESENTATIONAL PURPOSES, AND SHALL BE PERMITTED SEPARATELY.
- A RIGHT-OF-WAY PERMIT WILL BE REQUIRED FOR ALL WORK WITHIN THE PUBLIC RIGHT-OF-WAY. SPECIFIC STIPULATIONS OR CONDITIONS WILL BE IMPOSED AT THE TIME OF PERMIT APPLICATION.
- CONSTRUCTION PLAN APPROVAL DOES NOT EXEMPT THE CONTRACTOR FROM OBTAINING THE REQUIRED BUILDING, ELECTRICAL, PLUMBING, AND MECHANICAL PERMITS. THESE INCLUDE BUT ARE NOT LIMITED TO ANY STRUCTURE, SIGN, WALL, ENCLOSURE, OR SCREENING, ETC.
- IN THE EVENT THE PROJECT IS TERMINATED PRIOR TO CONSTRUCTION COMPLETION, THE PROJECT SHALL BE BROUGHT TO GRADE, SEEDED, AND ALL DEBRIS AND MATERIALS SHALL BE HAULED OFF-SITE AND DUMPED AT A STATE OF FLORIDA APPROVED FACILITY.
- ANY DAMAGED SIDEWALK OR CURB WITHIN THE F.D.O.T. RIGHT-OF-WAY SHALL BE REMOVED AND REPLACED.
- ALL DISTURBED AREAS WITHIN THE F.D.O.T. RIGHT-OF-WAY WILL BE SODDED.
- STANDARD INDICES REFER TO THE LATEST VERSION OF F.D.O.T. "ROADWAY AND TRAFFIC DESIGN STANDARDS".
- NO LANE CLOSURES ARE ALLOWED BETWEEN 5:00 A.M. AND 7:30 P.M. THE F.D.O.T. RESERVES THE RIGHT TO REQUIRE DIFFERENT HOURS OF LANE CLOSURE. ALL LANE CLOSURES MUST BE APPROVED BY THE DEPARTMENT AT LEAST TWO WEEKS PRIOR TO THE LANE CLOSURE IN ACCORDANCE WITH THE DISTRICT LANE CLOSURE POLICY.

- ALL POTABLE WATER, RECLAIMED WATER, AND SANITARY SEWER CONSTRUCTION SHALL BE IN ACCORDANCE WITH THE APPROVED CONSTRUCTION PLAN.
- FDEP WATER AND WASTEWATER PERMITS MUST BE OBTAINED PRIOR TO BEGINNING CONSTRUCTION.
- PROPER DOCUMENTATION FOR ALL PUBLIC UTILITY EASEMENTS SHALL BE PROVIDED TO THE PROPERTY MANAGEMENT DEPARTMENT PRIOR TO CERTIFICATE OF COMPLETION.
- UTILITY RECORD DRAWINGS ARE REQUIRED PRIOR TO PLACING THIS WATER AND WASTEWATER FACILITIES INTO SERVICE. PLEASE SEE THE ADDITIONAL INFORMATION SECTION FOR INSTRUCTIONS.

**RIGHT-OF-WAY NOTES:**

- A RIGHT-OF-WAY USE PERMIT WILL BE REQUIRED FOR ALL WORK WITHIN THE PUBLIC RIGHT-OF-WAY. SPECIFIC STIPULATIONS OR CONDITIONS WILL BE IMPOSED AT THE TIME OF PERMIT APPLICATION.
- ALL AREAS WITHIN THE COUNTY OR F.D.O.T. RIGHT-OF-WAY DISTURBED THROUGH THE COURSE OF CONSTRUCTION WILL BE RE-GRADED AND SODDED WITH MESH-FREE ARGENTINE BAHIA SOD.
- IT SHALL BE THE DEVELOPER'S RESPONSIBILITY TO PROTECT ALL COUNTY OR F.D.O.T. OWNED AND/OR MAINTAINED INFRASTRUCTURE. ANY/COSTS ASSOCIATED WITH ALTERATIONS, RELOCATIONS, OR REPAIRS MADE NECESSARY BY THIS DEVELOPMENT SHALL BE BORNE BY EITHER THE OWNER, DEVELOPER, AND/OR CONTRACTOR. SPLICES IN THE FIBER OPTIC CABLE, SIGNALIZATION OR ROADWAY LIGHTING CONDUCTORS, OR THE ADDITION OF ADDITIONAL PULL/JUNCTION BOXES WILL NOT BE PERMITTED. IN THE EVENT A CABLE IS CUT, DAMAGED, OR REQUIRES RELOCATION, THE CABLE(S) SHALL BE RESTORED BACK TO THE ORIGINAL CONFIGURATION. ORIGINAL CONFIGURATION IS DEFINED AS SYSTEM STATUS, LAYOUT, AND DESIGN PRIOR TO ANY WORK COMMENCING.
- FOR UTILITIES TO BE RELOCATED BY THE UTILITY PROVIDER, CONTRACTOR SHALL COORDINATE DEMOLITION SCHEDULE WITH UTILITY PROVIDERS. DEMOLITION OF SIDEWALKS AND DRIVEWAYS SHALL OCCUR PRIOR TO UTILITY RELOCATIONS.
- NO EXCAVATION WITHIN THE RIGHT-OF-WAY CAN BE LEFT UNATTENDED.

**ADA ACCESSIBILITY NOTES:**

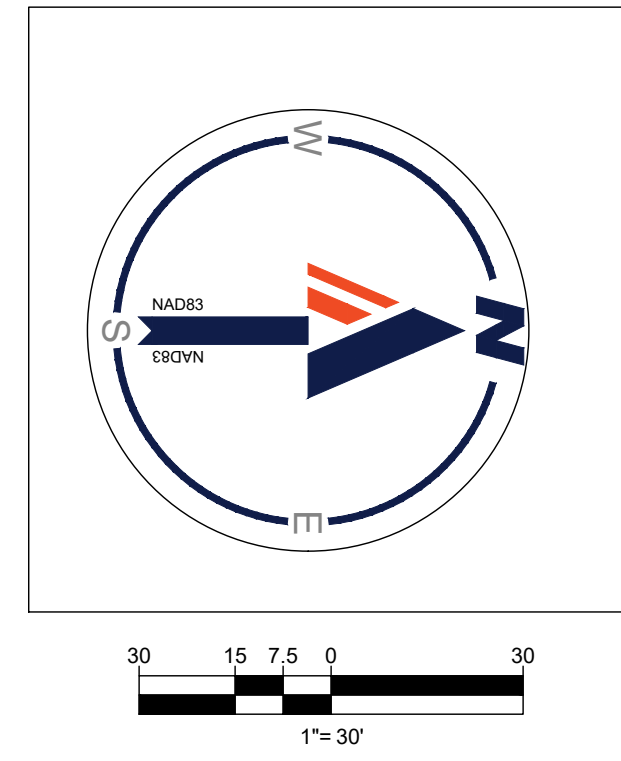
- ALL HANDICAPPED PARKING SPACES AND ACCESS AISLES ADJACENT TO THE HANDICAP PARKING SPACES SHALL HAVE A MAXIMUM OF 2% SLOPE IN ALL DIRECTIONS (THIS INCLUDES RUNNING SLOPE AND CROSS SLOPE).
- AN ACCESSIBLE ROUTE FROM THE PUBLIC STREET OR SIDEWALK TO ALL BUILDING ENTRANCES MUST BE PROVIDED. THIS ACCESSIBLE ROUTE SHALL BE A MINIMUM OF 60" WIDE. THE RUNNING SLOPE OF AN ACCESSIBLE ROUTE SHALL NOT EXCEED 5% AND THE CROSS SLOPE SHALL NOT EXCEED 2%.
- SLOPES EXCEEDING 5% BUT LESS THAN 8% WILL REQUIRE A RAMP AND MUST CONFORM TO THE REQUIREMENTS FOR RAMP DESIGN (HANDRAILS, CURBS, LANDINGS). NO RAMP SHALL EXCEED AN 8% RUNNING SLOPE OR 2% CROSS SLOPE.
- IN THE CASE THAT A NEW SIDEWALK WILL BE CONSTRUCTED IN THE ROW OF A SITE, THE RUNNING SLOPE OF THE SIDEWALK SHALL NOT EXCEED 5% AND THE CROSS SLOPE SHALL NOT EXCEED 2%. THIS STANDARD APPLIES TO CROSS WALKS IN THE DRIVEWAY AS WELL AND WILL REQUIRE SPECIAL ATTENTION DURING STAKING TO MAKE SURE THE 2% CROSS SLOPE IS MET IN THE CROSS WALK.
- IT WILL BE THE RESPONSIBILITY OF THE GENERAL CONTRACTOR TO ENSURE THAT THE HANDICAP PARKING SPACES, ACCESSIBLE ROUTES, AND SIDEWALKS/CROSSWALKS ARE CONSTRUCTED TO MEET ADA REQUIREMENTS.
- ANY REQUIREMENTS LISTED ABOVE THAT CAN NOT BE MET SHALL BE BROUGHT TO THE ENGINEER'S ATTENTION IMMEDIATELY. ANYTHING NOT BUILT TO THE ABOVE STANDARDS WILL REQUIRE REMOVAL AND REPLACEMENT OF THE NON COMPLIANT AREAS AT THE GENERAL CONTRACTOR'S COST.

**MARION COUNTY FIRE NOTES:**

- PROPOSED FIRE HYDRANTS SHALL BE INSTALLED, TESTED, AND PAINTED PER NFPA 291, BY A THIRD PARTY CONTRACTOR AND WITNESSED BY A MARION COUNTY FIRE INSPECTOR.
- FIRE HYDRANT LOCATIONS SHALL BE INDICATED BY PLACEMENT OF A BLUE REFLECTOR IN THE MIDDLE OF THE ROADWAY LANE CLOSEST TO THE HYDRANT.

SITE DATA	
PARCEL ID/FOLIO NUMBER	29697-020-00
SITE ADDRESS	3584 SE 58TH AVE
	OCALA, FL 34480
JURISDICTION	MARION COUNTY
ZONING	B-2
FUTURE LAND USE	COMMERCIAL (D-RDE/AC)
EXISTING LAND USE	VACANT LAND
PROPOSED LAND USE	SELF-STORAGE
FEMA ZONE	X
MAXIMUM F.A.R.	1.0
MAXIMUM BUILDING HEIGHT	50'
PROPOSED BUILDING HEIGHT	29'-4"
ADJACENT ZONING (WEST)	(R-1) SINGLE FAMILY DWELLING
ADJACENT ZONING (SOUTH)	N/A TIF LANDS OF STATE OF FL
ADJACENT LAND USE (WEST)	MEDIUM DENSITY RESIDENTIAL
ADJACENT LAND USE (SOUTH)	N/A TIF LANDS OF STATE OF FL
PARKING CALCULATIONS	
TOTAL SPACES PROVIDED	10 SPACES
REQUIRED PARKING SPACES	1 SPACE PER 3000 SF = 122,000/3,000 = 41 SPACES
LANDSCAPE BUFFERS	
NORTH	15' TYPE C
WEST	20' TYPE B
EAST	15' TYPE C

LEGEND	
EX. PROPERTY LINE	---
EX. ADJACENT PROPERTY LINE	---
EX. ROADWAY C/L	---
PROP. PROPERTY LINE	---
PROP. BUFFER	---
PROP. SETBACK	---
PROP. PARKING COUNT	⊙
PROP. SIGN	▲
PROP. BUILDING ENTRANCES	▲
PROP. CONCRETE SIDEWALK	---



**BOHLER**  
 SITE CIVIL AND CONSULTING ENGINEERING  
 PROGRAM MANAGEMENT  
 LANDSCAPE ARCHITECTURE  
 SUSTAINABLE DESIGN  
 PERMITTING SERVICES  
 TRANSPORTATION SERVICES

**REVISIONS**

REV	DATE	COMMENT	DRAWN BY
1	2023-12-20	PER FDOT COMMENTS	KK
2	2023-12-20	SJRWMD COMMENTS	KK
3	2024-02-05	MARION COUNTY COMMENTS	KK
4	2024-02-16	QC COMMENTS	KK
5	2024-03-26	FDOT COMMENTS	KK

**811**  
 Know what's below.  
 Call before you dig.  
 ALWAYS CALL 811  
 It's fast. It's free. It's the law.

ISSUED FOR MUNICIPAL & AGENCY REVIEW & APPROVAL

PROJECT No.: FLA230158.00  
 DRAWN BY: PT  
 CHECKED BY: KM  
 DATE: 01/12/2023  
 CAD ID.: SITE - 0

**SITE CONSTRUCTION PLANS**  
 FOR  
**STORAGE CAP LEASING LLC**

3584 SE 58TH AVE  
 MARION COUNTY  
 OCALA, FL 34480  
 S25-T15-R22

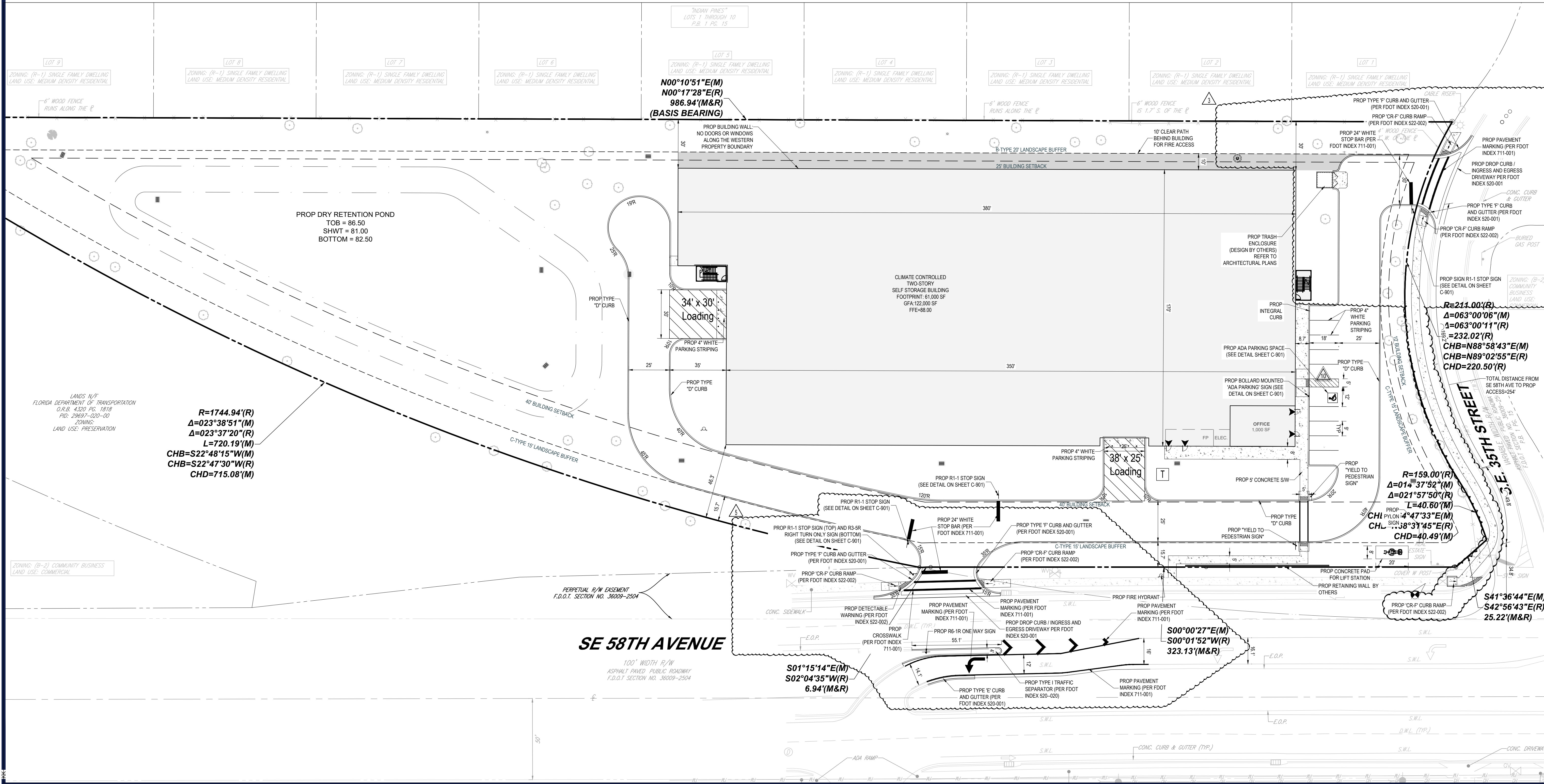
**BOHLER**  
 600 N. WESTSHORE BLVD. SUITE 950  
 TAMPA, FLORIDA 33609  
 Phone: (813) 812-4100  
 Fax: (813) 812-4101  
 FLORIDA BUSINESS CERT. OF AUTH. No. 30780

THIS ITEM HAS BEEN DIGITALLY SIGNED AND SEALED BY KYLE STEVEN MOREL PE ON THE DATE ADJACENT TO THE SEAL. PRINTED COPIES OF THIS DOCUMENT ARE NOT CONSIDERED SIGNED AND SEALED AND THE SIGNATURE MUST BE VERIFIED ON ANY ELECTRONIC COPIES.

SHEET TITLE:  
**SITE LAYOUT PLAN**

SHEET NUMBER:  
**C-301**

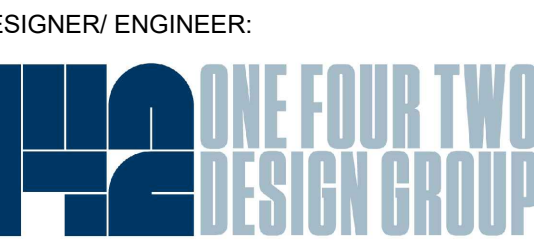
REVISION 5 - 2024-03-26





TIMOTHY  
SUNGSOO  
LEE, P.E.

2642 North Chase Rd  
Ponchaikula, CA 92092  
Ph: 619-438-8864  
tm.lee@tdesigner.com  
JOB #24111



OWNER:

PROJECT TITLE:

STORE SPACE  
OCALA

3584 SE 58TH AVENUE  
OCALA, FL 34480



SEAL:

NOT FOR  
CONSTRUCTION

SUBMITTALS / REVISIONS:

NO.	DATE	DESCRIPTION
2024.03.08	100% PROGRESS	

PROJECT NO.: DSXXX-23  
DRAWN BY: TSL

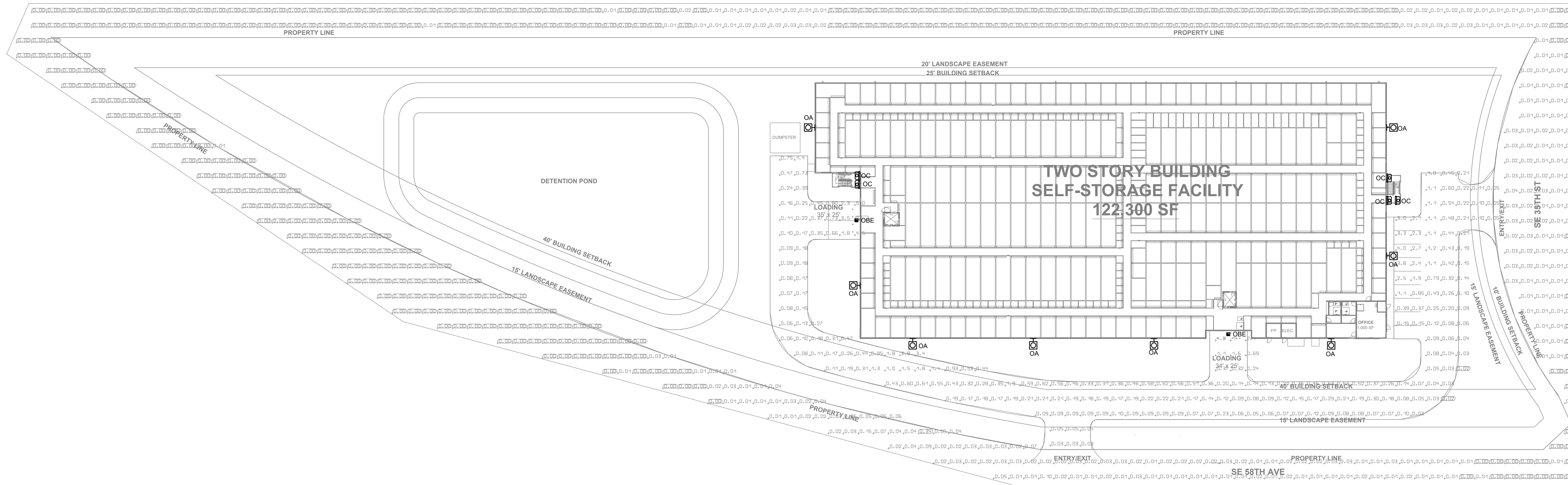
SHEET TITLE:  
SITE LIGHTING PLAN

These drawings are the property of the registered Designer/ Engineer and may not be copied, reproduced or used without their written permission.

SHEET NUMBER:

CL101

2024.03.08



1 SITE PHOTOMETRICS PLAN  
CL101 SCALE: 1/32" = 1'-0"

#	Name	Parameter	Min	Max	Average	Min/average	Min/max
1	Off Property	Perpendicular illuminance	0.000 fc	0.34 fc	0.009 fc	0.00	0.00
2	Drive/Park	Perpendicular illuminance	0.024 fc	23.1 fc	0.71 fc	0.034	0.001

PHOTOMETRICS NOTES

1. THE PHOTOMETRIC VALUES SHOWN ON THIS PLAN HAVE BEEN CALCULATED USING DIALUX evo 9.1 (VERSION 5.9.1 5/11/20). ACTUAL PERFORMANCE OF LUMINAIRES MAY DIFFER DUE TO VARIATIONS OF VOLTAGE, TOLERANCES IN LAMPS, ELEVATION CHANGES, TREES, OBSTRUCTIONS, AND OTHER FIELD CONDITIONS.  
2. DUE TO LIMITED AVAILABILITY OF .IES FILES FROM MOST LIGHTING MANUFACTURERS, THE LUMINAIRE MODEL NUMBER(S) USED FOR PHOTOMETRIC CALCULATIONS MAY DIFFER FROM ACTUAL MODEL NUMBERS. SEE LIGHT FIXTURE SCHEDULE FOR ACTUAL MODEL NUMBERS.

















**GENERAL NOTE:**

1. ALL DRAINAGE WATER AND SEWER DISTRIBUTION COLLECTION LINES SHALL BE PERMITTED UNDER A BARRIAGE DRAINAGE OR CIVIL UTILITY BARRIAGE IS DESCRIBED & APPROVED BY ALL INVOLVED PARTIES.
2. ALL PERSONNEL ARE TO RESPECT ANY BARRIAGE POSTED IN AN ADEQUATE MANNER AND TO RESPECT ANY BARRIAGE POSTED IN AN ADEQUATE MANNER. A PRE-CONSTRUCTION MEETING IS REQUIRED TO BE HELD 14 DAYS PRIOR TO THE START OF ANY CONSTRUCTION. IF THE PRE-CONSTRUCTION MEETING IS NOT COMPLETED, ANY WORK MAY BE PAUSED. TO SCHEDULE CONTACT MARK RUDOLPH AT 813.948.5416 OR TO SCHEDULE CONTACT MARK RUDOLPH@BOHLERENGINEERING.COM.
3. ALL AS-BUILT'S SHALL COMPLY WITH THE CURRENT LDC.
4. ANY NEEDS TO BE CONVEYED TO MARION COUNTY UTILITIES AS PART OF THE PUBLIC UTILITY SYSTEM SHALL BE COORDINATED PRIOR TO MARION COUNTY UTILITIES THROUGH THE DESIGN AND CONSTRUCTION SUBMITTALS AND THE CONSTRUCTION CLARIFICATION PACKAGE.
5. ALL CONSTRUCTION SHALL BE IN ACCORDANCE WITH LDC SECTION 7.
6. COPIES OF ALL RELATED PERMIT APPLICATIONS AND ISSUED PERMITS SHALL BE SUBMITTED TO THE DEVELOPMENT REVIEWER FOR MARION COUNTY UTILITIES DEPARTMENT.

**SANITARY SEWER NOTES:**

1. DISTANCE AND LENGTH SHOWN ON PLAN AND PROFILE DRAWINGS ARE REFERENCED TO THE CENTER OF STRUCTURES.
2. PRIOR TO COMMENCING CONSTRUCTION, CONTRACTOR TO TELEPHONE EXISTING SANITARY SEWER LINE PRIOR TO CONSTRUCTION THROUGH THE NEXT NEIGHBORHOOD DOWNSTREAM RUN OF PIPE. ADDITIONALLY PRIOR TO COMMENCING CONSTRUCTION, CONTRACTOR SHALL TELEPHONE THE NEAREST EXISTING SANITARY SEWER MAIN TO DETERMINE DEPTH OF DEPTHS BETWEEN LINES.

**WATER DISTRIBUTION NOTES:**

1. CONTRACTOR SHALL FOLLOW LOCAL AND STATE REGULATIONS OUTLINED BY UTILITY PROVIDERS AND HAVE UTILITY PROVIDERS SIGN OFF ON ALL UTILITIES. THE UTILITY MANUAL SHALL BE CONSIDERED PART OF THE CONSTRUCTION DOCUMENTS AS IT PERTAINS TO APPROVED MATERIALS, INSTALLATION METHODS, INSPECTION PROCEDURES AND AS-BUILT PROJECT CLOSURE REQUIREMENTS.
2. ALL HIGH DENSITY POLYETHYLENE PIPE AND FITTINGS SHALL MEET THE REQUIREMENTS OF ANSI A131 LATEST EDITIONS. ALL PIPING TO BE NON-PERFORATED TUBING.
3. CONTRACTOR TO COORDINATE WITH COUNTY AND ADJACENT PROPERTY OWNERS AND BUSINESSES FOR ANY INTERFERING WATER REQUIREMENTS FOR CONNECTION TO EXISTING WATER LINE.
4. CONTRACTOR TO VERIFY IF BENCH MARKS ARE NECESSARY TO MAINTAIN VERTICAL SEPARATION FROM STORM SEWER PER FLORIDA DEPARTMENT OF ENVIRONMENTAL PROTECTION.

**SANITARY SEWER GRAVITY NOTES:**

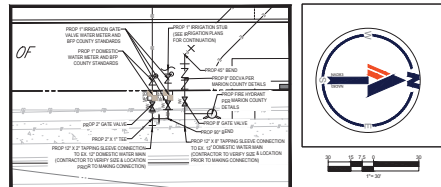
1. IF REQUIRED, THE CONTRACTOR SHALL SUBMIT THE DESIGN IN THE EXISTING MANHOLE TO ACCOMMODATE THE NEW FLOW DIRECTION FOR CONNECTION TO EXISTING WATER LINE.
2. CONTRACTOR TO VERIFY IF BENCH MARKS ARE NECESSARY TO MAINTAIN VERTICAL SEPARATION FROM STORM SEWER PER FLORIDA DEPARTMENT OF ENVIRONMENTAL PROTECTION.
3. CONTRACTOR TO COORDINATE WITH COUNTY AND ADJACENT PROPERTY OWNERS AND BUSINESSES FOR ANY INTERFERING WATER REQUIREMENTS FOR CONNECTION TO EXISTING WATER LINE.
4. CONTRACTOR TO VERIFY IF BENCH MARKS ARE NECESSARY TO MAINTAIN VERTICAL SEPARATION FROM STORM SEWER PER FLORIDA DEPARTMENT OF ENVIRONMENTAL PROTECTION.

**DATUM NOTE:**

ELEVATIONS ARE BASED ON NAVD83 DATUM DETERMINED BY GPS OBSERVATIONS MADE TO THE NEAREST POINT OF THE SYSTEM FOR REVIEW AND APPROVAL TO THE MARION COUNTY PUBLIC WORKS DEPARTMENT. THE SUBJECT PROPERTY LOCATED IN FLOOD ZONE X AS SHOWN ON THE FLOOD INSURANCE RATE MAP NUMBER 130826460 WITH EFFECTIVE OF 08/08/2006.

**FEMA NOTE:**

ELEVATIONS ARE BASED ON NAVD83 DATUM DETERMINED BY GPS OBSERVATIONS MADE TO THE NEAREST POINT OF THE SYSTEM FOR REVIEW AND APPROVAL TO THE MARION COUNTY PUBLIC WORKS DEPARTMENT. THE SUBJECT PROPERTY LOCATED IN FLOOD ZONE X AS SHOWN ON THE FLOOD INSURANCE RATE MAP NUMBER 130826460 WITH EFFECTIVE OF 08/08/2006.



**WATER CONNECTION DETAIL:**

SCALE: 1" = 10'

**UTILITY CROSSING SCHEDULE:**

UTILITY	DEPTH	PROTECTION
PROP 15" SANITARY SEWER	10'-0"	18" CONCRETE
PROP 12" SANITARY SEWER	10'-0"	18" CONCRETE
PROP 10" SANITARY SEWER	10'-0"	18" CONCRETE
PROP 8" SANITARY SEWER	10'-0"	18" CONCRETE
PROP 6" SANITARY SEWER	10'-0"	18" CONCRETE
PROP 4" SANITARY SEWER	10'-0"	18" CONCRETE
PROP 3" SANITARY SEWER	10'-0"	18" CONCRETE
PROP 2" SANITARY SEWER	10'-0"	18" CONCRETE
PROP 1.5" SANITARY SEWER	10'-0"	18" CONCRETE
PROP 1" SANITARY SEWER	10'-0"	18" CONCRETE
PROP 0.75" SANITARY SEWER	10'-0"	18" CONCRETE
PROP 0.5" SANITARY SEWER	10'-0"	18" CONCRETE
PROP 0.375" SANITARY SEWER	10'-0"	18" CONCRETE
PROP 0.25" SANITARY SEWER	10'-0"	18" CONCRETE
PROP 0.1875" SANITARY SEWER	10'-0"	18" CONCRETE
PROP 0.125" SANITARY SEWER	10'-0"	18" CONCRETE
PROP 0.09375" SANITARY SEWER	10'-0"	18" CONCRETE
PROP 0.0625" SANITARY SEWER	10'-0"	18" CONCRETE
PROP 0.046875" SANITARY SEWER	10'-0"	18" CONCRETE
PROP 0.03125" SANITARY SEWER	10'-0"	18" CONCRETE
PROP 0.0234375" SANITARY SEWER	10'-0"	18" CONCRETE
PROP 0.015625" SANITARY SEWER	10'-0"	18" CONCRETE
PROP 0.01171875" SANITARY SEWER	10'-0"	18" CONCRETE
PROP 0.0078125" SANITARY SEWER	10'-0"	18" CONCRETE
PROP 0.005859375" SANITARY SEWER	10'-0"	18" CONCRETE
PROP 0.004396875" SANITARY SEWER	10'-0"	18" CONCRETE
PROP 0.00329765625" SANITARY SEWER	10'-0"	18" CONCRETE
PROP 0.002472890625" SANITARY SEWER	10'-0"	18" CONCRETE
PROP 0.00185466796875" SANITARY SEWER	10'-0"	18" CONCRETE
PROP 0.001391001953125" SANITARY SEWER	10'-0"	18" CONCRETE
PROP 0.00104325146484375" SANITARY SEWER	10'-0"	18" CONCRETE
PROP 0.0007824386015625" SANITARY SEWER	10'-0"	18" CONCRETE
PROP 0.000586828951171875" SANITARY SEWER	10'-0"	18" CONCRETE
PROP 0.00044012171484375" SANITARY SEWER	10'-0"	18" CONCRETE
PROP 0.000330091286015625" SANITARY SEWER	10'-0"	18" CONCRETE
PROP 0.00024756846453125" SANITARY SEWER	10'-0"	18" CONCRETE
PROP 0.0001856763484375" SANITARY SEWER	10'-0"	18" CONCRETE
PROP 0.000139257261328125" SANITARY SEWER	10'-0"	18" CONCRETE
PROP 0.000104442946015625" SANITARY SEWER	10'-0"	18" CONCRETE
PROP 0.00007833220953125" SANITARY SEWER	10'-0"	18" CONCRETE
PROP 0.000058749153125" SANITARY SEWER	10'-0"	18" CONCRETE
PROP 0.000044061890625" SANITARY SEWER	10'-0"	18" CONCRETE
PROP 0.00003304641796875" SANITARY SEWER	10'-0"	18" CONCRETE
PROP 0.0000247848125" SANITARY SEWER	10'-0"	18" CONCRETE
PROP 0.000018588609375" SANITARY SEWER	10'-0"	18" CONCRETE
PROP 0.000013941453125" SANITARY SEWER	10'-0"	18" CONCRETE
PROP 0.000010456078125" SANITARY SEWER	10'-0"	18" CONCRETE
PROP 0.000007842059375" SANITARY SEWER	10'-0"	18" CONCRETE
PROP 0.00000588154296875" SANITARY SEWER	10'-0"	18" CONCRETE
PROP 0.000004411157296875" SANITARY SEWER	10'-0"	18" CONCRETE
PROP 0.000003308368125" SANITARY SEWER	10'-0"	18" CONCRETE
PROP 0.0000024712765625" SANITARY SEWER	10'-0"	18" CONCRETE
PROP 0.0000018534578125" SANITARY SEWER	10'-0"	18" CONCRETE
PROP 0.00000139509375" SANITARY SEWER	10'-0"	18" CONCRETE
PROP 0.0000010463203125" SANITARY SEWER	10'-0"	18" CONCRETE
PROP 0.000000784740625" SANITARY SEWER	10'-0"	18" CONCRETE
PROP 0.000000588555125" SANITARY SEWER	10'-0"	18" CONCRETE
PROP 0.00000044141640625" SANITARY SEWER	10'-0"	18" CONCRETE
PROP 0.0000003310625" SANITARY SEWER	10'-0"	18" CONCRETE
PROP 0.0000002483125" SANITARY SEWER	10'-0"	18" CONCRETE
PROP 0.000000186234375" SANITARY SEWER	10'-0"	18" CONCRETE
PROP 0.000000139690625" SANITARY SEWER	10'-0"	18" CONCRETE
PROP 0.0000001048125" SANITARY SEWER	10'-0"	18" CONCRETE
PROP 0.00000007860625" SANITARY SEWER	10'-0"	18" CONCRETE
PROP 0.000000058959375" SANITARY SEWER	10'-0"	18" CONCRETE
PROP 0.00000004421875" SANITARY SEWER	10'-0"	18" CONCRETE
PROP 0.0000000331640625" SANITARY SEWER	10'-0"	18" CONCRETE
PROP 0.000000024875" SANITARY SEWER	10'-0"	18" CONCRETE
PROP 0.000000018659375" SANITARY SEWER	10'-0"	18" CONCRETE
PROP 0.000000013990625" SANITARY SEWER	10'-0"	18" CONCRETE
PROP 0.00000001049375" SANITARY SEWER	10'-0"	18" CONCRETE
PROP 0.000000007871875" SANITARY SEWER	10'-0"	18" CONCRETE
PROP 0.00000000589609375" SANITARY SEWER	10'-0"	18" CONCRETE
PROP 0.00000000442296875" SANITARY SEWER	10'-0"	18" CONCRETE
PROP 0.0000000033171875" SANITARY SEWER	10'-0"	18" CONCRETE
PROP 0.0000000024890625" SANITARY SEWER	10'-0"	18" CONCRETE
PROP 0.00000000186690625" SANITARY SEWER	10'-0"	18" CONCRETE
PROP 0.000000001399609375" SANITARY SEWER	10'-0"	18" CONCRETE
PROP 0.0000000010499375" SANITARY SEWER	10'-0"	18" CONCRETE
PROP 0.0000000007878125" SANITARY SEWER	10'-0"	18" CONCRETE
PROP 0.00000000059034375" SANITARY SEWER	10'-0"	18" CONCRETE
PROP 0.000000000442640625" SANITARY SEWER	10'-0"	18" CONCRETE
PROP 0.00000000033190625" SANITARY SEWER	10'-0"	18" CONCRETE
PROP 0.000000000249125" SANITARY SEWER	10'-0"	18" CONCRETE
PROP 0.00000000018684375" SANITARY SEWER	10'-0"	18" CONCRETE
PROP 0.0000000001400609375" SANITARY SEWER	10'-0"	18" CONCRETE
PROP 0.00000000010509375" SANITARY SEWER	10'-0"	18" CONCRETE
PROP 0.0000000000788125" SANITARY SEWER	10'-0"	18" CONCRETE
PROP 0.0000000000590609375" SANITARY SEWER	10'-0"	18" CONCRETE
PROP 0.0000000000442796875" SANITARY SEWER	10'-0"	18" CONCRETE
PROP 0.00000000003321875" SANITARY SEWER	10'-0"	18" CONCRETE
PROP 0.0000000000249375" SANITARY SEWER	10'-0"	18" CONCRETE
PROP 0.00000000001870609375" SANITARY SEWER	10'-0"	18" CONCRETE
PROP 0.0000000000140190625" SANITARY SEWER	10'-0"	18" CONCRETE
PROP 0.000000000010529375" SANITARY SEWER	10'-0"	18" CONCRETE
PROP 0.000000000007890625" SANITARY SEWER	10'-0"	18" CONCRETE
PROP 0.0000000000059134375" SANITARY SEWER	10'-0"	18" CONCRETE
PROP 0.00000000000442840625" SANITARY SEWER	10'-0"	18" CONCRETE
PROP 0.00000000000332290625" SANITARY SEWER	10'-0"	18" CONCRETE
PROP 0.0000000000024950625" SANITARY SEWER	10'-0"	18" CONCRETE
PROP 0.000000000001871609375" SANITARY SEWER	10'-0"	18" CONCRETE
PROP 0.00000000000140290625" SANITARY SEWER	10'-0"	18" CONCRETE
PROP 0.0000000000010539375" SANITARY SEWER	10'-0"	18" CONCRETE
PROP 0.000000000000790609375" SANITARY SEWER	10'-0"	18" CONCRETE
PROP 0.00000000000059190625" SANITARY SEWER	10'-0"	18" CONCRETE
PROP 0.000000000000442996875" SANITARY SEWER	10'-0"	18" CONCRETE
PROP 0.000000000000332490625" SANITARY SEWER	10'-0"	18" CONCRETE
PROP 0.0000000000002496875" SANITARY SEWER	10'-0"	18" CONCRETE
PROP 0.000000000000187290625" SANITARY SEWER	10'-0"	18" CONCRETE
PROP 0.000000000000140390625" SANITARY SEWER	10'-0"	18" CONCRETE
PROP 0.00000000000010549375" SANITARY SEWER	10'-0"	18" CONCRETE
PROP 0.000000000000079190625" SANITARY SEWER	10'-0"	18" CONCRETE
PROP 0.000000000000059234375" SANITARY SEWER	10'-0"	18" CONCRETE
PROP 0.0000000000000443040625" SANITARY SEWER	10'-0"	18" CONCRETE
PROP 0.0000000000000332490625" SANITARY SEWER	10'-0"	18" CONCRETE
PROP 0.0000000000000249790625" SANITARY SEWER	10'-0"	18" CONCRETE
PROP 0.0000000000000187390625" SANITARY SEWER	10'-0"	18" CONCRETE
PROP 0.0000000000000140490625" SANITARY SEWER	10'-0"	18" CONCRETE
PROP 0.000000000000010559375" SANITARY SEWER	10'-0"	18" CONCRETE
PROP 0.0000000000000079290625" SANITARY SEWER	10'-0"	18" CONCRETE
PROP 0.00000000000000592390625" SANITARY SEWER	10'-0"	18" CONCRETE
PROP 0.00000000000000443096875" SANITARY SEWER	10'-0"	18" CONCRETE
PROP 0.00000000000000332590625" SANITARY SEWER	10'-0"	18" CONCRETE
PROP 0.00000000000000249796875" SANITARY SEWER	10'-0"	18" CONCRETE
PROP 0.00000000000000187490625" SANITARY SEWER	10'-0"	18" CONCRETE
PROP 0.00000000000000140590625" SANITARY SEWER	10'-0"	18" CONCRETE
PROP 0.0000000000000010569375" SANITARY SEWER	10'-0"	18" CONCRETE
PROP 0.00000000000000079296875" SANITARY SEWER	10'-0"	18" CONCRETE
PROP 0.000000000000000592790625" SANITARY SEWER	10'-0"	18" CONCRETE
PROP 0.0000000000000004431040625" SANITARY SEWER	10'-0"	18" CONCRETE
PROP 0.000000000000000332690625" SANITARY SEWER	10'-0"	18" CONCRETE
PROP 0.000000000000000249890625" SANITARY SEWER	10'-0"	18" CONCRETE
PROP 0.00000000000000018749609375" SANITARY SEWER	10'-0"	18" CONCRETE
PROP 0.000000000000000140690625" SANITARY SEWER	10'-0"	18" CONCRETE
PROP 0.00000000000000010579375" SANITARY SEWER	10'-0"	18" CONCRETE
PROP 0.000000000000000079390625" SANITARY SEWER	10'-0"	18" CONCRETE
PROP 0.0000000000000000592796875" SANITARY SEWER	10'-0"	18" CONCRETE
PROP 0.00000000000000004431140625" SANITARY SEWER	10'-0"	18" CONCRETE
PROP 0.0000000000000000332790625" SANITARY SEWER	10'-0"	18" CONCRETE
PROP 0.0000000000000000249896875" SANITARY SEWER	10'-0"	18" CONCRETE
PROP 0.0000000000000000187590625" SANITARY SEWER	10'-0"	18" CONCRETE
PROP 0.0000000000000000140790625" SANITARY SEWER	10'-0"	18" CONCRETE
PROP 0.000000000000000010589375" SANITARY SEWER	10'-0"	18" CONCRETE
PROP 0.0000000000000000079396875" SANITARY SEWER	10'-0"	18" CONCRETE
PROP 0.00000000000000000592890625" SANITARY SEWER	10'-0"	18" CONCRETE
PROP 0.000000000000000004431540625" SANITARY SEWER	10'-0"	18" CONCRETE
PROP 0.00000000000000000332890625" SANITARY SEWER	10'-0"	18" CONCRETE
PROP 0.00000000000000000249990625" SANITARY SEWER	10'-0"	18" CONCRETE
PROP 0.0000000000000000018759609375" SANITARY SEWER	10'-0"	18" CONCRETE
PROP 0.00000000000000000140890625" SANITARY SEWER	10'-0"	18" CONCRETE
PROP 0.0000000000000000010599375" SANITARY SEWER	10'-0"	18" CONCRETE
PROP 0.00000000000000000079490625" SANITARY SEWER	10'-0"	18" CONCRETE
PROP 0.000000000000000000592896875" SANITARY SEWER	10'-0"	18" CONCRETE
PROP 0.0000000000000000004431640625" SANITARY SEWER	10'-0"	18" CONCRETE
PROP 0.000000000000000000332896875" SANITARY SEWER	10'-0"	18" CONCRETE
PROP 0.000000000000000000249996875" SANITARY SEWER	10'-0"	18" CONCRETE
PROP 0.000000000000000000187599609375" SANITARY SEWER	10'-0"	18" CONCRETE
PROP 0.000000000000000000140990625" SANITARY SEWER	10'-0"	18" CONCRETE
PROP 0.00000000000000000010609375" SANITARY SEWER	10'-0"	18" CONCRETE
PROP 0.000000000000000000079496875" SANITARY SEWER	10'-0"	18" CONCRETE
PROP 0.0000000000000000000592990625" SANITARY SEWER	10'-0"	18" CONCRETE
PROP 0.00000000000000000004431740625" SANITARY SEWER	10'-0"	18" CONCRETE
PROP 0.0000000000000000000332990625" SANITARY SEWER	10'-0"	18" CONCRETE
PROP 0.0000000000000000000249996875" SANITARY SEWER	10'-0"	18" CONCRETE
PROP 0.0000000000000000000187599609375" SANITARY SEWER	10'-0"	18" CONCRETE
PROP 0.0000000000000000000141090625" SANITARY SEWER	10'-0"	18" CONCRETE
PROP 0.000000000000000000010609375" SANITARY SEWER	10'-0"	18" CONCRETE
PROP 0.00000000000000000000794996875" SANITARY SEWER	10'-0"	18" CONCRETE
PROP 0.00000000000000000000592		



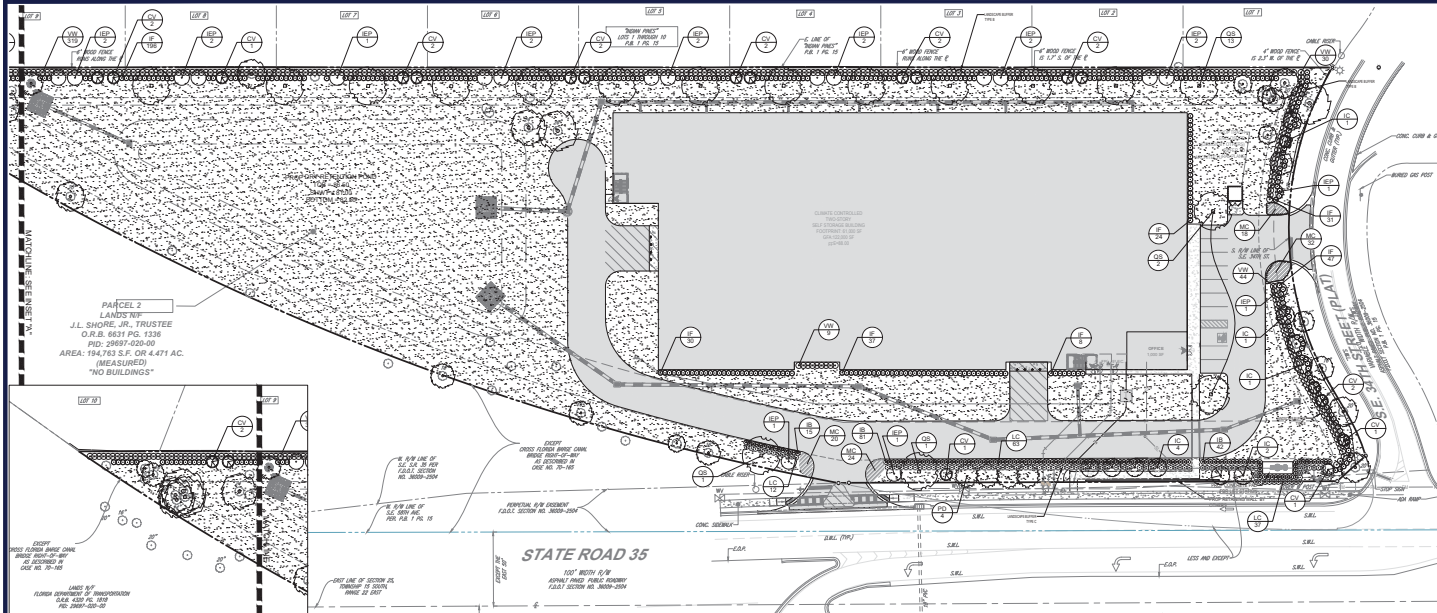












### LANDSCAPE CALCULATIONS

**GENERAL INFORMATION**

0.2 COMMUNITY BUSINESS

194,783 SF

81,341 SF (42.1% OF SITE AREA)

**VEHICULAR USE AREA (VUA)**

81,341 SF (42.1% OF SITE AREA)

**SHADE TREES REQUIRED**

34 SHADE TREES REQUIRED & PROVIDED

2 SHADE TREES REQUIRED & PROVIDED

1 TREE TERMINAL ISLAND \* 2

2 TREE 100' LF OF BUFFER \* 2

36 TREES REQUIRED & PROVIDED

**SHRUBS / GROUNDCOVERS PROVIDED**

**BASE** - STATE HWY 35 R.O.W. - 104.40' LF

**STRIP** - BUFFER REQUIRED

3 PRESERVED EXISTING SHADE TREES

3 TREES PROVIDED

SHRUBS / GROUNDCOVERS PROVIDED

**WEST - ADJACENT TO RESIDENTIAL - 86.34' LF**

**STRIP** - BUFFER REQUIRED

20 SHADE & 30 ORNAMENTAL (2 & 3 PER 100' LF)

1 PRESERVED EXISTING SHADE TREES

13 SHADE & 30 ORNAMENTAL TREES

3 TREES PROVIDED

SHRUBS / GROUNDCOVERS PROVIDED

**ADJUT - ADJACENT TO UNDEVELOPED LAND - 720.19' LF**

**NO BUFFER REQUIRED**

20 SHADE & 30 ORNAMENTAL (2 & 3 PER 100' LF)

1 PRESERVED EXISTING SHADE TREES

13 SHADE & 30 ORNAMENTAL TREES

3 TREES PROVIDED

SHRUBS / GROUNDCOVERS PROVIDED

**PARKING & VEHICULAR USE LANDSCAPING**

17 TREES PER TERMINAL ISLAND

1 TREE PROVIDED PER TERMINAL ISLAND

**BUILDING LANDSCAPING**

LANDSCAPE TREES PROVIDED ALONG 60% OF THE PUBLIC VIEW SIDES OF ALL PROPOSED STRUCTURES.

5 FT MINIMUM WIDTH PROVIDED.

### PLANTING LEGEND

SYMBOL	SCIENTIFIC NAME	COMMON NAME	MIN. SIZE	SPACING	QUANTITY	REMARKS
CV	Chenopodium virginicum	Fringe Tree	6" Ht. min. x 42" spread	per plant	21	NATIVE
IC	Iron Cedar	Native	8" Ht. min. x 42" spread	per plant	8	NATIVE
SD	Sea Island Sand Pine	Sea Island Holly	14" Ht. min. x 3" spread	per plant	70	NATIVE
PD	Pinus edulis	Slack Pine	14" Ht. min. x 3" spread	per plant	4	NATIVE
US	Quercus laevis	Shoestring Oak	14" Ht. min. x 3" spread	per plant	17	NATIVE

SYMBOL	SCIENTIFIC NAME	COMMON NAME	MIN. SIZE	SPACING	QUANTITY	REMARKS
SB	Sea Island Sand Pine	Sea Island Holly	3" gal. 18" x 20" Ht.	32" o.c.	133	NATIVE
SP	Boronia caroliniana	Florida Boronia	3" gal. 18" x 20" Ht.	36" o.c.	373	NATIVE
LIC	Limonium carolinianum	Sea Island Holly	3" gal. 18" x 20" Ht.	36" o.c.	112	NATIVE
VW	Viburnum cuneatum	Walker Viburnum	3" gal. 18" x 20" Ht.	36" o.c.	402	NATIVE

SYMBOL	SCIENTIFIC NAME	COMMON NAME	MIN. SIZE	SPACING	QUANTITY	REMARKS
MC	Muhlenbergia capensis	Pine Mulch Grass	3" gal. 18" x 20" Ht.	36" o.c.	94	NATIVE

SYMBOL	SCIENTIFIC NAME	COMMON NAME	MIN. SIZE	SPACING	QUANTITY	REMARKS
TR	Thunbergia alterniflora	Flamingo St. Augustine	Soil	...	...	EXISTING TREE TO REMAIN

### MULCHES

EXISTING TREE TO REMAIN

### ROOT BARRIERS

THE CONTRACTOR SHALL INSTALL ROOT BARRIERS NEAR ALL NEWLY PLANTED TREES THAT ARE LOCATED WITHIN FOUR (4) FEET OF UNDERGROUND UTILITIES. ROOT BARRIERS SHALL BE TYPICALLY 18" DEEP AND 24" WIDE. BARRIERS SHALL BE INSTALLED IMMEDIATELY ADJACENT TO UNDERGROUND UTILITIES. THE CONTRACTOR SHALL BE RESPONSIBLE FOR THE INSTALLATION OF ROOT BARRIERS AT A TYPE THAT COMPLETELY OBSCURES THE UTILITY.

### LANDSCAPE COMPLETION INSPECTION (Sec. 6.8.12)

UPON COMPLETION OF THE INSTALLATION, THE CONTRACTOR SHALL REQUEST AN INSPECTION BY THE DESIGN LANDSCAPE ARCHITECT. A LANDSCAPE AND IRRIGATION SCHEDULE CERTIFICATION SHALL BE ISSUED AND SIGNED BY THE DESIGN LANDSCAPE ARCHITECT AND SUBMITTED TO THE COUNTY LANDSCAPE ARCHITECT PRIOR TO THE ISSUANCE OF A CERTIFICATE OF OCCUPANCY.

- ### GENERAL PLANTING NOTES
- ALL PLANT MATERIAL SHALL CONFORM TO THE STANDARDS FOR FLORIDA NO. 1, OR BETTER BASED ON THE FLORIDA DEPARTMENT OF AGRICULTURE AND CONSUMER SERVICES PUBLICATION, FLORIDA GRASSES AND STANDARDS FOR NURSERY PLANTS, CURRENT ADOPTED EDITION.
  - THE GENERAL CONTRACTOR IS RESPONSIBLE FOR VERIFYING ALL EXISTING UTILITIES EXCEPT WHERE NOTED TO REMAIN, BEFORE STARTING WORK. THE LANDSCAPE CONTRACTOR SHALL VERIFY THAT THE GRADE OF ALL LANDSCAPE AREAS ARE WITHIN +/- 1" OF FINISH GRADE. THE LANDSCAPE CONTRACTOR SHALL NOTIFY THE OWNER IMMEDIATELY SHOULD ANY DISCREPANCIES BE NOTED. SEE SPECIFICATIONS FOR HOW TO DETECT DISCREPANCIES ON SURFACE AREA AND PLANTING BED PREPARATION.
  - CONTRACTOR AND MAINTENANCE PERSONNEL SHALL BE RESPONSIBLE FOR THE PROTECTION OF ALL EXISTING UTILITIES AND CONDUITS. ALL MAINTENANCE PERSONNEL SHALL BE IDENTIFIED BY THE GEOTECHNICAL REPORT. ALL LANDSCAPE AREAS SHALL HAVE POSITIVE DRAINAGE AWAY FROM STRUCTURES AT THE MINIMUM GRADE SPECIFIED IN THE REPORT, AND AREAS OF POTENTIAL POONDING SHALL BE REGRADED TO END WITH THE SURROUNDING GRADES AND EXISTING FINISHING POTENTIAL. SHOULD ANY CONFLICTS ARISE, DISCREPANCIES ARISE BETWEEN THE GRADING PLANS, GEOTECHNICAL REPORT, THESE NOTES, AND ACTUAL CONDITIONS, THE CONTRACTOR SHALL IMMEDIATELY BRING SUCH ISSUES TO THE ATTENTION OF THE LANDSCAPE ARCHITECT, GENERAL CONTRACTOR, AND OWNER.
  - ENSURE THAT THE GRADE IN SPURVE AREAS SHALL BE 2" BELOW FINISH GRADE AT THE INSTALLED SOIL ADJUSTMENTS, AND 2" BELOW FINISH GRADE IN SOIL AREAS AFTER INSTALLING SOIL ADJUSTMENTS. BEDS COVER WITHIN 6" OF CONCRETE WALLS AND CURBS SHALL NOT PROTRUDE ABOVE THE FINISH SURFACE OF THE WALLS AND CURBS. BEDS SHALL COVER WITHIN 6" OF WALLS SHALL BE AT LEAST 7" DEEPER THAN THE TOP OF WALL.
  - INSTALL MULCH TOP DRESSING, TYPE AND DEPTH PER MULCH NOTE. ALL PLANTING BEDS AND TREE RINGS, DO NOT INSTALL MULCH WITHIN 6" OF TREE ROOT FLANGE. ALL PLANT LOCATIONS ARE DIAGRAMMATIC. ACTUAL LOCATIONS SHALL BE VERIFIED WITH THE LANDSCAPE ARCHITECT OR DESIGNER PRIOR TO PLANTING. THE LANDSCAPE CONTRACTOR SHALL ENSURE THAT ALL REQUIREMENTS OF THE PERMITTING AUTHORITY ARE MET (E.G. MINIMUM PLANT QUANTITIES, PLANTING METHODS, TREE PROTECTION METHODS, ETC.).
  - THE LANDSCAPE CONTRACTOR IS RESPONSIBLE FOR DETERMINING PLANT QUANTITIES. PLANT QUANTITIES SHOWN ON LEGENDS AND CALLOUTS ARE FOR GENERAL INFORMATION ONLY. IN THE EVENT OF A DISCREPANCY BETWEEN THE PLANS AND THE PLANT LEGEND, THE PLANT QUANTITY AS SHOWN ON THE PLAN FOR INDIVIDUAL SPECIES OR CALLOUT FOR GROUNDCOVER PATTERNS SHALL TAKE PRECEDENCE.
  - NO SUBSTITUTIONS OF PLANT MATERIAL SHALL BE ALLOWED WITHOUT THE WRITTEN PERMISSION OF THE LANDSCAPE ARCHITECT. IF SOME OF THE PLANTS ARE NOT AVAILABLE, THE LANDSCAPE CONTRACTOR SHALL BE RESPONSIBLE FOR THE MAINTENANCE OF ALL WORK SHOWN ON THESE PLANS FOR 90 DAYS BEYOND FINAL ACCEPTANCE OF ALL LANDSCAPE WORK BY THE OWNER. LANDSCAPE MAINTENANCE SHALL INCLUDE REGULAR SITE VISITS FOR THE FOLLOWING ACTIONS (AS APPROPRIATE): PROPER PRUNING, REPLACING OF TREES, REPLACING OF PLANTS THAT HAVE SET BACK, REGRADING AREAS WHICH HAVE NOT GRADUATED WELL, TREATING FOR INSECTS AND DISEASES. REPLACEMENT OF MULCH. REMOVAL OF LITTER. REMOVAL OF THE IRRIGATION SYSTEM DUE TO PLANT MATURITY AND/OR SHADOWING. AND THE APPROPRIATE WATERING OF ALL PLANTS. THE LANDSCAPE CONTRACTOR SHALL MAINTAIN THE IRRIGATION SYSTEM IN PROPER WORKING ORDER, WITH SCHEDULING ADJUSTMENTS BY SEASON TO MAINTAIN WATER CONSERVATION.
  - TO ACHIEVE FINAL ACCEPTANCE AT THE END OF THE MAINTENANCE PERIOD, ALL OF THE FOLLOWING CONDITIONS MUST OCCUR:
    - THE LANDSCAPE SHALL SHOW ACTIVE HEALTHY GROWTH WITH EXCEPTABLE LOSS FOR SEASONAL DORMANCY. ALL PLANTS NOT MEETING THIS CONDITION SHALL BE REPLACED AND REPLACED BY HEALTHY PLANT MATERIAL PRIOR TO FINAL ACCEPTANCE.
    - ALL LANDSCAPE SHALL BE CLEANED PRIOR TO FINAL ACCEPTANCE.
    - SOILED AREAS MUST BE RESEDED PRIOR TO FINAL ACCEPTANCE. ALL SOILED 2" OR DEEPER AREAS LARGER THAN THREE (3) SQUARE YARDS MUST BE RESEDED PRIOR TO FINAL ACCEPTANCE. ALL SOILED 2" OR DEEPER AREAS SHALL BE NEATLY MOWED.
  - CONTRACTOR SHALL BE RESPONSIBLE FOR OBTAINING APPLICABLE LANDSCAPING AND/OR IRRIGATION INSTALLATION PERMITS WHERE REQUIRED BY THE LOCAL JURISDICTION HAVING AUTHORITY.
  - SEE SPECIFICATIONS AND DETAILS FOR FURTHER REQUIREMENTS.
- ### IRRIGATION SYSTEM
- AN AUTOMATIC IRRIGATION SYSTEM SHALL BE INSTALLED AND OPERATIONAL BY THE TIME OF FINAL INSPECTION. THE ENTIRE IRRIGATION SYSTEM SHALL BE INSTALLED BY A LICENSED AND QUALIFIED PROFESSIONAL CONTRACTOR.
  - THE IRRIGATION SYSTEM WILL OPERATE ON POTABLE WATER, AND THE SYSTEM WILL HAVE APPROPRIATE BACKFLOW PREVENTION DEVICES INSTALLED TO PREVENT CONTAMINATION OF THE POTABLE SOURCE.
  - ALL NON-SOIL PLANTING SHALL BE DRIPP IRRIGATED. SOILED AND SEEDED AREAS SHALL BE IRRIGATED WITH SPRAY OR ROTOR HEADS AT 10% HEAD-TO-HEAD COVERAGE.
  - ALL PLANTS SHOWN AS SINGLE HYDROZONE CHARACTERISTICS SHALL BE PLACED ON A VALVE DEDICATED TO PROVIDE THE NECESSARY WATER REQUIREMENTS SPECIFIC TO THAT HYDROZONE.
  - THE IRRIGATION SYSTEM SHALL BE DESIGNED AND INSTALLED TO THE MAXIMUM EXTENT POSSIBLE, TO CONSERVE WATER AND WITH THE FOLLOWING CONDITIONS AND SYSTEMS: MATCHES PRECISION RATE TECHNOLOGY FOR ROTOR AND SPRAY HEAD (WHEREVER POSSIBLE), HIGH SENSORS, AND MULTI-PROGRAM COMPUTORIZED IRRIGATION CONTROLLERS FEATURING SENSORY INPUT CAPABILITIES.

**BOHLER**  
 REGIONAL AND NATIONAL CONSULTING  
 LANDSCAPE ARCHITECTS AND PLANNERS  
 11000 W. BOYD BLVD., SUITE 100  
 TAMPA, FL 33607

**REVISIONS**

REV.	DATE	COMMENT

**ISSUED FOR MUNICIPAL & AGENCY REVIEW & APPROVAL**

PROJECT NO.: PL201918-01  
 SHEET NO.: 01  
 CHECKED BY: JLM  
 DATE: 01/10/2020  
 PROJECT: **SITE CONSTRUCTION PLANS**

FOR: **CLIENT**

STORAGE CAP (EASNO) L.C.  
 3584 SE 56TH AVE  
 MARION COUNTY  
 SOCIAL FL 32805  
 833.715.5352

**BOHLER**  
 11000 W. BOYD BLVD., SUITE 100  
 TAMPA, FLORIDA 33607  
 Phone: (813) 812-1100  
 Fax: (813) 812-4101  
 Website: www.bohler.com

Scale 1" = 30'

NOT: PRINTED DRAWING SET  
 MAY BE MADE, COPIED, REPRODUCED  
 OR TRANSMITTED IN ANY FORM OR BY ANY MEANS  
 WITHOUT THE WRITTEN PERMISSION OF BOHLER

**EVERGREEN**  
 11000 W. BOYD BLVD., SUITE 100  
 TAMPA, FL 33607  
 (813) 812-1100  
 www.evergreen.com

**LANDSCAPE PLAN**

SHEET NO.: **LP-1**

ORIG. DATE: 11/05/2013

