



SUBMITTAL SUMMARY REPORT MassGrade-000107-2025

PLAN NAME: Calesa Township- Mass Grading Phase 4	LOCATION: 5575 SW 67TH AVENUE RD OCALA,
APPLICATION DATE: 12/04/2025	PARCEL: 35300-000-14
DESCRIPTION: Mass grading of approximately 540 acres and includes construction of 16 DRA's.	

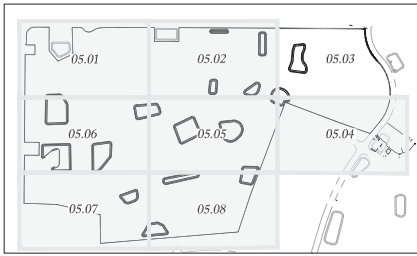
CONTACTS	NAME	COMPANY
Applicant	Tillman Associates	Tillman & Associates Engineering, LLC
Applicant	Tillman Associates	Tillman & Associates Engineering, LLC
Engineer of Record	Cameron Hines	Tillman and Associates
Engineer of Record	Tillman Associates	Tillman & Associates Engineering, LLC
Engineer of Record	Tillman Associates	Tillman & Associates Engineering, LLC

CONDITION	DESCRIPTION	CREATED BY	CREATED ON	COMMENTS	SATISFIED?
Conditional Comment(s)	Utility Provider Review	Heather Proctor	01/13/2026	The project is located within the Bay Laurel Center Community Development District. The utility provider must confirm that they have reviewed the mass grading plans and have no concerns regarding potential utility conflicts.	No

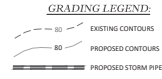
SUBMITTAL	STARTED	DUE	COMPLETE	STATUS
OCE: Plan Review (DR) v.4	04/24/2026	05/01/2026	05/05/2026	Approved
OCE: Plan Review (DR) v.3	03/26/2026	04/02/2026	04/07/2026	Requires Re-submit
OCE: Plan Review (DR) v.2	02/24/2026	03/03/2026	03/10/2026	Requires Re-submit
OCE: Plan Review (DR) v.1	12/30/2025	01/14/2026	01/29/2026	Requires Re-submit

SUBMITTAL DETAILS

OCE: Plan Review (DR) v.4					
ITEM REVIEW NAME (DEPARTMENT)	ASSIGNED TO	DUE	COMPLETE	STATUS	
911 Management (DR) (911 Management)	Kristie Wright	05/01/2026	04/24/2026	Not Required	
Environmental Health (Plans) (Environmental Health)	Evan Searcy	05/01/2026	05/01/2026	Approved	
Fire Marshal (Plans) (Fire)		05/01/2026	04/24/2026	Pending Assignment	
Growth Services Planning & Zoning (DR) (GS Planning and Zoning)	Kenneth Odom	05/01/2026	05/01/2026	Approved	
Landscape (Plans) (Parks and Recreation)	Susan Heyen	05/01/2026	04/27/2026	Approved	
OCE Design (Plans) (Office of the County Engineer)	Gerald Koch	05/01/2026	04/29/2026	Approved	
OCE Property Management (Plans) (Office of the County Engineer)		05/01/2026	04/27/2026	Not Required	
<i>Comments</i>	ROW is not a reviewer for this type of plan				
OCE Stormwater (Permits & Plans) (Office of the County Engineer)	Alexander Turnipseed	05/01/2026	04/27/2026	Informational	
<i>Comments</i>	Please provide a copy of the NPDES permit or NOI as well as the district permit prior to construction.				
OCE Survey (Plans) (Office of the County Engineer)	Theresa Smail	05/01/2026	04/28/2026	Approved	
OCE Traffic (Permits & Plans) (Office of the County Engineer)	Chris Zeigler	05/01/2026	04/26/2026	Approved	
<i>Corrections</i>	2.12.30 - Construction entrance (Resolved) - 2.12.30 - Construction entrance: Show the construction entrance and provide a route plan.				
Utilities (OCE Plans) (Utilities)	Heather Proctor	05/01/2026	04/28/2026	Approved	
<i>Comments</i>	Previously approved. Bay Laurel Utilities service area - defer to that utility to provide any conflicts with plan.				

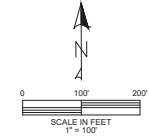


KEY MAP
1" = 1200' SCALE

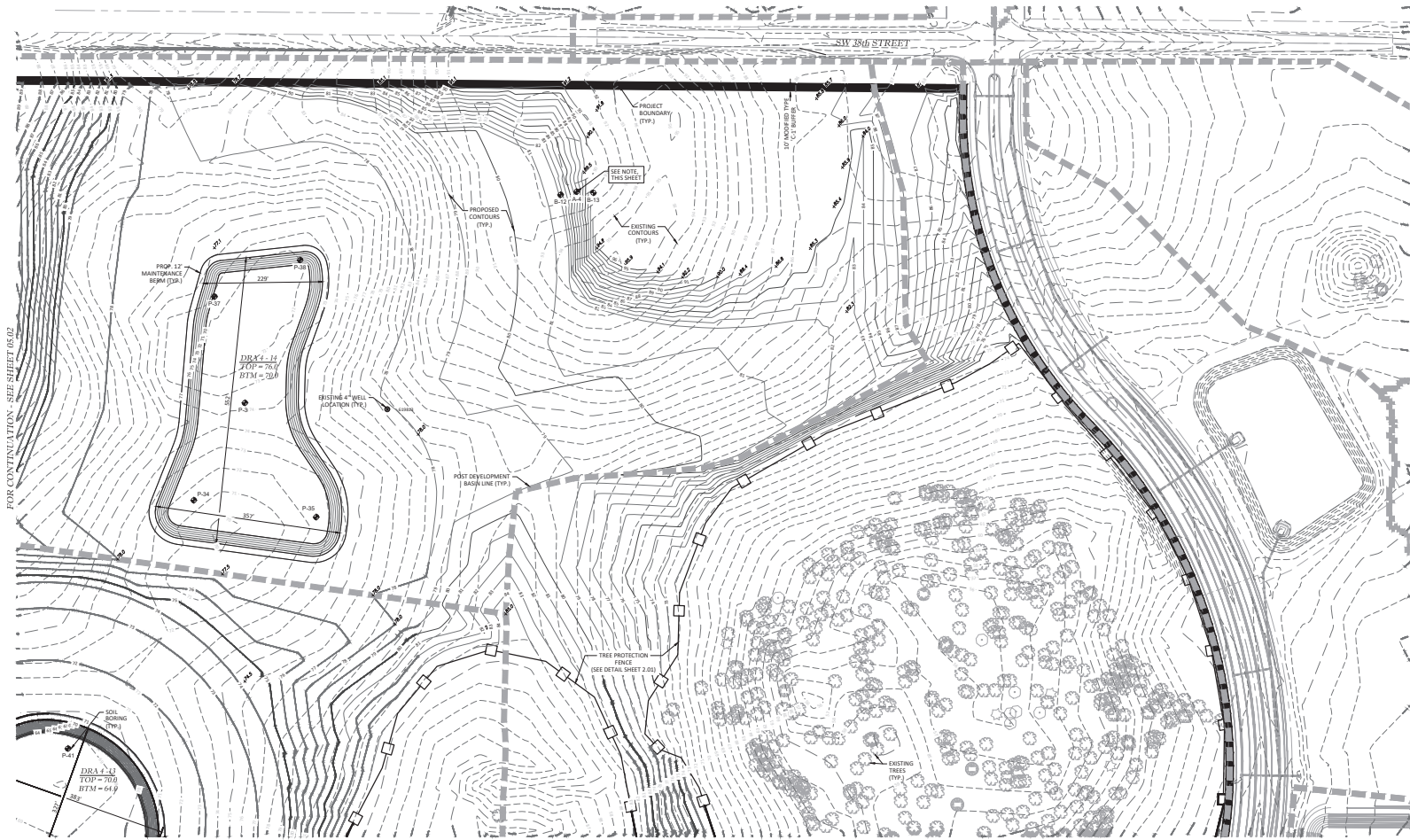


- NOTES:**
- SEE GEO-TECH, INC. REPORT NO. 22-1167-4133.3 FOR EVALUATION AND RECOMMENDATIONS. CONTRACTOR TO OBTAIN TESTING AND RECOMMENDATIONS FOR REMEDIATION AND PROVIDE WITH AS-BUILTS. A CERTIFIED LETTER FROM THE GEOTECHNICAL ENGINEER MUST BE PROVIDED WITH THE AS-BUILTS.

NOTE:
EXISTING WELLS WILL BE ABANDONED BY A FLORIDA LICENSED WATER WELL CONTRACTOR IN ACCORDANCE WITH RULE 6D-3.03(2), F.A.C.



MARION COUNTY APPROVAL STAMP



FOR CONTINUATION - SEE SHEET 05.02

FOR CONTINUATION - SEE SHEET 05.04

Tillman & Associates
ENGINEERING, LLC
1720 SE 16th Ave, Bldg 100, Ocala, FL 34471
Office: (352) 367-4540 Fax: (352) 367-4545
CERTIFICATE OF AUTHORIZATION #28736

DATE	REVISIONS

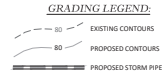
MASS GRADING PHASE 4
CALUSA TOWNSHIP
MARION COUNTY, FLORIDA

DATE: 4/17/2025
DRAWN BY: AS
CHECKED BY: CMH
JOB NO. 25-0078

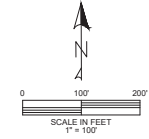
SHT. 05.03



KEY MAP
1" = 1200' SCALE

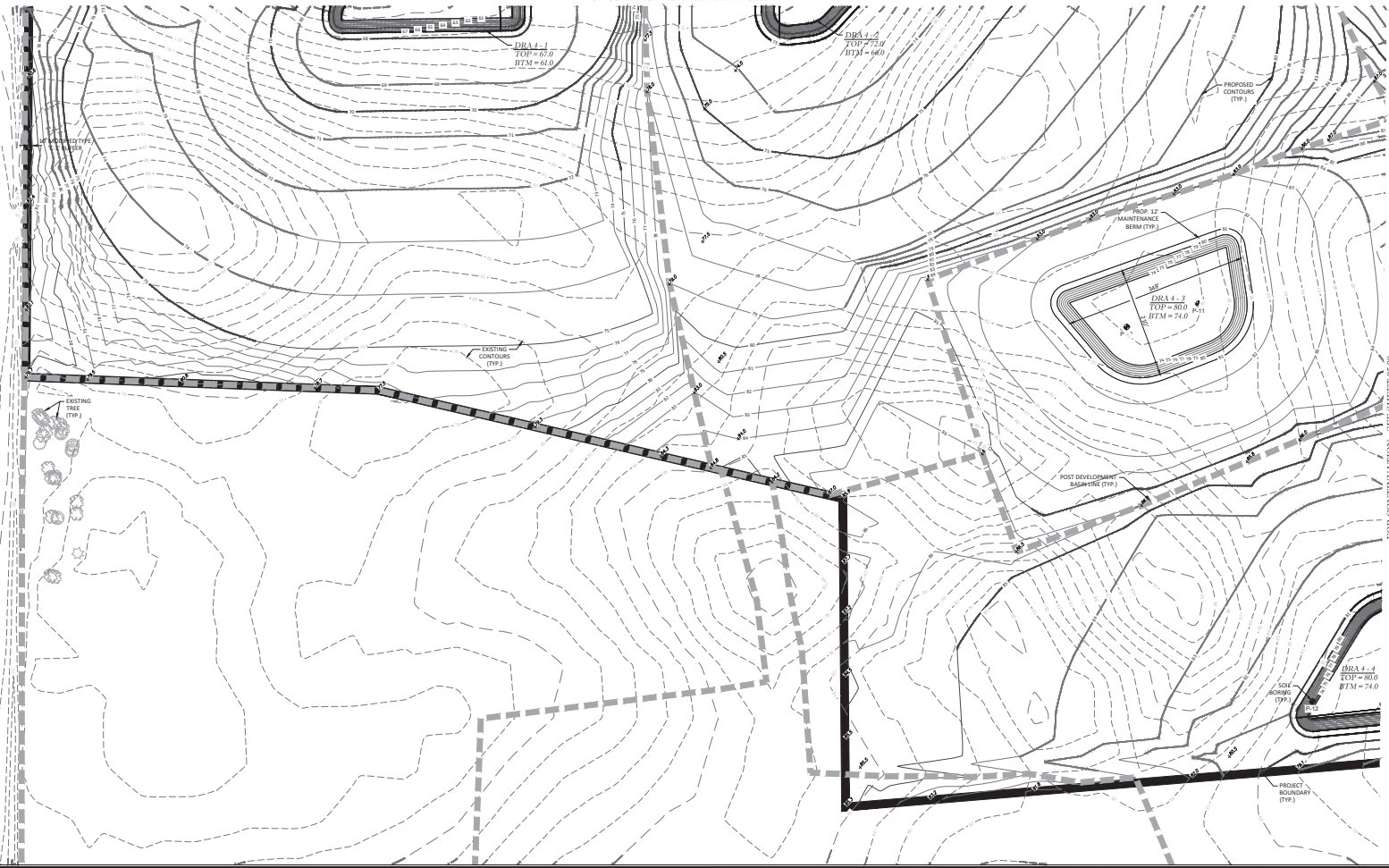


NOTE:
EXISTING WELLS WILL BE ABANDONED BY A FLORIDA LICENSED WATER WELL CONTRACTOR IN ACCORDANCE WITH RULE 40D-3.13(2), F.A.C.



FOR CONTINUATION - SEE SHEET 05.06

MARION COUNTY APPROVAL STAMP



FOR CONTINUATION - SEE SHEET 05.08

Tillman & Associates
ENGINEERING, LLC
1720 SE 16th Ave, Box 100, Ocala, FL 34471
Office: (352) 367-4540 Fax: (352) 367-4545
CERTIFICATE OF AUTHORIZATION #28736

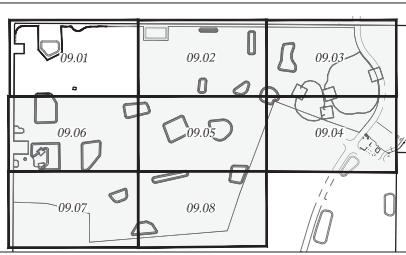
DATE	REVISIONS

MASS GRADING PHASE 4
CALUSA TOWNSHIP
MARION COUNTY, FLORIDA

GRADING PLAN

DATE: 4/17/2025
DRAWN BY: AS
CHECKED BY: CAH
JOB NO.: 25-0078

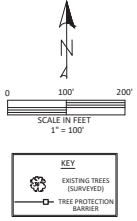
SHT. 05.07



KEY MAP
1" = 100' SCALE



MARION COUNTY APPROVAL STAMP



FOR CONTINUATION - SEE SHEET 09.02

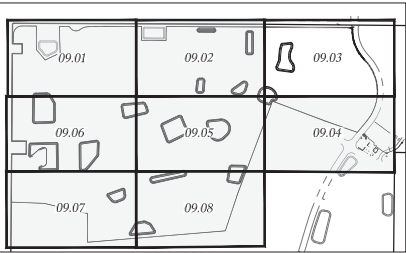
Tilman & Associates
ENGINEERING, LLC
CIVIL ENGINEERING - PLANNING - LANDSCAPE ARCHITECTURE - ENVIRONMENTAL
1720 SE 15th Ave, Suite 100, Ocala, FL 34471
PHONE: 352.349.8645
CERTIFICATION OF AUTHORIZATION: 267616

DATE	REVISIONS

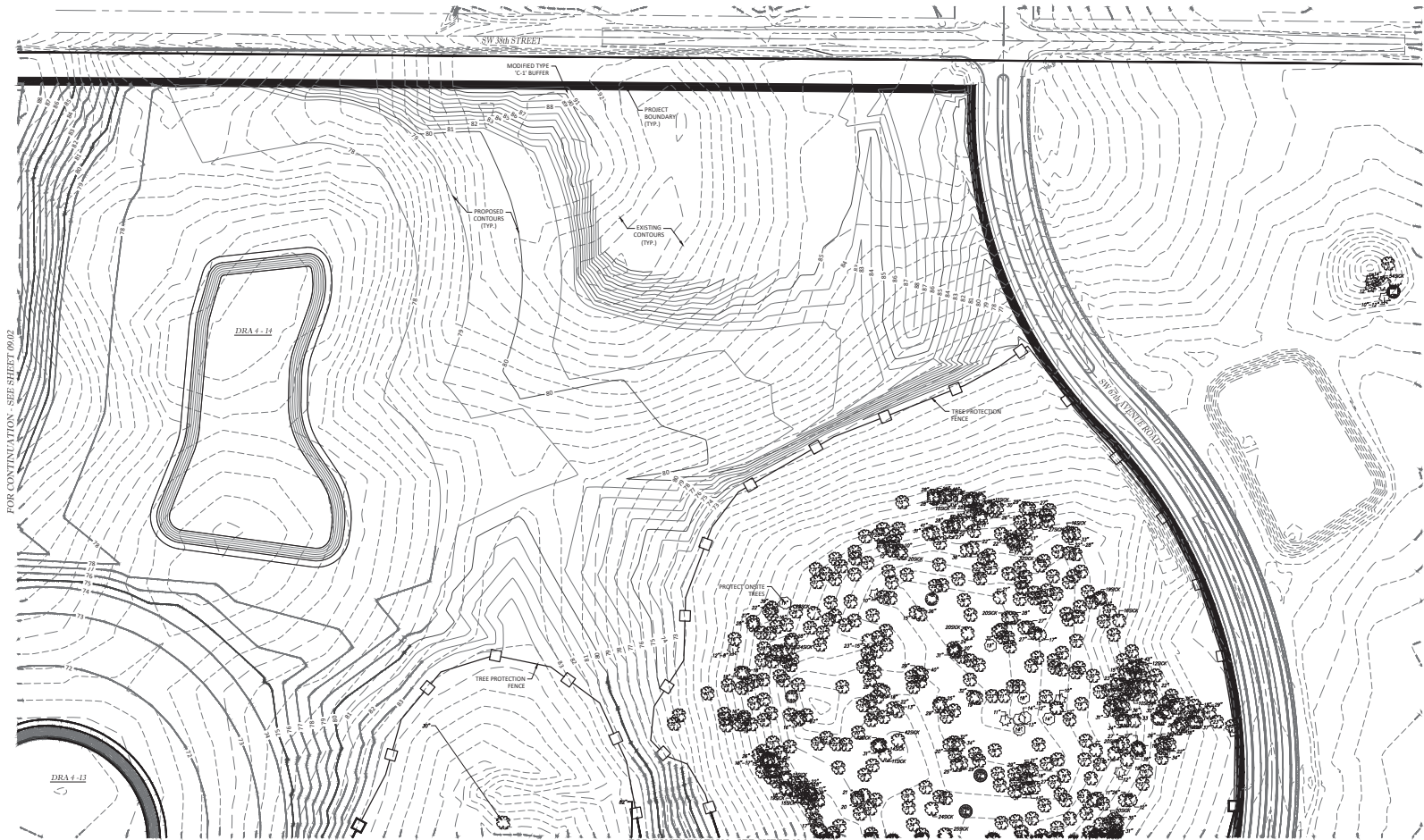
MASS GRADING PHASE 4
CALUSA TOWNSHIP
MARION COUNTY, FLORIDA
TREE PRESERVATION PLAN

DATE: 4/17/2025
DRAWN BY: AS
CHECKED BY: CMH
JOB NO.: 25-0078

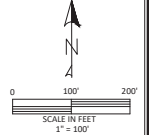
SHT. 09.01



KEY MAP
1" = 100' SCALE



MARION COUNTY APPROVAL STAMP



KEY	
	EXISTING TREES (SHOWN)
	TREE PROTECTION BARRIER

FOR CONTINUATION - SEE SHEET 09.02

FOR CONTINUATION - SEE SHEET 09.04

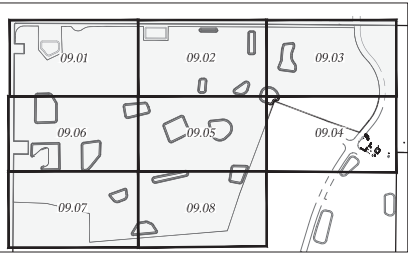
Tilman & Associates
ENGINEERING, LLC
CIVIL ENGINEERING - PLANNING - LANDSCAPE ARCHITECTURE - ENVIRONMENTAL
1720 SE 17th Ave, Suite 100, Ocala, FL 34471
TEL: 352.349.1111 FAX: 352.349.1115
CERTIFICATION OF AUTHORIZATION #26756

DATE	REVISIONS

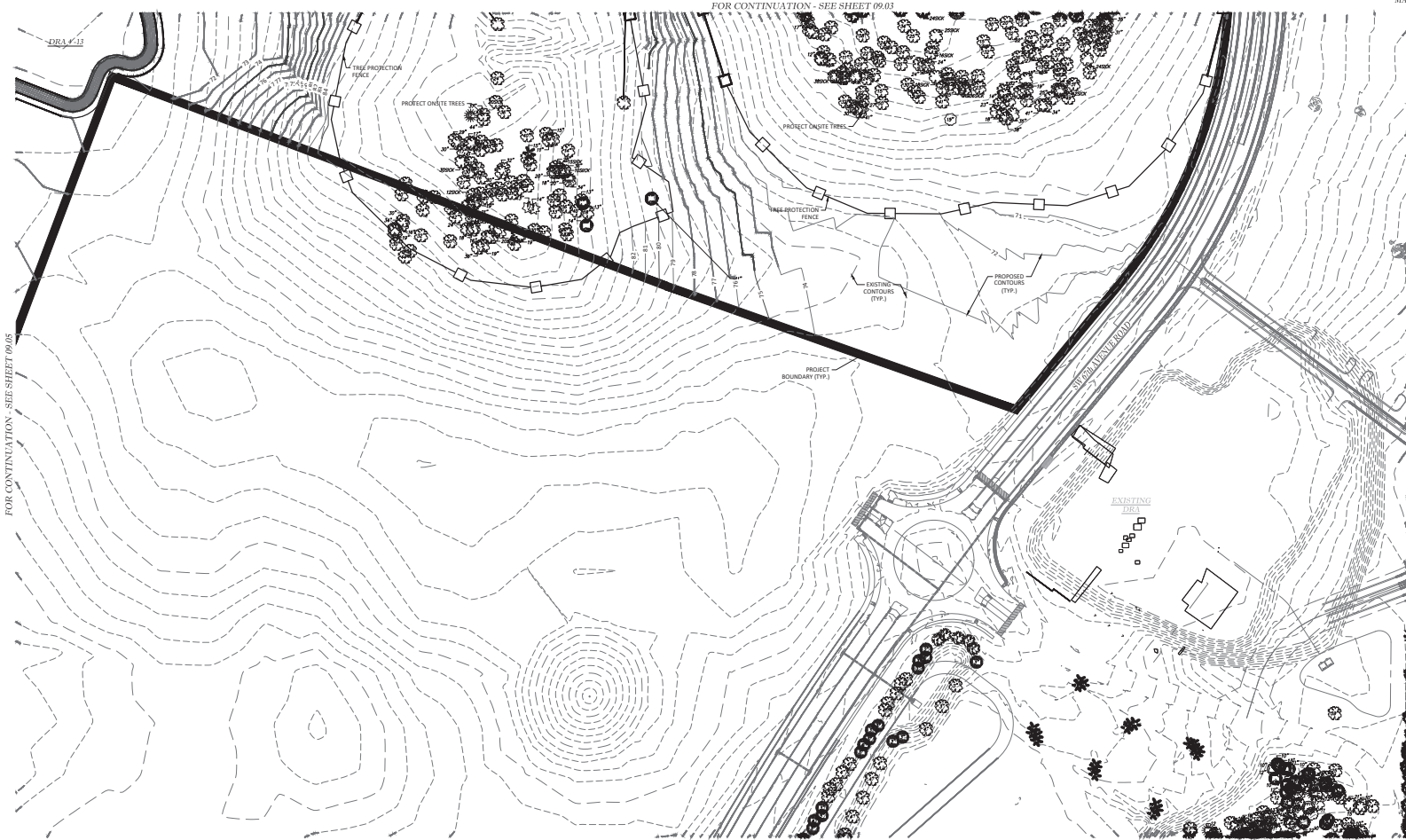
MASS GRADING PHASE 4
CALUSA TOWNSHIP,
MARION COUNTY, FLORIDA
TREE PRESERVATION PLAN

DATE: 4/17/2025
DRAWN BY: AS
CHECKED BY: CMH
JOB NO.: 25-0072

SHT. 09.03



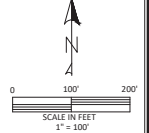
KEY MAP
1" = 100' SCALE



FOR CONTINUATION - SEE SHEET 09.03

FOR CONTINUATION - SEE SHEET 09.01

MARION COUNTY APPROVAL STAMP



Tilman & Associates
ENGINEERING, LLC
CIVIL ENGINEERING - PLANNING - LANDSCAPE ARCHITECTURE - ENVIRONMENTAL
3720 SE 17th Ave, Suite 100, Ocala, FL 34471
TEL: 352.349.4471
FAX: 352.349.4475
CERTIFICATION # AH00000266

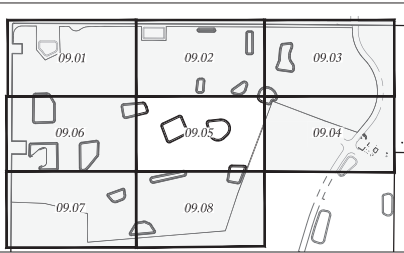
DATE	REVISIONS

MASS GRADING PHASE 4
CALUSA TOWNSHIP
MARION COUNTY, FLORIDA

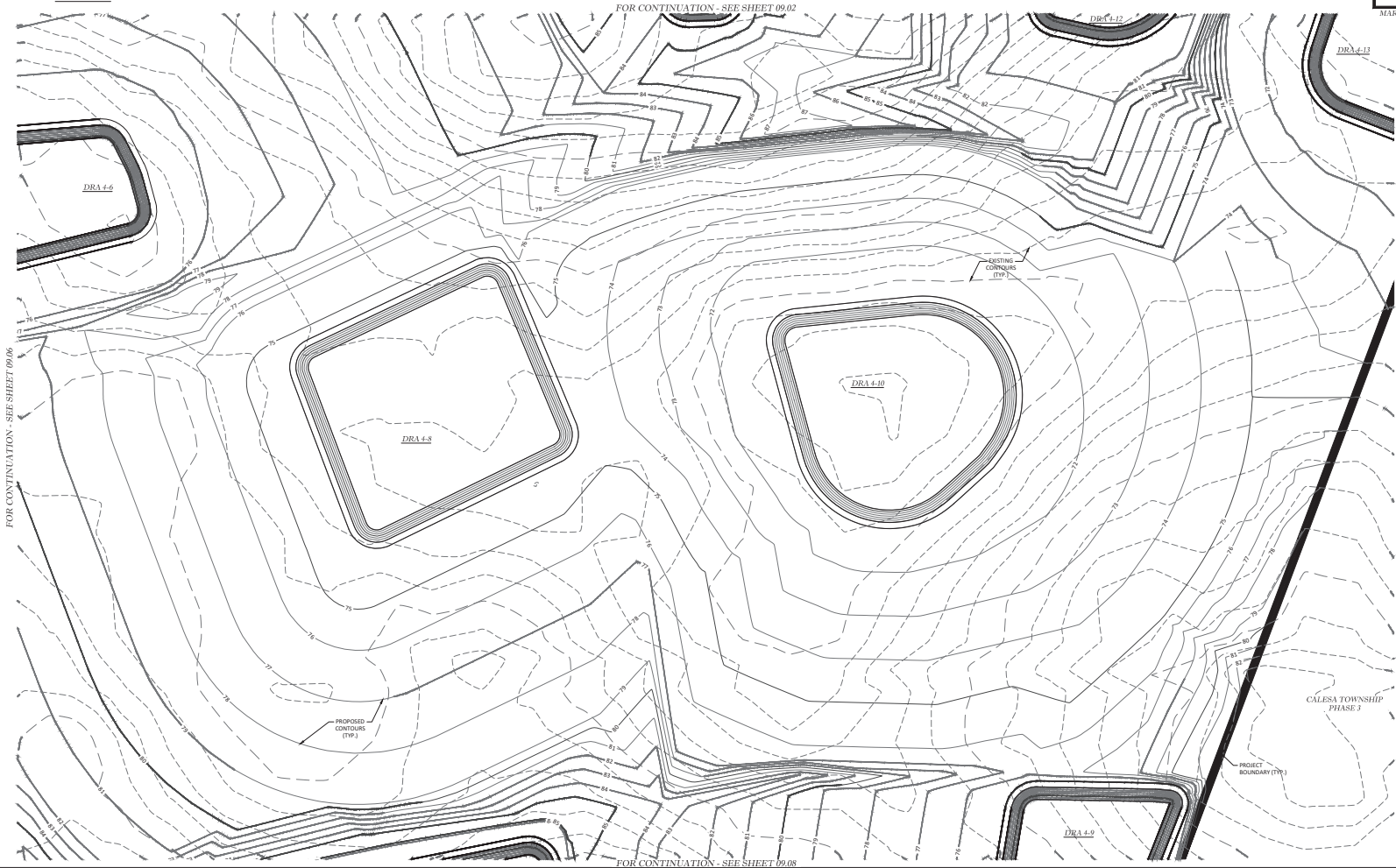
TREE PRESERVATION PLAN

DATE: 4/17/2025
DRAWN BY: AS
CHECKED BY: CAH
JOB NO.: 25-0072

SHT. 09.04

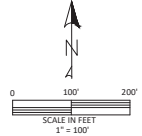


KEY MAP
1"=100' SCALE



FOR CONTINUATION - SEE SHEET 09.02

MARION COUNTY APPROVAL STAMP



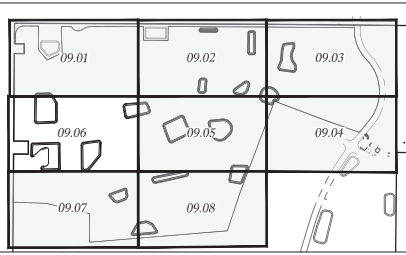
Tilman & Associates
ENGINEERING, LLC
CIVIL ENGINEERING - PLANNING - LANDSCAPE ARCHITECTURE - ENVIRONMENTAL
1720 SE 17th Ave, Suite 100, Ocala, FL 34471
TEL: 352.236.8945
CERTIFICATION AUTHORIZATION #28756

DATE	REVISIONS

MASS GRADING PHASE 4
CALUSA TOWNSHIP
MARION COUNTY, FLORIDA
TREE PRESERVATION PLAN

DATE: 4/17/2025
DRAWN BY: AS
CHECKED BY: CAH
JOB NO.: 25-0072

SHT. 09.05

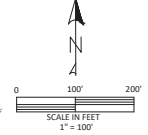


KEY MAP
1" = 100' SCALE



FOR CONTINUATION - SEE SHEET 09.01

MARION COUNTY APPROVAL STAMP



REVISIONS

DATE

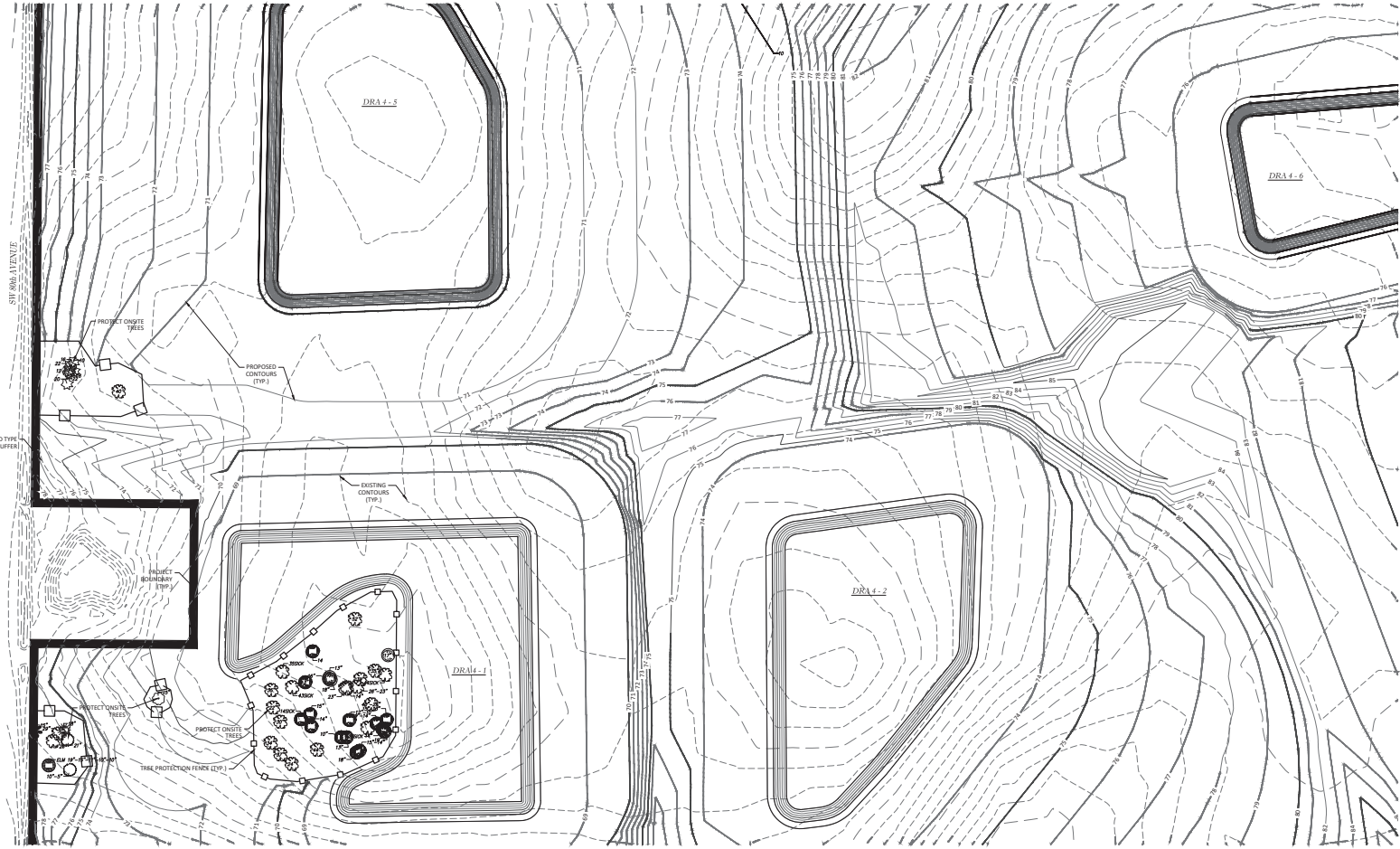
MASS GRADING PHASE 4
CALUSA TOWNSHIP
MARION COUNTY, FLORIDA

TREE PRESERVATION PLAN

DATE: 4/17/2025
DRAWN BY: AS
CHECKED BY: CMH
JOB NO.: 25-0072

SHT. 09.06

Tilman & Associates
ENGINEERING, LLC
CIVIL ENGINEERING - PLANNING - LANDSCAPE ARCHITECTURE - ENVIRONMENTAL
1720 SE 15th Ave, Suite 100, Ocala, FL 34471
TEL: 352.349.1111
FAX: 352.349.1115
CERTIFICATION OF AUTHORIZATION #28726



FOR CONTINUATION - SEE SHEET 09.07

FOR CONTINUATION - SEE SHEET 09.05

Tilman & Associates
 ENGINEERING, LLC
 CIVIL ENGINEERING - PLANNING - LANDSCAPE ARCHITECTURE - ENVIRONMENTAL
 CERTIFICATION OF AUTHORIZATION #22756
 OFFICE: (352) 387-4500 Fax: (352) 387-4545
 1720 SE 16th Ave. Bldg 100, Ocala, FL 34471

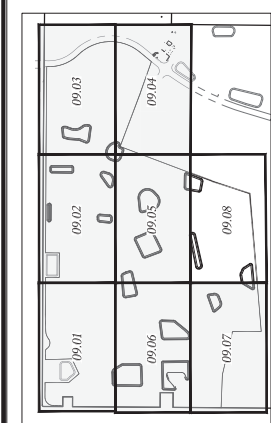
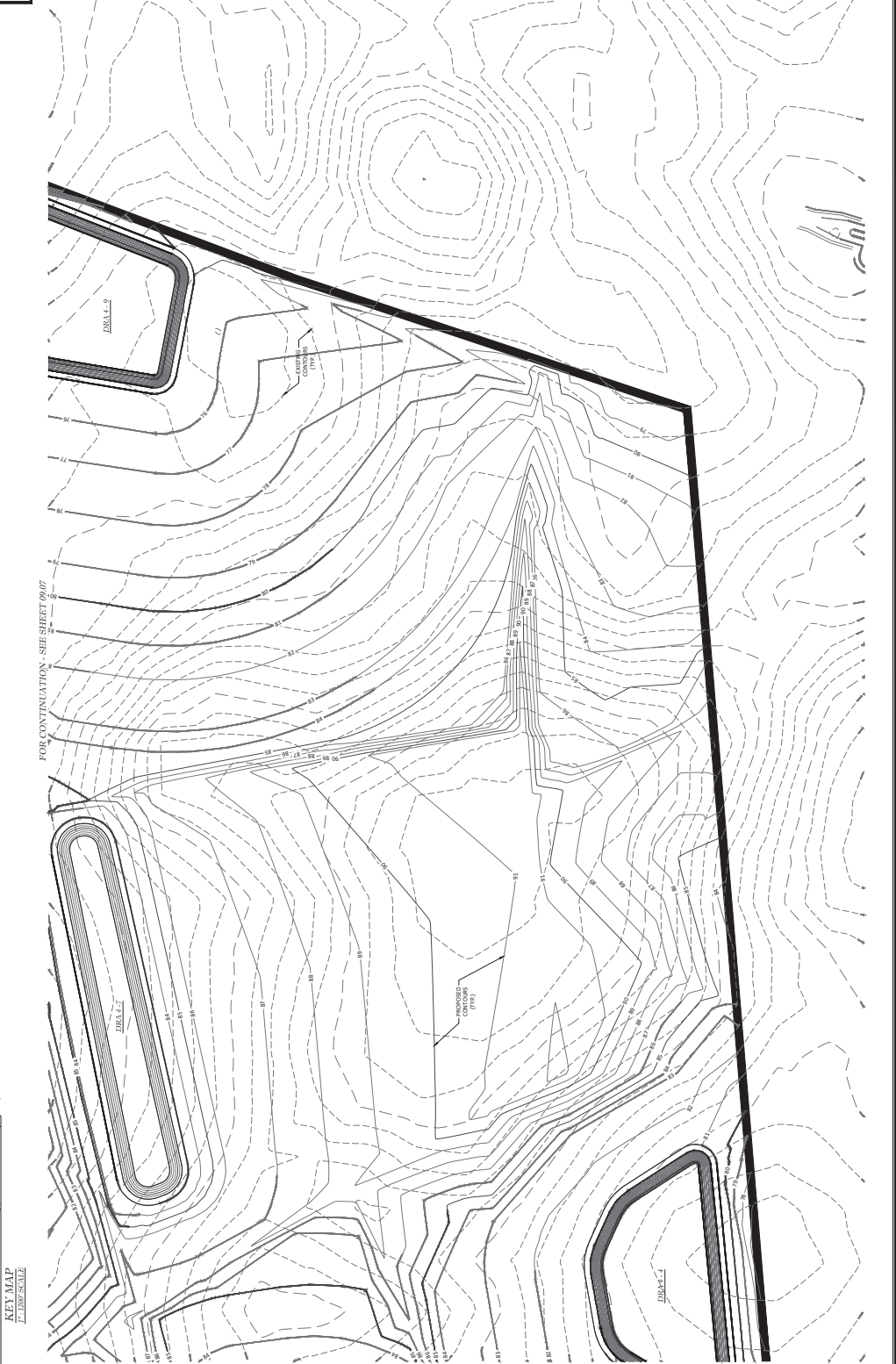
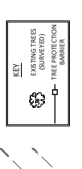
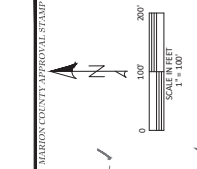
DATE	REVISIONS

TREE PRESERVATION PLAN
 MASS GRADING PHASE 4
 CALUSA TOWNSHIP
 MARION COUNTY, FLORIDA

DATE: 4/17/2009
 DRAWN BY: J. CARL
 JOB NO.: 25-0068

SHEET: 09.08

MARION COUNTY APPROVAL STAMP



FOR CONTINUATION - SEE SHEET 09.07
 FOR CONTINUATION - SEE SHEET 09.09

NOT VALID UNLESS SIGNED AND SEALED BY A PROFESSIONAL ENGINEER

Tillman & Associates
 ENGINEERING, LLC
 CIVIL ENGINEERING - PLANNING - LANDSCAPE ARCHITECTURE - ENVIRONMENTAL
 OFFICE: (352) 387-4510 FAX: (352) 387-4545
 1720 SE 16TH AVE. BLDG 100, OCHA, FL 34471
 CERTIFICATION OF AUTHORIZATION #26756

DATE	REVISIONS

BOUNDARY & BUFFER PLAN
TREE PRESERVATION
 CALLESA TOWNSHIP
 MARION COUNTY, FLORIDA
 MASS GRADING PHASE 4

DATE: 4/17/2020
 DRAWN BY: J. CARL
 CHECKED BY: J. CARL
 JOB NO.: 25-0076

SHEET: 09.10

MARION COUNTY APPROVAL STAMP



MODIFIED TYPE C-1 BUFFER.
 PROPOSED TYPE C-1 BUFFER.
 NOT TO SCALE

MODIFIED TYPE C-1 BUFFER.
 PROPOSED TYPE C-1 BUFFER.
 NOT TO SCALE



NOT VALID UNLESS SIGNED AND SEALED BY A PROFESSIONAL ENGINEER

DATE	REVISIONS



MARION COUNTY APPROVAL SHEET

Log of Borehole P-1
 Project: CALSA PHASE 4, 400 BONDWELL BL, 39711 HWY AVE, CORAL SPRING, FL 34415 (15172300)
 Boring Location: (SEE BORING LOCATION MAP)
 Client: CALSA DEVELOPMENT, LLC
 Engineer: CHM
 Date: 04/17/2022

Depth (ft)	Soil Type	Description	Remarks
0	1	1.00' - 1.50' FINE SAND	1.00' - 1.50' FINE SAND
1.50	2	1.50' - 2.00' FINE SAND	1.50' - 2.00' FINE SAND
2.00	3	2.00' - 2.50' FINE SAND	2.00' - 2.50' FINE SAND
2.50	4	2.50' - 3.00' FINE SAND	2.50' - 3.00' FINE SAND
3.00	5	3.00' - 3.50' FINE SAND	3.00' - 3.50' FINE SAND
3.50	6	3.50' - 4.00' FINE SAND	3.50' - 4.00' FINE SAND
4.00	7	4.00' - 4.50' FINE SAND	4.00' - 4.50' FINE SAND
4.50	8	4.50' - 5.00' FINE SAND	4.50' - 5.00' FINE SAND
5.00	9	5.00' - 5.50' FINE SAND	5.00' - 5.50' FINE SAND
5.50	10	5.50' - 6.00' FINE SAND	5.50' - 6.00' FINE SAND
6.00	11	6.00' - 6.50' FINE SAND	6.00' - 6.50' FINE SAND
6.50	12	6.50' - 7.00' FINE SAND	6.50' - 7.00' FINE SAND
7.00	13	7.00' - 7.50' FINE SAND	7.00' - 7.50' FINE SAND
7.50	14	7.50' - 8.00' FINE SAND	7.50' - 8.00' FINE SAND
8.00	15	8.00' - 8.50' FINE SAND	8.00' - 8.50' FINE SAND
8.50	16	8.50' - 9.00' FINE SAND	8.50' - 9.00' FINE SAND
9.00	17	9.00' - 9.50' FINE SAND	9.00' - 9.50' FINE SAND
9.50	18	9.50' - 10.00' FINE SAND	9.50' - 10.00' FINE SAND
10.00	19	10.00' - 10.50' FINE SAND	10.00' - 10.50' FINE SAND
10.50	20	10.50' - 11.00' FINE SAND	10.50' - 11.00' FINE SAND
11.00	21	11.00' - 11.50' FINE SAND	11.00' - 11.50' FINE SAND
11.50	22	11.50' - 12.00' FINE SAND	11.50' - 12.00' FINE SAND
12.00	23	12.00' - 12.50' FINE SAND	12.00' - 12.50' FINE SAND
12.50	24	12.50' - 13.00' FINE SAND	12.50' - 13.00' FINE SAND
13.00	25	13.00' - 13.50' FINE SAND	13.00' - 13.50' FINE SAND
13.50	26	13.50' - 14.00' FINE SAND	13.50' - 14.00' FINE SAND
14.00	27	14.00' - 14.50' FINE SAND	14.00' - 14.50' FINE SAND
14.50	28	14.50' - 15.00' FINE SAND	14.50' - 15.00' FINE SAND
15.00	29	15.00' - 15.50' FINE SAND	15.00' - 15.50' FINE SAND
15.50	30	15.50' - 16.00' FINE SAND	15.50' - 16.00' FINE SAND
16.00	31	16.00' - 16.50' FINE SAND	16.00' - 16.50' FINE SAND
16.50	32	16.50' - 17.00' FINE SAND	16.50' - 17.00' FINE SAND
17.00	33	17.00' - 17.50' FINE SAND	17.00' - 17.50' FINE SAND
17.50	34	17.50' - 18.00' FINE SAND	17.50' - 18.00' FINE SAND
18.00	35	18.00' - 18.50' FINE SAND	18.00' - 18.50' FINE SAND
18.50	36	18.50' - 19.00' FINE SAND	18.50' - 19.00' FINE SAND
19.00	37	19.00' - 19.50' FINE SAND	19.00' - 19.50' FINE SAND
19.50	38	19.50' - 20.00' FINE SAND	19.50' - 20.00' FINE SAND
20.00	39	20.00' - 20.50' FINE SAND	20.00' - 20.50' FINE SAND
20.50	40	20.50' - 21.00' FINE SAND	20.50' - 21.00' FINE SAND
21.00	41	21.00' - 21.50' FINE SAND	21.00' - 21.50' FINE SAND
21.50	42	21.50' - 22.00' FINE SAND	21.50' - 22.00' FINE SAND
22.00	43	22.00' - 22.50' FINE SAND	22.00' - 22.50' FINE SAND
22.50	44	22.50' - 23.00' FINE SAND	22.50' - 23.00' FINE SAND
23.00	45	23.00' - 23.50' FINE SAND	23.00' - 23.50' FINE SAND
23.50	46	23.50' - 24.00' FINE SAND	23.50' - 24.00' FINE SAND
24.00	47	24.00' - 24.50' FINE SAND	24.00' - 24.50' FINE SAND
24.50	48	24.50' - 25.00' FINE SAND	24.50' - 25.00' FINE SAND
25.00	49	25.00' - 25.50' FINE SAND	25.00' - 25.50' FINE SAND
25.50	50	25.50' - 26.00' FINE SAND	25.50' - 26.00' FINE SAND
26.00	51	26.00' - 26.50' FINE SAND	26.00' - 26.50' FINE SAND
26.50	52	26.50' - 27.00' FINE SAND	26.50' - 27.00' FINE SAND
27.00	53	27.00' - 27.50' FINE SAND	27.00' - 27.50' FINE SAND
27.50	54	27.50' - 28.00' FINE SAND	27.50' - 28.00' FINE SAND
28.00	55	28.00' - 28.50' FINE SAND	28.00' - 28.50' FINE SAND
28.50	56	28.50' - 29.00' FINE SAND	28.50' - 29.00' FINE SAND
29.00	57	29.00' - 29.50' FINE SAND	29.00' - 29.50' FINE SAND
29.50	58	29.50' - 30.00' FINE SAND	29.50' - 30.00' FINE SAND
30.00	59	30.00' - 30.50' FINE SAND	30.00' - 30.50' FINE SAND
30.50	60	30.50' - 31.00' FINE SAND	30.50' - 31.00' FINE SAND
31.00	61	31.00' - 31.50' FINE SAND	31.00' - 31.50' FINE SAND
31.50	62	31.50' - 32.00' FINE SAND	31.50' - 32.00' FINE SAND
32.00	63	32.00' - 32.50' FINE SAND	32.00' - 32.50' FINE SAND
32.50	64	32.50' - 33.00' FINE SAND	32.50' - 33.00' FINE SAND
33.00	65	33.00' - 33.50' FINE SAND	33.00' - 33.50' FINE SAND
33.50	66	33.50' - 34.00' FINE SAND	33.50' - 34.00' FINE SAND
34.00	67	34.00' - 34.50' FINE SAND	34.00' - 34.50' FINE SAND
34.50	68	34.50' - 35.00' FINE SAND	34.50' - 35.00' FINE SAND
35.00	69	35.00' - 35.50' FINE SAND	35.00' - 35.50' FINE SAND
35.50	70	35.50' - 36.00' FINE SAND	35.50' - 36.00' FINE SAND
36.00	71	36.00' - 36.50' FINE SAND	36.00' - 36.50' FINE SAND
36.50	72	36.50' - 37.00' FINE SAND	36.50' - 37.00' FINE SAND
37.00	73	37.00' - 37.50' FINE SAND	37.00' - 37.50' FINE SAND
37.50	74	37.50' - 38.00' FINE SAND	37.50' - 38.00' FINE SAND
38.00	75	38.00' - 38.50' FINE SAND	38.00' - 38.50' FINE SAND
38.50	76	38.50' - 39.00' FINE SAND	38.50' - 39.00' FINE SAND
39.00	77	39.00' - 39.50' FINE SAND	39.00' - 39.50' FINE SAND
39.50	78	39.50' - 40.00' FINE SAND	39.50' - 40.00' FINE SAND
40.00	79	40.00' - 40.50' FINE SAND	40.00' - 40.50' FINE SAND
40.50	80	40.50' - 41.00' FINE SAND	40.50' - 41.00' FINE SAND
41.00	81	41.00' - 41.50' FINE SAND	41.00' - 41.50' FINE SAND
41.50	82	41.50' - 42.00' FINE SAND	41.50' - 42.00' FINE SAND
42.00	83	42.00' - 42.50' FINE SAND	42.00' - 42.50' FINE SAND
42.50	84	42.50' - 43.00' FINE SAND	42.50' - 43.00' FINE SAND
43.00	85	43.00' - 43.50' FINE SAND	43.00' - 43.50' FINE SAND
43.50	86	43.50' - 44.00' FINE SAND	43.50' - 44.00' FINE SAND
44.00	87	44.00' - 44.50' FINE SAND	44.00' - 44.50' FINE SAND
44.50	88	44.50' - 45.00' FINE SAND	44.50' - 45.00' FINE SAND
45.00	89	45.00' - 45.50' FINE SAND	45.00' - 45.50' FINE SAND
45.50	90	45.50' - 46.00' FINE SAND	45.50' - 46.00' FINE SAND
46.00	91	46.00' - 46.50' FINE SAND	46.00' - 46.50' FINE SAND
46.50	92	46.50' - 47.00' FINE SAND	46.50' - 47.00' FINE SAND
47.00	93	47.00' - 47.50' FINE SAND	47.00' - 47.50' FINE SAND
47.50	94	47.50' - 48.00' FINE SAND	47.50' - 48.00' FINE SAND
48.00	95	48.00' - 48.50' FINE SAND	48.00' - 48.50' FINE SAND
48.50	96	48.50' - 49.00' FINE SAND	48.50' - 49.00' FINE SAND
49.00	97	49.00' - 49.50' FINE SAND	49.00' - 49.50' FINE SAND
49.50	98	49.50' - 50.00' FINE SAND	49.50' - 50.00' FINE SAND
50.00	99	50.00' - 50.50' FINE SAND	50.00' - 50.50' FINE SAND
50.50	100	50.50' - 51.00' FINE SAND	50.50' - 51.00' FINE SAND
51.00	101	51.00' - 51.50' FINE SAND	51.00' - 51.50' FINE SAND
51.50	102	51.50' - 52.00' FINE SAND	51.50' - 52.00' FINE SAND
52.00	103	52.00' - 52.50' FINE SAND	52.00' - 52.50' FINE SAND
52.50	104	52.50' - 53.00' FINE SAND	52.50' - 53.00' FINE SAND
53.00	105	53.00' - 53.50' FINE SAND	53.00' - 53.50' FINE SAND
53.50	106	53.50' - 54.00' FINE SAND	53.50' - 54.00' FINE SAND
54.00	107	54.00' - 54.50' FINE SAND	54.00' - 54.50' FINE SAND
54.50	108	54.50' - 55.00' FINE SAND	54.50' - 55.00' FINE SAND
55.00	109	55.00' - 55.50' FINE SAND	55.00' - 55.50' FINE SAND
55.50	110	55.50' - 56.00' FINE SAND	55.50' - 56.00' FINE SAND
56.00	111	56.00' - 56.50' FINE SAND	56.00' - 56.50' FINE SAND
56.50	112	56.50' - 57.00' FINE SAND	56.50' - 57.00' FINE SAND
57.00	113	57.00' - 57.50' FINE SAND	57.00' - 57.50' FINE SAND
57.50	114	57.50' - 58.00' FINE SAND	57.50' - 58.00' FINE SAND
58.00	115	58.00' - 58.50' FINE SAND	58.00' - 58.50' FINE SAND
58.50	116	58.50' - 59.00' FINE SAND	58.50' - 59.00' FINE SAND
59.00	117	59.00' - 59.50' FINE SAND	59.00' - 59.50' FINE SAND
59.50	118	59.50' - 60.00' FINE SAND	59.50' - 60.00' FINE SAND
60.00	119	60.00' - 60.50' FINE SAND	60.00' - 60.50' FINE SAND
60.50	120	60.50' - 61.00' FINE SAND	60.50' - 61.00' FINE SAND
61.00	121	61.00' - 61.50' FINE SAND	61.00' - 61.50' FINE SAND
61.50	122	61.50' - 62.00' FINE SAND	61.50' - 62.00' FINE SAND
62.00	123	62.00' - 62.50' FINE SAND	62.00' - 62.50' FINE SAND
62.50	124	62.50' - 63.00' FINE SAND	62.50' - 63.00' FINE SAND
63.00	125	63.00' - 63.50' FINE SAND	63.00' - 63.50' FINE SAND
63.50	126	63.50' - 64.00' FINE SAND	63.50' - 64.00' FINE SAND
64.00	127	64.00' - 64.50' FINE SAND	64.00' - 64.50' FINE SAND
64.50	128	64.50' - 65.00' FINE SAND	64.50' - 65.00' FINE SAND
65.00	129	65.00' - 65.50' FINE SAND	65.00' - 65.50' FINE SAND
65.50	130	65.50' - 66.00' FINE SAND	65.50' - 66.00' FINE SAND
66.00	131	66.00' - 66.50' FINE SAND	66.00' - 66.50' FINE SAND
66.50	132	66.50' - 67.00' FINE SAND	66.50' - 67.00' FINE SAND
67.00	133	67.00' - 67.50' FINE SAND	67.00' - 67.50' FINE SAND
67.50	134	67.50' - 68.00' FINE SAND	67.50' - 68.00' FINE SAND
68.00	135	68.00' - 68.50' FINE SAND	68.00' - 68.50' FINE SAND
68.50	136	68.50' - 69.00' FINE SAND	68.50' - 69.00' FINE SAND
69.00	137	69.00' - 69.50' FINE SAND	69.00' - 69.50' FINE SAND
69.50	138	69.50' - 70.00' FINE SAND	69.50' - 70.00' FINE SAND
70.00	139	70.00' - 70.50' FINE SAND	70.00' - 70.50' FINE SAND
70.50	140	70.50' - 71.00' FINE SAND	70.50' - 71.00' FINE SAND
71.00	141	71.00' - 71.50' FINE SAND	71.00' - 71.50' FINE SAND
71.50	142	71.50' - 72.00' FINE SAND	71.50' - 72.00' FINE SAND
72.00	143	72.00' - 72.50' FINE SAND	72.00' - 72.50' FINE SAND
72.50	144	72.50' - 73.00' FINE SAND	72.50' - 73.00' FINE SAND
73.00	145	73.00' - 73.50' FINE SAND	73.00' - 73.50' FINE SAND
73.50	146	73.50' - 74.00' FINE SAND	73.50' - 74.00' FINE SAND
74.00	147	74.00' - 74.50' FINE SAND	74.00' - 74.50' FINE SAND
74.50	148	74.50' - 75.00' FINE SAND	74.50' - 75.00' FINE SAND
75.00	149	75.00' - 75.50' FINE SAND	75.00' - 75.50' FINE SAND
75.50	150	75.50' - 76.00' FINE SAND	75.50' - 76.00' FINE SAND
76.00	151	76.00' - 76.50' FINE SAND	76.00' - 76.50' FINE SAND
76.50	152	76.50' - 77.00' FINE SAND	76.50' - 77.00' FINE SAND
77.00	153	77.00' - 77.50' FINE SAND	77.00' - 77.50' FINE SAND
77.50	154	77.50' - 78.00' FINE SAND	77.50' - 78.00' FINE SAND
78.00	155	78.00' - 78.50' FINE SAND	78.00' - 78.50' FINE SAND
78.50	156	78.50' - 79.00' FINE SAND	78.50' - 79.00' FINE SAND
79.00	157	79.00' - 79.50' FINE SAND	79.00' - 79.50' FINE SAND
79.50	158	79.50' - 80.00' FINE SAND	79.50' - 80.00' FINE SAND
80.00	159	80.00' - 80.50' FINE SAND	80.00' - 80.50' FINE SAND
80.50	160	80.50' - 81.00' FINE SAND	80.50' - 81.00' FINE SAND
81.00	161	81.00' - 81.50' FINE SAND	81.00' - 81.50' FINE SAND
81.50	162		

