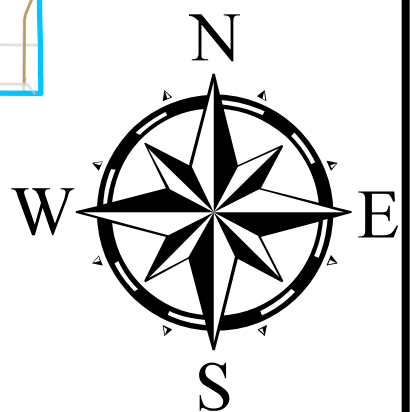
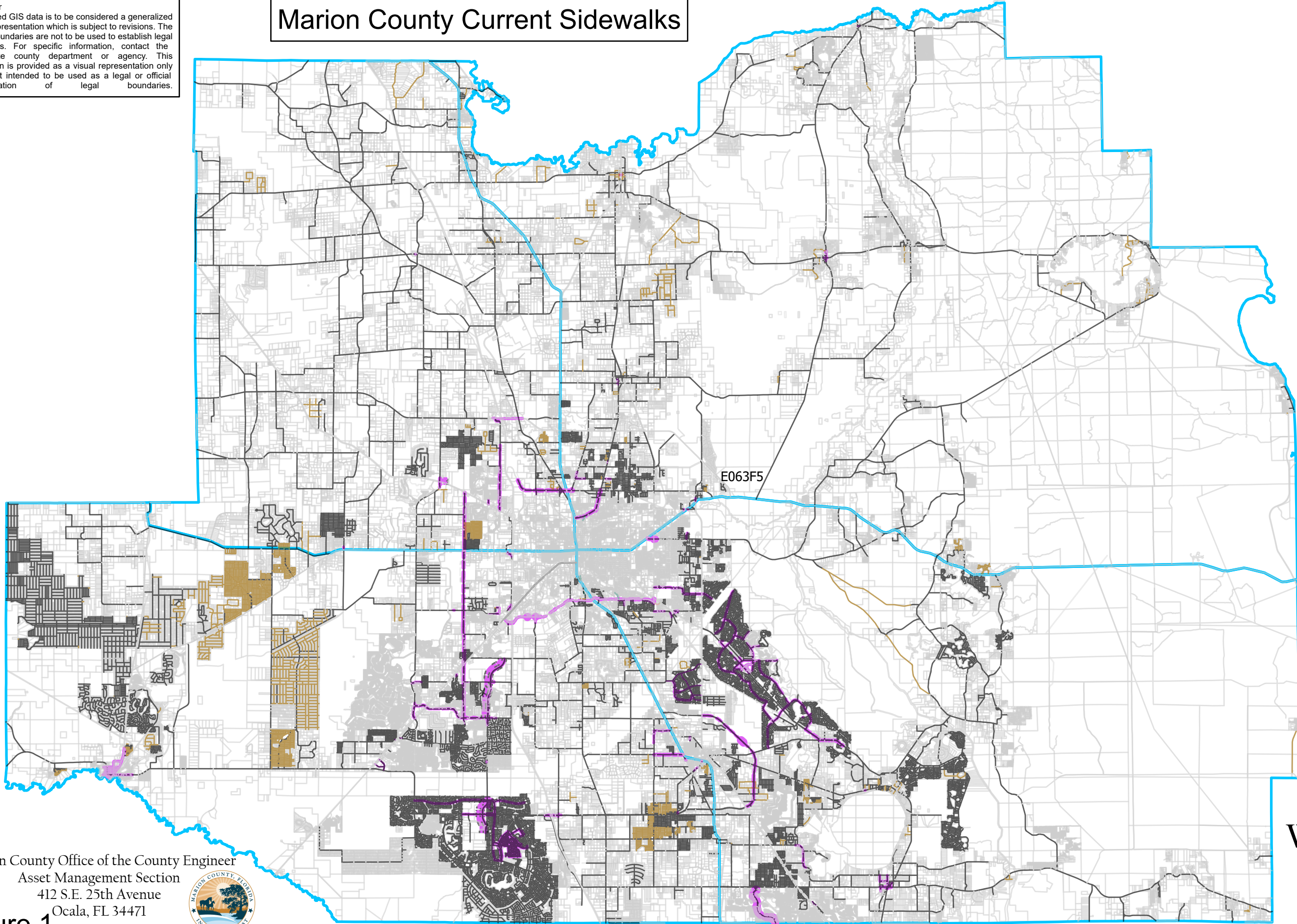


Disclaimer
 All provided GIS data is to be considered a generalized spatial representation which is subject to revisions. The feature boundaries are not to be used to establish legal boundaries. For specific information, contact the appropriate county department or agency. This information is provided as a visual representation only and is not intended to be used as a legal or official representation of legal boundaries.

Marion County Current Sidewalks

- County Road Maintenance**
- OCE Maintained Paved
 - OCE Maintained Unpaved
 - Not Maintained
- OMS_Sidewalks_editable**
- Jurisdiction,Width,Material**
- City,5,Concrete
 - County,<Null>,Asphalt
 - County,<Null>,Concrete
 - County,4,Concrete
 - County,5,Concrete
 - County,6,Concrete
 - County,7,Concrete
 - County,10,Asphalt
 - County,12,<Null>
 - County,12,Asphalt
 - County,12,Concrete
 - Florida DOT,<Null>
 - Florida DOT,5,Concrete
 - Florida DOT,6,Concrete
 - <all other values>
 - Parcels
 - Quadrants



Marion County Office of the County Engineer
 Asset Management Section
 412 S.E. 25th Avenue
 Ocala, FL 34471



Figure 1

Path: \\\mcbcc1\dfs\GIS_TR\Clay.Gibson\Working_maps\ArcPro\Sidewalk_project.aprx

MARION COUNTY ANNUAL SIDEWALK REPAIR



Technician: CG
 Printed: 06/04/2025