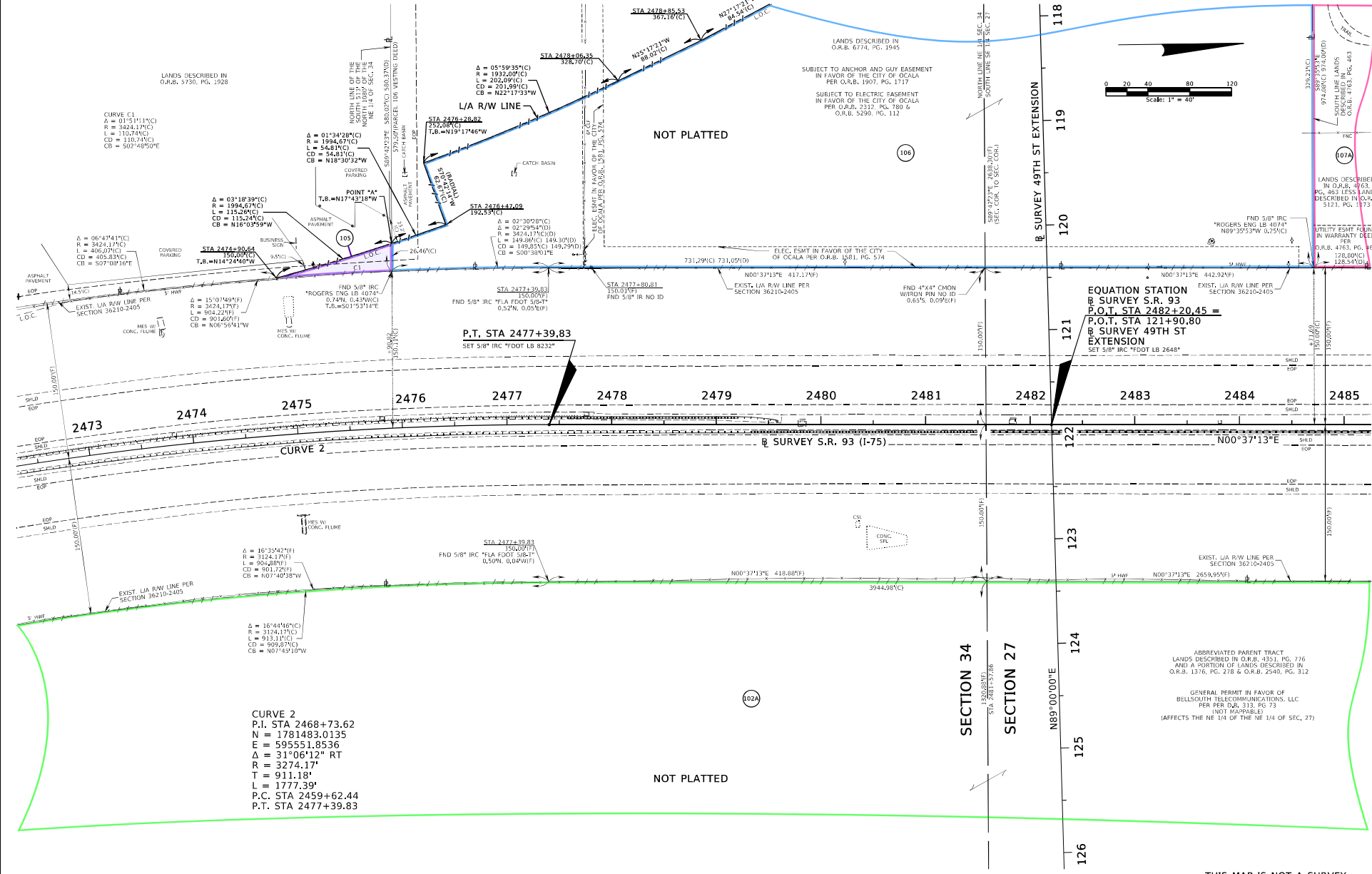


SEE SHEET 13

SEE SHEET 12



LANDS DESCRIBED IN O.R.B. 5730, PG. 1928

CURVE 1
 A = 01°51'11"(C)
 R = 3424.17"(C)
 L = 1102.00"(C)
 CD = 110.74"(C)
 CB = S02°46'50"E

A = 01°24'26"(C)
 R = 1994.67"(C)
 L = 54.81"(C)
 CD = 54.81"(C)
 CB = N18°30'32"W

A = 03°18'33"(C)
 R = 1994.67"(C)
 L = 115.24"(C)
 CD = 115.24"(C)
 CB = N18°02'59"W

A = 06°47'41"(C)
 R = 3424.17"(C)
 L = 406.00"(C)
 CD = 405.83"(C)
 CB = S07°09'16"E

STA 2474+90.64
 T.B. = N14°24'00"W
 150.00"(C)

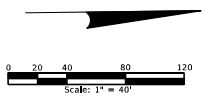
A = 15°10'49"(F)
 R = 3424.17"(F)
 L = 904.22"(F)
 CD = 901.60"(F)
 CB = N86°55'41"W

P.T. STA 2477+39.83
 SET 5/8" IRC "FDDT LB 8232"

CURVE 2
 P.I. STA 2468+73.62
 N = 1781483.0135
 E = 595551.8536
 Δ = 31°06'12" RT
 R = 3274.17'
 T = 911.18'
 L = 1777.39'
 P.C. STA 2459+62.44
 P.T. STA 2477+39.83

TOWNSHIP 14 SOUTH, RANGE 21 EAST

SEE SHEET 3 & 15



RIGHT OF WAY MAP

FLORIDA DEPARTMENT OF TRANSPORTATION
SURVEYING AND MAPPING

APPROVED BY: [Signature]
 DATE: 07/22/2024
 FOR: DISTRICT SECRETARY

REVISION	BY	DATE	REVISION	BY	DATE

PRELIM. N. VOOR 10/12/2022
 FINAL B.PAULK 07/02/2024
 CHECKED B.PAULK 06/24/2024

FED. PROJ. D523-045-B
 STATE ROAD NO. 93

SECTION 36210
 MARION COUNTY
 F.P. NO. 43520-1
 SHEET 8 OF 21

THIS MAP IS NOT A SURVEY
 SEE SHEET 1 FOR GENERAL NOTES AND LEGEND
 STATE ROAD 93 (I-75) AT NW 49TH STREET

07/22/2024