



PUD/RESIDENTIAL APPLICATION IMPACTS TO FIRE RESCUE SERVICES

AZALEAS SKILLED NURSING FACILITY/CORNER OF STATE ROAD 200 AND SW 93RD ST RD /
PARCEL # 35695-019-03



Azaleas Skilled Nursing Facility – Corner of State Road 200 and SW 93rd St Rd.



- The request is to modify a 9.47-acre parcel, adding a skilled nursing and memory care facility with 141 beds. The concept plan as provided, will be a total 103,526 sqft. It will have 50 private skilled nursing beds, 33 semiprivate rooms with 66 beds, and 1 bariatric room with 1 bed. That will be 117 beds in the SNF. The memory care unit will have 2 private rooms and 11 semiprivate rooms for a total of 24 beds.



Common Definitions Used By Fire Rescue

- ISO- The ISO (Insurance Services Office) rating is a crucial assessment for fire departments in the United States, directly influencing both the department's operations and the community it serves.
 - The ISO's Public Protection Classification (PPC) program evaluates a fire department's ability to protect its community from fire-related incidents, and assigns a rating that can affect property insurance rates for homes and businesses within the department's jurisdiction.
 - MCFR has a ISO rating of 2/2Y
- NFPA-The National Fire Protection Association (NFPA) is a global nonprofit organization devoted to eliminating death, injury, property, and economic loss due to fire, electrical, and related hazards.
 - Founded in 1896, the NFPA develops and publishes more than 300 codes and standards that are designed to minimize the risk and effects of fire and other hazards.

Common Definitions Used By Fire Rescue

- Resource Reliability- refers to the number of incidents occurring simultaneously within the service area.
 - As the number of simultaneous incidents increases, the ability to respond to additional calls for service decreases.
 - Displayed in percentage of occurrence.

| Level of concern for reliability | Percentage |
|----------------------------------|----------------|
| Low | 0-10% |
| Moderate | 11-20% |
| High | 21-30% or More |



Common Definitions Used By Fire Rescue

- Workload- Workload is the first factor for consideration. The measure of how much work an individual unit incurs could be as simple as a sum of incidents within a given period of time, such as a year.
 - However, incident duration can vary significantly from minutes to hours and thus this method does not provide the best measure of workload.
 - A more accurate method—while still not a perfect measure—is to consider the amount of time to which a unit is assigned and compare that to the amount of time the unit is in service, a measure referred to as unit hour utilization.
 - The imperfection of this measure is that it does not capture other on-duty activities such as training, station maintenance, apparatus maintenance, hydrant testing, hose testing, pre-incident planning, public education events, etc.

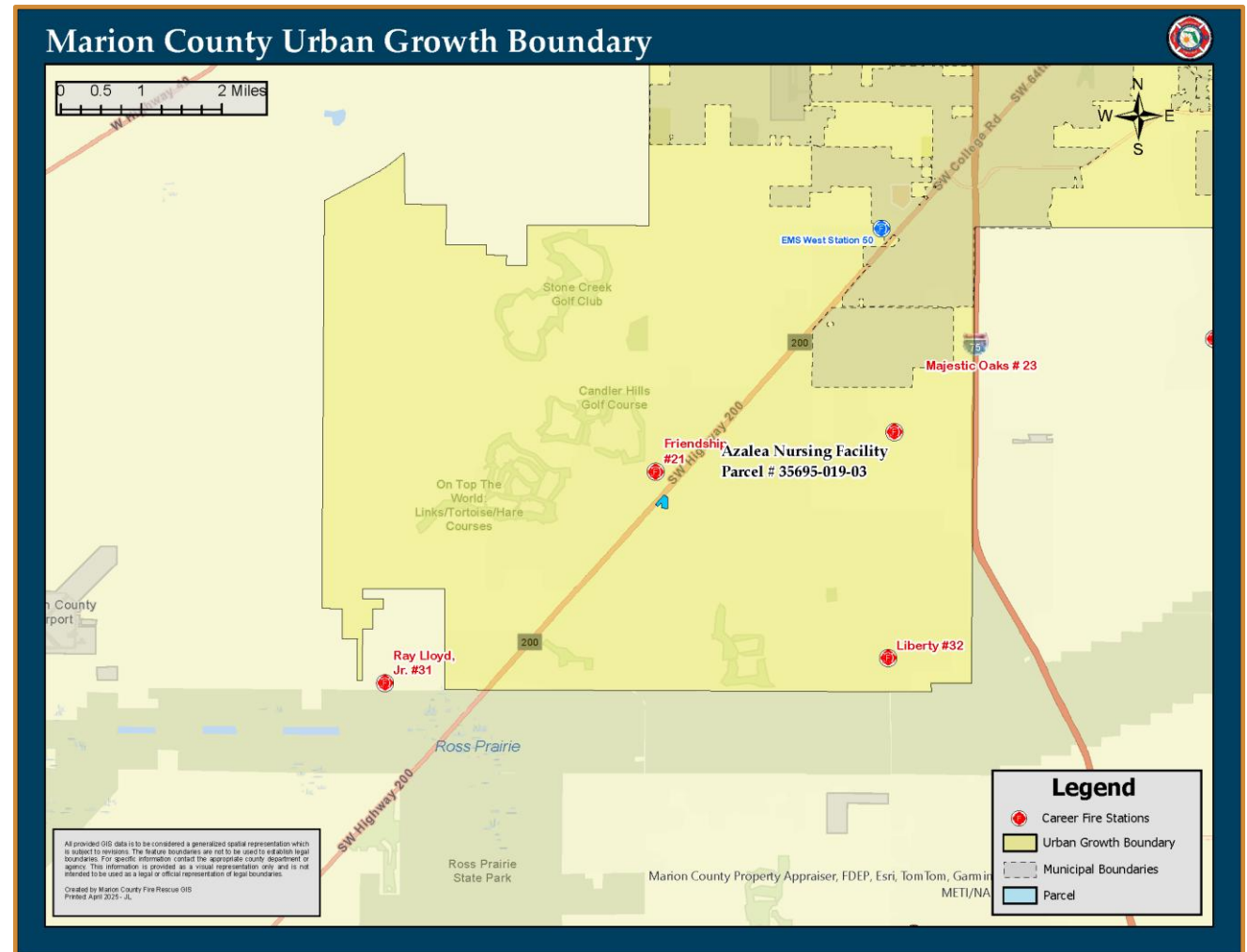


Common Standards Governing Fire Rescue

- NFPA 1061: Standard for Public Safety Telecommunications Personnel Professional Standards Qualifications
- NFPA 1201: Standard for Providing Fire and Emergency Services to the Public
- NFPA 1225, Standard for Emergency Services Communications
- NFPA 1660: Standard for Emergency, Continuity, and Crisis Management: Preparedness, Response, and Recovery
- NFPA 1620: Standard for Pre-Incident Planning
- NFPA 1710, Standard for the Organization and Deployment of Fire Suppression Operations, Emergency Medical Operations, and Special Operations to the Public by Career Fire Departments.
- NFPA 1720, Standard for the Organization and Deployment of Fire Suppression Operations, Emergency Medical Operations, and Special Operations to the Public by Volunteer Fire Departments.

URBAN GROWTH BOUNDARY

THE PARCEL IS INSIDE THE URBAN GROWTH BOUNDARY. THESE PARCELS ARE IN COMMISSION DISTRICT 2.



CLOSEST FIRE STATION LOCATIONS

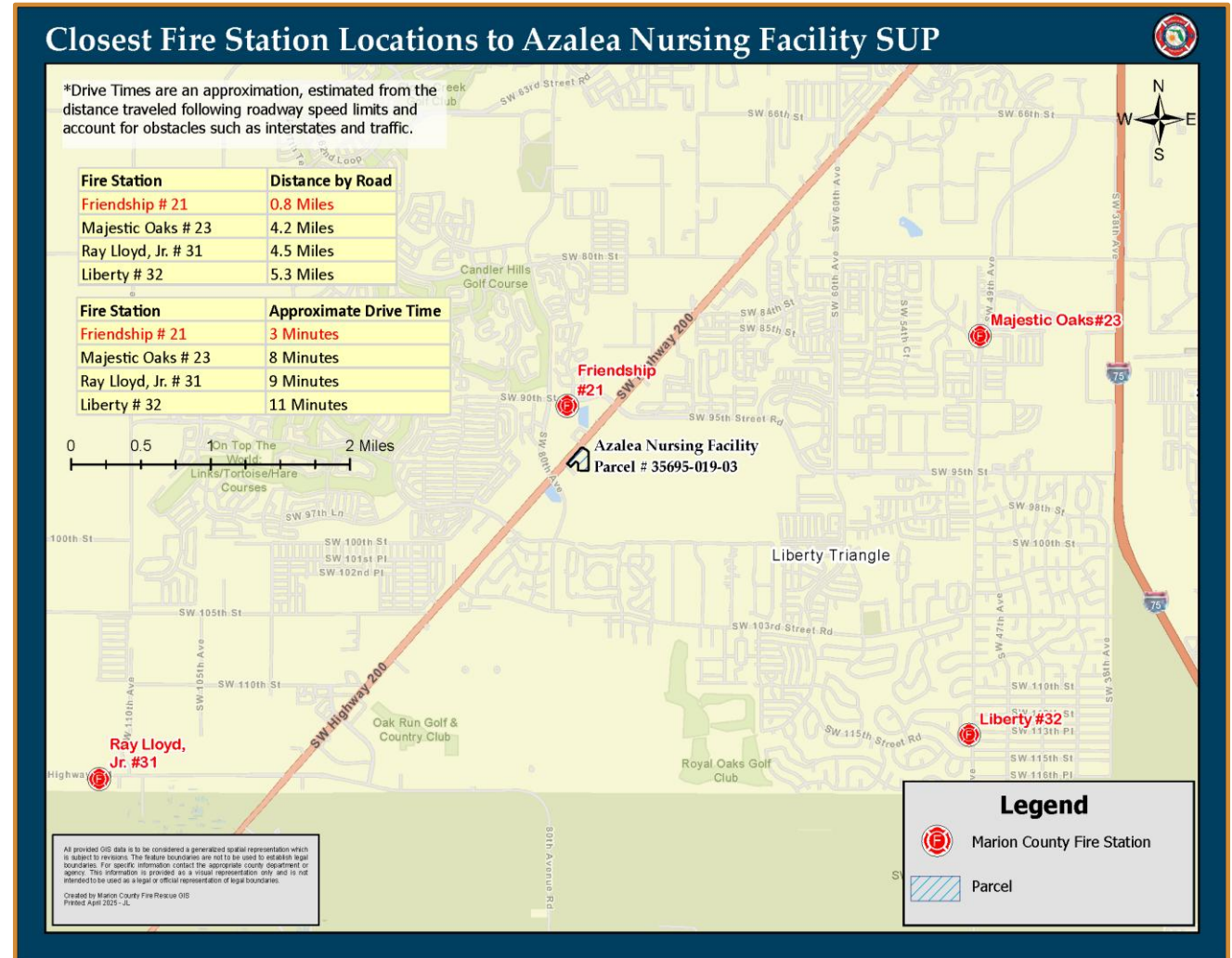
THE FOLLOWING FIRE STATIONS ARE LOCATED NEAR THE PARCEL FOR CONSIDERATION:

FIRE STATION 21, 0.8 ROAD MILES

FIRE STATION 23, 4.3 ROAD MILES

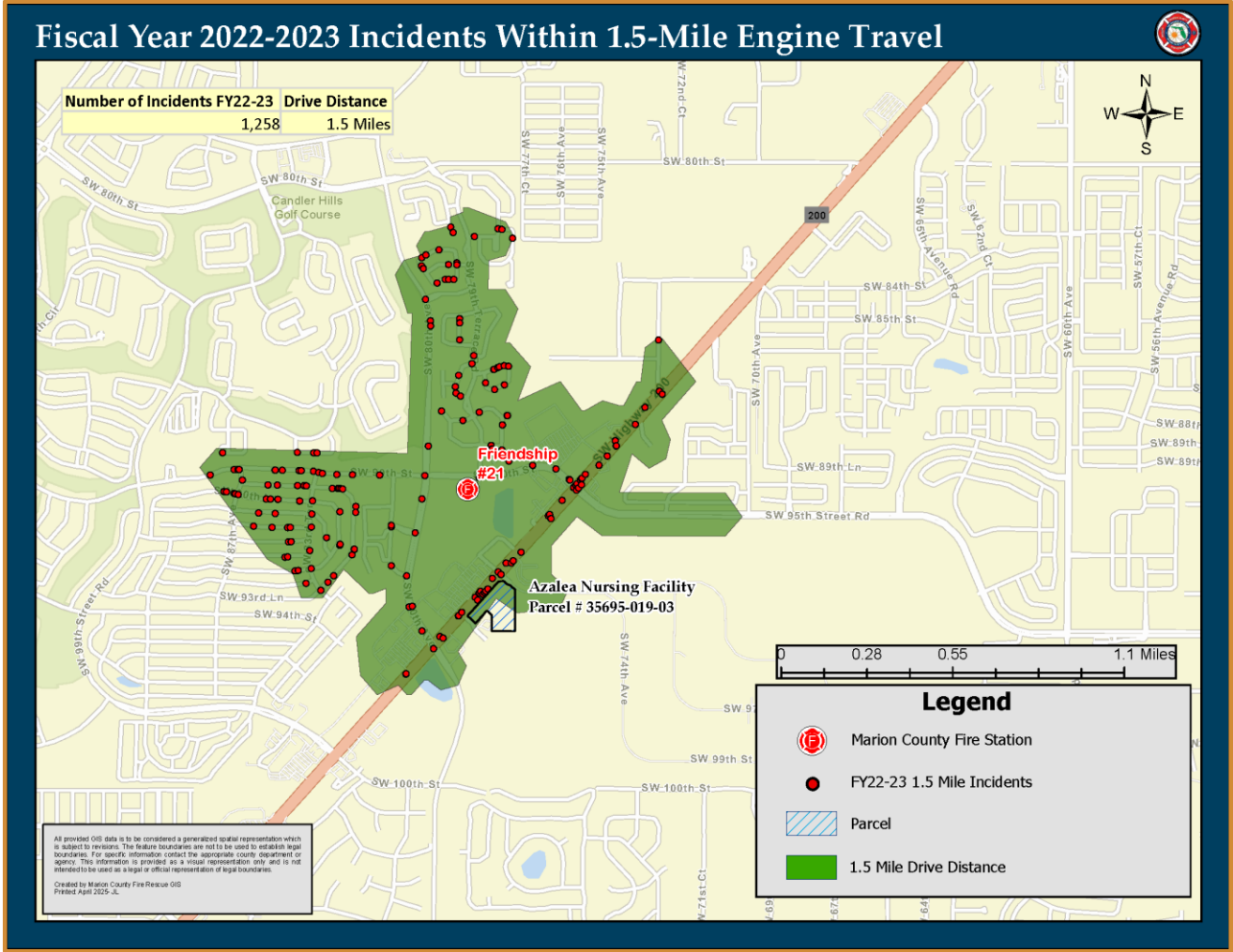
FIRE STATION 31, 4.5 ROAD MILES

FIRE STATION 12, 5.3 ROAD MILES



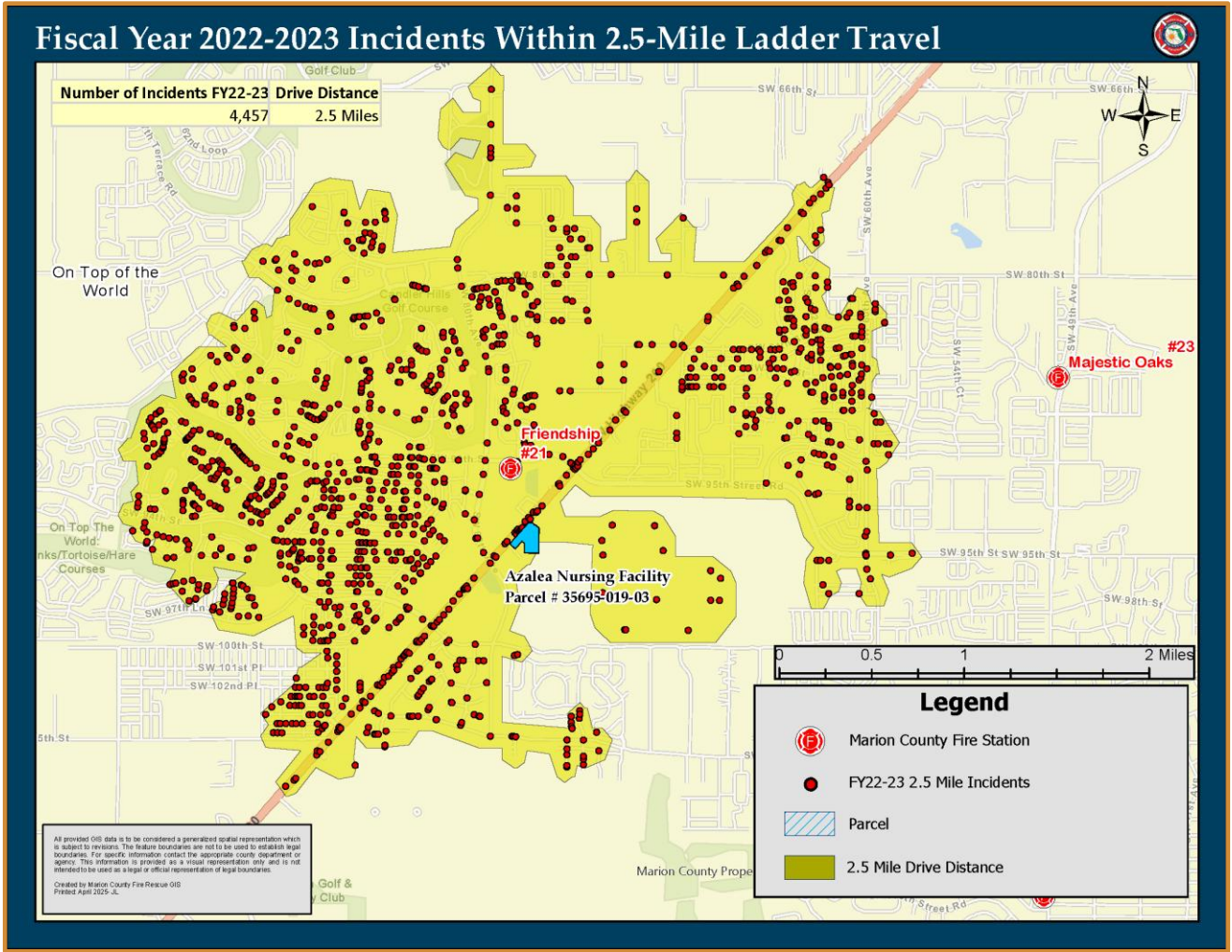
THERE WERE 1,258 CALLS FOR SERVICE WITHIN THE 1.5 MILE ENGINE TRAVEL FOR FIRE STATION 21.

THERE WERE 1,258 CALLS FOR SERVICE WITHIN THE 1.5 MILE ENGINE TRAVEL FOR FIRE STATION 21.



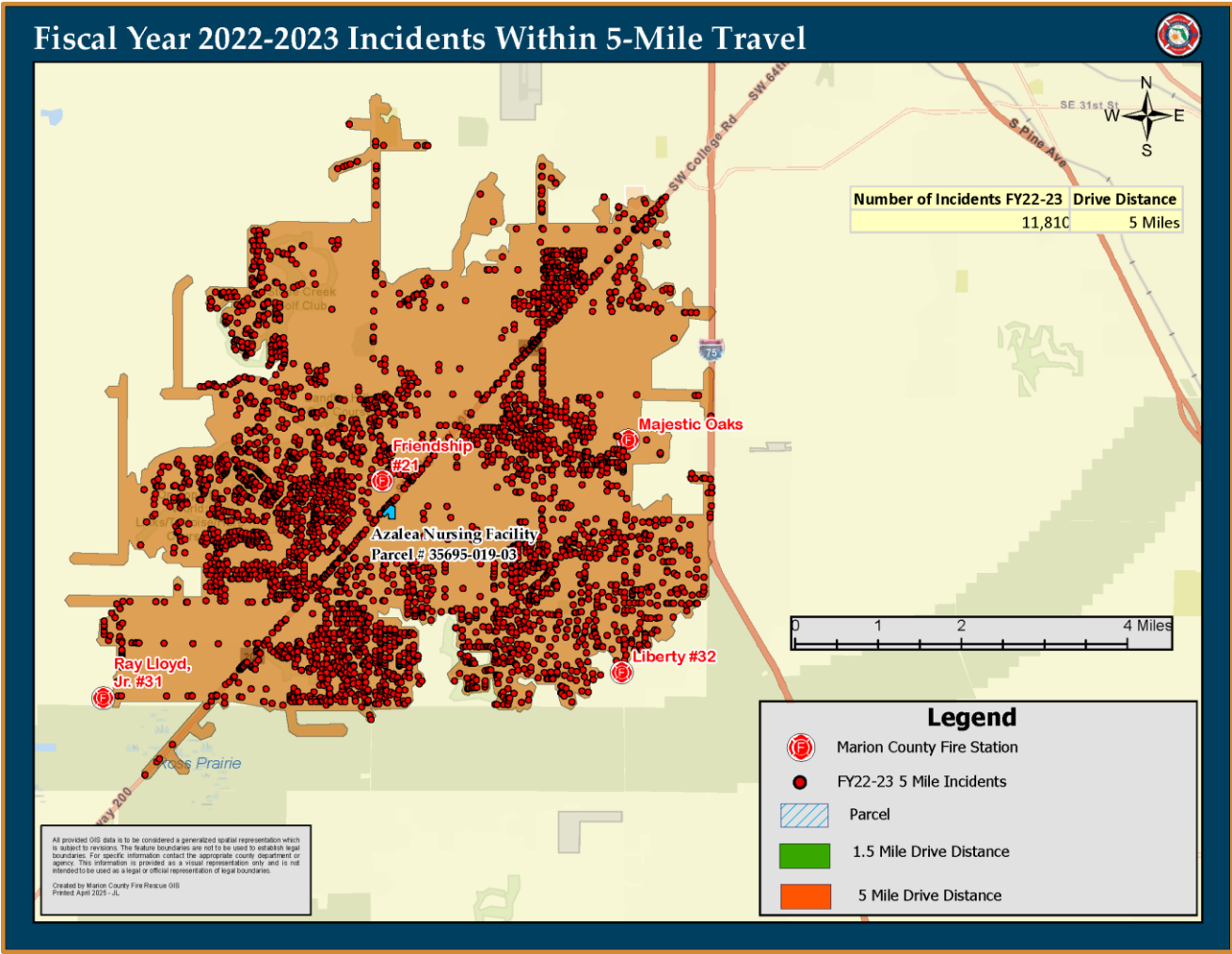
FY 22/23 INCIDENTS WITHIN 2.5-MILE LADDER TRAVEL

THERE WERE 4,457 CALLS FOR SERVICE WITHIN THE 2.5 MILE LADDER TRAVEL FOR FIRE STATION 21.



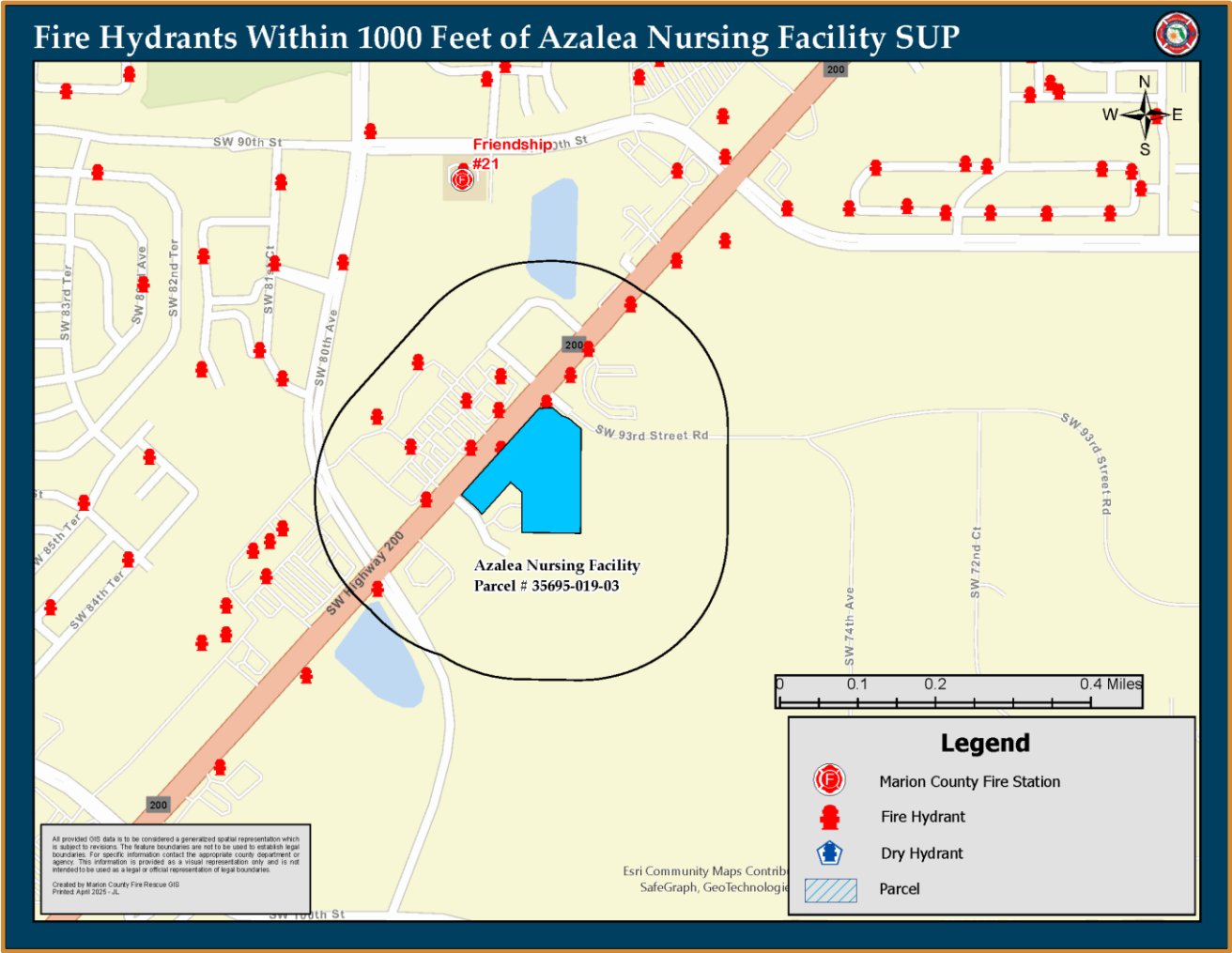
THERE WERE 11,810 CALLS FOR SERVICE WITHIN THE 5 MILE TRAVEL FOR FIRE STATION 21.

THERE WERE 11,810 CALLS FOR SERVICE WITHIN THE 5 MILE TRAVEL FOR FIRE STATION 21.



THIS PARCEL IS WITHIN 1,000 FEET OF
13 FIRE HYDRANTS AND 0 DRY
HYDRANT.

THIS PARCEL IS WITHIN 1,000 FEET OF
13 FIRE HYDRANTS AND 0 DRY
HYDRANT.





Closest Fire Suppression Response

- Station 21 (Friendship)
 - 3-minute travel time
 - Low incident reliability concern per non-transport unit at 7.03% in FY22/23
 - 2,319 incidents/unit (Above Trigger Point)
- Station 23 (Majestic Oaks)
 - 8-minute travel time
 - Low incident reliability concern per non-transport unit at 7.3% in FY22/23
 - 1,331 incidents/unit
- Station 31 (Ray Lloyd, Jr.)
 - 9-minute travel time
 - Low incident reliability concern per non-transport unit at 0.6% in FY22/23
 - 1,293 incidents/unit
- Station 32 (Liberty)
 - 11-minute travel time
 - Low incident reliability concern per non-transport unit at 6.46% in FY22/23
 - 1,555 incidents/unit

Note: non-transport units with greater than 2,000 incidents is measure to consider adding additional resources.



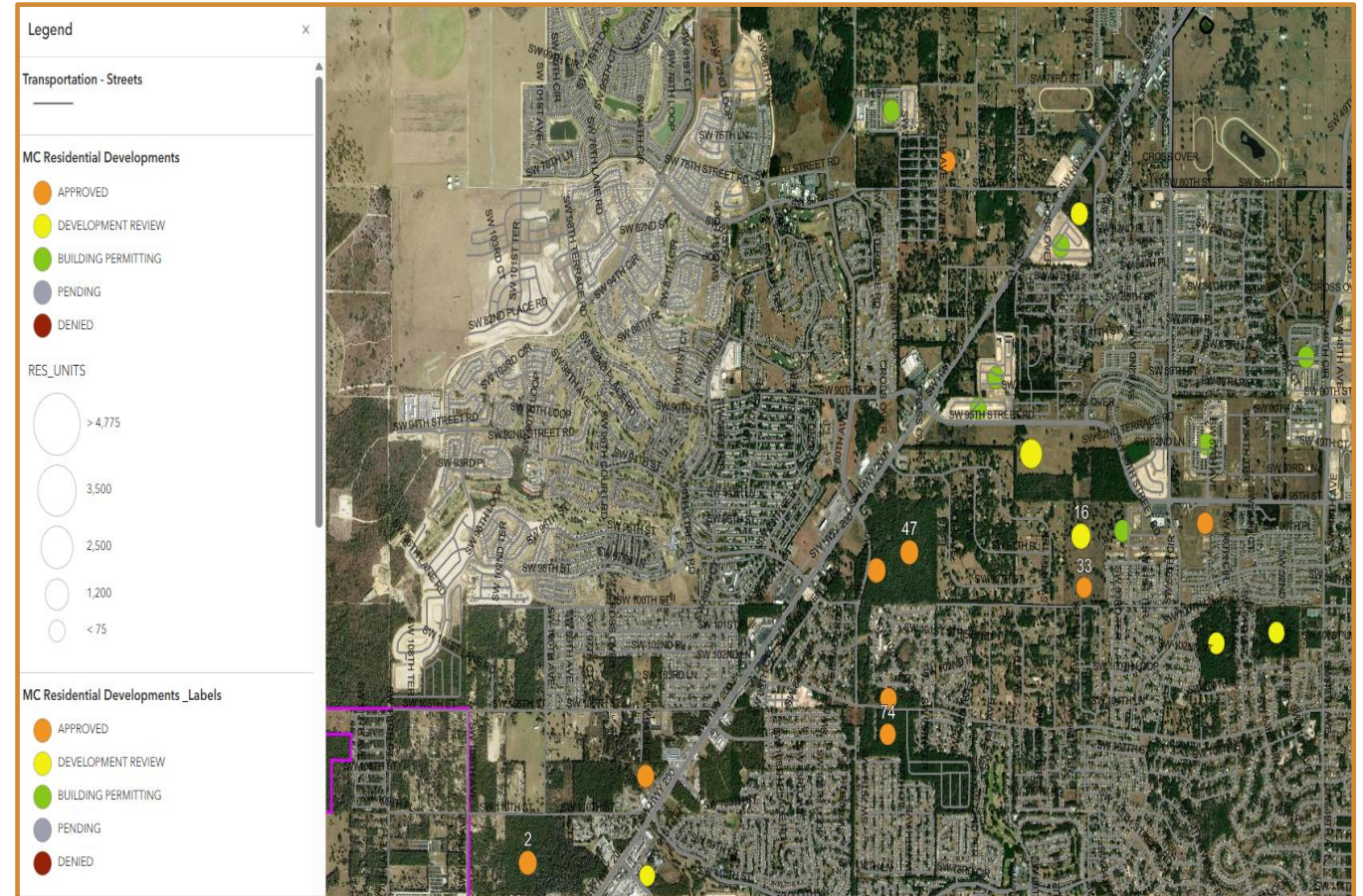
Closest Ambulance Response

- Station 21 (Friendship)
 - 3-minute travel time
 - High incident reliability concern per non-transport unit at 30.43% in FY22/23
 - 3,963 incidents/unit (Above Trigger Point)
- Station 31 (Ray Lloyd, Jr.)
 - 9-minute travel time
 - High incident reliability concern per non-transport unit at 23.47% in FY22/23
 - 2,926 incidents/unit (Above Trigger Point)
- Station 32 (Liberty)
 - 11-minute travel time
 - Moderate incident reliability concern per non-transport unit at 15.64% in FY23/24
 - 1,726 incidents/unit

Note: transport units with greater than 2,500 incidents is measure to consider adding additional resources.

OTHER RESIDENTIAL DEVELOPMENTS

THERE WERE 22 OTHER
DEVELOPMENTS CONSIDERING FIRE
RESCUE SERVICE LEVELS IN
ADDITION TO THIS REQUEST.



Current Status of Fire Rescue Service in the Area.



- There are no additional budgeted units for this area to date.



Recommendations from Fire Rescue

- If approved, additional resources are warranted to handle increased demand from the proposed parcel.
 - The transport units from two of the four closest fire stations are above the adopted capacity limits currently and additional growth will exacerbate these numbers.
 - Additional Transport Unit is warranted.



QUESTIONS?