

# Tentative Education Facilities Plan

## PROJECT UPDATE

*March 2025 PSPO Meeting*

*The Technical  
Working Group*

*in partnership with*



## AGENDA

***Project  
Status***

**01**

***Looking  
Forward***

**02**

***Confirmation  
& Discussion***

**03**

# Project Status



## Project Status

## PURPOSE



## SCHOOL COLLABORATION WITH LOCAL GOVERNMENTS

## DATA-BASED SCHOOL CAPACITY & GROWTH





## Project Status

## GOALS

5

### SCHOOL LOCATION & SITE PLANNING

### ANNUAL SCHOOL PRIORITIES



## Project Status

## PARTICIPANTS

6

### JURISDICTIONS



### COMMITTEES

Public School Planning Officials

Technical Working Group

Technical Working Group  
Subcommittee

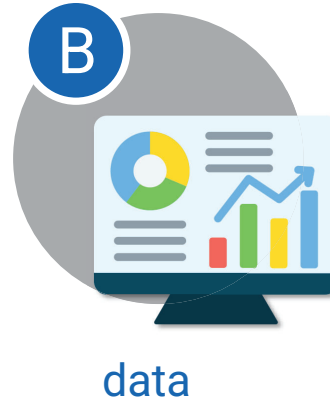
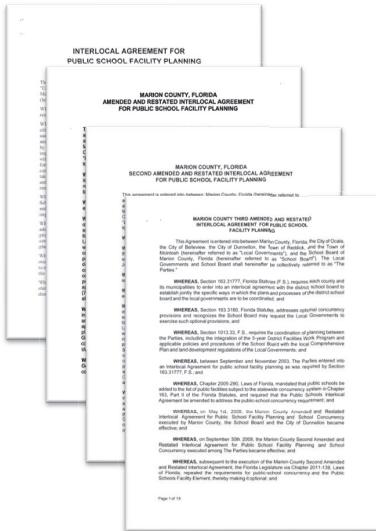
Public School Advisory Council



## Project Status

## TOOLS

7



## Project Status

## MEETINGS

8

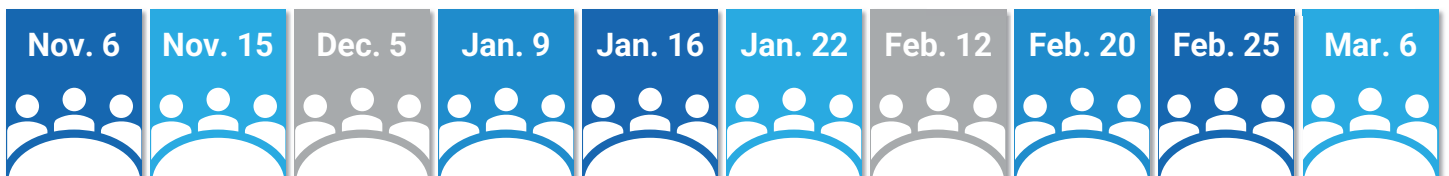
### TWG COMMITTEE



### PSPO



### TWG SUBCOMMITTEE







## Project Status

ITEMS TO RESOLVE

9

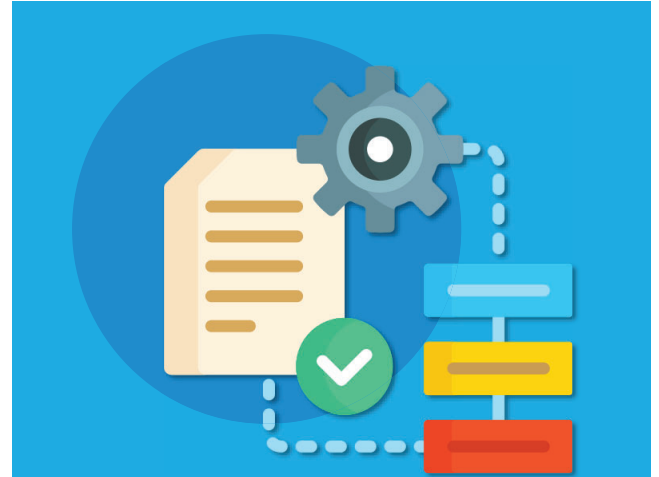
DATA



Standardization of  
Development Data

Impacts to  
School System

ILA



Annual  
Schedule

Process  
Clarification

SECTION 02

## Looking Forward

10



# Looking Forward

DATA



## Looking Forward (Data)

## WORK PLAN

DATA



Standardization of  
Development Data

Impacts to  
School System



1. Request Development & School Data  
(Oct. - Dec.)



2. Consolidate Development Data  
(Jan. - May)



3. Data Refinement  
(Jan. - May)



4. Verify & Normalize Jurisdiction Data  
(Feb. - May)



5. Establish County-wide Baseline Data  
(Apr. - June)



6. Identify Absorption Rate  
(July)



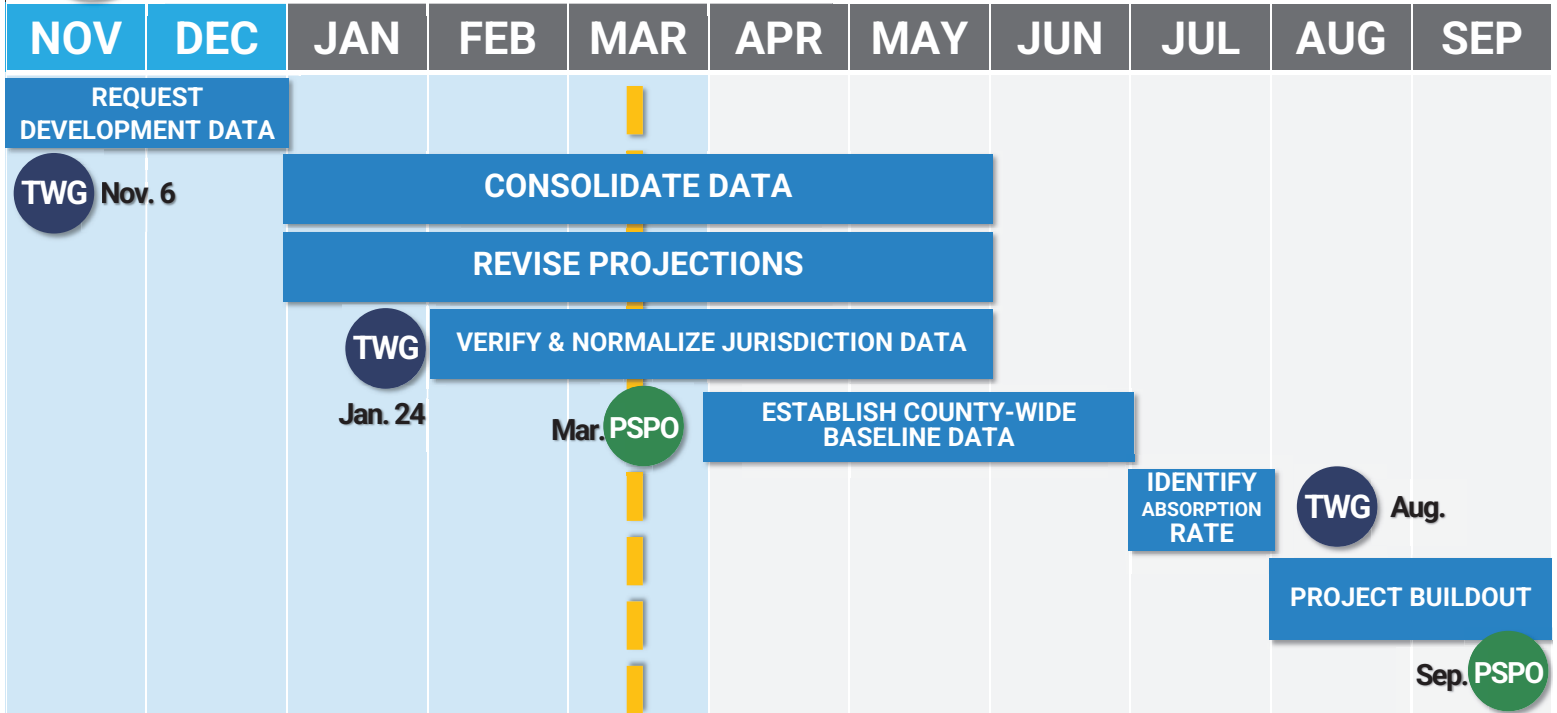
7. Project 5-, 10-, 20-Yr. Buildout  
(Aug. - Sept.)



## Looking Forward (Data)

### WORK PLAN

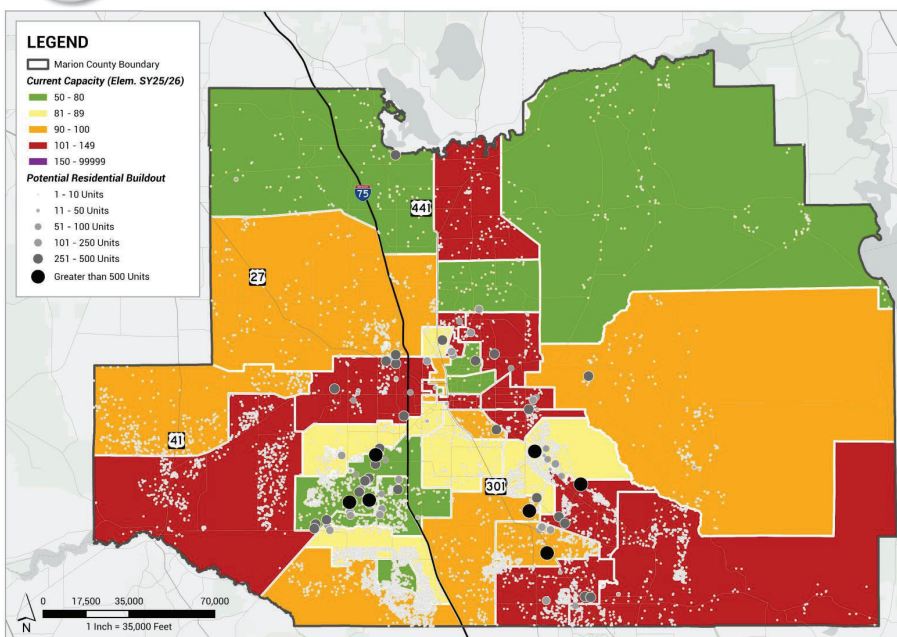
13



## Looking Forward (Data)

### SY 24-25 CAPACITY & ENROLLMENT

14



elementary

Enrollment

20,577

Capacity

90%

Current Elementary School Capacity (SY 25/26 Zones)







## Looking Forward (Data)

SY 24-25 CAPACITY & ENROLLMENT

15

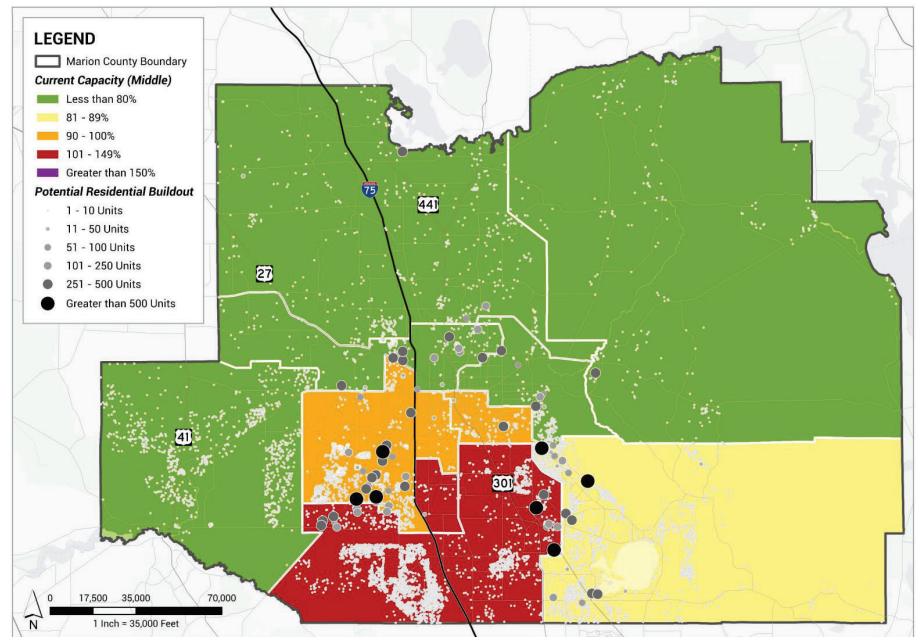
middle

Enrollment

10,452

Capacity

91%



Current Middle School Capacity



## Looking Forward (Data)

SY 24-25 CAPACITY & ENROLLMENT

16

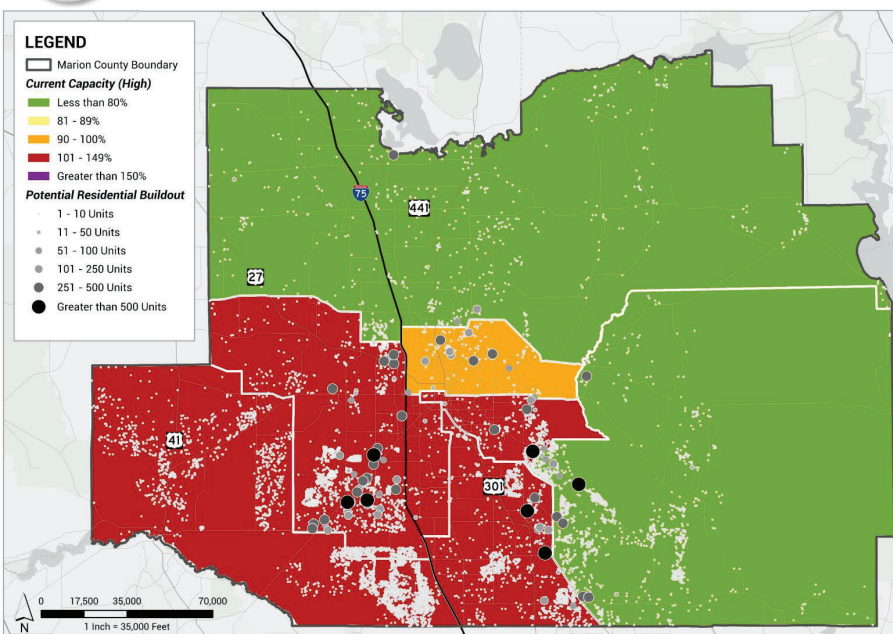
high

Enrollment

13,249

Capacity

101%



Current High School Capacity





# Looking Forward

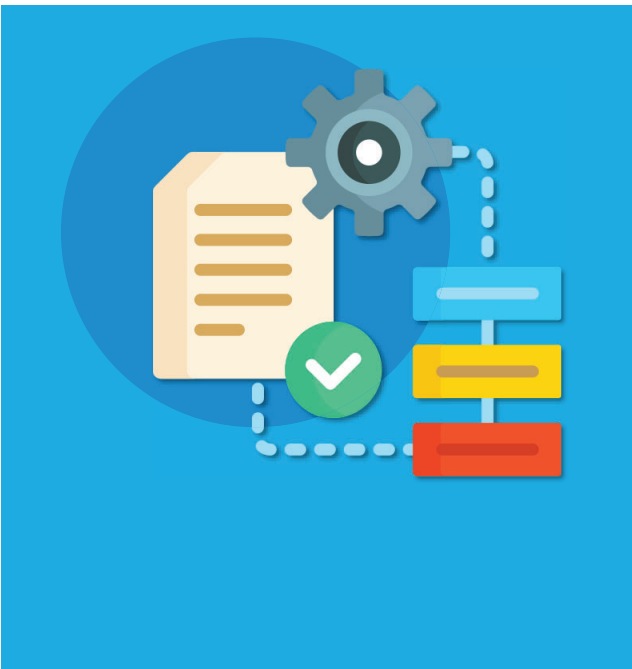
ILA



## Looking Forward (ILA)

## WORK PLAN

ILA



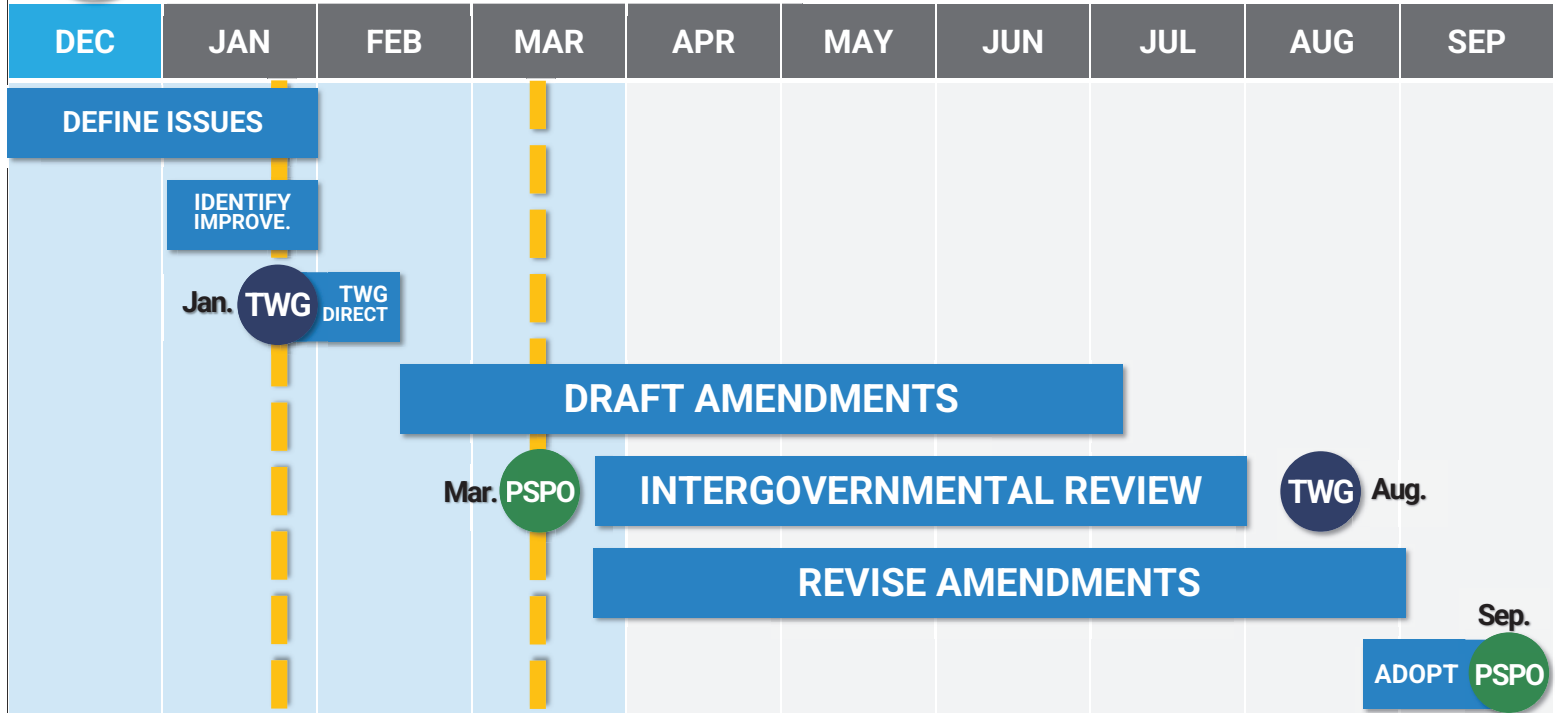
- Indicates step concludes with a TWG Meeting
- 1. Define Issues (Dec. - Jan.)
  - 2. Identify Improvements (Jan.)
  - 3. TWG Direction (Jan. - Feb.)
  - 4. Draft Amendments (Feb. - Jul.)
  - 5. Jurisdiction Review (Mar. - Jul.)
  - 6. Revise Amendments (Mar. - Aug.)
  - 7. Revise & Adopt Improved Agreement (Sep. PSP0)



## Looking Forward (ILA)

### WORK PLAN

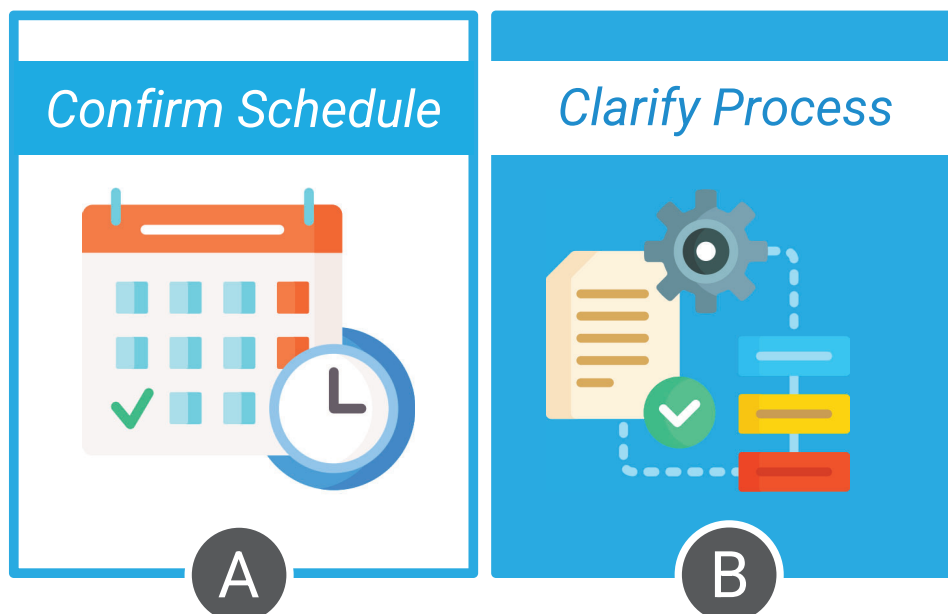
19



## Looking Forward (ILA)

### ITEMS TO ADDRESS

20

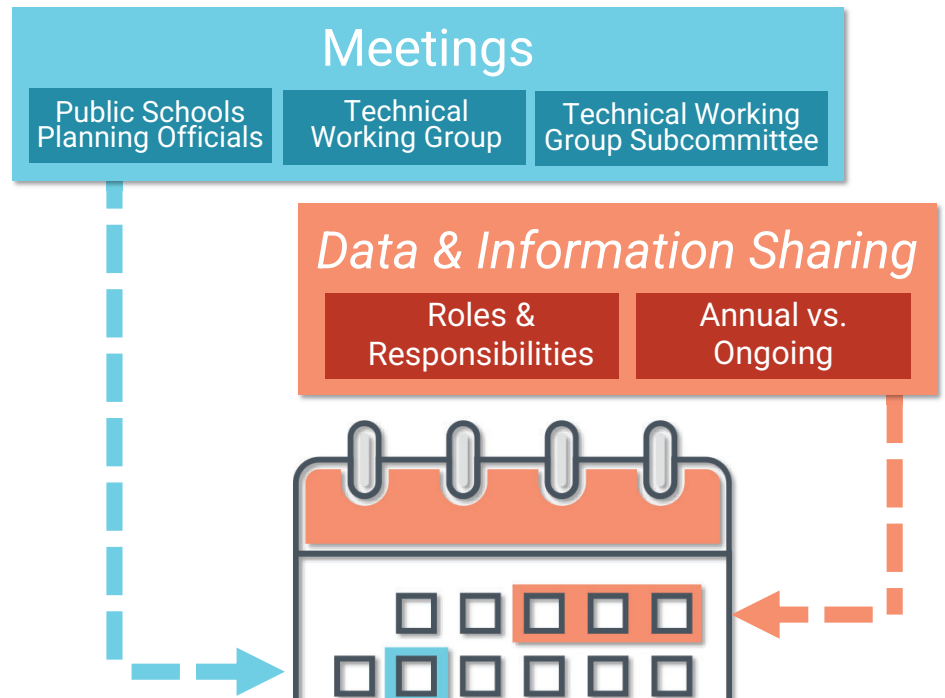
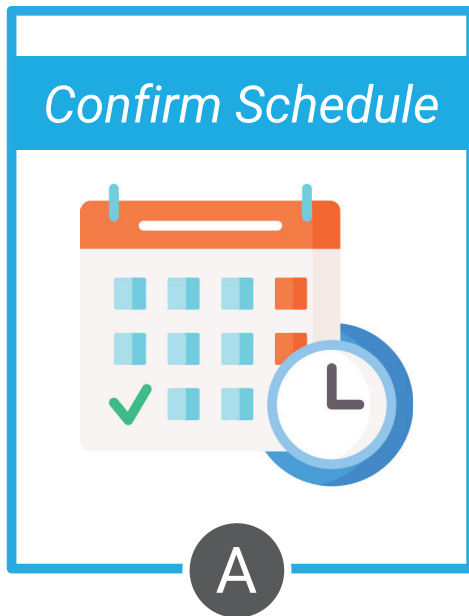




## Looking Forward (ILA)

### ITEMS TO ADDRESS

21



## Looking Forward (ILA)

### ITEMS TO ADDRESS

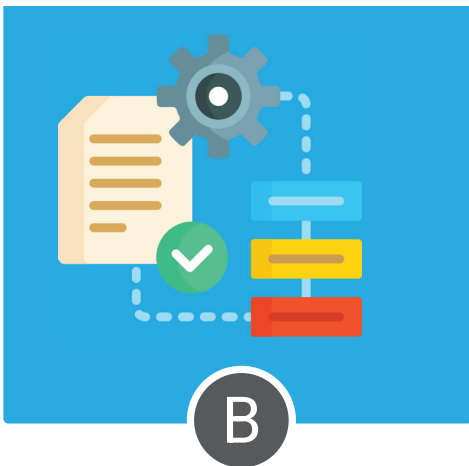
22



- I. Table of Contents
- II. Roles and Responsibilities
- III. Procedure
  - A. Joint Meetings
  - B. Information Sharing Coordination
    - a. Formatting of Data Shared
    - b. Uniformity of Data Tracked
  - C. Student Enrollment & Population Projections
  - D. School Location & Site Selection



#### Clarify Process



#### IV. Appendix

- A. Annual Schedule
- B. Student Generation Multiplier
- C. Sample Agendas
- D. Glossary

#### SECTION 03

# CONFIRMATION & DISCUSSION







## CONFIRMATION & DISCUSSION

25

The **TWG Subcommittee** is asking the **PSPO** for guidance on these topics:

- Schedules Based on “School Year”
- Work Plan for Data Assessment
- Work Plan for ILA Amendments
- Focus for ILA Amendments
- Consideration for Further TWG Review & Meetings (Aug.)
- PSPO “JPW” Date (Sept.)

26

# THANK YOU

## Tentative Education Facilities Plan

### PROJECT UPDATE

*March 2025 PSPO Meeting*

*The Technical  
Working Group*

*in partnership with*

