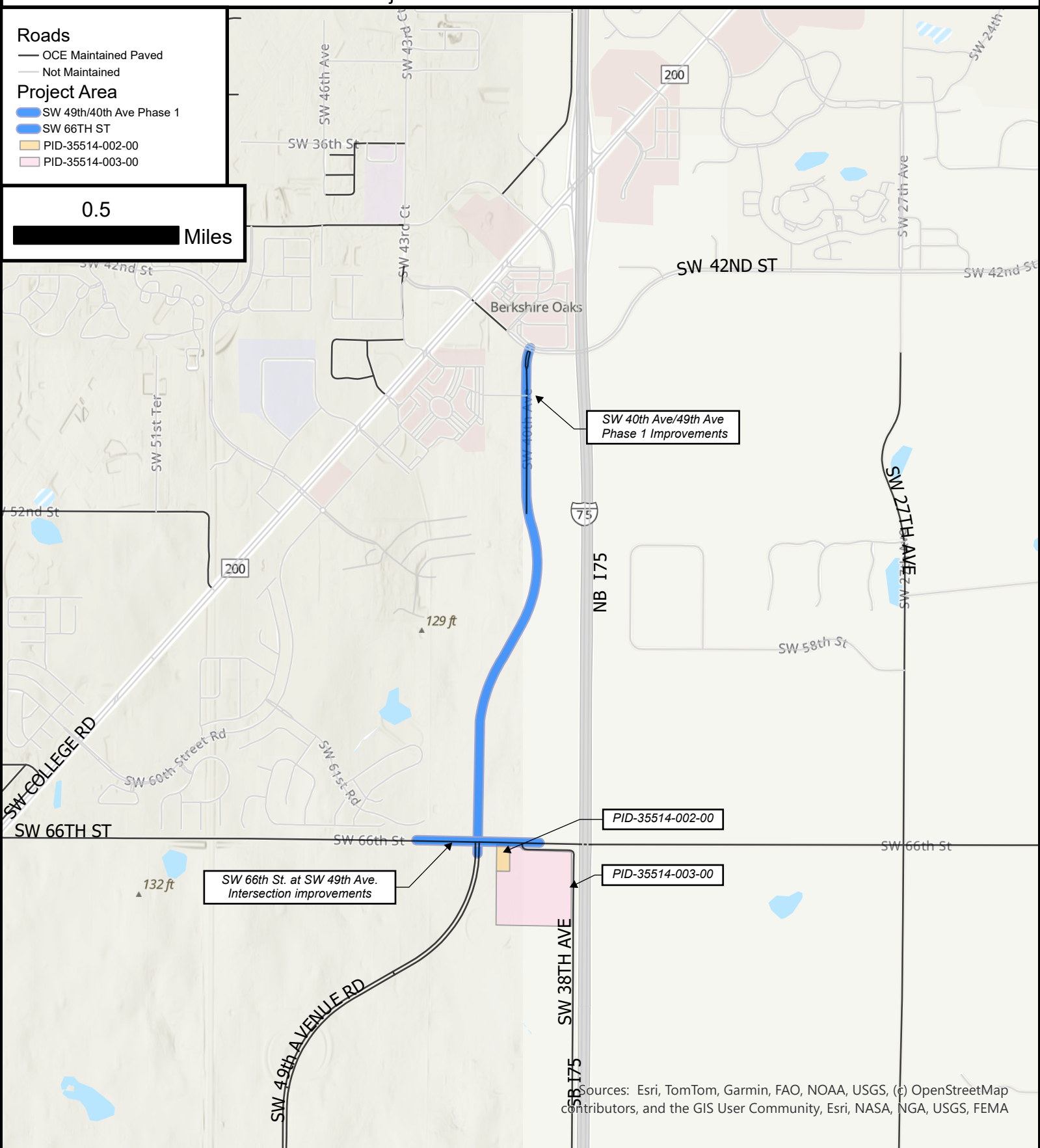




SW 40th Ave/SW 49th Phase 1
 (From SW 66th St to SW 43rd St Rd)
 PID 35514-002-00 & 35514-003-00
 Project # STC073804 & TIP073804

- Roads**
- OCE Maintained Paved
 - Not Maintained
- Project Area**
- SW 49th/40th Ave Phase 1
 - SW 66TH ST
 - PID-35514-002-00
 - PID-35514-003-00

0.5
 Miles



Sources: Esri, TomTom, Garmin, FAO, NOAA, USGS, (c) OpenStreetMap contributors, and the GIS User Community, Esri, NASA, NGA, USGS, FEMA

Pathway:
 \\mcbcc1\dfs\GIS_TR\Clay.Gibson\PDFs

Technician: CG
 Printed: 02/25/2026

Marion County Office of the County Engineer
 Asset Management Section
 412 S.E. 25th Avenue
 Ocala, FL 34471

